

# Instructions to fix double click error on computer mouse - Click once becomes twice

There are many different ways to fix the double click error, from simple to complex, depending on the error status of the mouse.

Computer mouse errors are not uncommon and can happen frequently. There are many types of mouse errors such as the mouse lights up but does not work, left mouse click error, or the mouse automatically double clicks. And whether the error is minor or serious, it still affects the user, especially when you play games on the computer because using a Touchpad does not ensure flexibility when playing games.

With the double click error, although you can still continue using it, over time you will encounter many troubles such as when dragging and dropping files or clicking files to open, etc. To fix the double click error, there are many different ways, Depending on the severity of the mouse error, there is a suitable treatment method. The article below will guide you through some effective ways to avoid double clicking.

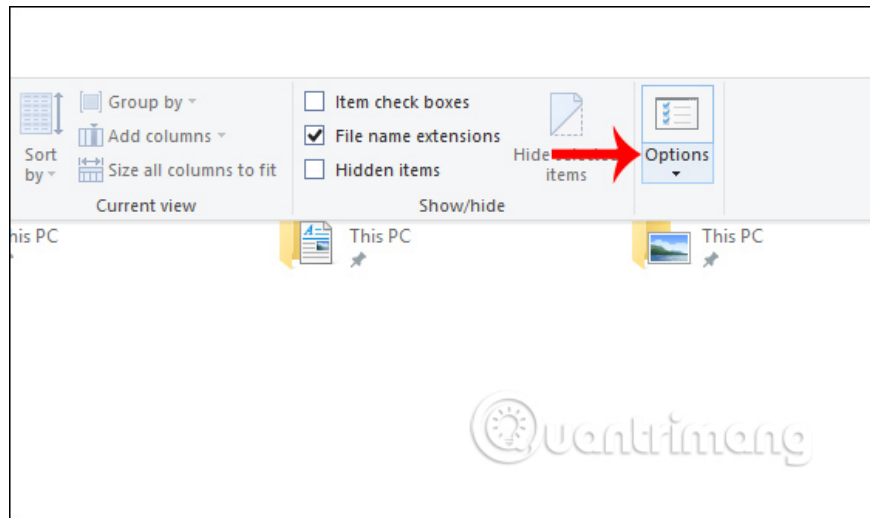
## 1. Fix slight double click mouse error

The slight double click error does not happen often and when pressed, the click of the mouse can be heard. There are 3 ways to fix this mild case.

### Method 1: Check mouse settings

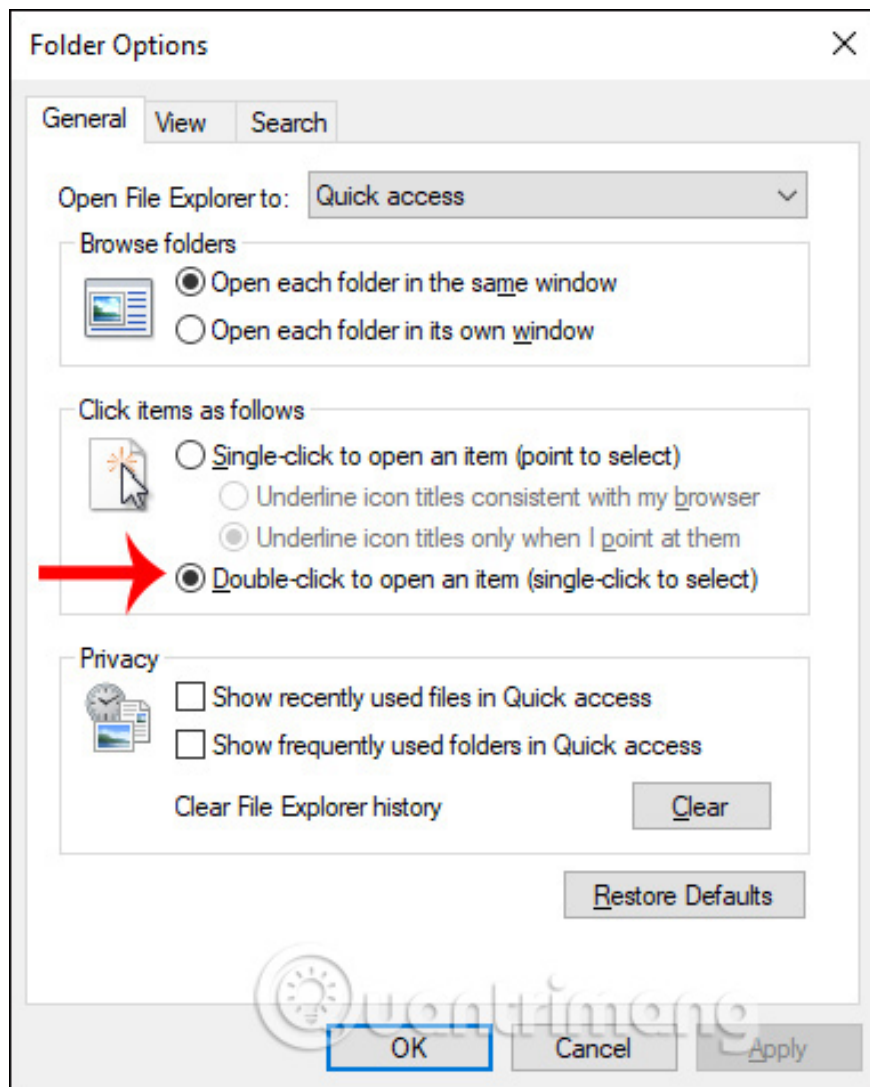
#### Step 1:

To fix, users first check to see if Single-click is enabled (click once to open the file). If you accidentally turn it on, when you click the mouse, a double-click error will occur. In the **File Explorer** interface, select the **View** tab and click **Options** located at the bottom of the panel.



## Step 2:

Displaying the new interface, look at the **Click items as following** section to check the mouse click settings. If the Single-click to open an item mouse click mode is open, the user switches back to **Double-click to open an item (single-click to select) mode** and then click OK to save.



## Method 2: Blow away mouse dust

With some mouse lines like Logitech and Genius, there is a way to blow mouse dust off the button. You should use a blower to blow away mouse dust more effectively.

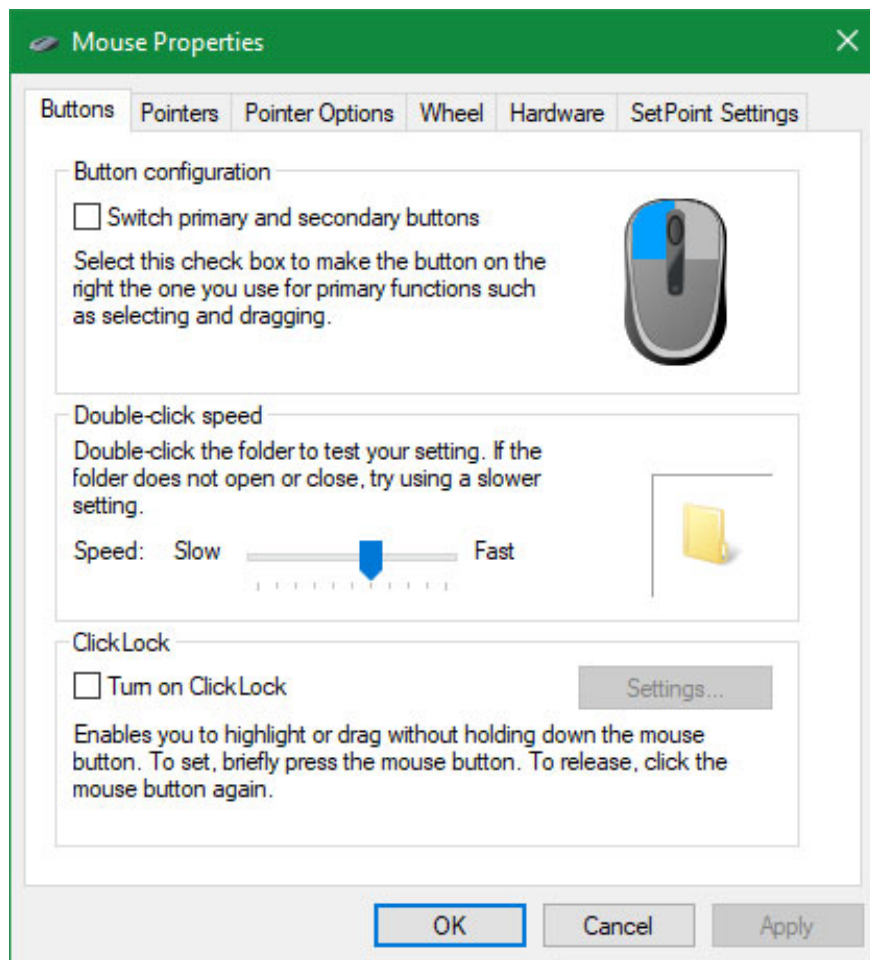


### **Method 3: Change double click speed**

Click speed is another Windows option you can change to fix double-click problems. For most people, the default double-click speed will be fine, but you may have changed it by mistake or set it to a level where Windows doesn't recognize your clicks.

To change double-click speed, go to **Settings > Devices > Mouse** and click **Additional mouse options** in the right sidebar. If you don't see this option, drag the **Settings** window to make it wider.

When you click that link, a new **Mouse Properties Control Panel** window will appear. On **the Buttons** tab , you will find the **Double-click speed** option .



Move the slider according to preference. You can double-click the folder icon on the right to check it out. The closer you set the slider to **Fast**, the less time Windows allows between clicks to interpret as double clicks. If it's too close to **Slow**, Windows may interpret two single clicks as double clicks.

#### **Method 4: Check battery life and make sure there are no obstructions**

Another cause of double-click mouse errors is poor communication between the mouse and the computer. This usually happens for one of two reasons: Low battery life or interference. These are two common problems with wireless mice, so you can skip this step if you use a wired mouse.

If your mouse uses batteries, try replacing them, as the mouse may not operate properly when the power is low. Similarly, you should plug a rechargeable mouse into a power source and give it some time to recharge.



If battery life isn't an issue, your mouse may have trouble communicating with your computer wirelessly. Try moving the mouse closer to your computer if it's far away. Additionally, if your mouse uses a USB receiver, make sure it is placed away from metal objects and other materials that could block the wireless signal.

### **Method 5: Try another mouse**

If you've tried all of the above and your mouse still keeps double-clicking, it may be defective. To test this, try plugging your current mouse into another computer or connect another mouse to your current computer.

If your mouse continues to function incorrectly on another computer, it is most likely defective. If you try a different mouse on your PC and don't have any problems, that's another sign that your original mouse is faulty.

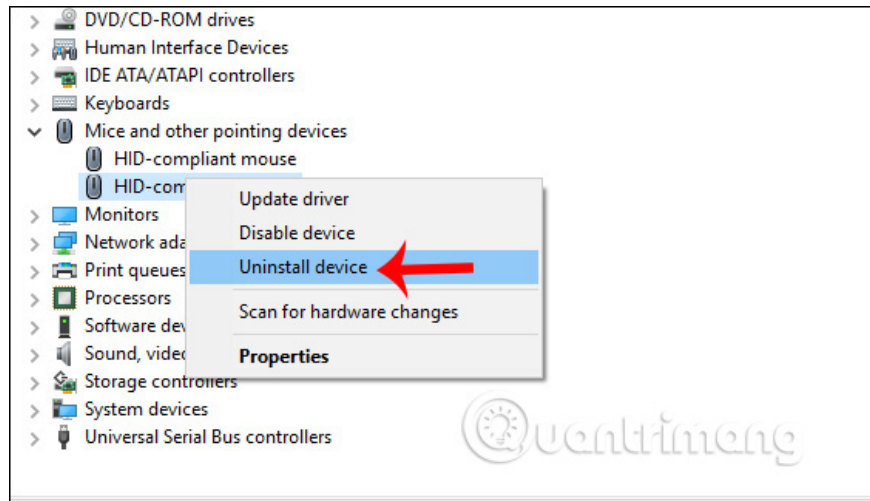
However, if the original mouse works fine on the second computer, or the second mouse has the same problem on the original computer, it's possible that software or something else is interfering with the normal operation of the mouse. Let's move on to the next step.

### **Method 6: Reinstall the mouse driver**

For other mouse errors or double-click mouse errors, you can try reinstalling the mouse driver to see what happens. We **open Device Manager** on the computer and then click on the **Mice and other pointing devices** section .

Next, **right-click on the mouse icon** and select **Uninstall device** , then restart the computer.

Once we have disabled the mouse, we need to use the keyboard to turn off the computer. Refer to the article [How to turn off the computer quickly using the keyboard on Windows](#).



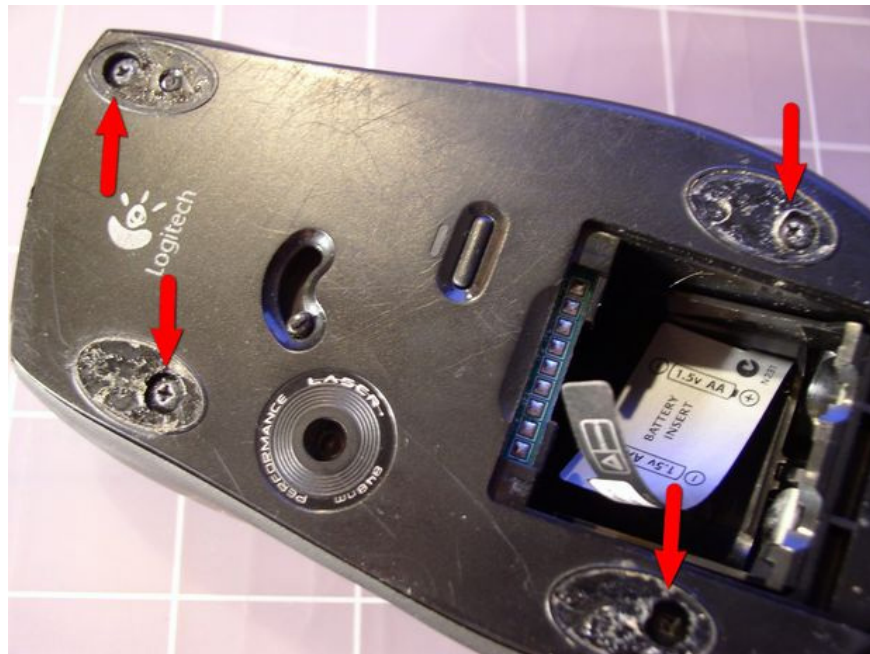
## 2. Fix severe double click mouse error

For severely damaged mice, just lightly touching the mouse will click twice. Before starting to repair according to this guide, you need to note the following issues:

1. There are enough tools including a small 4-sided screwdriver, tweezers, and a spare mouse
2. Large space with few small items so it's easy to find parts if you accidentally drop them
3. Removing it is very easy but installing it is very difficult so you should consider before doing it

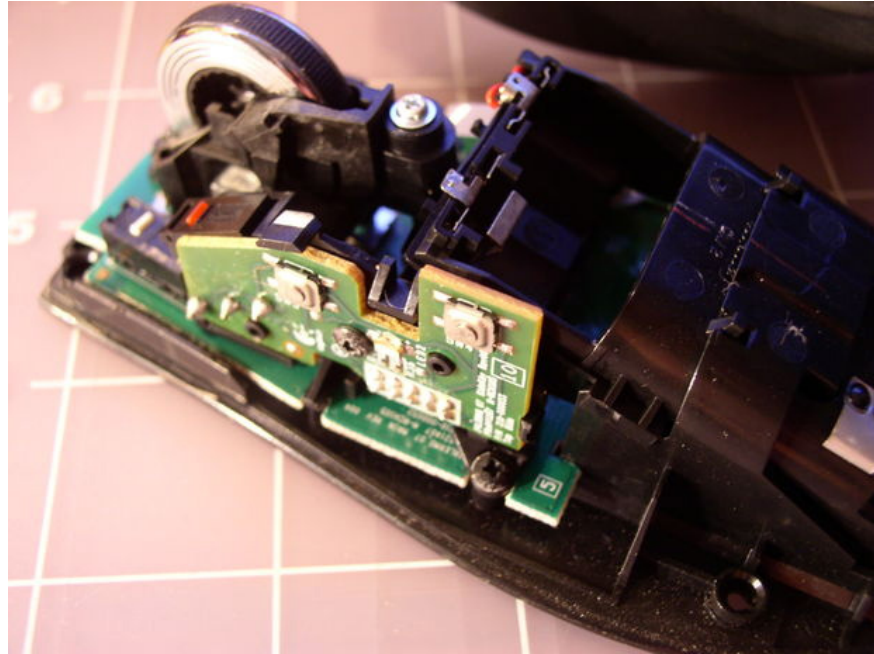
### Step 1:

First, users need to remove the mouse battery if using a wireless mouse. Then remove the mouse's screws.



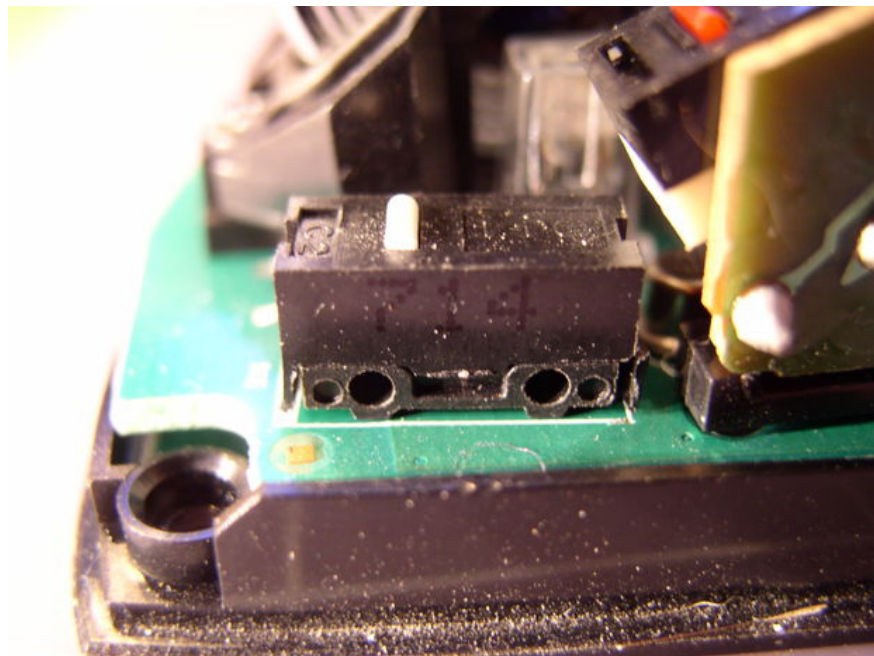
### Step 2:

Next, remove the bottom cover of the mouse from the mouse body.



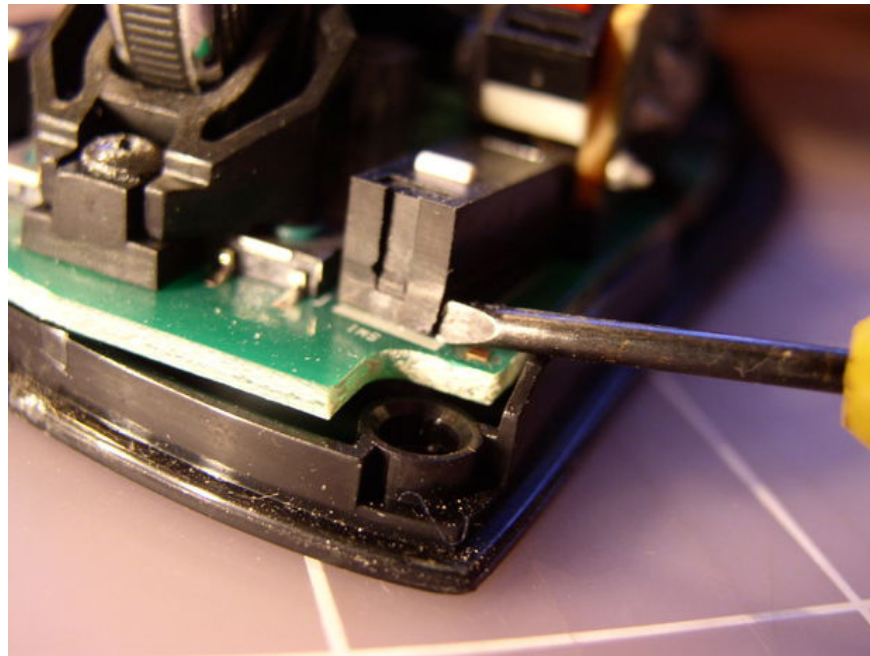
### Step 3:

Determine which side has the mouse error, usually the right mouse error. On the mouse click button you see a **white plastic bar** , very important. After processing, this white button must be fixed.

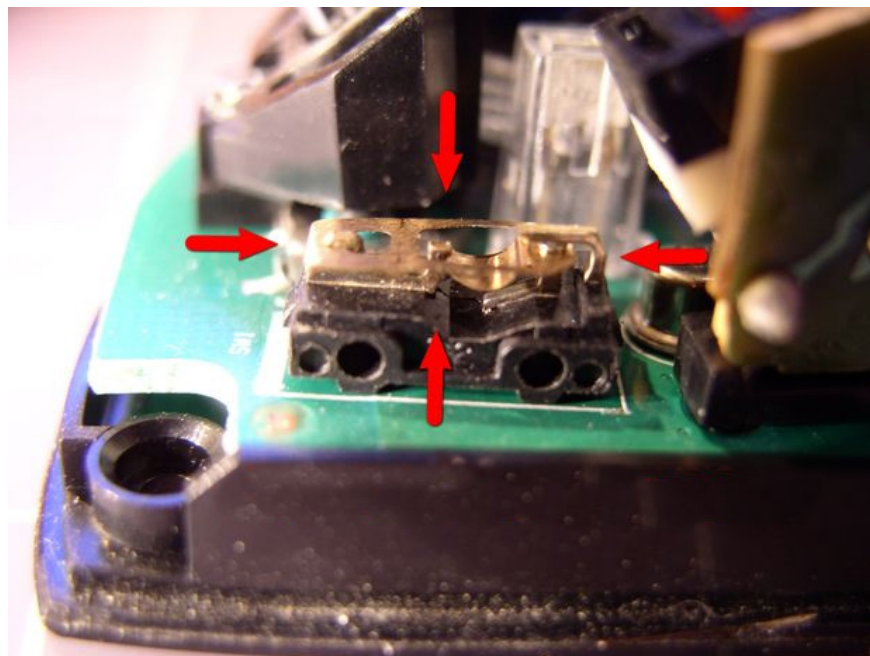


### Step 4:

This black box has a lid on top, fixed to the bottom with plastic clips at both ends. Use a flat-head screwdriver to pry off the cover gently and slowly to avoid breaking it.

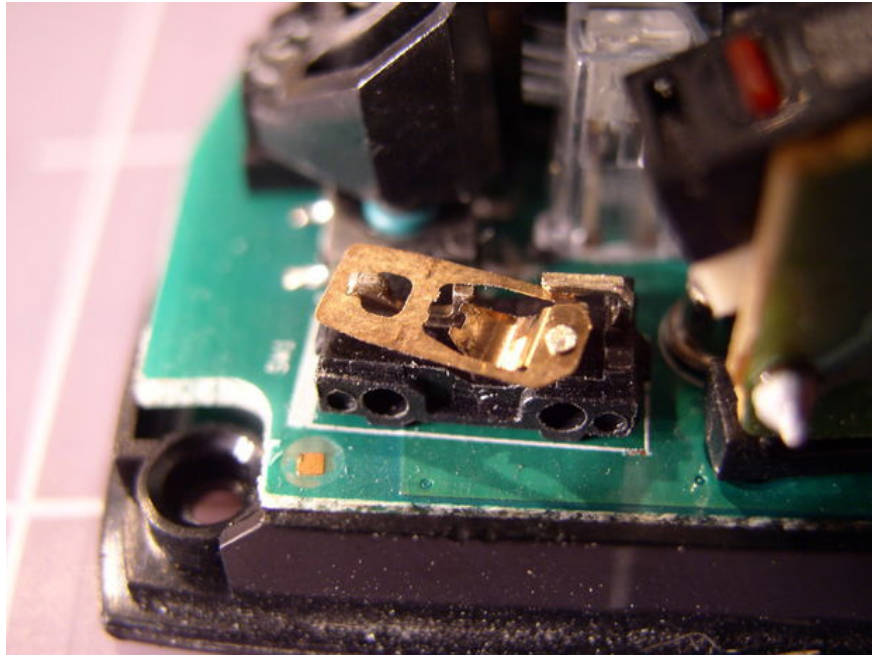


The inside of this black box is where you need to handle the double click error.

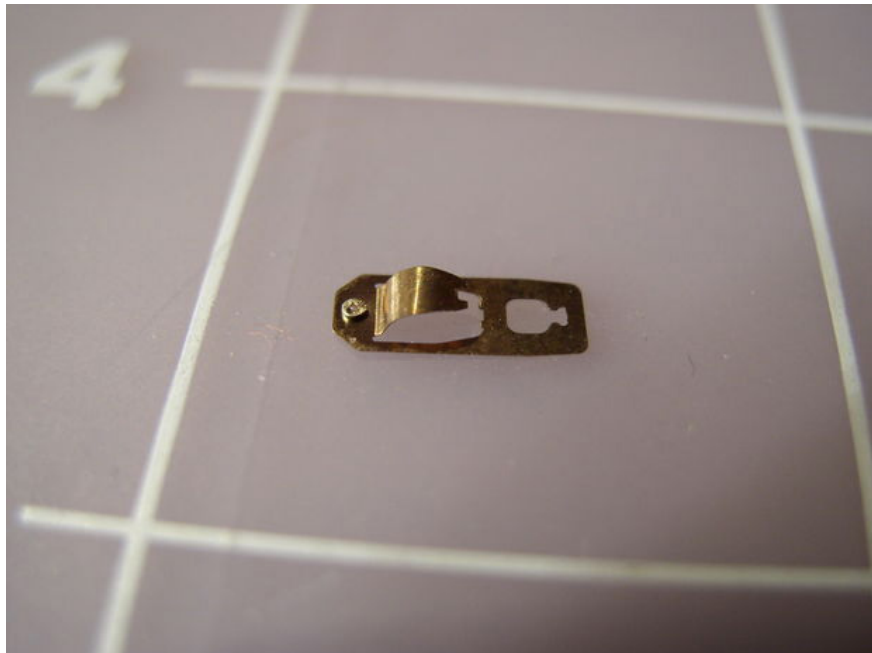


**Step 5:**

The top surface has a metal piece that is responsible for clicking the mouse when in use.



This metal piece has a **small arc-shaped piece of metal** so that when you click the mouse, the operation will be performed immediately.

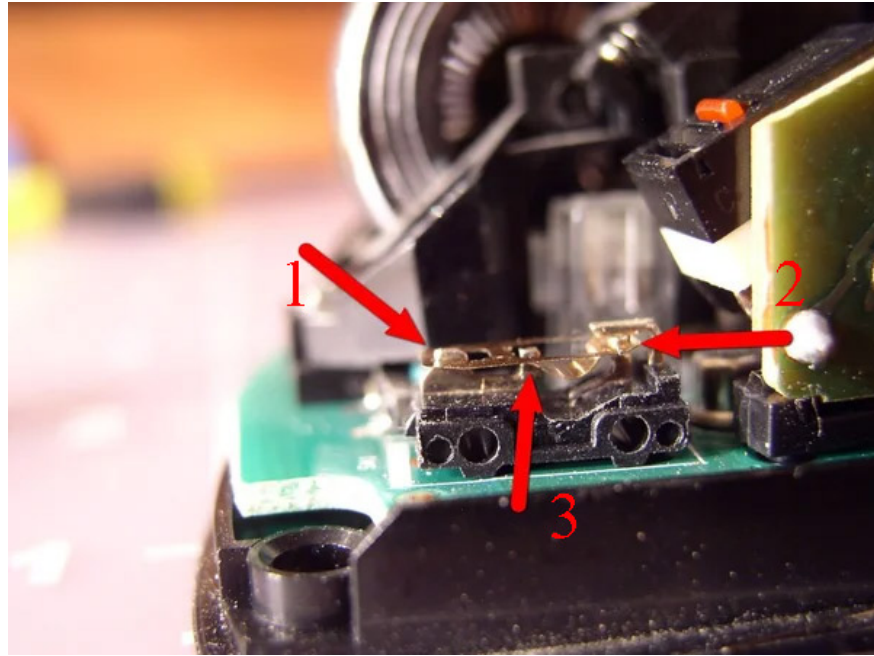


If the mouse has a double click error, this copper bar will have a large curvature. They need **adjustment to reduce** its curvature. You can compare the small piece of metal that was bent before and the time after it has been adjusted to the appropriate curvature.



**Step 6:**

Once we have finished editing this metal bar, we need to install it. This step requires your patience and precision. First, you need to **attach the curved bar to the small hook in the black box** (first arrow). Next, use a flat-head screwdriver **to push the curved bar into the lower position** (second arrow). You need to pay attention to the position of the 3 right arrows as shown in the picture before the mouse can work again.

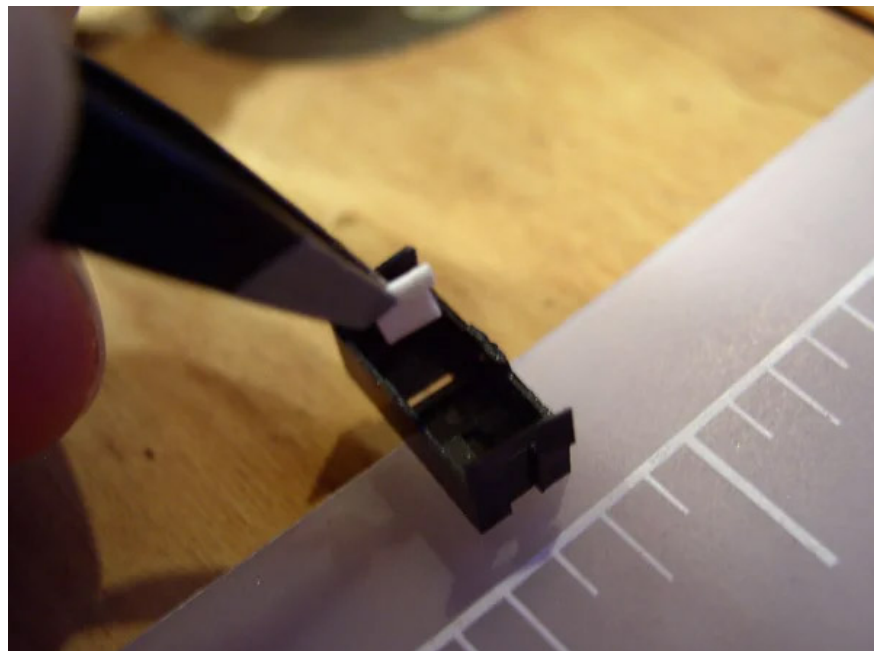


This is the most difficult part and you may have to do it over and over again to get the copper bar into its correct position. The levers and mounts are very small in design so you have to be really skillful and patient when doing it. The small and narrow working space also causes many obstacles.

During this step, components can easily pop out and fall around. Therefore, you should work in a large space with few sundries to avoid losing necessary components. You can watch the video below to better understand the operation when reinstalling the copper bar in its place:

### **Step 7:**

Next, proceed to the black box lid. Use tweezers to attach the white push button to the original position.



Use one hand to turn the mouse body upside down and then replace the black box lid. Try pressing the white button and if it makes a crisp clicking sound, it's definitely effective. If the sound is strange, the user is forced to open and bend the metal bar again.

Finally, install the screws into the mouse as before.



So you have a method to fix errors when the mouse double clicks. First of all, users should fix it with the first methods such as blowing dust, changing mouse settings and then the complicated step of disassembling the mouse.

I myself also encountered many difficulties when fixing my Razer Deathadder mouse that was double-clicked. Everything went smoothly until the step of reinstalling the copper rod in its place. I had to do it over and over again to get the copper bar in the right position. Now my mouse is good again, guys! Wish you guys success.

If you have removed the mouse and tried to fix it once but it doesn't work or you don't have the skills to repair the mouse, you should buy a new mouse to use.

You finished reading the article "**Instructions to fix double click error on computer mouse - Click once becomes twice**" edited by the [TipsMake](#) team. We hope this article has provided you with many useful tech tips and tricks. You can search for similar articles on tips and guides. Thank you for reading and for following us regularly.