

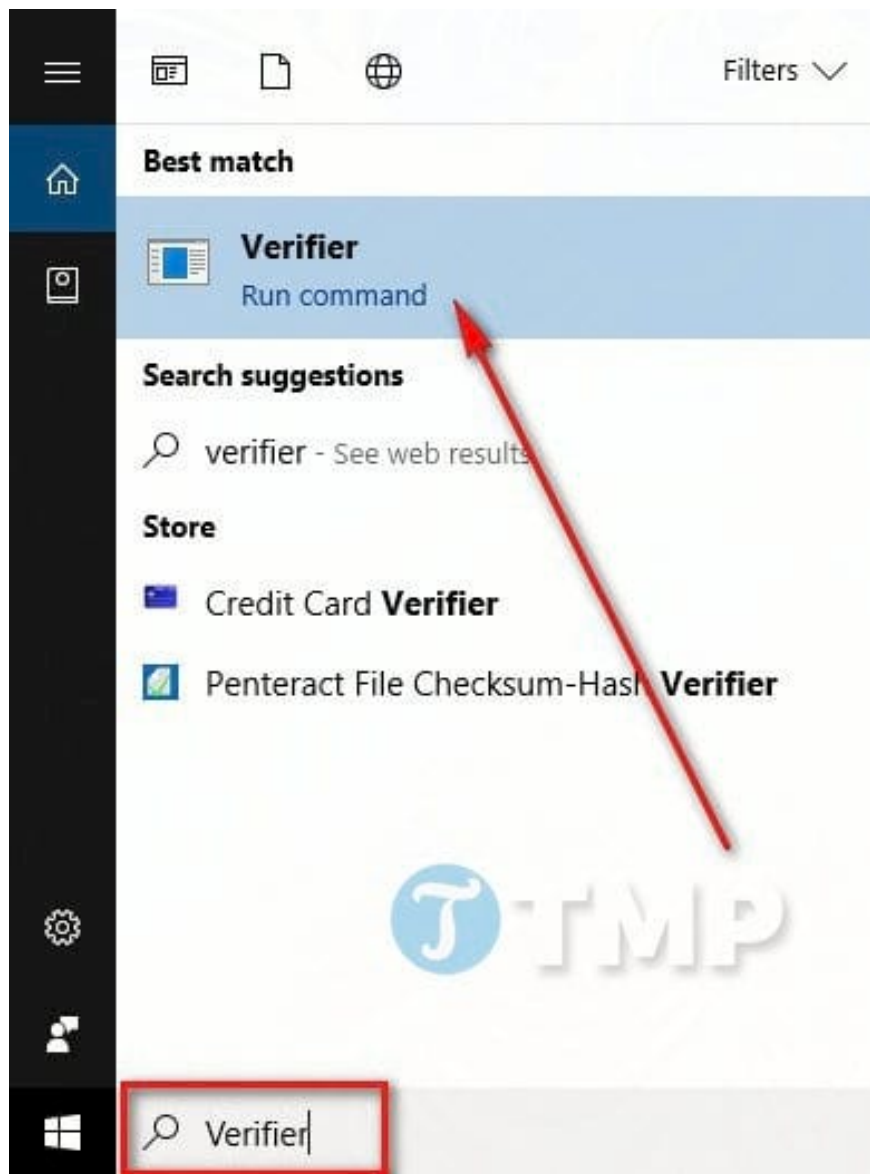
Instructions to enable/disable Driver Verifier to avoid system errors

Driver Verifier on Windows 10 helps check for driver errors but can cause blue screen (BSOD). You need to know how to enable/disable it properly to avoid system errors. TipsMake will guide you in detail.

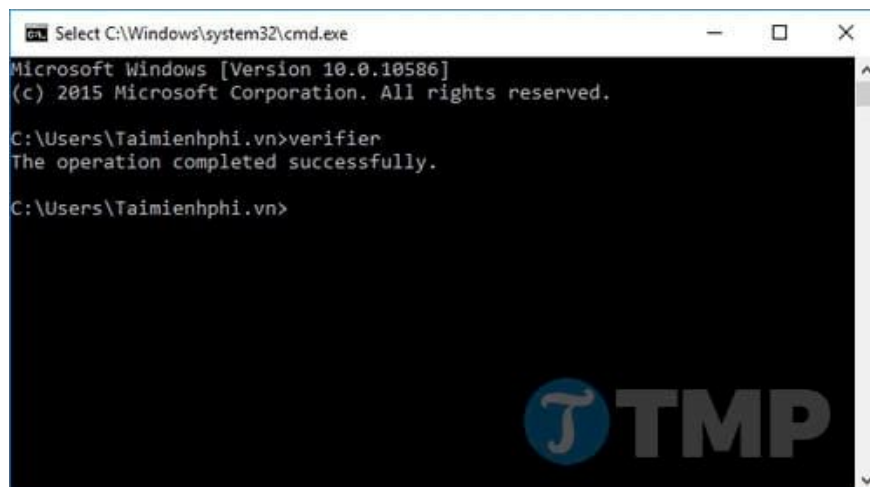
Need to check for faulty drivers on Windows 10 but are worried about running into problems? This guide helps you safely enable/disable Driver Verifier to avoid unwanted system errors.

How to run Driver Verifier

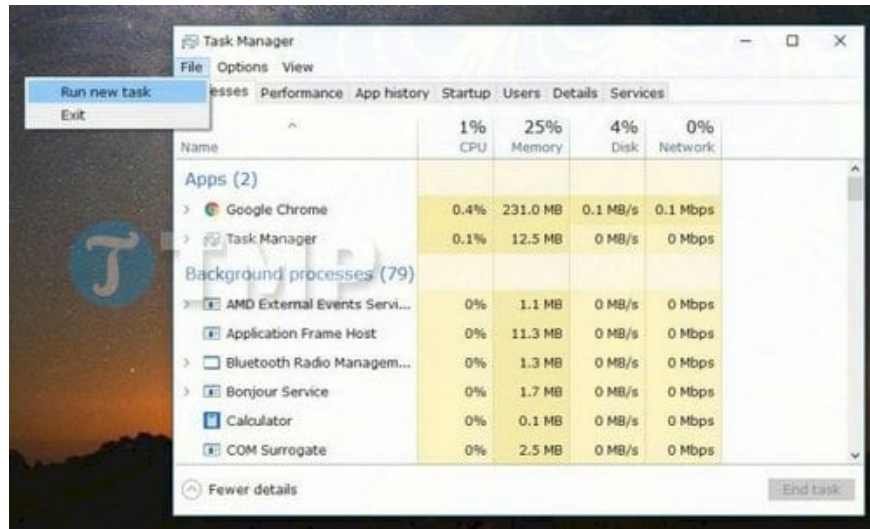
The most common way is to type **Verifier** into the Search box on the Taskbar, then click **Verifier Run command** .



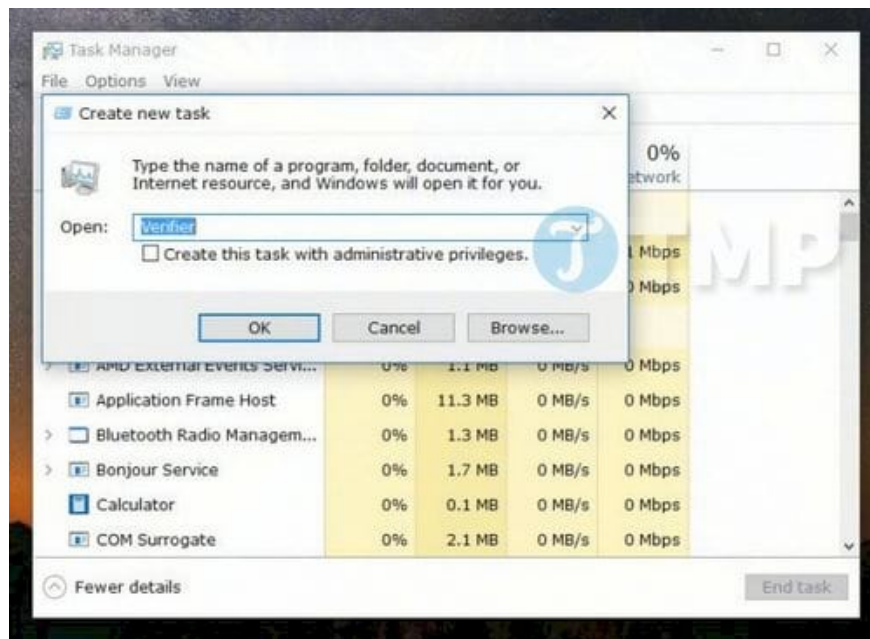
Alternatively you can also open CMD, and type **Verifier** in there and press Enter.



Finally, you can **open the Win 10 Task Manager** , then create a new task and select to open Verifier. To do this, click **File** , then select **Run new task** .



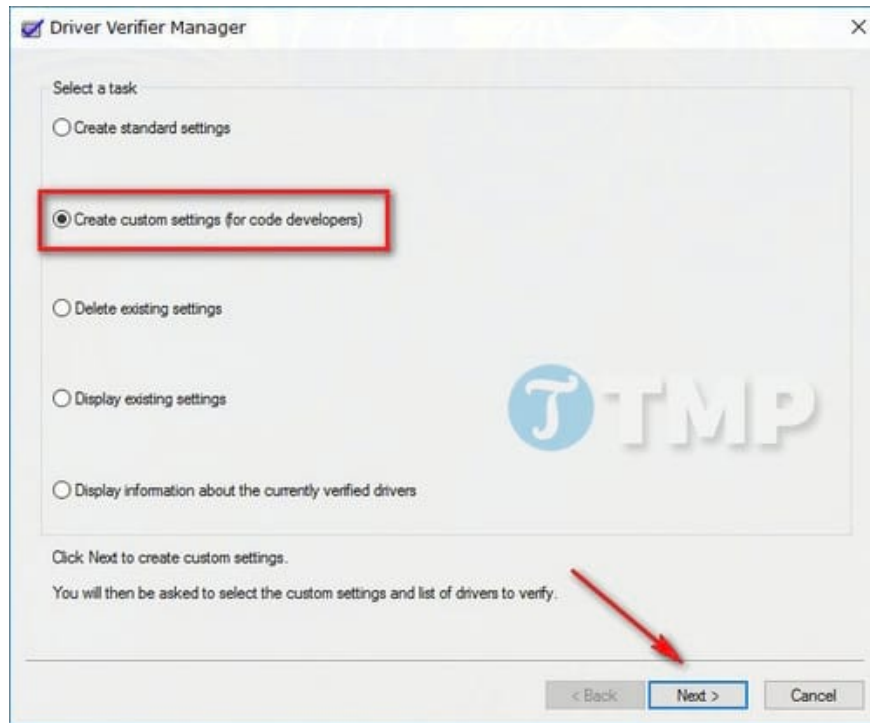
On the Create new task window, in the **Open** box, enter **Verifier** and click OK.



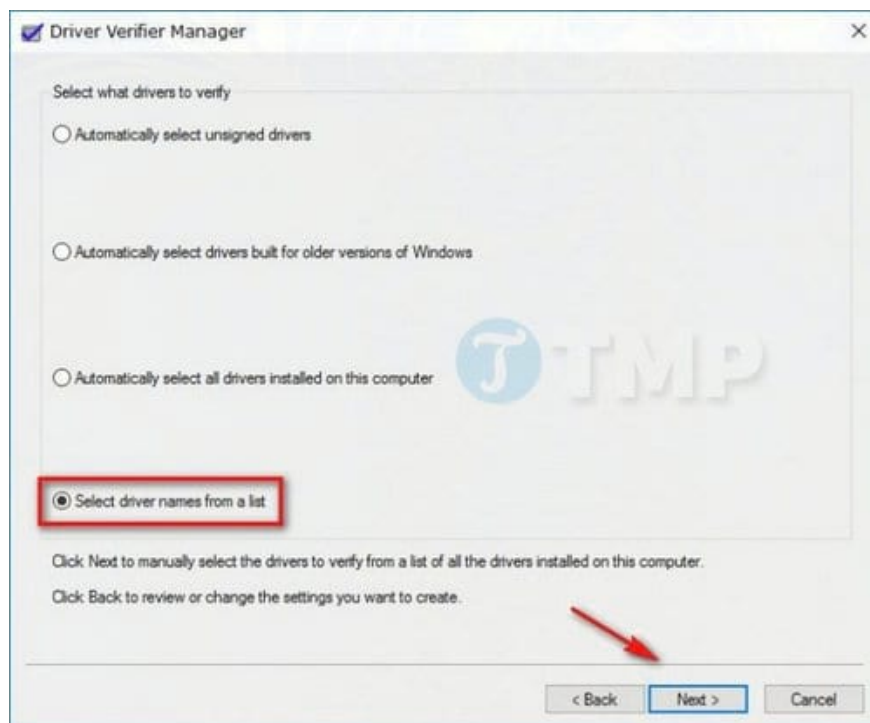
The Verifier will now run.

Configure Driver Verifier settings

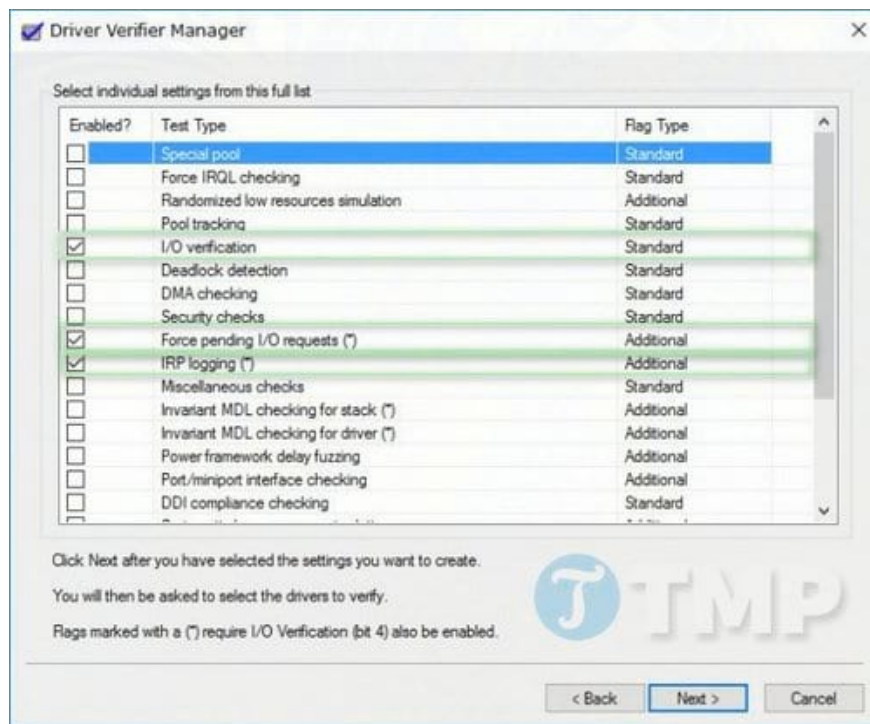
Once Verifier is open, the next step is to configure and enable the settings for Verifier to work properly. First, select the **Create custom settings (for code developers)** option , then click the **Next** button at the bottom.



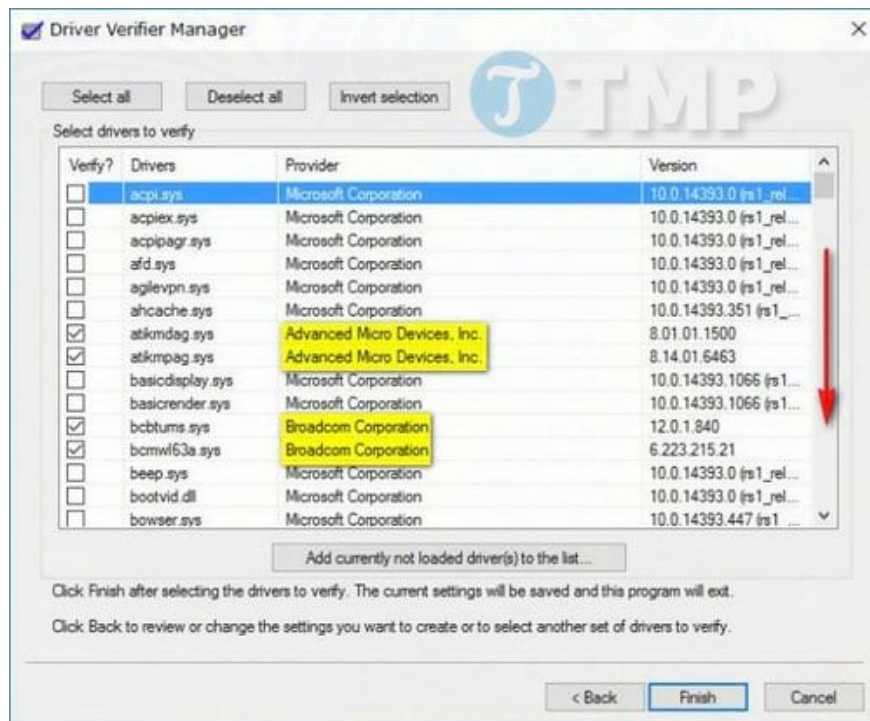
Check **Select driver names from a list** , then select the **Next** button again.



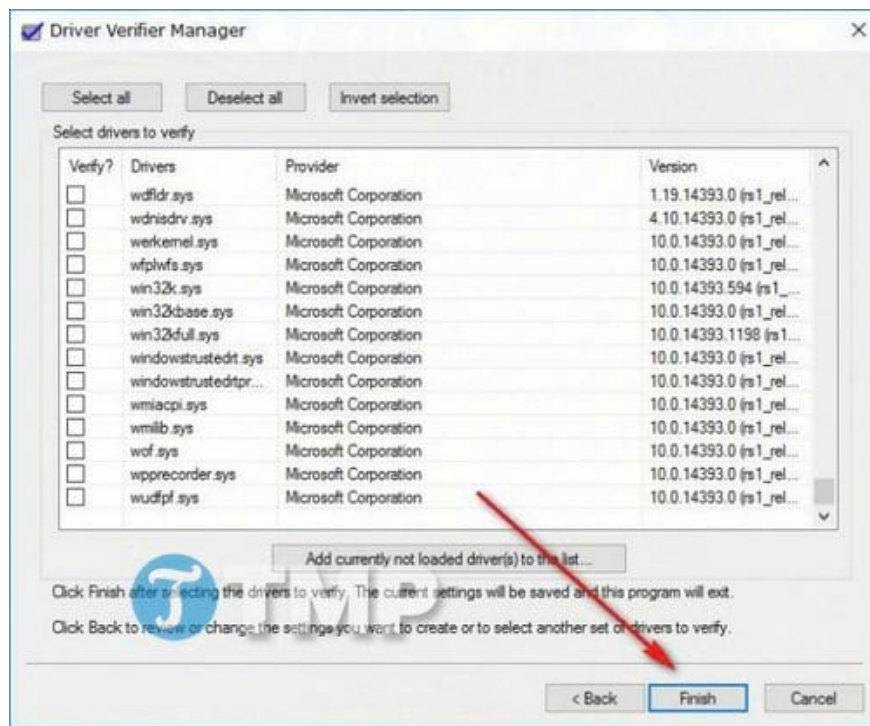
Next, check the options **I/O verification** , **Force pending I/O requests** and **IRP Logging** and click **Next** .



All you need to do now is check the list and check all the non-Microsoft drivers. To see if the drivers are from Microsoft or not, look in the Provider column.

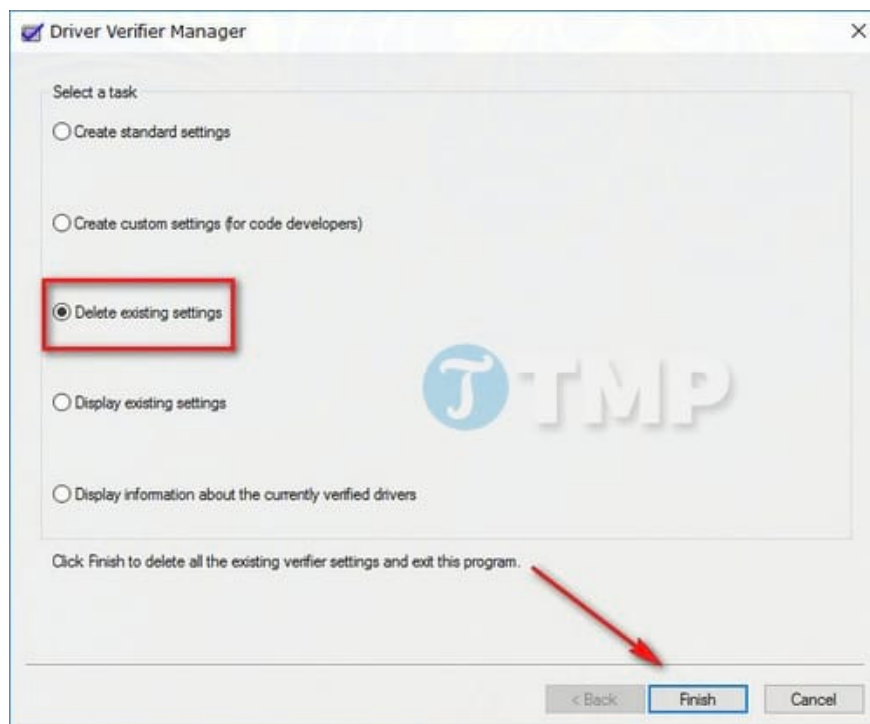


Click the **Finish** button at the bottom of the list.



How to disable (turn off) Driver Verifier?

If you want to disable it completely, just run Verifier again like in the steps above (via the Search box, Command Prompt or Task Manager), then select **Delete existing settings** from the menu. Then click the **Finish** button to turn off (disable) Driver Verifier.



Driver Verifier helps check for faulty drivers on Windows, but can cause blue screen errors (BSOD) if not used properly. If you encounter problems, you can disable Driver Verifier using Command Prompt or enter Safe

Mode to fix driver errors.

You finished reading the article "**Instructions to enable/disable Driver Verifier to avoid system errors**" edited by the [TipsMake](#) team. We hope this article has provided you with many useful tech tips and tricks. You can search for similar articles on tips and guides. Thank you for reading and for following us regularly.
