

Instructions to create WinPE file IOS, USB boot WinPE

Windows Preinstallation Environment (WinPE) boot device depends on each toolbox of the geeks.

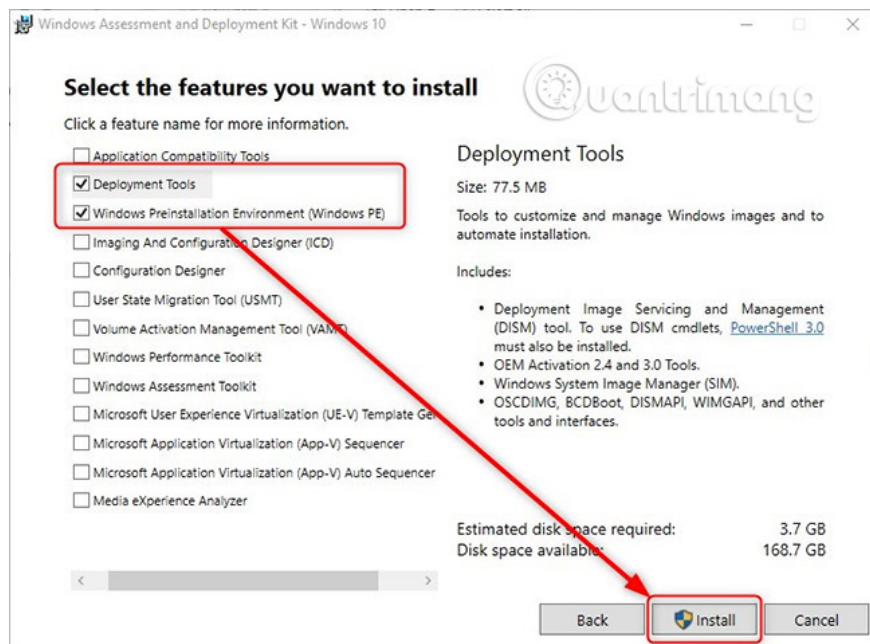
Windows Preinstallation Environment (WinPE) boot device depends on each toolbox of the geeks. According to a quote from Wikipedia, 'WinPE was originally intended to be used only as a pre-installed platform, to deploy Microsoft Windows operating systems, especially to replace DOS in this respect. WinPE has the following uses:

1. Deployment of workstations and servers in large corporations, as well as preinstalled by builders of workstation and server systems for sale to users.
2. Platform recovery to run 32-bit or 64-bit recovery tools, such as Winternals ERD Commander or Windows Recovery Environment (Windows RE).
3. Play the role of running third-party or 64-bit disk mirroring utilities. "

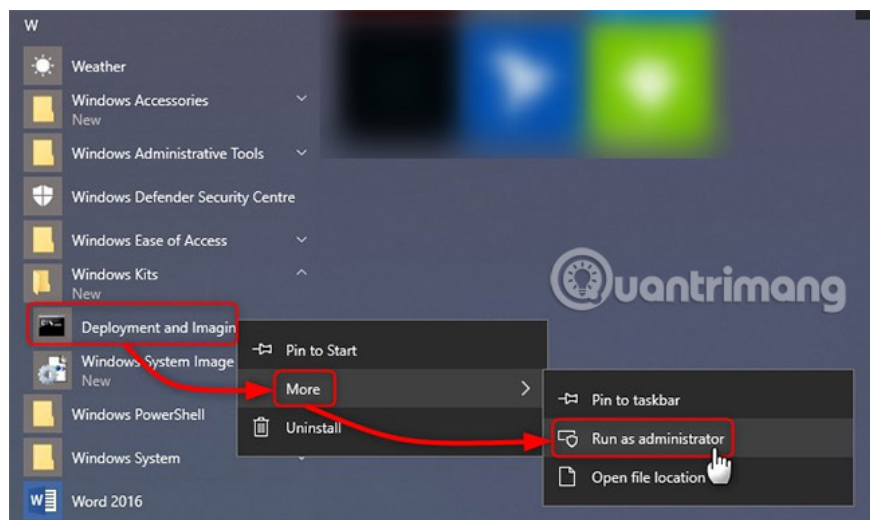
Create a WinPE file IOS, USB boot WinPE

Create a WinPE file IOS, USB boot WinPE very fast and easy. This article will guide you in detail how to create a WinPE file IOS, USB boot WinPE.

- 1) Download the latest Windows 10 ADK (Assessment and Deployment Kit) or Windows Insider Preview ADK.
- 2) You can fully install 7 GB ADK version, but in this article, you only need components **Deployment Tools** and **Windows Preinstallation Environment** .



3) After installing, open the **Deployment and Imaging Tools** interface by right-clicking on **Start > W > Windows Kits** and selecting **More > Run as administrator** .



4) Reminder is quite long. Shorten it by going to the root of the **C:** drive with the **cd** command (# 1 in the next screenshot).

5) Create WinPE files with the following command (# 2):

```
amd64 copy D: WinPEx64
```

```
Administrator: Deployment and Imaging Tools Environment
C:\Program Files (x86)\Windows Kits\10\Assessment and Deployment Kit\Deployment Tools>cd\
C:\>copyype amd64 D:\WinPEx64
Creating Windows PE customization working directory
D:\WinPEx64
```

Replace the **D: WinPEx64** path with the drive letter and your preferred directory name. The above command creates PE files used to boot a 64-bit machine. If you create PE for a 32-bit machine, replace **amd64** with **x86** :

```
x86 copyype D: WinPEx86
```

6) Plug in the USB flash drive, note the drive letter. Enter the following command, replace the path **D: WinPEx64** with the actual path to the directory where you created the PE file and drive letter **I:** by the actual drive letter of the USB drive:

```
MakeWinPEMedia / UFD D: WinPEx64 I:
```

If you want to create a WinPE file ISO, change / **UFD** to / **ISO** , then add the path and file name where you want to create the ISO file:

```
MakeWinPEMedia / ISO D: WinPEx64 F: WPE64.iso
```

You will be warned that the USB flash drive will be reformatted. Accept with **Y**:

```
Administrator: Deployment and Imaging Tools Environment
C:\>MakeWinPEMedia /UFD D:\WinPEx64 I:
WARNING, ALL DATA ON DISK DRIVE I: WILL BE LOST!
Proceed with Format [Y,N]?Y
Formatting I:...
Setting the boot code on I:...
Copying files to I:...
Success
```

See more:

1. Deploy Windows 7 - Part 19: Create a custom WinPE Tools CD
2. Deploying Vista - Part 11: Working with Windows PE
3. Deploy Vista - Part 10: Introduction to Windows PE

You finished reading the article "**Instructions to create WinPE file IOS, USB boot WinPE**" edited by the [TipsMake](#) team. We hope this article has provided you with many useful tech tips and tricks. You can search for similar articles on tips and guides. Thank you for reading and for following us regularly.
