

# Instructions to connect the computer to other devices via bluetooth

Bluetooth is a wireless connection - with bluetooth, you can connect devices such as phones, mice, headsets, printers, keyboards ... to your computer. You can copy data, use wireless devices (mouse, keyboard ...) or even play music from your phone via computer speakers ...

Bluetooth is a wireless connection - with bluetooth, you can connect devices such as phones, mice, headsets, printers, keyboards . to your computer. You can copy data, use wireless devices (mouse, keyboard .) or even play music from your phone via computer speakers .



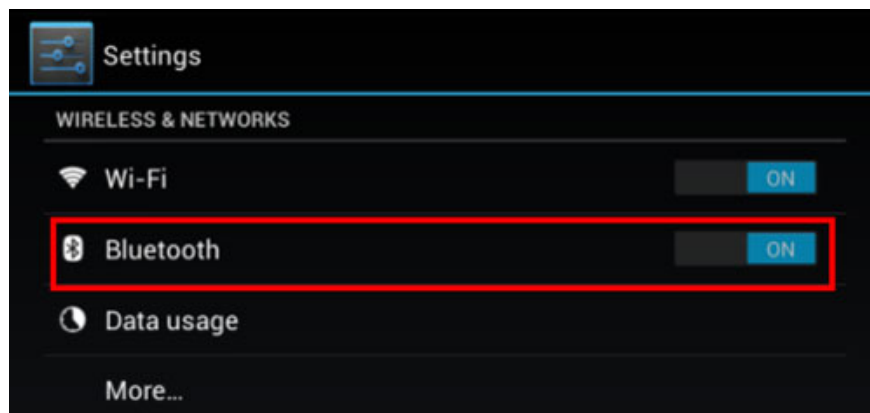
The use of Bluetooth is very simple, but sometimes still difficult for new users. To connect two bluetooth devices together, one (or both) devices must be bluetooth enabled and set in '*discoverable*' mode - *detectable* from other devices. The process of connecting bluetooth between two devices is also called '*pairing*'.

## Activate Bluetooth on computers and other devices

First, you must make sure that the bluetooth in the computer has been activated. Many computers often disable the bluetooth function to save battery power. In many new generation machines, wifi activation button usually combines bluetooth activation function, or can be activated via a good keystroke from the attached software. If your computer does not support bluetooth, you can buy a bluetooth transceiver at an affordable price, it can be easily connected via a computer USB port.



Next, activate bluetooth on the device you want to connect to the computer. Bluetooth is enabled by default on bluetooth mice or wireless headsets, but is disabled in smartphones or tablets for energy reasons. How to activate it depends on the device you have - for example, you can find the option to activate bluetooth on the Setting screen of Android devices.

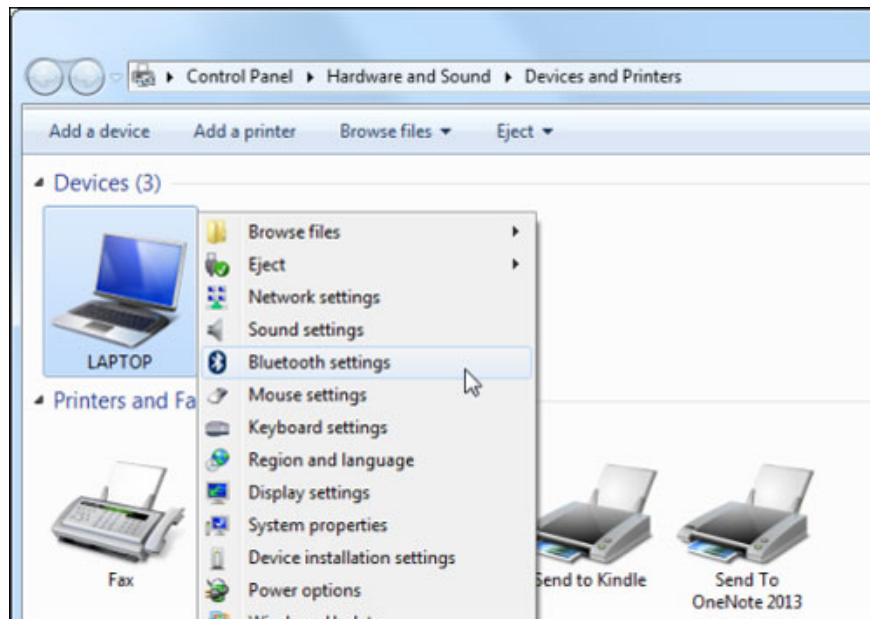


## Turn on Discoverable mode for your computer or device

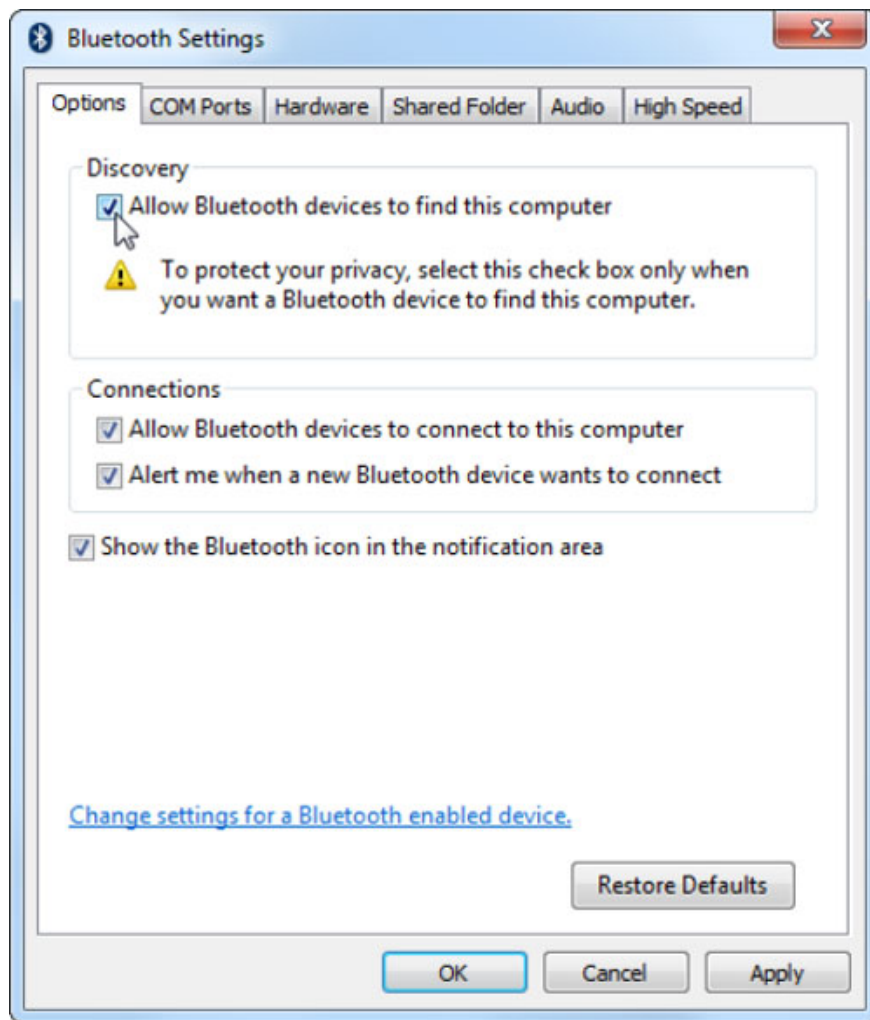
When the device's bluetooth is turned on, they still cannot connect to each other. In order for the devices to recognize each other, they must be set to '*discoverable*' mode - in this mode, the devices will signal to other devices that can be detected. Usually this mode is disabled for security purposes - it is only activated when it needs to connect to other devices.

You only need to leave Discoverable mode in either device - either the computer or the device to connect is enough.

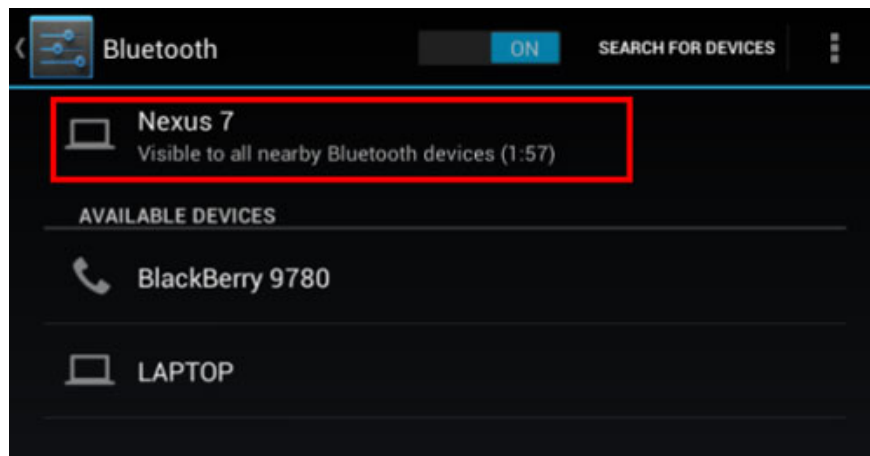
To turn on discoverable mode on a Windows 7-based computer, left-click **Start** , select **Devices and Printers** on the right side of the **Start** menu. Right-click on your computer on the list and select **Bluetooth settings** .



In the **Bluetooth Settings** window, check the **Allow Bluetooth devices to find this computer option** and press **OK** . Since then, other bluetooth devices have been able to detect your computer.



To turn on **discoverable** mode on the device, access the **Bluetooth** customization place and find **discoverable** options.



**Connect devices together**

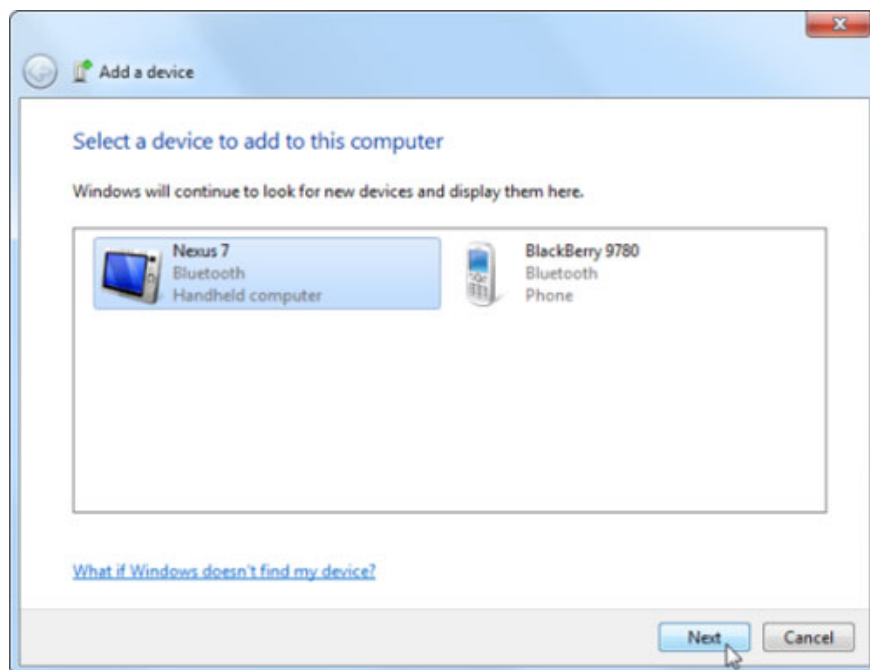
Now you can connect your device to the computer. If you've enabled Discoverable mode for your computer, you can choose to connect to the computer in the list of detected devices.

You can also enable discoverable mode on the device and connect to the computer. On the screen, in the **Devices and Printers** window, press the **Add a button** (if you want to connect to a bluetooth printer, press **Add a printer** ).



Window will search for devices that are able to connect and display in the list. Select the device you want to connect and click **Next** .

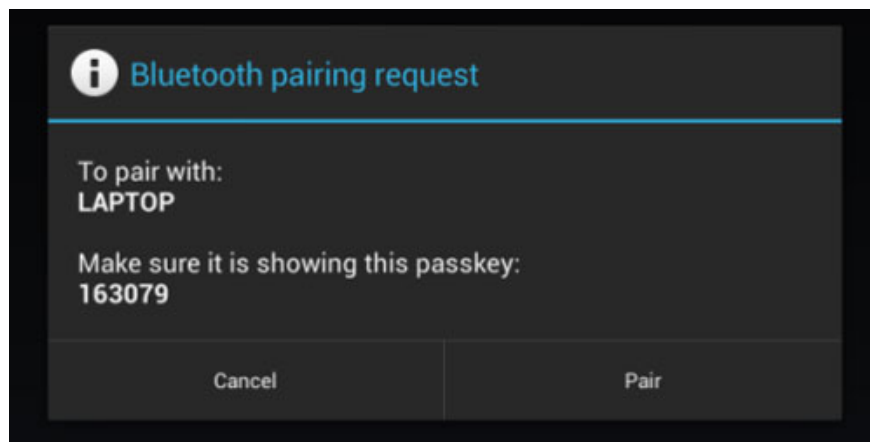
If you can't find the device name you want to connect to, check whether your device has **Discoverable** turned on.



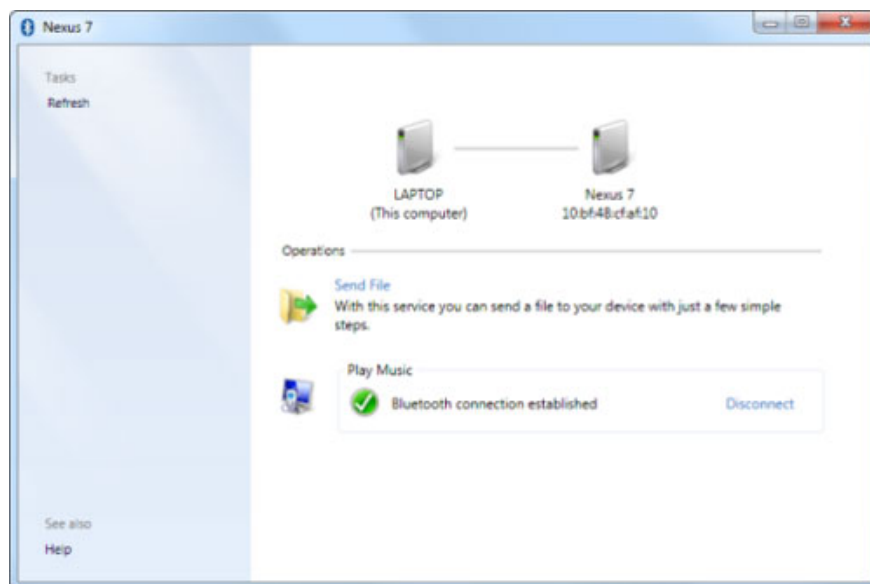
With some devices, you will see a code appear - make sure the code appears on the device and the number on the computer screen is one. This function will help you connect to the right computer you want.

You must accept the connection request on the device. If you start connecting from your device, choose to accept the connection from the computer. This helps prevent unwanted connections from other devices to your

computer when it is in Discoverable mode.



You can double-click the device name in the **Devices and Printers** window to access many other functions, such as sending and receiving files, playing the device's music on a computer speaker. The functions here will depend on your device.



And once your computer and device are connected, they will continue to work together - you won't have to repeat the process every time you use the device.

If you don't need to connect, turn off discoverable mode. You can also turn off the bluetooth function when not in use - this will save you the energy of both your computer and the device.

You finished reading the article "**Instructions to connect the computer to other devices via bluetooth**" edited by the [TipsMake](#) team. We hope this article has provided you with many useful tech tips and tricks. You can search for similar articles on tips and guides. Thank you for reading and for following us regularly.