

# Instructions on how to view Wi-Fi passwords on Windows 10

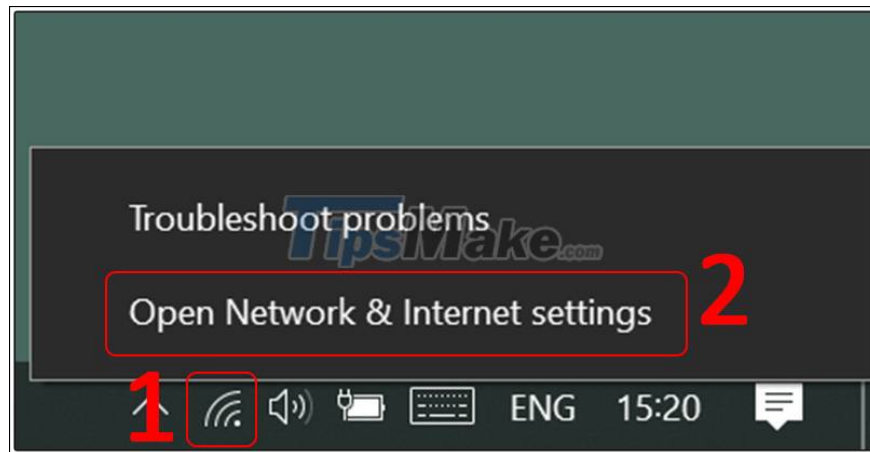
What if you want to share your Wifi password with your friends, but have forgotten the password? Click to see the article now to see how to view Wi-Fi passwords on Windows 10 simple!

You have forgotten the Wi-Fi password that your computer is connected to, so how can I know the Wi-Fi password? Good news for you because this article will help you see the Wi-Fi connected password on Windows 10 quickly and simply.

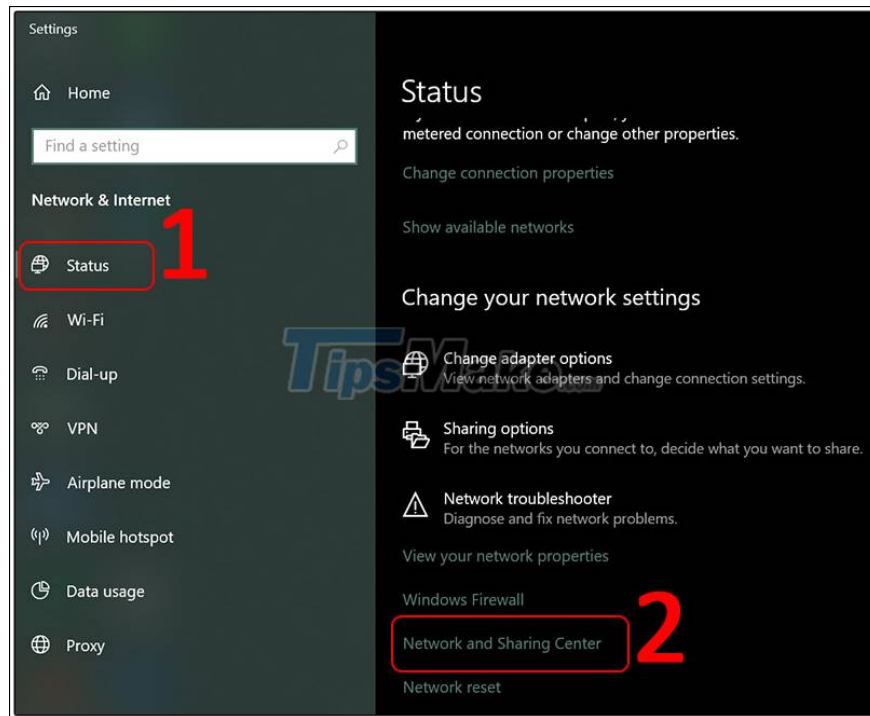
## 1. How to see the password for Wi-Fi connecting to a computer on Windows 10

### - How to view with Open network & Internet settings

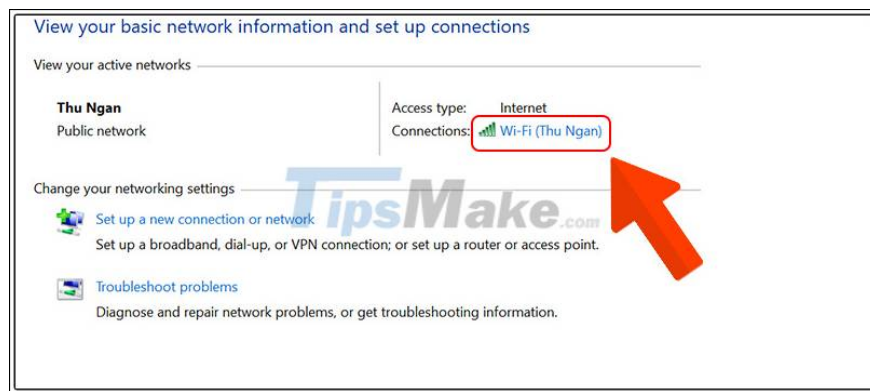
Step 1: Right-click on the Wifi icon on the Taskbar> Select Open Network & Internet settings.



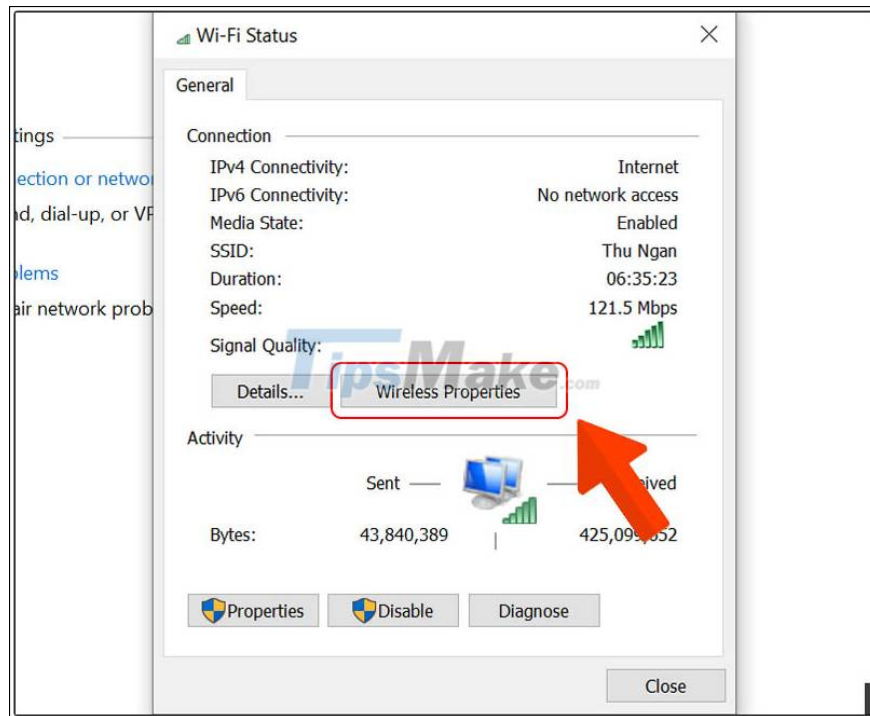
Step 2: Select Status> Select Network and Sharing Center.



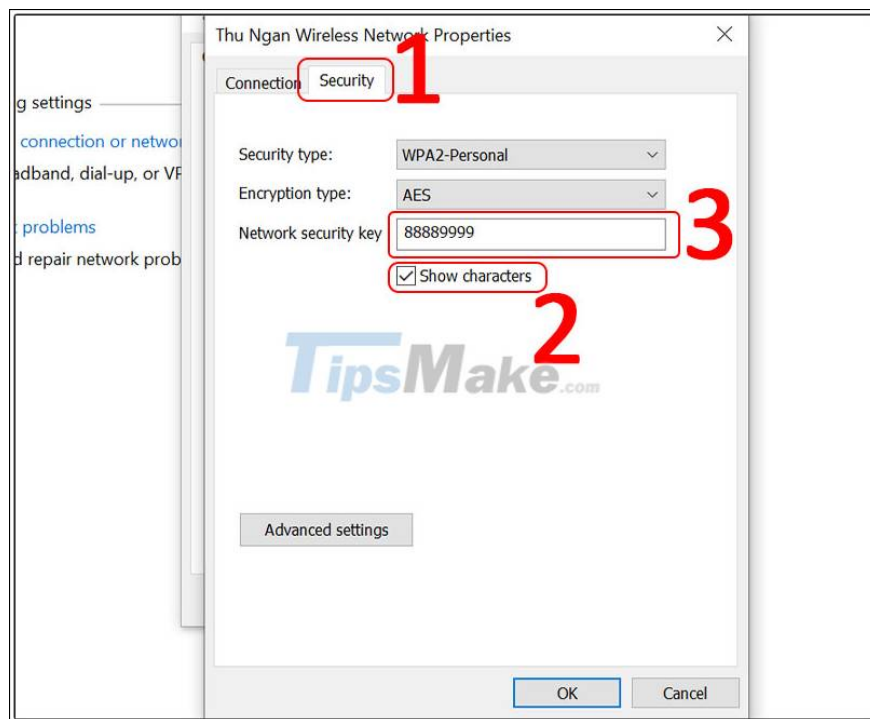
Step 3: Select the Wifi you are connecting to in the Connections section.



Step 4: Select Wireless Properties.



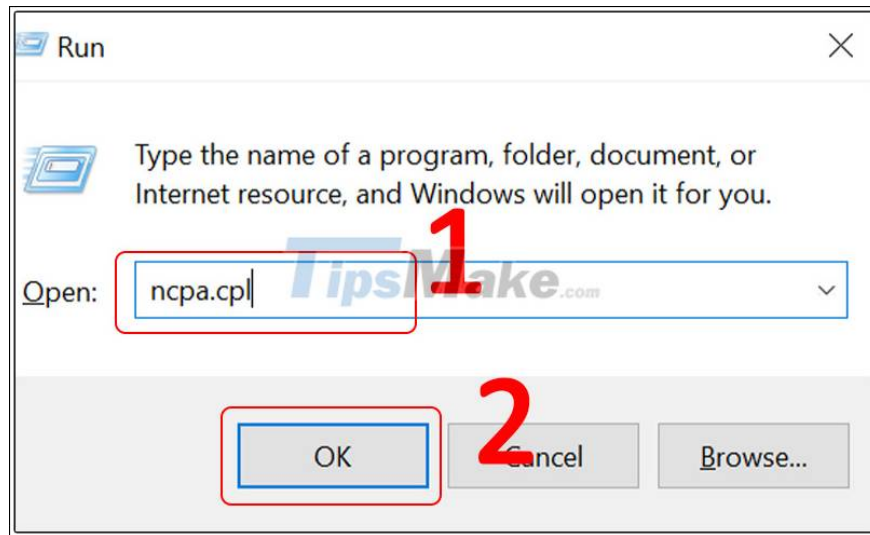
Step 5: Select Security> Select Show characters> Then you will see the password in the Network security key.



### - How to view by Run dialog box

Step 1: Press the key combination Windows + R.

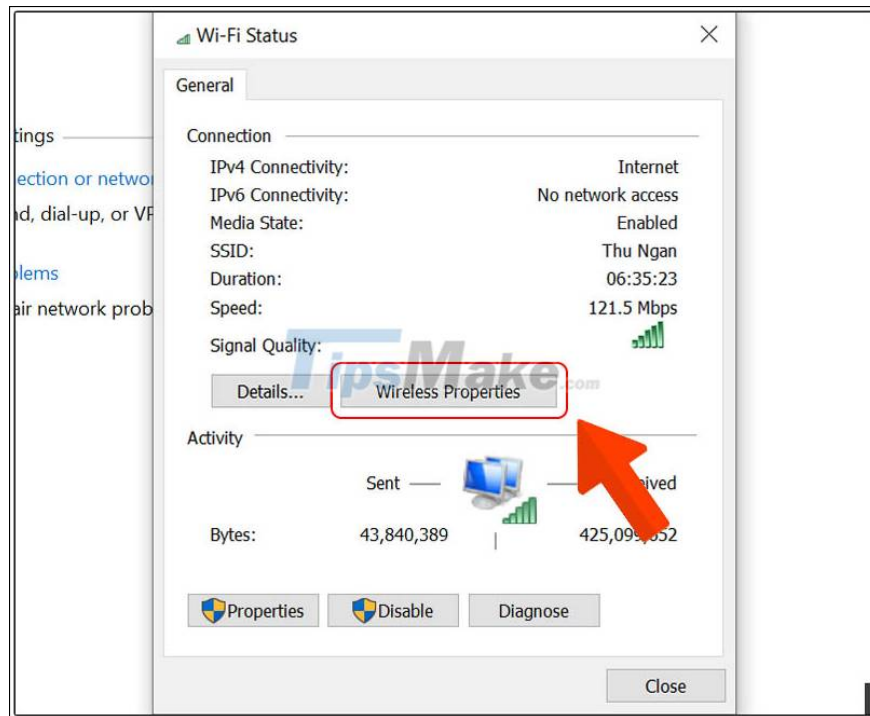
Step 2: Enter 'ncpa.cpl'> Click OK.



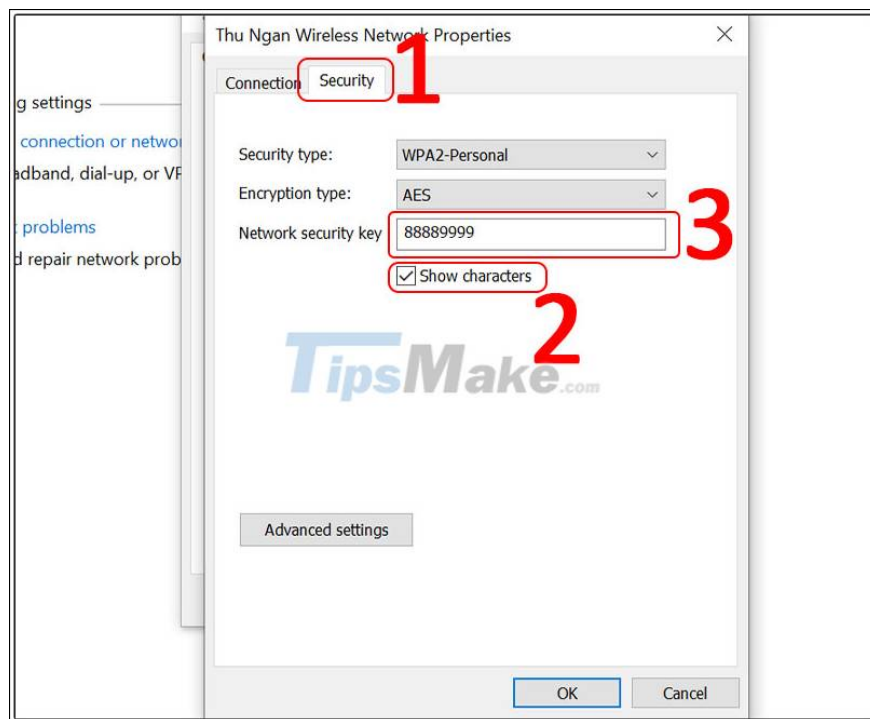
Step 3: Select Wi-fi.



Step 4: Select Wireless Properties.

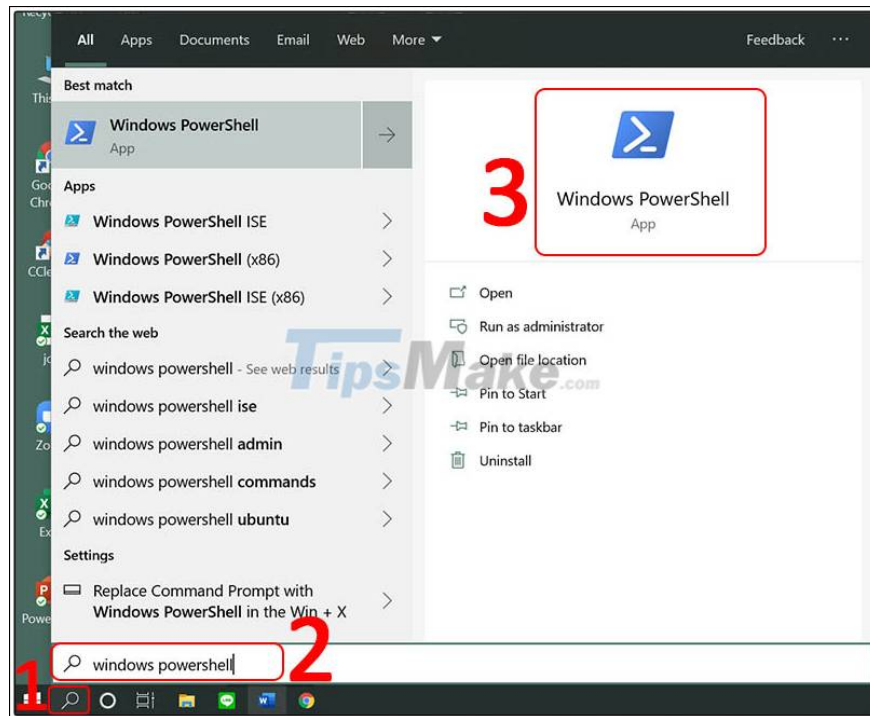


Step 5: Select Security> Select Show characters> Then you will see the password in the Network security key.

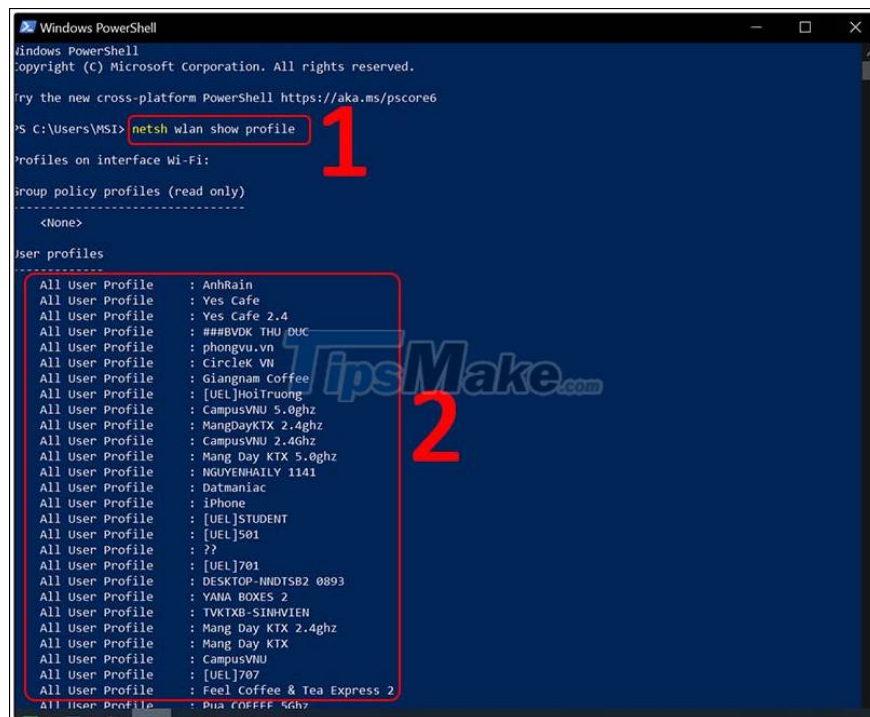


## 2. How to see the password for Wi-Fi ever connected to a computer on Windows 10

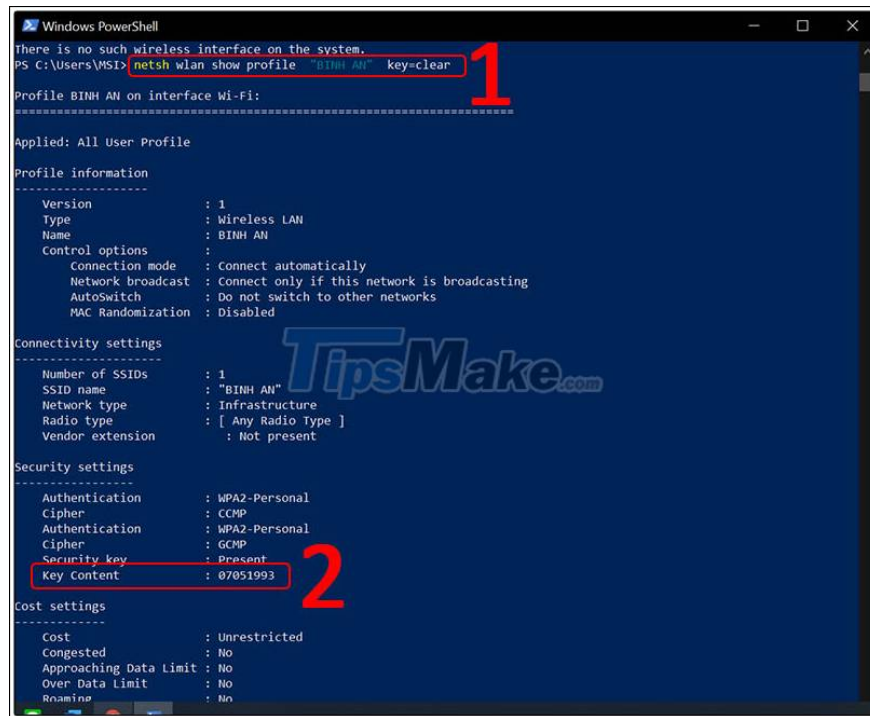
Step 1: Select the Search icon> Type 'windows powershell'> Select Windows PowerShell application.



Step 2: After the window appears, type the command 'netsh wlan show profile' to display the Wi-Fi you have connected to.



Step 3: Type the command netsh wlan show profile 'wifi name' key = clear to know the password of the wifi to find> The Key Content section displays the Wifi password you need to find.



```
Windows PowerShell
There is no such wireless interface on the system.
PS C:\Users\MSIX> netsh wlan show profile "BINH AN" key=clear 1
Profile BINH AN on interface Wi-Fi:
-----
Applied: All User Profile
Profile information
-----
Version           : 1
Type              : Wireless LAN
Name              : BINH AN
Control options   :
Connection mode   : Connect automatically
Network broadcast : Connect only if this network is broadcasting
AutoSwitch        : Do not switch to other networks
MAC Randomization : Disabled
-----
Connectivity settings
-----
Number of SSIDs   : 1
SSID name         : "BINH AN"
Network type      : Infrastructure
Radio type        : [ Any Radio Type ]
Vendor extension  : Not present
-----
Security settings
-----
Authentication    : WPA2-Personal
Cipher             : CCMP
Authentication    : WPA2-Personal
Cipher             : GCMP
Security key       : Present
Key Content        : 07051993 2
-----
Cost settings
-----
Cost               : Unrestricted
Congested          : No
Approaching Data Limit : No
Over Data Limit    : No
Roaming            : No
```

The article has instructed you how to view the Wifi password on your computer quickly, hopefully after consulting the article you can see the Wifi password you want.

Thank you for viewing the article, see you in the next posts.

You finished reading the article "**Instructions on how to view Wi-Fi passwords on Windows 10**" edited by the [TipsMake](#) team. We hope this article has provided you with many useful tech tips and tricks. You can search for similar articles on tips and guides. Thank you for reading and for following us regularly.