

Instructions on how to turn on bluetooth on pc in the simplest way

Each operating system will have a different way to turn on Bluetooth on a PC. How to turn it on quickly without affecting work, study and entertainment.

Nowadays, all technology devices have Bluetooth connectivity. Because it brings many conveniences in life, work as well as in study. So the question is: 'Can desktop computers connect to Bluetooth'? If so, **how to turn on Bluetooth on a PC** . Let's learn how to connect Bluetooth to a PC with TipsMake!

Benefits of ways to enable Bluetooth on PC

Bluetooth is a wireless technology for connecting and transferring data between devices within a short range. You can use this wireless connection on devices such as mobile phones, tablets, headphones, speakers, mice, keyboards, etc.



Knowing **how to turn on Bluetooth on your PC** will help you easily master the following technological utilities:

1. Transmit audio, video, and data across different devices without using cables.
2. Connect to wireless devices such as speakers, printers or keyboards,. for easy and convenient use.
3. Bluetooth connectivity allows you to remotely control various devices such as computers, TVs, DVD players or auto control devices.

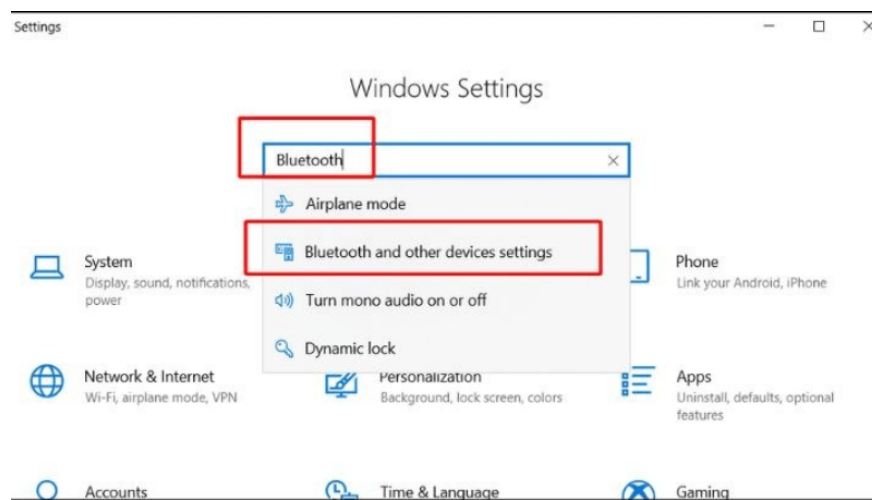
How to check if PC has bluetooth?

Before learning **how to turn on Bluetooth on your PC**, you need to check if your desktop computer has Bluetooth. Here are 3 ways that TipsMake has listed, so you can check most easily.

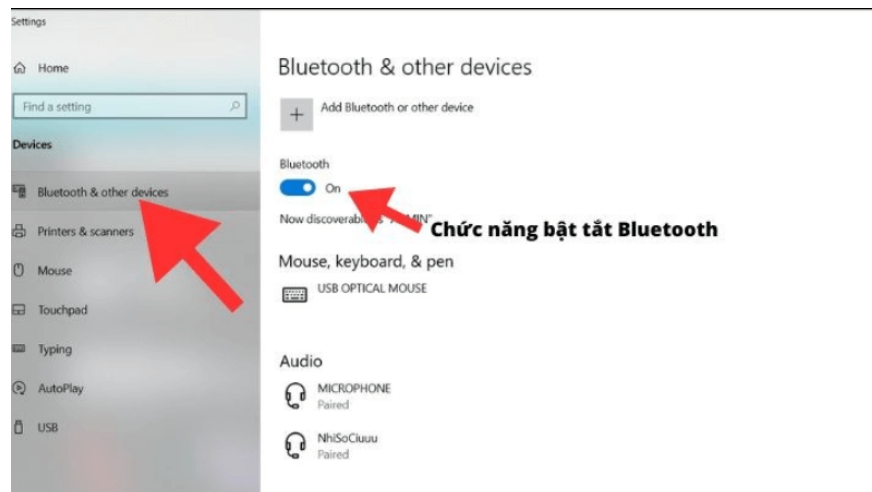
Instructions for checking in settings

In the lower left corner of the screen, click on the Window icon, go to Settings and select Devices.

Or in the Settings section, enter the keyword 'Bluetooth' in the search bar in the Window Settings section. Then, select Bluetooth and other devices settings.



If your PC already has Bluetooth, the screen will display as shown below. The simple way to turn on Bluetooth on your PC is to switch Bluetooth to 'On' mode to be able to search for other Bluetooth devices.

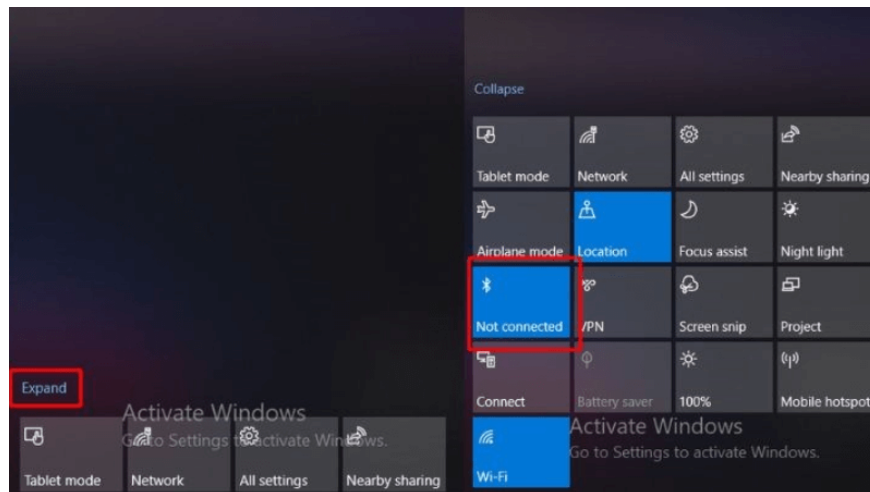


Use Action Center tool to check how to turn on bluetooth on PC

To open the Action Center tool on your desktop to enable Bluetooth on your PC, simply press the Windows + A key combination.



Then, the Action Center interface appears, click on Expand. If your device has bluetooth, it will appear here.



Instructions for checking the computer body

There are some devices that will have physical switches to toggle the connection, for example: Wifi and Bluetooth. It can be a small on/off button on the computer body or it can be a shortcut from the keyboard, through the function keys.

How to set up bluetooth on PC

After completing the testing steps, if your computer already has a bluetooth device, you just need to turn this function on.

If in the opposite case, your PC does not support bluetooth technology. The only way is to add an external bluetooth device. After successfully installing **the way to enable bluetooth on your PC** by supporting the external device, you can use the above 3 ways to check if the computer has bluetooth function.

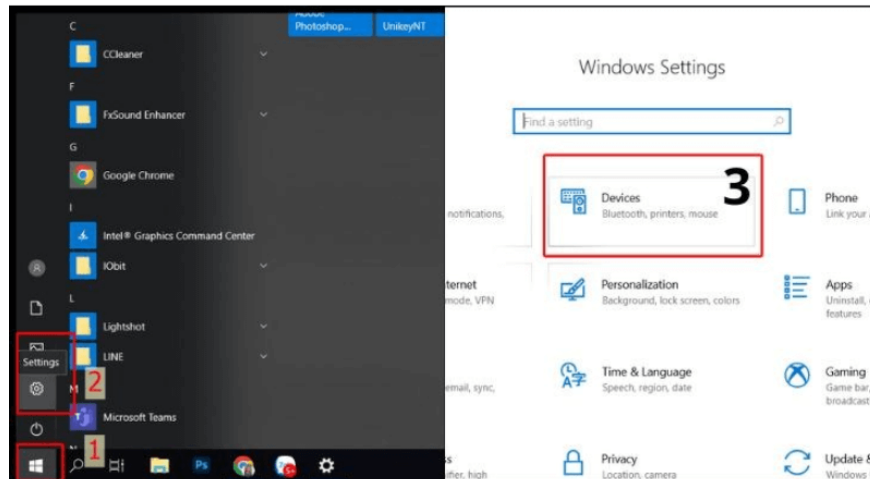
How to turn on Bluetooth on PC through detailed steps

To answer the question: 'How to connect bluetooth headphones to a computer?'. 'How to connect a pc to a bluetooth speaker' or any other wireless device, don't skip the detailed steps that TipsMake has listed below.

Instructions on how to turn on Bluetooth on PC in Windows

Step 1: Open Bluetooth connection on peripheral devices

Step 2: Access bluetooth on your desktop by selecting Start > Setting > Devices.

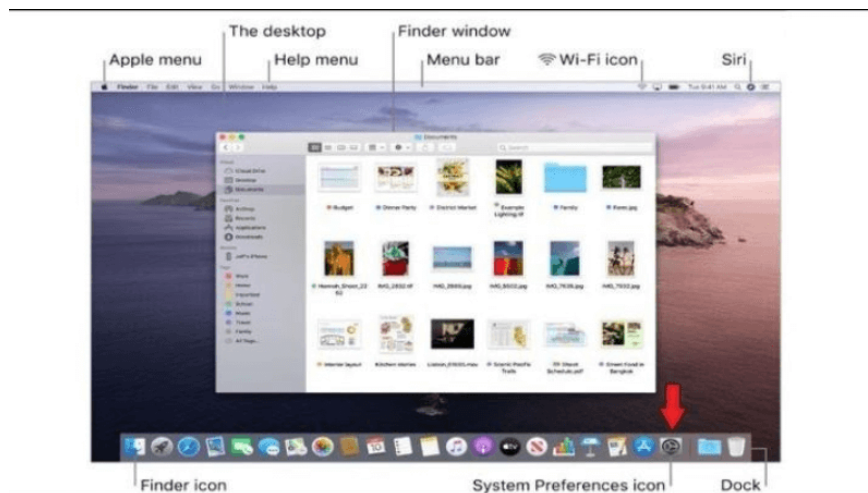


Step 3: In the Bluetooth & order devices section, you can choose to connect to peripheral devices corresponding to your usage needs such as: mouse, keyboard, stylus, TV,.

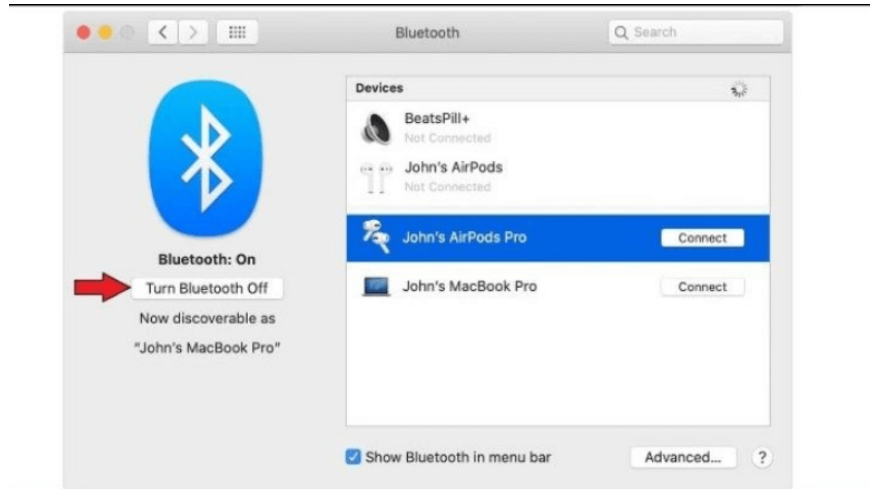
How to enable Bluetooth on PC in macOS

Step 1: Make sure the peripheral devices have Bluetooth enabled.

Step 2: On the MacBook home screen, go to the Dock Menu toolbar. Then select the System Preferences icon.



Step 3: Click on Bluetooth and select Turn Bluetooth on to turn on Bluetooth connection.



Step 4: Finally select the peripheral device you want to connect.



In the above article, TipsMake has guided you **how to turn on Bluetooth on your PC** . We hope that with that useful information will help you do it successfully. If you have any questions, please leave a comment below, TipsMake's consulting team will answer for you!

You finished reading the article "**Instructions on how to turn on bluetooth on pc in the simplest way**" edited by the [TipsMake](#) team. We hope this article has provided you with many useful tech tips and tricks. You can search for similar articles on tips and guides. Thank you for reading and for following us regularly.