

Instructions on how to set, customize, turn on, turn off Autoplay on Windows 10

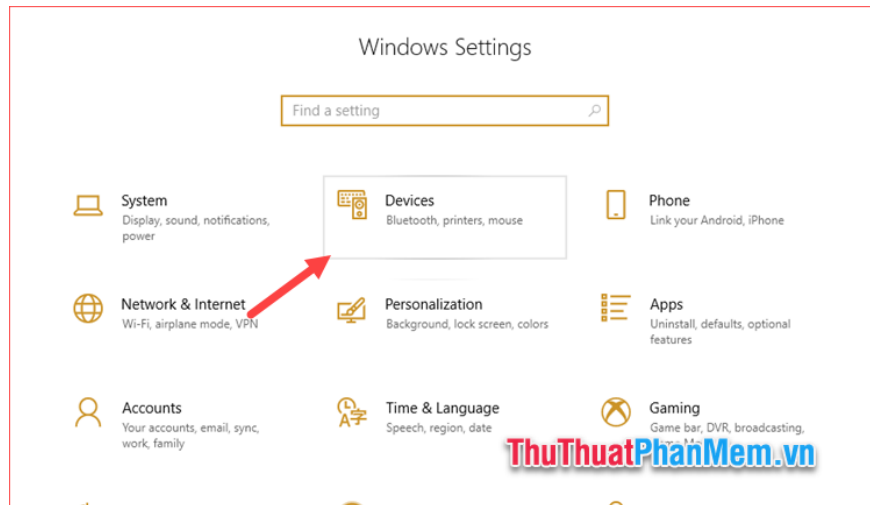
Instructions on how to set, customize, turn on, turn off Autoplay on Windows 10. AutoPlay is a feature to detect the type of device you have attached to your computer and automatically open that device. For example, when you connect an external storage device such as a CD, DVD, usb or memory card

AutoPlay is a feature that detects the type of device you have attached to your computer and automatically opens it. For example, when you connect an external storage device such as a CD, DVD, usb or memory card to your computer, you often see Windows displaying an AutoPlay popup window. However, this feature automatically runs when you connect devices, USB drives, drives, . so it can be dangerous for the computer because viruses can invade immediately when you connect the device. on. The following article TipsMake.com will guide you some ways to turn off the AutoPlay feature on Windows 10, please follow along!

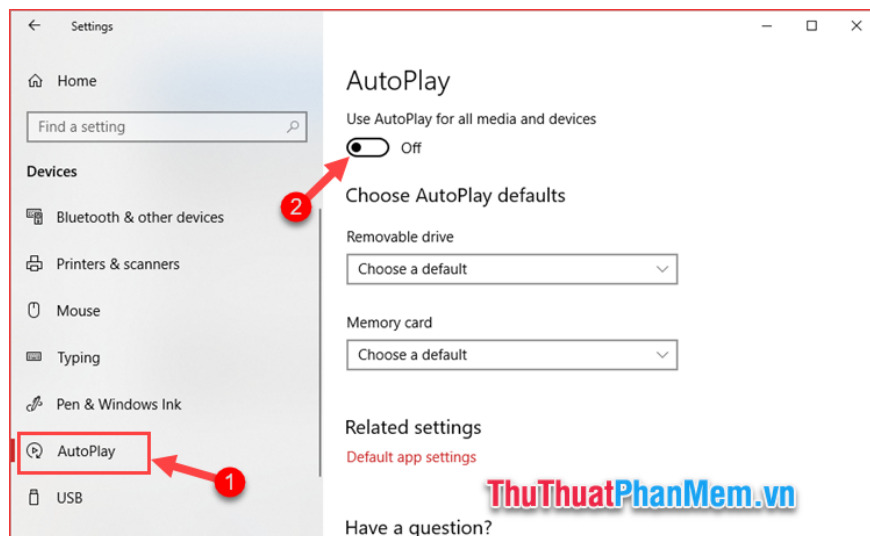


Method 1: Turn off AutoPlay in Setting

Step 1: Open Settings in Windows 10 and select **Devices**

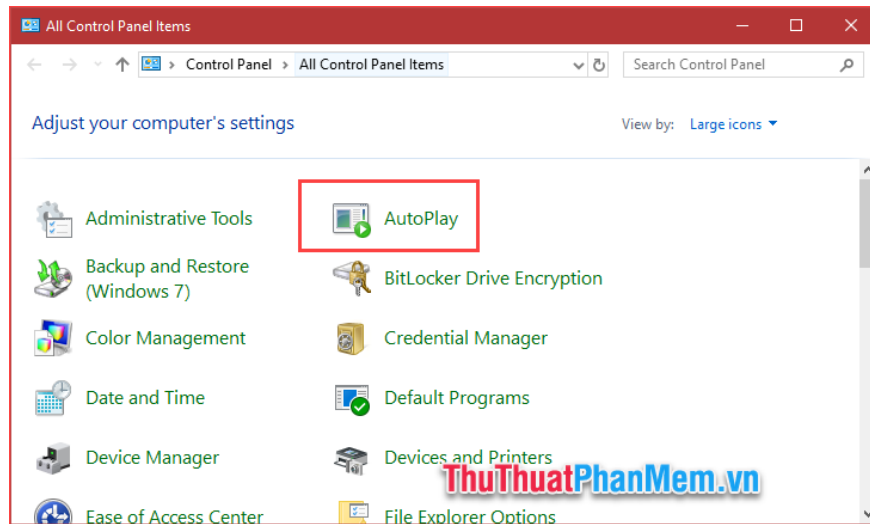


Step 2 : In the new window, select **AutoPlay** and then select **Use AutoPlay for all media and devices** from **On** to **OFF**.

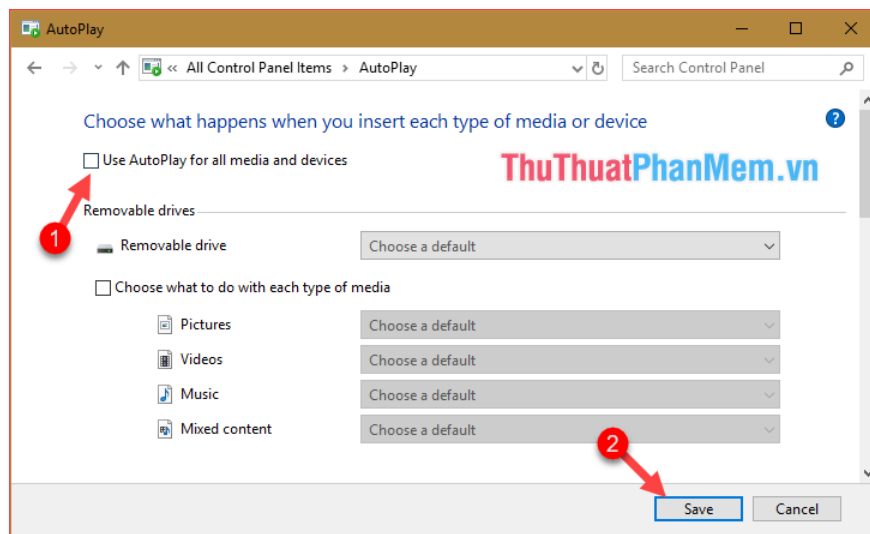


Method 2: Turn off AutoPlay in Control Panel

Step 1 : Open Control Panel then select **AutoPlay**

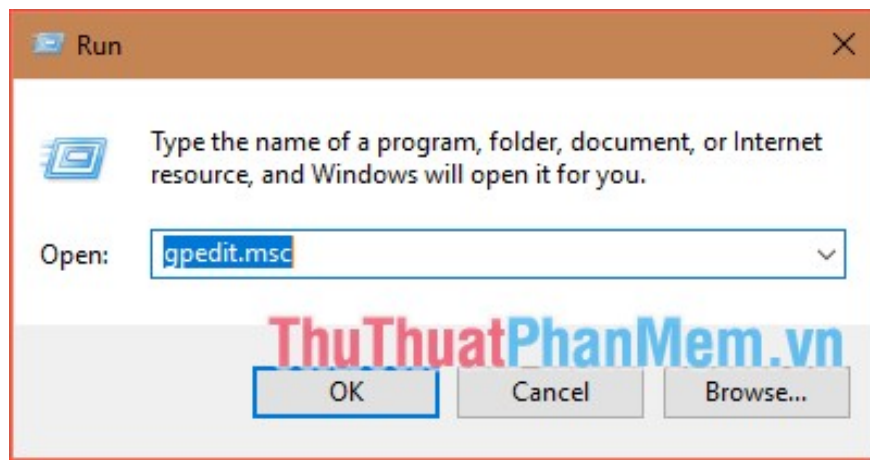


Step 2 : In the new window, uncheck the **Use AutoPlay** box for all media and devices, then click **Save** .



Method 3: Turn off AutoPlay in Group Policy Editor

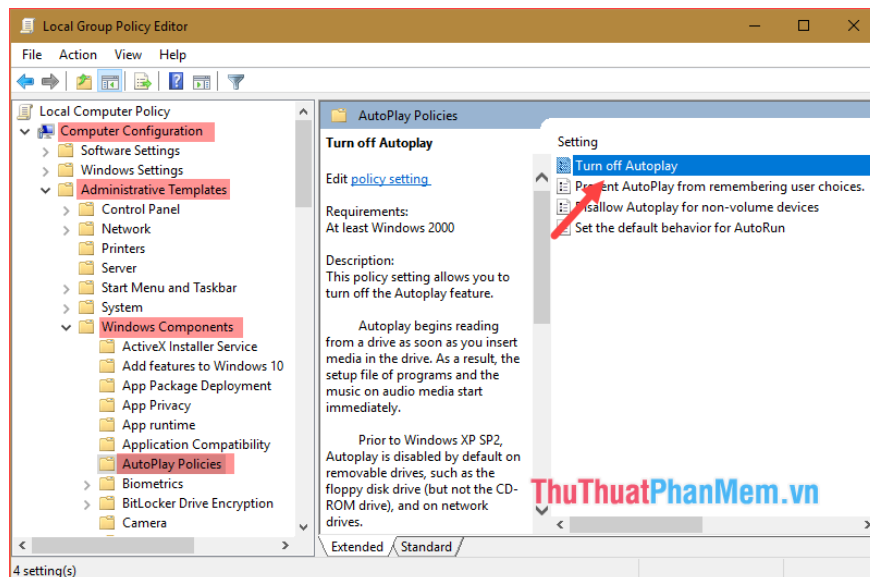
Step 1 : You press **Windows + R** to open the **Run** dialog box, then enter the command **gpedit.msc** and press **Enter**.



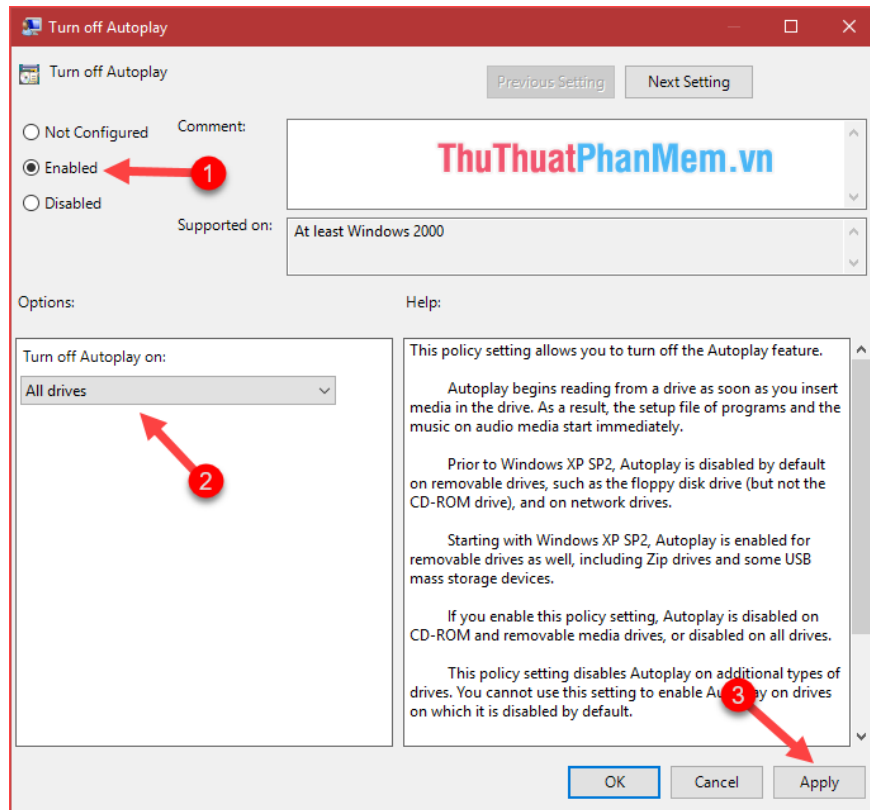
Step 2 : In the Group Policy Editor window, choose the following path:

Computer Configuration -> Administrative Templates -> Windows Components -> AutoPlay Policies.

Then you double click on the **Turn off AutoPlay section**



Step 3 : In the new window, select Enabled, then select All drives and finally click Apply and then OK.



Above TipsMake.com has instructed you 3 simple ways to turn off AutoPlay on windows 10. Wish you success!

You finished reading the article "**Instructions on how to set, customize, turn on, turn off Autoplay on Windows 10**" edited by the [TipsMake](#) team. We hope this article has provided you with many useful tech tips and tricks. You can search for similar articles on tips and guides. Thank you for reading and for following us regularly.