

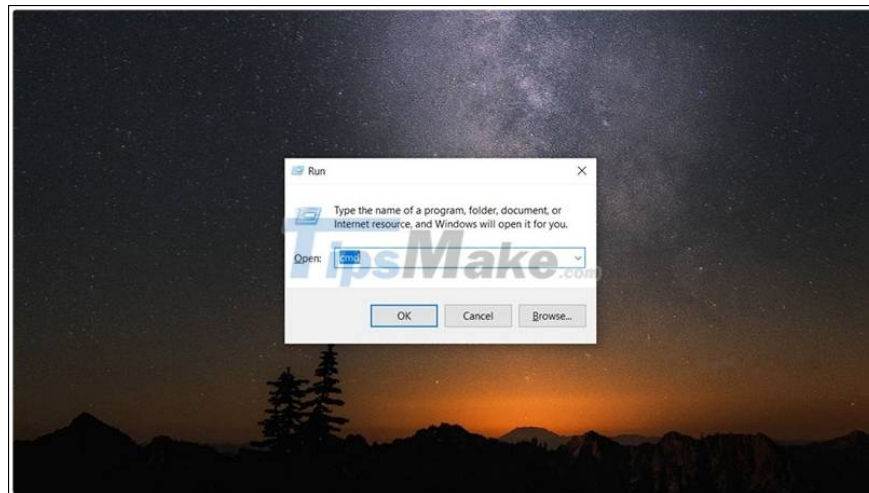
Instructions on how to see the connected WiFi password on your laptop

You want to share the WiFi password for your friends to connect together but you forgot the password of that WiFi, then this article will be the solution for you.

You can completely review all the passwords of the WiFi you have ever connected right on your laptop .

Instructions on how to view saved WiFi passwords on laptop

Step 1: Type cmd in the Windows search box or the Win + R key combination and then enter cmd.



Step 2: In the cmd window, type the following command: netsh wlan show profile. This is the command to display all the WiFi that you have ever connected, here you find the WiFi that you want to review the password.

```
C:\Windows\system32\cmd.exe
Microsoft Windows [Version 10.0.19041.985]
(c) Microsoft Corporation. All rights reserved.

C:\Users\LENOVO>netsh wlan show profile

Profiles on interface Wi-Fi:

Group policy profiles (read only)
-----
<None>

User profiles
-----
All User Profile : Ticos Coffee
All User Profile : Angel in us AP_5GHz
All User Profile : The Coffee House
All User Profile : DO 5GHz
All User Profile : DO 2.4Ghz
All User Profile : Galaxy Note10 Lite76c9
All User Profile : Amigo Cafe-B 5g
All User Profile : dienmaybaolinh.vn
All User Profile : Cris Pham 88
All User Profile : Cris An
All User Profile : Cafe my friend 5G_vnpt
All User Profile : Cafe MF VNPT 3
All User Profile : demo

C:\Users\LENOVO>
```

Step 3: When you find the WiFi to see the password, then type this command: netsh wlan show profile name='WiFi name' key= clear.

```
C:\Windows\system32\cmd.exe
Microsoft Windows [Version 10.0.19041.985]
(c) Microsoft Corporation. All rights reserved.

C:\Users\LENOVO>netsh wlan show profile name="Ticos Coffee" key=clear

Profile Ticos Coffee on interface Wi-Fi:
-----
Applied: All User Profile

Profile information
-----
Version : 1
Type : Wireless LAN
Name : Ticos Coffee
Control options :
Connection mode : Connect automatically
Network broadcast : Connect only if this network is broadcasting
AutoSwitch : Do not switch to other networks
MAC Randomization : Disabled

Connectivity settings
-----
Number of SSIDs : 1
SSID name : "Ticos Coffee"
Network type : Infrastructure
Radio type : [ Any Radio Type ]
Vendor extension : Not present

Security settings
```

Step 4: Now the cmd window will display a lot of parameters but you don't need to care about anything, just find the Key Content line which is the password of the WiFi you want to find again.

```
C:\Windows\system32\cmd.exe

Connectivity settings
-----
Number of SSIDs : 1
SSID name : "Ticos Coffee"
Network type : Infrastructure
Radio type : [ Any Radio Type ]
Vendor extension : Not present

Security settings
-----
Authentication : WPA2-Personal
Cipher : CCMP
Authentication : WPA2-Personal
Cipher : CCMP
Security key : Present
Key Content : ticoscoffee247

Cost settings
-----
Cost : Unrestricted
Congested : No
Approaching Data Limit : No
Over Data Limit : No
Roaming : No
Cost Source : Default

C:\Users\LENOVO>
```

Here's a tip for checking WiFi's password to make it easier to share with friends and family. Hope this article is useful to you. Good luck.

You finished reading the article "**Instructions on how to see the connected WiFi password on your laptop**" edited by the [TipsMake](#) team. We hope this article has provided you with many useful tech tips and tricks. You can search for similar articles on tips and guides. Thank you for reading and for following us regularly.
