

Instructions on how to quickly connect Bluetooth headphones to a laptop

How to connect Bluetooth headphones to your laptop is extremely simple for you to enjoy high quality sound and convenience. Let's find out with HACOM here.

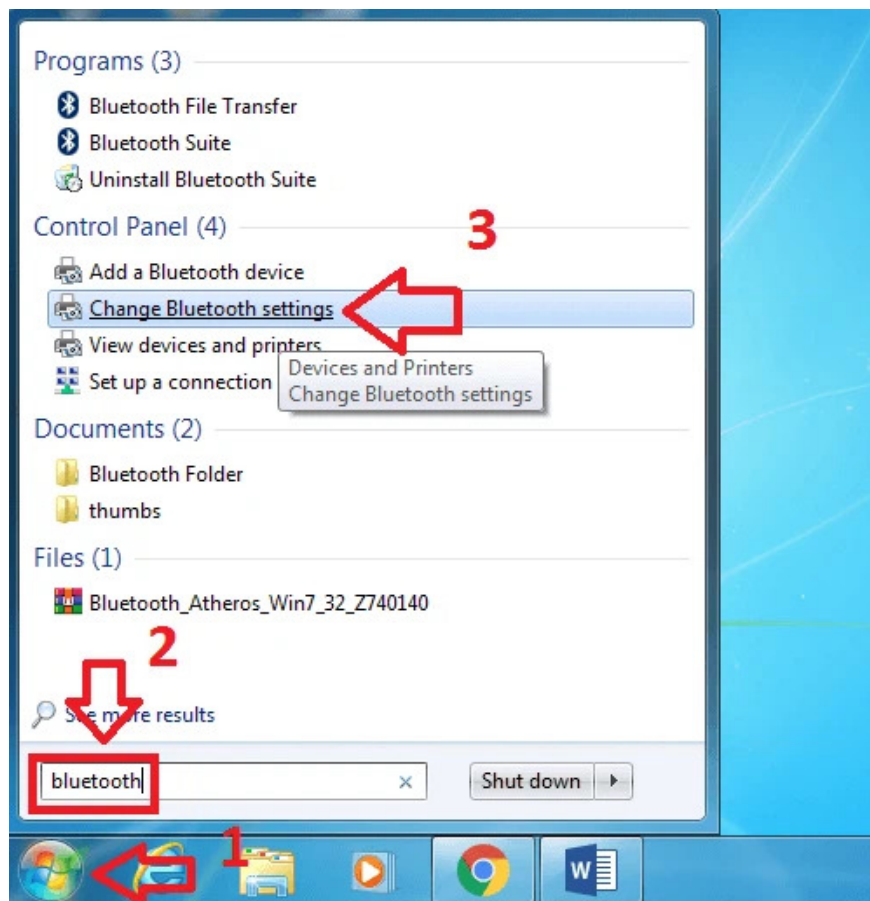
In today's digital age, using Bluetooth headphones to experience music, watch movies, or even make calls on laptops has become more popular than ever. However, not everyone knows how to connect them quickly and effectively. In this article, TipsMake will guide you step by step on how to **connect Bluetooth headphones to your laptop** so you can enjoy high-quality sound and the convenience of wireless connection. Discover how to do it right below.

How to connect Bluetooth headset to laptop win 7

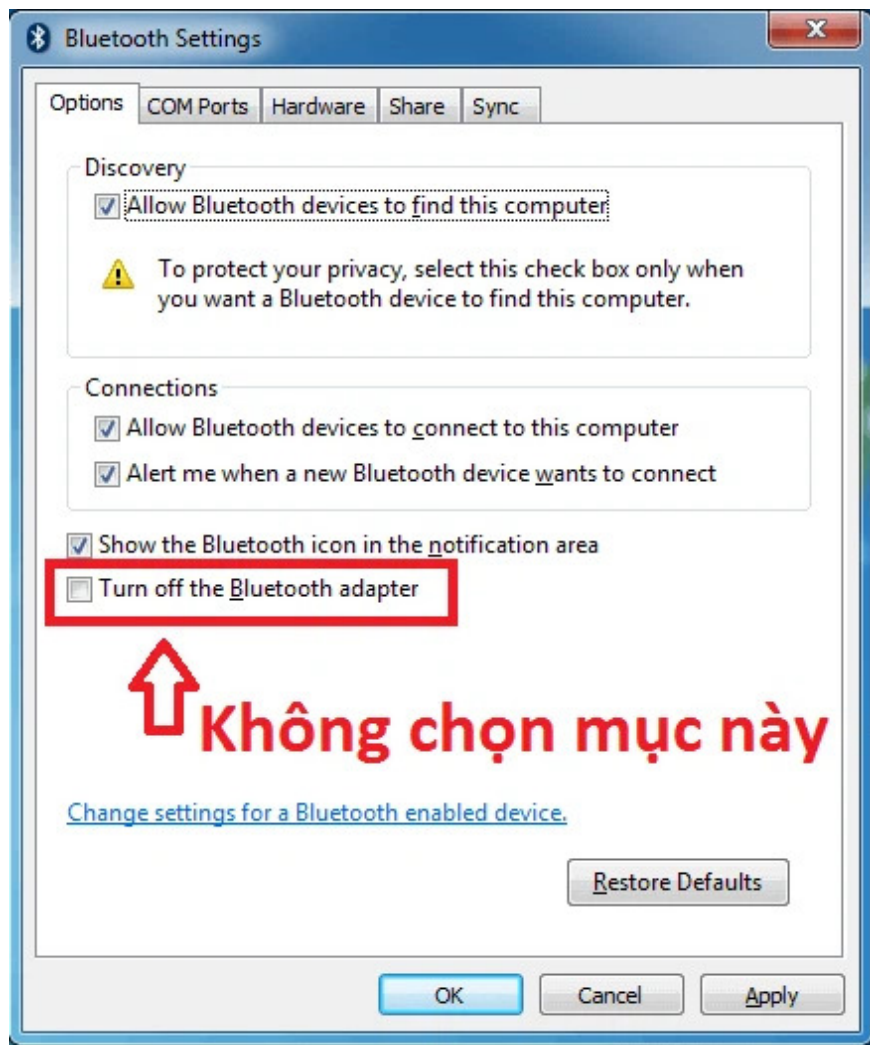
To connect *Bluetooth headphones to a* Windows 7 laptop, first of all, you need to place the two devices close together and make sure there are no physical obstacles between them. This helps ensure the connection process is faster and smoother. Next, follow the steps below:

Step 1: Bring the Bluetooth Settings dialog box to the Taskbar

1. Start by clicking the Start button in the bottom left corner of your computer screen.
2. In the search box, enter the keyword "Bluetooth".
3. Select "Change Bluetooth settings" when it appears in the search results.



When the Bluetooth Settings dialog box appears, check all the boxes on the screen except the "Turn Off The Bluetooth Adapter" line, then click "Apply" and "OK" to save the settings.



At this point, the Bluetooth icon will appear on the computer's Taskbar, making future operations more convenient.

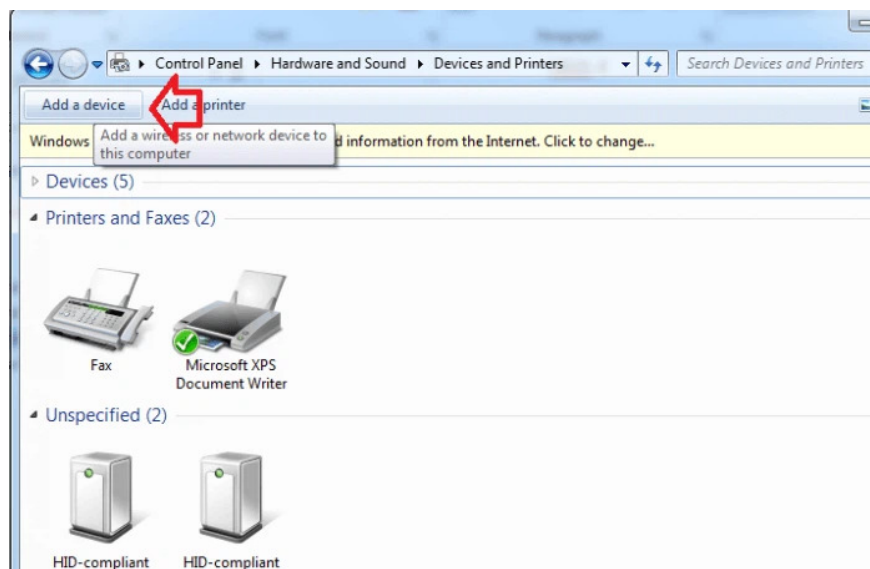
Step 2: Open and turn on Bluetooth on your headset

Step 3: Connect the Bluetooth headset to the computer

1. Press the Windows button on your keyboard or select Start in the left corner of the screen to open the Start Menu.
2. Type "Control Panel" into the search box to find the Control Panel dialog box.
3. When the Control Panel dialog box appears, select "View Devices and Printers".



1. Next, select "Add A Device" to add a new device to your computer and then "Next" to connect the two devices. Completing this step means you have completed this method of connecting Bluetooth headphones to a Windows 7 laptop.



Instructions on how to connect Bluetooth laptop to headphones win 8

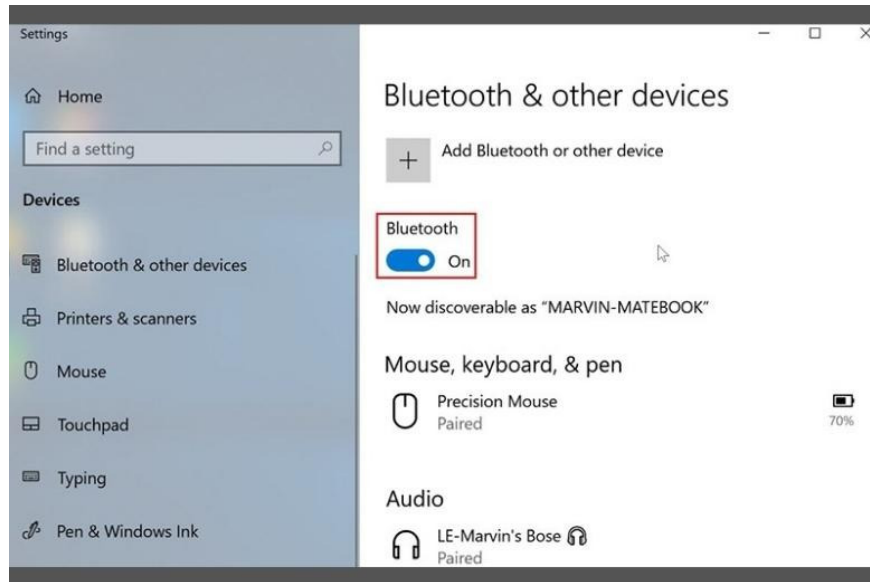
Compared to previous versions of Windows, Windows 8 and 8.1 have been equipped with many special features to optimize and enhance the user experience. Therefore, when you use Windows 8, you can perform the same steps as on Windows 7. However, Windows 8.1 has some certain differences, below are instructions on how to connect Bluetooth **laptop** to specific headphones:

Step 1: Press the Windows + C shortcut key combination to open the Settings panel.

Step 2: Select "Change PC Settings" at the bottom of the screen.

Step 3: Continue to select "PC and Devices" to proceed with the installation.

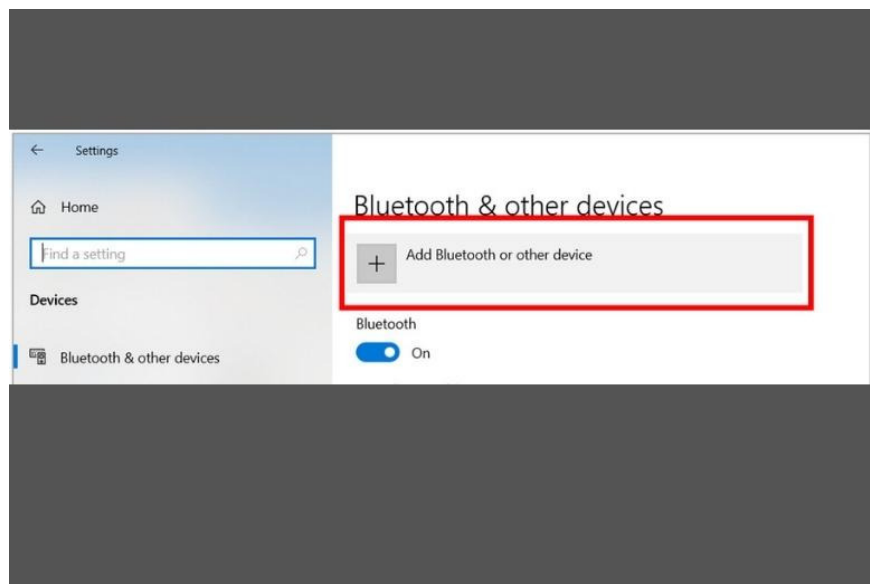
Step 4: Click on "Bluetooth" and turn it to "On".



Once you have turned on Bluetooth, you can then follow these steps to connect your Bluetooth headset:

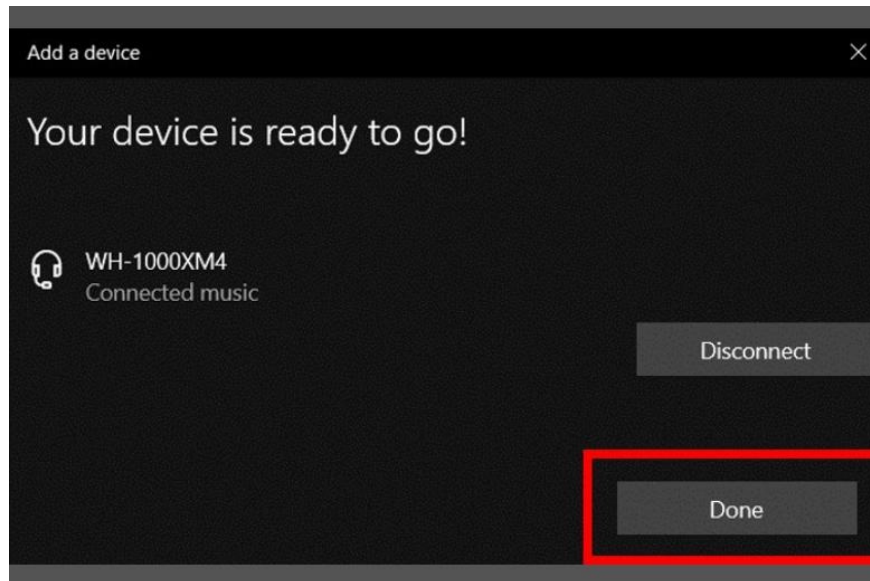
Step 1: Place the Bluetooth headset you want to connect near your laptop and make sure that Bluetooth on your computer is also turned on following the steps mentioned above.

Step 2: Click on "Bluetooth & other devices" to make sure Bluetooth is switched to "On", then select "Add Bluetooth or other device".



Step 3: Select "Bluetooth".

Step 4: On the window that appears, select your Bluetooth headset device, then click "Done" to complete the connection process.



How to connect Bluetooth headset to laptop win 10

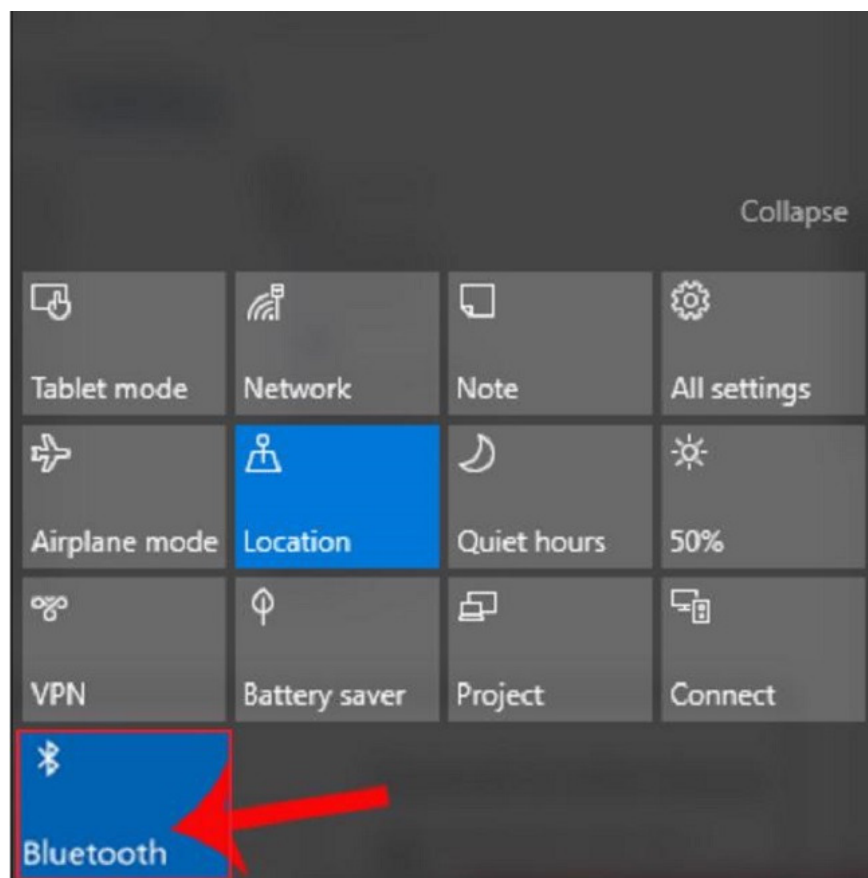
To connect Bluetooth headphones to a Windows 10 laptop, follow these steps:

Step 1: Open and turn on the headset Bluetooth

On Windows 10, to get started, you need to enable Bluetooth on your headphones. This is similar to what you do on other devices. To do this, simply press and hold the power button on your headphones for about 5 seconds to enable Bluetooth on them.

Step 2: Turn on Bluetooth on your laptop or computer

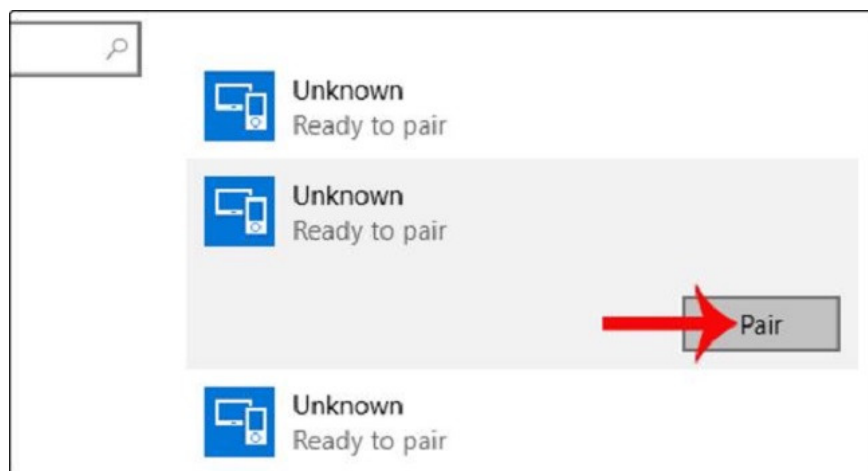
The next step in **how to connect Bluetooth headphones to a Windows 10 laptop** is to turn on Bluetooth on your computer. You can open the Bluetooth settings on your computer by clicking on the Action square icon in the lower right corner of your screen. Or you can also use the Windows + A key combination to open the "Action Center". Here, you will see the "Bluetooth" option and you need to make sure that it is in the "On" state.



Next, you can right-click on the Bluetooth icon and select "Go to settings". Or you can also right-click on the "Bluetooth" icon at the bottom right of the screen and select "Show Bluetooth Devices". This will cause the computer to scan and display a list of nearby Bluetooth devices.

Step 3: Connect Bluetooth

After you have done step 2, the name of your Bluetooth headset will appear in the list. You just need to click on that name and select "Pair" to proceed with the connection to the computer. Completing this process, you have completed the extremely simple way to connect Bluetooth headset to laptop win 10, your headset and computer will connect to each other and you will be able to use them conveniently.



Instructions to fix the error when Bluetooth headset cannot be connected to laptop

When connecting Bluetooth headphones to your laptop, things don't always go smoothly and problems can occur. Here are some ways you can fix these errors:

Check Bluetooth connection status : Sometimes, the error can occur if you have not enabled Bluetooth connection on both devices, for example, computer and headset.

1. Open settings on your computer.
2. Select "Bluetooth & Other Devices".
3. Click "Add Bluetooth or Other devices" and go through the connection process again.

Update Bluetooth Drivers: If the error appears because the Bluetooth drivers on your computer are outdated or corrupted, you can try updating them. Here's how:

1. Step 1: Open Device Manager by pressing Windows + R key combination, then type "devmgmt.msc".
2. Step 2: In the list, find and open the "Bluetooth" item.

Right-click on the Bluetooth device you want to connect to and select "Update Driver" to complete the update process.

Connecting Bluetooth headphones to a laptop is no longer a complicated or difficult task. With the detailed and simple instructions that **TipsMake** has compiled in the above article, you have learned **how to connect Bluetooth headphones to a laptop** simply to enjoy high-quality sound and the convenience that Bluetooth headphones bring. Hopefully this article has brought you a lot of value. Wish you have the best sound experience on your laptop!

You finished reading the article "**Instructions on how to quickly connect Bluetooth headphones to a laptop**" edited by the [TipsMake](#) team. We hope this article has provided you with many useful tech tips and tricks. You can search for similar articles on tips and guides. Thank you for reading and for following us regularly.