

Instructions on how to map network drives in Windows 11

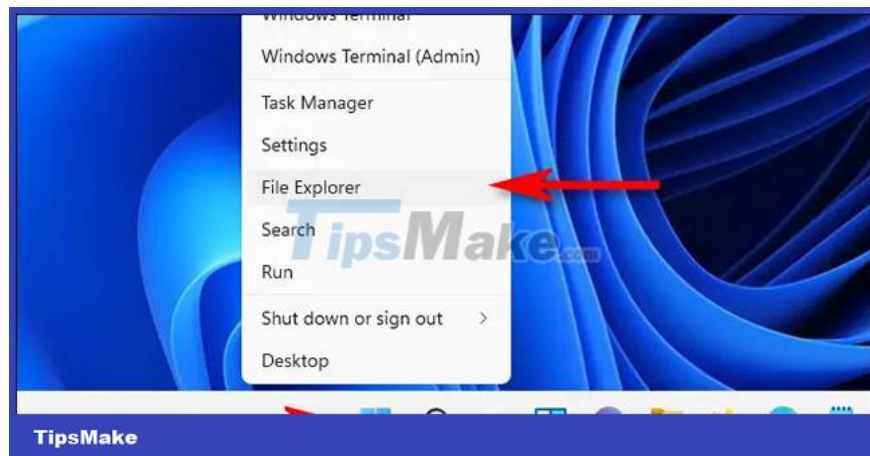
Accessing files from the local hard drive on the system is one of the simplest and most basic tasks for computer users. But what if you want to access files located on another PC's hard drive?

This can be done by mapping a network drive, which of course is a bit more complicated than accessing files from the local hard drive.

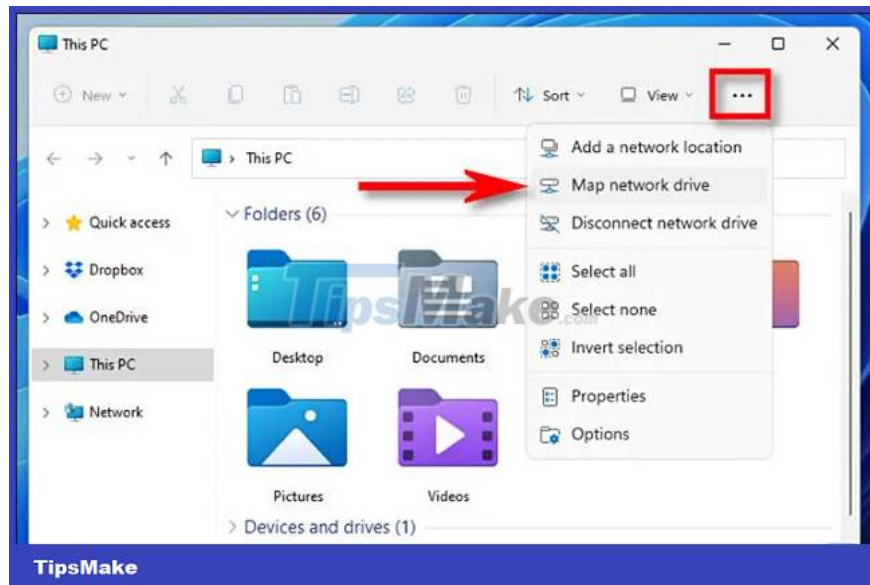
Location mapping can simply mean that you create a shortcut to another shared drive or folder on your network. After the mapping is successful, the mapped network drive will show up under This PC in File Explorer on your system. Below is the simplest process of mapping network drives in Windows 11.

How to map a network drive in Windows 11

First, open File Explorer on your Windows 11 PC by clicking on the File Explorer shortcut on the taskbar, or you can right-click the **Start** button and select ' **File Explorer** ' in the menu that appears.



In the File Explorer window, click the options button (three dots) in the toolbar, then select ' **Map Network Drive** ' in the menu that appears.

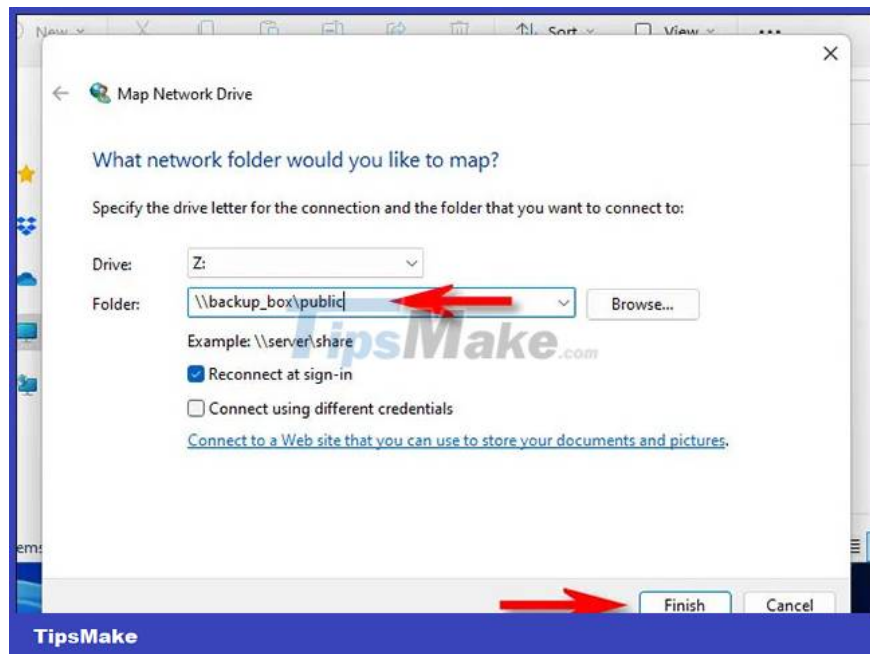


In the ' Map Network Drive ' window , click the ' Drive ' drop -down menu and select the drive letter that you will assign to the network drive. It can be any letter from the list, depending on your personal preference.

In the " Folder " field, enter the network device and share name. If you don't remember, you can click ' Browse ' to see the available devices on your local network.

If you want Windows to stay connected to this drive every time you log in, check the box next to the ' Reconnect at sign-in ' option. And if you want to connect using a different login (username and password) than those associated with your current Windows account, check ' Connect Using Different Credentials '.

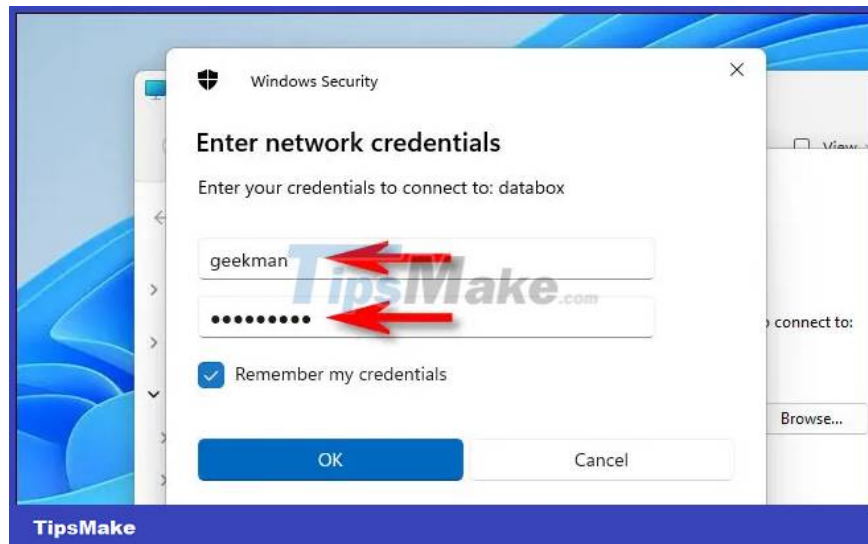
When you're done with the setup, click ' Finish '.



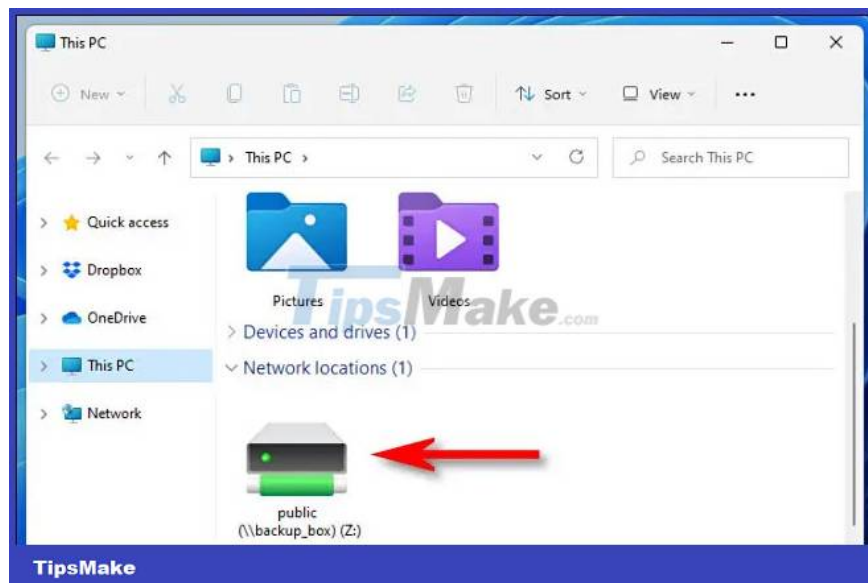
After you click ' Finish ', Windows 11 will try to connect to the network drive. In case your default credentials are incorrect, or if you have selected ' Connect Using Different Credentials ' in the last step, you will see the '

Windows Security ' window appear. The username and password needed to access the drive can be entered here.

If you want Windows to always remember this username and password for the drive (so you don't have to sign in again later), select '**Remember My Credentials**'. When you're done, click '**OK**'.



Windows 11 will connect to the drive and map it to the drive letter you selected. If you open File Explorer and look under '**This PC**', you'll see the mapped drive listed under '**Network Locations**'.

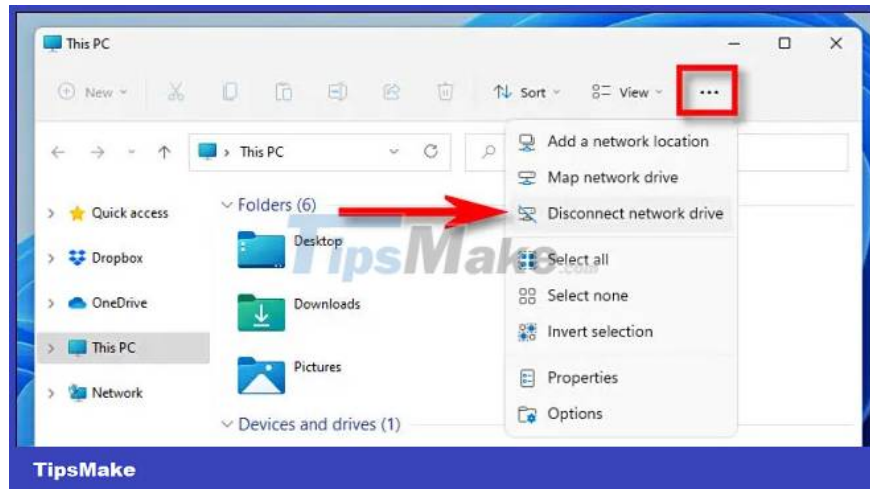


The mapped drive will also appear in the sidebar menu on the left side of the File Explorer window, under the '**Network**' section.

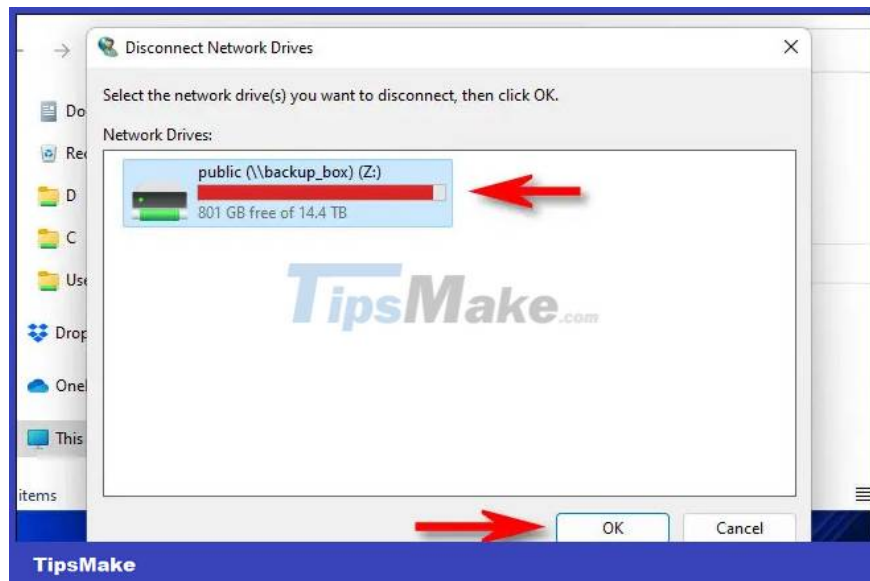
Whenever you open the mapped drive (if you have read and write permissions), you can use it almost like a regular local drive on the system. But be aware that performance experience may be slower than with a local drive, simply because data is being transferred to and from the network rather than through a local connection like USB or SATA.

How to disconnect a mapped network drive

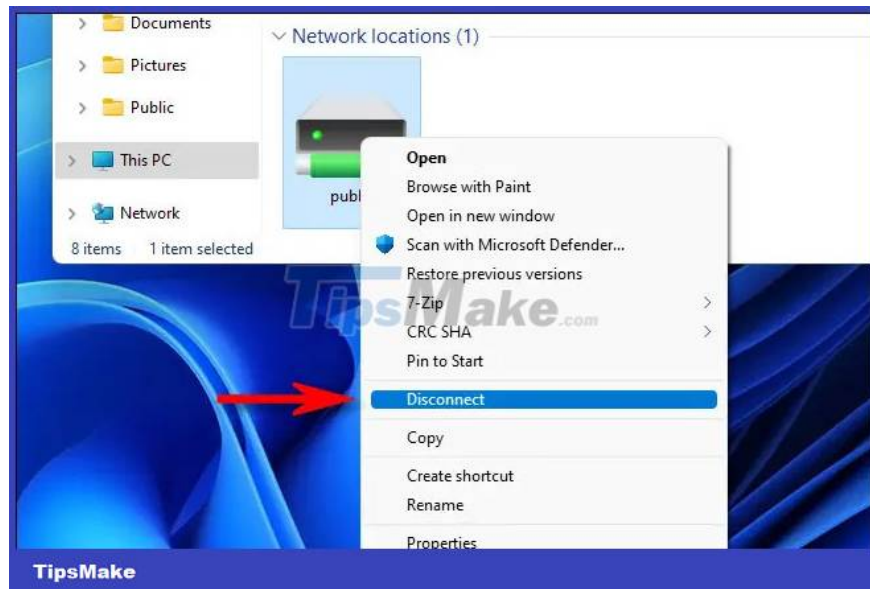
To unmount a mapped network drive, first open File Explorer. In the toolbar of any File Explorer window, click the three-dot button and select '**Disconnect Network Drive**'.



In the '**Disconnect Network Drives**' window that appears, select the drive you want to disconnect, then click '**OK**'.



Alternatively, you can locate the mapped drive in File Explorer, and then right-click it. Click '**Show More Options**' in the first menu that appears, then select '**Disconnect**' in the second menu.



The drive will be disconnected and no longer mapped. This will also release the previous host drive letter used by the mapped drive.

Hope you are successful.

You finished reading the article "**Instructions on how to map network drives in Windows 11**" edited by the [TipsMake](#) team. We hope this article has provided you with many useful tech tips and tricks. You can search for similar articles on tips and guides. Thank you for reading and for following us regularly.