

# Instructions on how to install HDD hard drive for PC for beginners

For those who are new to computers or are not technically savvy, adding an HDD to a PC is also a big obstacle. So how to install an HDD for a PC? Let's see the instructions below from HACOM.

With laptops or notebooks, installing a second hard drive is impossible because their size is too small, there is not enough free space for you to do that. However, with desktop computers, it is completely different. Installing a HDD for a PC is extremely easy. If one hard drive is still not enough to meet your work needs, you can install one or more more hard drives. So how to install an additional HDD?

## What is a PC hard drive?

Hard drive, whose English name is Hard Disk Drive (abbreviated HDD), is an indispensable data storage device for computers or laptops. Hard drive is a device that contains all user data such as operating system or windows, personal files.

In addition, the hard drive will determine the processing speed such as: Data transfer speed to portable hard drive, computer USB, data security, power consumption or CPU temperature.

## Benefits of adding a hard drive to your PC

Adding a hard drive to your PC will bring many benefits such as:

1. Increase data storage space without incurring much cost, and will also help increase the speed of data processing.
2. In addition, it helps reduce the intensity of main memory operation, increasing the lifespan of components and parts in the computer. In particular, installing an additional hard drive will help save power consumption for users.



## **Instructions on how to install an additional hard drive for your PC simply**

### **Step 1: Turn off the computer, unplug the power cord and remove the PC case**

To add a hard drive to your PC, you must first turn off the computer, unplug it, and remove the computer case.

#### **In this step you must note :**

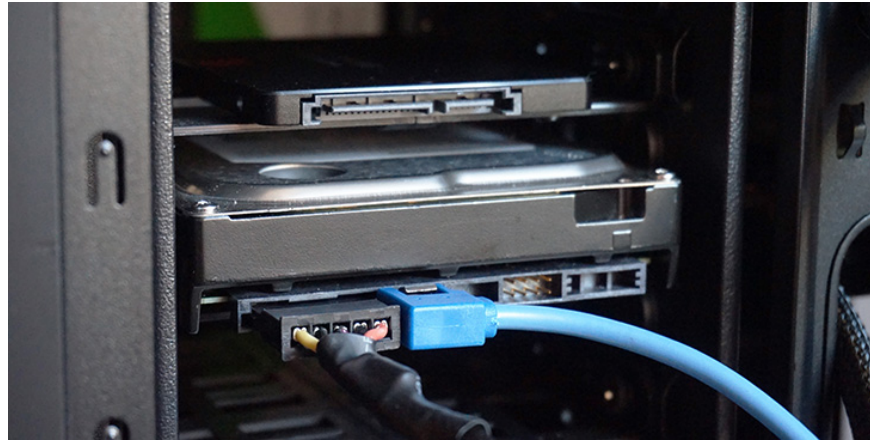
1. If the environment around the machine is prone to static electricity, before proceeding, you must purchase a grounding wire, then wrap it around your wrist.
2. Even if there isn't much static electricity around, you should be careful to ground your hands after touching the case before touching other components inside the device.

### **Step 2: Choose a hard drive compatible with your PC and install it.**

To add a hard drive to your PC, you need to choose a hard drive that is compatible with the PC model you are using. Once you have selected the appropriate hard drive, you press it into an empty space on the mounting bracket inside the machine. The mounting bracket is in the form of a sliding tray, so installation is not too difficult.

### **Step 3: Plug in the hard drive's SATA cable**

To connect the SATA cable, you need to find the cable marked SATA on the motherboard of the hard drive in the machine. Then proceed to connect the SATA cable of the new hard drive right next to that location.



#### **Step 4: Attach the power cable to the hard drive**

You need to find a SATA power cable that looks like a SATA data cable but is larger and comes from the computer's power supply. Then plug it into the hard drive.

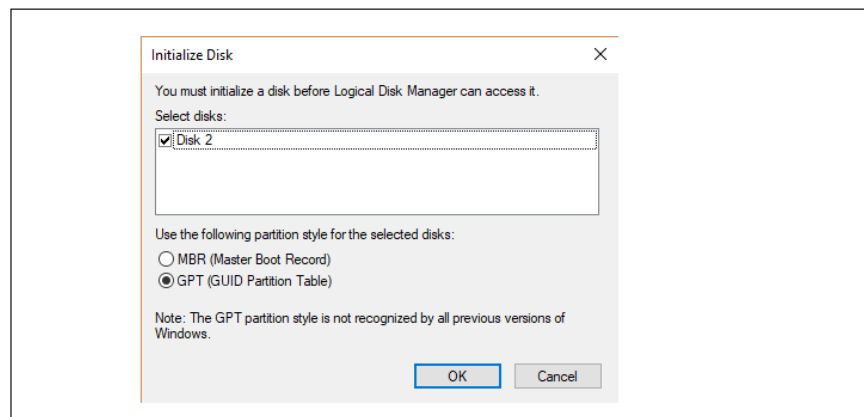
#### **Step 5: Install the hard drive and screw it into place**

First, check the computer. If the two hard drives are installed in the same position on the mounting bracket, you should wait a while, then use a screwdriver to loosen the screws of the hard drive to help the newly installed hard drive slide into the correct position inside, and at the same time, installing the cable will become easier. Then, you install the computer case and plug in the power and turn on the computer.

#### **Step 6: Initialize the new hard drive**

For the hard drive to work, you need to reinstall the computer, the steps are:

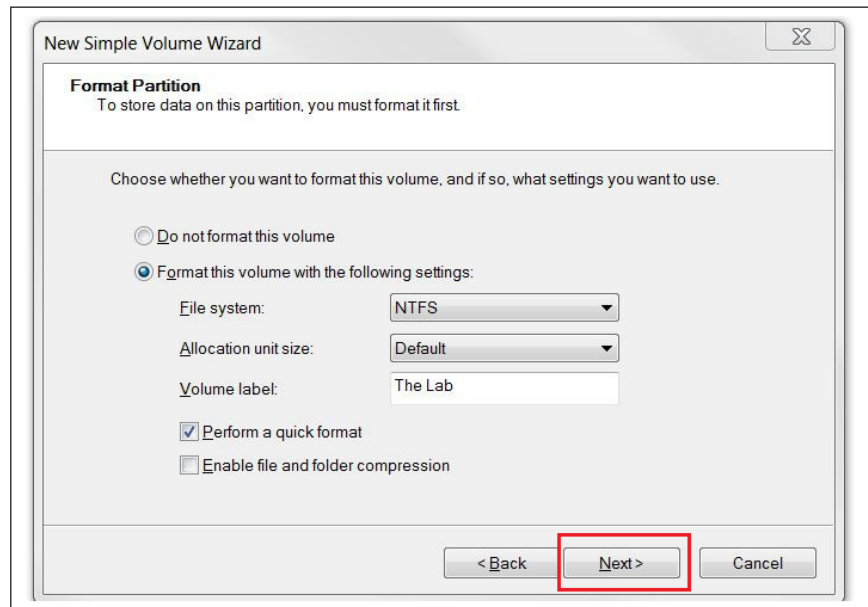
1. **Step 1:** Go to **Start** at the bottom of the screen and select **Computer -> Manage** .
2. **Step 2:** When the **Manage** window appears , select **Disk Management** on the left side of the screen.
3. **Step 3:** The **Initialize Disk** window appears. Then select the **GPT (GUID Partition Table)** line and press the **OK** button.



#### **Step 7: Partition the hard drive**

To partition your hard drive, you need to follow these steps:

1. **Step 1: Go back to the Computer Management window** and right-click on the location of the new hard drive, then select **New Simple Volume** .
2. Step 2: Then select File System as **NTFS** and click **Next** .



You finished reading the article "**Instructions on how to install HDD hard drive for PC for beginners**" edited by the [TipsMake](#) team. We hope this article has provided you with many useful tech tips and tricks. You can search for similar articles on tips and guides. Thank you for reading and for following us regularly.