

Instructions on how to fix blue screen errors on Windows 10

Blue screen error on Windows 10 is a very common error and very difficult to fix, caused by the operating system problem. The way to fix the screen error is to reinstall the operating system, but it is complicated and takes a lot of time.

Here I will guide you how to fix this error on a laptop running Window 10.

Where can still boot to Windows or Desktop.

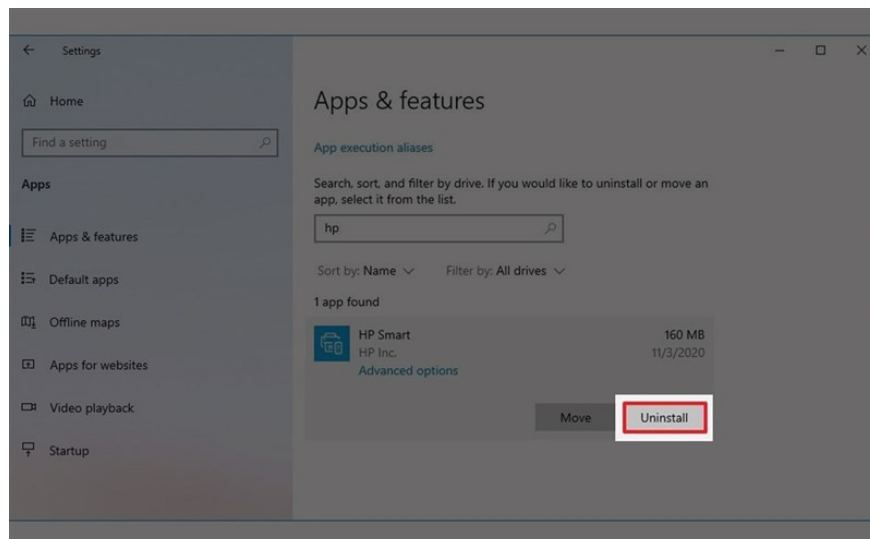
1. Error when updating Windows 10

While updating Windows 10, suddenly the blue screen can be caused by many reasons. It could be caused by a faulty software or application, or it could be caused by a corrupted file or driver. Normally, when the blue screen is being updated, Windows will revert to the same way before updating. All you need to do is find out which application or software is faulty and remove it.

2. Remove incompatible or defective apps

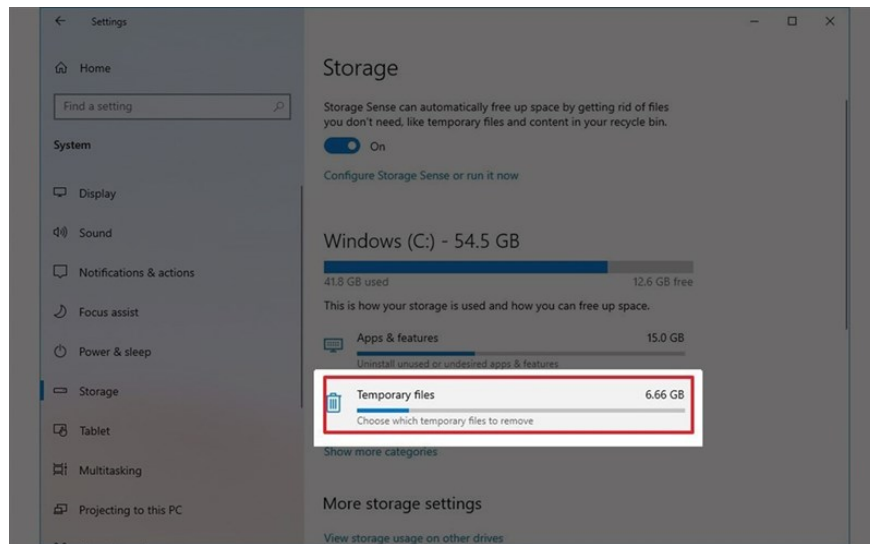
Open Setting => Apps => Apps & Features => select the problematic app and click Uninstall.

Note: after you remove the application that could cause a conflict, you can update it again to check if it is all gone.



3. How to delete and download the installation files

Open Setting => System => Storage => Temporary => in the Temporary file section , select T emporary Windows Installation files => then click Remove files .

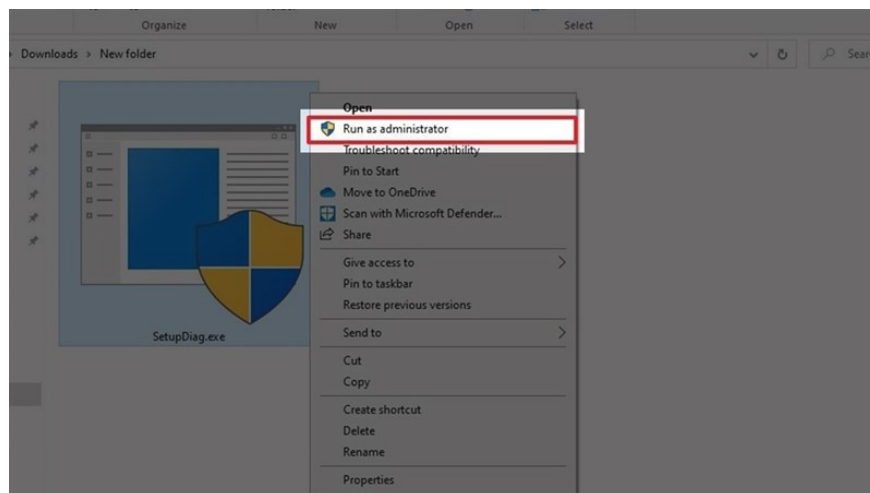


4. Use Setup Diag to analyze errors.

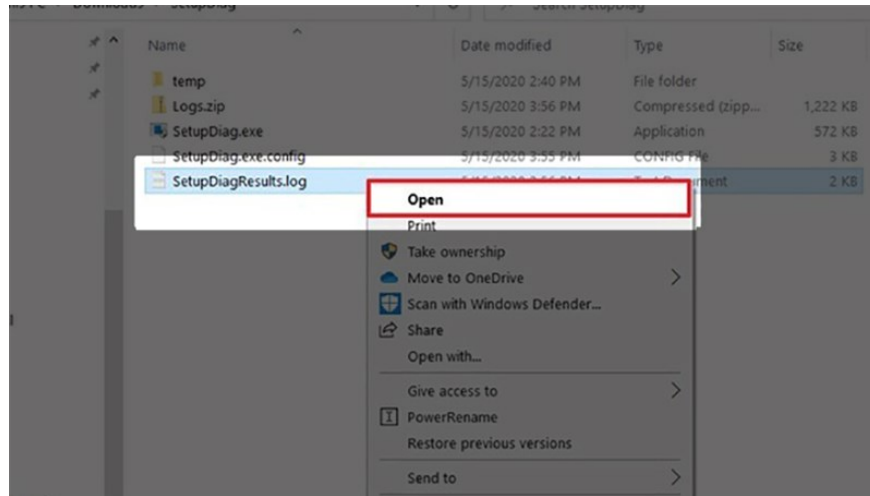
SetupDiag is a tool that Microsoft offers as a download option to diagnose and determine why an update or update cannot be installed. To download Setup Diag , just do the following:

Step 1: Access the Setup Diag tool download page [here](#) .

Step 2: Download and install the toolkit. Note: choose Run as Adminnistrator.



Step 3: Right-click the SetupDiagResults.log file and select Open.



After opening the file, the default text editor will automatically open the log file with error diagnosis based on rules set by Microsoft. And once the error is identified, the log will detail the information to identify why the device green screen during the update and if it's a known issue, you'll also get step-by-step instructions. to solve that error.

5. Disconnect unnecessary peripherals.

Sometimes system problems can also occur due to hardware related fault. So you can temporarily disconnect hardware devices when updating, such as mouse or keyboard or headphones, removable monitors, bluetooth speakers, .

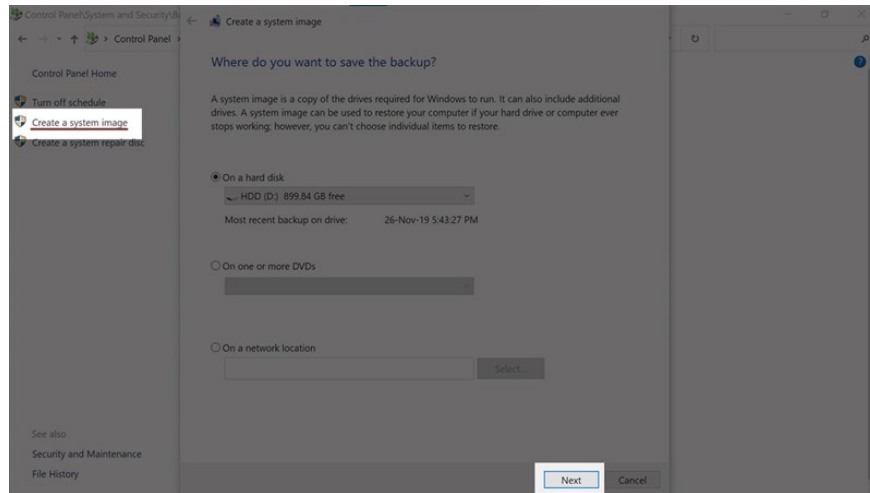
Note: After the installation and update is successful, try to connect the devices again later, if that still fails, try to install the driver again.

Where can not boot into Windows or desktop

1. Use System Image Backup

System Image Backup is a tool that allows you to create an image file. Windows will 'take a snapshot' of your entire computer without leaving anything, from configuration to files, apps and if you have problems that need to be restored, just restore the System Image file and everything is back. old.

Note: the backup capacity will be very large, so you will need a large capacity hard drive to back up.



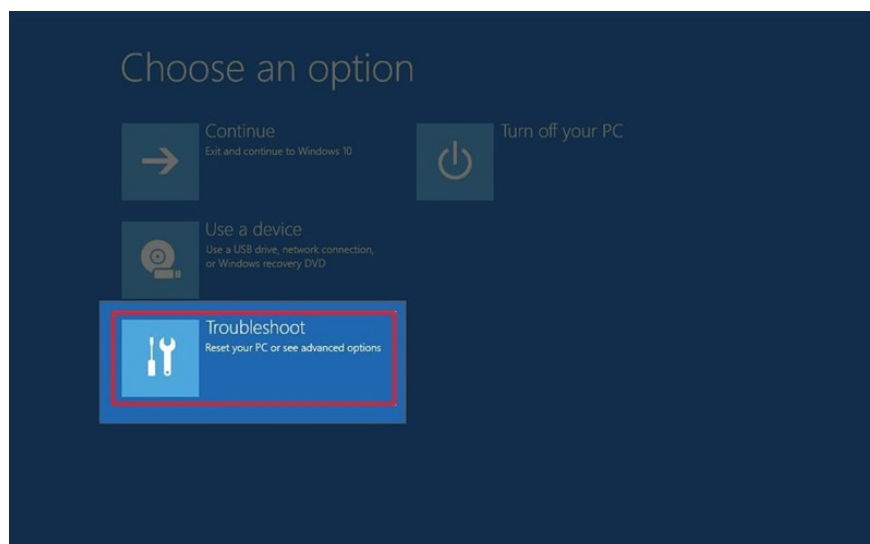
2. Use the Safe mode feature

Safe Mode is a lifesaver feature for you when you cannot boot into Windows. To access Safe Mode, simply do the following:

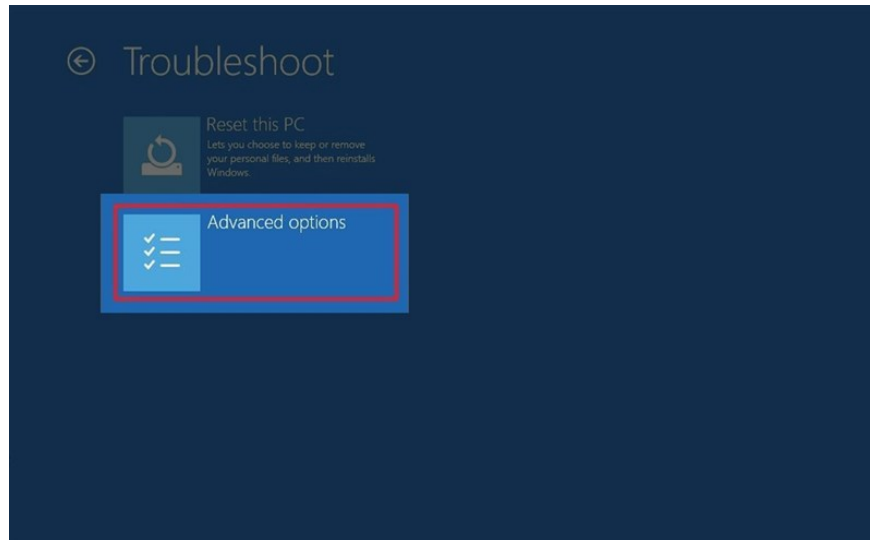
Step 1: Start the computer

Step 2 : When the Windows logo appears, hold down the power button to prevent the machine from booting into Windows. Repeat the above 2 steps 2 times.

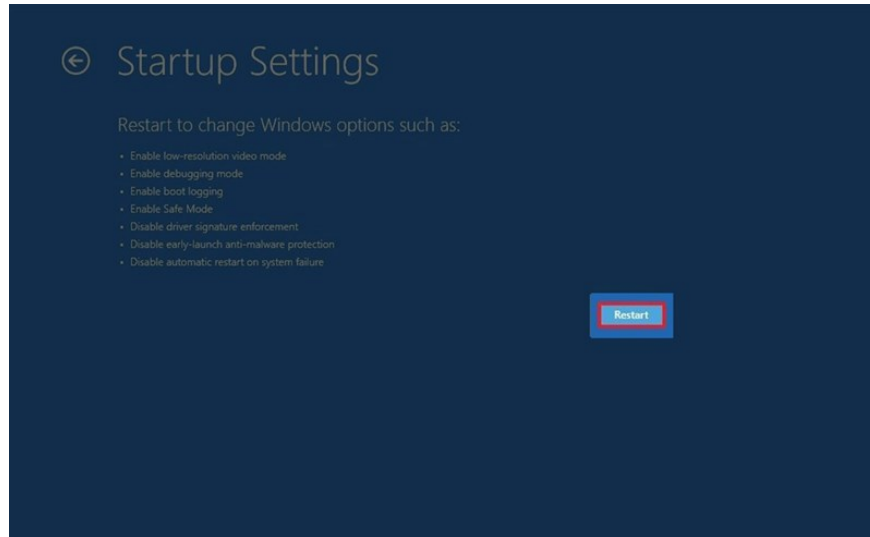
Step 3: The third time, the machine will open the Advanced Startup program , choose Troubleshoot.



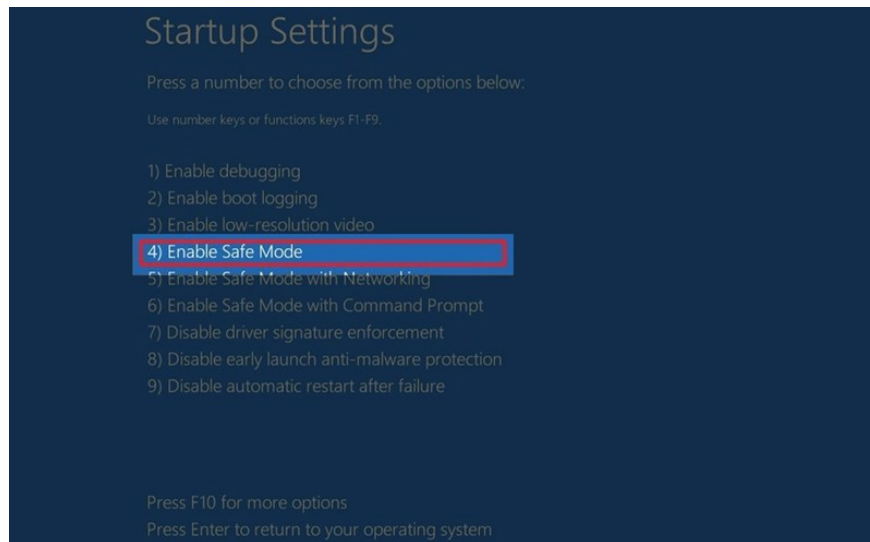
Step 4: Continue to select Advanced Options.



Step 5: Select Startup Settings -> Restart.



Step 6: After the machine reboots, select key number 4 (or key F4) to activate Safe Mode.

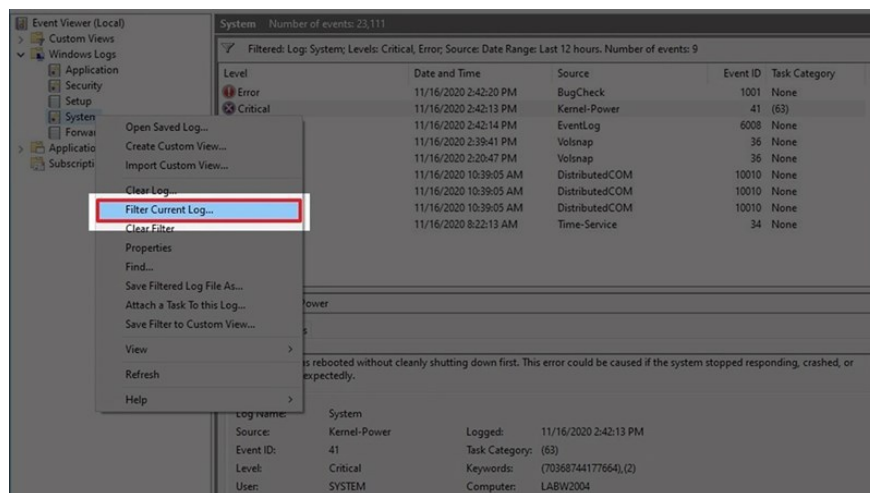


Once you have entered Safe Mode, you can rely on the error you encountered to be able to handle it, if the error is in the Windows update, delete the update, the driver error, delete the driver. Or, on the green screen without error code, you can use the Event Viewer feature to check.

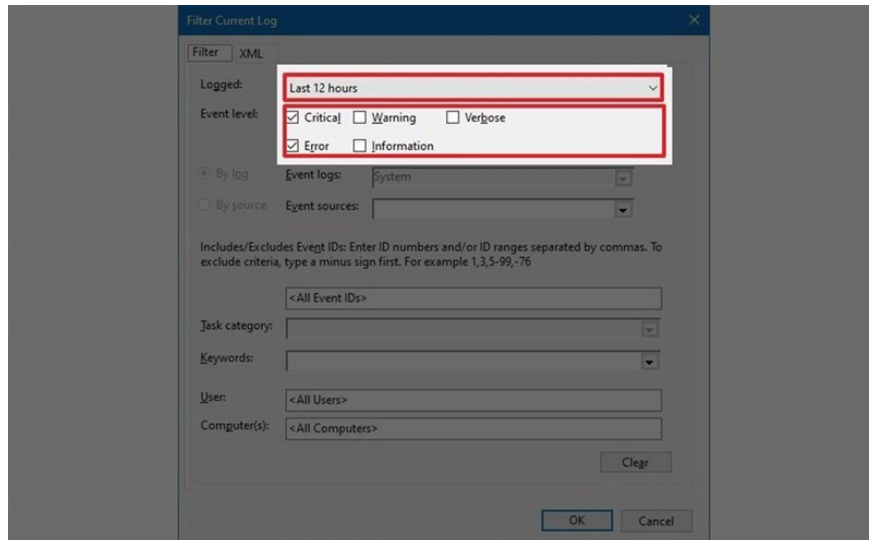
Step 7: Select Start.

Step 8: Search for Event Viewer and open it up.

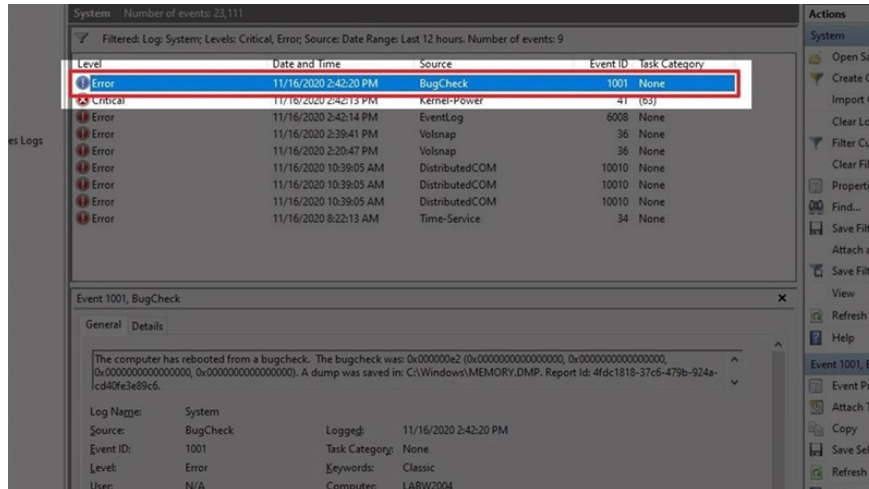
Step 9: Right-click System and select Filter Current Log.



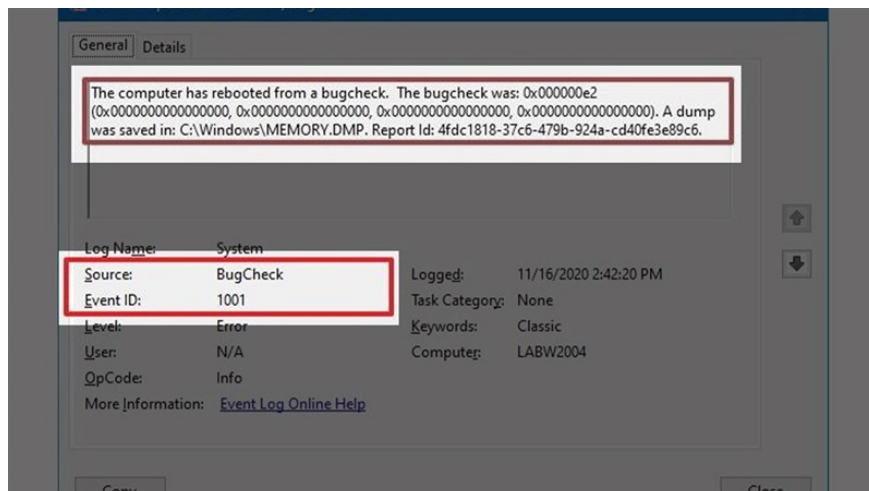
Step 10: On the Filter tab, in the Logged section, choose a time of 12 hours. In the Event Level section, check the box Critical and Error. Then select OK.



Here a list of errors will appear and you check each message to see details.



In the tab General I will show you the details and details of the error causing the blue screen because of this. And you can copy the Source and search on Google to find the right solution.



If you have done all the above but still do not work, the only way to reinstall Windows only. I do not encourage you to reinstall Win but go to reputable stores. Good luck.

You finished reading the article "**Instructions on how to fix blue screen errors on Windows 10**" edited by the [TipsMake](#) team. We hope this article has provided you with many useful tech tips and tricks. You can search for similar articles on tips and guides. Thank you for reading and for following us regularly.
