

Instructions on how to fix blue screen errors on computers running Windows

During a long time using Windows, surely many times you will encounter the case of a blue screen error, also known as a BSOD. This is probably the biggest obsession for Windows users because we feel completely helpless because we do not know how to fix it.

However, **how to fix the blue screen error** is not as difficult as you think and it is also very simple if you really recognize the error and fix it quickly.

1. Cause of the blue screen error

Blue screen errors are not only an obsession for you to use Windows 10 but also appear from Windows 7 and Windows 8. The most unpredictable of this error is that they appear from many different reasons from hardware to software and also from external applications and peripherals. Makes you feel powerless to check and fix errors. Below I will list a few of the main causes of this error.

1. Computer operates heavily for long periods of time resulting in overheating.
2. Hardware failure due to incompatibility.
3. Software error due to a conflict with the system.
4. Error with old drivers no longer working well with Windows.

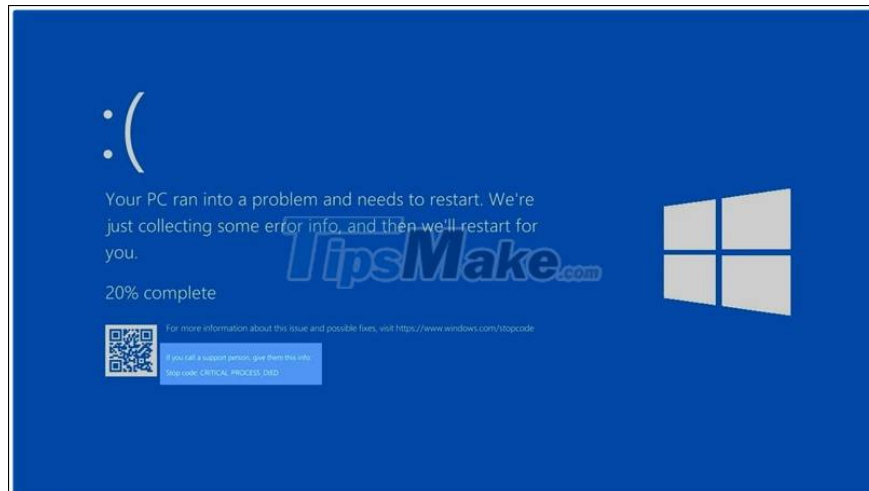
In particular, you should pay more attention to Driver because this is the component that connects the hardware together to be able to control the most easily. And this is also the component that deeply interferes with the Windows system.

In addition, the resulting conflicting application is also rare because Windows has a mechanism to automatically Crash that application if a problem occurs. The exception is only 3rd party antivirus applications.



2. How to identify the blue screen error

Once your computer has encountered this error, a table with green text will appear with the words Your PC ran into a problem and needs to restart. After that, your computer will restart over and over again with the blue board with the words above. To correctly identify the error you need to pay attention to the capital letters in the blue board as shown below. Pay close attention you will be able to check for errors and fix them quickly.



3. How to fix the blue screen error

Blue screen errors are very diverse with many different codes to be able to fix. However, I will not be able to list them all, but only list the most popular types for you to refer to for repairing your computer.

BAD POOL HEADER blue screen error

For me, these are probably the most common blue screens and you will most likely encounter the most often. At the same time it is because this error is caused by many different sources. The most characteristic is the following reasons:

1. There is a problem with the anti-virus software on your computer.
2. Error due to broken Ram or uneven Bus Ram.
3. Error due to Driver has not been updated to the latest version or conflicts with each other.

To be able to fix the problem you follow the following ways:

Check antivirus software:

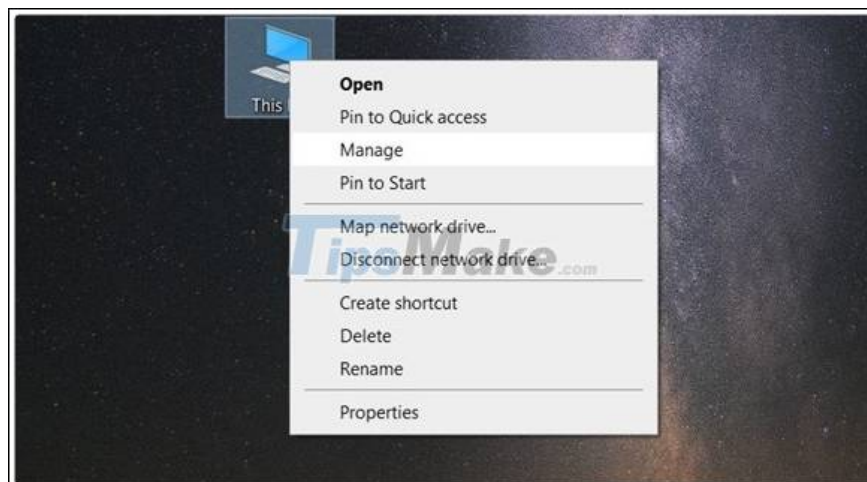
Please remove the antivirus software that is not good on the computer. At the same time, you also do not need to use too many anti-virus software because Windows Defender on your computer can still respond well. If you still want to reinstall, you should use copyrighted software to minimize the use of Crack.



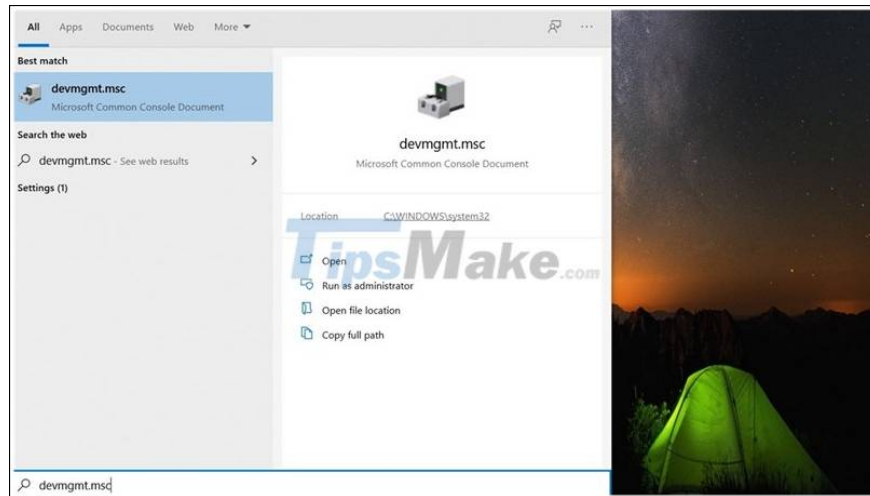
Check the machine's driver for errors

Step 1: There are 2 easiest ways for you to open the Driver installer on your computer and check them.

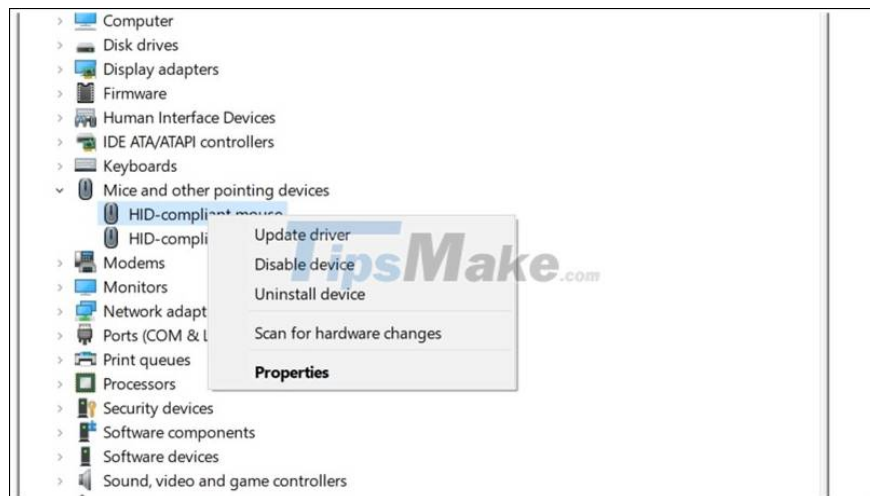
Method 1: Right click on **This PC** and select **Device Manager** to open a window to check all drivers on your computer.



Method 2: Enter the following command in Windows search box **devmgmt.msc** . Select the output application, the Driver **Manager** window is **Device Manager** will appear and you start to check.



Step 2: Check if any Driver shows a yellow exclamation mark, otherwise you try to guess or check each one in turn to find the Driver error. Right-click the Driver you want to check and select **Update Driver Software, Disable, Uninstall** (Update or temporarily disable or delete Driver) to check it.



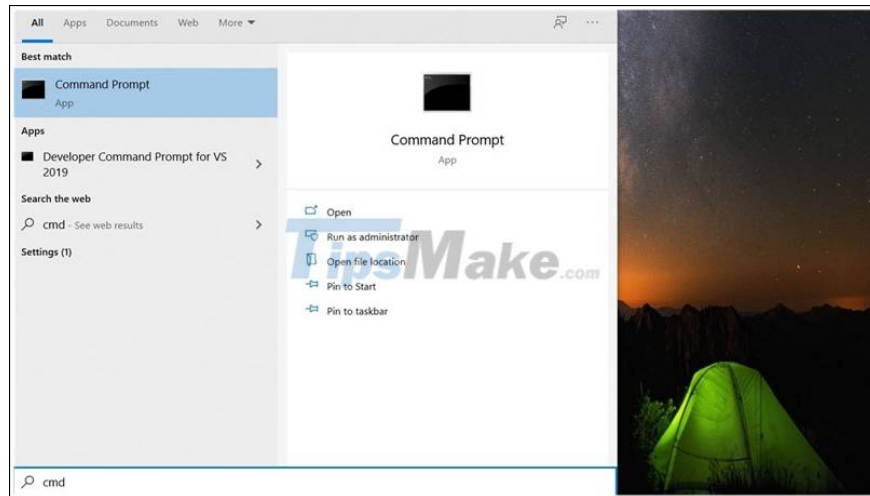
Note:

1. Make sure you have installed the genuine driver from the manufacturer.
2. Sometimes there are Drivers that match your computer's components but still conflicts, try to replace components and try again.

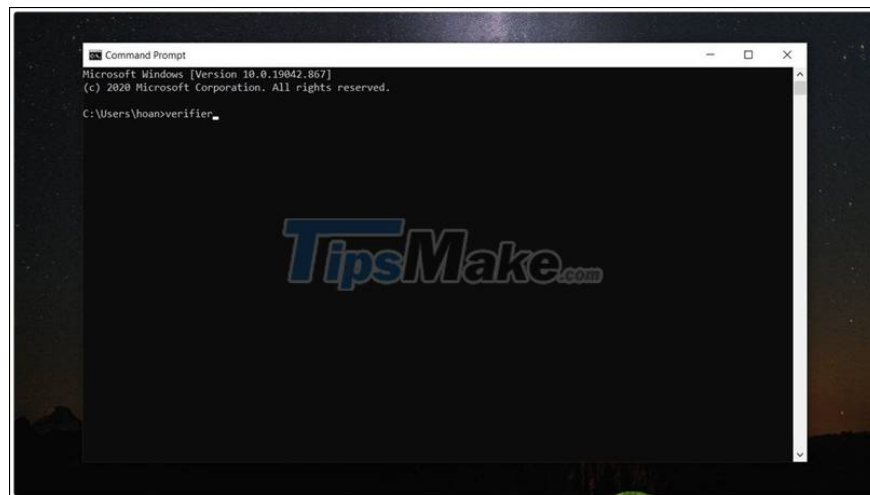
Blue screen error DRIVER POWER STATE FAILURE

This is still an error related to drivers and computer peripherals. Unplug peripherals and restart the machine to see if the error persists. If that still happens, try the Windows Verifier tool to check and fix new drivers.

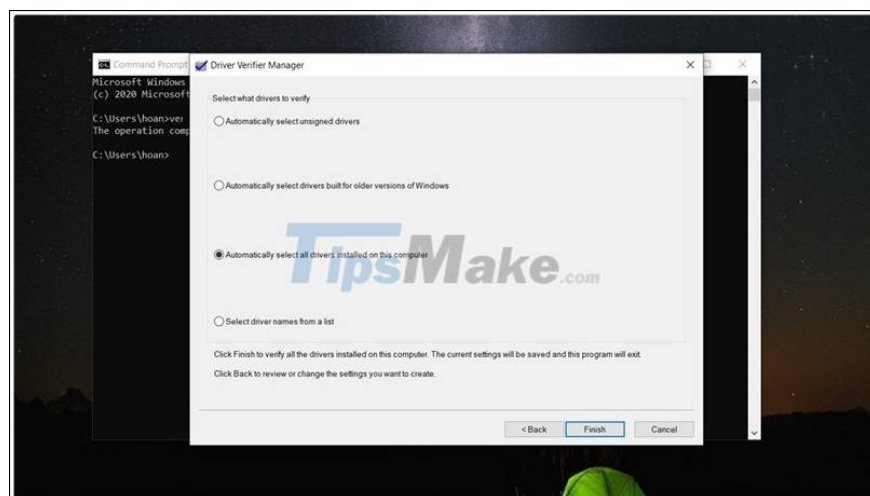
Step 1: Search for **CMD** on the **Windows** search bar **on the Taskbar** , then select **Command Prompt** .



Step 2: Enter the **Verifier** command and select **Enter** .



Step 3: Choose the following order: **Create Standard Settings**> **Next**> **Automatically select all drivers installed on this computer**.



Blue screen error IRQL NOT LESS OR EQUAL

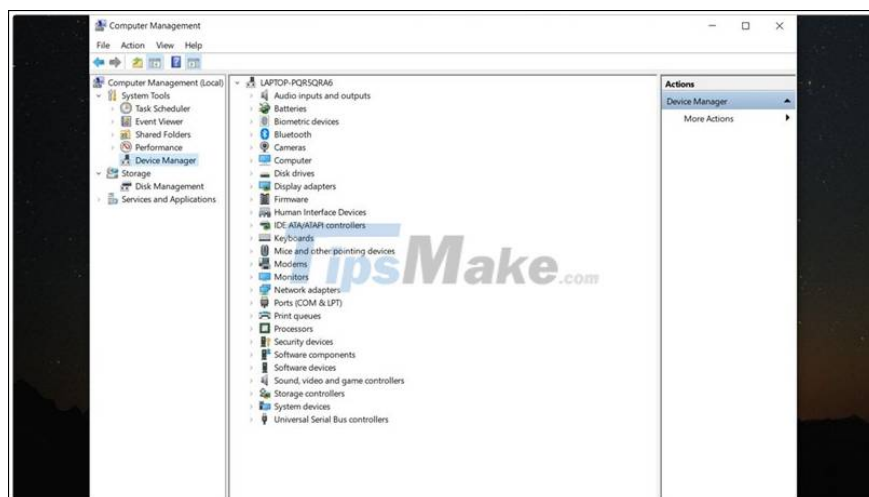
This is a Ram related error where applications or peripherals were trying to use the Ram but was not compatible and was denied the operation resulting in a blue screen error. The main causes of the error are:

1. Windows file system error.
2. Incompatibility of peripheral devices and hardware.
3. Error comes from a conflict of software
4. Error due to Driver has not been updated to the latest version or conflicts with each other.

Here, I have a few ways to fix the above error for you:

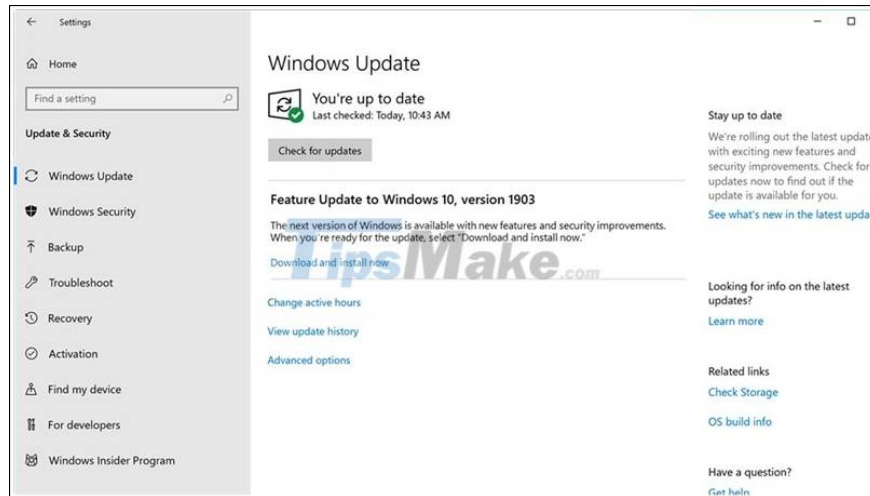
1. Check the system driver

How to check Windows system driver is the same as with the first error I instructed. You do as part 1 and check each Driver to see which Driver is the cause of the computer conflict.



2. Check Windows Update

Regularly check for updated versions of your operating system on Windows 10. With updates there are versions that will give you the best experience. But there are also versions that do not bring the above good. Because Windows will regularly add patches to the operating system, you should regularly check for updates.



In addition, there are still many other errors that you can still fix with ways like:

1. Virus Removal is intensive with copyrighted software because many of these errors appear due to Viruses.
2. Using hard drive defragmentation available on Windows can both help fix blue screen errors and corrupt your hard drive.
3. Delete unnecessary applications on Windows in case they cause conflicts.
4. If you use peripheral devices, you need to use specialized drivers from the manufacturers.

So I have brought a way to solve errors with the blue screen for you to simply use your computer. Thank you very much for viewing the article. Good luck.

You finished reading the article "**Instructions on how to fix blue screen errors on computers running Windows**" edited by the [TipsMake](#) team. We hope this article has provided you with many useful tech tips and tricks. You can search for similar articles on tips and guides. Thank you for reading and for following us regularly.