

Instructions on how to find serial numbers of Windows computers

Just like the IMEI number on mobile devices, serial numbers are important information for each computer. When you need to install the Driver or provide the necessary information to the support staff when using the warranty service, the user needs to provide the serial number of the machine.

The serial number is a unique code to identify your computer device, in order to prevent buying fake, counterfeit or used products in case the user wants to find out information from the manufacturer through this serial number. Each laptop will have a separate serial number. In case you need to install a driver or provide warranty service information, you will need this serial number. However, some people do not know how to search serial numbers on laptops, please follow the article below.

Note to users, how to check the serial number below can be suitable for different laptop models.

1. Serial number on the camera body, machine case:

For some laptops, we can easily check the serial number right on the camera body, when printed on a small sticker on the bottom of the device. Some other laptops, this information is printed directly on the device's cover. In case the device battery is removable, the serial number may be printed on a small sticker inside the battery compartment, below the battery pack.



For desktop models, we need to find the position on the back, top, or two sides of the case. However, we need to open the case because the serial number listed in the label is inside the case

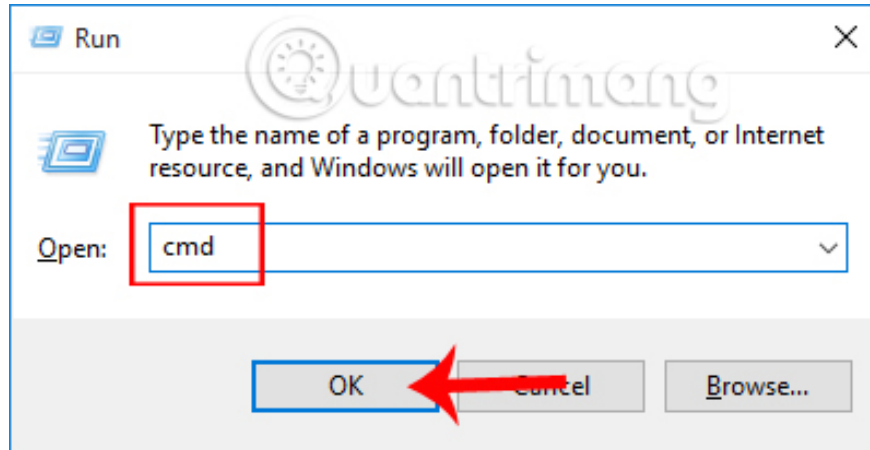
If you still have the original box with the device, try to find the label because you can write the serial number on it.

2. Check the serial number via the CMD command line:

If the labeling case has been blurred and cannot see the serial number, there is a very simple way that is to use the CMD command line.

Step 1:

First of all, we open **the Run dialog box** and then enter the **cmd** keyword and click **OK** to access.



Step 2:

At the Command Prompt window interface, please type the command below and click **OK** to access.

```
wmic bios get serialnumber
```

Soon, we will see the line of computer serial numbers below the **SerialNumber** line. This serial number includes both letters and numbers. In addition, we can also type the command line below to **check the name of the laptop** being used.

```
wmic csproduct get name
```

This command line uses the Windows Management Instrumentation Command-line tool (WMIC) to get the computer's serial number from the BIOS on the device.

```
Select C:\Windows\system32\cmd.exe
Microsoft Windows [Version 10.0.10240]
(c) 2015 Microsoft Corporation. All rights reserved.

C:\Users\User>wmic bios get serialnumber
SerialNumber
N

C:\Users\User>wmic csproduct get name
Name
Aspire F5-571

C:\Users\User>
```

Note to users , when we check through the cmd command there will be a case where the serial number of the computer will not appear. This is the manufacturer's design, so when you enter the command, the result may be zero or the message line Be filled by OEM as shown below.

With some self-assembled desktop computers because the computer without the serial number will appear in this case.

```
Command Prompt
Microsoft Windows [Version 10.0.15031]
(c) 2017 Microsoft Corporation. All rights reserved.

C:\Users\chris>wmic bios get serialnumber
SerialNumber
0
```

3. Check the serial number via BIOS:

In case when the user enters the command on cmd without giving it, it is possible to find the serial number in the BIOS or UEFI firmware installation screen.

Depending on the computer line, accessing the BIOS will be different. Maybe press ESC, F2, F8 or F12. Read more about the tutorial on BIOS on different computers to know how to access the BIOS the computer is using.

After that, we will find the **Serial Number** in the system information in the Main or System screen.

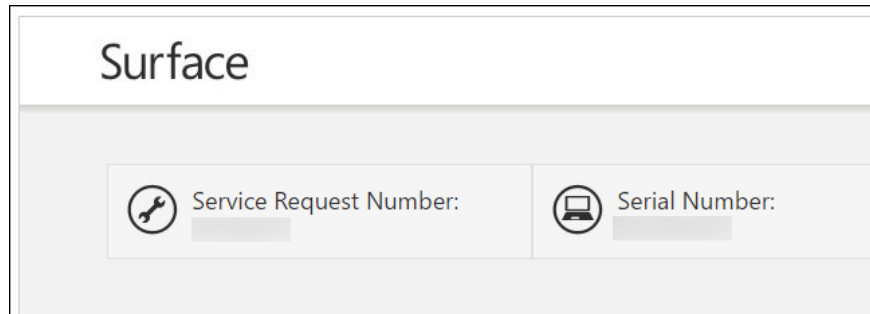
```
Aptio Setup Utility - Copyright (C) 2016 American Megatrends, Inc.
Main Security System Configuration Exit

System Time [16:44:46]
System Date [02/17/2017]
Notebook Model HP Spectre x360 Convertible
Product Number V8T99UA#ABA
System Board ID 81A1
Born on Date 12/06/2016
Processor Type Intel(R) Core(TM) i7-6500U CPU @ 2.50GHz
Total Memory 16 GB
BIOS Version F.43
BIOS Vendor American Megatrends
Serial Number
```

4. Check the serial number via warranty service:

If the user has registered the computer with the manufacturer, or uses some warranty service, the serial number may be included in the warranty service invoice, service confirmation email or invoice registration document.

In the case of buying a computer online or in a store, the serial number may be printed on the invoice or email paper that we receive from the dealer.



Here are some ways we can find the serial number of a Windows computer. The simple way is through the number of stickers printed on the camera body or the case. Or another way is through the computer's cmd command.

Refer to the following articles:

1. Summary of the common Run CMD commands
1. 2 How to change the name displayed on the computer
1. Tutorial 4 simple steps to upgrade Windows XP to Windows 7

You finished reading the article "**Instructions on how to find serial numbers of Windows computers**" edited by the [TipsMake](#) team. We hope this article has provided you with many useful tech tips and tricks. You can search for similar articles on tips and guides. Thank you for reading and for following us regularly.