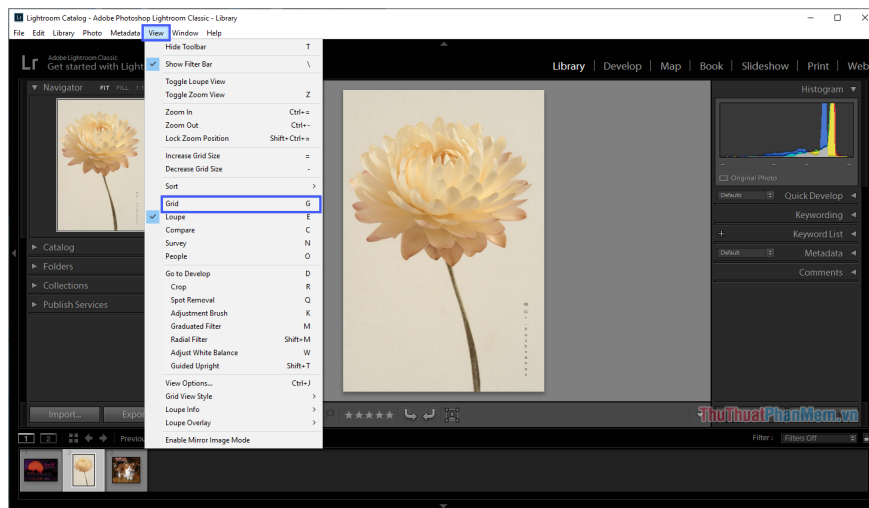


Instructions on how to export photos in Lightroom

Lightroom is currently the most popular color and image editing software in the world. With Lightroom we have many different color correction and calibration features that are individually optimized for each device input.

Step 1: To export images in Lightroom, force you to switch to grid view (Grid).

You select **View** and select **Grid** or press **G** to switch to grid view.

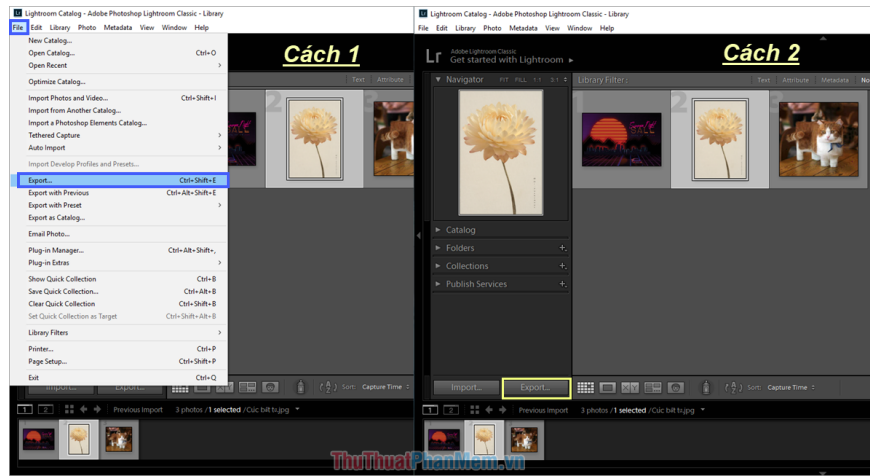


Step 2: When returning to the grid view, we will have 02 ways to export the image as follows:

Method 1: Select **File -> Export . (Ctrl + Shift + E) .**

Method 2: Click **Export .** right on the **Navigator** window.

*(To export multiple images at once, hold **Ctrl** and select the images you want to export on the **Library Filter** and then proceed to **Export**) .*



Step 3: The **Export One File** window (if you export only 1 image) or **Export . File** (if you export a lot of images) will appear and we start the following settings:

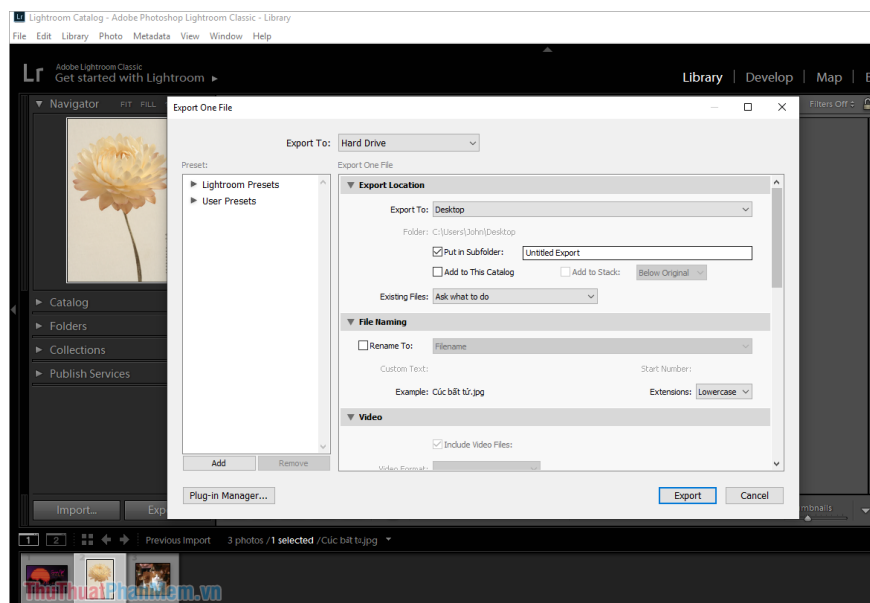
1. **Export To:** Where to store files, usually we will store on the hard drive of the computer should choose **Hard Drive**

Next, we have an **Export Location** to adjust the details of where the photos are stored when exporting.

1. **Export To:** Where to store photos (you can only choose the storage location because when exporting Lightroom photos will automatically create a new folder for storage)
2. **Put in Subfolder:** Export image in new folder / name folder when exporting image
3. **Add to this Catalog:** Add to an existing Catalog, if you add to the Catalog select both Add to Stack to select Catalog from the list
4. **Existing Files:** After exporting the image, Lightroom will automatically close the file (by default).

After that, we will have **File Naming** so that you can name the image file when exporting

1. **Rename To:** Rename the image file (if not changed, will save the original file name)



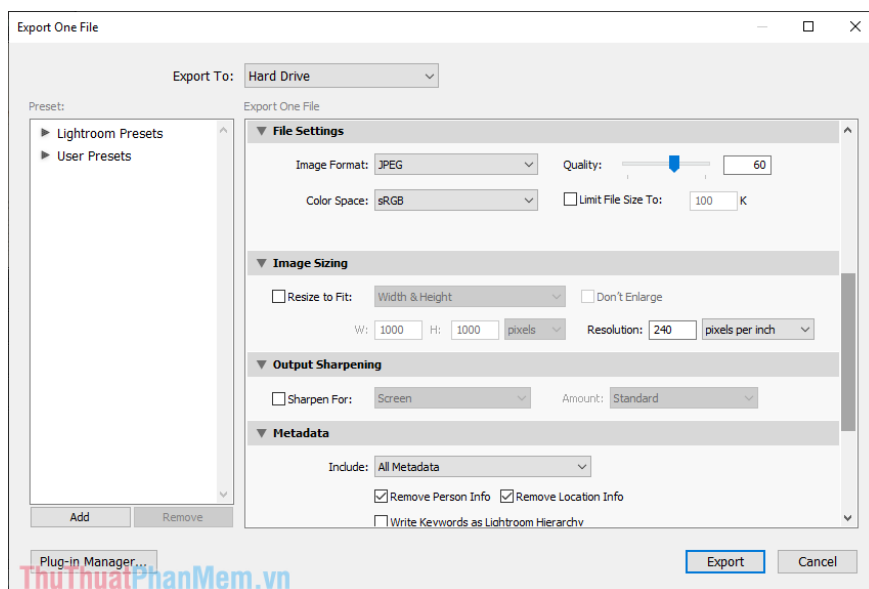
Continue, we will have **Video** but in this article export the image so we will skip and go to **File Settings** .

1. **Image Format:** Image format
2. **Color Space:** Color system
3. **Quality:** The image quality when exported
4. **Limit file size to:** Limit the file size when exporting

Next, we will have Image Sizing that allows you to adjust the size, pixel density, etc.

1. **Resize to Fit:** Resize the image when exporting
2. **Resolution:** The pixel density of the image when exporting

After that, we have **Output Sharpening** and **Metadata** as auxiliary parts, so you do not need to care about them, leaving them at the default setting is okay.



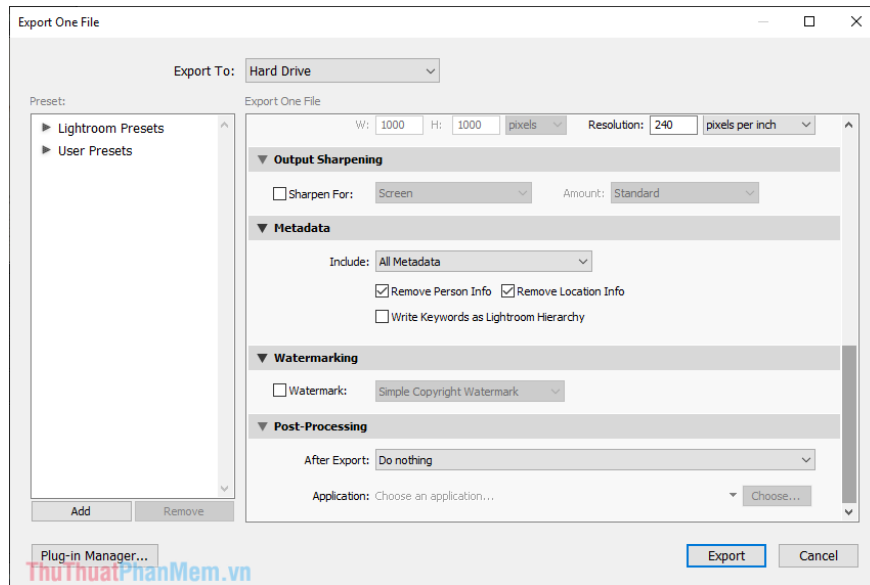
When scrolling down, you will have a **Watermark** tag to let you mark the copyright on the image.

1. **Watermark:** Stamp copyright

Finally, the **Post-Processing** card (background processing) for you to continue editing with another software.

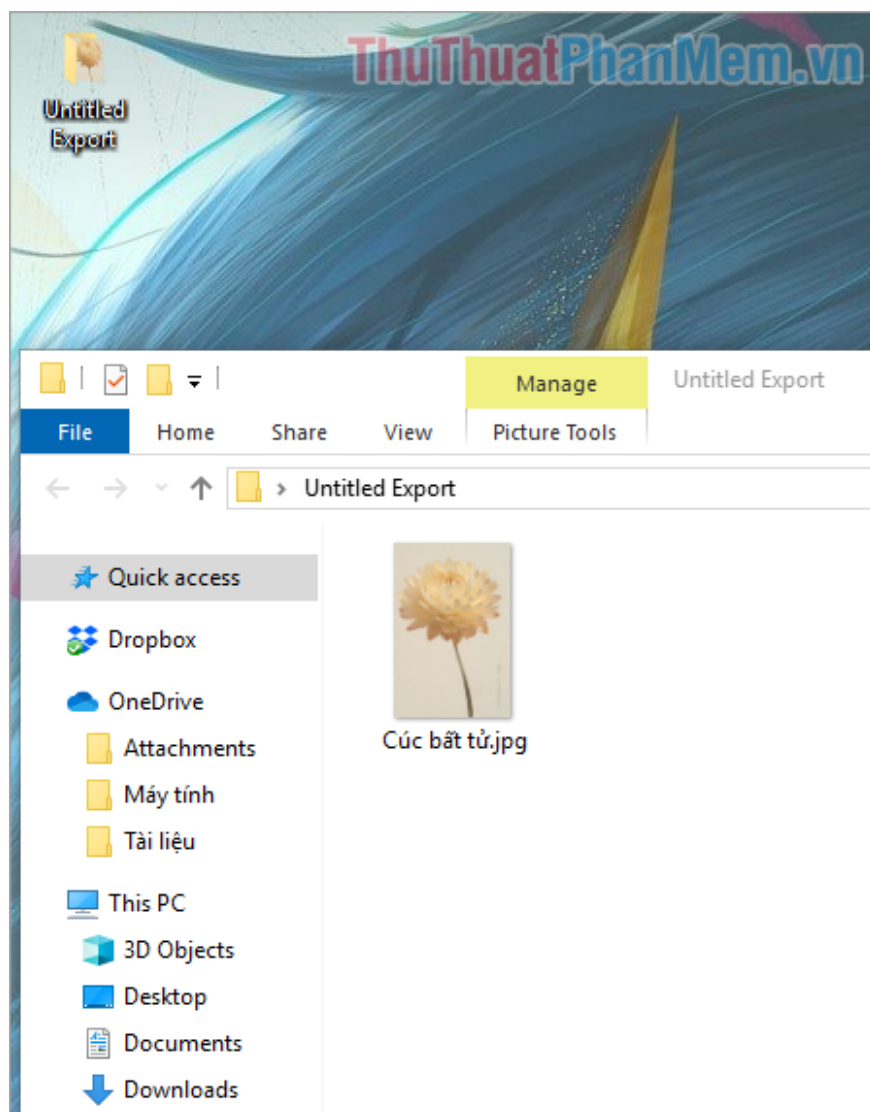
1. **After Export:** Export images directly into the software
2. **Application:** The software continues to edit images after exporting

Post-Processing, you can easily understand that background processing continues for images with another software.



***For example,** Lightroom is only responsible for color grading and image editing in Photoshop so you will choose Post-Processing. When you click Export, Lightroom will export that image directly into Photoshop software for you to work (saving time to launch Photoshop, open image files, .).*

After you finish setting up all the information, simply click **Export** to export the image. Lightroom will create a new **Folder** according to the name you name and the image will be in it.



Good luck!

You finished reading the article "**Instructions on how to export photos in Lightroom**" edited by the [TipsMake](#) team. We hope this article has provided you with many useful tech tips and tricks. You can search for similar articles on tips and guides. Thank you for reading and for following us regularly.