

Instructions on how to download and install the latest ETABS

ETABS is used for modeling and analyzing building structures. With its powerful processing capabilities, ETABS assists civil engineers in designing high-rise buildings, bridges, and steel structures. If you are looking for how to download and install ETABS, this article will provide detailed step-by-step instructions.

Below, Free Download will share how to download and install the latest version of ETABS for structural engineers. This will help you easily install and use the structural simulation software.

Instructions for downloading and installing ETABS

Recommended Configuration:

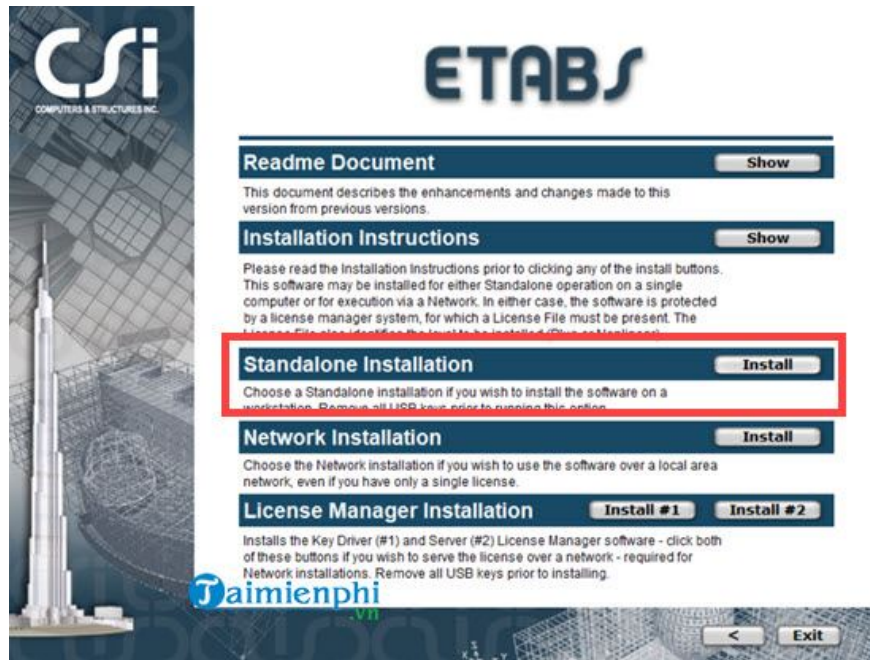
- Processor - CPU: Intel 2 Duo 2.5 GHz or higher (higher is better)
- RAM: 4 GB / 8 GB
- Operating System: 64-Bit Windows 7, Windows 8.1, Windows 10
- Graphics Card - VGA: Intel HD 5000 (if dedicated, Quatro series is recommended)
- Free Storage: 10 GB
- DirectX: Version 11

Key features:

- Specialized software for calculating and designing high-rise buildings
- Fully integrates all aspects of the engineering design process
- Provides a complete set of tools for structural engineers
- Intuitive interface, very easy to use

Download ETABS to your computer here.

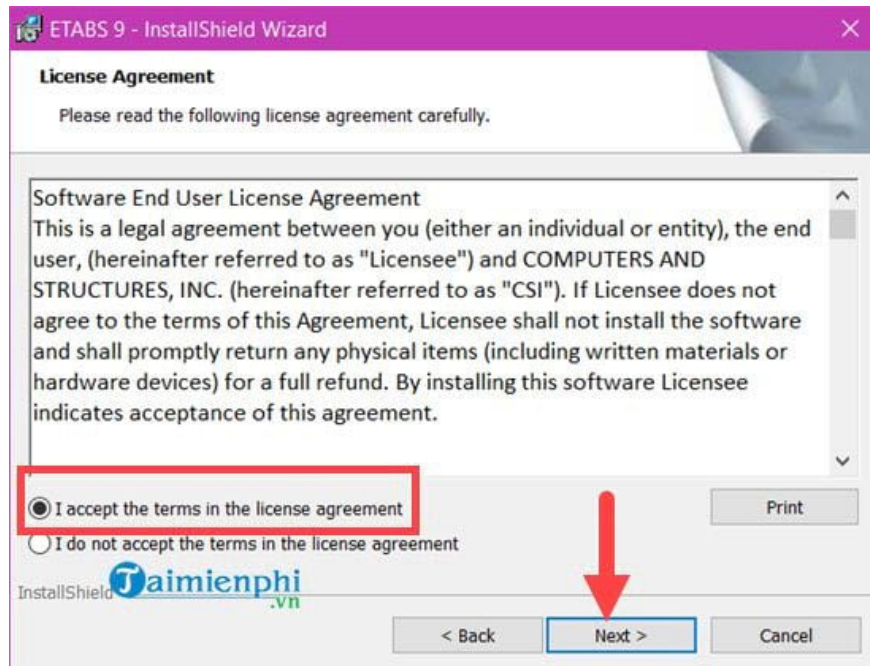
Step 1: After opening the software, select **Standalone Installation** .



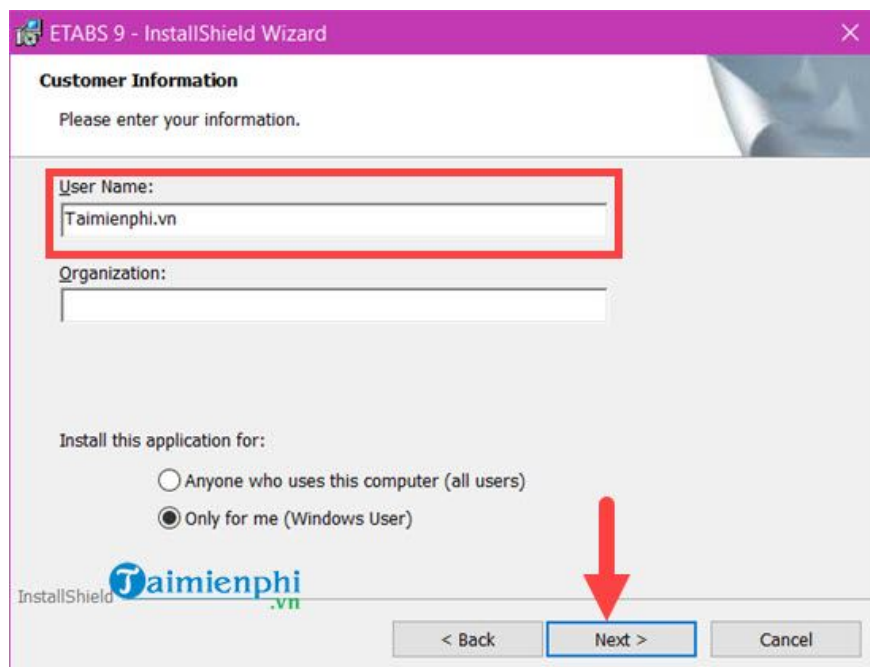
Step 2: Press **Next** to skip.



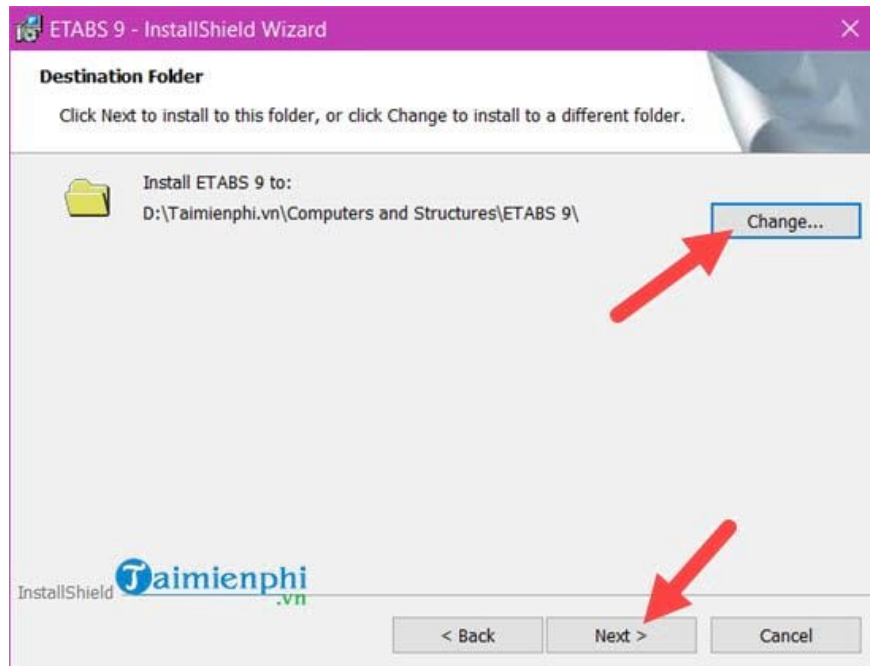
Step 3: Next, select **"I accept the terms in the license agreement"** to complete the process, then click "Next".



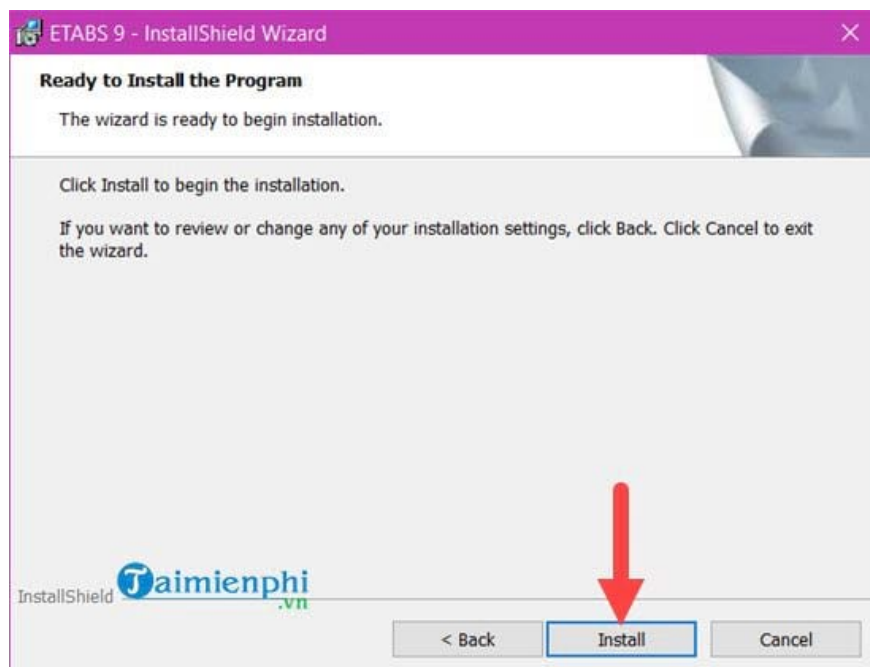
Step 4: Enter your username or enter **TipsMake** ; below, select "Only for me".



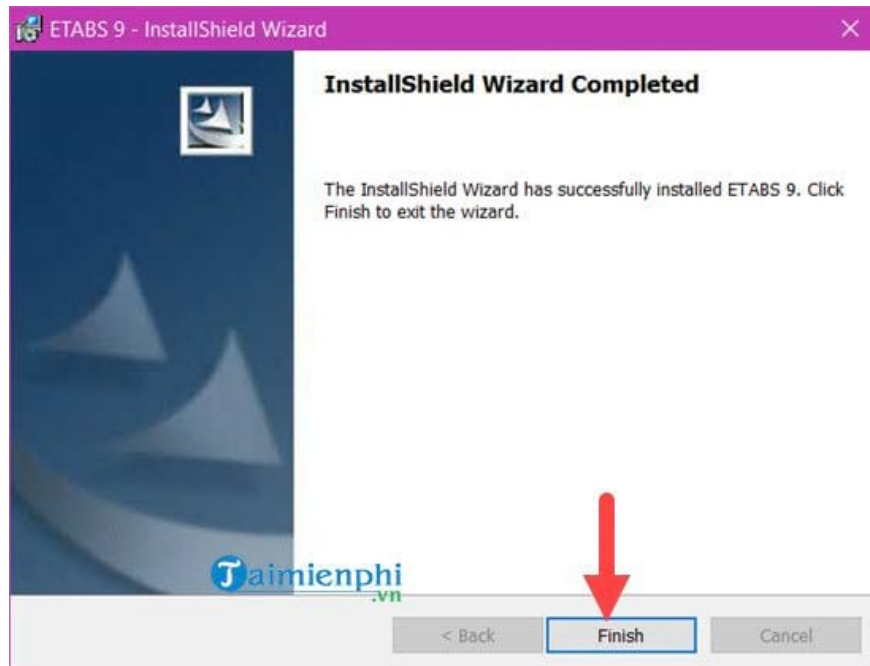
Step 5: Next, **choose the installation path** , deciding where you want to save the software.



Step 6: Finally, click on the **Install** button .



Step 7: Wait for the installation process to complete, then click **Finish** to end this step.



Properly downloading and installing ETABS ensures the structural simulation software runs smoothly and effectively supports construction design. If you encounter errors during installation, you can check your computer's configuration or update system libraries to ensure the software runs smoothly.

You finished reading the article "**Instructions on how to download and install the latest ETABS**" edited by the [TipsMake](#) team. We hope this article has provided you with many useful tech tips and tricks. You can search for similar articles on tips and guides. Thank you for reading and for following us regularly.