

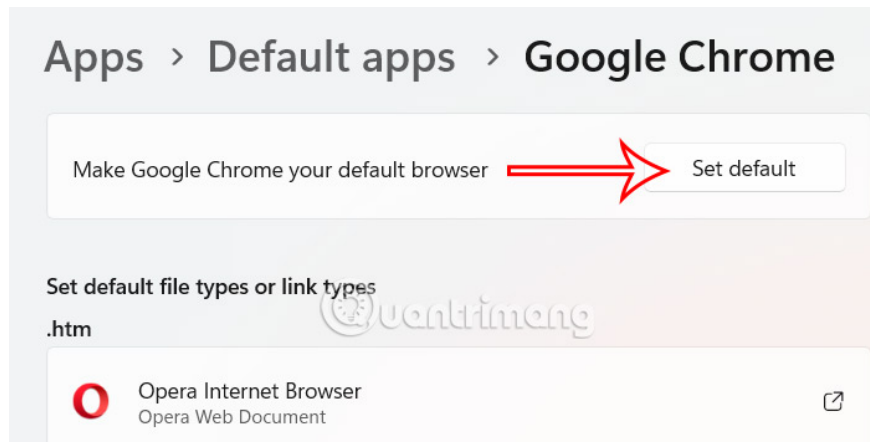
# Instructions on how to disable Microsoft Edge on Windows

By default, you cannot uninstall the Microsoft Edge browser on Windows 11, but you can completely disable the browser when you don't need to use it.

There are several different ways to disable Microsoft Edge on your computer. Below is a guide on how to disable Microsoft Edge on Windows.

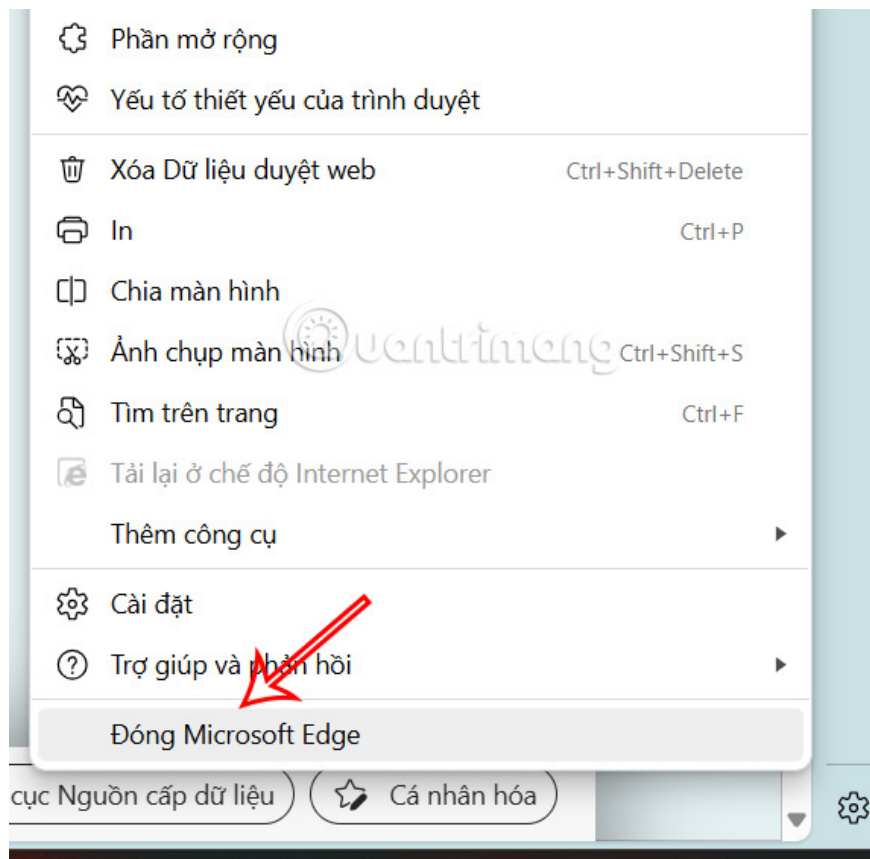
## Change the default browser on Windows.

If Microsoft Edge is your default browser and you simply want to change it to a different one, it's very easy.



## Close the Microsoft Edge browser completely.

Please double-check that you have completely closed the Microsoft Edge browser. Click **the three-dot icon** and select **Close Microsoft Edge** .

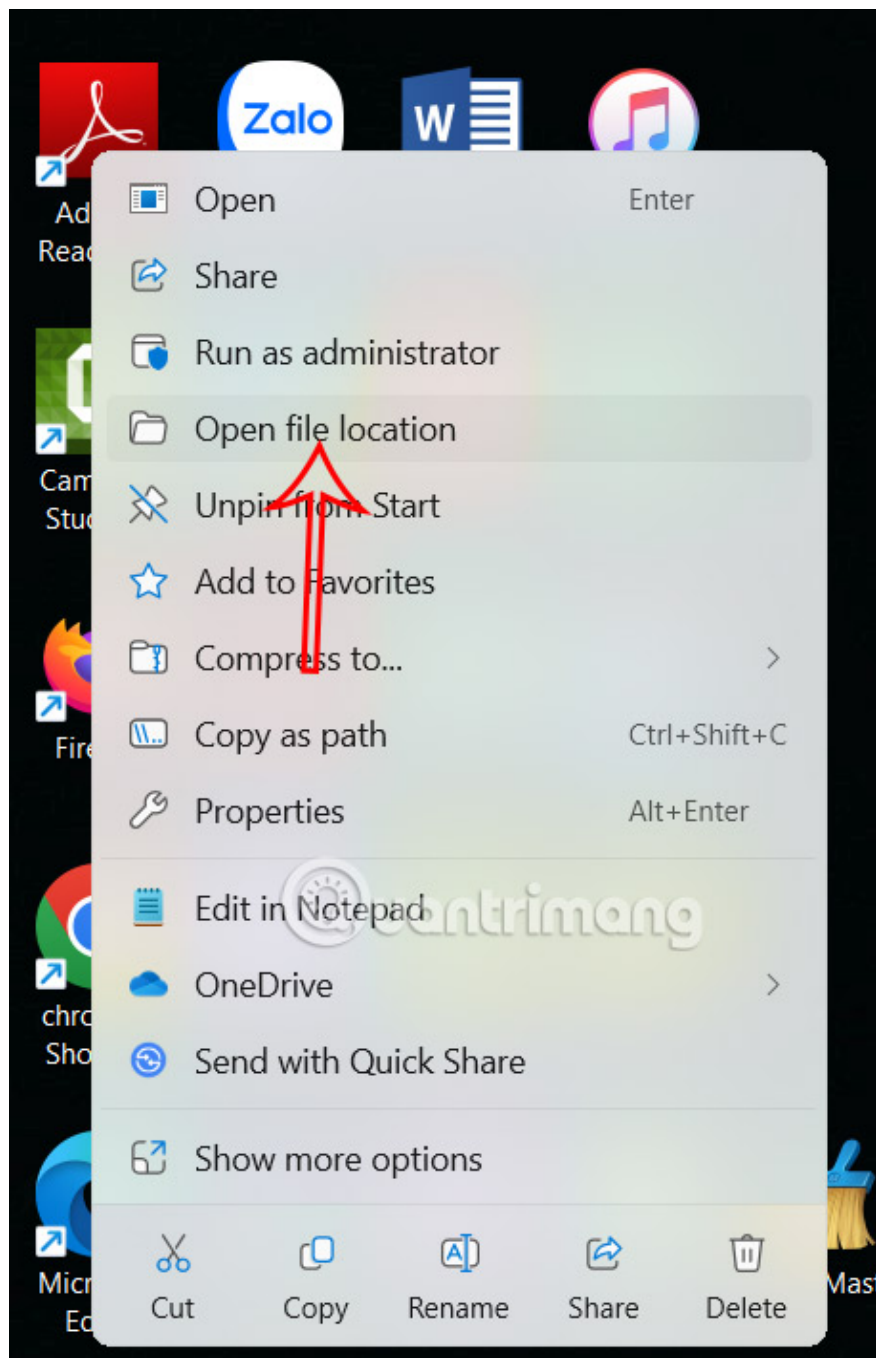


## Hide Windows Edge browser

Although you can't uninstall Windows Edge, you can disable access by renaming the browser's system files.

### Step 1:

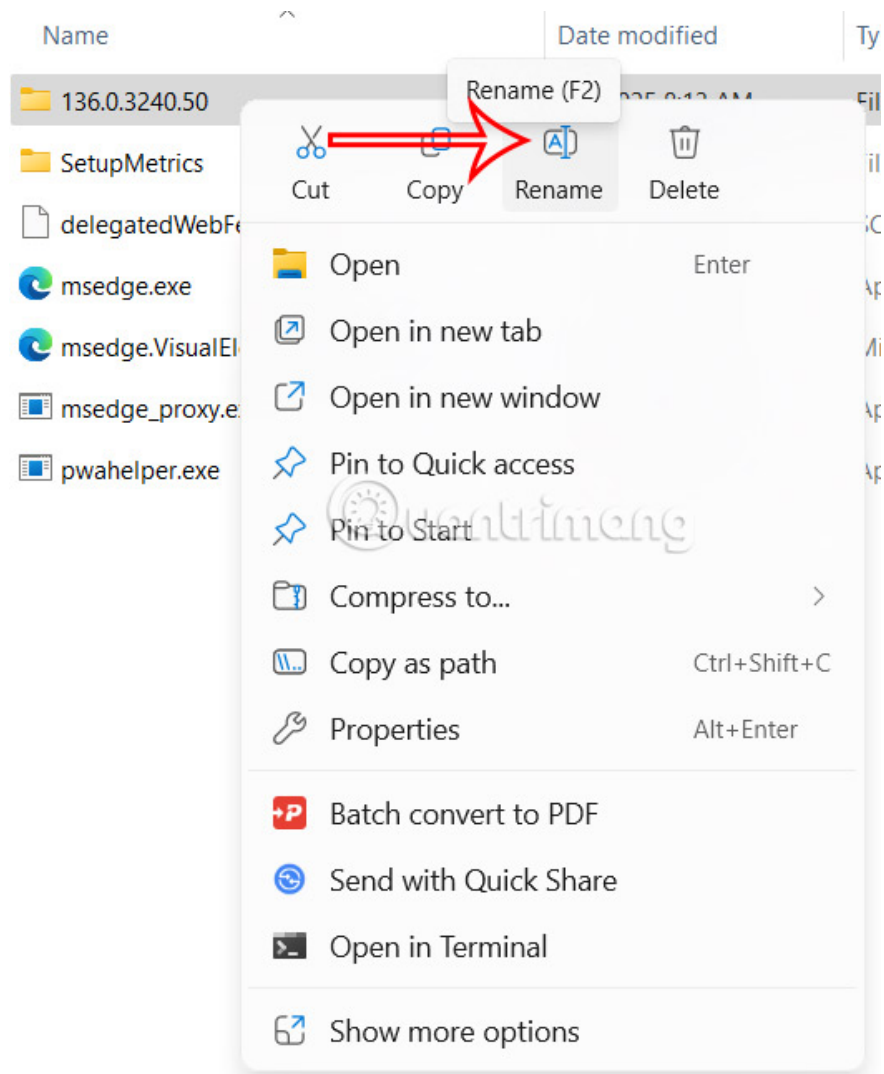
Right- click **the Microsoft Edge shortcut** and select **Open file location** .



## Step 2:

Display the Edge browser's application files interface. **Rename the version folder at the top** and **confirm with administrator privileges** . Finally, when you start the browser, you will receive an error message.

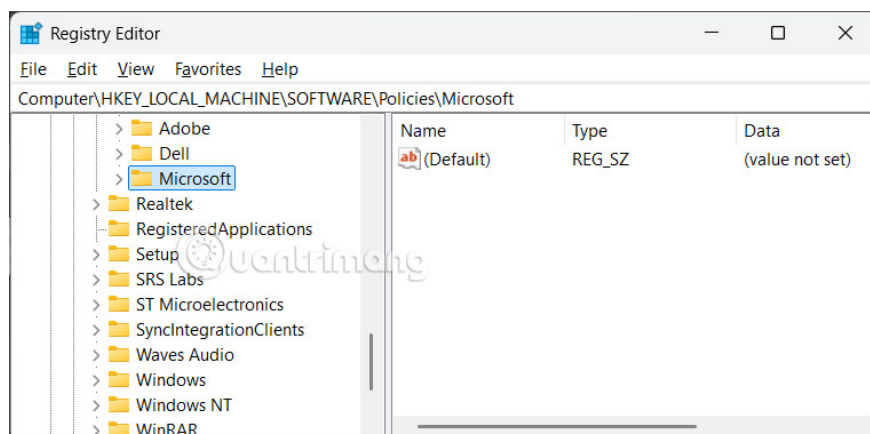
If you want to revert to the original name, you can change the folder's name back to its original name.



## How to disable Edge via the Registry

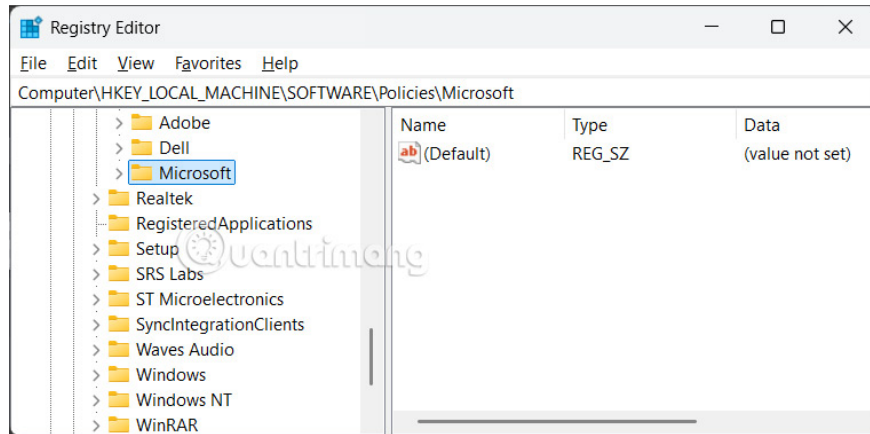
### Step 1:

Press the **Windows + R** key combination to open the **Run dialog box**. Then type **regedit** and press OK to access it.

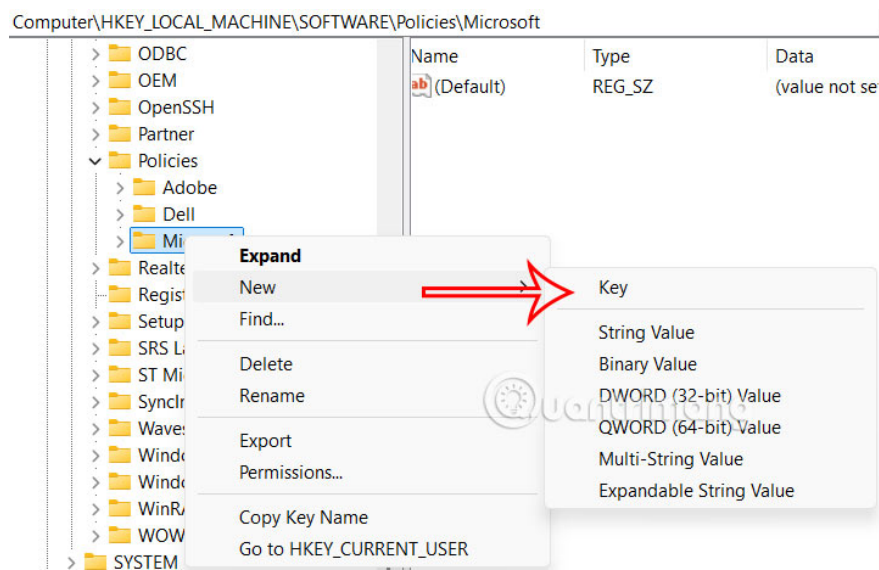


## Step 2:

In the Registry Editor interface, navigate to the path **HKEY\_LOCAL\_MACHINE\SOFTWARE\Policies\Microsoft** .

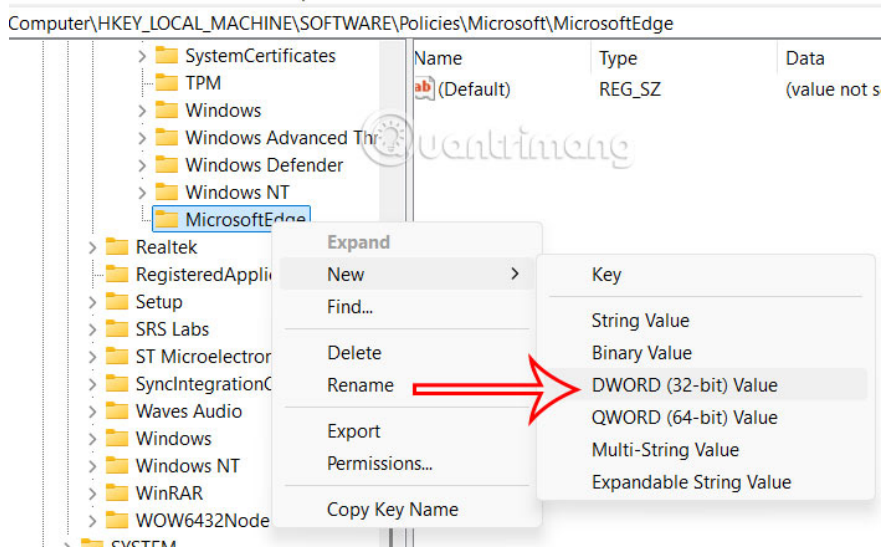


**Right-** click on Microsoft , then **click on New**, and then select **Key** to create a new key.

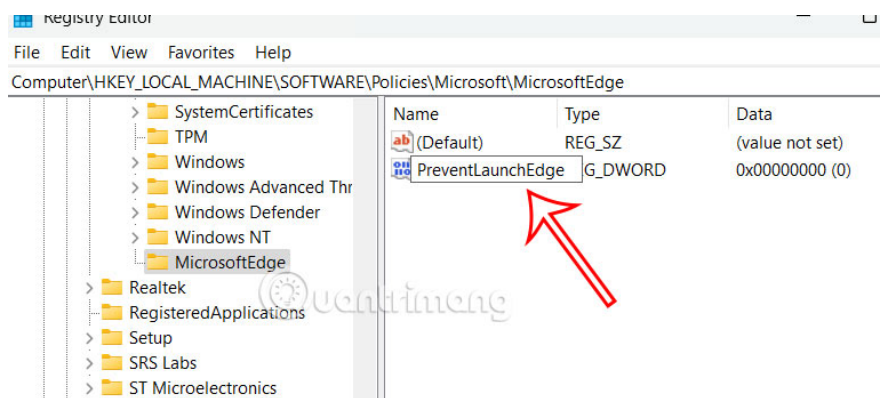


## Step 3:

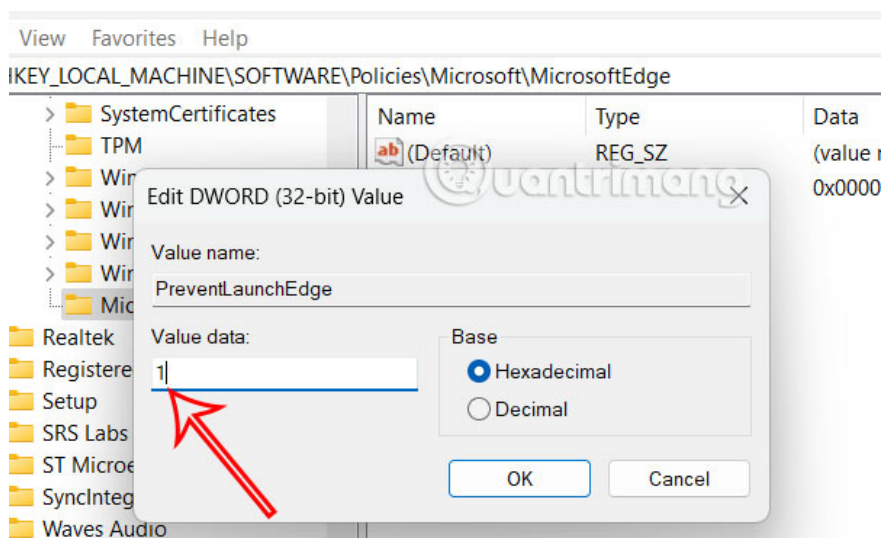
We name this new key **MicrosoftEdge** . Next, **right-click on the MicrosoftEdge key** and select **New**, then select **DWORD (32-bit) Value** .



Here, name the new key **PreventLaunchEdge** and then double-click.



Here, enter the value **1** and then press OK to save.



As a result, the Microsoft Edge browser cannot launch for use.

You finished reading the article "**Instructions on how to disable Microsoft Edge on Windows**" edited by the [TipsMake](#) team. We hope this article has provided you with many useful tech tips and tricks. You can search for similar articles on tips and guides. Thank you for reading and for following us regularly.

---