

# Instructions on how to check which SATA HDD slot the hard drive supports?

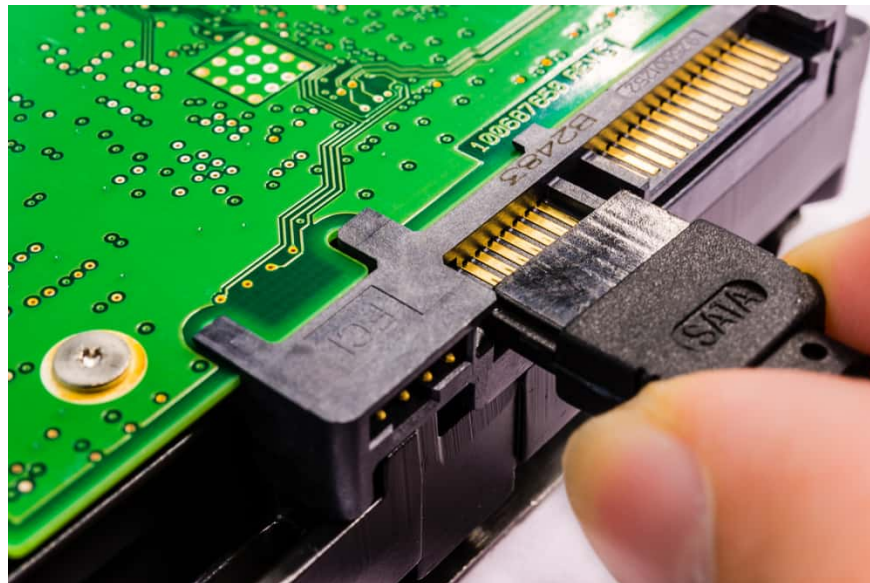
What is a SATA HDD slot? What are the differences between SATA HDD slot standards? How to check which SATA HDD slots your computer hard drive supports with the fastest software!

In this article, TipsMake will help you learn about what type of **SATA HDD slot** is? SATA HDD slot is considered an extremely important and familiar slot standard that has appeared on computers and laptops from the past to the present. Besides, you will understand more about how to check which SATA supported computer and hard drive.

## What is SATA HDD slot?

**SATA HDD slot** or Serial ATA (Serial Advanced Technology Attachment) is an IDE connection standard used to connect to devices such as CDs, hard drives and to the motherboard. SATA HDD slots are often used for cables and connection slots manufactured based on this standard.

Almost all SATA HDD cables and slots use a 7-pin connector to connect the hard drive to the motherboard. They are also used to connect other SSD devices. Users can also connect the computer using a SATA cable through the eSATA standard slot to an external hard drive.



SATA HDD slots are characterized by the fact that both ends of the slot can be reversed on the drives connected to them, with the pins of one end compatible with the other end. In addition, the length of the SATA cable also

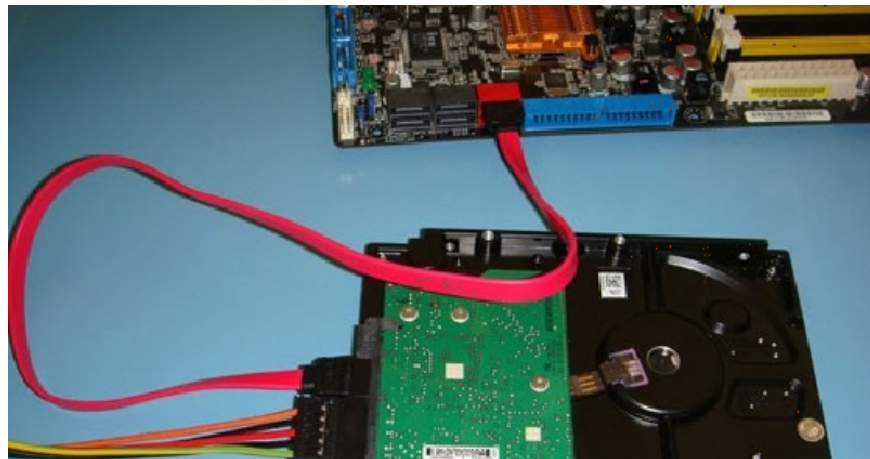
helps users distinguish what type of cable it is.

They help provide high-speed data connections to the rest of the computer, transmitting data on demand, while the power jack is where the power outlet connected to the computer first comes into play.

## The role of SATA HDD slot

Compared to the outdated PATA standard with 40 pins and 80 wires, the *SATA HDD slot* uses a seven-wire cable. This is a cost-saving way to reduce cable traffic and improve airflow and cooling for the computer.

SATA slots are capable of high-speed data transmission as well as enhanced error detection and correction during data transmission.



The SATA HDD slot also supports hot plugging, which allows users to insert/remove devices from the slot while the power is on, and the installed devices will still function normally as soon as they are connected to the computer.

In addition, **the SATA HDD slot** plays a role for hard drives and SSDs with large capacities. The SATA HDD slot also plays a role in increasing the power in data transmission between storage devices and computers.

## SATA HDD Slot Types

Currently, computers are using 2 types of SATA HDD slots:

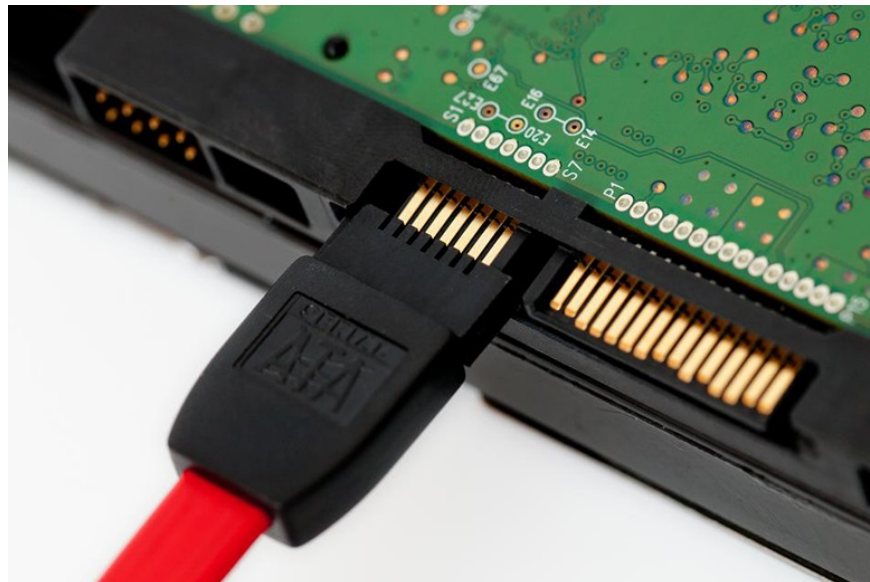
### SATA data cable slot

SATA data cable slots have 8mm wide connectors on each end. These connectors have seven conductors and can be up to a meter long. These connectors have two ends that connect to the motherboard and the hard drive.

*SATA HDD slot* connectors can easily fit into small surfaces and provide more space for cooling. These connectors will have a locking mechanism to keep the plug in the socket to reduce the risk of the plug falling out. Differential signaling on SATA HDD slots also helps prevent data loss during data transfer.

### SATA power cable slot

The SATA power cable slot includes a wider 15-pin connector. This is a significant improvement over previous versions of the connector, which typically had four pins. These connectors will provide additional voltage levels of 3.3V, 5V, and 12V as needed, with three parallel pins providing each voltage.

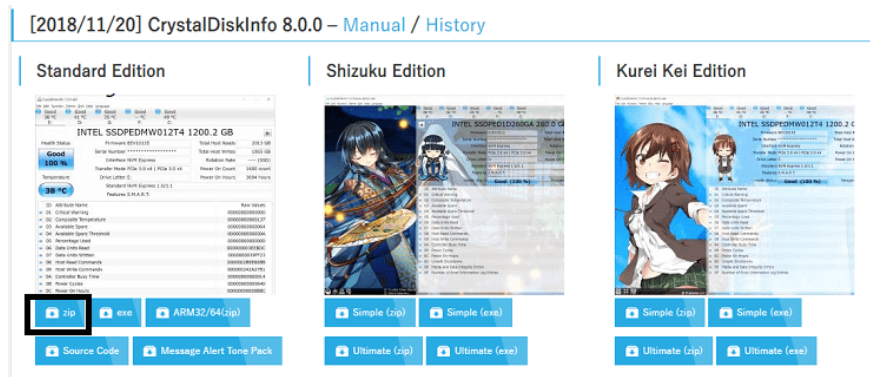


## Instructions on how to check which SATA HDD slot your computer and hard drive support?

Using software is one of the quickest and easiest ways to check which SATA standard your computer supports.

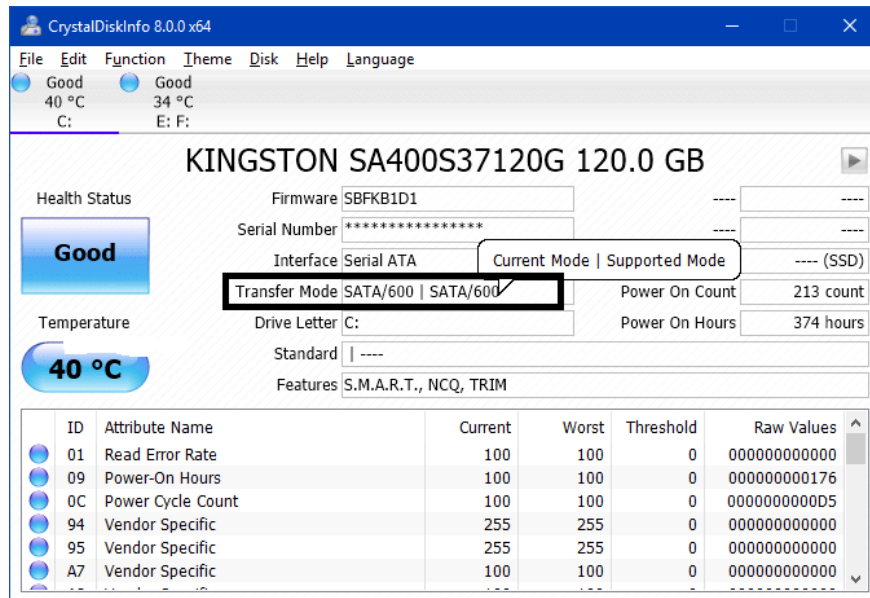
To check, you download the software **CrystalDiskInfo**. CrystalDiskInfo is one of the software used to check the health of the hard drive accurately, and also used to check the computer and hard drive support which SATA.

You can choose the version to download, all are free. Choose the Portable (Zip) version to download, unzip and run immediately without installation.



After downloading, unzip => run the **DiskInfo32.exe** or **DiskInfo64.exe** file corresponding to the 32-bit or 64-bit Windows version you are using. The main software interface is as shown.

Then, pay attention to the Transfer Mode section to know which SATA standard your computer is using.



If SATA/300 is using SATA 2 standard and SATA/600 is SATA 3 standard with higher speed. For example, you are using SATA 3 standard for your current hard drive and of course this hard drive also supports SATA 3.

### Conclude:

If you need large storage capacity at a reasonable cost and general usage needs, **SATA HDD slot** is the connection standard that should be on your motherboard. With the sharing of TipsMake above, we hope you can better understand what a SATA slot is as well as how to check which SATA standard your computer hard drive supports.

You finished reading the article "**Instructions on how to check which SATA HDD slot the hard drive supports?**" edited by the [TipsMake](#) team. We hope this article has provided you with many useful tech tips and tricks. You can search for similar articles on tips and guides. Thank you for reading and for following us regularly.