

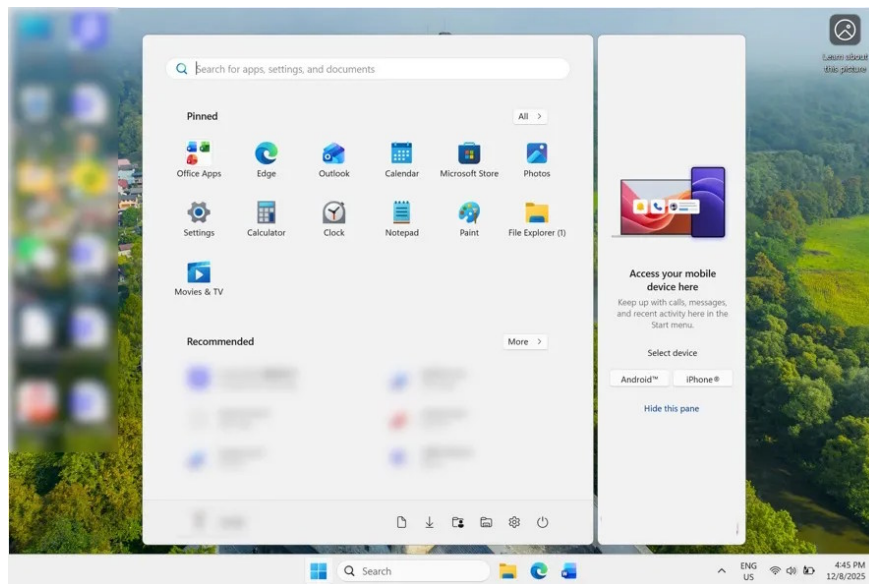
Instructions on disabling the split Start menu in Windows 11

Microsoft has been experimenting with splitting the Windows 11 Start menu into two separate sections. If you don't like this setting, you can disable the split Start menu by following the instructions below.

Microsoft has been experimenting with splitting the Windows 11 Start menu into two separate sections. The main section displays standard content such as apps, the search box, suggestions, etc. The newly added separate section shows options to connect your phone to your computer to receive calls, notifications, and monitor messages. If you don't like this setup, you can disable the split Start menu using the instructions below.

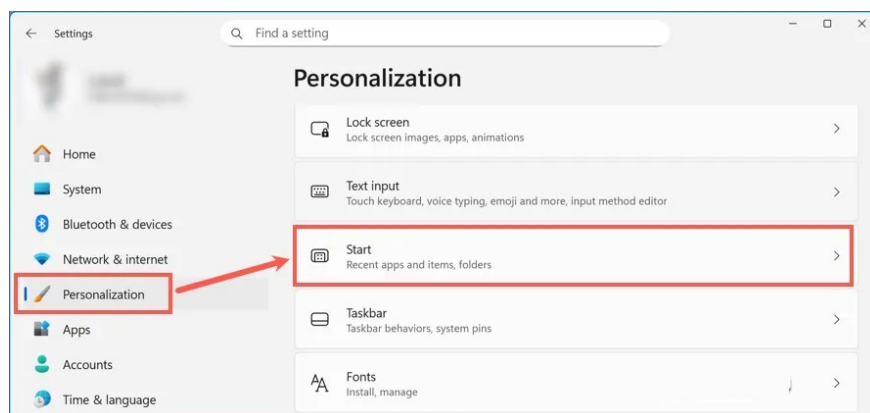
How to disable the split Start menu in Windows 11

The split Start menu interface on Windows 11 is shown below.



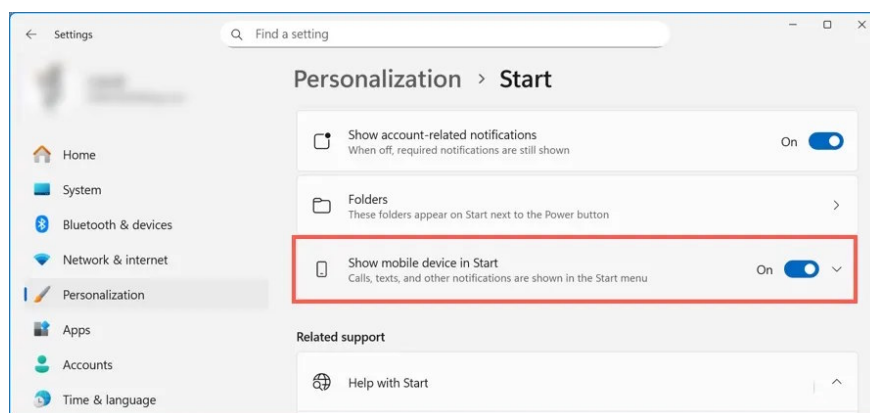
Step 1:

Open Settings on your computer, then select **Personalization** , and then click Start to **adjust the Start menu settings** .



Step 2:

In the user settings interface, scroll down and **turn off the "Show mobile device in Start" setting** to prevent connected phones from appearing in the Start menu on your computer.



As a result, you will see that the Start menu has returned to its previous state. This feature was already available through the Phone Link app, and Microsoft integrated it directly into the Start menu so you can access it whenever needed.

You finished reading the article "**Instructions on disabling the split Start menu in Windows 11**" edited by the [TipsMake](#) team. We hope this article has provided you with many useful tech tips and tricks. You can search for similar articles on tips and guides. Thank you for reading and for following us regularly.