

# Instructions on 3 ways to fix Full Disk error 100% on Windows most effectively

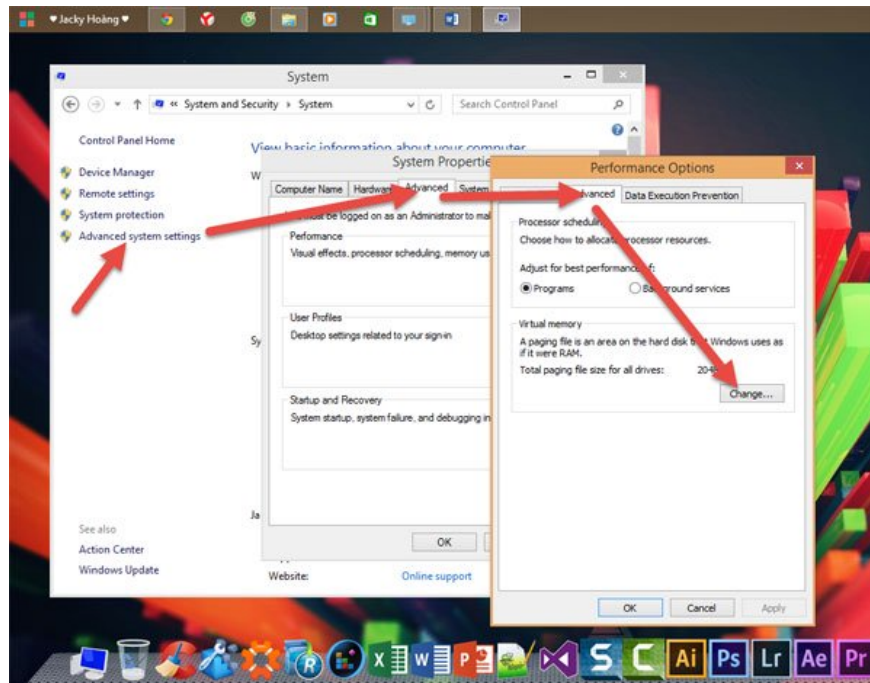
- When a Full Disk error occurs, the laptop will be slow, stuttered, jerky, and lag making users feel extremely uncomfortable, even directly affecting work efficiency. So to fix the above error, please refer to 3 ways in the article below.

Full Disk error is very difficult to overcome, the common solutions are only effective for a while and then return to the same condition, the drive is still frozen and disk 100. This error appears from Windows 8 to 10 The reason for this is that Microsoft is increasing the security and preventing pirated versions (only installing the owner). So the best way to fix it is to completely delete the installation partition and the boot partition (deep format these 2 partitions). At the same time, the drive is not bad, because just a slight bad happens to an installation error, then installs using usb and of course runs in dos.

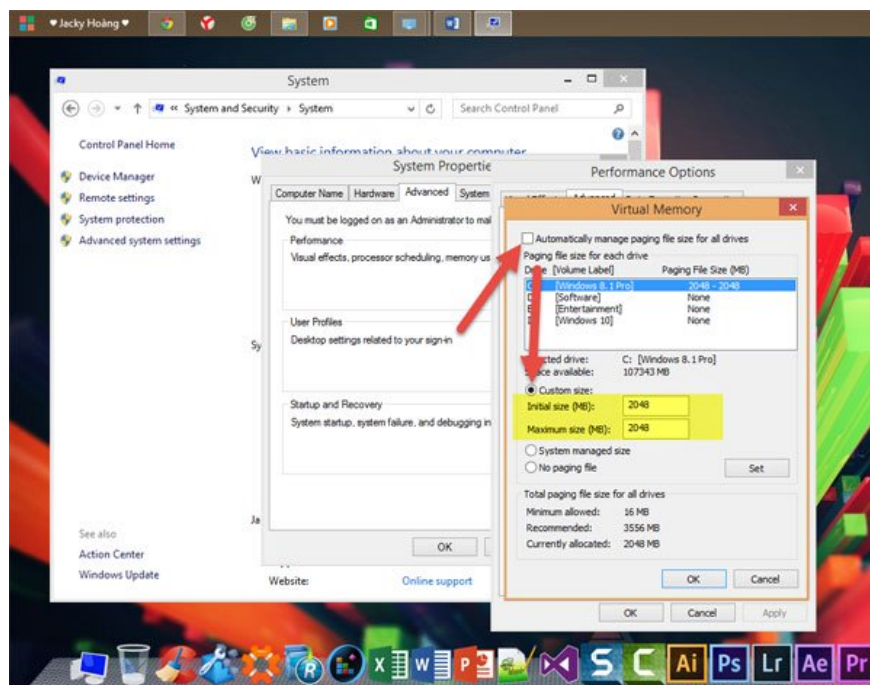
## Here are the 3 most specific ways to fix Full Disk error 100% on Windows:

### Method 1: Set virtual Ram manually instead of leaving automatic mode

Leaving Ram in Automatically mode is one of the reasons why the computer is stuck with Full Disk error. So instead of leaving Auto mode, you should Set virtual RAM hard. How to do as the image below:



In the Virtual Memory Tab, uncheck Automatically manage paging file size for all drives. Select the drive where your Operating System is installed (usually drive C). Then tick Custom size. Under Maximum size and Initial size, hard set for virtual Ram is equal to 1/2 Real Ram.



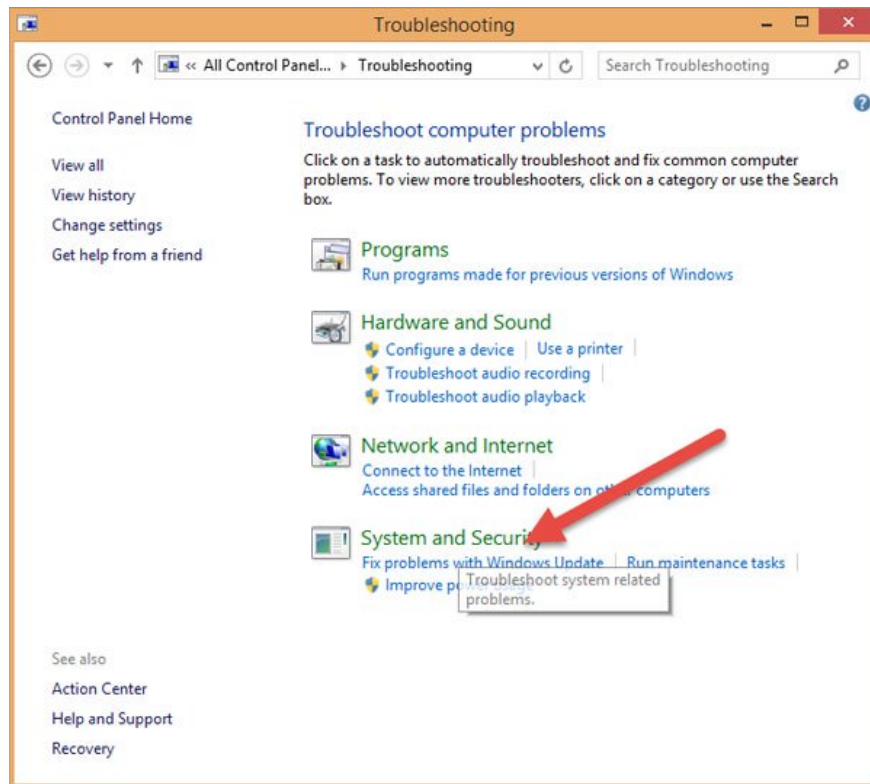
Finally click OK to save, and start the change so it takes effect.

## Method 2: Handling Troubleshooting

Go to Control Panel, type Troubleshooting in the search box and click on Troubleshooting.

Picture 3 of Instructions on 3 ways to fix Full Disk error 100% on Windows most effectively

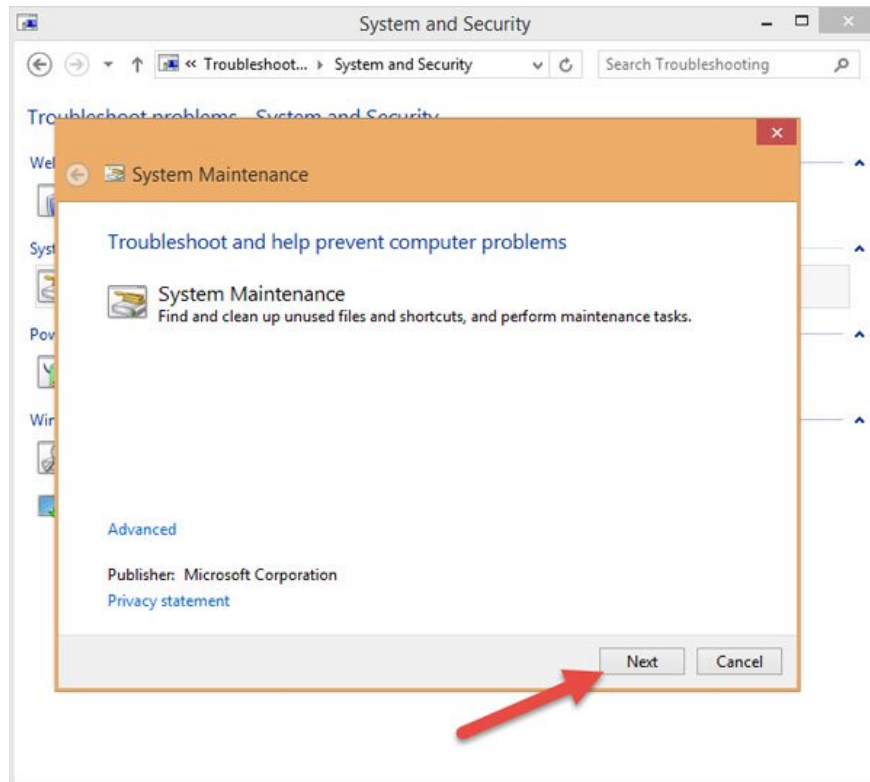
When the new window appears, click on System and Security:



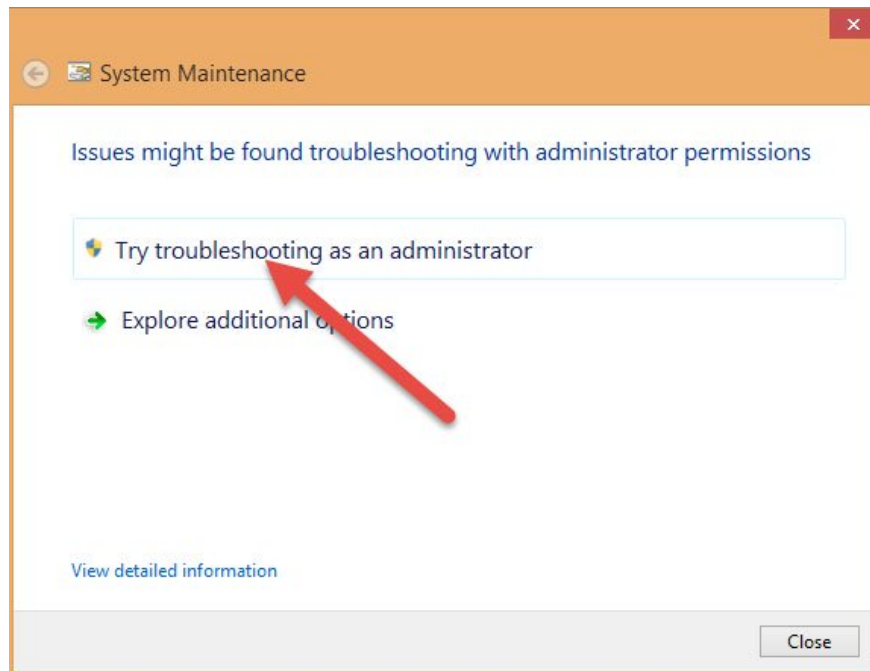
A new window appears, click System Maintenance:

Picture 5 of Instructions on 3 ways to fix Full Disk error 100% on Windows most effectively

Click Next:

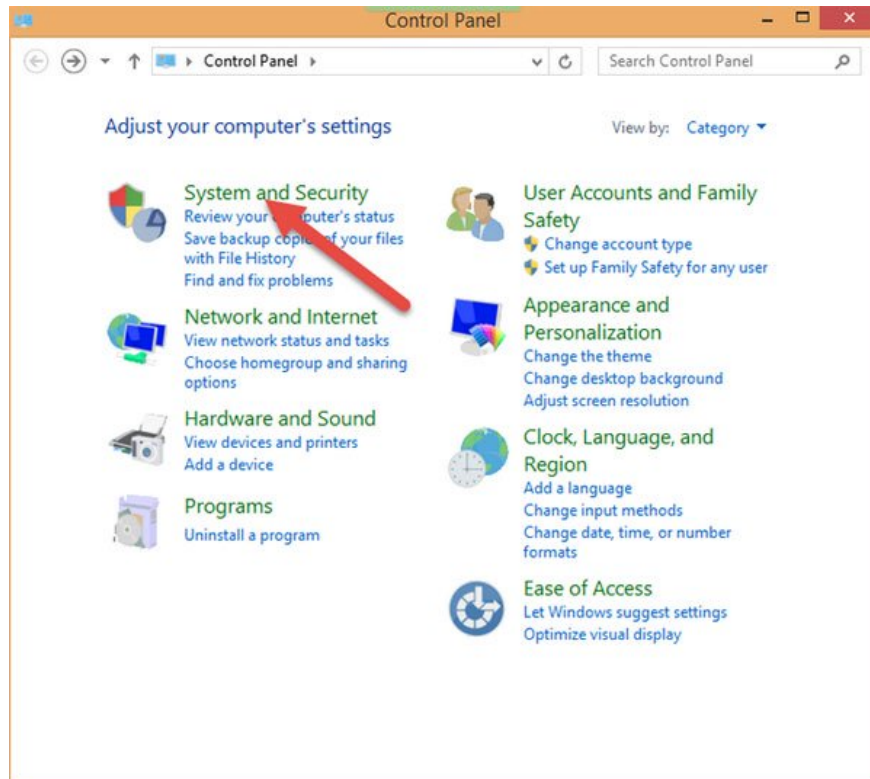


Then, let the machine work until the System Maintenance message appears, click on the Try troubleshooting as an administrator section:



### **Method 3: Turn off Maintenance**

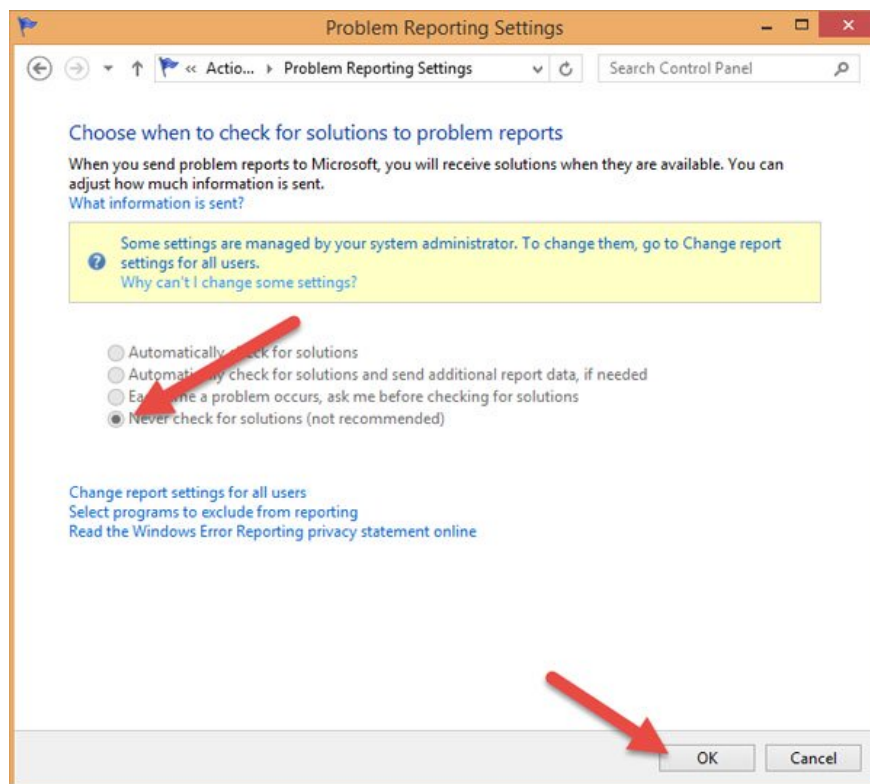
Go to Control Panel, select System and Security and Action Center:



Then, click on the arrow in the Maintenance settings, select Settings:

Picture 9 of Instructions on 3 ways to fix Full Disk error 100% on Windows most effectively

Click Never check for solutions (Not recommended) and OK:



You finished reading the article "**Instructions on 3 ways to fix Full Disk error 100% on Windows most effectively**" edited by the [TipsMake](#) team. We hope this article has provided you with many useful tech tips and tricks. You can search for similar articles on tips and guides. Thank you for reading and for following us regularly.

---