

Instructions for viewing and managing passwords saved on Edge and Internet Explorer browsers

Like other browsers, Microsoft Edge browser on Windows 10 also supports password storage on the web page in the browser. Whenever you visit a website and sign in with your username and password, you will be notified to store your password information.

Like other browsers, **Microsoft Edge** browser **on Windows 10** also supports password **storage** on the web page in the browser. Whenever you visit a website and sign in with your username and password, you will be notified to store your password information.

Although you can **delete** or **edit the** password and the information on the Edge browser is quite easy, the downside is that you cannot directly view the password saved in the Edge browser.

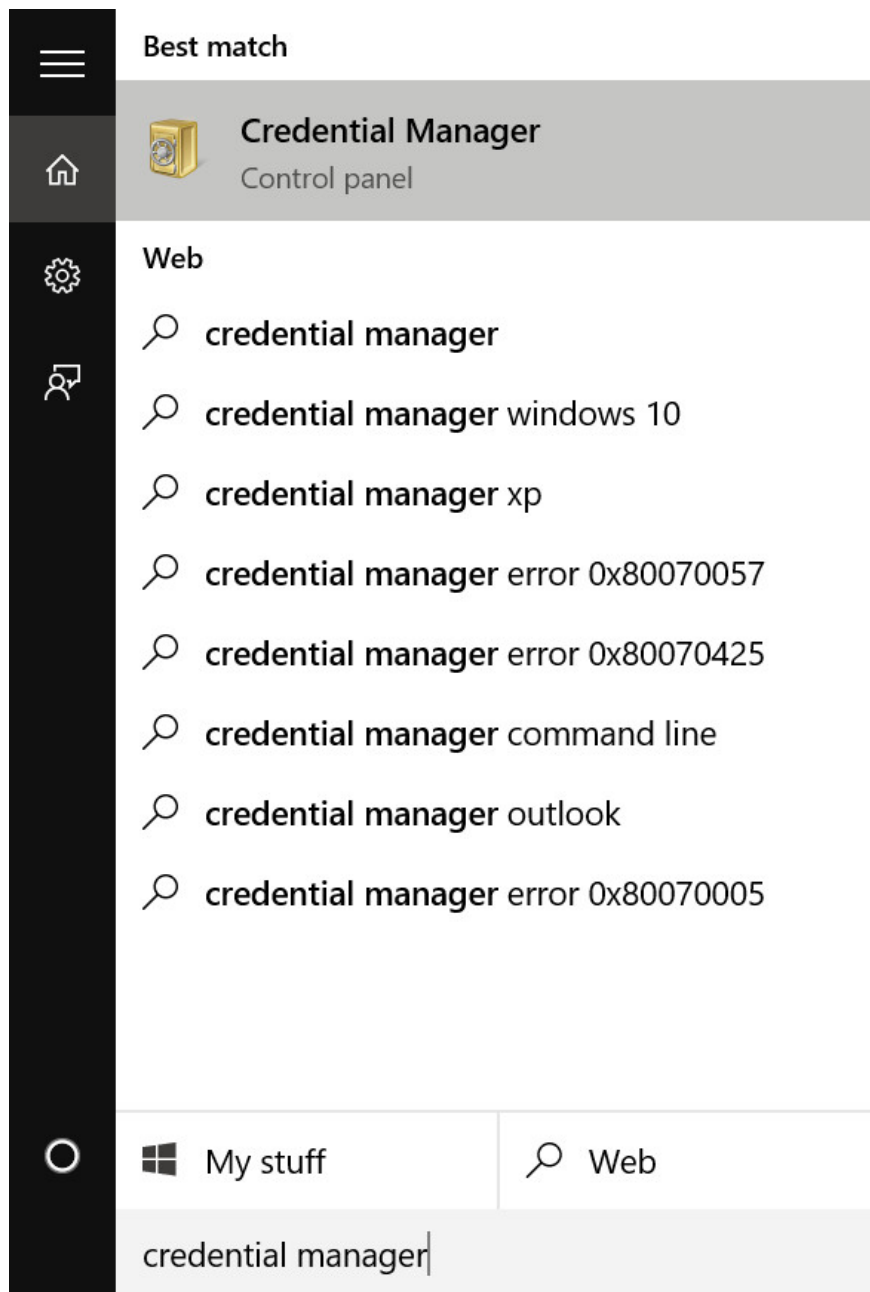
The password saved on the Edge browser is managed by Credential Manager. To view the saved password on the Edge browser, you will have to open the **Credential Manager** .

1. View the saved password on the Edge browser

Step 1 :

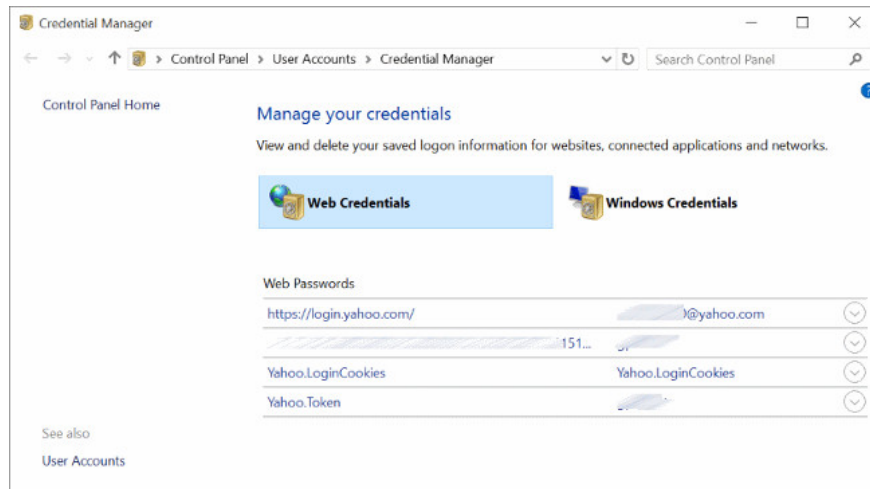
Enter Credential Manager into the **Search** box on the **Start Menu** or **Search** pane of **the Taskbar** and press Enter.

Alternatively, open the **Control Panel** , then click **User Accounts** then click on **Credential Manager** .



Step 2 :

Now on the Credential Manager window, click the **Web credentials** to see all URLs with passwords saved in the Edge browser as well as **Internet Explorer** .



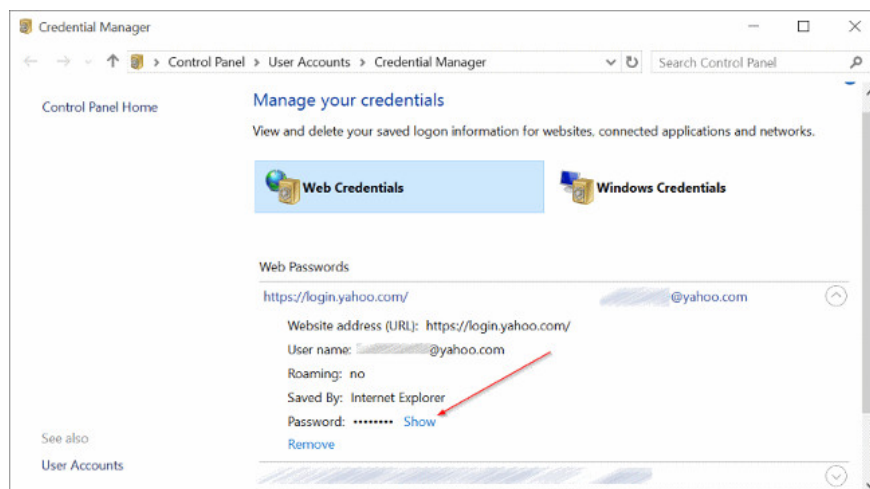
Step 3 :

Click on the **URL** you want to see the saved password.

Step 4 :

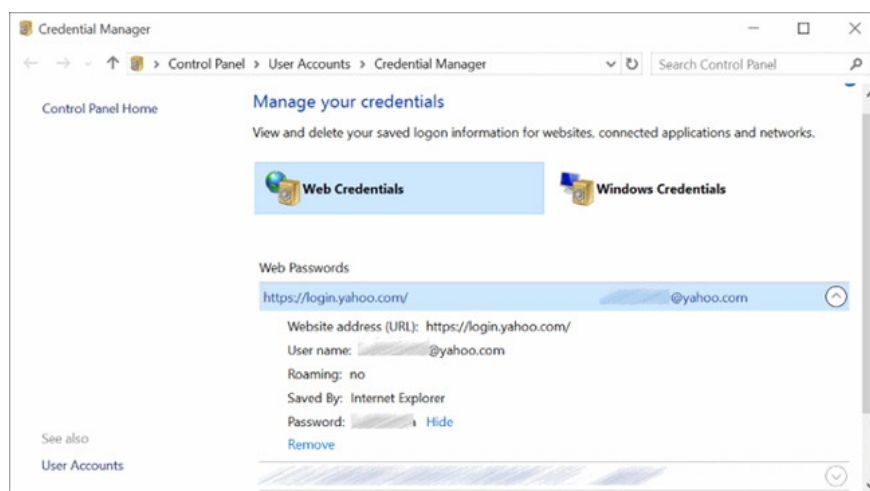
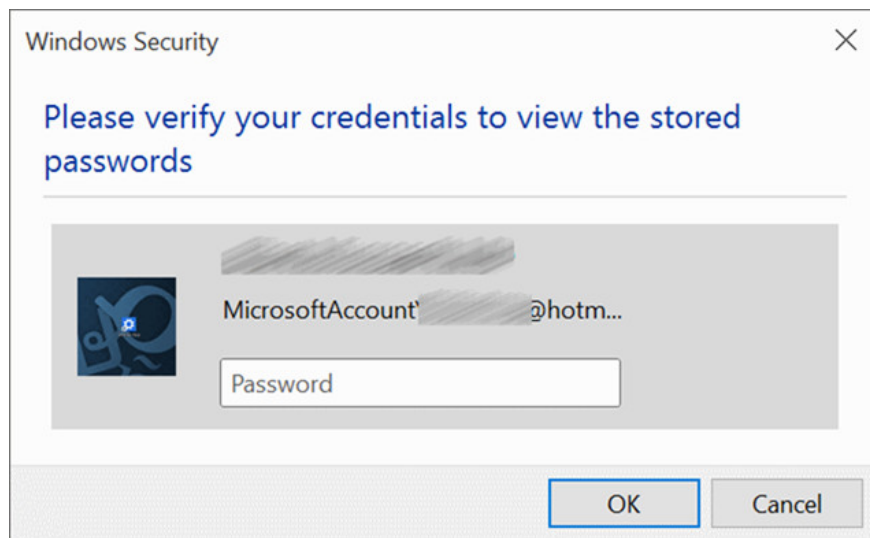
By default, Credentials Manager does not display passwords.

Note that all passwords on the Credentials Manager window include the saved password on the Internet Explorer Edge browser.



Step 5 :

To view the password, click on the **link Show** and then **enter** the account **password** if required.



2. Use 3rd party applications

IE PassView is a password management utility that displays passwords stored on **Internet Explorer** , and also allows you to delete unnecessary passwords.

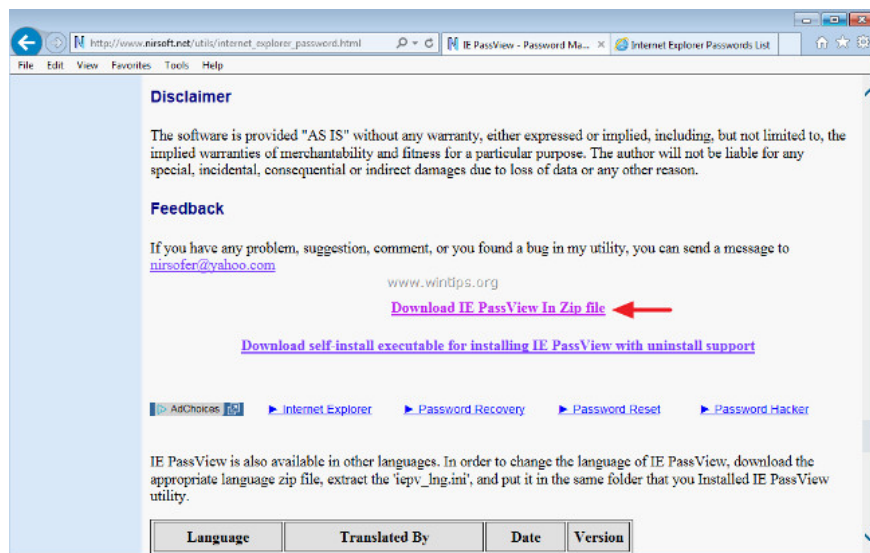
The utility supports all versions of Internet Explorer, from version 4.0 to version 11.0 and works on all Windows versions (including Windows 8 and Windows 10).

- On Windows 7, Vista and XP:

If you want to display the website password on Internet Explorer on **Windows 7** , Vista, and XP computers, follow the steps below:

1. Download and install **IE PassView** (iepv.zip) to your computer.

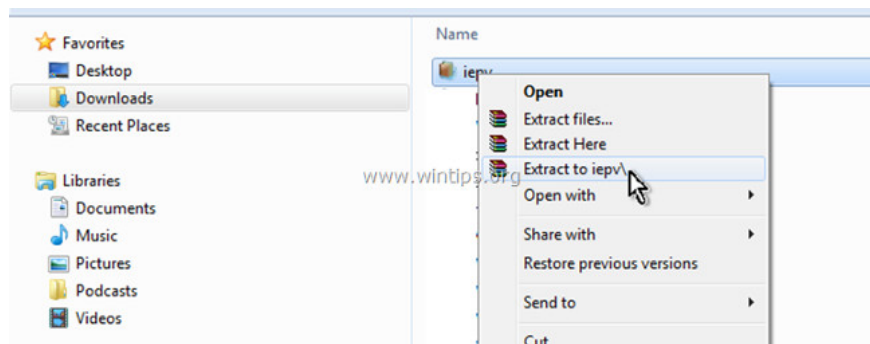
Download IE PassView (iepv.zip) to your device and install it here.



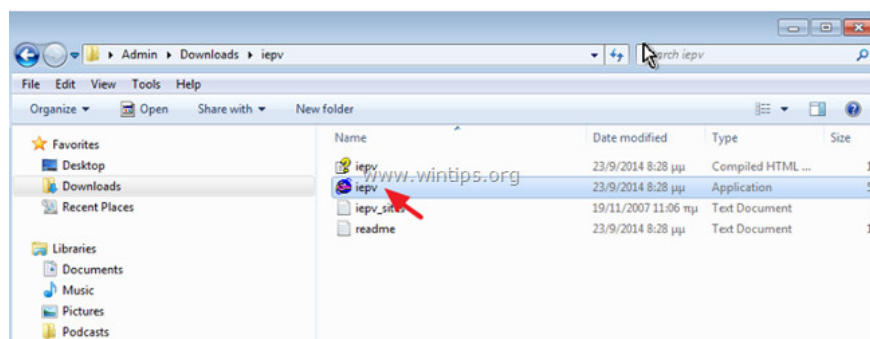
Note :

Some antivirus programs will detect this utility as a virus.

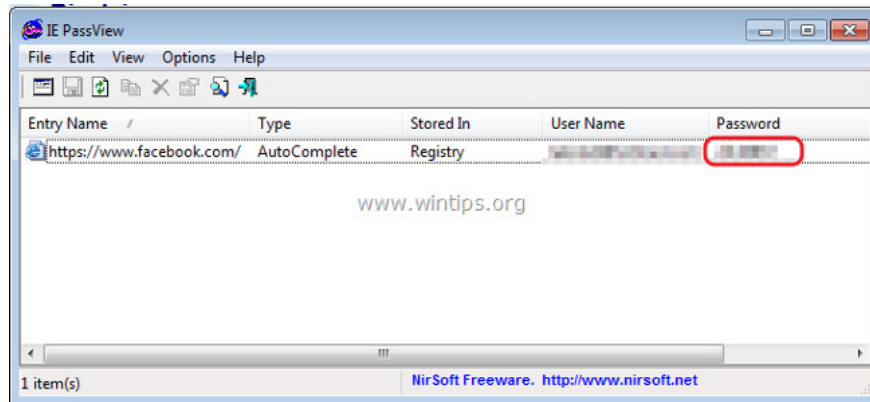
2. After the download process is complete, **unzip the "iepv.zip" file.**



3. Run the **iepv.exe** application.



4. Finally, at the **Password** column you will see the password of the website you want to find stored there.



Refer to some of the following articles:

1. Knowing these 21 shortcuts you will be able to use Edge browser fluently
1. Instructions to completely remove Youndoo.com on all browsers
1. This is how to speed up Edge browser

Good luck!

You finished reading the article "**Instructions for viewing and managing passwords saved on Edge and Internet Explorer browsers**" edited by the [TipsMake](#) team. We hope this article has provided you with many useful tech tips and tricks. You can search for similar articles on tips and guides. Thank you for reading and for following us regularly.