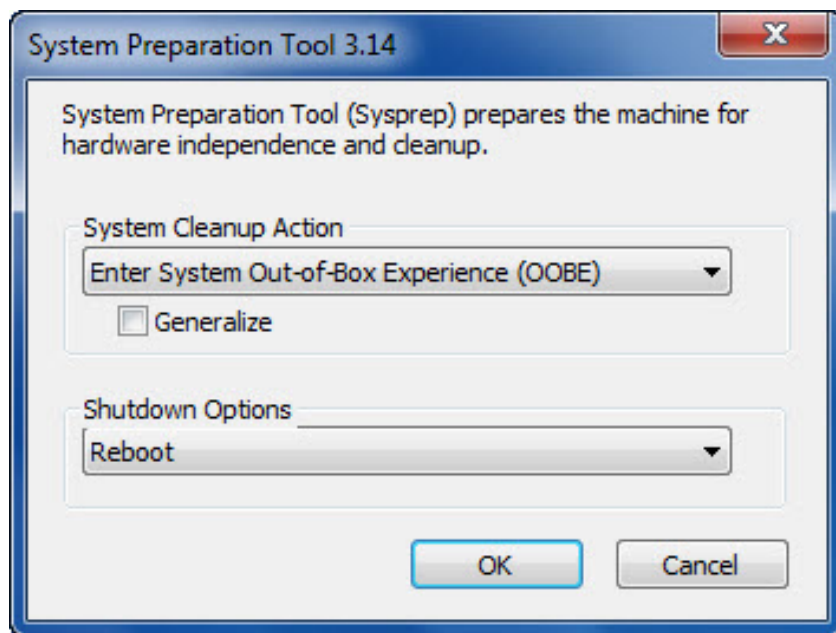


Instructions for using Sysprep on Windows 7/8/10

System Preparation, also known as Sysprep, is a tool that allows you to use simultaneously with other deployment tools for different purposes.

System Preparation , also known as **Sysprep** , is a tool that allows you to use simultaneously with other deployment tools for different purposes. And Sysprep is usually for System Administrators or OEMs.

After you have performed the initial setup steps on the computer, you can run the Sysprep tool to prepare the source computer copy and automatically deploy, apply to other computers. This tool can be found in the **WindowsSystem32Sysprep** folder .



In short, if you want to configure one computer for another xx, then Sysprep will help you do that quickly without having to install and configure each individual computer.

1. System Preparation Tool - Sysprep

You can use **Sysprep** along with other deployment tools to install Windows operating systems on new hardware.

This process will image disk imaging by setting up a computer configuration to create a new SID (SID stands for **Security Identifier**) when the computer starts up.

In addition, the **Sysprep** tool also cleans the user's data and settings as well as the data and settings on the computer that are not copied to the destination computer.

1. To create an image for an upgraded installation. Microsoft supports the use of **Sysprep** to create an image for an installed update with the Service Pack service pack. The Service Pack service pack includes all security and feature updates for Windows operating systems. Installing the Service Pack service packs will ensure your computer is up to date, smooth, more stable and definitely more interesting. Simply put, this is an all-in-one free upgrade package for your computer.
1. To install the operating system from an image created using a computer with **Hardware Abstraction Layer** or a computer with **Hardware Abstraction Layer** (HAL) is not compatible. However, this method only applies to Windows XP and Windows Server. 2003. Starting with Windows Vista, Sysprep is integrated with **Hardware Abstraction Layer** (HAL) independent of "out of box" settings.
1. To create a new image for the original system created, you can use an image in OEM installation customizations, or by using OEM multimedia settings. Microsoft only supports images created by original equipment manufacturers - OEM.
1. Microsoft also does not support the use of Sysprep to install the operating system from an image in case the image is created using a computer with another manufacturer's motherboard, or if the image is created using a computer with the same configuration but by another manufacturer.
1. If the user profile is copied on the default user profile, Microsoft will not support the use of Sysprep to create a new image for installation.
1. Microsoft does not support using Sysprep to install the operating system from an image in case the image is created using a computer with a different processor.

2. You can easily identify a Windows installation created with the Sysprep tool

1. Check CloneTag value in Registry. Sysprep sets the CloneTag value in **HKEY_LOCAL_MACHINE\key\SystemSetup** , saving the date and time images were prepared for backup.
1. Look in the Registry section, **HKEY_LOCAL_MACHINESystemSetup** to see if there is a **cmdline** lock, this key will execute the read Setup -newsetup -mini. And this command will replace GUI-mode Setup - GUI setting (GUI stands for graphic user interface, is a graphical user interface interface) - a graphical interface during the Mini Wizard.
1. Check **OemDuplicatorString** values. Testing this value is often used by original Equipment Manufacturers (OEMs) to store trademarks on the systems they create.
1. Check if the Setupcl.exe file already exists. This is the file used to change the SID (security identifier) ?? on the system. Find the file in the **% SystemRoot% System32 folder** .

You can refer to more:

1. Some things to know about the Sysprep process on Windows 7
2. Deploy Vista - Part 5: Use Sysprep
3. Fix the problem of restarting the computer continuously after installing XP SP3

Good luck!

You finished reading the article "**Instructions for using Sysprep on Windows 7/8/10**" edited by the [TipsMake](#) team. We hope this article has provided you with many useful tech tips and tricks. You can search for similar articles on tips and guides. Thank you for reading and for following us regularly.
