

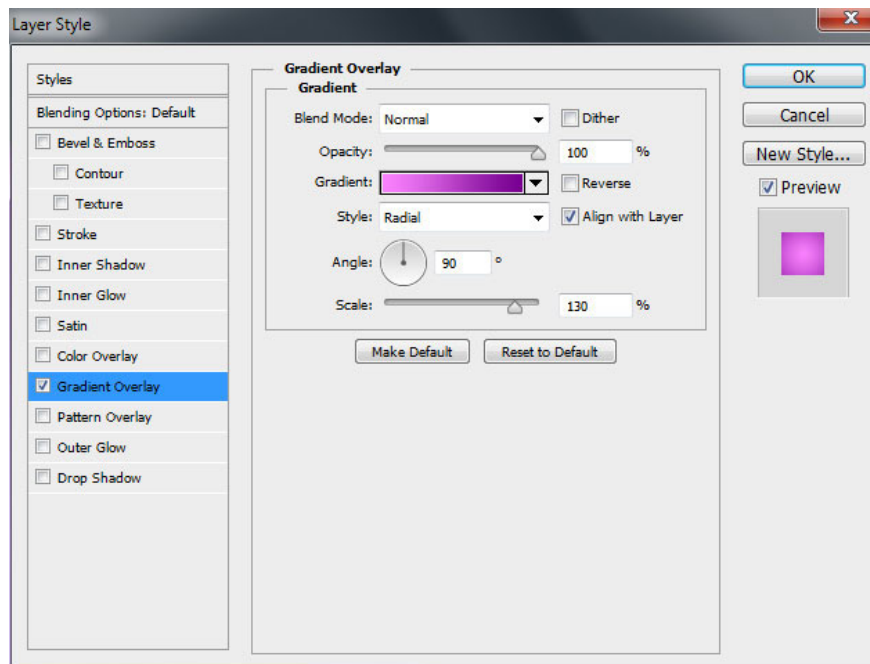
# Instructions for using Photoshop CS6 (Part 7): Creating Christmas cards with Christmas balls on a Stylish background

In this Photoshop CS6 tutorial series, we will continue to learn how to create Christmas cards with Christmas balls on a Stylish background!

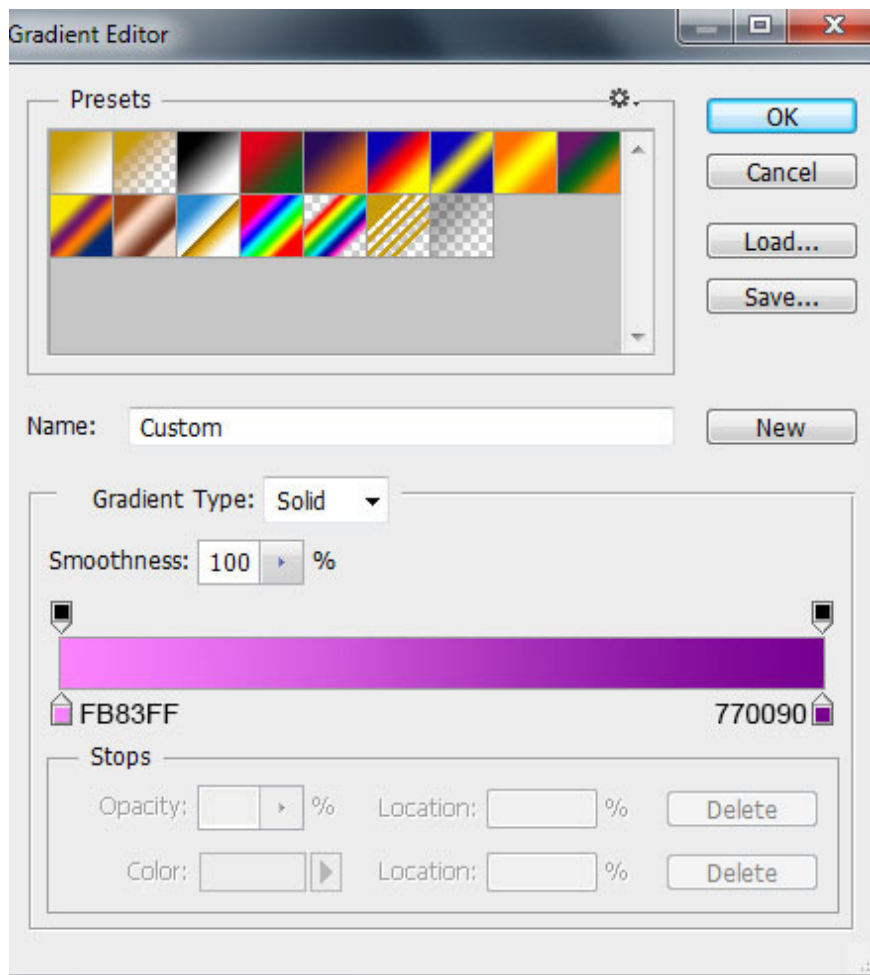
In this tutorial, we will continue to learn how to create Christmas cards on a Stylish background with Christmas balls using Adobe Photoshop CS6. Here will use advanced coupling techniques, layer style effects, custom shapes and brushes to create an impressive Christmas card.

## 1. 45 smart Photoshop tips you need to know (Part 1)

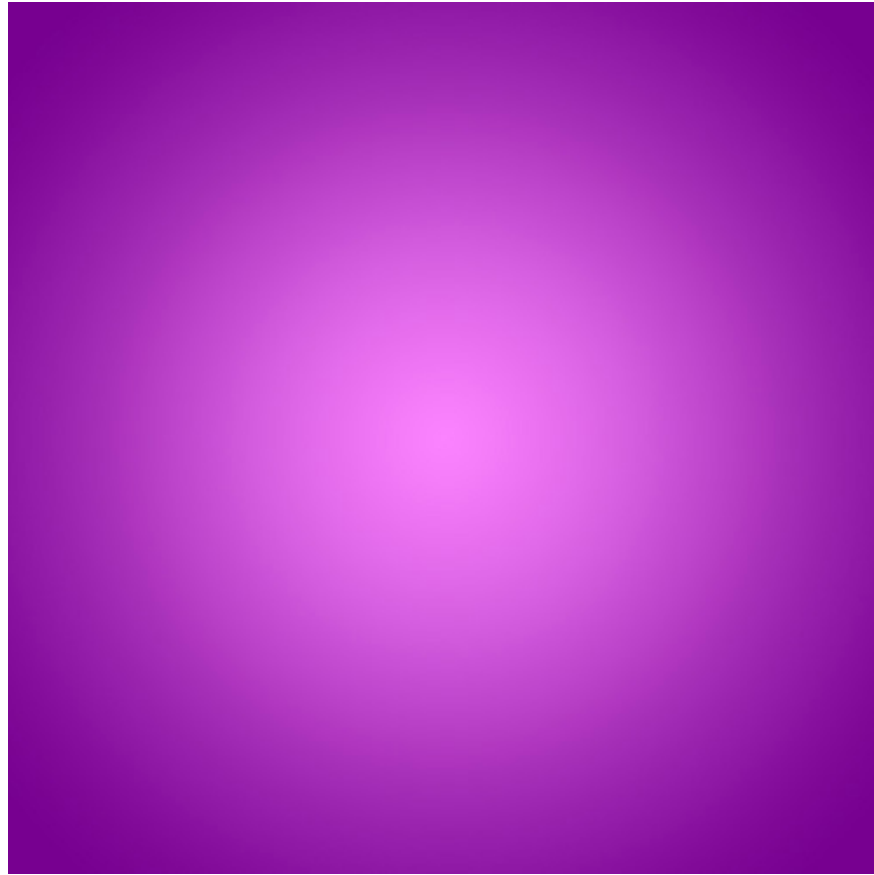
Start working by creating a new document ( **Ctrl + N** ) in **Adobe Photoshop CS6** with dimensions of **1000px x 1000px** ( **RGB** color mode), resolution of **72 pixels / inch** . Click the **Add a layer style** icon at the bottom of the **Layers panel** and select **Gradient Overlay** .



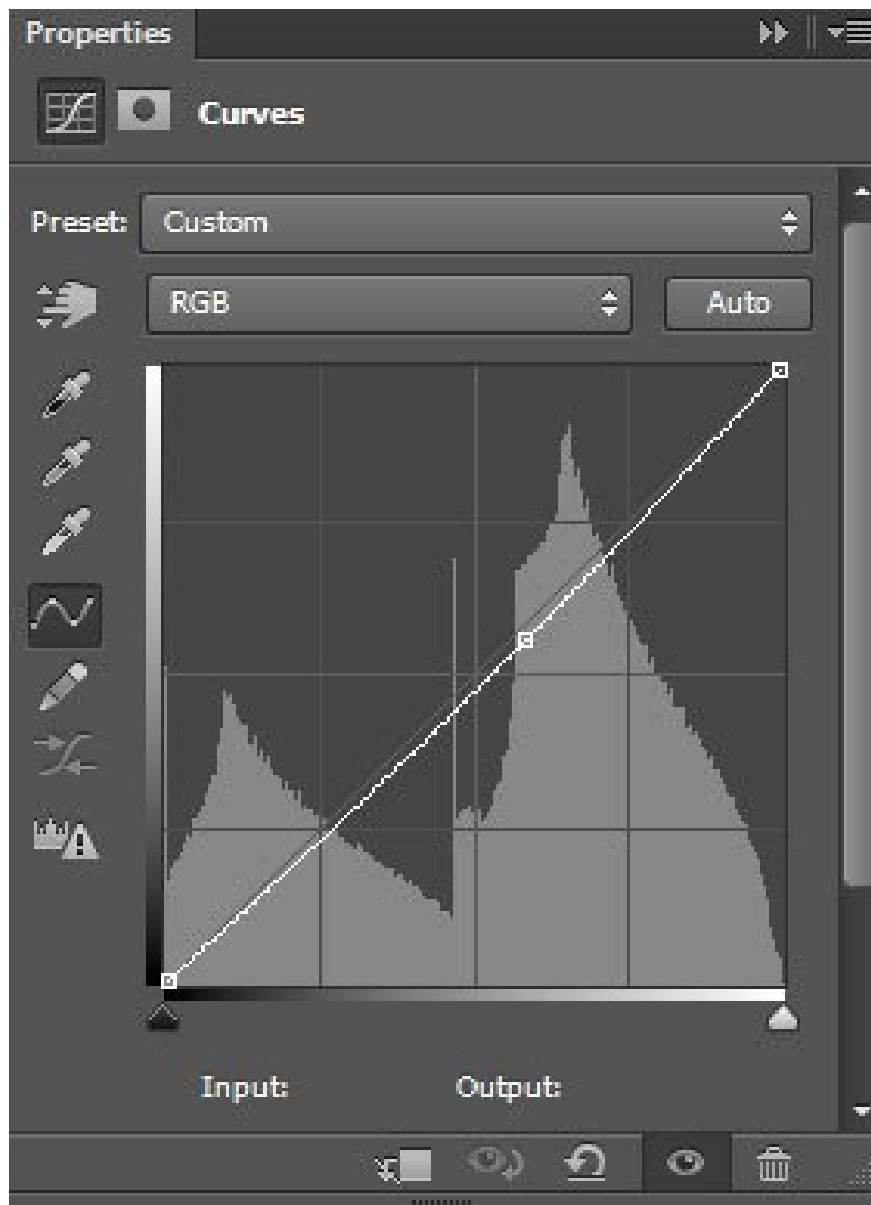
Click the color bar to open the **Gradient Editor** and set the color stops as shown. Click **OK** to close the **Gradient Editor** dialog box.



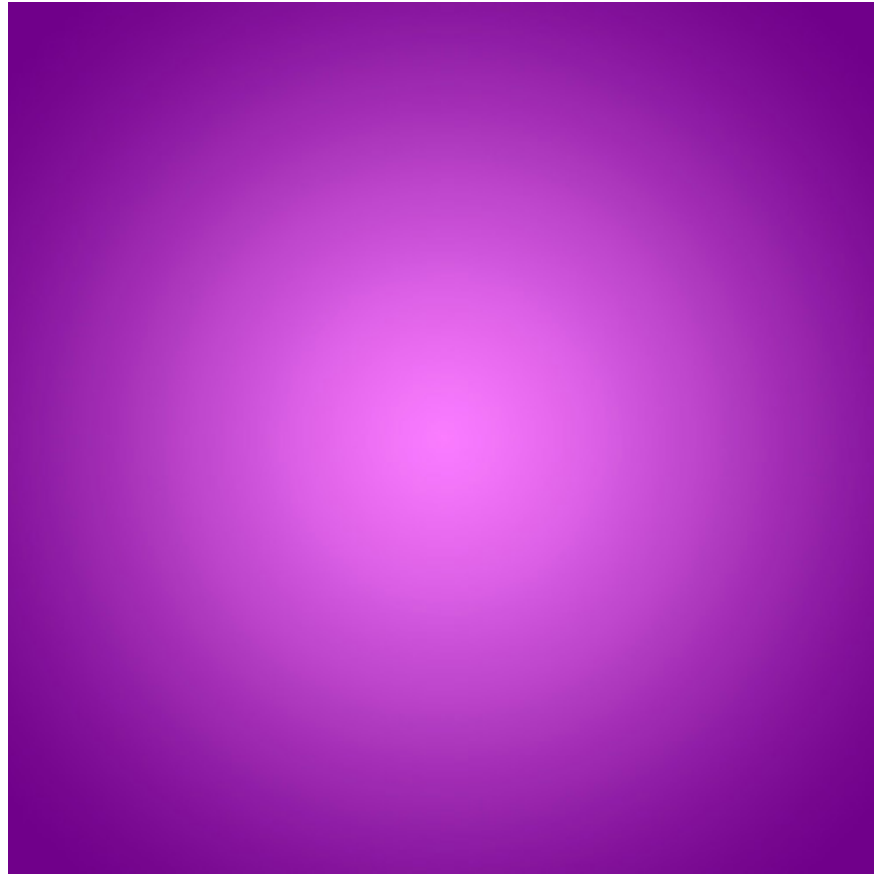
We have the background:



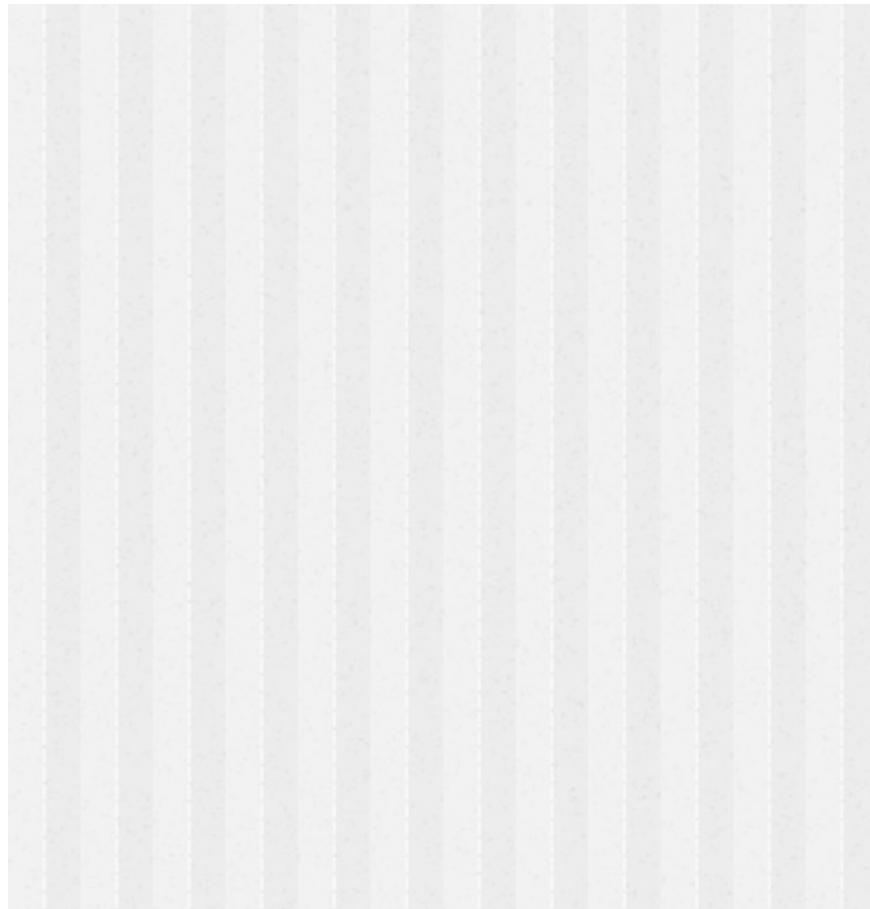
Click **Create new fill or adjustment layer** from the bottom part of the **Layers** panel and click **Curves** to adjust the curve as shown to make some minor color modifications.



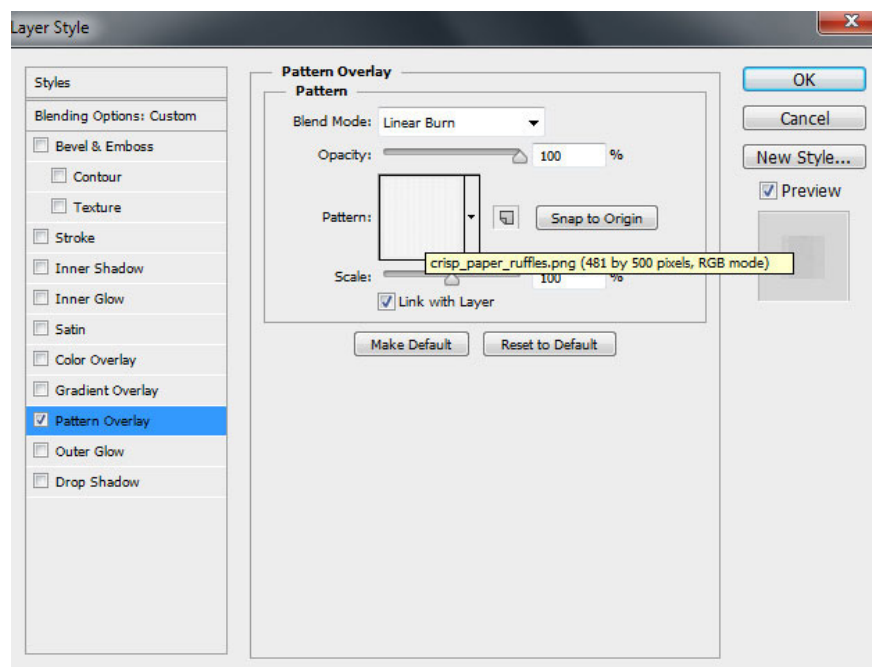
We have the next result:



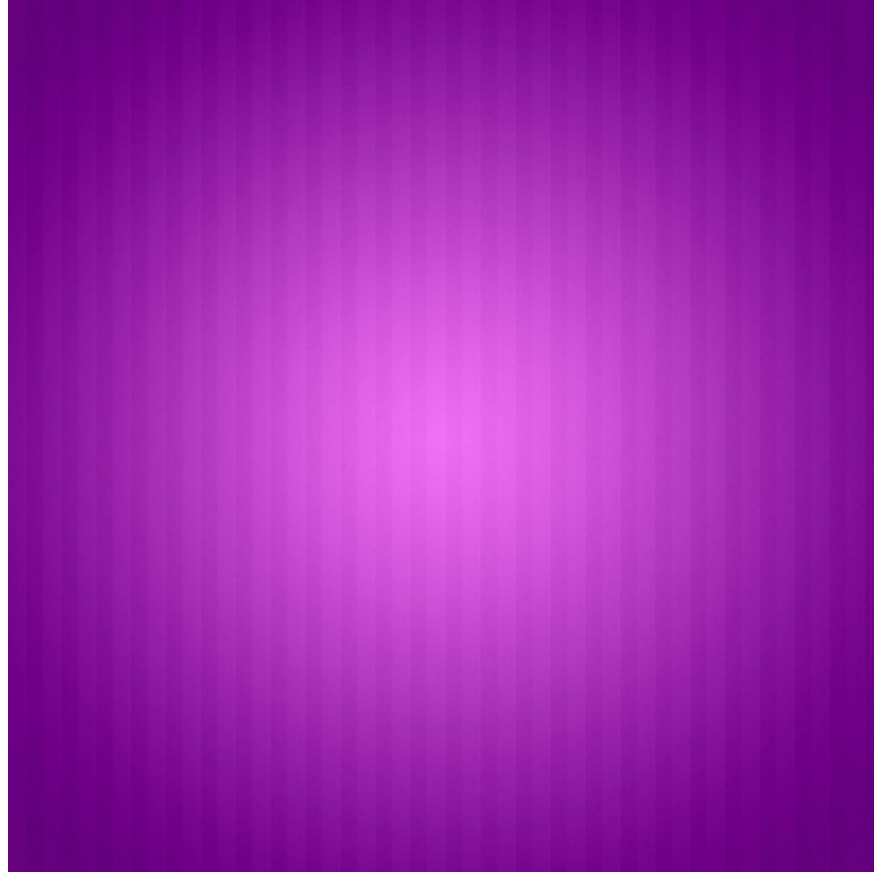
Find patterns, here use Crisp Paper Ruffles from [Subtlepatterns.com](http://Subtlepatterns.com). If you like, you can replace your own pattern. Open it in Adobe Photoshop and select **Edit > Define Pattern** . Enter a name for this template in the **Pattern Name** dialog box.



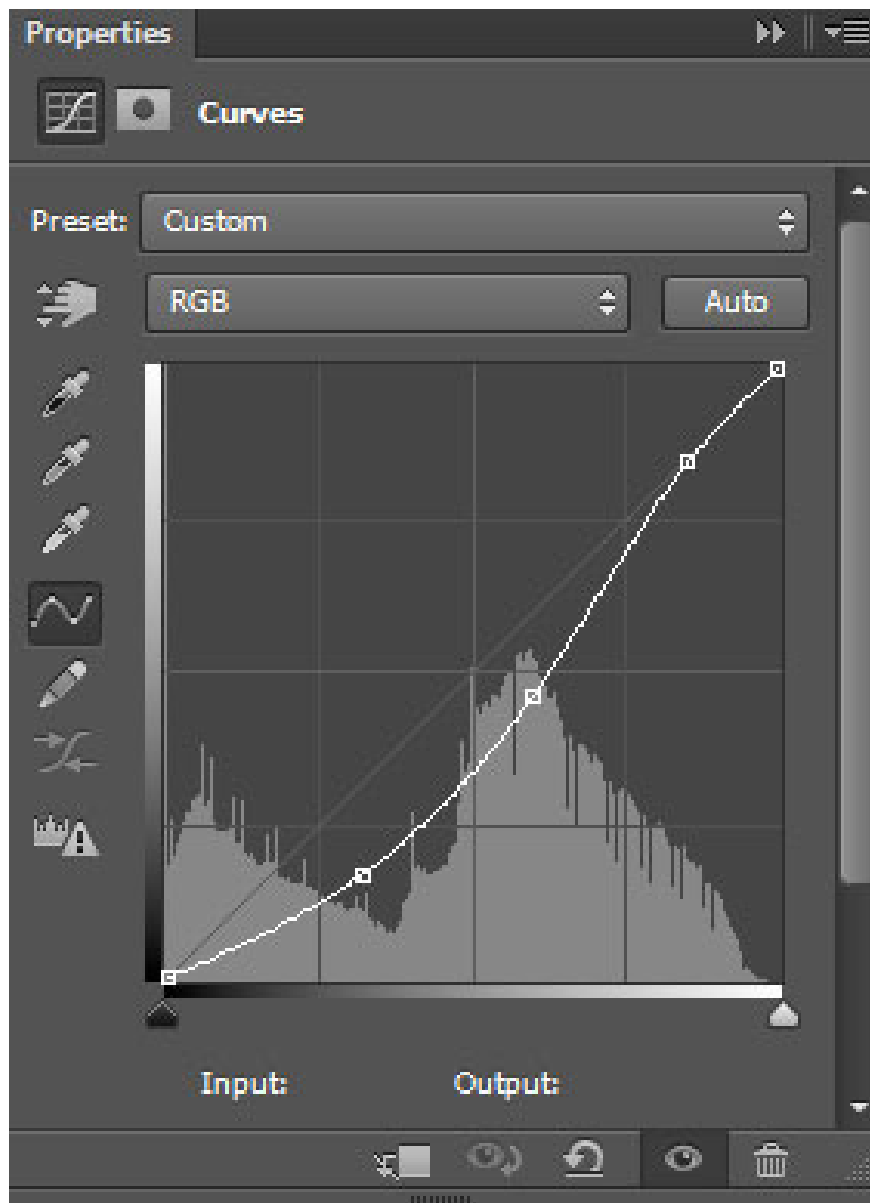
Next, create a new layer and set the **Fill to 0%** for this layer. Click the **Add a layer style** icon in the bottom part of the **Layers** panel and select **Pattern Overlay** . Click the **Pattern Overlay** dialog box and find the pattern created earlier in the list.



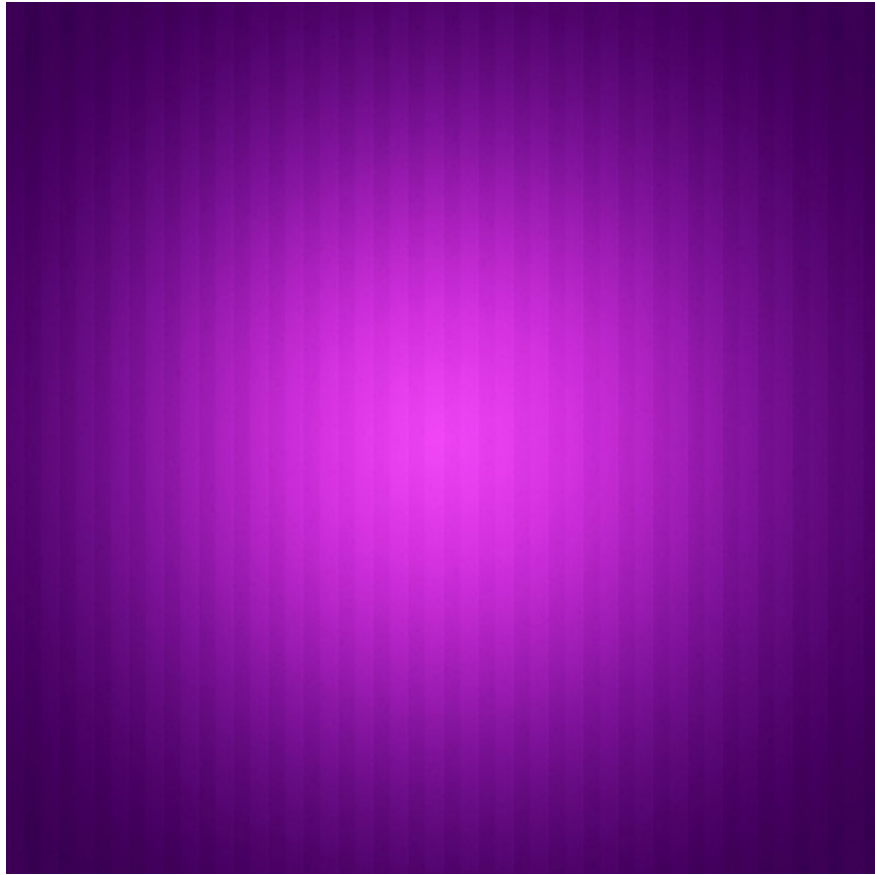
We have the background:



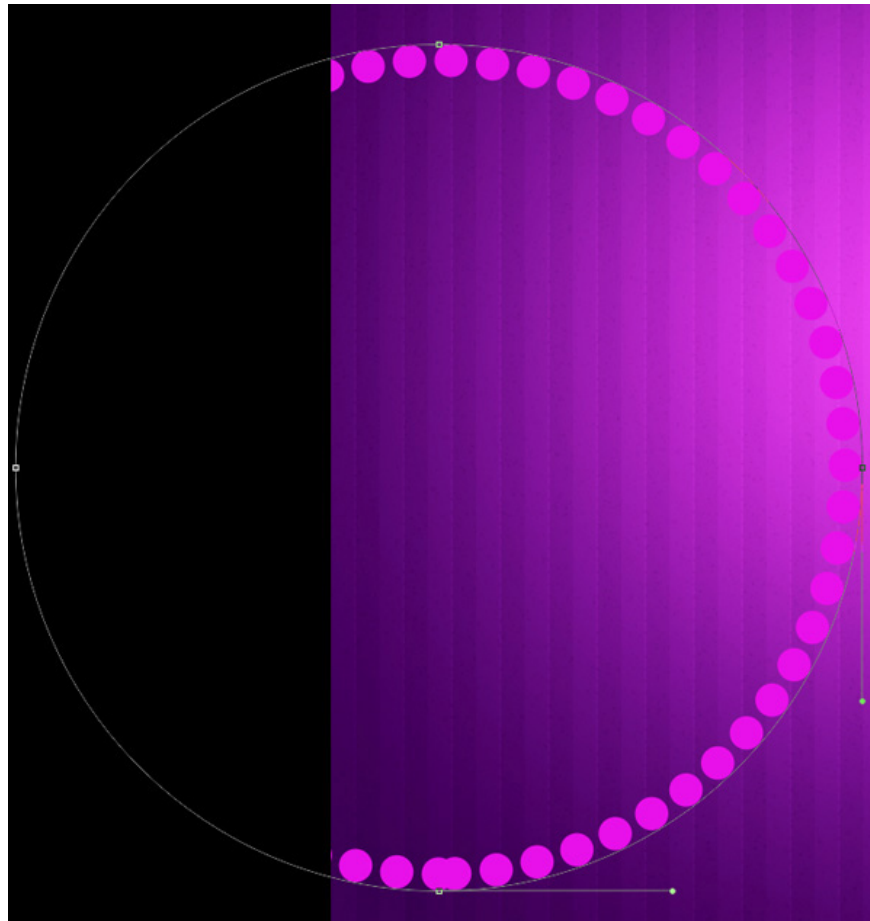
Click **Create new fill or adjustment layer** from the bottom part of the **Layers** panel and click **Curves** to adjust the curve as shown.



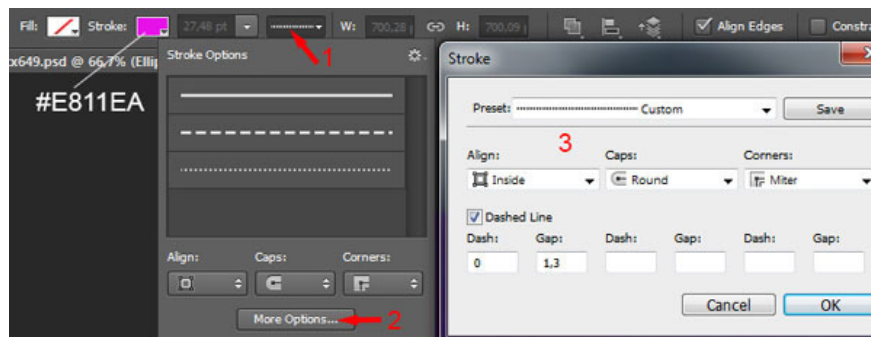
We have the next result:



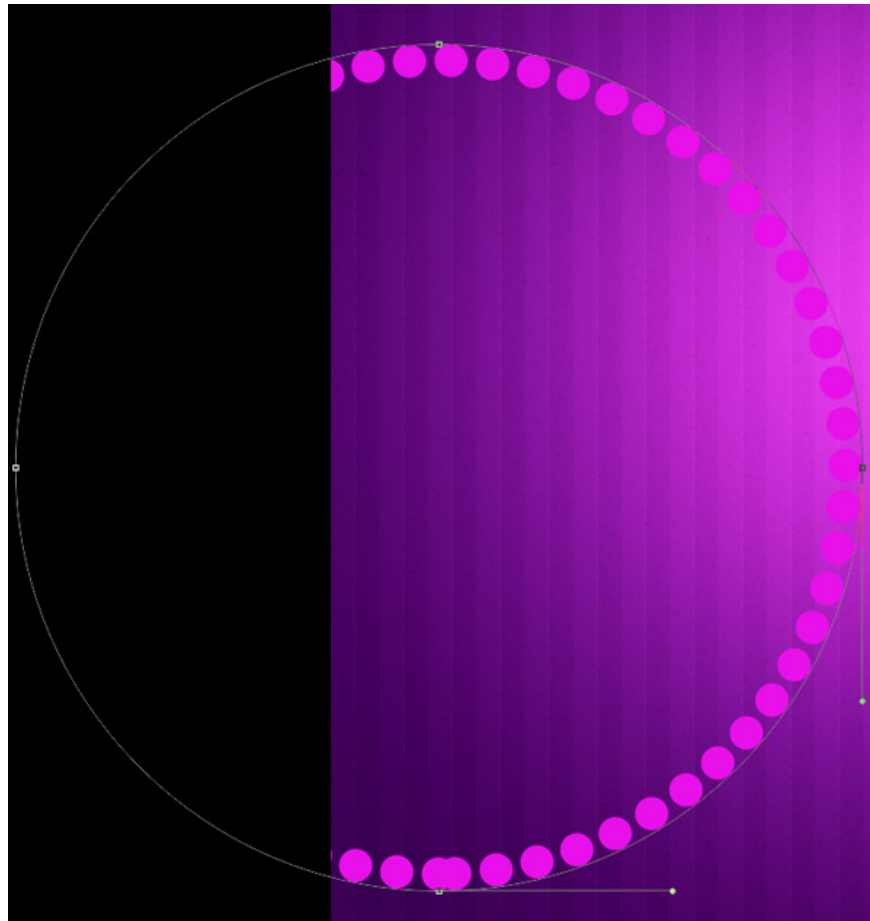
Use the **Ellipse Tool (U)** to draw a large circle.



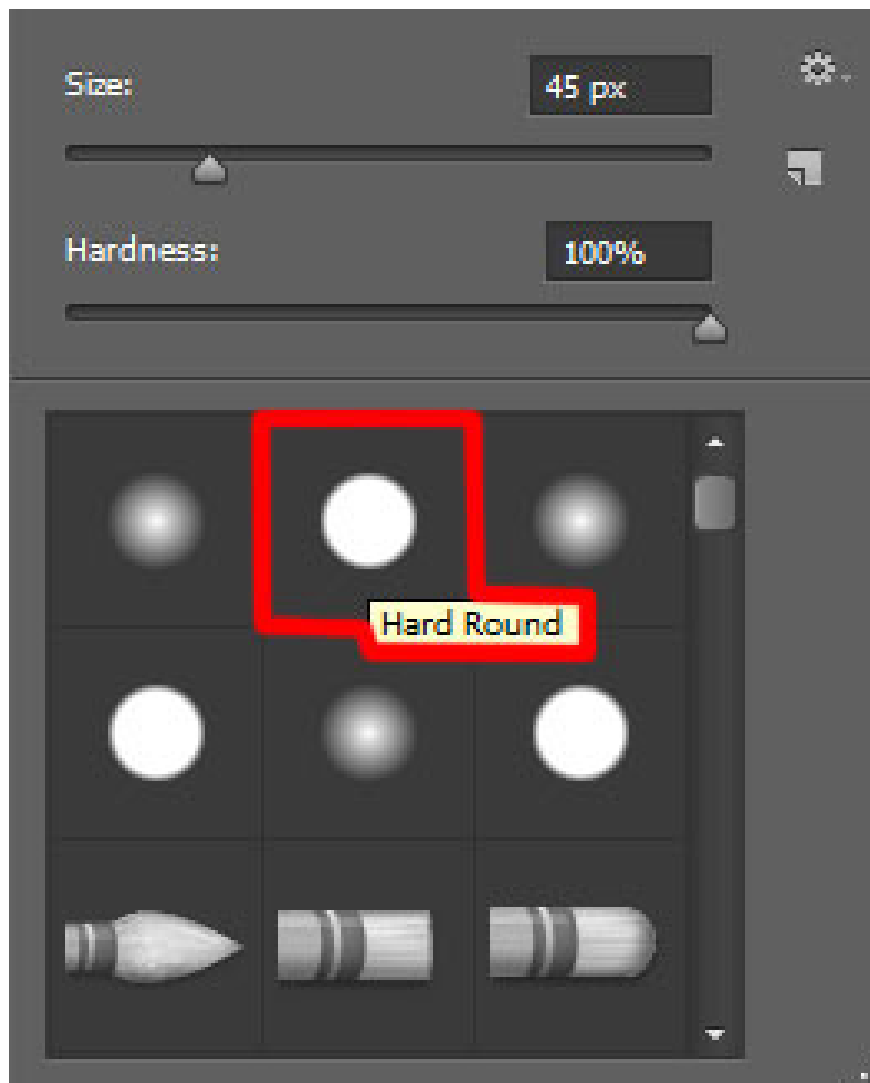
In **Adobe Photoshop CS6** , there is now a convenient **Stroke** option on the **Options Bar** when drawing a shape. Use the drop down menu to set the next **Stroke** option for the circle, set **Fill** to **None** , **Stroke** color to **#811EA** and **Stroke** type to **Dotted**.



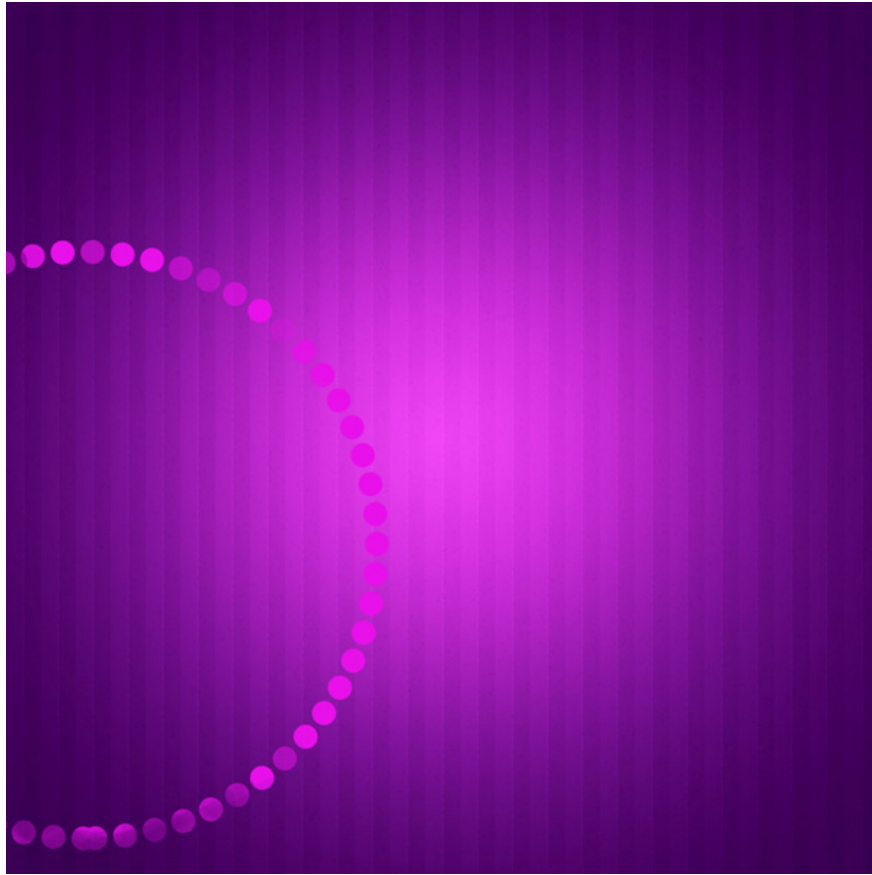
We have the next result:



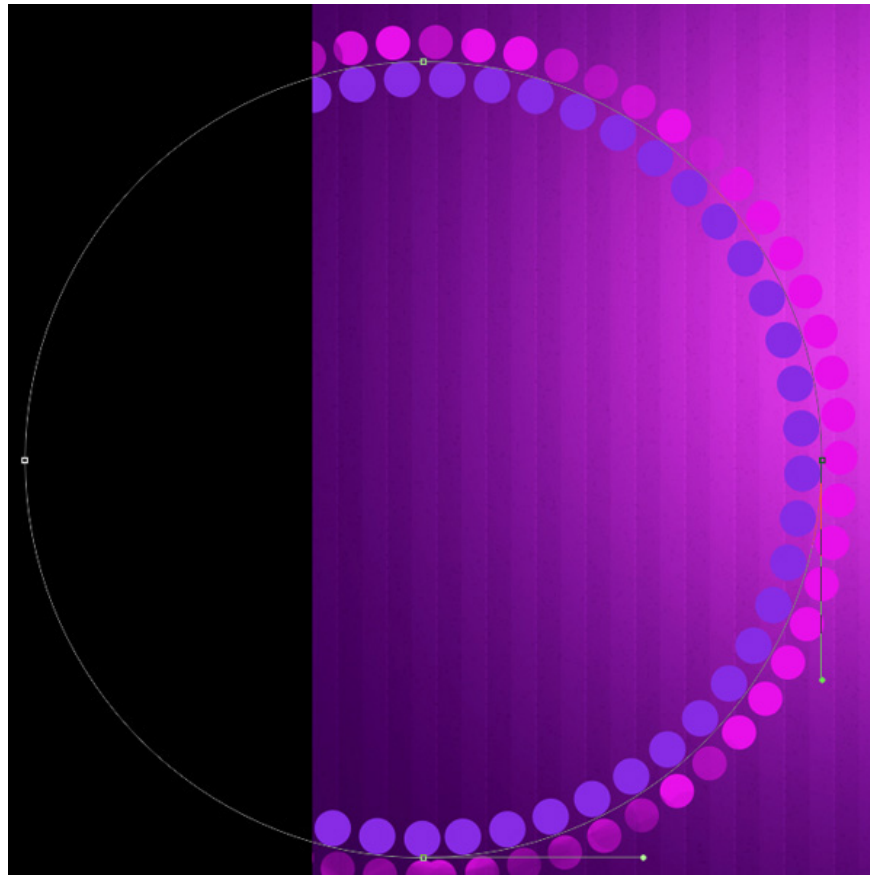
Insert a mask for this layer by selecting **Add layer mask** at the bottom of the **Layers** panel and selecting the **Hard Round** black brush (set the **Opacity** to **20%** in the **Options** bar).



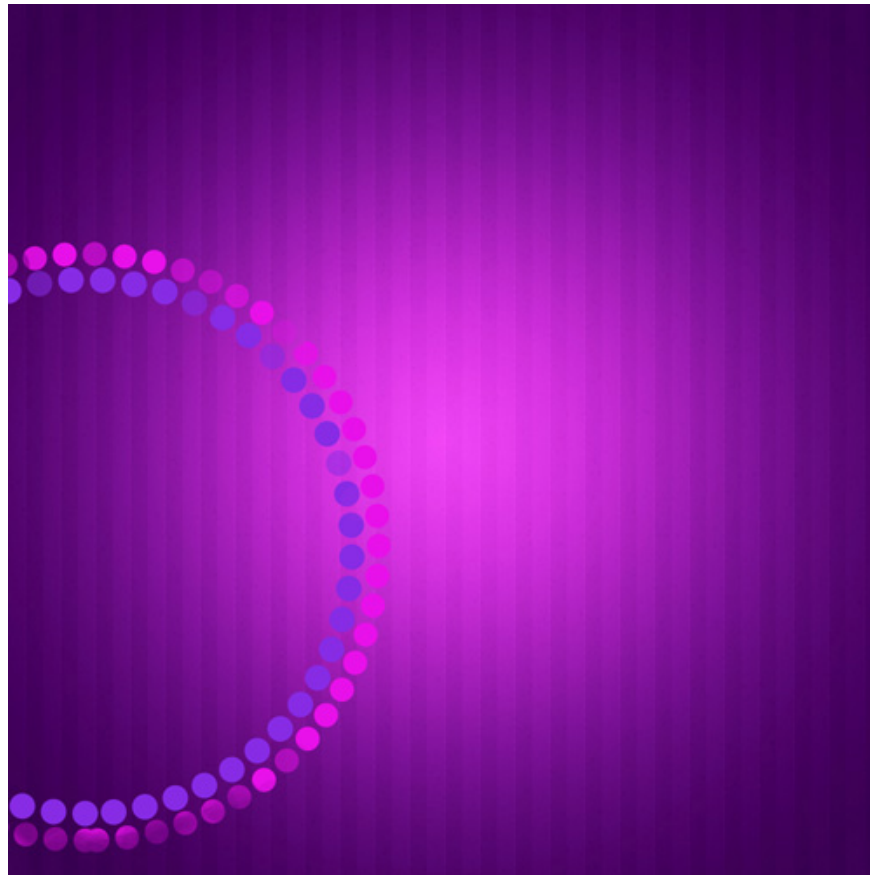
Paint in the mask using this brush to hide some circles:



Use the same **Ellipse Tool (U)** to draw the next circle and the same **Stroke** option ( **Stroke's** color is # **882CE5** ).



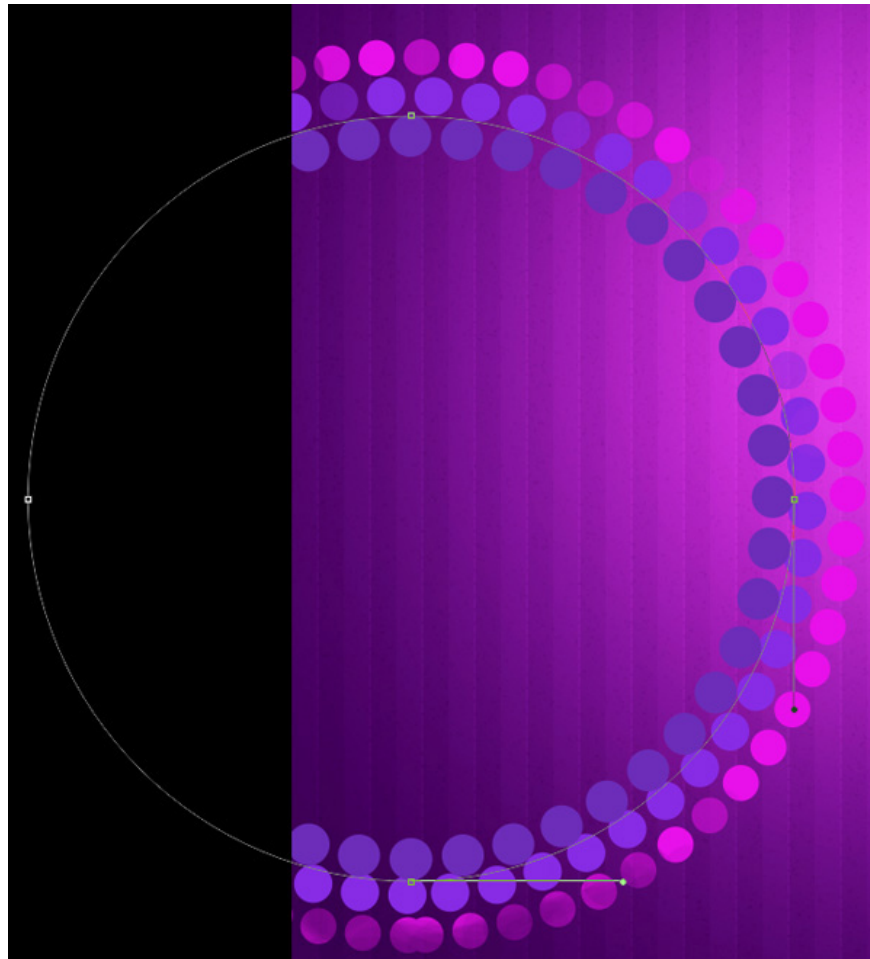
Insert a mask for this layer and hide some circles, using the same **Hard Round** brush.



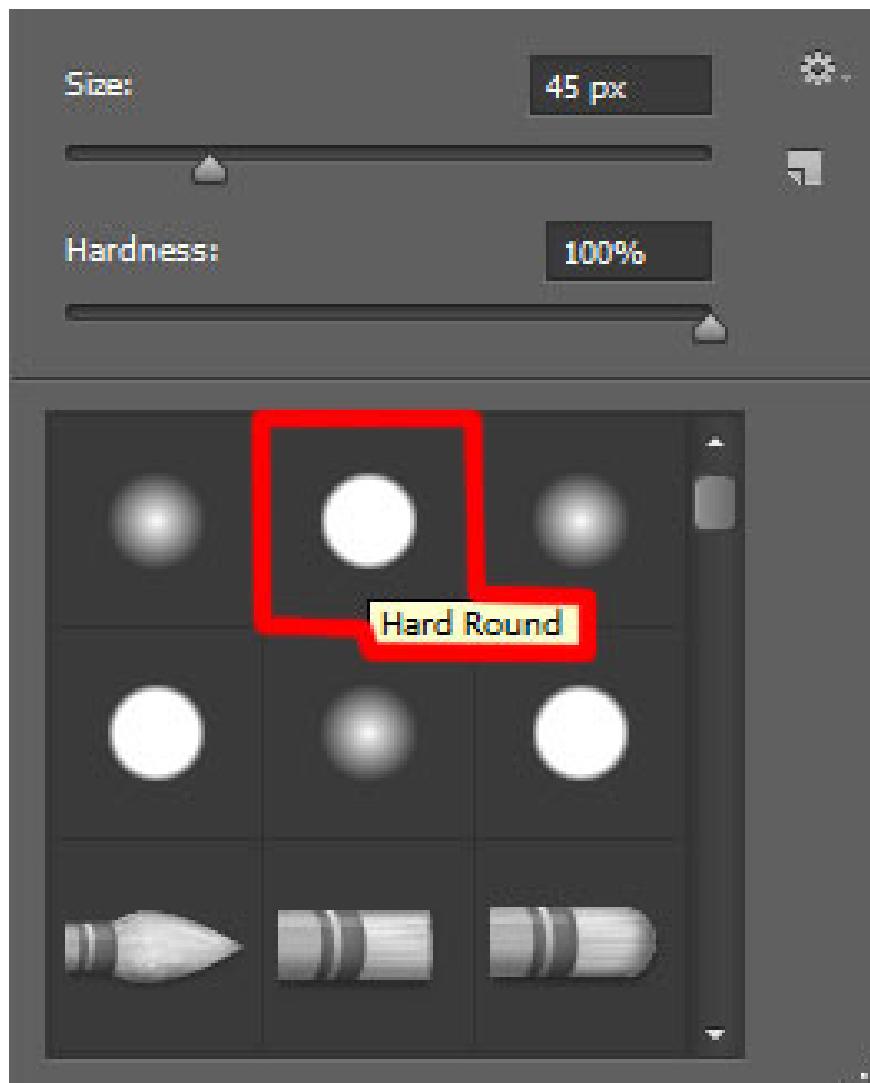
Next draw another circle using the **Ellipse Tool (U)** and set the next **Stroke** options in the **Options** bar :



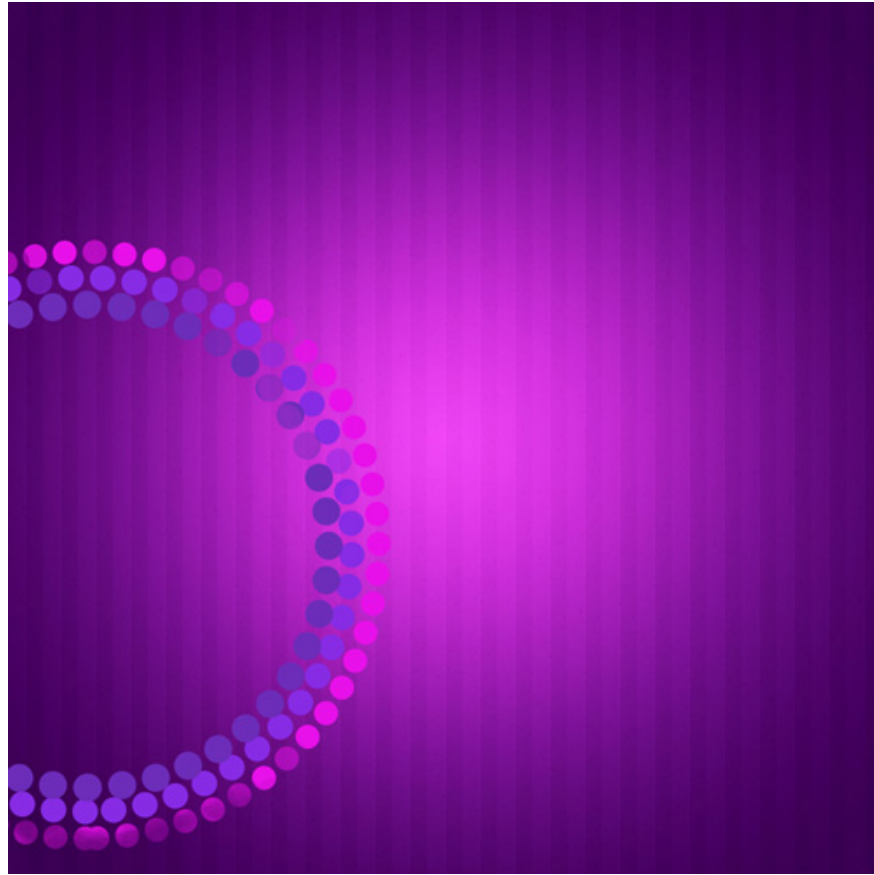
**Stroke** color is # **6D2DB9** . We have the next result:



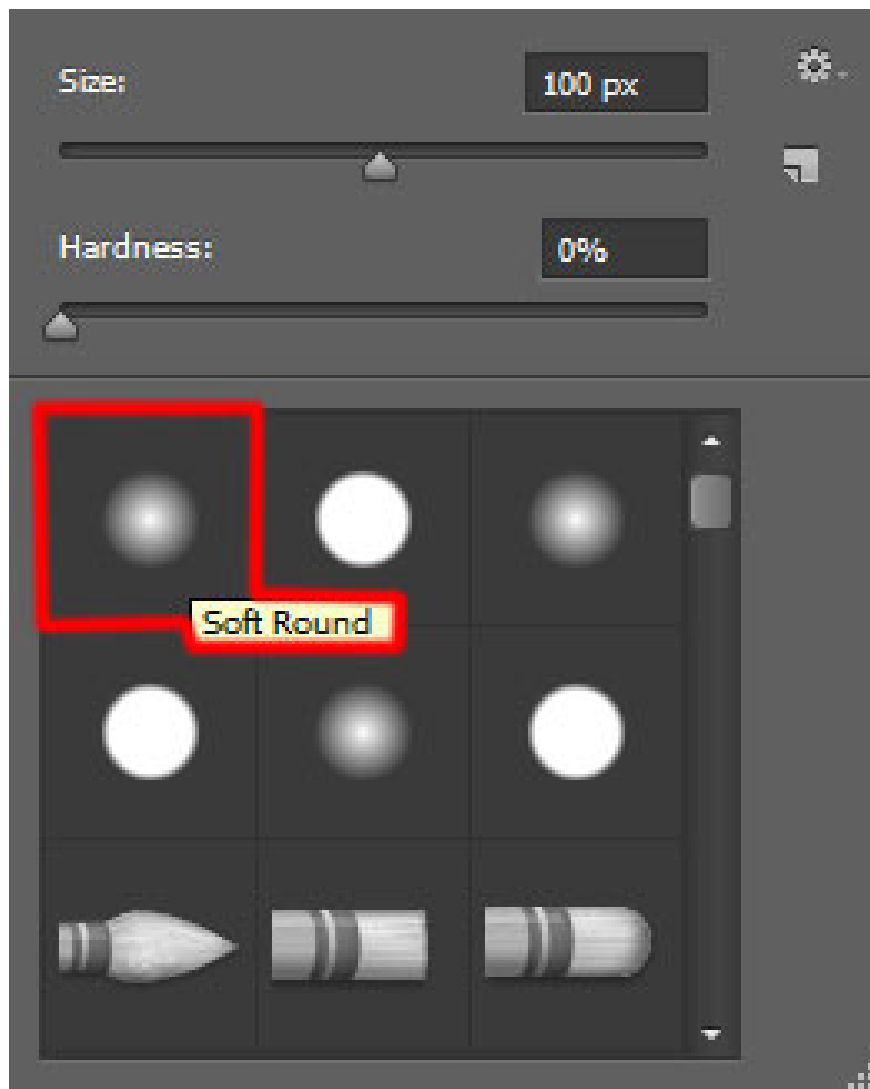
Insert a mask for this layer by selecting **Add layer mask** at the bottom of the **Layers** panel and selecting the **Hard Round** black brush (set the **Opacity** to **20%** in the **Options** bar).



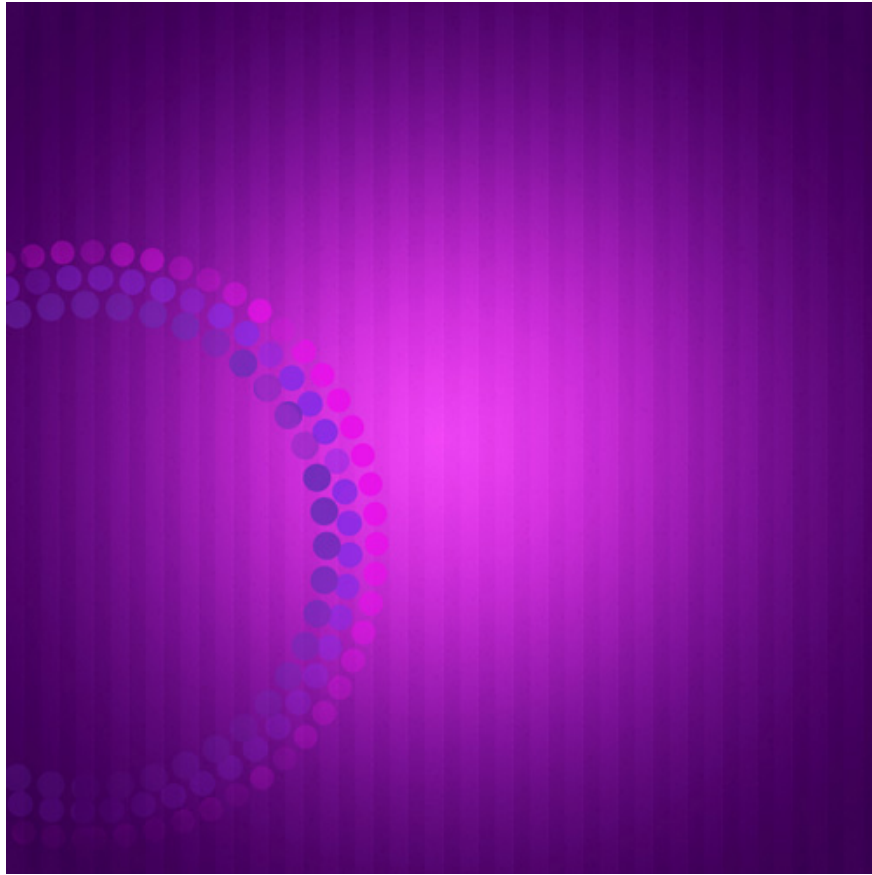
Paint in the mask using this brush to hide some circles.



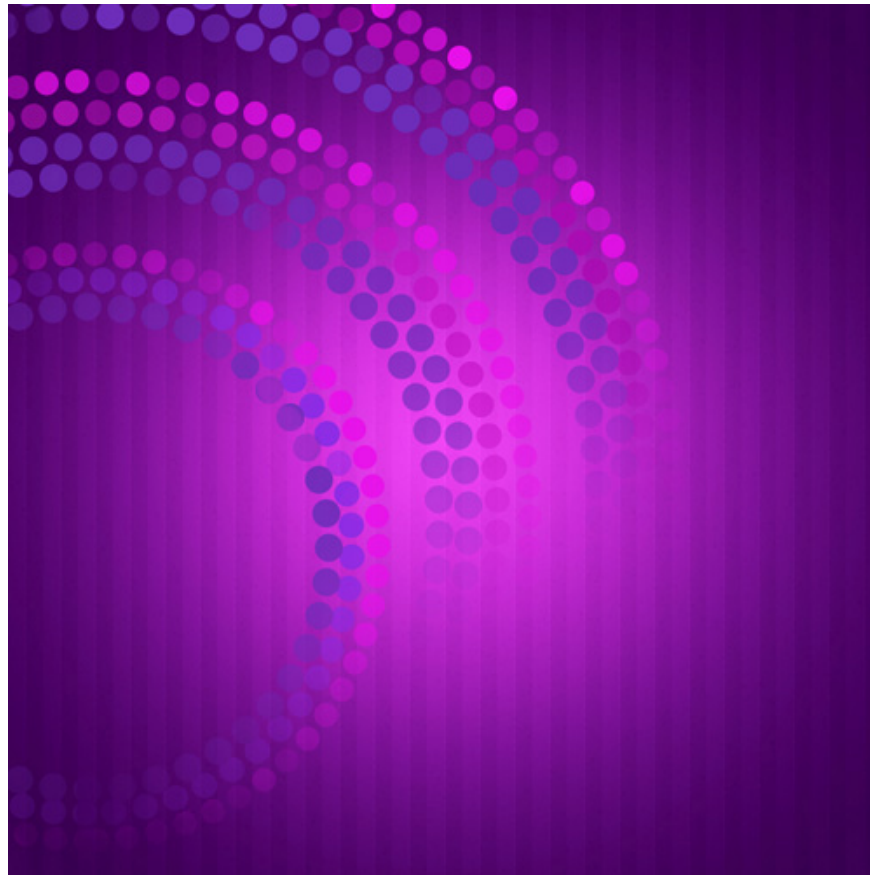
Group all the layers containing the circle into a group (press the **CTRL** button to select the layers and hold the left mouse button while dragging the selected layers into the **Create a new group** icon from the bottom part of the **Layers** panel). Insert the mask into the group and then select **Soft Round** brush with black color ( **Opacity** of this brush is **30%** ).



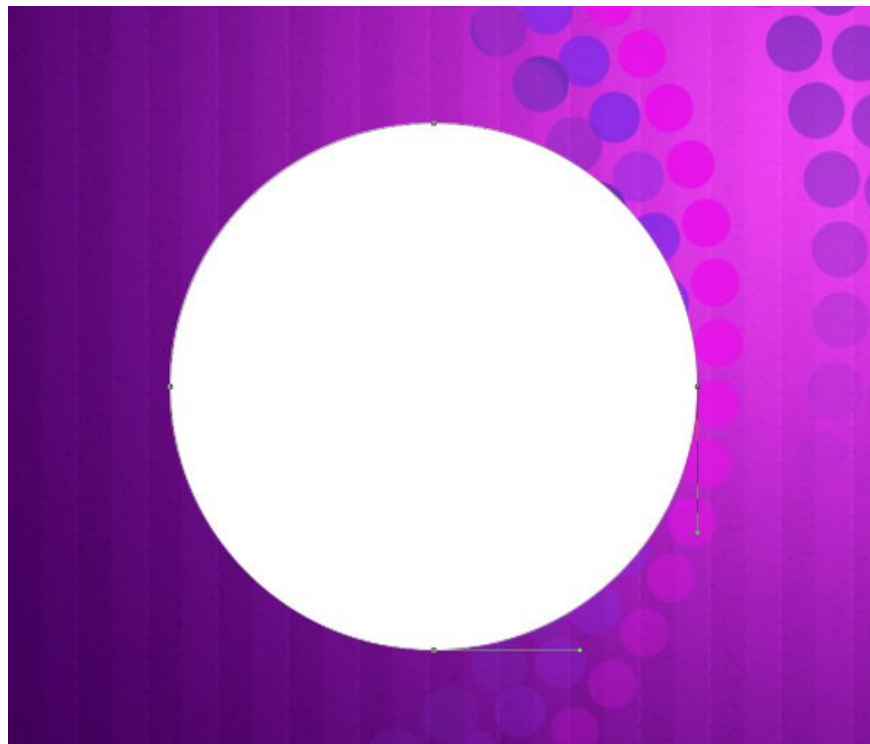
Paint in the mask using this brush to hide the circle as shown:



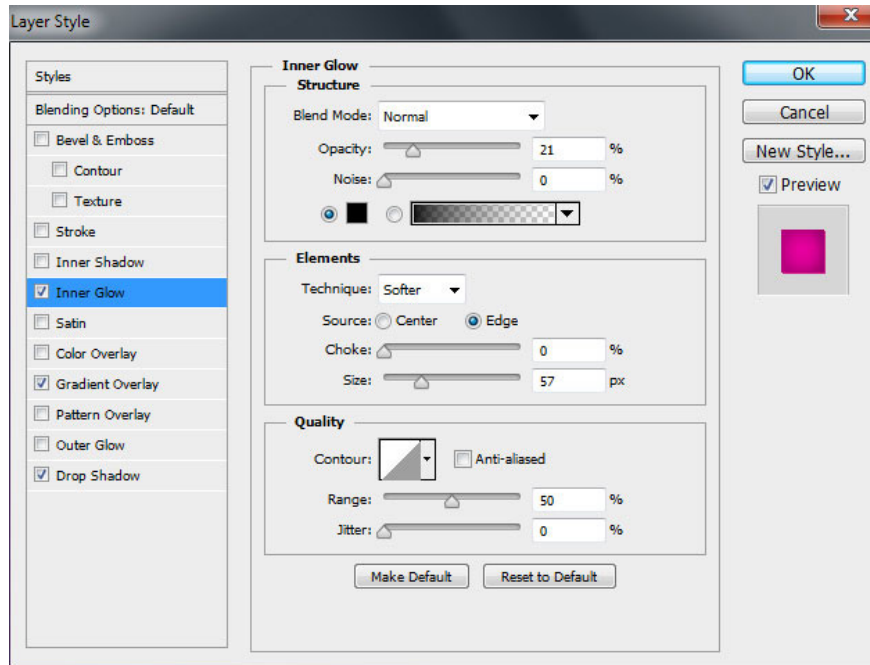
Similar to the above, we will draw two more circle groups. Insert the mask into the groups and hide the circle exactly as shown on the image using the same brush.



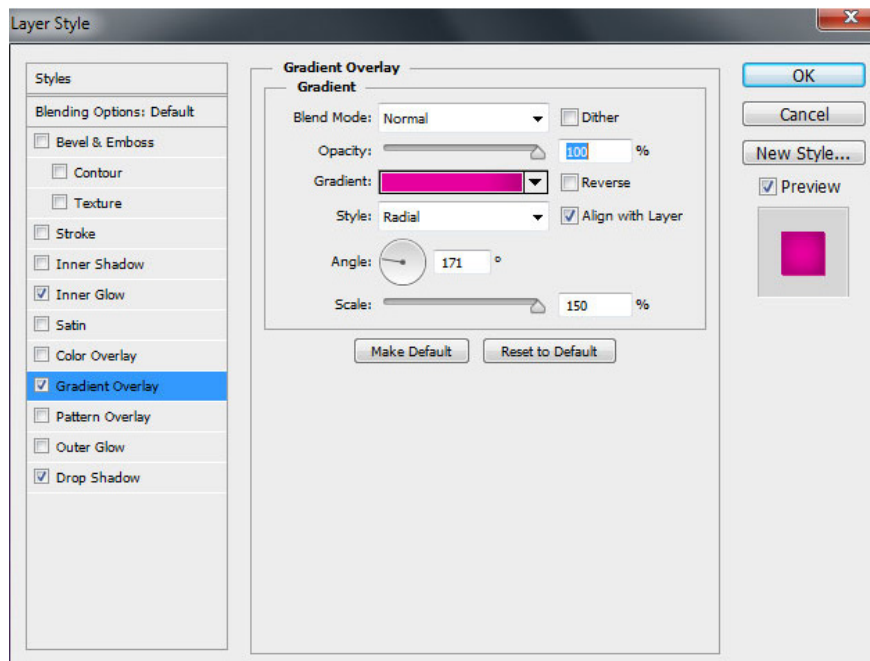
Use the **Ellipse Tool (U)** to draw a Christmas ball.



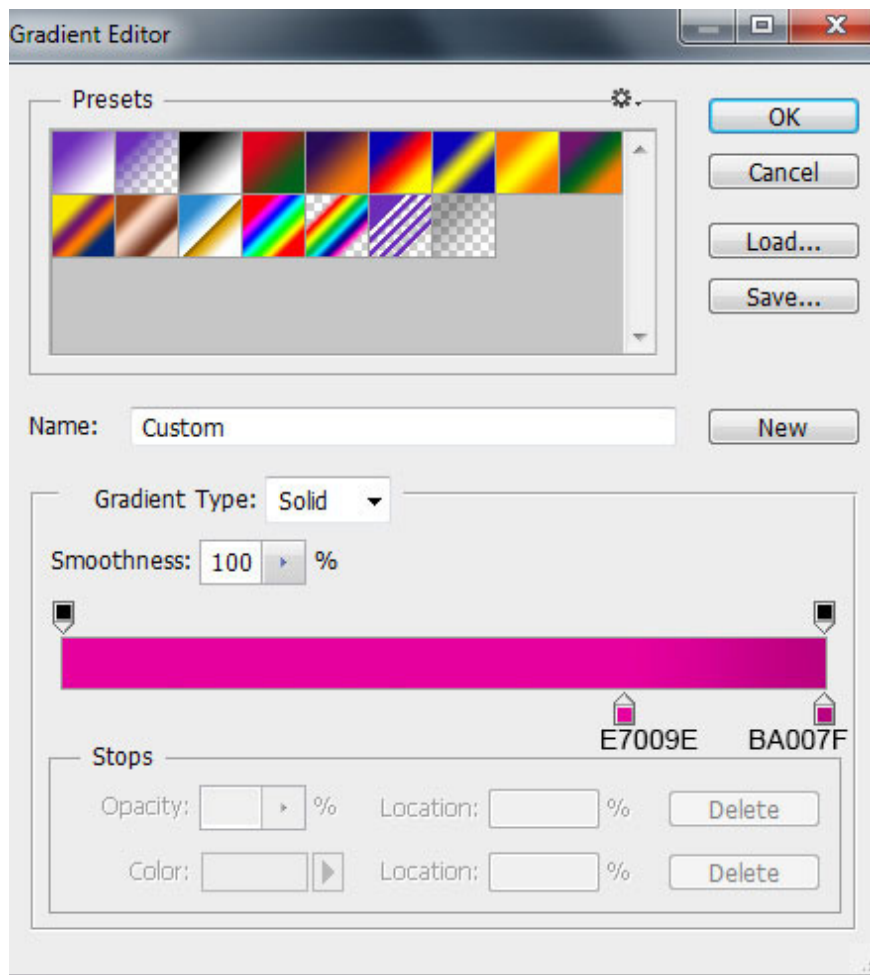
Click the icon **Add a layer style** from the bottom part of the **Layers** panel and select **Inner Glow** .



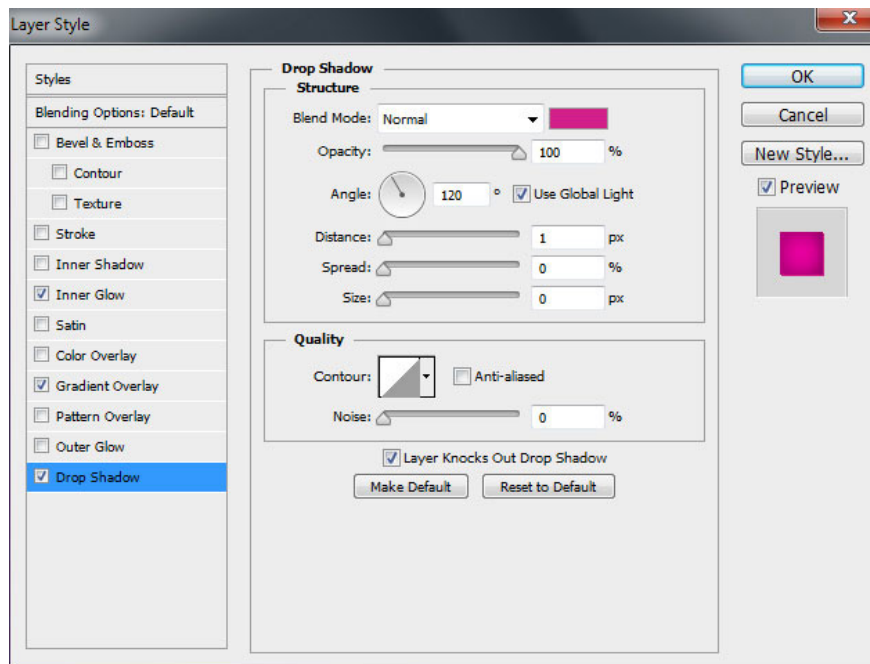
Select **Gradient Overlay** :



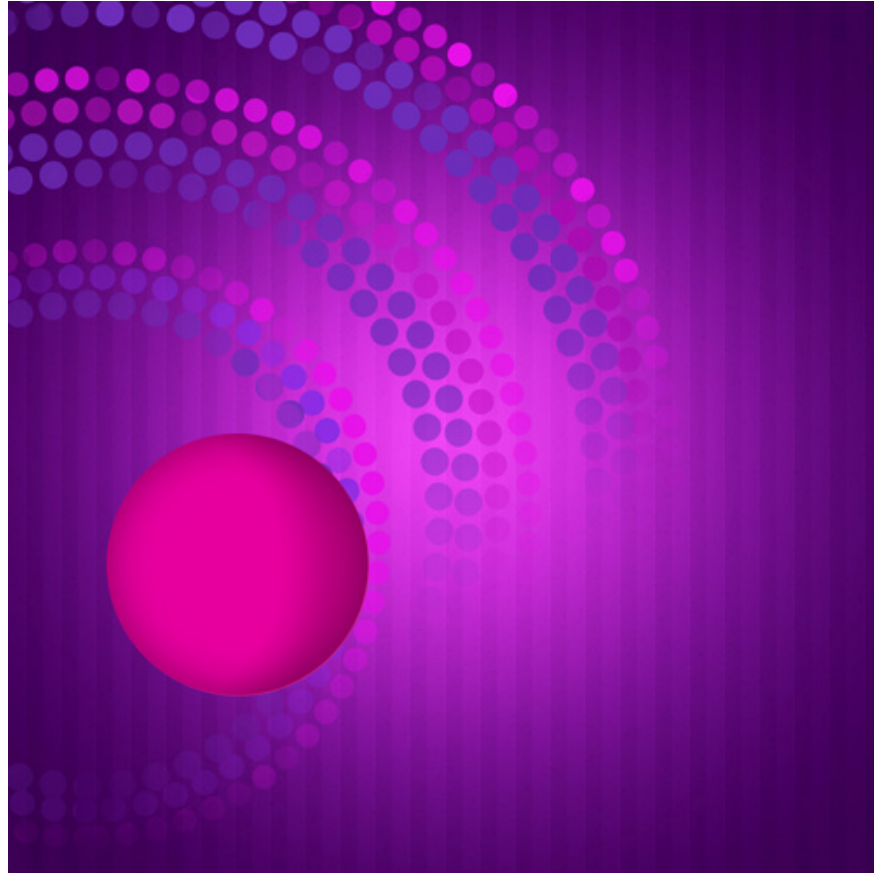
Click the color bar to open the **Gradient Editor** and set the color stops as shown. Click **OK** to close the **Gradient Editor** dialog box.



Select **Drop Shadow** :



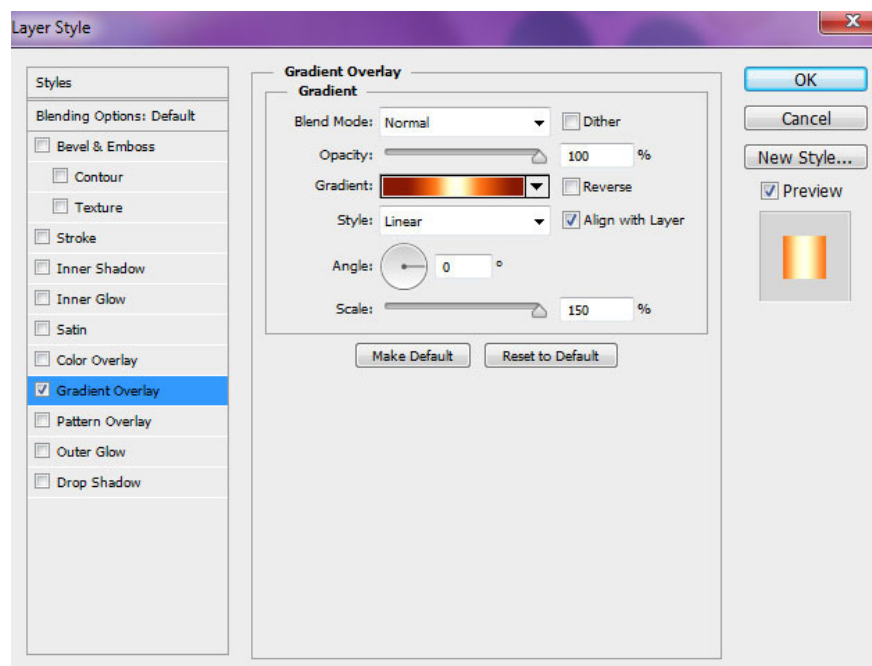
We have the next image:



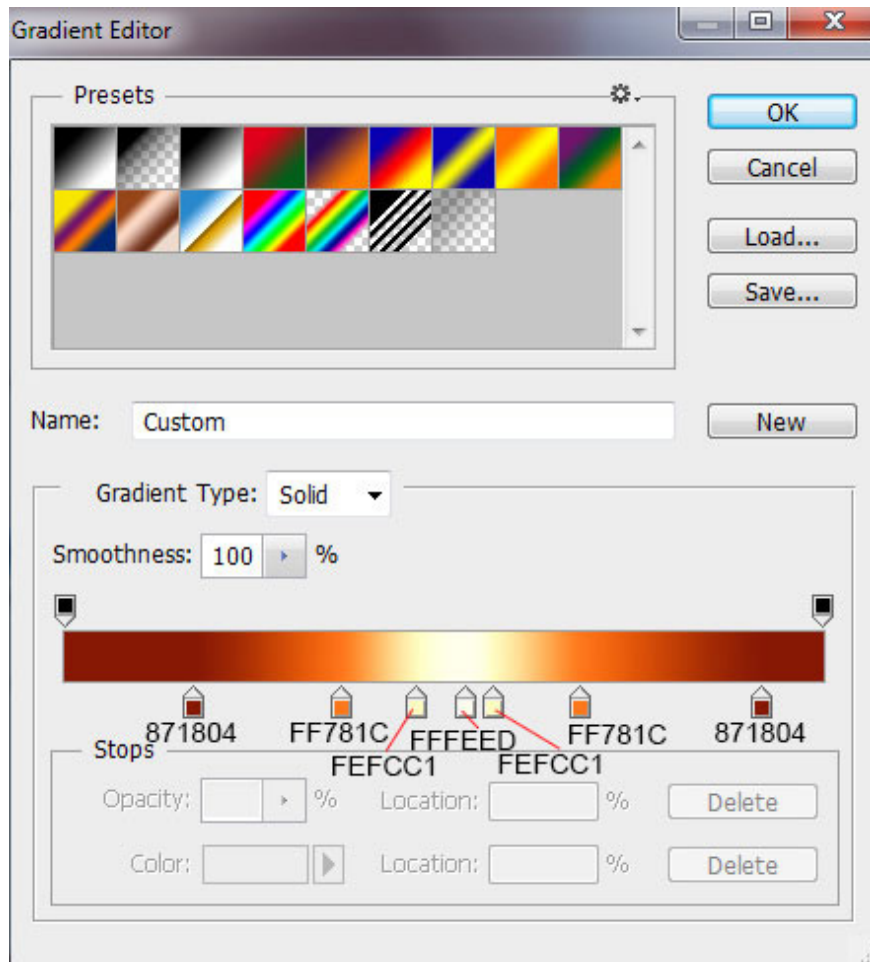
Next, we will draw the support for the ball using the **Rectangle Tool (U)** to draw the next rectangle, this layer must be below the layer of the ball.



Click the **Add a layer style** icon from the bottom part of the **Layers** panel and select **Gradient Overlay** .



Click the color bar to open the **Gradient Editor** and set the color stops as shown. Click **OK** to close the **Gradient Editor** dialog box.



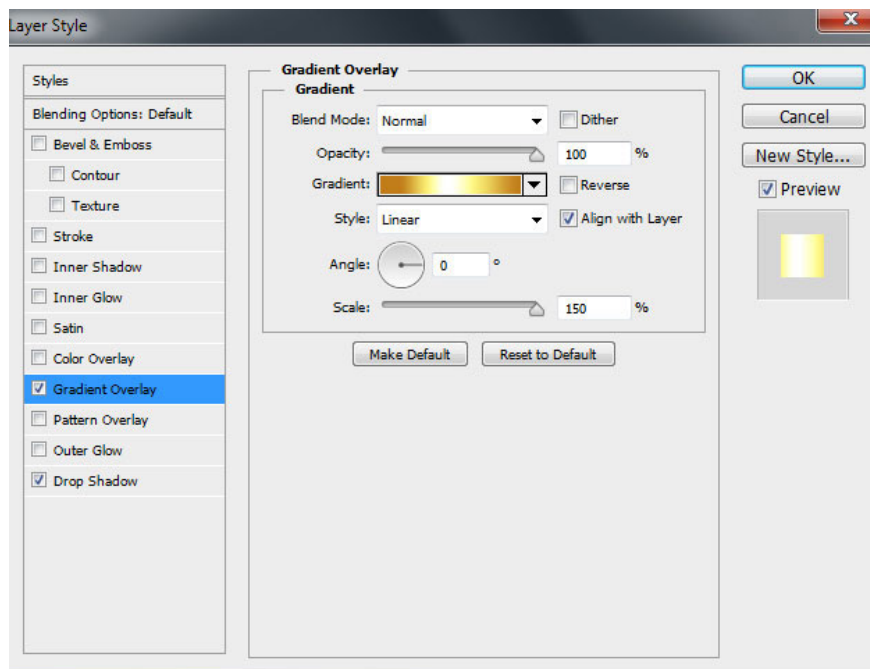
We have the next result:



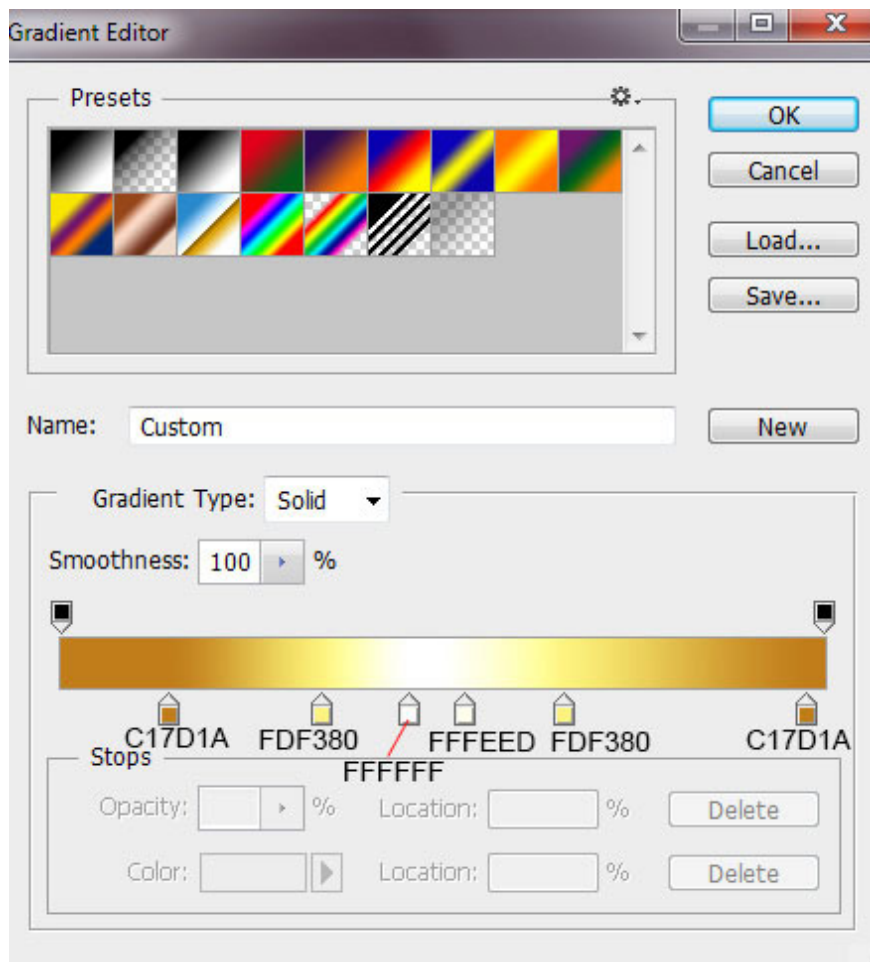
Use the same tool to represent a horizontal line above the ball button.



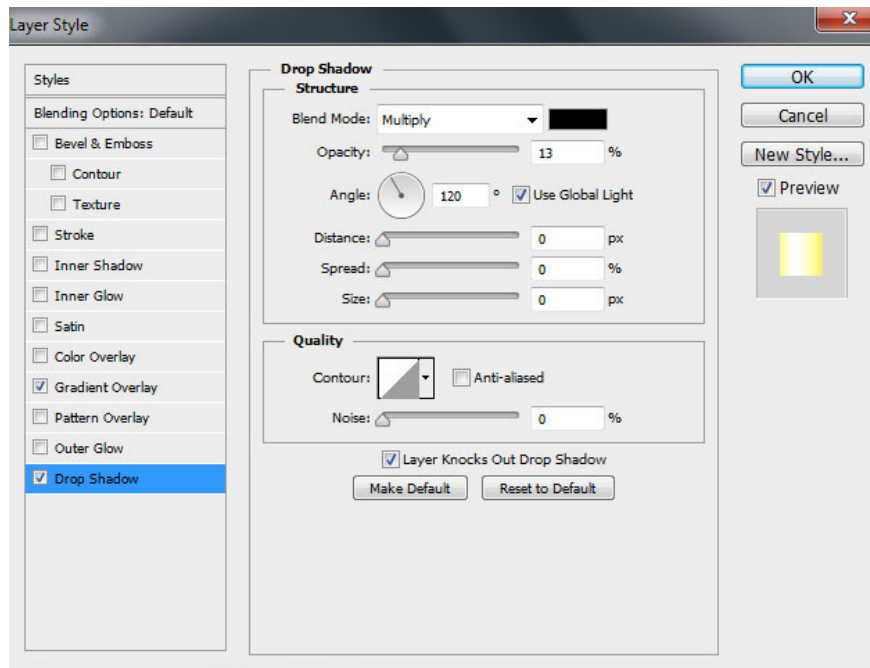
Click the **Add a layer style** icon from the bottom part of the **Layers** panel and select **Gradient Overlay** .



Click the color bar to open the **Gradient Editor** and set the color stops as shown. Click **OK** to close the **Gradient Editor** dialog box .



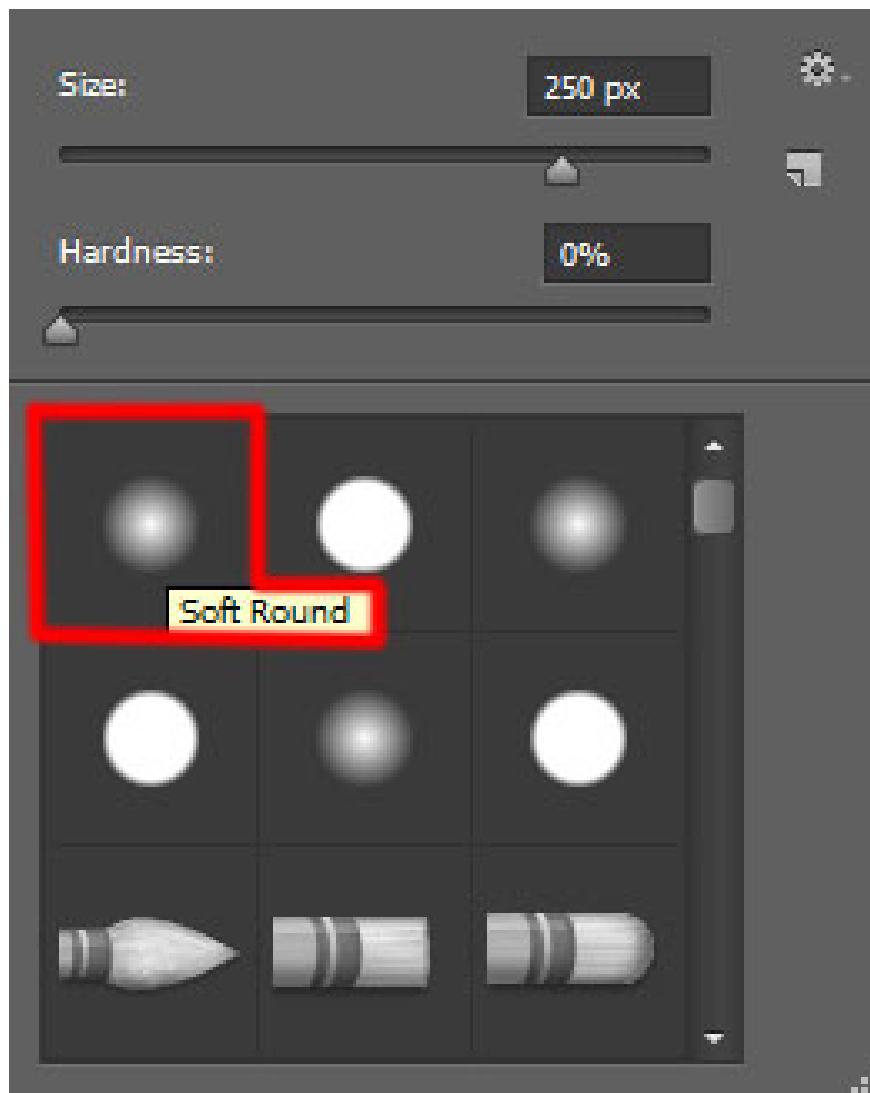
Add **Drop Shadow** :



We have the next result:



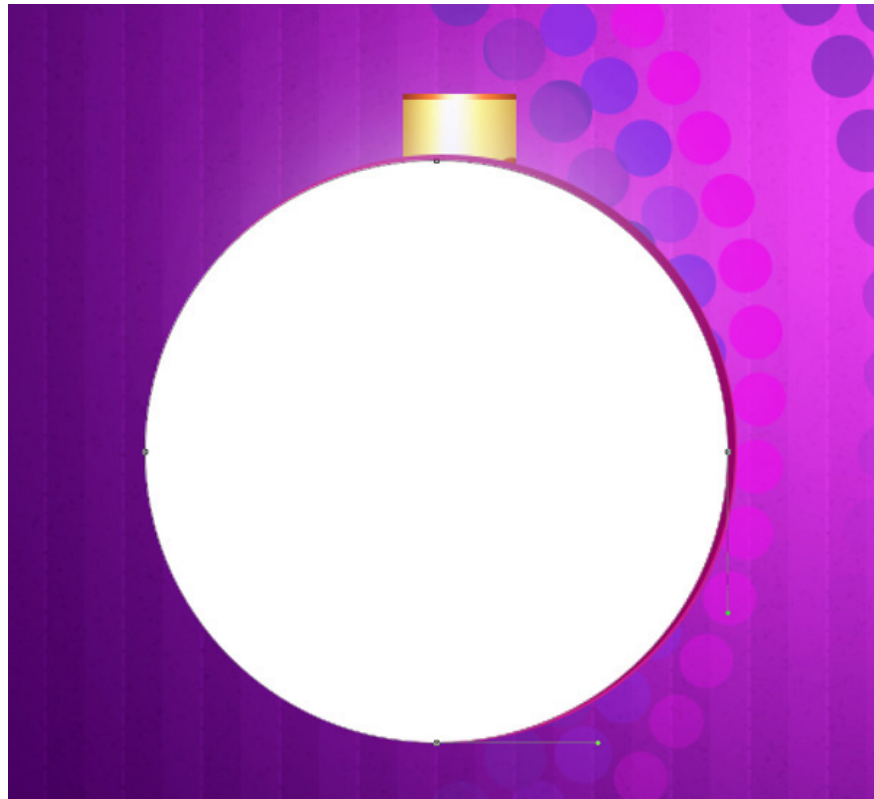
Create a new layer and apply a **Soft Round** white brush ( **Opacity** of this brush is **15%** ).



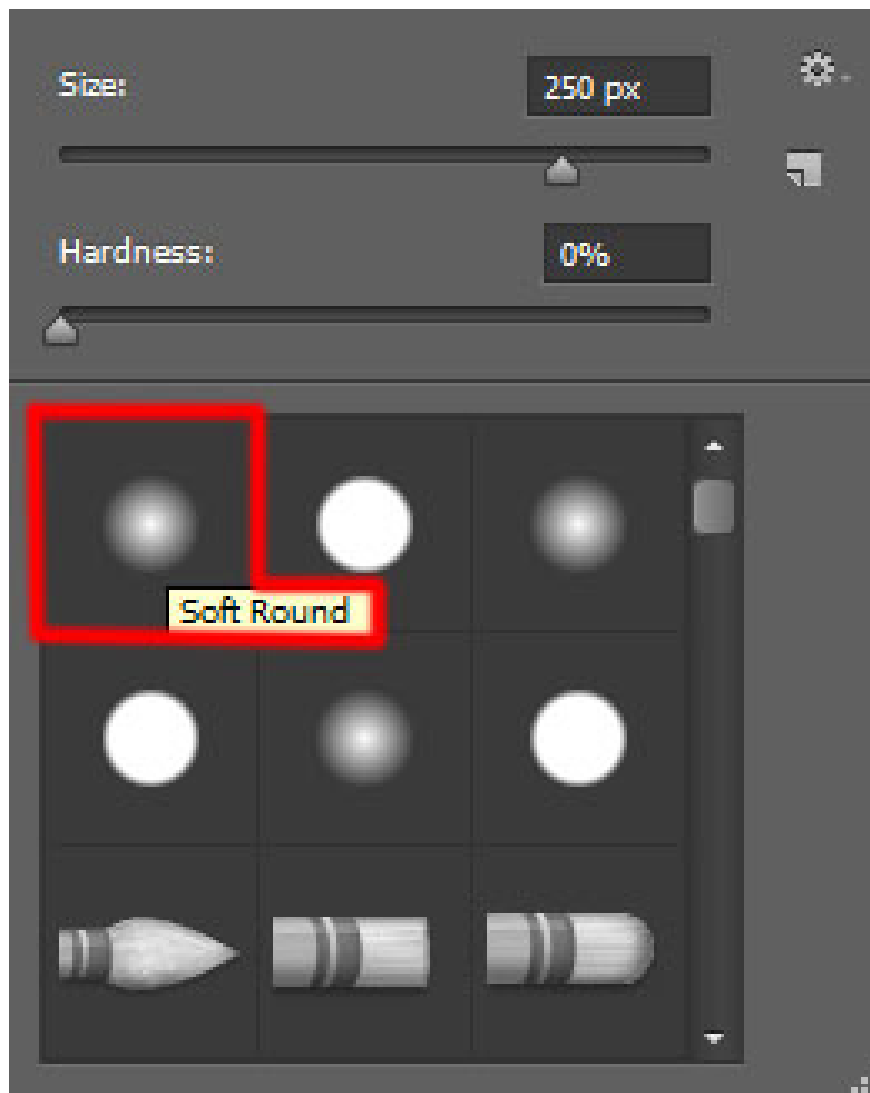
Use this brush to show the shine effect (shining effect) for the top part of the Christmas ball.



Next, we will draw a highlight on the ball in the bottom left, select the **Ellipse Tool (U)** draw the next circle.



Insert the mask into this layer by selecting **Add layer mask** at the bottom of the **Layers** panel. Press **Ctrl + I** to invert the color, select **Soft Round** white brush.



Paint in the mask using this brush to hide the highlight.



Next, download a set of custom snowflakes named *Decorative Snowflakes Shapes*.



Select the **Custom Shape Tool (U)** in the **Tools** bar and Click **Shape** in the **Options** bar to open the selection menu. Find the decorative snowflake shape at the bottom of the menu and then double-click the thumbnail of the shape to select it. Click and drag to draw a snowflake shape as shown.



Here, we will draw a circle around the finished snowflake using the **Ellipse Tool (U)** .



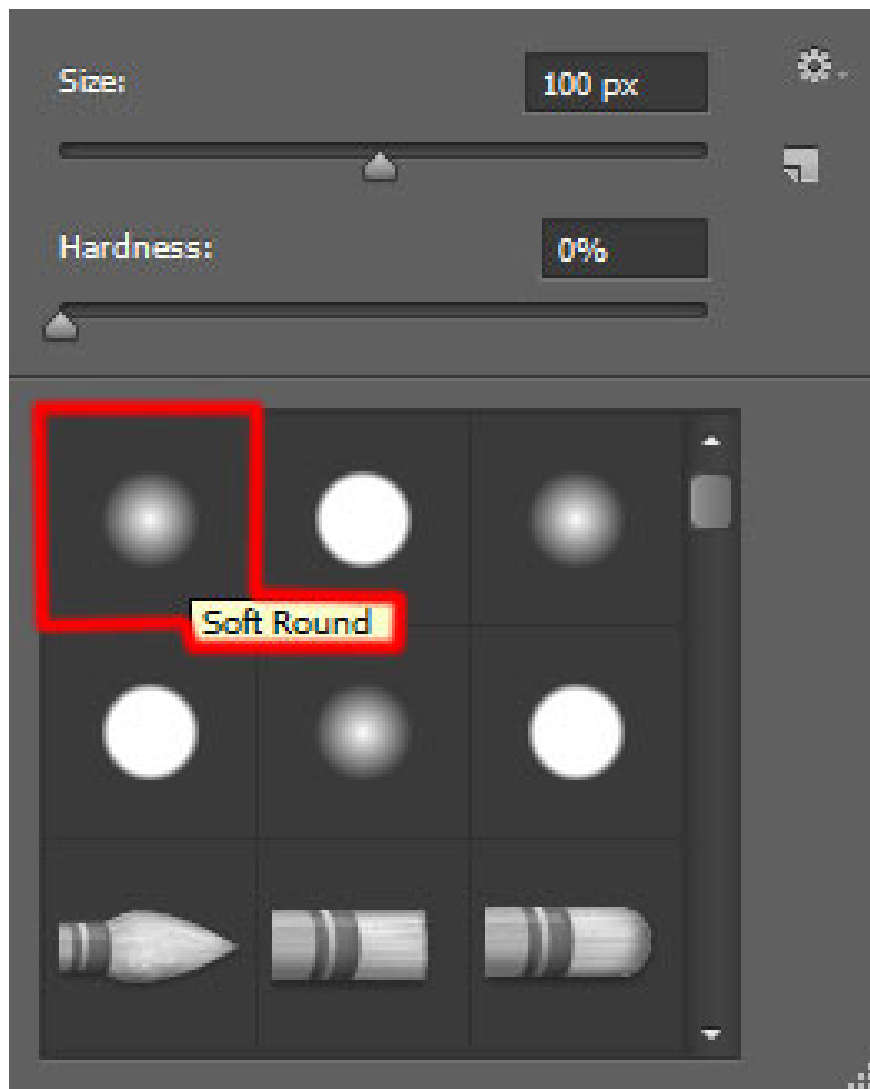
In the **Options** bar , select the options for **Stroke** with **None Fill** , **Stroke color** White and **Stroke** type is **Solid Line** as shown.



Now we will highlight the top part of the Christmas ball, using the **Ellipse Tool (U)** to draw the next rhombus.



Insert the mask on this layer by choosing **Add layer mask** at the bottom of the **Layers** panel and select the **Soft Round** black brush (set the **Opacity** to **60%** in the **Options** bar).



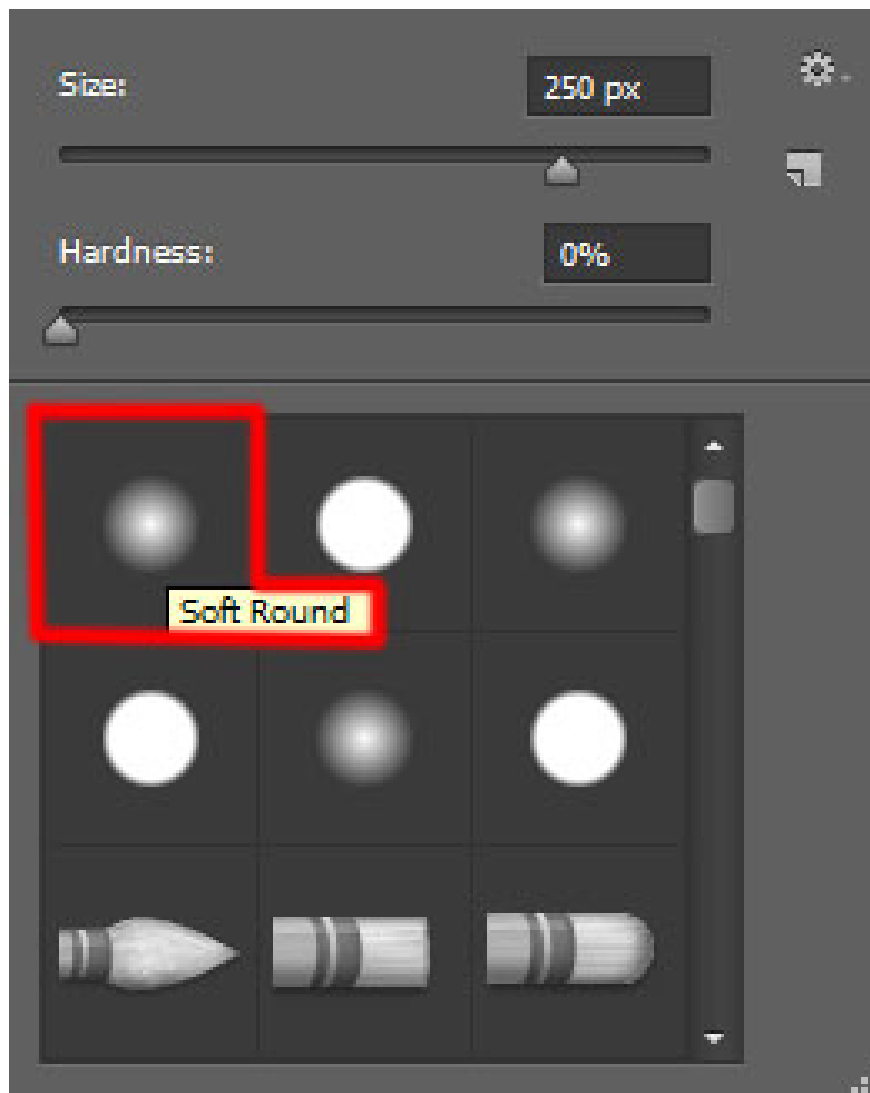
Paint in the mask using this brush to make the highlight look like the next image.



Then reuse the **Ellipse Tool (U)** to draw a prominent element on the right.



Insert the mask into this layer by selecting **Add layer mask** at the bottom of the **Layers** panel. Press **Ctrl + I** to invert color and select **Soft Round** white brush (set **Opacity** to **40%** in **Options** bar).



Paint in the mask using this brush to hide the highlights like the image below.



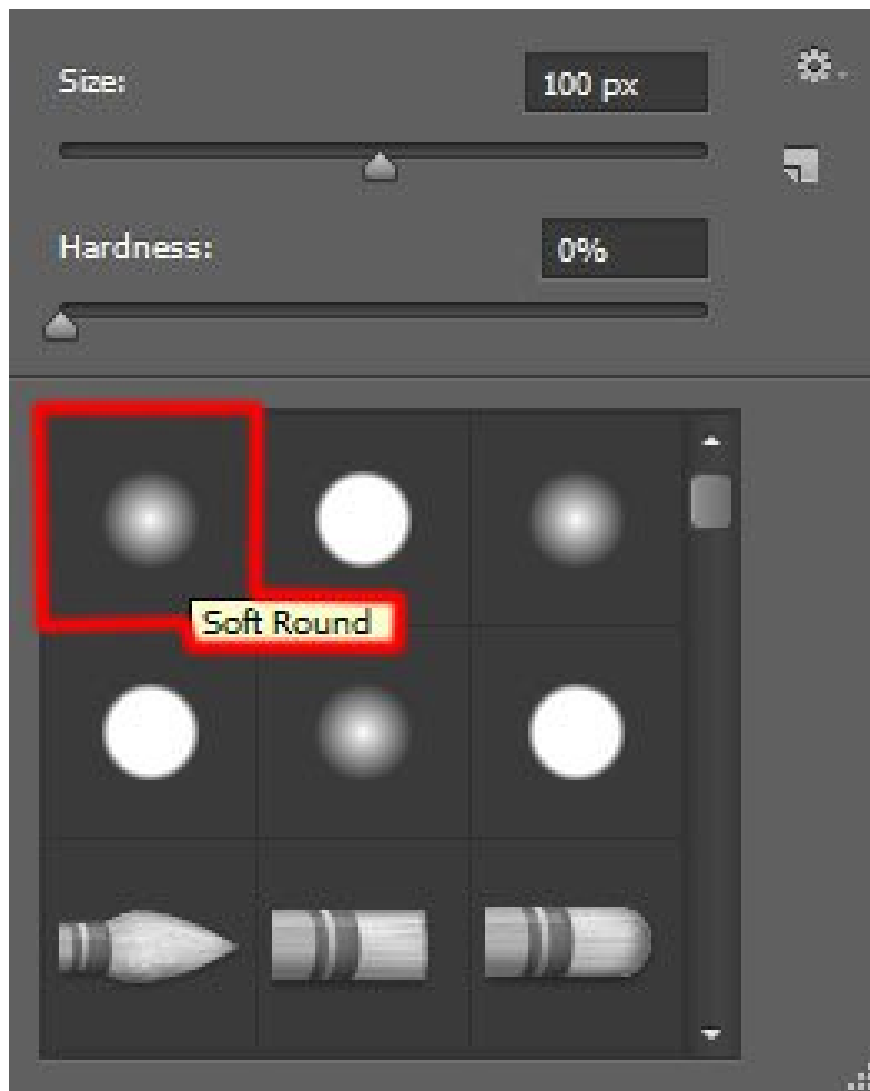
Select the **Custom Shape Tool (U)** in the **Tools** bar, in the **Options** bar click on **Shape** to open the selection menu. Find the snowflake photo set that has been downloaded and draw the snowflakes on the Christmas ball to make it look like the picture below.



Create two copies of the layer containing snowflakes at the top right. Now we will highlight another point, use in the **Ellipse Tool (U)** . First draw a circle using the **Ellipse Tool (U)** , then hold the **Alt** button or select **Subtract from shape area (-)** from the **Options** bar and draw two ellipses using the **Ellipse Tool (U)** to cut the circle exactly as shown in the picture below:



Insert a mask for this layer by selecting **Add layer mask** at the bottom of the **Layers** panel and selecting the **Soft Round** black brush (set the **Opacity** to **60%** in the **Options** bar).



Paint in the mask using this brush to hide the highlighted part the same way from below:



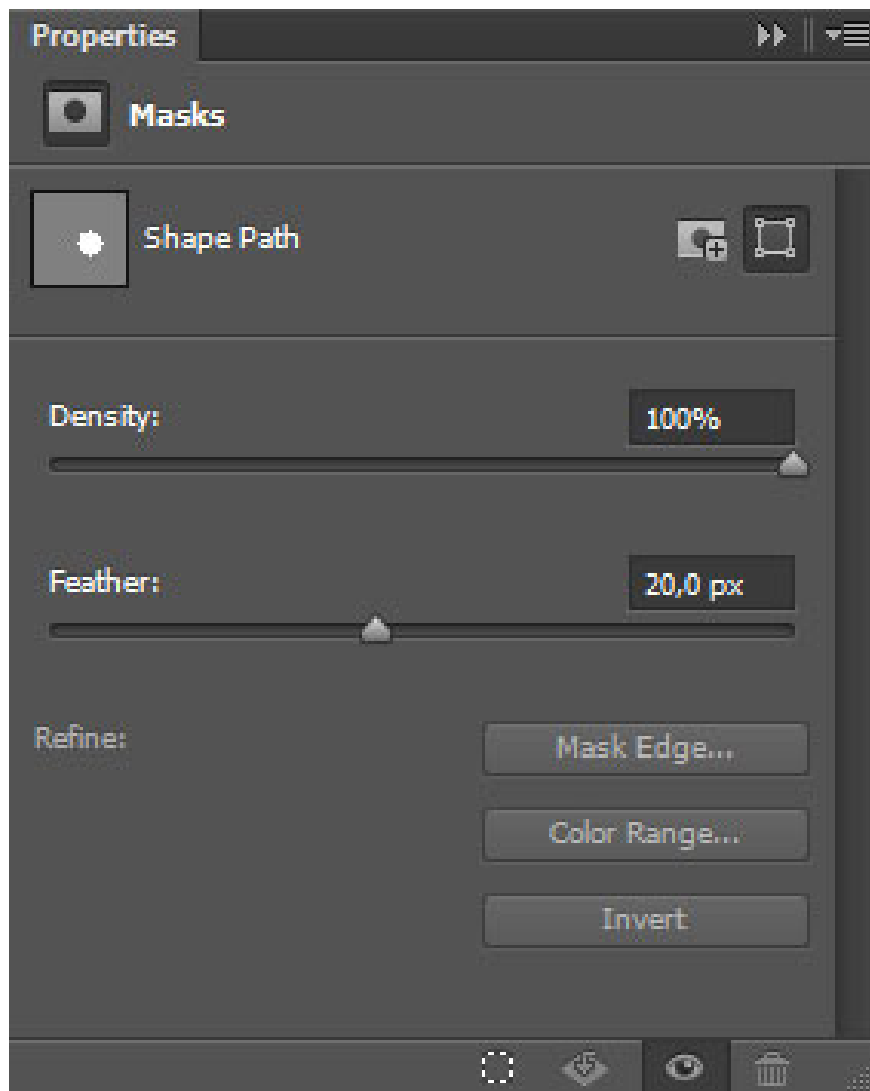
Set the **blending mode** for this layer to **Soft Light** .



Now create a shadow for the Christmas ball, use the **Ellipse Tool (U)** to draw a circle with the color # **072730** . This layer must be under the layer of the ball.



Access the **Mask Panel** and set the **Feather to 20px** (in case you can find the **Mask Panel** on the right, just activate it on the **Windows > Masks** main menu).



Set **Fill** to **80%** for this layer.



Now show off the next shadow layer, use the same **Ellipse Tool (U)** and color # **A0060** . Mask options are similar to previous examples. Put this layer on the previous layer but lower the layer of the ball.



Set **Fill** to **80%** for this layer and change the **Blending mode** to **Color** .



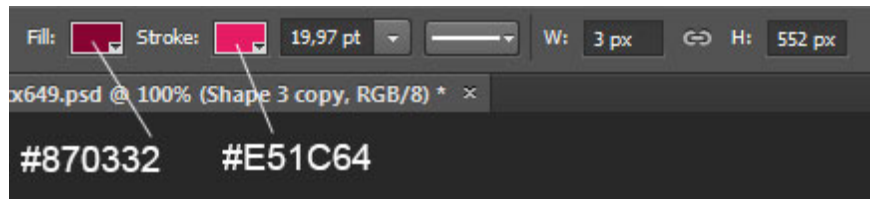
Combine these groups into one and make a copy of the group and choose the **Free Transform (Ctrl + T)** command , you can enlarge the size of the copy and place them in the same way from below:



Next, we'll draw the strings for the Christmas balls, use the **Line Tool (U)** and set the **Weight** to **3px** in the **Options** bar. The layer containing the strings will be below the ball's layer.



Colors for **Fill** and **Stroke** :



We have the next result:



Select the **Ellipse Tool (U)** to draw a small circle of color # **F894FB** . Put this layer under the ball layer.



Set **Fill** to **52%** for this layer.



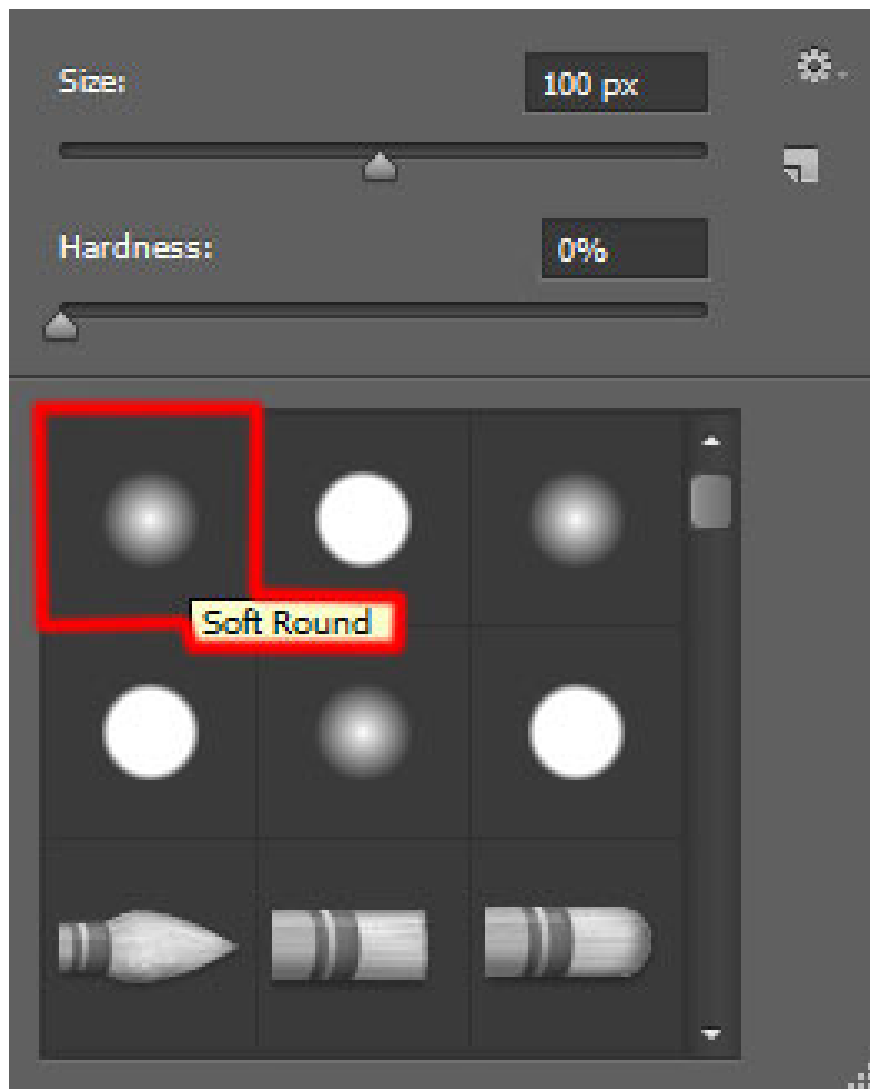
Now draw many small circles with the same color but different diameter and **Fill** values. Put these layers under layers containing Christmas balls and rope layers.



Using the same tool, we will draw three white circles, this layer must be mixed with layers containing pink circles, placing them under the ball layer.



Insert the mask into each layer containing the white circle by choosing **Add layer mask** to the bottom part of the **Layers** panel and select the **Soft Round** black brush (set **Opacity** to **40%** in the **Options** bar).



Paint in the mask using this brush to hide the white circles exactly the same way indicated in the image.



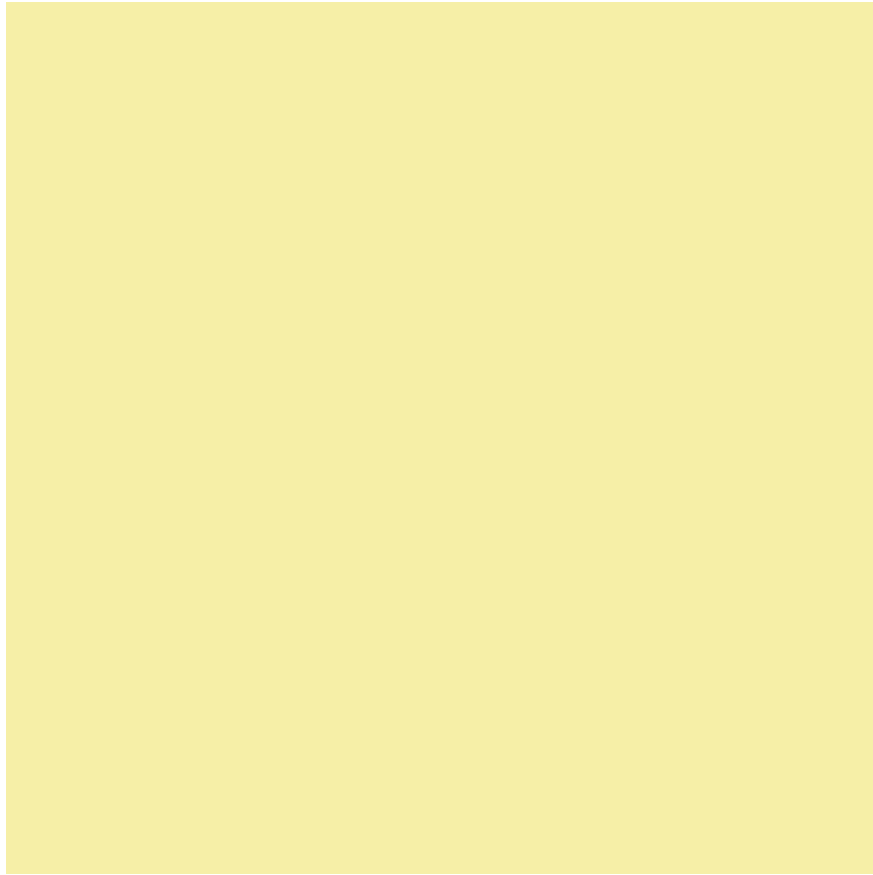
Paint the background in its upper left part. This time create a new layer and apply a **Soft Round** white brush ( **Opacity** of the brush is **20%** ), like in the previous example.



Set the **Blending mode** for this layer to **Overlay** .



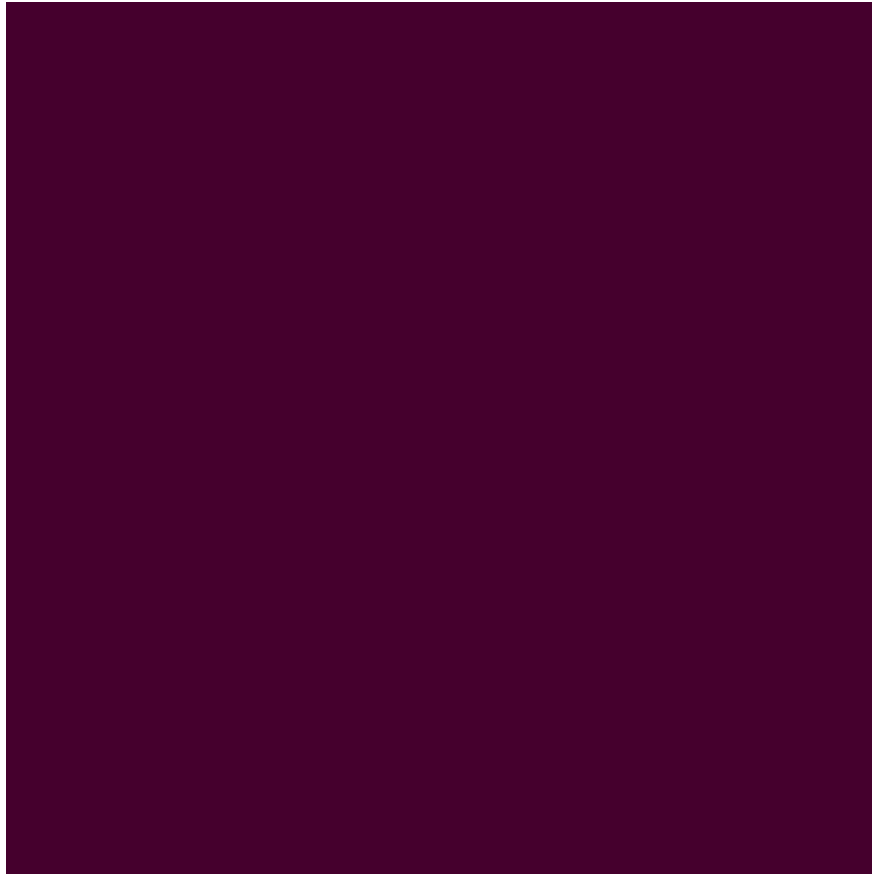
Create a new layer and select the **Paint Bucket Tool (G)** to overlay the color # **F5F0A7**.



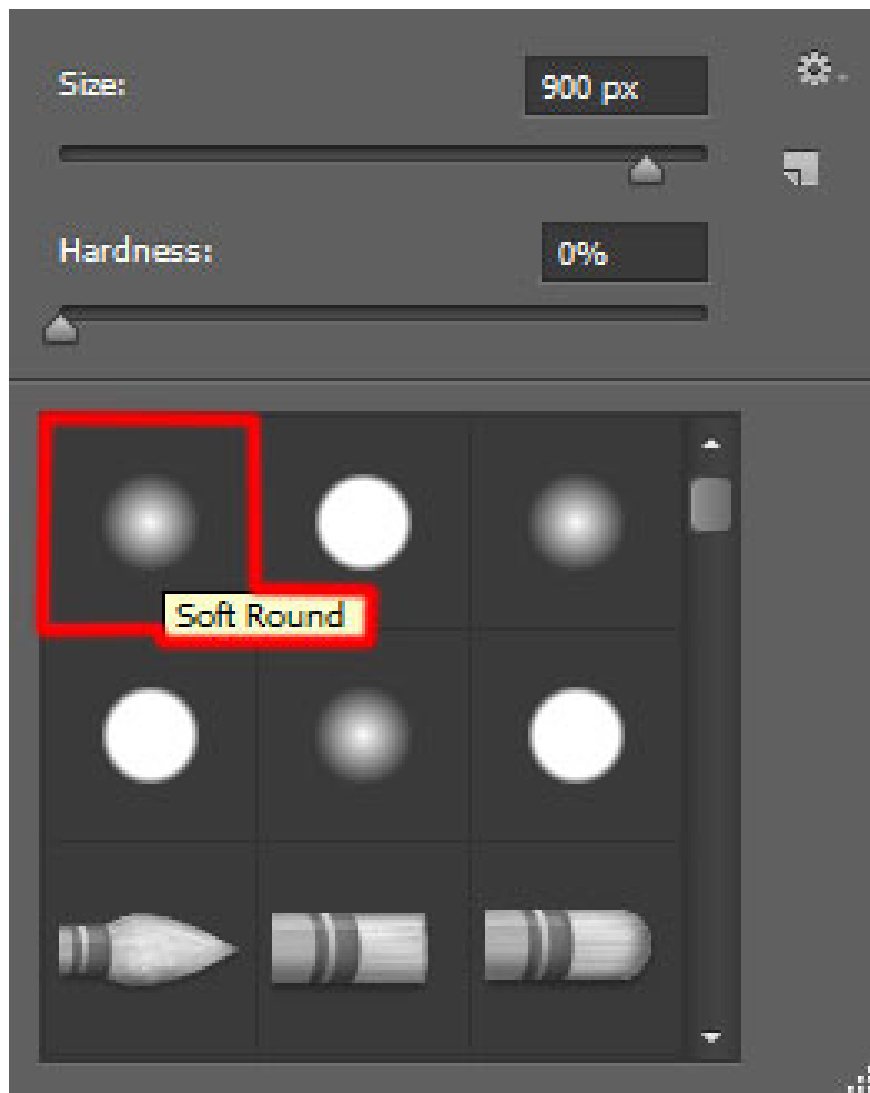
Set the **Fill** for this layer to **24%** and change the **Blending mode** to **Color** .



Create a new layer and use the same tool mentioned above and apply this layer with the color # **5002B** .



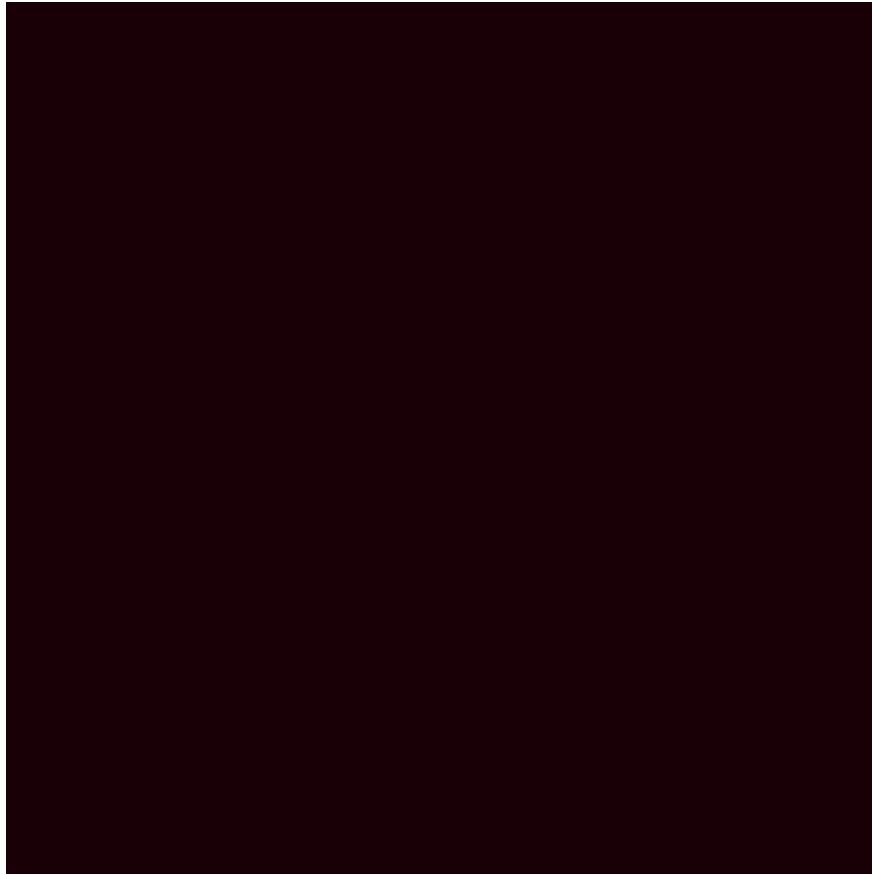
Insert the mask on the layer by selecting **Add layer mask** at the bottom of the **Layers** panel and select the **Soft Round** black brush.



Paint in the mask using this brush to hide the center part of the layer. Set the **Blending mode** for this layer to **Overlay** .



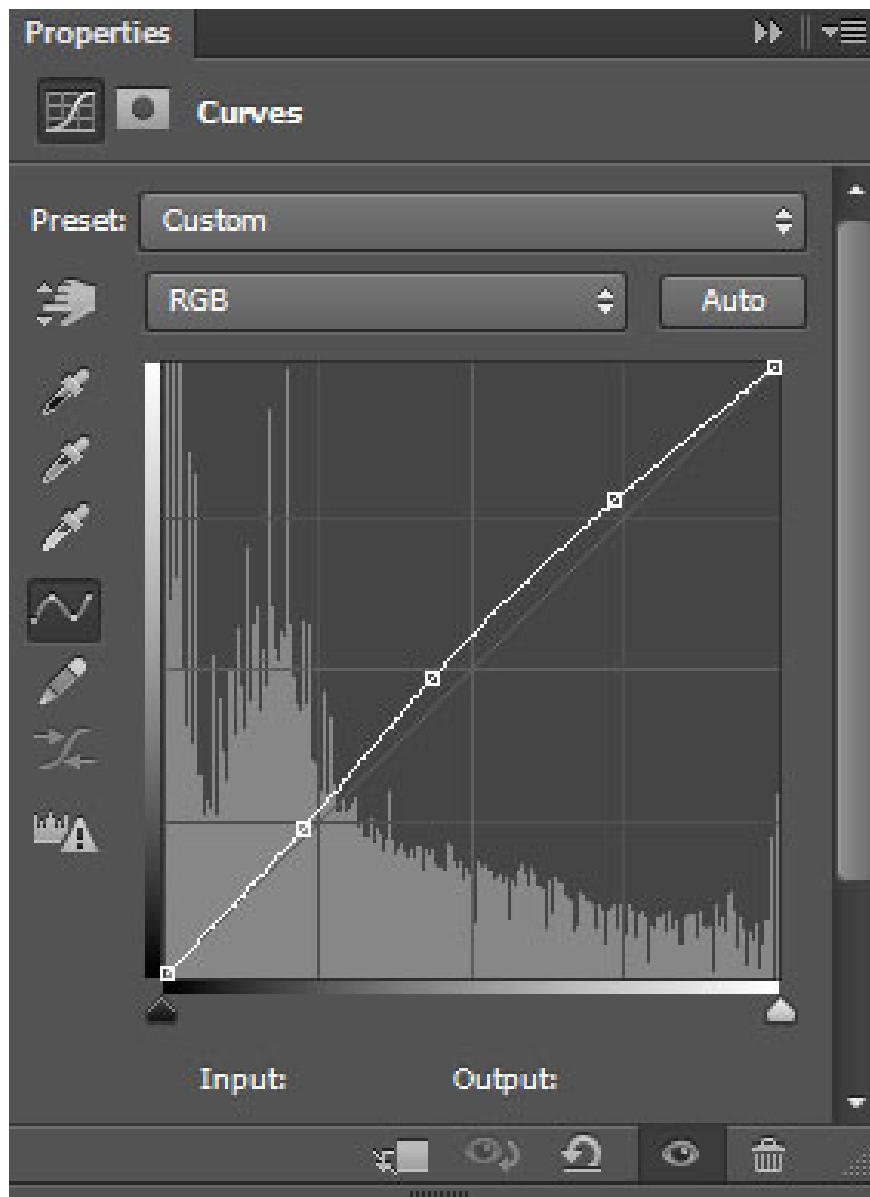
Create a new layer and use the **Paint Bucket Tool (G)** to overlay this layer with color # **190007** .



Set **Fill** to **28%** for this layer and change the **Blend mode** to **Soft Light** .



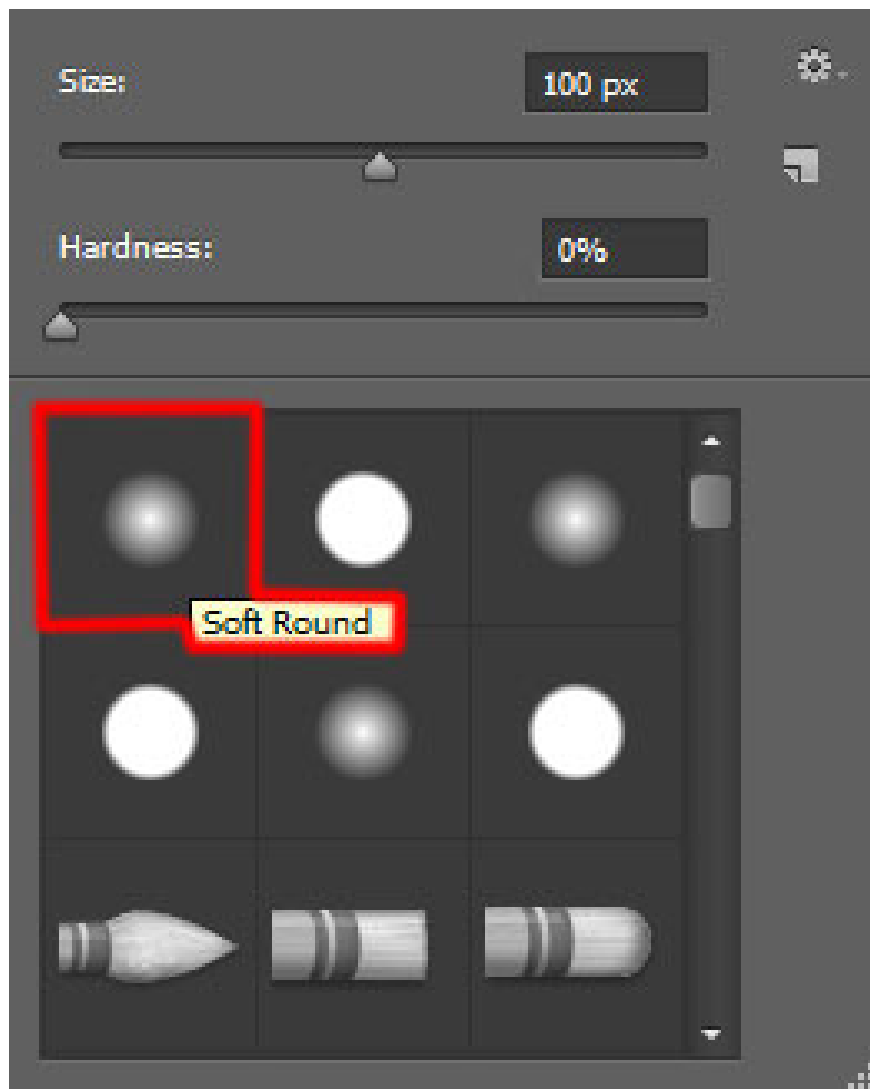
Click **Create new fill or adjustment layer** at the bottom of the **Layers** panel and click **Curves** to adjust the curve as shown below.



We have the next result:



Create a new layer and select **Soft Round** white brush (Brush has **Opacity of 15%** ).



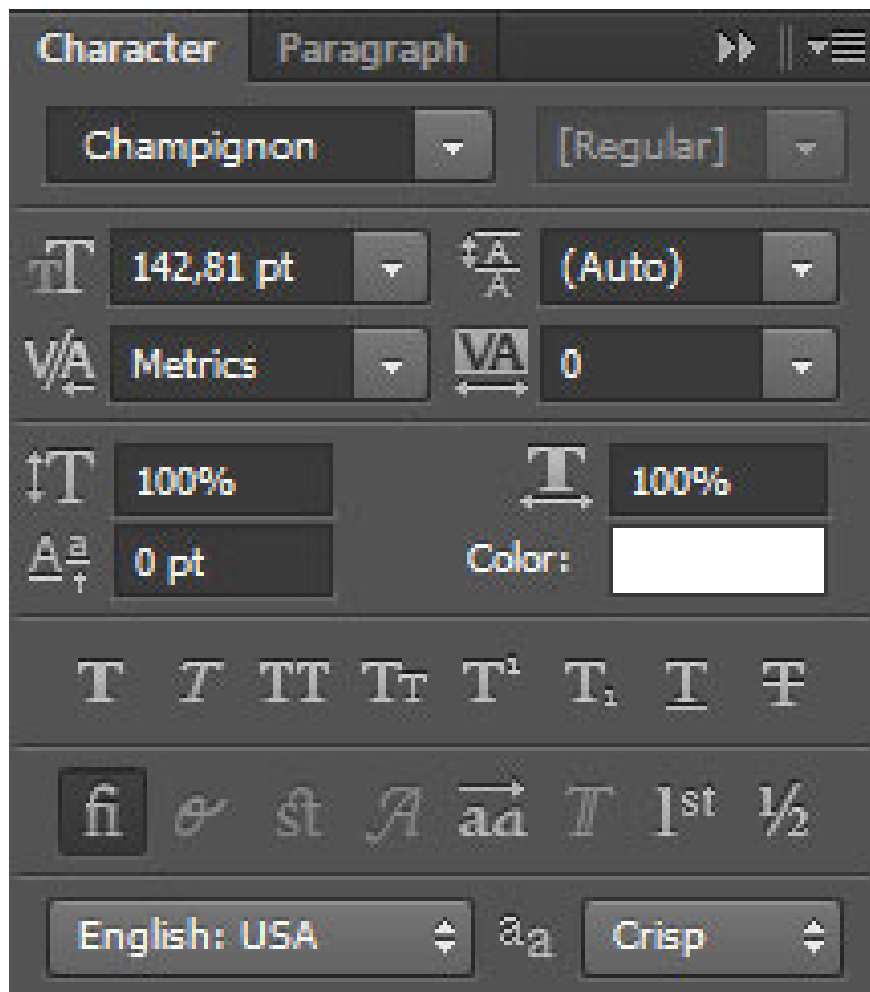
Use this brush to draw snowflakes on Christmas balls. Set **B lending mode** for this layer to **Overlay** .



Create a new layer and use the **Soft Round** brush again to paint the background as shown below. The color of the brush is white (Brush has an **Opacity of 20%** ).



Finally insert the text on the card using the **Horizontal Type** tool (**T**) , select the font, size and color in the **Character** table .



Click on the frame and type ' **Merry Christmas** '. Press **Enter** to apply the text.



Download the free Layered PSD file.

See more:

1. How to use Photoshop CS6 (Part 1): Create digital photos
2. How to use Photoshop CS6 (Part 2): Create fashion collage images
3. How to use Photoshop CS6 (Part 3) - Create Manipulation artwork with exposure effect
4. How to use Photoshop CS6 (Part 4): Create a fading effect
5. Instructions for using Photoshop CS6 (Part 5): Create christmas cards with snowflakes on a red background
6. How to use Photoshop CS6 (Part 6): Create abstract geometric blocks

I wish you all success!

You finished reading the article "**Instructions for using Photoshop CS6 (Part 7): Creating Christmas cards with Christmas balls on a Stylish background**" edited by the [TipsMake](#) team. We hope this article has provided you with many useful tech tips and tricks. You can search for similar articles on tips and guides. Thank you for reading and for following us regularly.