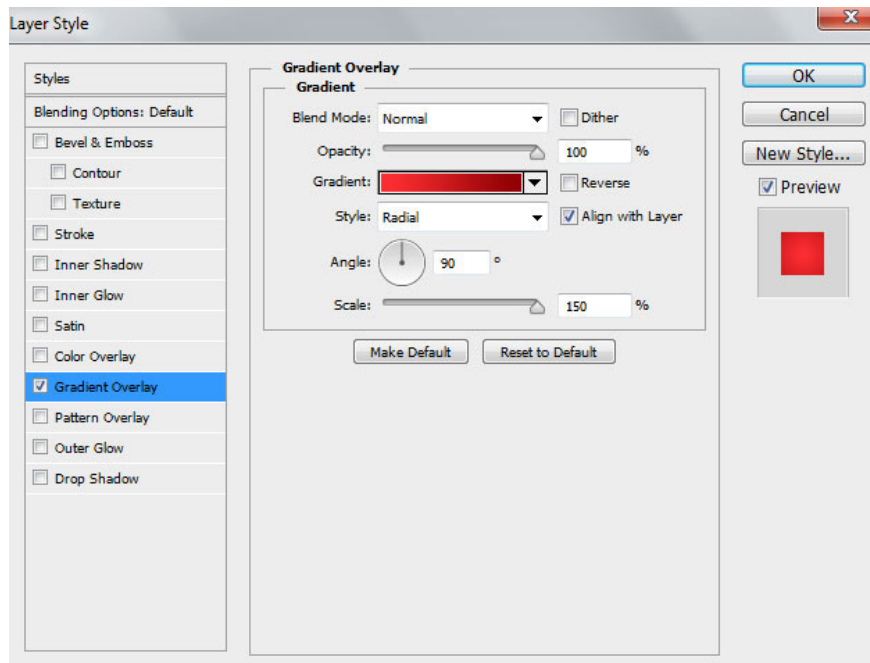


Instructions for using Photoshop CS6 (Part 5): Create christmas cards with snowflakes on a red background

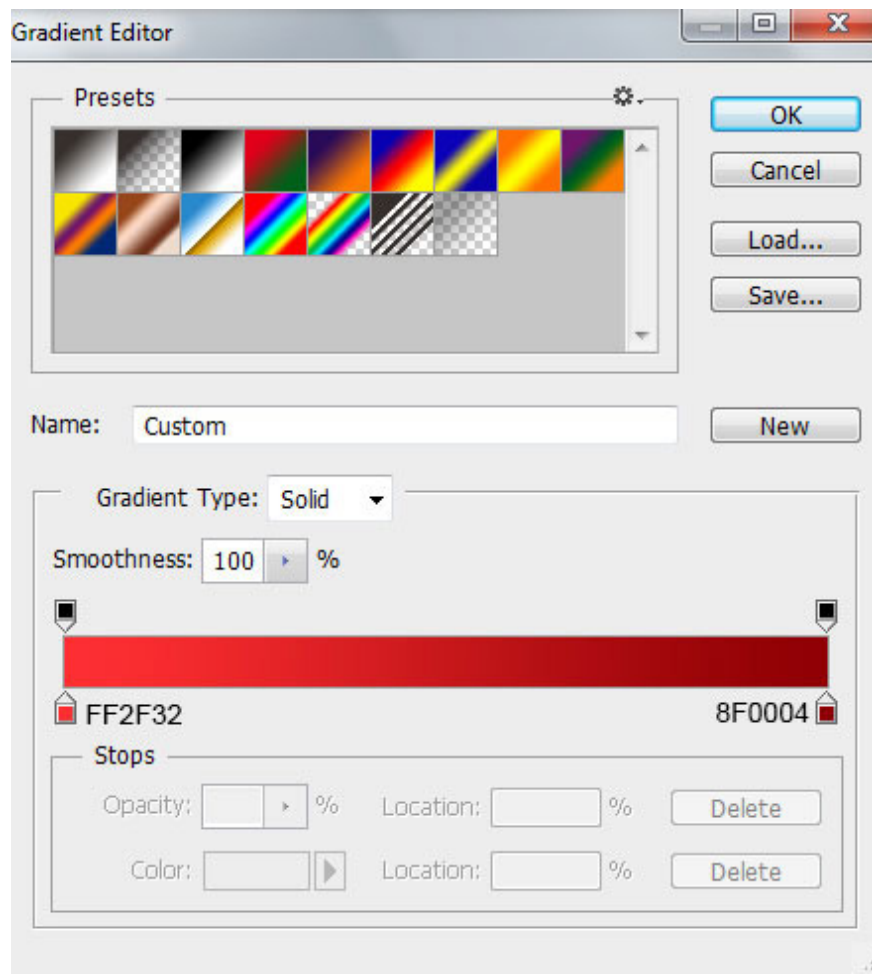
In this tutorial, we will design a simple Christmas card with decorative snowflakes in Adobe Photoshop CS6.

In this tutorial, we will design a simple Christmas card with decorative snowflakes in Adobe Photoshop CS6.

Start working, create a new document (**Ctrl + N**) in **Adobe Photoshop CS6** with the size **1920px x 1200px** (**RGB** color mode) at a resolution of **72 pixels / inch** . Create a new layer, click on the icon **Add a layer style** bottom part of the **Layers** panel and select **Gradient Overlay** .



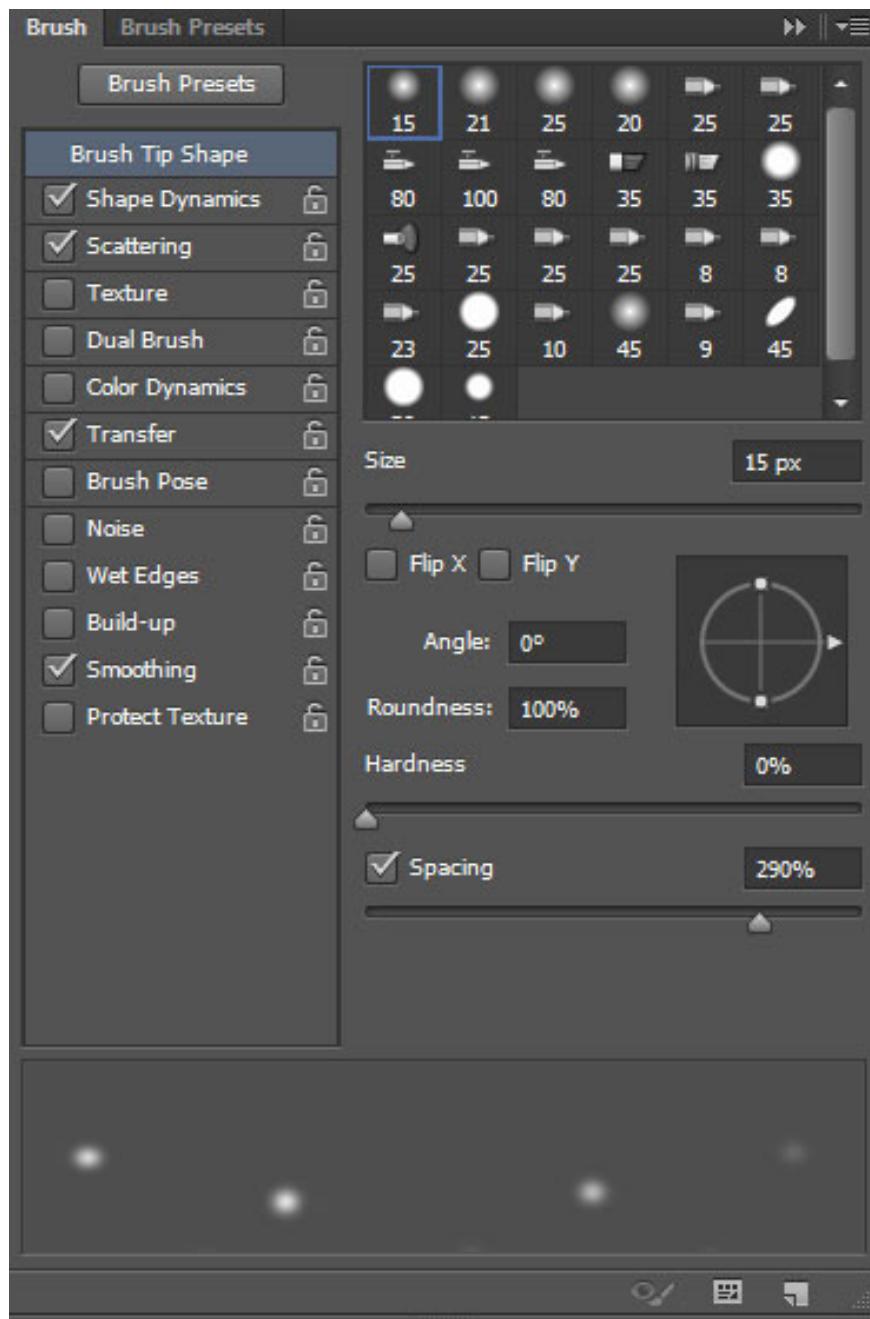
Click the color bar to open the Gradient Editor and set the color stops as shown. Click **OK** to close the **Gradient Editor** dialog box.



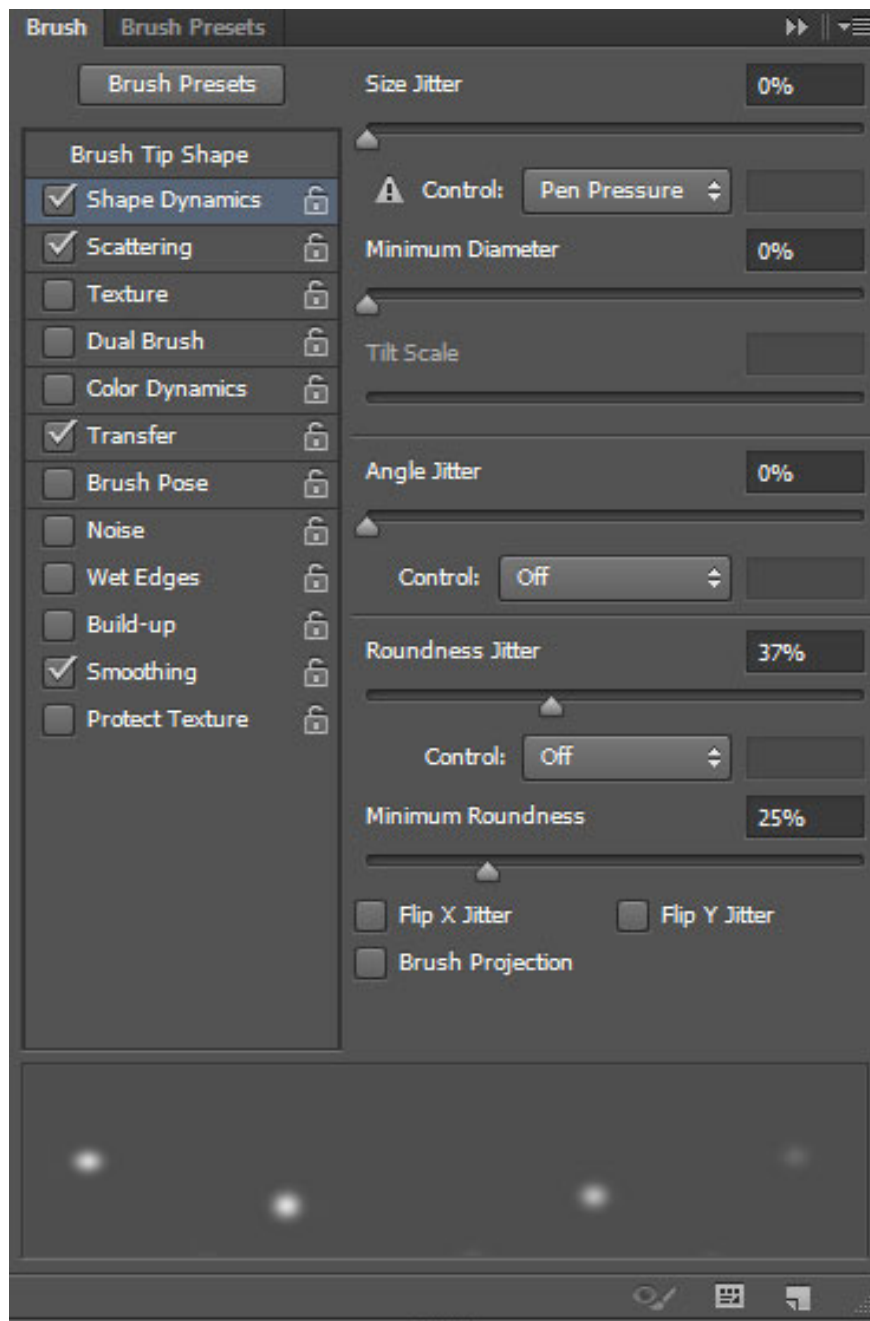
We have the background:



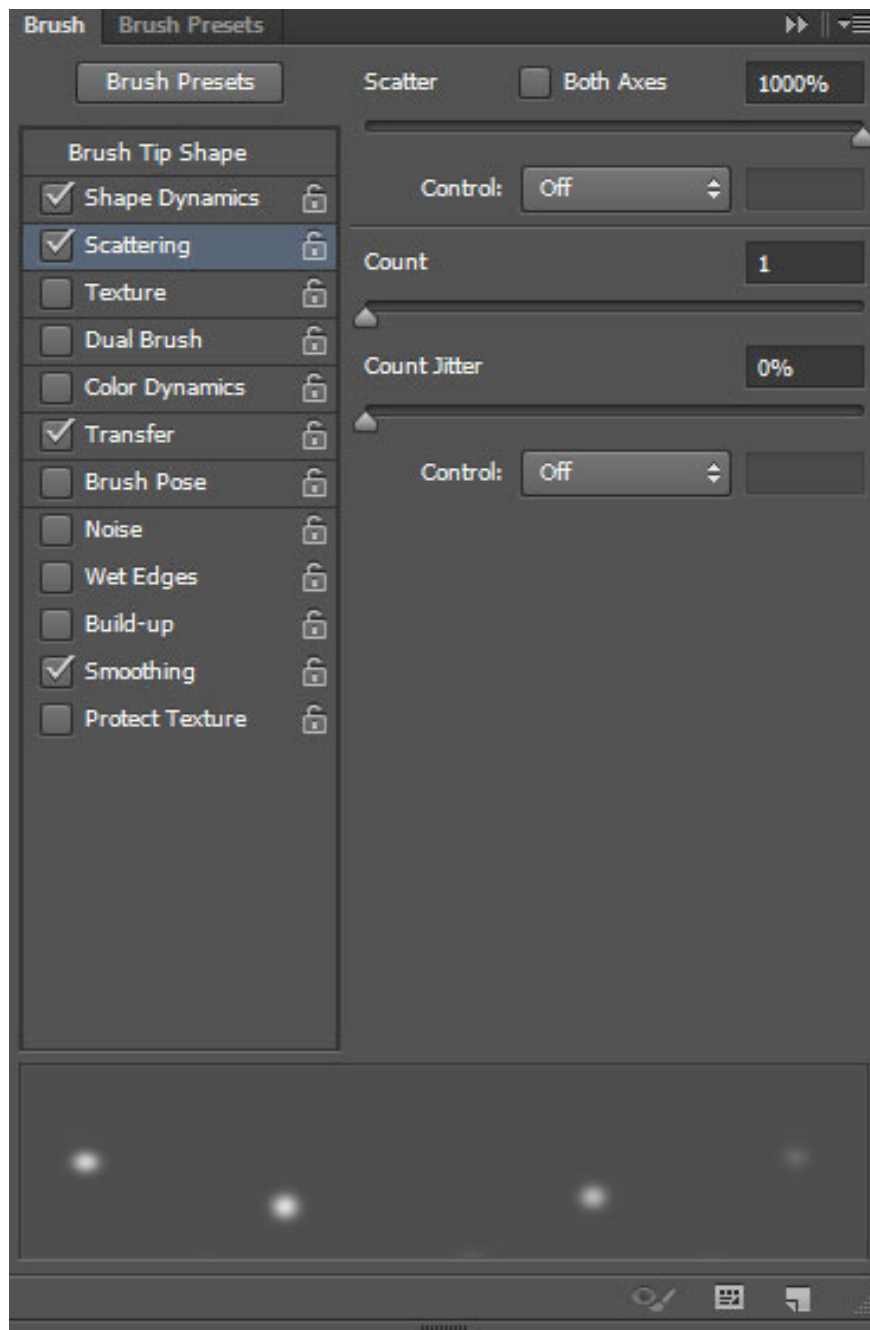
Create a new layer and select the **Soft Round** brush from the **Brush Tool (B)** . We need to customize the brush in the **Brushes** panel (F5), select **Brush Tip Shape** . Click and drag any slider to change the size, distance and corner of the brush as shown. The **Preview** window will display the changed brushstroke.



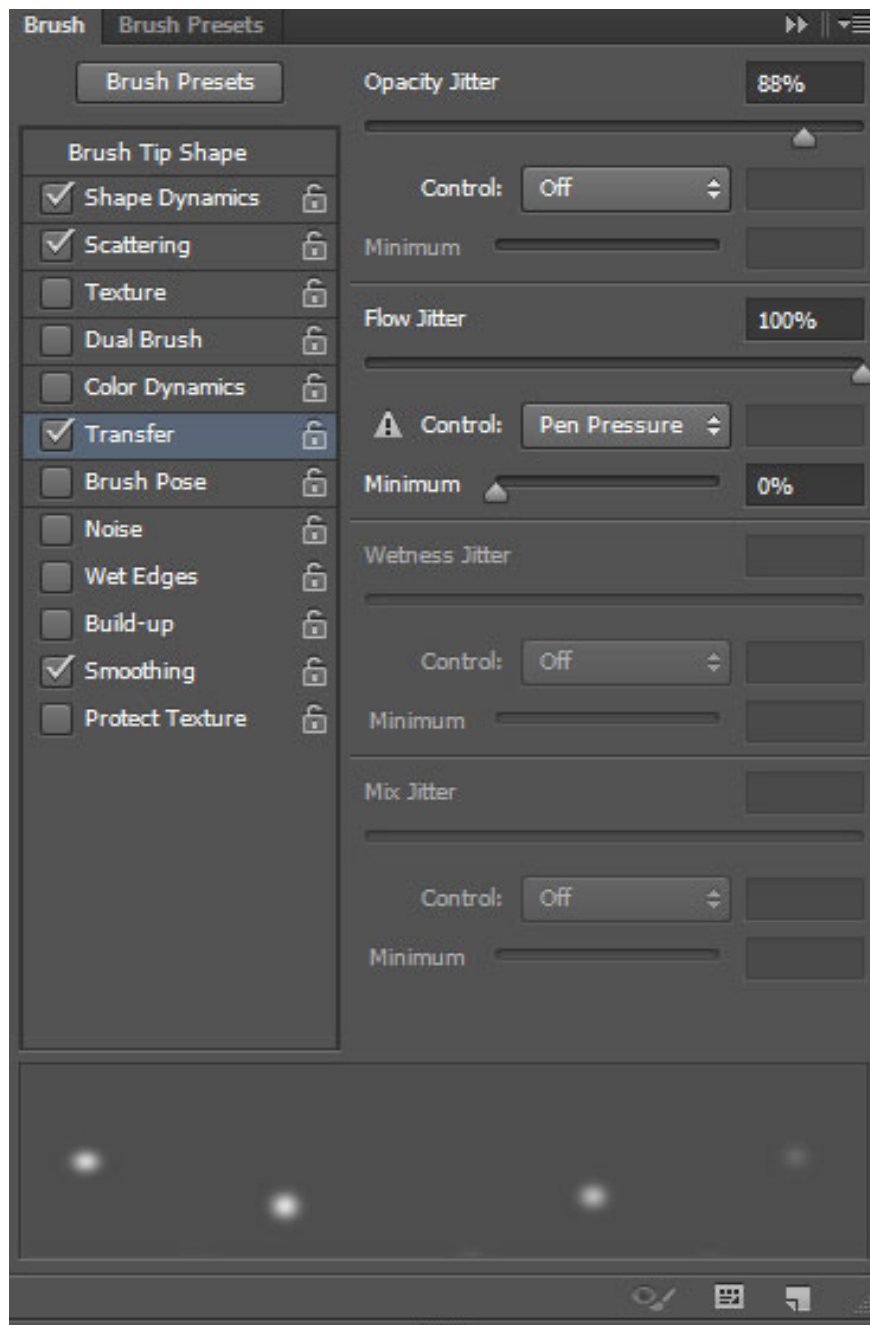
Go to **Shape Dynamics** and apply the following settings:



Apply **Scattering** :



Select **Transfer**:



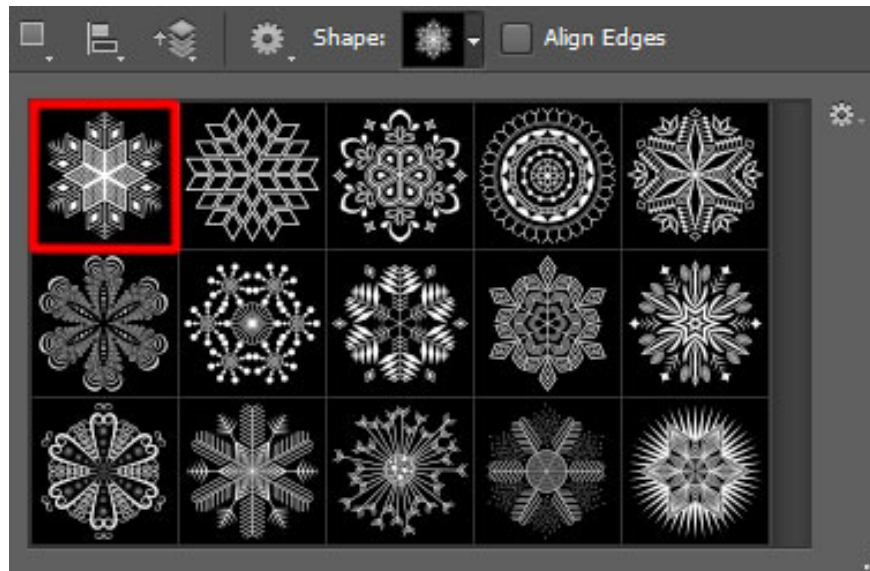
Now use this white brush to represent the snow.



Next, download the set of custom shapes named **Decorative Snowflakes Shapes**.



Create a new layer and select **Custom Shape Tool (U)** in the **Tools bar**, in **Options** click **Shape** to open the selection menu. Find the next shape at the bottom of the menu and then double-click a thumbnail to select it.



Click and drag to draw # EE282B colored snowflakes .



Then make multiple copies of the layer containing the snowflake and choose the **Free Transform (Ctrl + T)** command to resize the copies and rotate the elements, placing them like the next image:



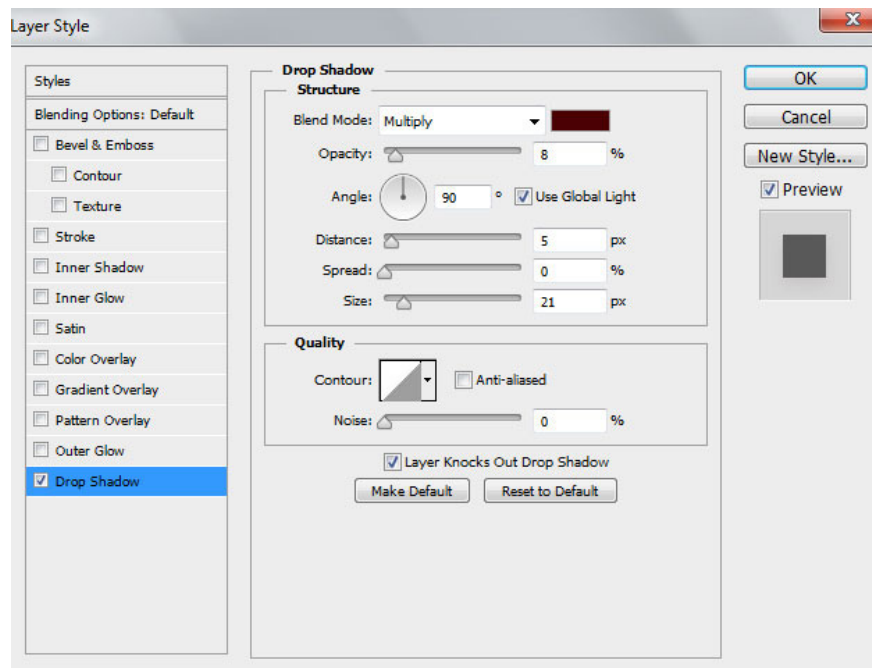
Group all the red snowflakes into one (press the **CTRL** button to select the required layers and hold the left mouse button while dragging the selected layers to the **Create a new group** icon at the bottom of **the Layers panel**). Set the **Fill to 39%** for this new group.



Next, we will draw a rectangle, apply the **Rectangle Tool (U)** to draw a rectangle and insert some anchor points at the top, bottom and middle. Use the **Add Anchor Point Tool** and **Convert Point Tool** to make the necessary modifications. The rectangular color is **# D70010** .



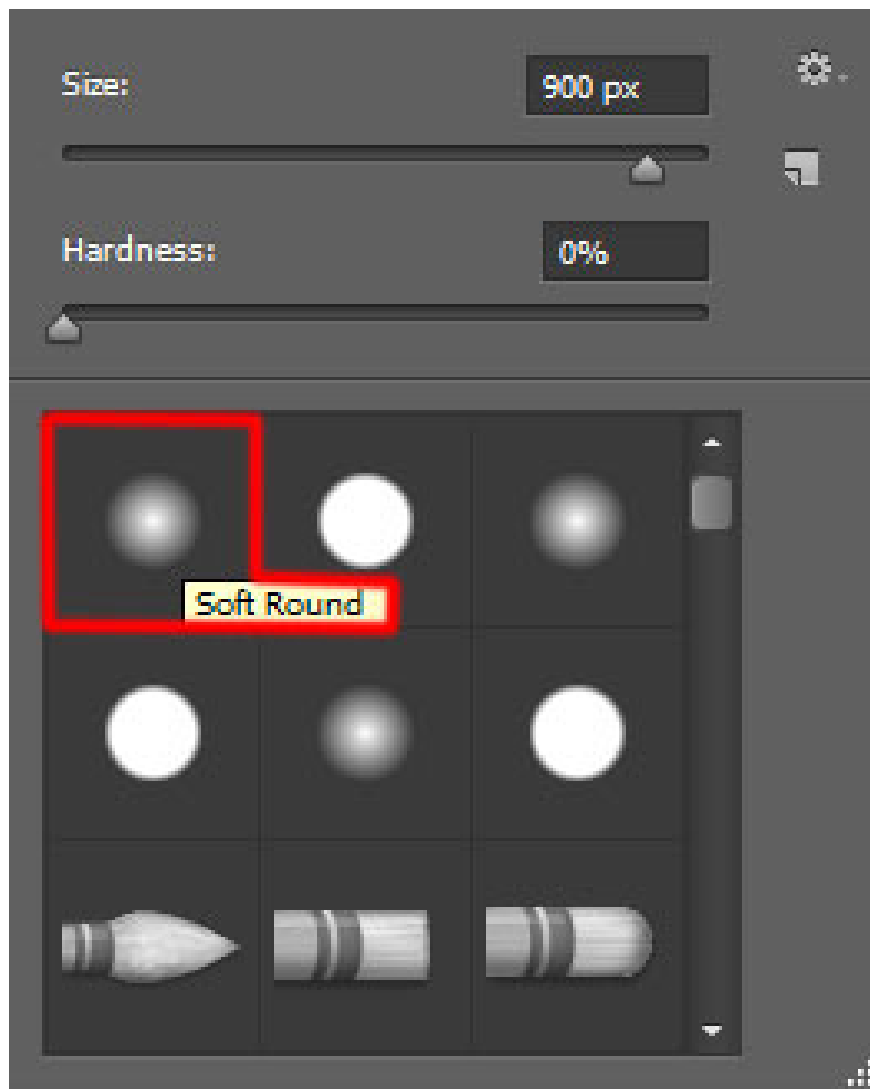
Click on the icon **Add a layer style** at the bottom of the **Layers** panel and select **Drop Shadow** .



We have the next result:



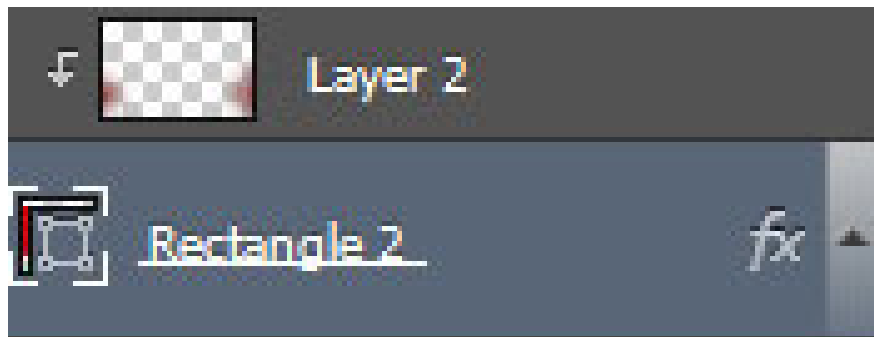
Darken the edges of the rectangle by creating a new layer and choosing the **Soft Round** brush to draw the edges of the rectangle with the color # 99161A.



We have the next result:



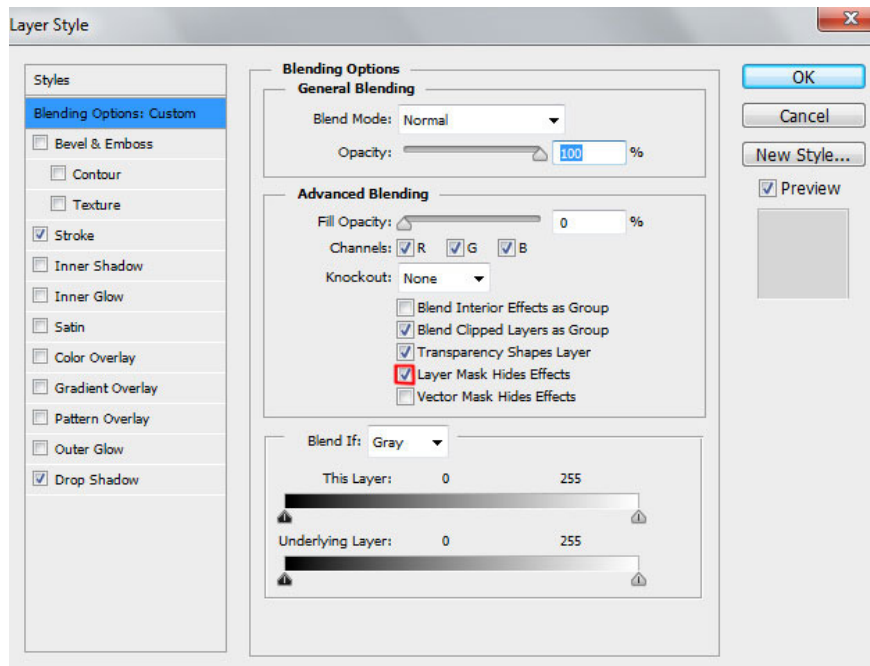
Hold **Alt** (Windows) or **Option** (Mac OS) and click between the brush and rectangle layer in the **Layers** panel to create a **clipping mask**.



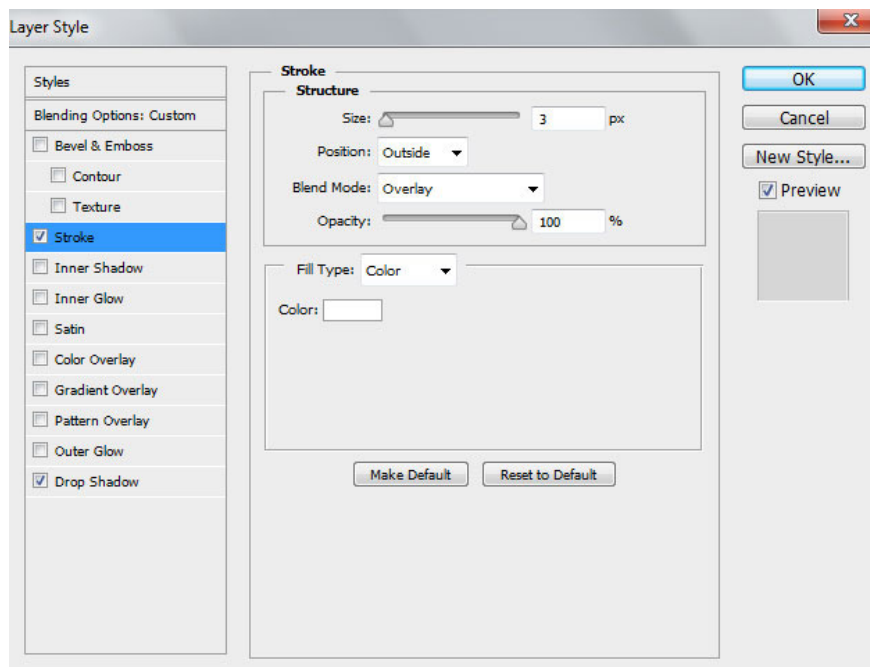
We have the next result:



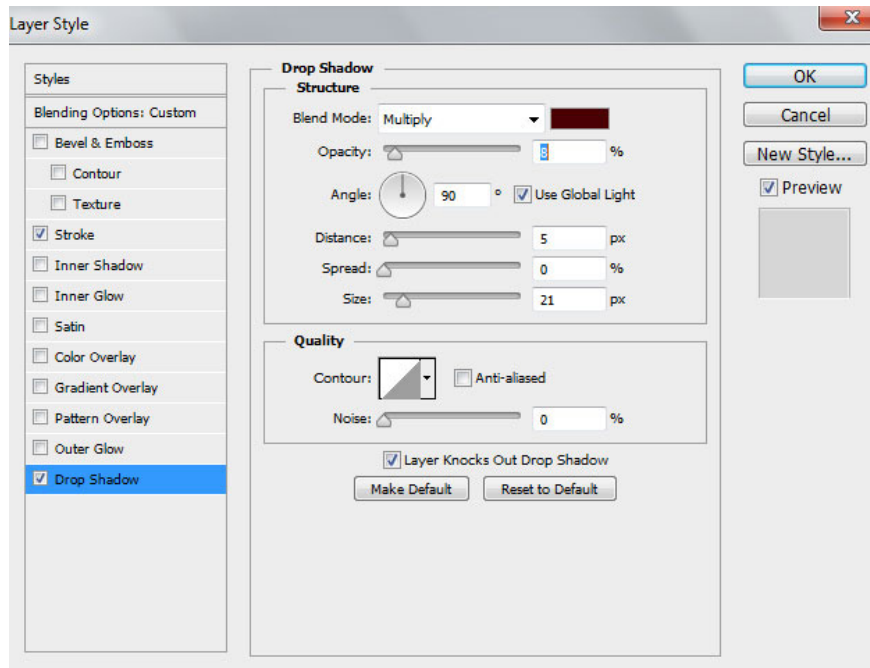
Create a copy of the rectangle layer and set **Fill** to **0%** for this layer.



Click on the icon **Add a layer style** at the bottom of the **Layers** panel and select **Stroke**.



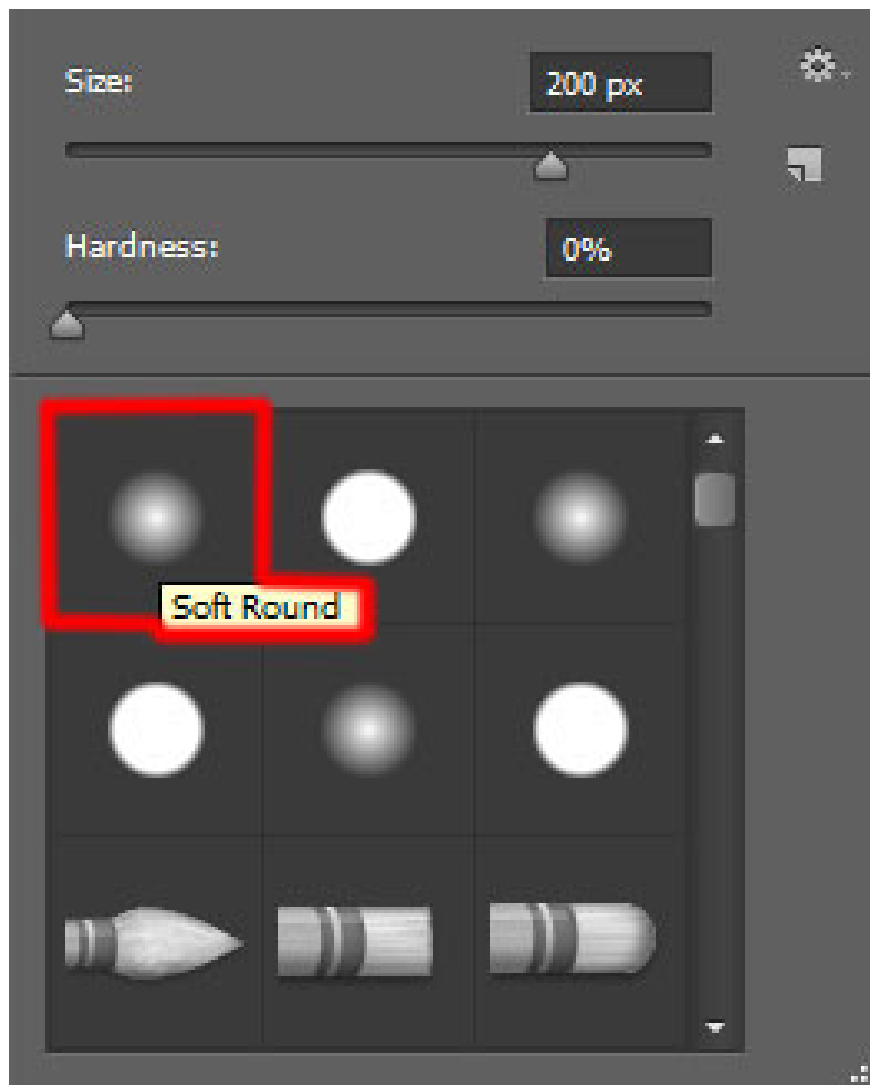
Add **Drop Shadow** :



We have the next result:



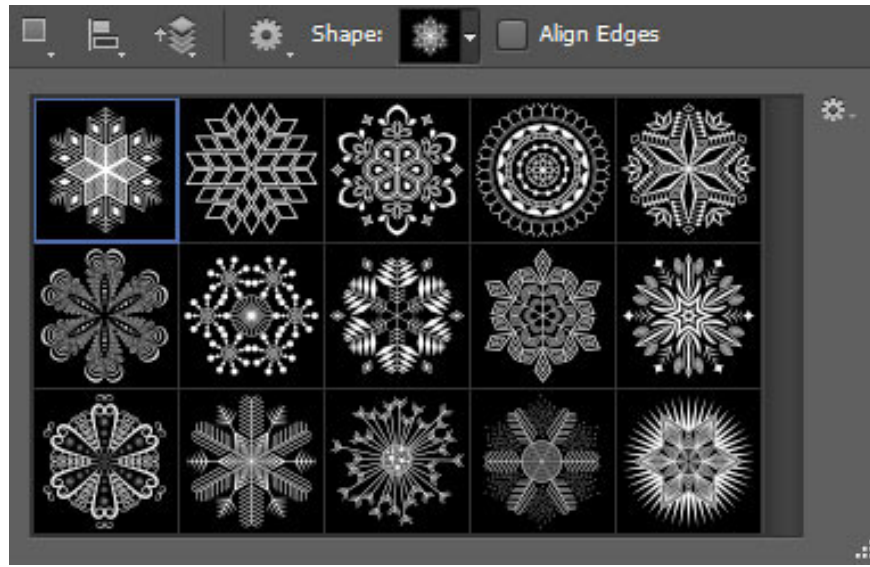
Insert the mask on the same layer by selecting **Add layer mask** in the **Layers panel** and selecting the **Soft Round** black brush.



Paint in the mask to hide the edge of the rectangle in the same way as the image shown below:



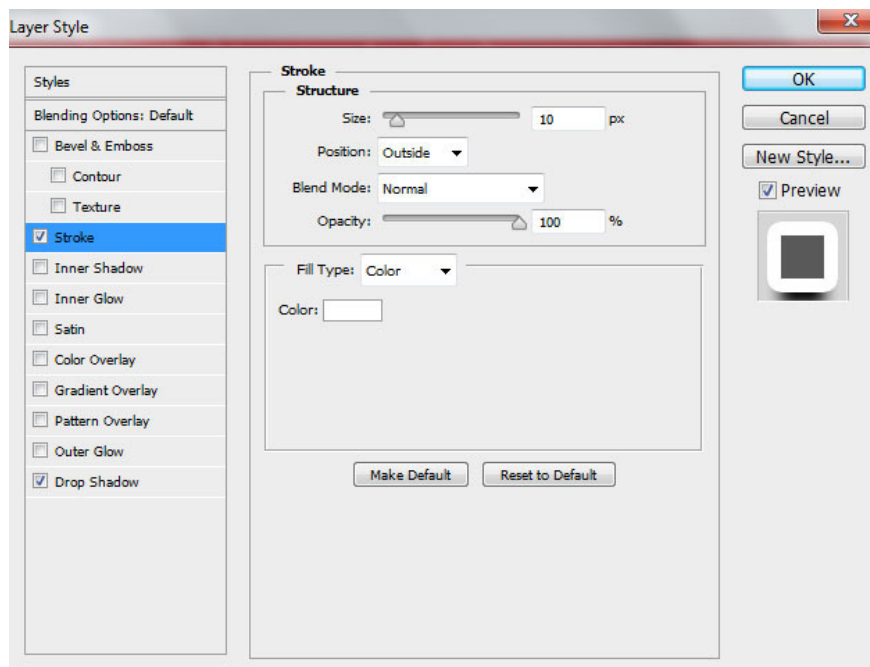
Use big snowflakes by creating a new layer and choosing **Custom Shape Tool (U)** from the snowflake downloaded. This time choose # **910105** color for snowflakes.



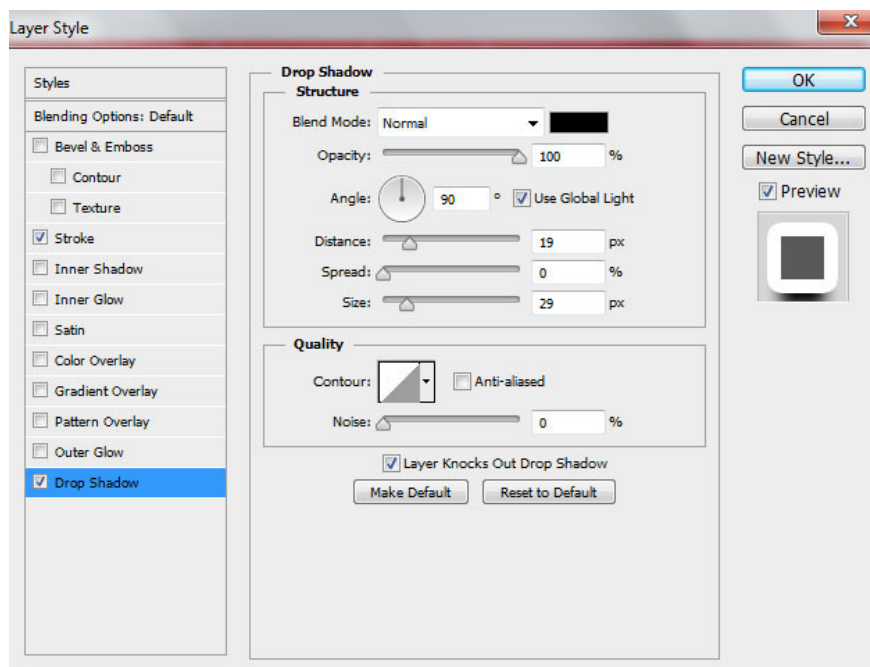
We have the next result:



Click on the icon **Add a layer style** in the bottom part of **the Layers panel** and select **Stroke** .



Apply **Drop Shadow** :



We have the next result:



Do the same to add snowflakes on the background. The parameters **Blending Options > Stroke** must be selected corresponding to the size of the snowflake. The **Drop Shadow** parameters are the same.



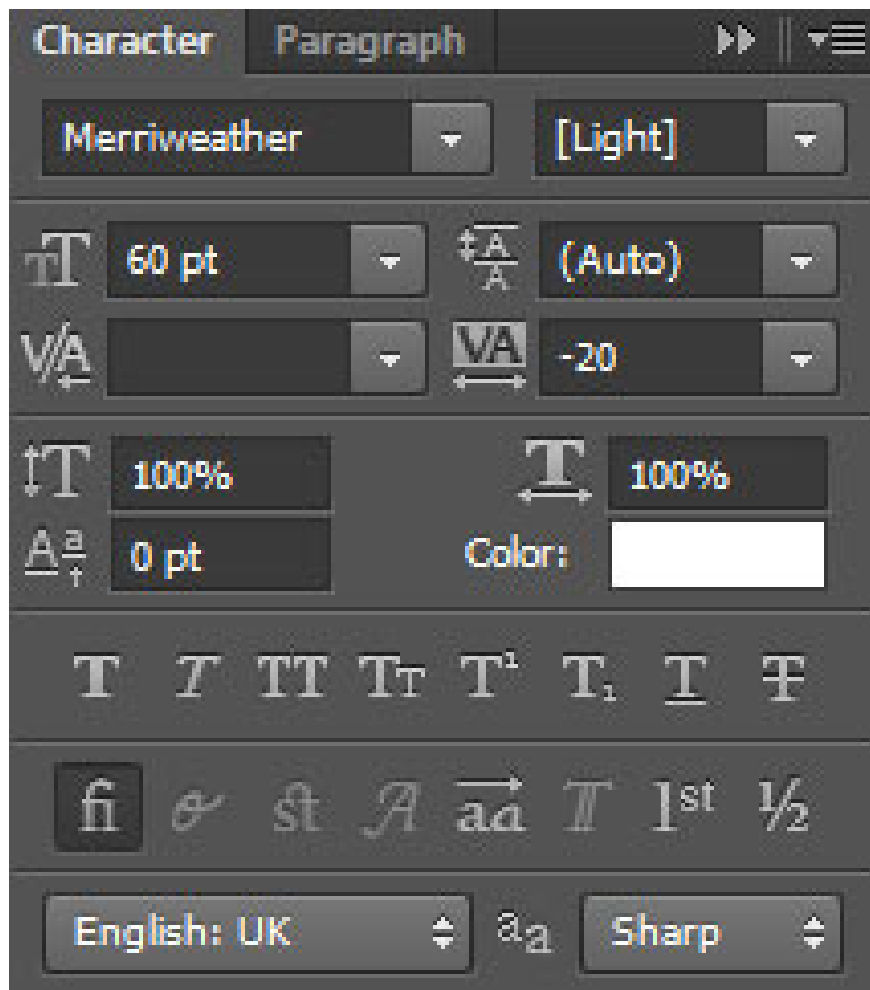
Next create a rope for the snowflake. Use the same **Rectangle Tool (U)** to draw the fibers and place these **new** layers under the snowflake layer.



We have the next result:



Finally insert the text on the card by selecting the **Horizontal Type** tool (T) . Select fonts, sizes and colors in the **Character** table. Here use fonts from FontSquirrel.



Click on the gap and type Merry Christmas. Press **Enter** to display the text.



Our Christmas card is complete!

Download the free Layered PSD file.

You can see more:

1. How to use Photoshop CS6 (Part 1): Create digital photos
2. How to use Photoshop CS6 (Part 2): Create fashion collage images
3. How to use Photoshop CS6 (Part 3): Create Manipulation artwork with exposure effect
4. How to use Photoshop CS6 (Part 4): Create a fading effect

You finished reading the article "**Instructions for using Photoshop CS6 (Part 5): Create christmas cards with snowflakes on a red background**" edited by the [TipsMake](#) team. We hope this article has provided you with many useful tech tips and tricks. You can search for similar articles on tips and guides. Thank you for reading and for following us regularly.