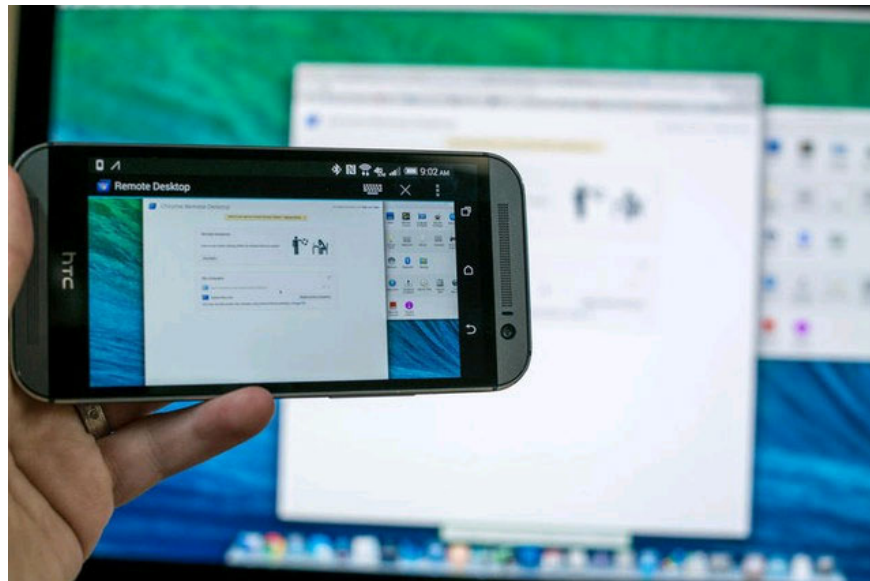


Instructions for using Chrome Remote Desktop application on Android

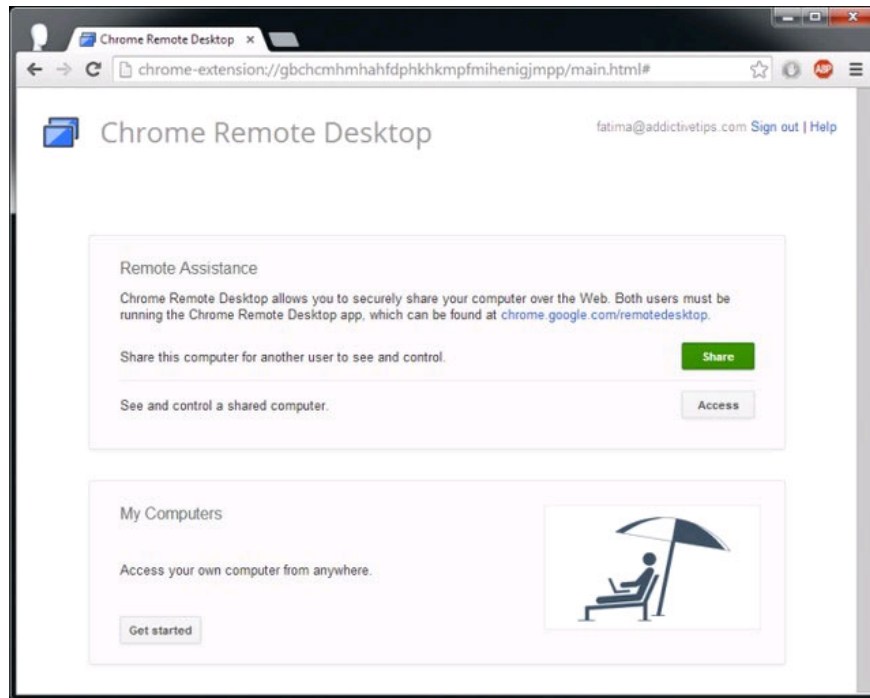
The Chrome Remote Desktop application that Google has just released allows you to control a Windows or Mac computer using an Android device. Here's how to read how to use the Chrome Remote Desktop application for Android that has just been released by Google in the past few days.

The Chrome Remote Desktop application that Google has just released allows you to control a Windows or Mac computer using an Android device.

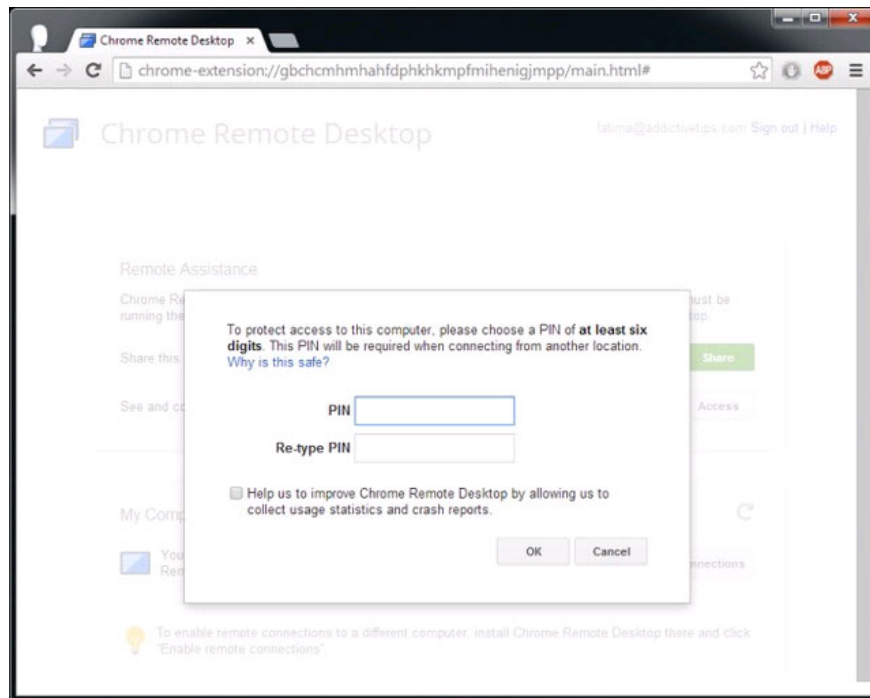


This application was previously available on Google Chrome browser via Chrome Remote Desktop extension. With the Android version, users of Android devices can also access their Windows or Mac computers more conveniently.

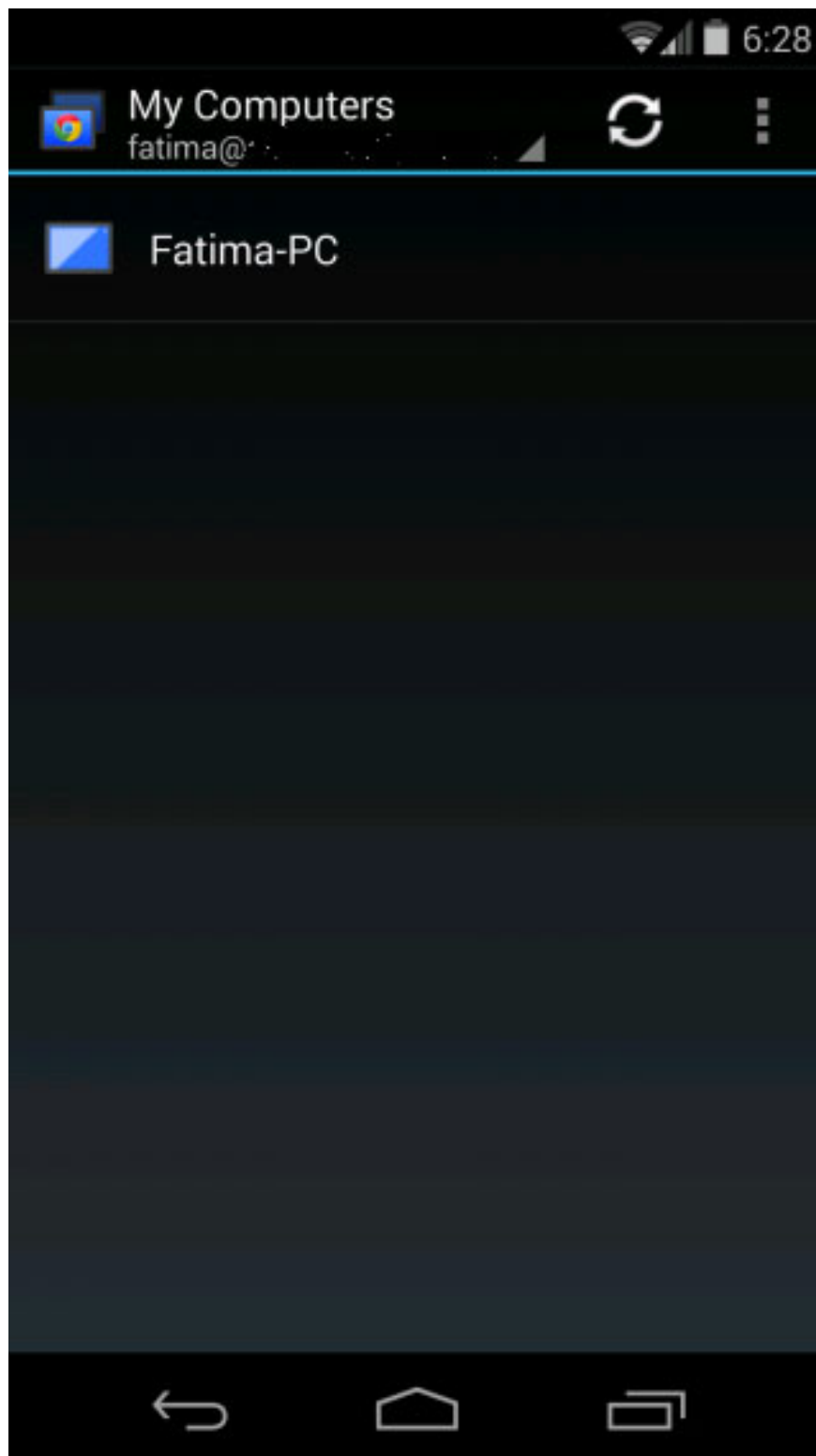
To get started, you must first download and install the **Chrome Remote Desktop utility for Google Chrome** . Then go to the **Settings** page of this utility.



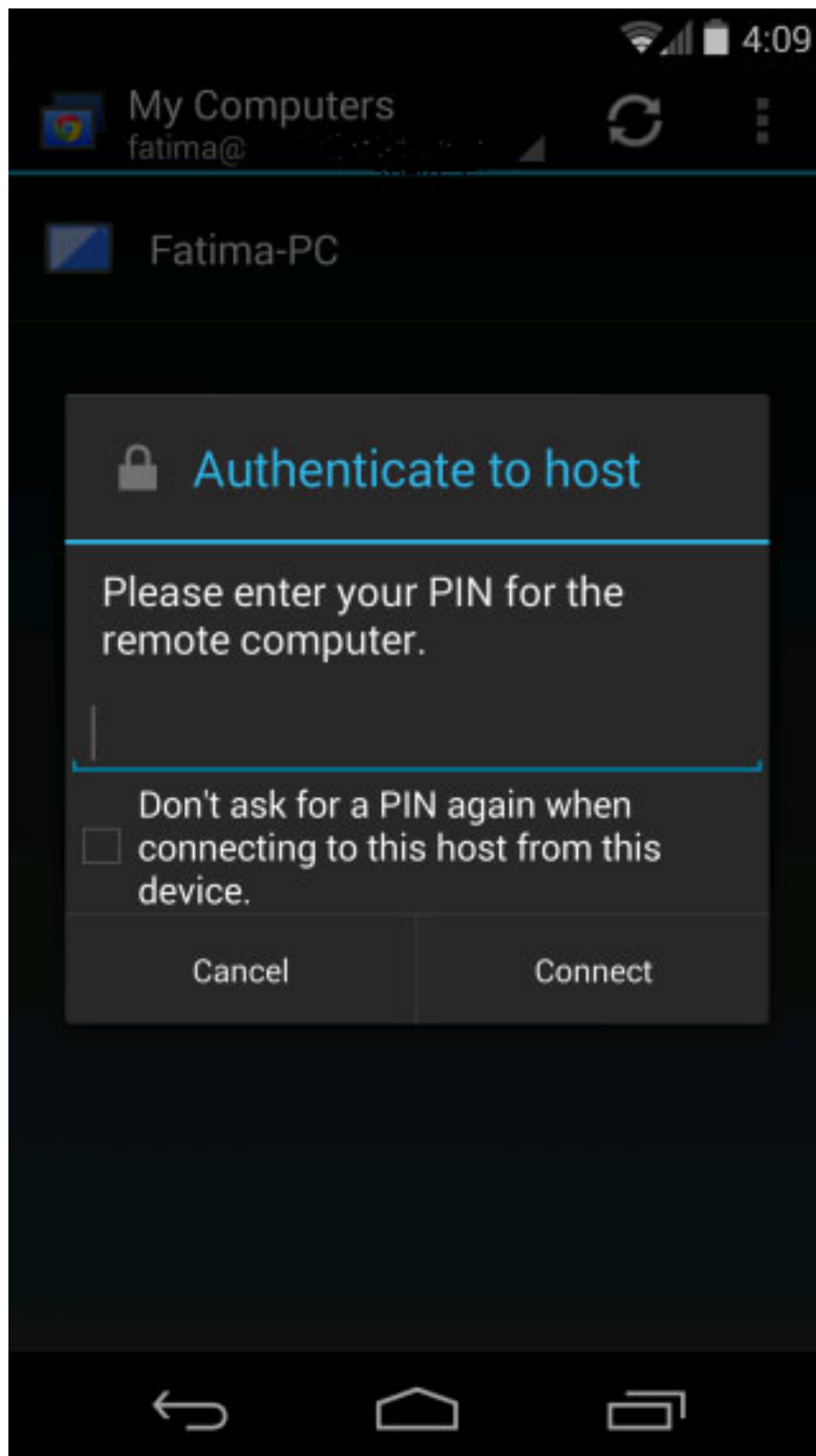
Click **Get Started** and then **Enable Remote Access** . You will be asked for a PIN, enter your PIN as you wish and remember it.



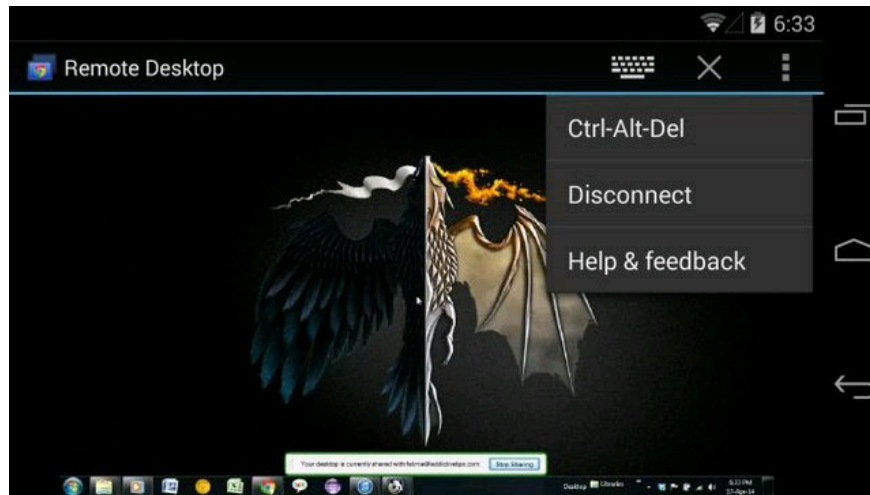
Then use the Google account you use on Google Chrome to log in to your device or application (*if asked*). You will see a list of computers that have *Chrome Remote Desktop* installed. Click on the computer name you need to connect.



A window asking for a PIN code will appear, enter the PIN you set up earlier and click **Connect**.



And this is the result.



You will be provided with a virtual keyboard to work with the familiar **Ctrl-Alt-Del** quick command to manipulate. The **Disconnect** option will disconnect between your computer and Android device as soon as you click.

You finished reading the article "**Instructions for using Chrome Remote Desktop application on Android**" edited by the [TipsMake](#) team. We hope this article has provided you with many useful tech tips and tricks. You can search for similar articles on tips and guides. Thank you for reading and for following us regularly.