

Instructions for using Bluetooth on devices

Bluetooth allows users to connect devices without using wires or cables. This is wireless technology, allowing devices like mobile phones, keyboards, mice, headsets and speakers to interact with each other over a short distance without the need for a cable.

Bluetooth allows users to connect devices without using wires or cables. This is wireless technology, allowing devices like mobile phones, keyboards, mice, headsets and speakers to interact with each other over a short distance without the need for a cable.

Bluetooth technology allows users to exchange data between two or more electronic devices, provided all devices are within range. There are many ways to use Bluetooth technology such as connecting a Bluetooth handsfree to a phone to make a call while driving, pairing with a Bluetooth printer with a computer so you don't have to use wires and cables, etc. .

Instructions for using Bluetooth on devices

1. Learn about Bluetooth
 1. What is Bluetooth?
 2. Check Bluetooth enabled devices
 3. Learn the capabilities of Bluetooth devices
 4. Pair Bluetooth devices
 5. Install Bluetooth adapter
2. Use Bluetooth technology
 1. Transfer files between devices
 2. Use Bluetooth technology to talk on the phone
 3. Share mobile networks for other devices
 4. Use Bluetooth to drive safer
 5. Synchronize data between Bluetooth devices
 6. Use Bluetooth devices in small offices
 7. Use a Bluetooth device to customize the sound system
 8. Use Bluetooth to protect your home or car
 9. Connect PlayStation to computer
 10. Play multiplayer games

Learn about Bluetooth

What is Bluetooth?

In essence, Bluetooth is a wireless technology that can connect electronic devices to each other by using radio waves without cables. It sounds like Wifi but not. Bluetooth is great in that it can connect devices that do not belong to a specific network - such as a mouse or wireless headset for mobile phones or laptops.

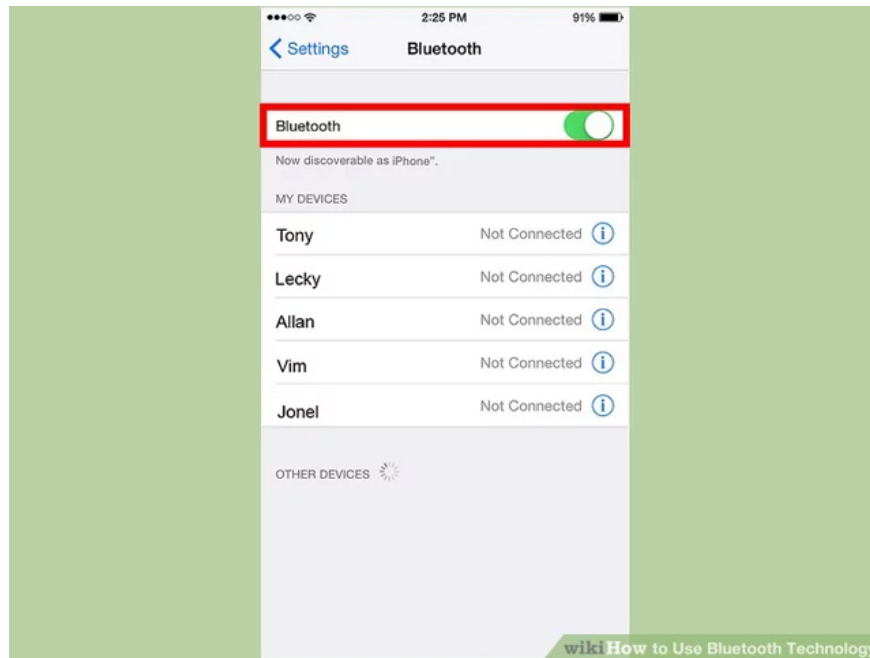


Bluetooth is suitable for short connections (in a few steps, for example). Setting it up is also easier and faster than Wifi, making it ideal for connecting two devices together. Besides, Bluetooth also costs less power, which helps extend battery life for devices such as mice or smartphones.

Bluetooth can pair the headset with most smartphones so that it can talk without touching the phone. You can pair a game console with your computer without using wires, play music via Bluetooth speakers from your phone or laptop without connecting to them or setting up a sound system without running the speaker anywhere .

1. Bluetooth has a maximum range of about 30 feet.
2. The outstanding Bluetooth transfer rate is about 24 Mbps.

Check Bluetooth enabled devices



Bluetooth has been around for a long time (about 20 years) and leads the wireless connectivity market. Most electronic devices today support Bluetooth. Although most laptops have built-in Bluetooth, the desktops usually do not. You can purchase Bluetooth dongle if you want to connect the desktop to a Bluetooth device.

See also: Software that supports Bluetooth connection with a computer

1. Today, many modern cars support Bluetooth, allowing users to pair with phones while driving.
2. Almost every smartphone can pair with Bluetooth devices.
3. Many newer printers have Bluetooth capability and can print wirelessly.

To find out if your computer has Bluetooth, in Windows 7 and Vista, click the **Start** button, type **device manager** in the **Search** dialog box, and press **Enter** . XP users will click **Start**> **Run** then type **devmgmt.msc** and press **Enter** .

When Device Manager runs, look for the item called **Bluetooth Radios** in the list of devices - if it is here, that means the computer is able to communicate via Bluetooth. Without it and you want to add Bluetooth functionality, buy an adapter - a Bluetooth adapter plugged into a USB port for only about £ 10.

Bluetooth is a widely used and very useful tool. So, if you own a smartphone with Bluetooth, you will enjoy connecting it to your computer and exchanging files very quickly.

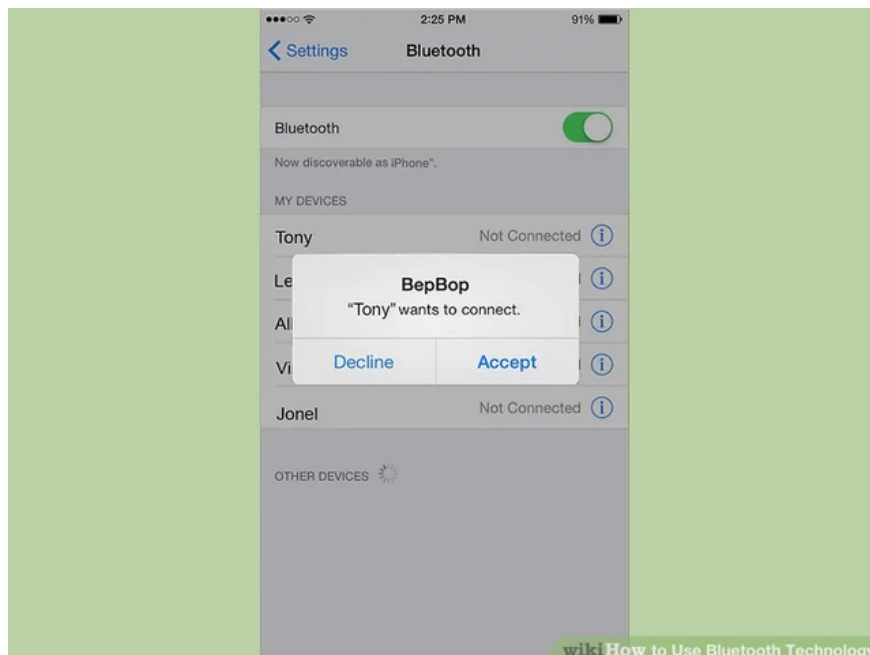
See also: How to check if your computer has Bluetooth?

Learn the capabilities of Bluetooth devices



Every Bluetooth device has one or more functions. For example, a mobile phone number may only allow you to use Bluetooth to make phone calls; while other mobile phones allow you to transfer files to and from other mobile phones. Each Bluetooth device has different functions. Review the manual or consult with the manufacturer about your electronic device to determine how Bluetooth technology can be used.

Pair Bluetooth devices



To use Bluetooth technology, you must wirelessly connect your devices to each other, also known as "pairing". Depending on the device, there will be different pairing methods but in general you will have a 'listening' device and a second device is put into pairing mode. For example, if you pair a headset with a phone, your phone must be in 'listen' mode and the headset is in 'paired' mode. The phone detects the headset and establishes a

connection.

Follow the instructions provided with the Bluetooth device to complete the pairing process. In most cases, you will be asked to perform a series of specific steps to pair the device.

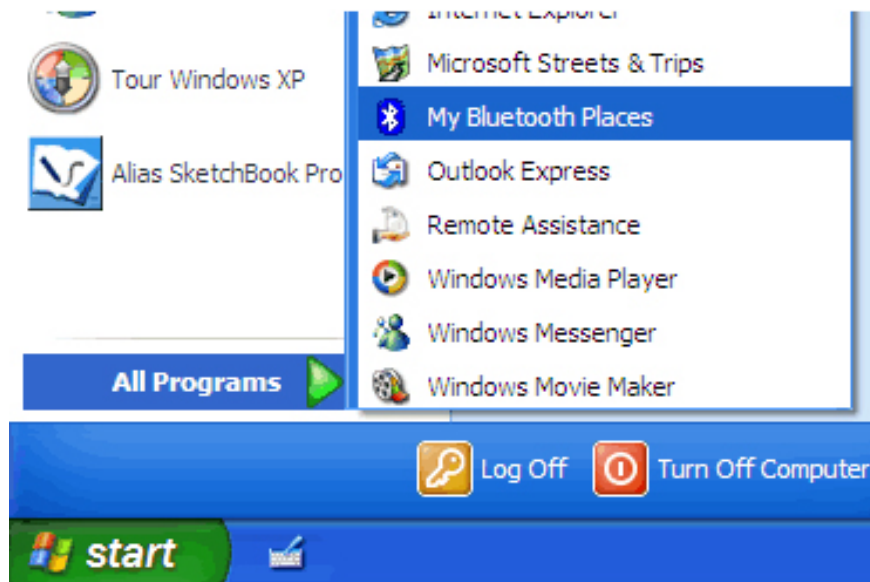
1. When pairing the device, you will normally be asked to enter your PIN before the connection is made. If no PIN is set, the default is usually 0000.
2. Pairing usually only needs to be done once. As long as Bluetooth is enabled on devices, next time using the connections will automatically take place.

You can refer to the detailed tutorial on each Windows operating system here: [How to connect a Bluetooth device on Windows](#)

As mentioned above, refer to the instructions included with your phone to learn how to turn on Bluetooth (most of them are turned off by default to save battery power). Besides, you should also check to see if ' **visibility** ' is selected and remember to leave it in **ON** mode.

Return to the computer. If you are using Windows XP, click **Start** , select **Control Panel** and double-click the **Bluetooth** icon. If this is the first time to use Bluetooth, the configuration setup wizard will launch - follow and accept all defaults. Finally, click **Skip ? Finish** .

Windows XP will create a shortcut on Windows Desktop called **My Bluetooth Places** . Double click to open it and select **Add a Bluetooth Device** from the **Task List** on the left. When the wizard appears, click **Next** and when the phone is found, click its icon and then click **Next** .



When the device asks to add a computer to the devices, click **Yes** and touch the passcode displayed on the computer screen. Now phones and computers have become pairs.

Windows 7 users click **Start ? Control Panel ? Hardware and Sound ? Add a Bluetooth Device** . After a while, Windows will find the phone - click its icon to select it and click **Next** .

If you are using Windows Vista, click **Start ? Control Panel ? Hardware and Sound ? Add a Wireless Device** . The device will appear in a new window. Click the icon to select the device and then click **Next** .

After that, Windows Vista and 7 will display a passcode for users to enter into the phone or ask the user to use a pairing option. If it's the second way, select '**Create a pairing code for me**' .

Windows will display a code and at the same time the phone will ask whether to add the computer to the list of devices. Select **Yes** . Enter that code in the phone. After a period of time, the device will become paired to communicate.

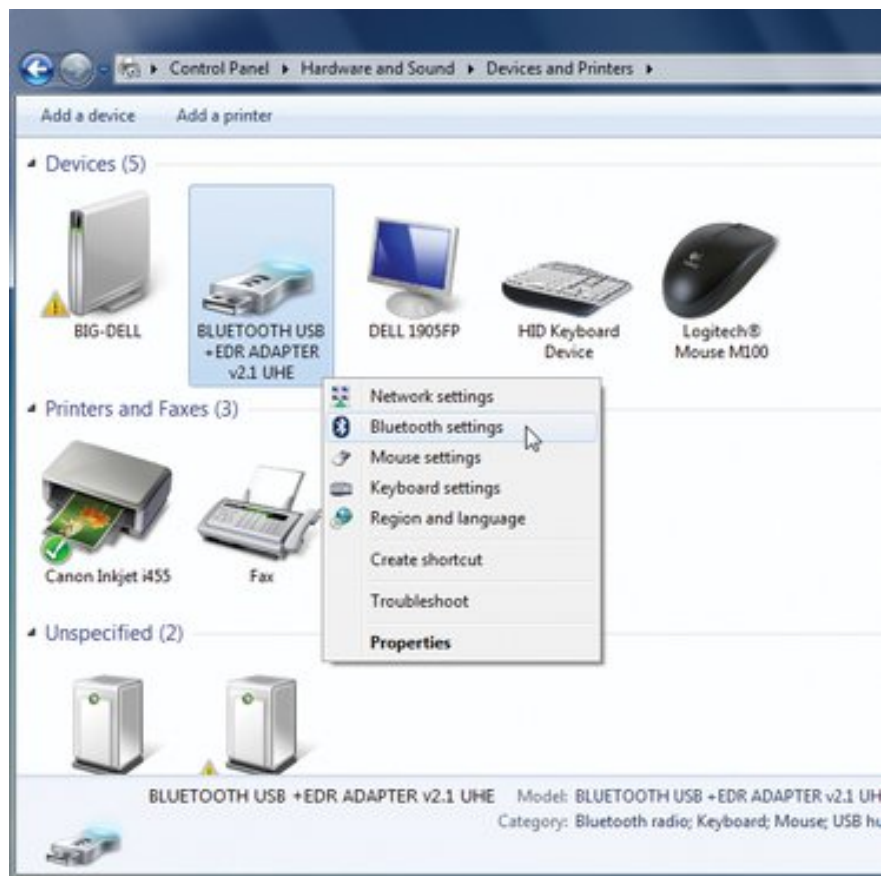
Click **Close** and return to the **Control Panel** , open **Hardware and Sound** and select **Devices and Printers** (in Windows 7) or **Bluetooth Devices** (in Vista) and the phone will be listed here.

Install Bluetooth adapter

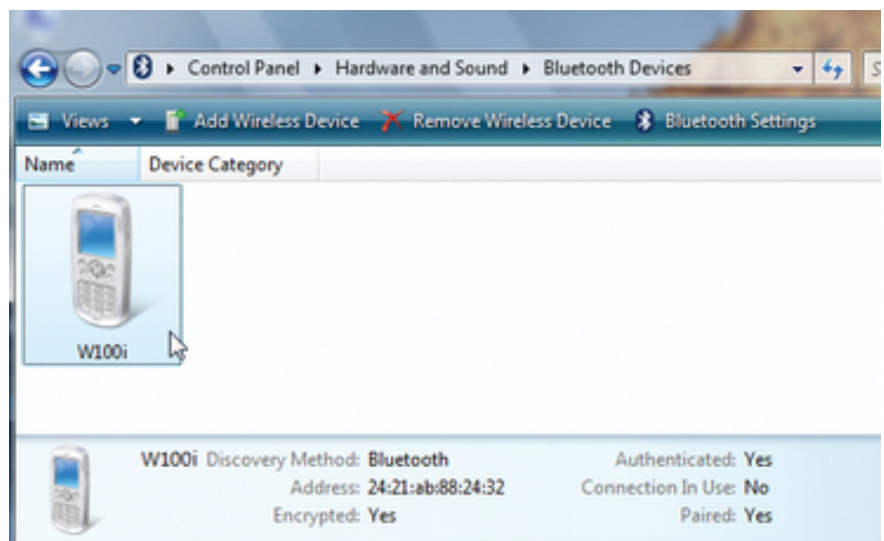
Windows 7 and Vista operating system will recognize Bluetooth adapter when it is plugged in and automatically installed. Windows 7 sets the settings in the **Control Panel** under **Hardware and Sound** , under **Devices and Printers** .



The Bluetooth adapter installed on Windows Vista can also be found in the Control Panel under Hardware and Sound, inside Bluetooth Devices.

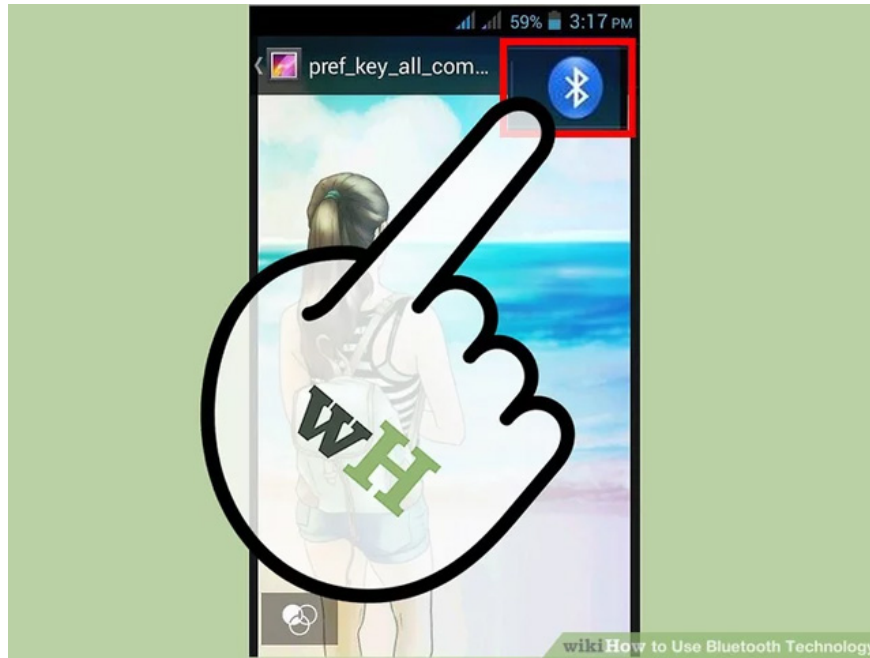


Windows XP often requires the disk to be included with the adapter, just like the one for the Mini adapter provided by Belkin. Insert the disc in the drive and follow the instructions to install.



Use Bluetooth technology

Transfer files between devices



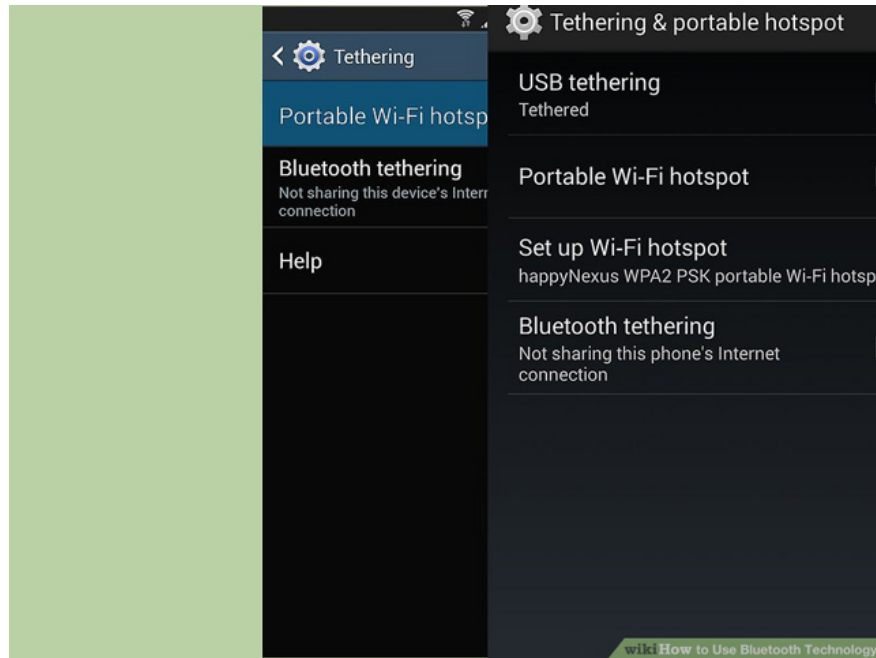
Some Bluetooth devices will allow you to transfer files and documents from one device to another. For example, if your friend has a series of beautiful photos on their camera, you can pair it with your phone to quickly get a copy of them. You can transfer files between mobile phones, cameras and camcorders, computers, TVs and many other devices.

Use Bluetooth technology to talk on the phone



Bluetooth headsets can be paired with some landlines or mobile phones to talk to hands-free phones.

Share mobile networks for other devices



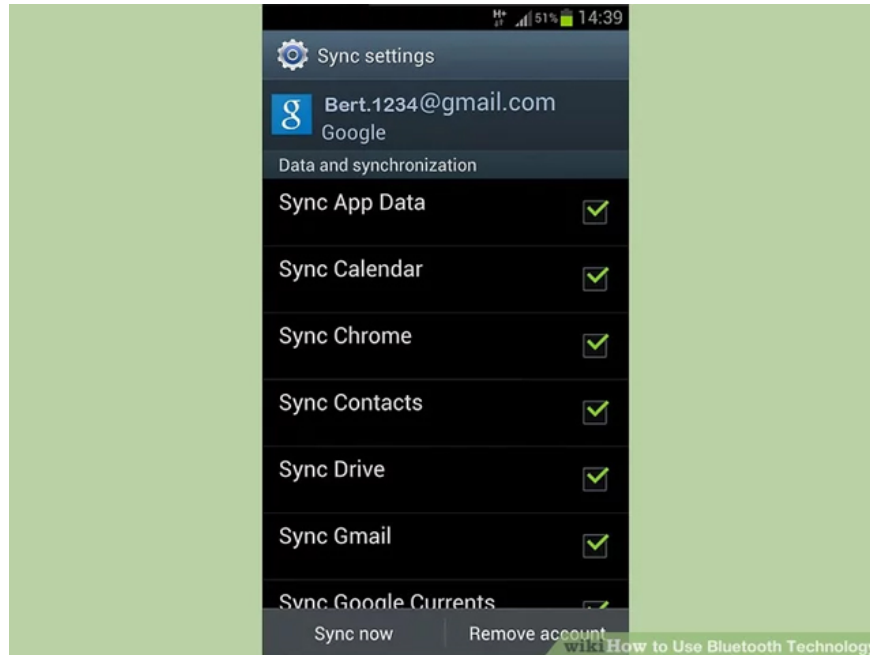
Tethering device allows you to share the mobile network with the desktop, so that you can perform web browsing on the computer without connecting to the Wifi network. Not all devices allow Internet sharing so you should check with your mobile service provider.

Use Bluetooth to drive safer



Turn on Bluetooth technology directly integrated in your car or wear a Bluetooth headset while driving to keep both hands on the steering wheel. In some areas, keeping the phone on hand while driving is considered illegal. Bluetooth allows you to talk while driving without breaking the law safely. Some phones and car stereos will allow you to play music through this sound system when connecting to your phone via Bluetooth.

Synchronize data between Bluetooth devices



Some devices will allow you to synchronize data such as contacts, email and calendar events. This may be a great way to synchronize your phone contacts with your computer or to transfer data to another phone.

Use Bluetooth devices in small offices



Bluetooth devices can significantly reduce cable usage and allow you to work more freely. Bluetooth keyboard and mouse allows users to type, enter anywhere without losing accuracy. Bluetooth printers allow you to place the printer anywhere without having to worry about pulling the cable from the printer to the computer.

Use a Bluetooth device to customize the sound system



Bluetooth speakers and remote controls can help control and interact with audio facilities more easily. With Bluetooth remote control, you don't need to point it to the TV to use. Bluetooth speakers allow you to set up a surround sound system without having to run speaker wires around the living room. To set up a Bluetooth audio system, you will need a Bluetooth receiver.

Use Bluetooth to protect your home or car



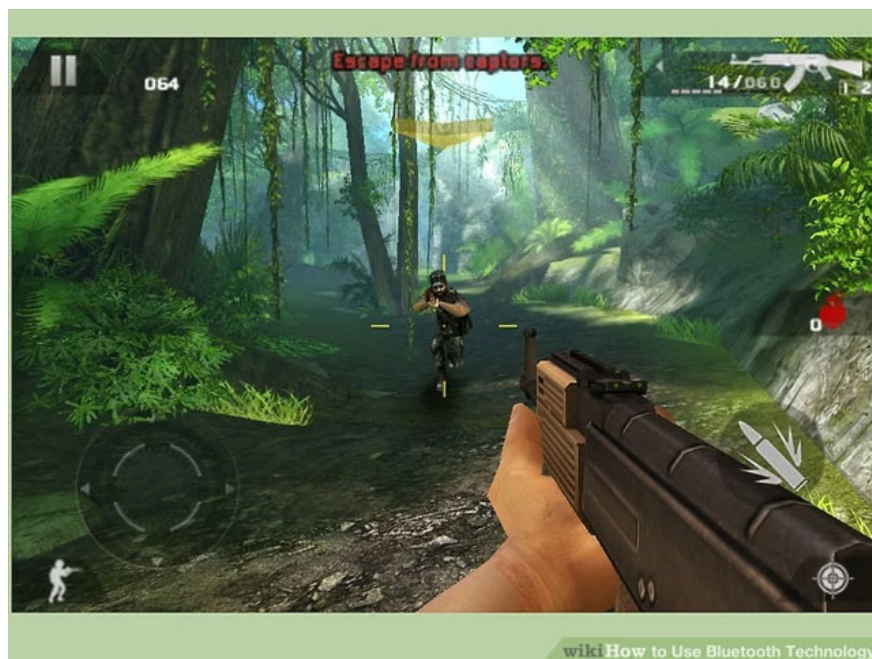
Bluetooth technology available in wireless systems can unlock your home or car by clicking the button on the smartphone.

Connect PlayStation to computer



If your computer has Bluetooth, you can connect to a PlayStation 3 or 4 controller to use gamepad for PC games. Sony does not support this feature and requires the use of third-party software, but is relatively easy to set up.

Play multiplayer games



Bluetooth allows you to create a local area network between two phones, this is a quick and easy way to set up multi-player game sessions. Although this only works if you are in the same room, it is much more reliable than playing on the Internet.

See more:

1. 6 ways to fix Bluetooth errors not in Device Manager on Windows 10, 8.1, 8, 7, XP, Vista
2. How to download and update Bluetooth drivers for Windows 10
3. What to do when the device does not receive a Bluetooth device?

You finished reading the article "**Instructions for using Bluetooth on devices**" edited by the [TipsMake](#) team. We hope this article has provided you with many useful tech tips and tricks. You can search for similar articles on tips and guides. Thank you for reading and for following us regularly.