

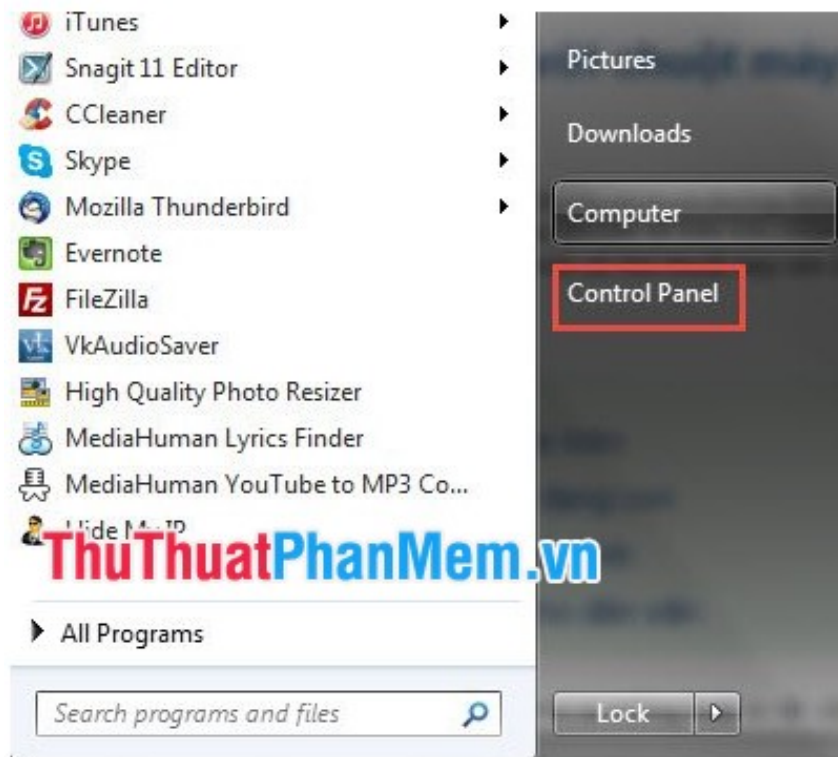
Instructions for using a replacement keyboard for a broken mouse

If your mouse is broken but has not been repaired or replaced, you can temporarily use the keyboard to replace the mouse as instructed below: Instructions for setting the number keys on the right hand side of the keyboard instead of the mouse:

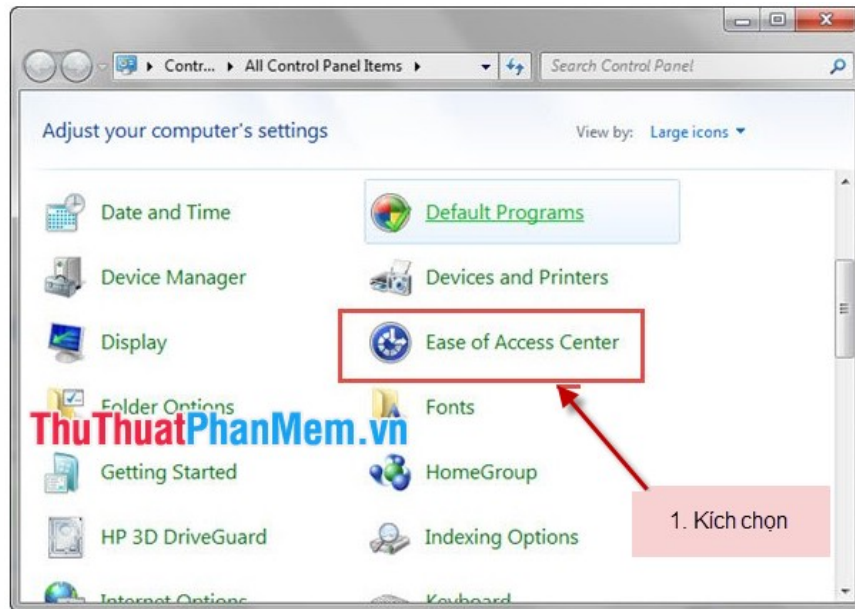
If your mouse is damaged but has not been repaired or replaced, you can temporarily use a keyboard to replace the mouse as instructed below.

Instructions for setting the number keys on the right hand side of the keyboard to use instead of the mouse:

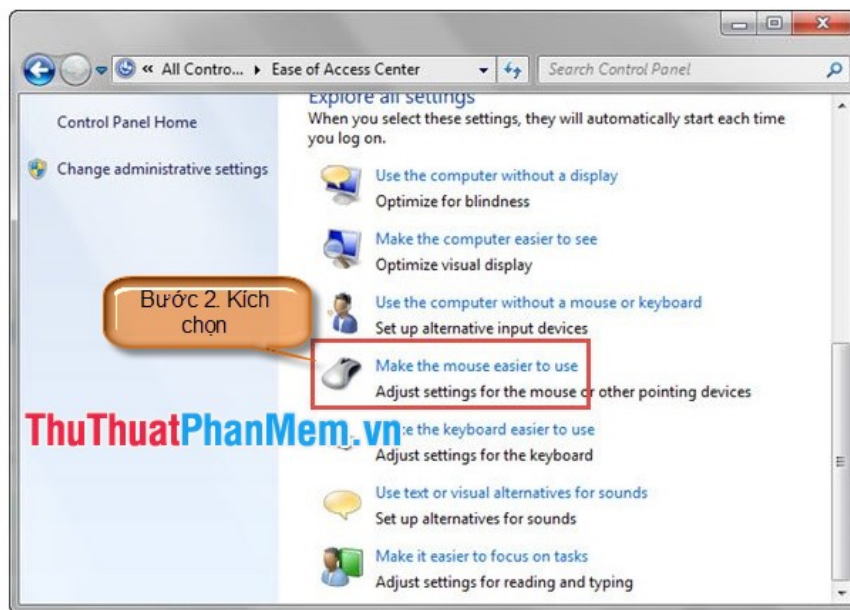
Click **Start -> Control Panel** .



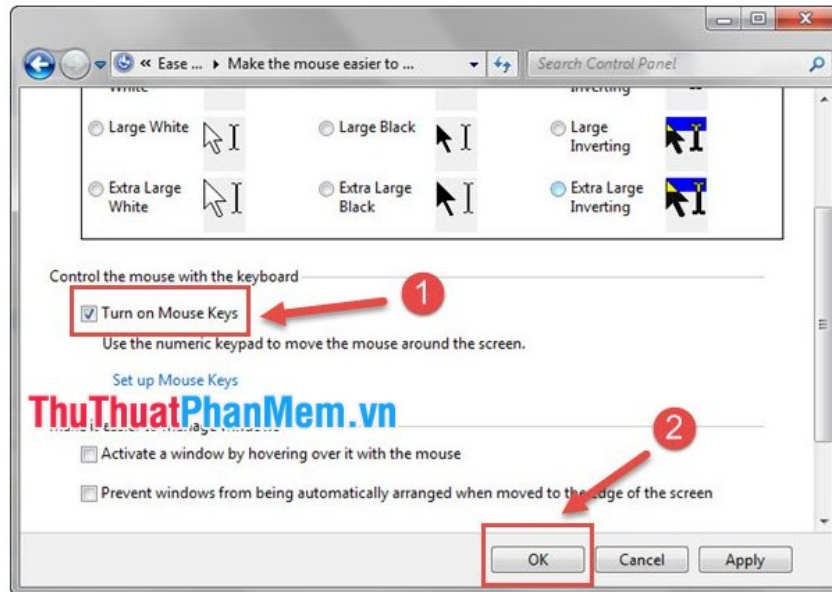
The dialog box appears, click on the **Ease of Access Center** section .



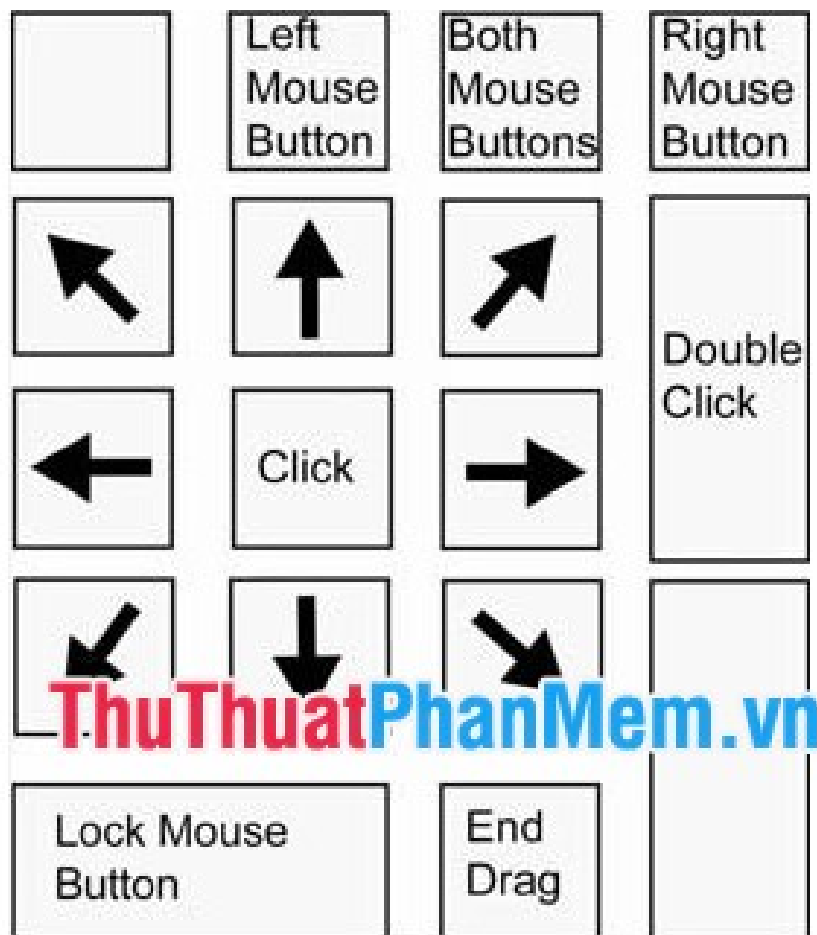
Make sure you click Make the mouse easier to use .



Turn on the mode using the mouse by locking by checking the Turn on Mouse Key and then clicking **OK** to complete the setup.



Note after creating the area to the right of the keyboard to undertake the task of the mouse. We have the following mouse control diagram:



Good luck!

You finished reading the article "**Instructions for using a replacement keyboard for a broken mouse**" edited by the [TipsMake](#) team. We hope this article has provided you with many useful tech tips and tricks. You can search for similar articles on tips and guides. Thank you for reading and for following us regularly.
