

# Instructions for turning on Dark Mode on Office 2019

Dark Mode is a feature that allows users to convert Office 2019 to a dark background interface mode. This helps reduce eye strain and improve the working experience in low light environments. Dark Mode is integrated to optimize comfort when working at night or in low light conditions. Here's how to turn on dark mode on Office 2019.

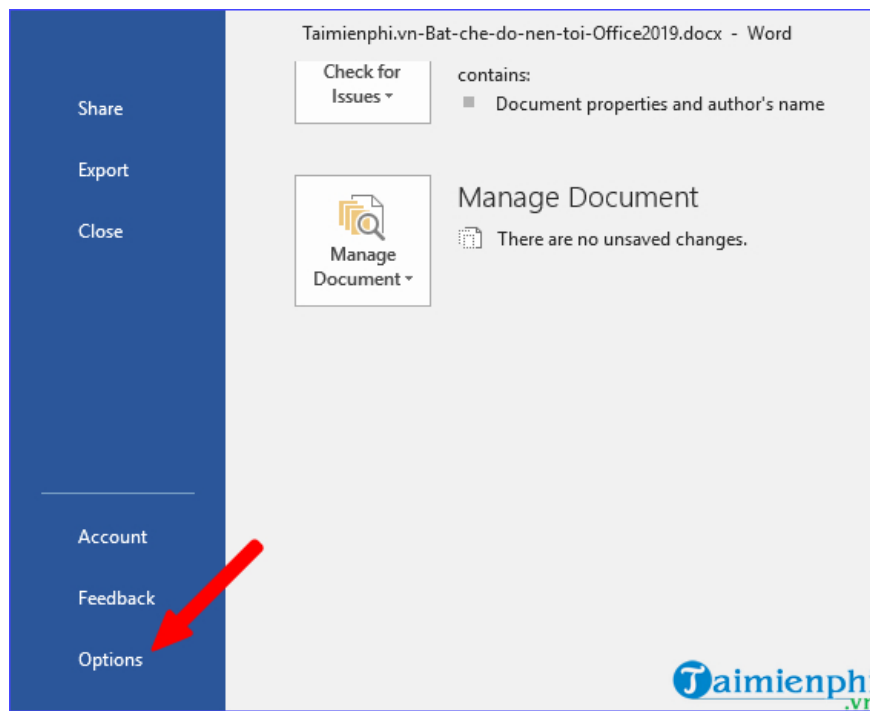
If you want to turn on dark mode on Office 2019, change the Office 2019 background to black, you can go to the general settings and select the Dark Mode feature (Dark Theme), the user interface will change to a different color instead of white. as usual. Remember, you can only make adjustments after you have activated Office 2019.

## *How to turn on dark color mode on Office 2019*

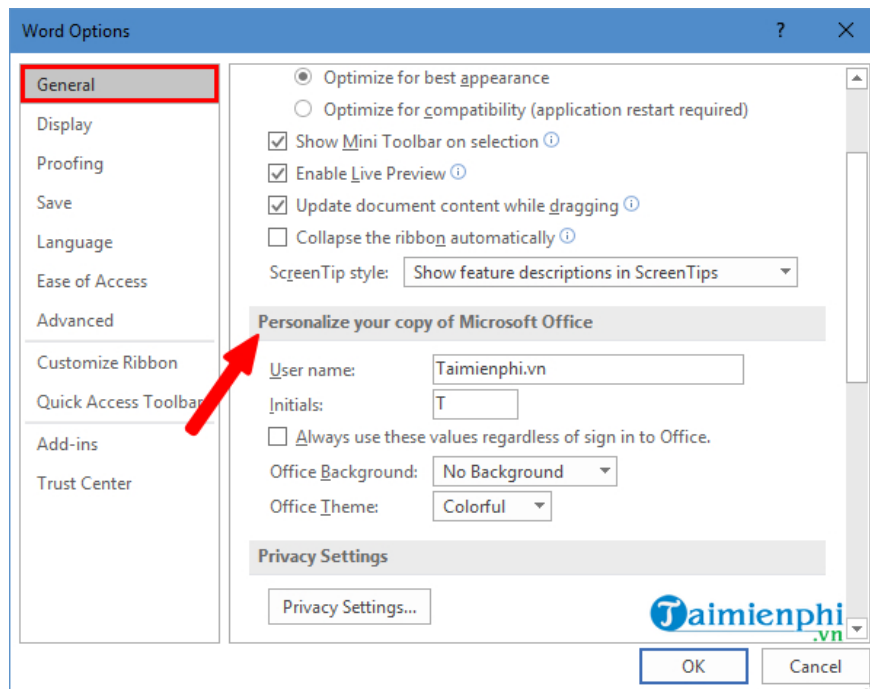
To activate the Dark theme on Office 2019, users only need to open Word or Excel or Powerpoint. to activate. When you successfully activate it on Word, for example, dark mode will be automatically enabled on other applications such as Excel, Powerpoint.

### *1. Change office 2019 dark background via Options*

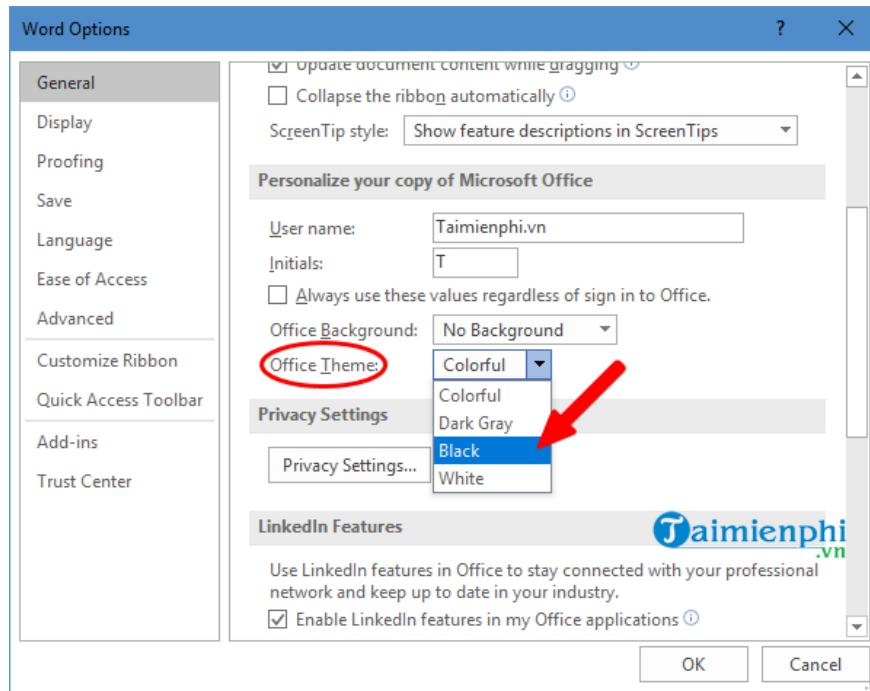
**Step 1:** First, open Word -> click on the **File** menu -> **Options**



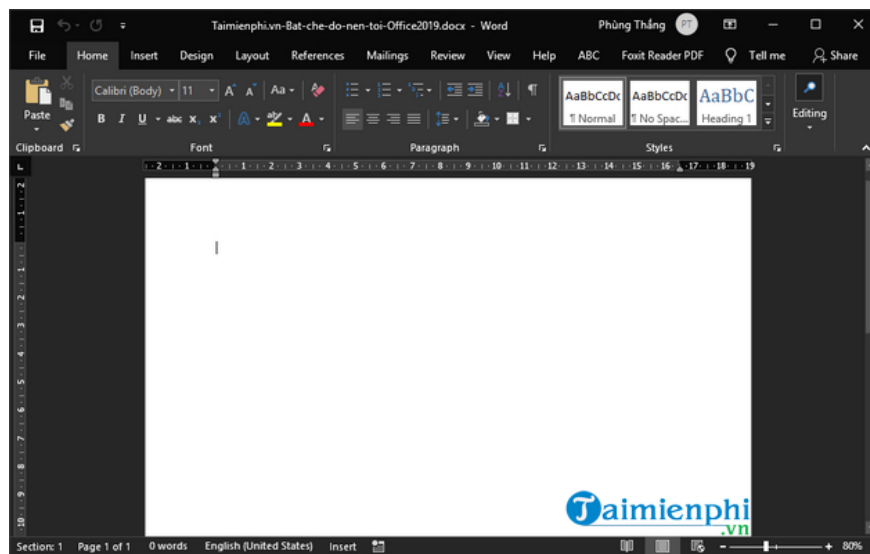
**Step 2:** At the new display interface, **General** -> look to the right -> find the **Personalize your copy of Microsoft Office** section .



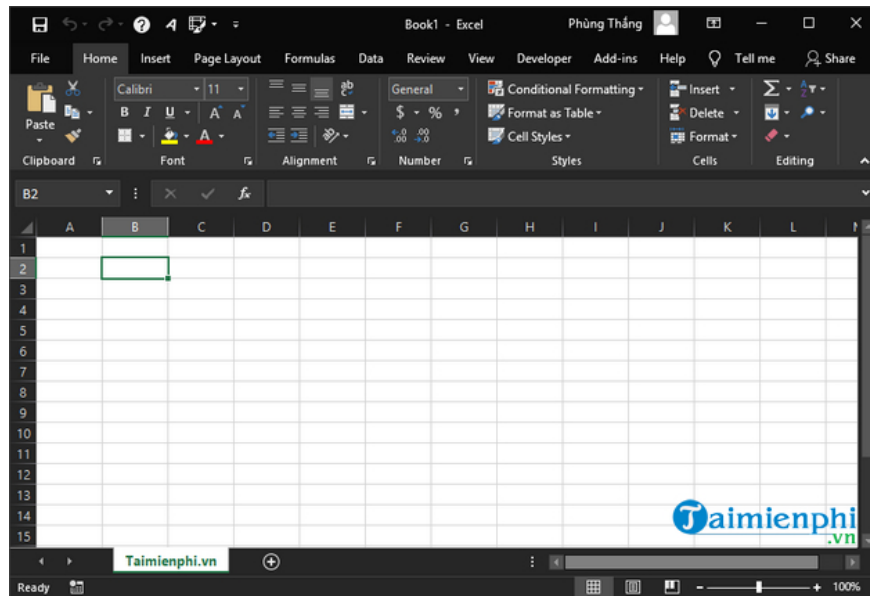
**Step 3:** In the **Office Theme** section , by default the color interface will be **Colorful** . To switch to the Dark theme -> click on the triangle icon and select **Black** . Finally, click **OK** to save.



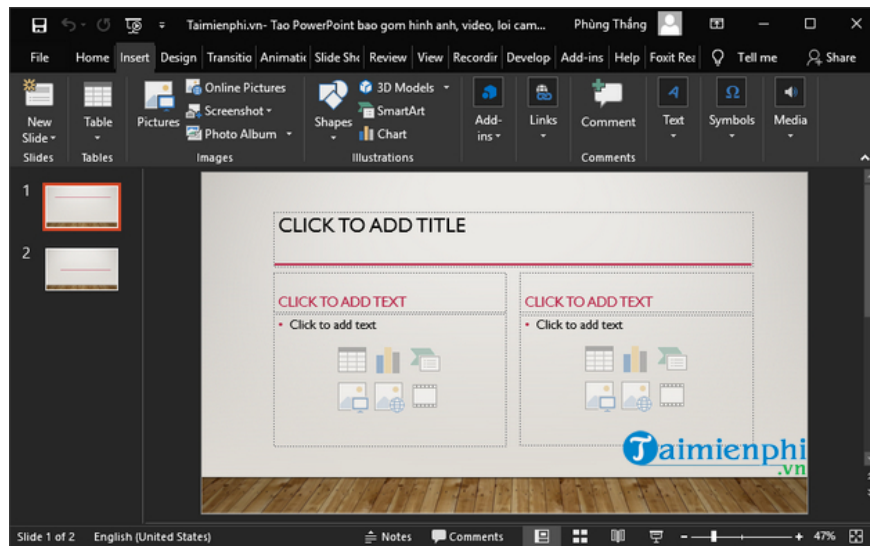
As a result, the Word program interface will automatically change to a black background as shown in the image below. Optional items will still be written in white text so that users can easily choose when working.



When you open Excel, you will also see a dark background interface like Word in the image below:

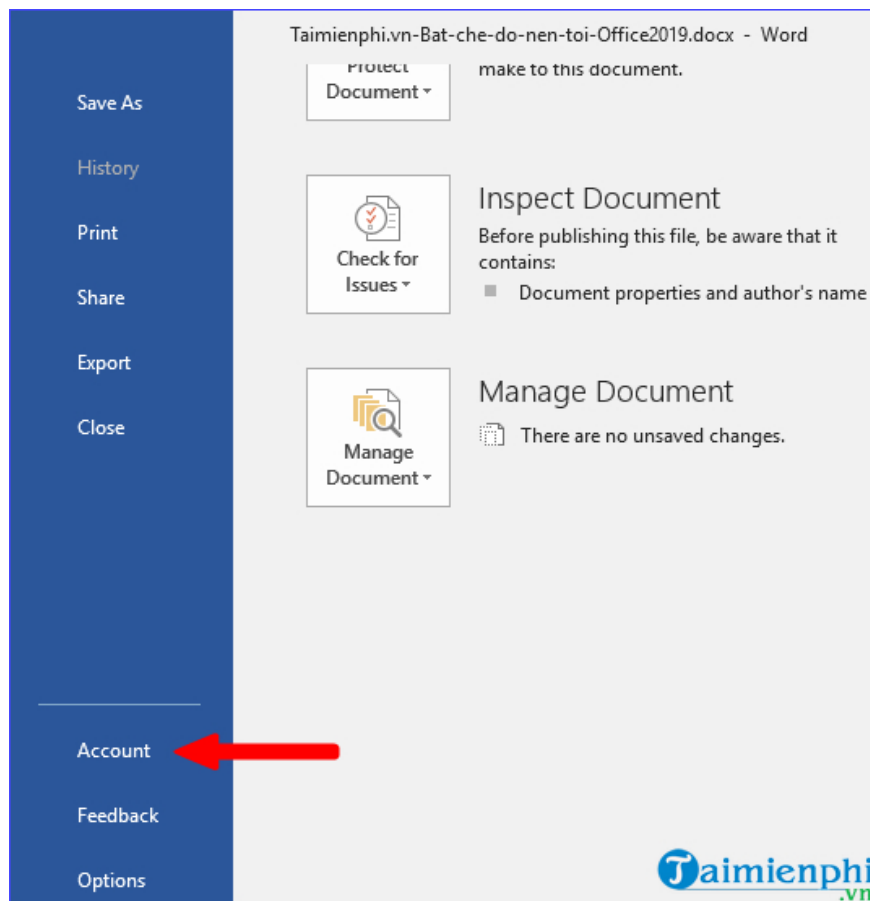


The same goes for Powerpoint when you open it:

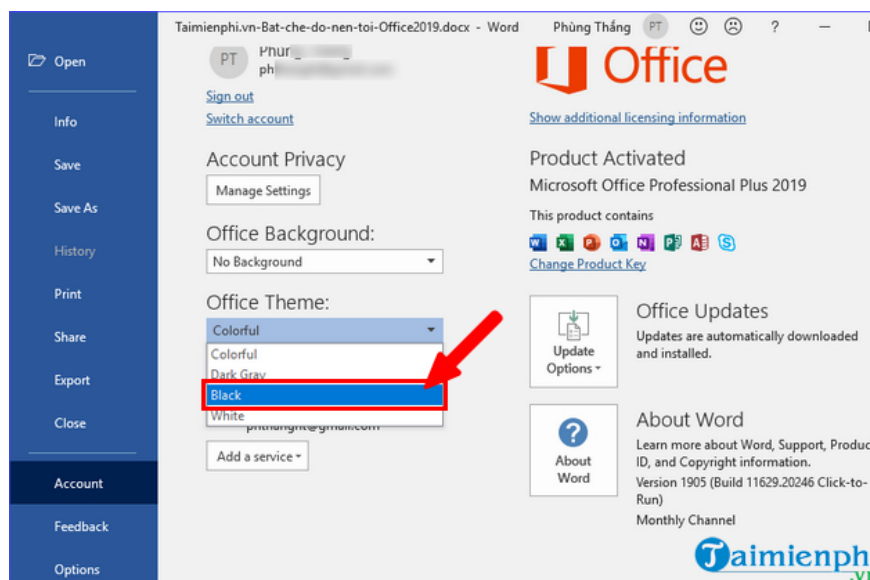


## 2. Turn on Office 2019 dark background in Account

**Step 1:** Also in the Office 2019 interface -> click on the **File** menu to display the list of options -> then click on **Account** .



**Step 2:** You also look to the right and will see the **Office Theme** section -> click and select **Black** to switch to a dark background. And as a result, you will also switch to dark mode on Office 2019 the same way as done above.



With the above two methods, it quickly helps users easily **turn on dark mode on Office 2019** for use. If you want to change the theme, please follow the instructions above to immediately get the black background as desired.

For those of you who want to change the language, **install Vietnamese for Office 2019** to replace the default language of English, it is not too complicated for you to do. Please follow the instructions that TipsMake has introduced to install and set up not only Vietnamese but also any other language if you want.

You finished reading the article "**Instructions for turning on Dark Mode on Office 2019**" edited by the [TipsMake](#) team. We hope this article has provided you with many useful tech tips and tricks. You can search for similar articles on tips and guides. Thank you for reading and for following us regularly.