

Instructions for setting up and managing Network Bridge on Windows 10

When there is no port available on the router, Wifi cannot be connected. In this case you can use Network Bridge on Windows 10 to join other computers to the network connection.

When there is no port available on the router, Wifi cannot be connected. In this case you can use Network Bridge on Windows 10 to join other computers to the network connection.

Network Bridge is an integrated feature for a long time on Windows. Bridge allows you to connect 2 or more Network Segments together to allow devices to connect to the network in case it cannot be directly connected on the Router or Switch.

1. Some notes before starting

Before starting to set up Bridge Connection on Windows 10, you need at least 2 network adapters. One to use the Internet connection and one to connect to another computer.

Also when setting up Connection Bridge on Windows 10 (or on previous Windows versions), the main network adapter on the server will lose Internet connection.

To regain access to the Internet, you must set up a static IP address (Static IP address) manually.

The first thing you need to do is save the current IP address information of the DHCP server on the local network (Local Network).

To view the current IP address information, follow the steps below:

1. Press **Windows + X** key combination to open the Power User Menu and select **Command Prompt**.
2. Enter the command line below into the Command Prompt window and press Enter:

ipconfig / all

3. Note again configuring the IP address that the network adapter (Network Adapter) connects to the Internet.

Note some information such as: IPV4, subnet mask, default gateway, and DNS servers address.

```
Command Prompt
Host Name . . . . . : DESKTOP-5AV1KC7
Primary Dns Suffix . . . . . :
Node Type . . . . . : Hybrid
IP Routing Enabled. . . . . : No
WINS Proxy Enabled. . . . . : No

Ethernet adapter Ethernet1:

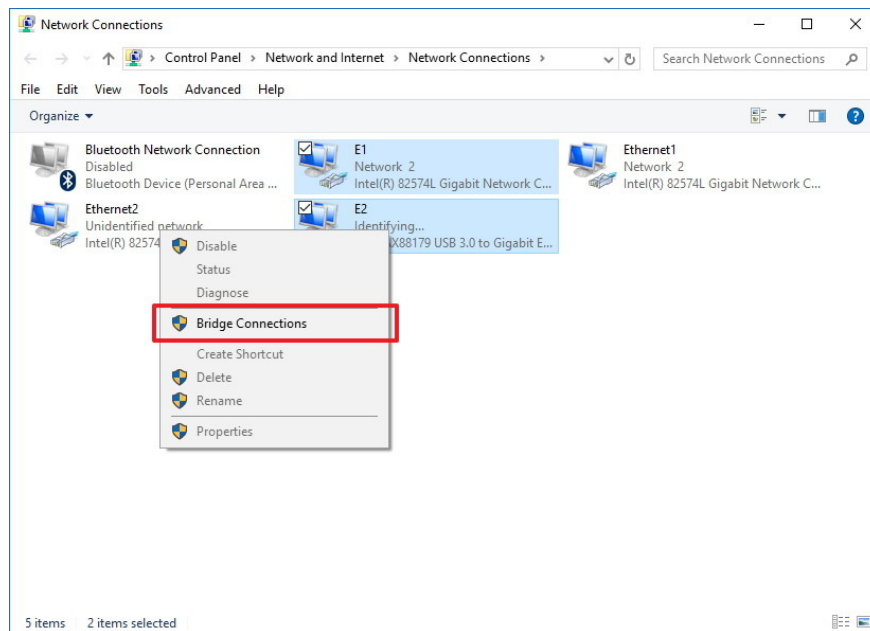
Connection-specific DNS Suffix . . :
Description . . . . . : Intel(R) 82574L Gigabit Network Connection #2
Physical Address. . . . . : 00-0C-29-56-BF-D1
DHCP Enabled. . . . . : Yes
Autoconfiguration Enabled . . . . : Yes
Link-local IPv6 Address . . . . . : fe80::a877:d628:c9b0:515%8(Preferrred)
IPv4 Address. . . . . : 10.1.1.3(Preferrred)
Subnet Mask . . . . . : 255.255.255.0
Lease Obtained. . . . . : Tuesday, March 15, 2016 12:00:15 PM
Lease Expires . . . . . : Wednesday, March 16, 2016 12:41:33 PM
Default Gateway . . . . . : 10.1.1.1
DHCP Server . . . . . : 19.1.1.1
DHCPv6 IAID . . . . . : 436210729
DHCPv6 Client DUID. . . . . : 00-01-00-01-1E-61-43-C3-00-0C-29-46-8E-FC
DNS Servers . . . . . : 8.8.8.8
                        10.1.1.1
NetBIOS over Tcpip. . . . . : Enabled

Ethernet adapter Ethernet:

Connection-specific DNS Suffix . . :
Description . . . . . : Microsoft Network Adapter Multiplexor Driver
```

2. How to create Network Bridge on Windows 10?

1. Press **Windows + X** key combination to open the Power User Menu, then select **Network Connections** .
2. Select both the network adapter (network adapter) connected to the Internet and the network adapter you want to use to connect Bridge.
3. Right-click and select **Bridge Connections** .

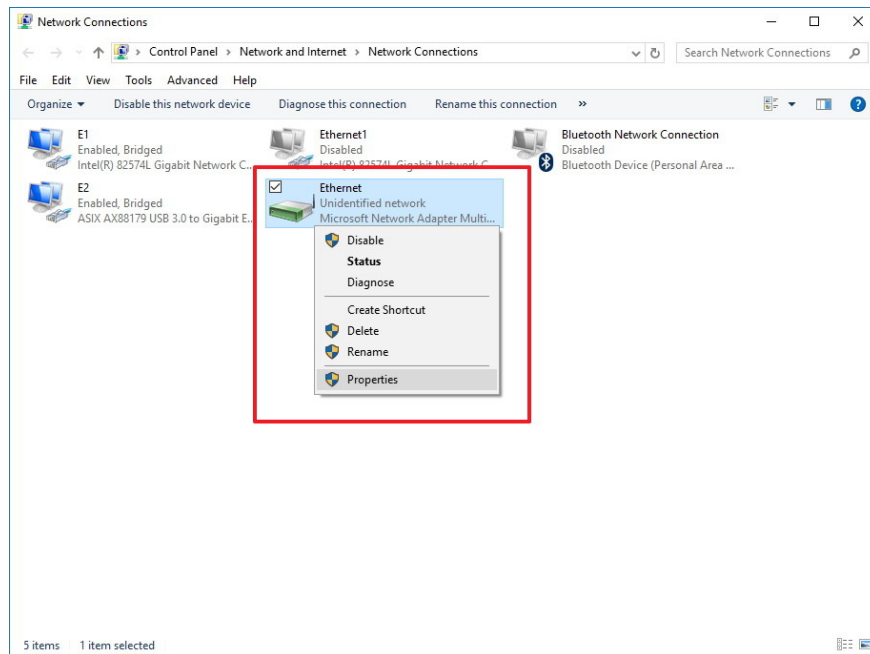


At this point, the devices connected on the Bridge port can access the network and the Internet with the router IP address information. However, the Bridge host computer cannot access the Internet unless there is a 3rd network adapter connected to the network or a static IP address.

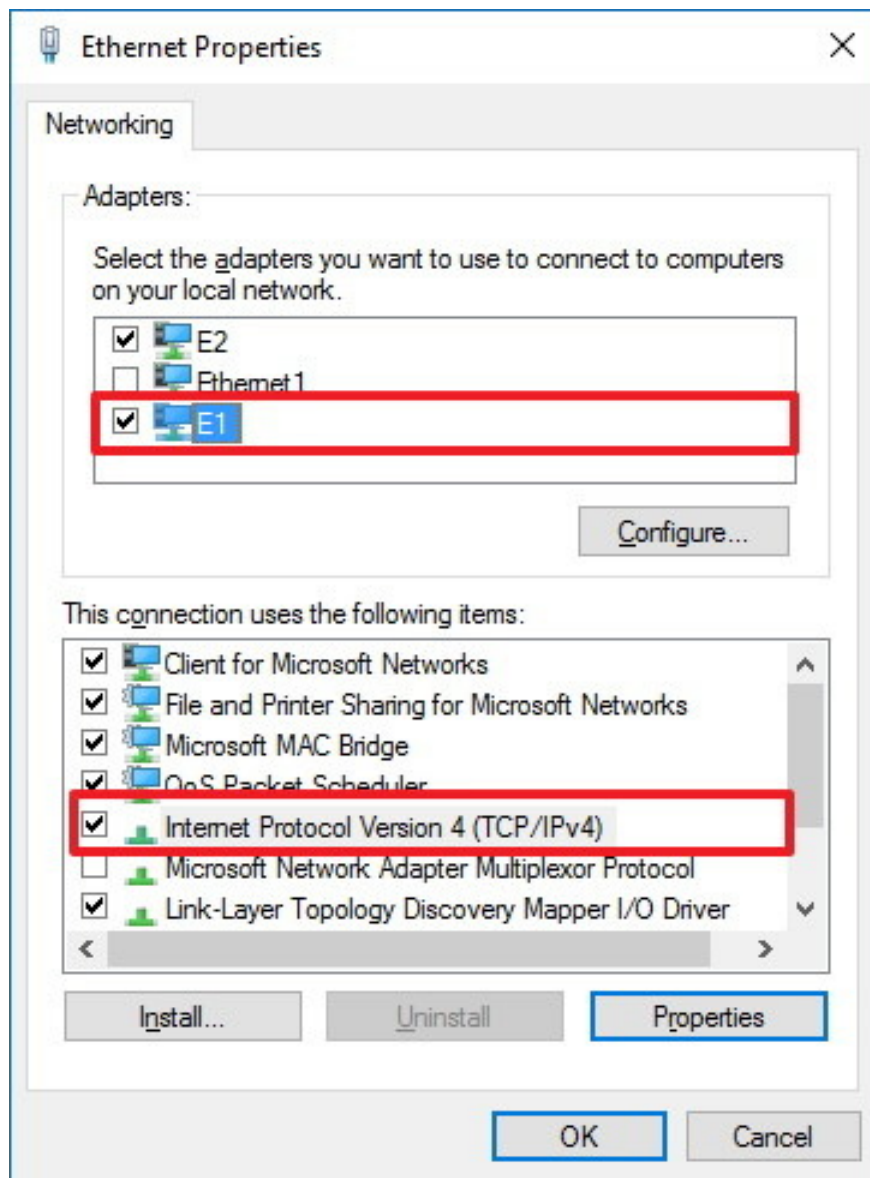
3. How to regain Internet access after setting Bridge?

To access the Internet connection right from the server, follow the steps below:

1. Press **Windows + X** key combination to open the Power User Menu and select **Network Connections**.
2. Right-click the **Adapter Bridge** and select **Properties** .

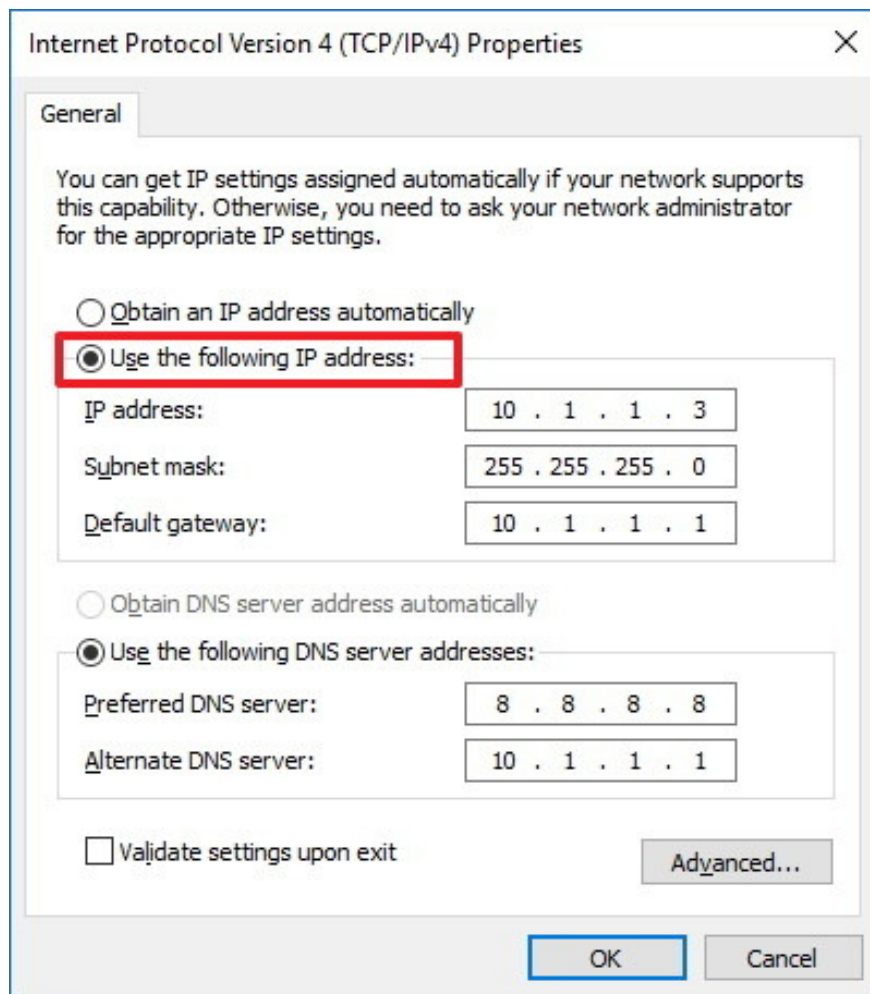


3. Select the network adapter to connect to the Internet.
4. Select **Internet Protocol Version 4 (TCP / IPv4)** .
5. Click **Properties**.



6. Select the **Use the following IP address** option .

7. Use the IP address information that you note in the above instructions to assign to a static IP address.

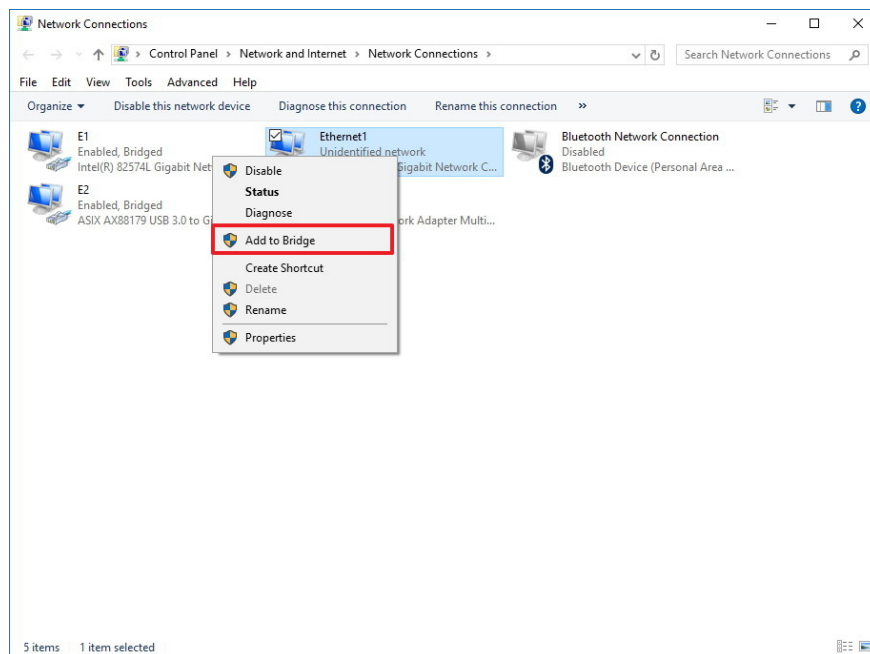


7. Click **OK** .

8. Click **Close** to finish.

4. How to add one or more other network adapters to Network Bridge?

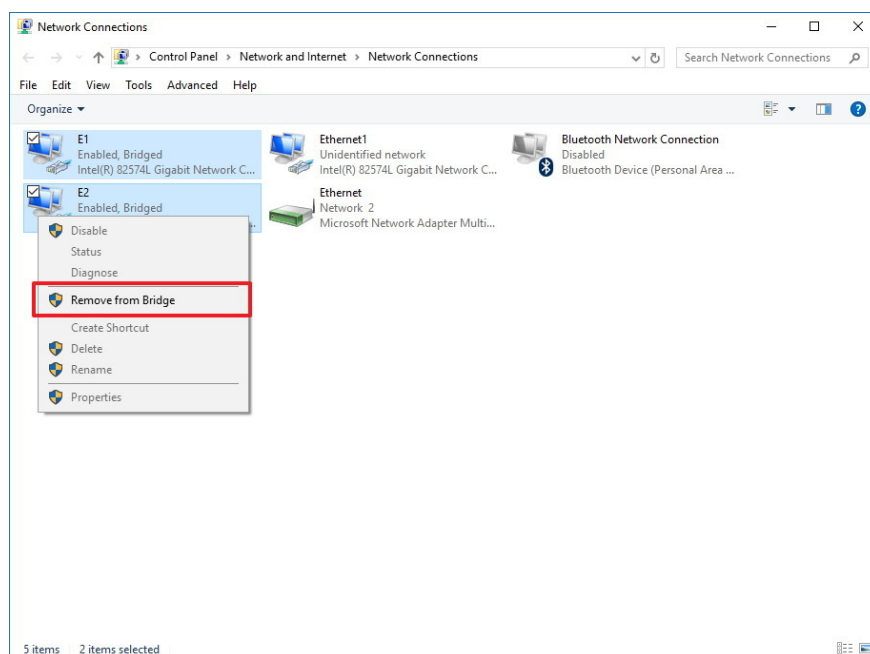
1. Right-click the network adapter and select **Add to Bridge** .



2. Connect a game controller or another computer, the device will automatically be set up from the local Router (Local Router).

5. Delete the Bridge setting from the computer

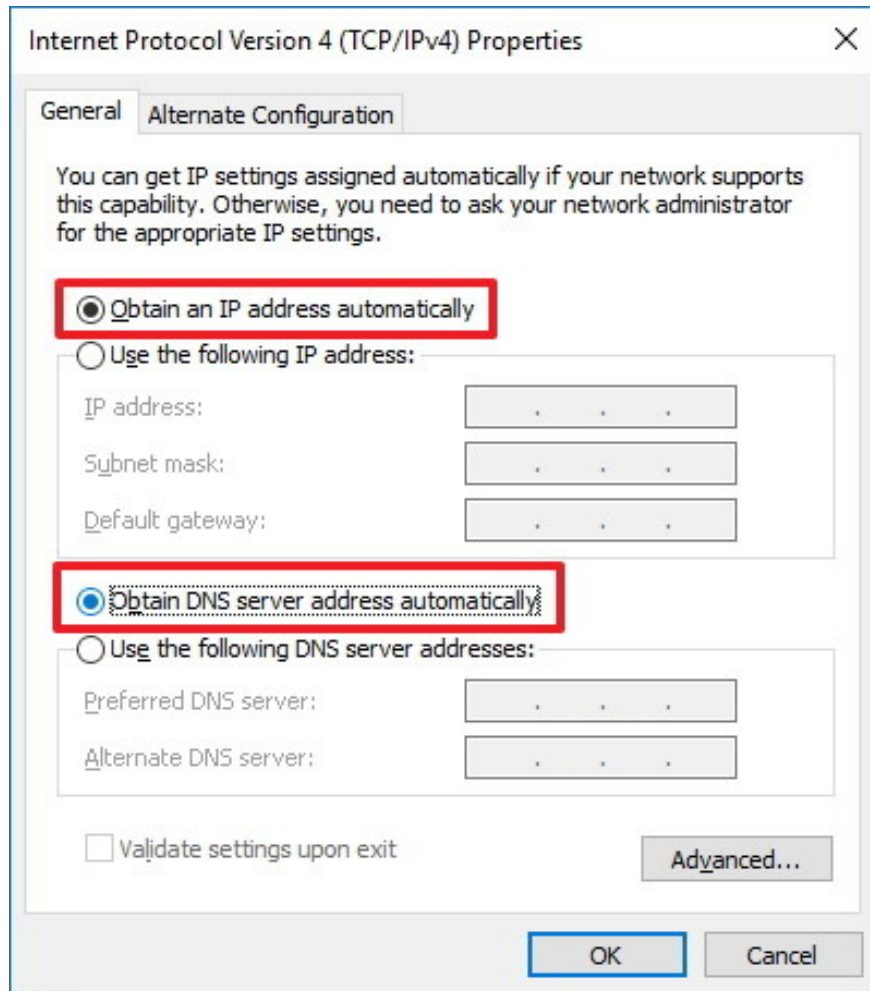
If you do not need to use the Bridge connection, you can select 1 or select all network adapters and then select **Remove from Bridge**.



Now you can see that the Adapter Bridge no longer appears on Network Connections. If the Adapter Bridge still appears, you only need to restart your computer.

The final step is to proceed with deleting the static IP address setting.

1. Right-click the network adapter, and then select **Properties** .
2. Select **Internet Protocol Version 4 (TCP / IPv4)** .
3. Click **Properties** .
4. Select the **Obtain an IP address option automatically** .
5. Select **Obtain DNS server address automatically** .



6. Click **OK** .

7. Click **Close** to complete the process.

Refer to some of the following articles:

1. **Instructions for completely removing Onedrive application on Windows 10**

2. **Trick to speed up Windows 10 computers**

3. **Trick to speed up Start Menu on Windows 10**

Good luck!

You finished reading the article "**Instructions for setting up and managing Network Bridge on Windows 10**" edited by the [TipsMake](#) team. We hope this article has provided you with many useful tech tips and tricks. You can search for similar articles on tips and guides. Thank you for reading and for following us regularly.
