

# Instructions for setting static IP addresses, changing DNS

Set static IP addresses for each computer on the same local network to avoid address conflicts between computers. Also can change the DNS address to access the web with fast speed and to some blocked websites such as facebook ...

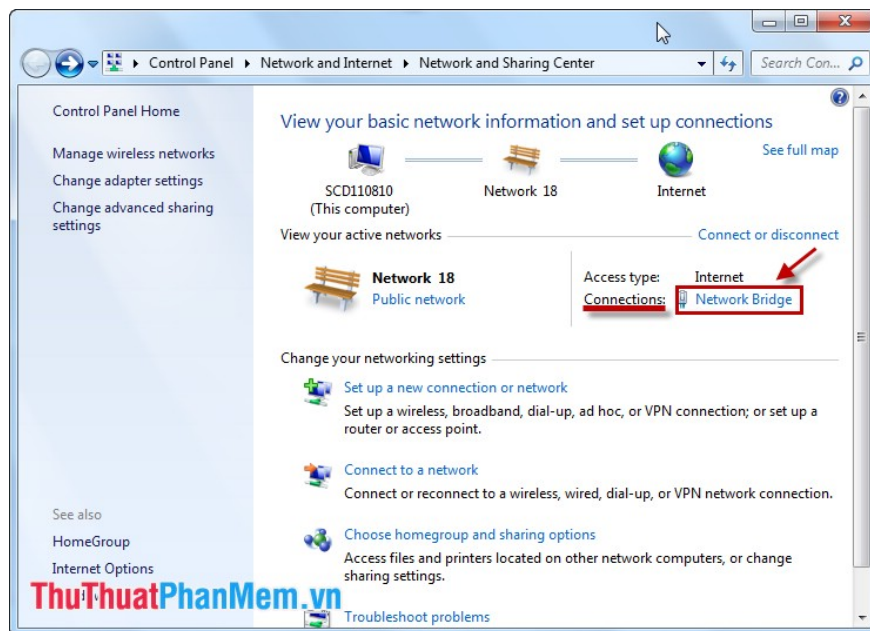
When using the network you usually leave the computer to automatically recognize the IP address, which means using dynamic IP. However, you can set up static IP addresses for each computer on the same local network to avoid address conflicts between computers. Also can change the DNS address to access the web with fast speed and to some blocked websites such as facebook .

Here I would like to introduce you how to set a static IP address and change DNS for computers.

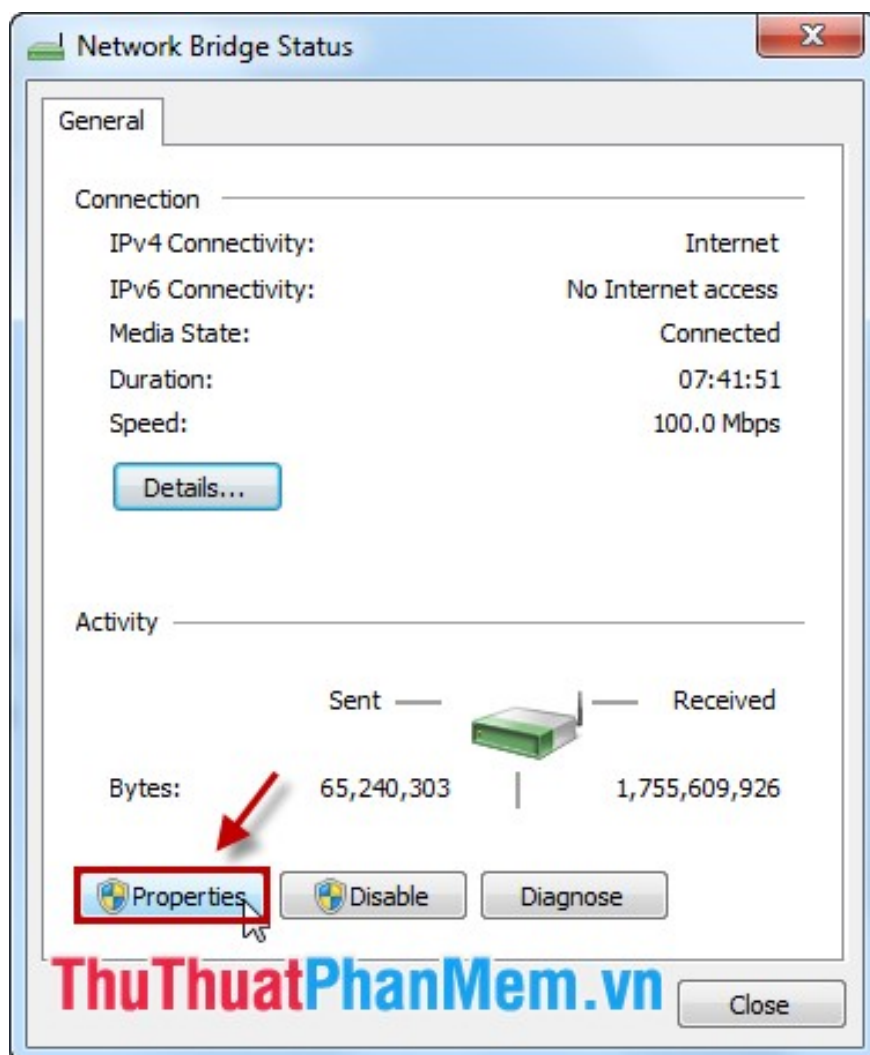
**Step 1:** Select the network icon under the Taskbar, then select **Open Network and Sharing Center** .



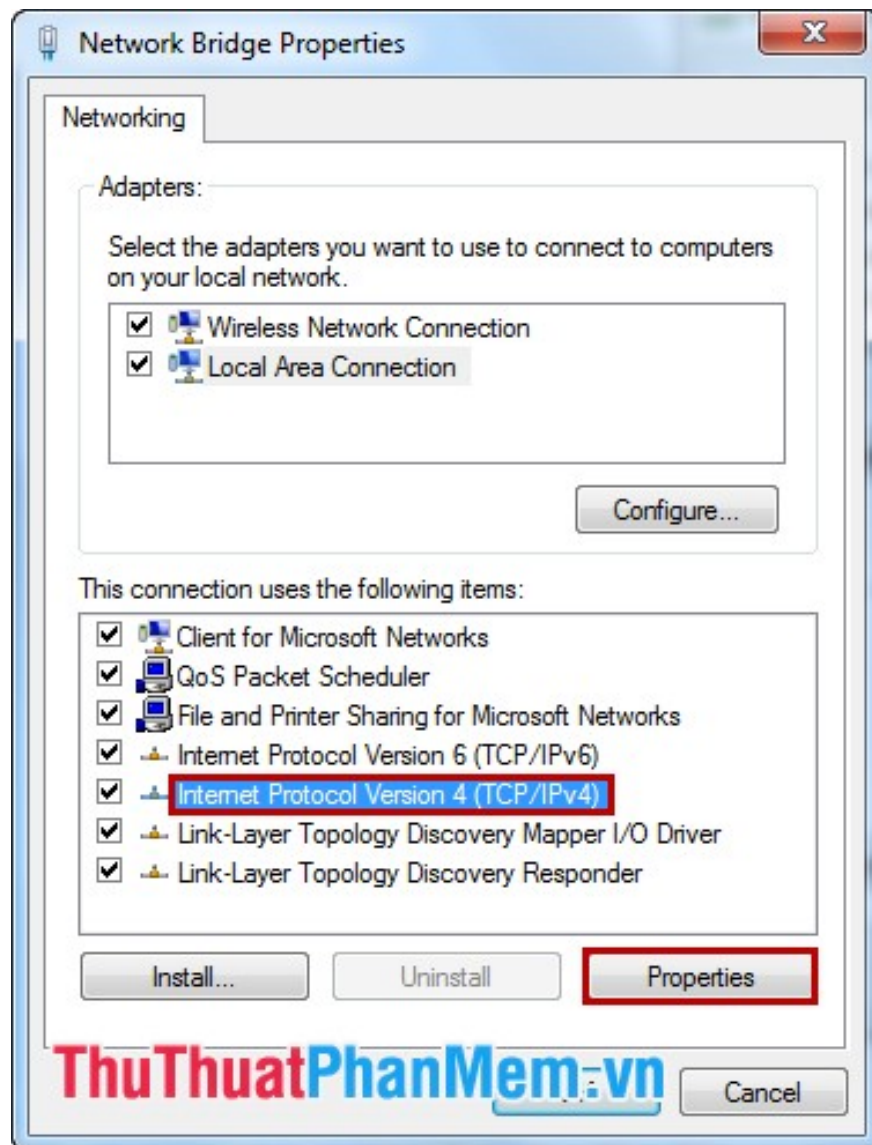
**Step 2:** Choose networks at **Connections** .



**Step 3:** Next, select **Properties** .



**Step 4:** In *this connection uses the following items*, select **Internet Protocol Version 4 (TCP / Ipv4)** and select **Properties** .



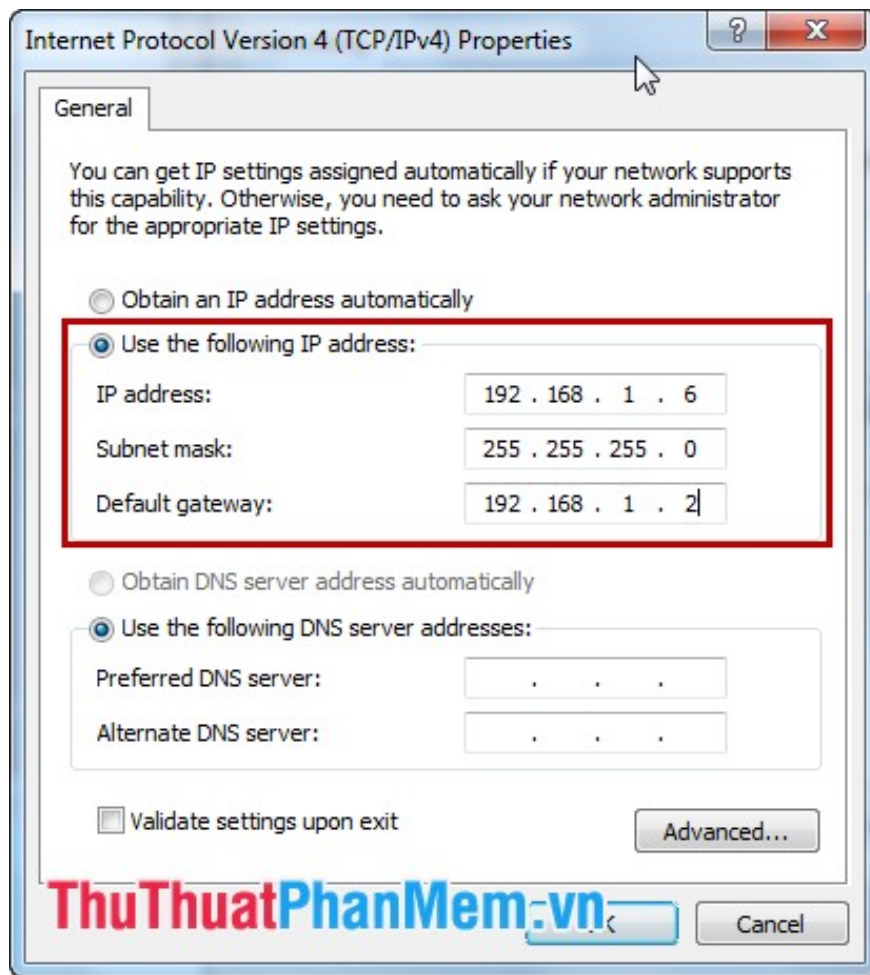
**Step 5:** Set a static IP address for the computer.

You choose **Use the following IP address** . Here you need to enter:

**IP address:** *The first* 3 IP boxes must match the network layer in the local network (same as the modem IP) to access the Internet. The fourth box is the IP of the machine you use, when setting this IP, it cannot be set to coincide with another machine on your local network.

**Subnet mask:** You let the machine fill automatically.

**Default gateway:** As an outbound *gateway* , you need to enter the correct IP of the modem.



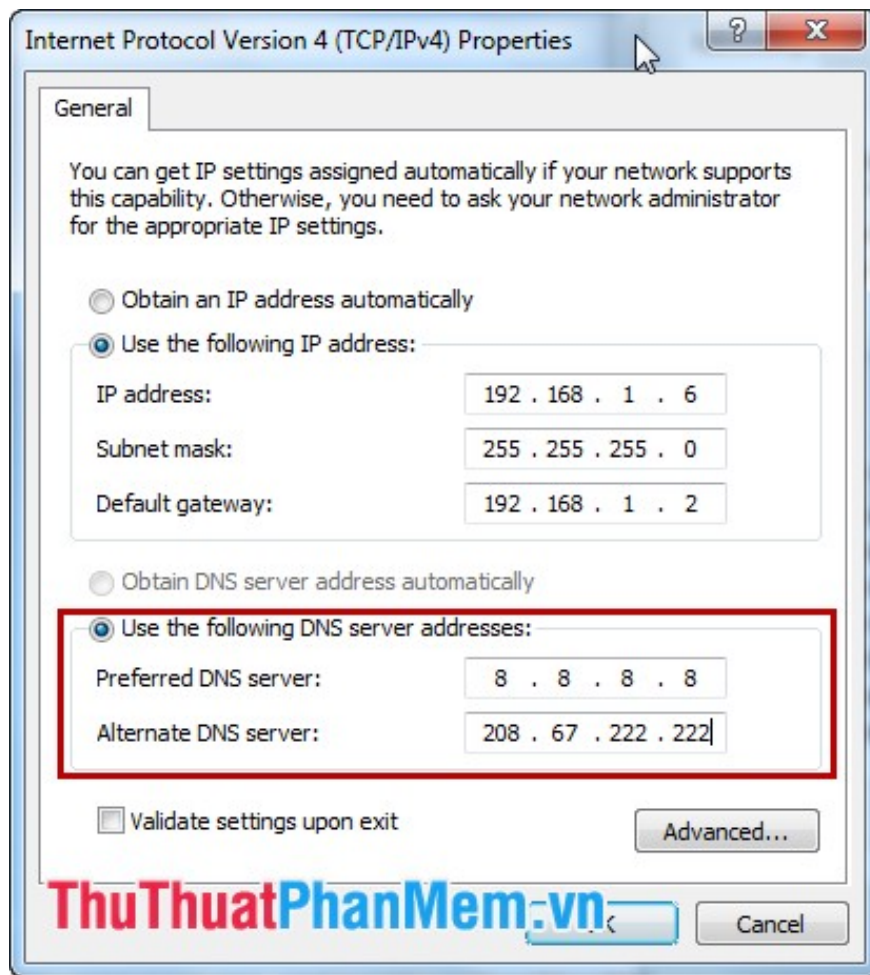
**Step 6:** Set up DNS changes.

You choose **Use the following DNS sever addresses** , then you need to enter:

*Preferred DNS server*

*Alternate DNS server*

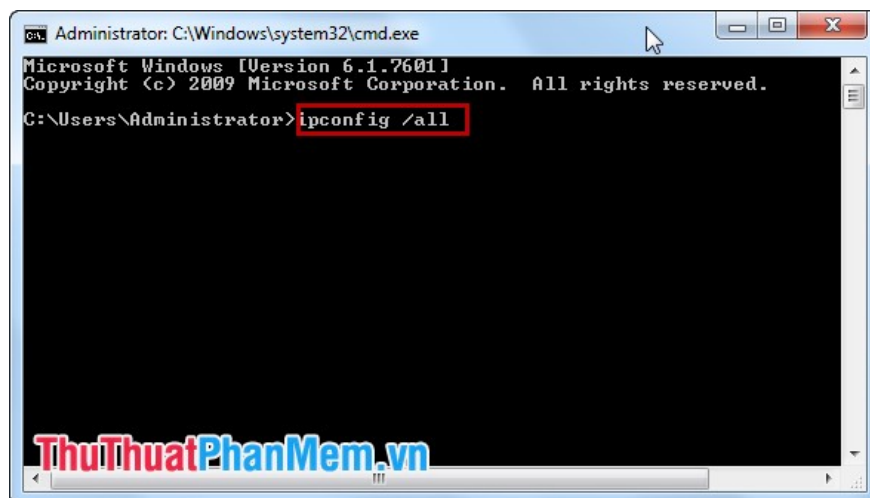
Normally you can use Google DNS or Open DNS as follows:



After making changes, click **OK** to save the settings.

**Step 7:** Check IP and DNS after setting changes.

On **Start** select *cmd.exe* in windows **cmd** you enter *ipconfig [space] /all* and press **Enter** .



Here you will see the IP address and DNS just set.

```
Administrator: C:\Windows\system32\cmd.exe
Node Type . . . . . : Mixed
IP Routing Enabled. . . . . : No
WINS Proxy Enabled. . . . . : No

Ethernet adapter Network Bridge:

Connection-specific DNS Suffix . : 
Description . . . . . : MAC Bridge Miniport
Physical Address. . . . . : 62-EB-69-B8-86-2B
DHCP Enabled. . . . . : No
Autoconfiguration Enabled . . . . : Yes
Link-local IPv6 Address . . . . . : fe80::e436-3dd4-2a9a-4427%15{P
IPv4 Address. . . . . : 192.168.1.6 (Preferred)
Subnet Mask . . . . . : 255.255.255.0
Default Gateway . . . . . : 192.168.1.2
DHCPv6 IPIID . . . . . : 476244841
DHCPv6 Client DUID. . . . . : 00-01-00-01-18-2C-DC-CD-60-EB-
DNS Servers . . . . . : 8.8.8.8
                       208.67.222.222
NetBIOS over Tcpip. . . . . : Enabled

ThuThuatPhanMem.vn 28-4093-8BEF-D2E96D6F83E9>
```

So you have set the static IP address and changed DNS for your computer!

You finished reading the article "**Instructions for setting static IP addresses, changing DNS**" edited by the [TipsMake](#) team. We hope this article has provided you with many useful tech tips and tricks. You can search for similar articles on tips and guides. Thank you for reading and for following us regularly.