

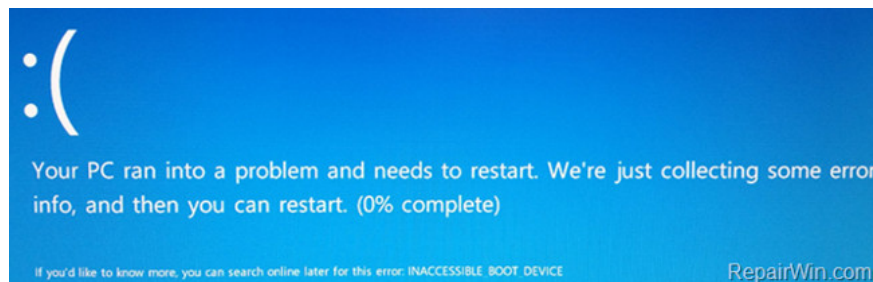
Instructions for quick fix of 'Inaccessible Boot Device' error on Windows 10/8/7 and Windows Vista

Inaccessible Boot Device is a deadly blue screen error (BSOD). This error usually occurs on Windows 10 after the user uses the Reset This PC feature to restore the Windows 10 computer to the default setting state or to refresh (reinstall) Windows 10 without losing the file or after upgrading the system to Windows 10.

"Inaccessible Boot Device" is a deadly blue screen error (BSOD). This error usually occurs on Windows 10 after the user uses the Reset This PC feature to restore the Windows 10 computer to the default setting state or to refresh (reinstall) Windows 10 without losing the file or after upgrading the system to Windows 10.

If an Inaccessible Boot Device error occurs, you will see an error message on the screen: "*Your PC ran into a problem and needs to restart. We're just collecting some error info, và b?n kh?i ch?y l?i. If you like big bi?t thêm, b?n không th? tìm ki?m online sau ?? này l?i: INACCESSIBLE BOOT DEVICE*". When a Windows error occurs, the system partition cannot be accessed at startup.

So how to fix the error, invite you to refer to the following article of Network Administrator.



1. Edit SATA Mode to AHCI on BIOS

1. First open your system power and press the key to access **BIOS Setup** .

Note : The keys commonly used to access **BIOS SETUP** are **DEL**, **F1** or **F2** , depending on the model you use.

2. Find and change **SATA Mode** from **RAID** to **AHCI** .

3. **Save the** changes and **exit** BIOS Setup.

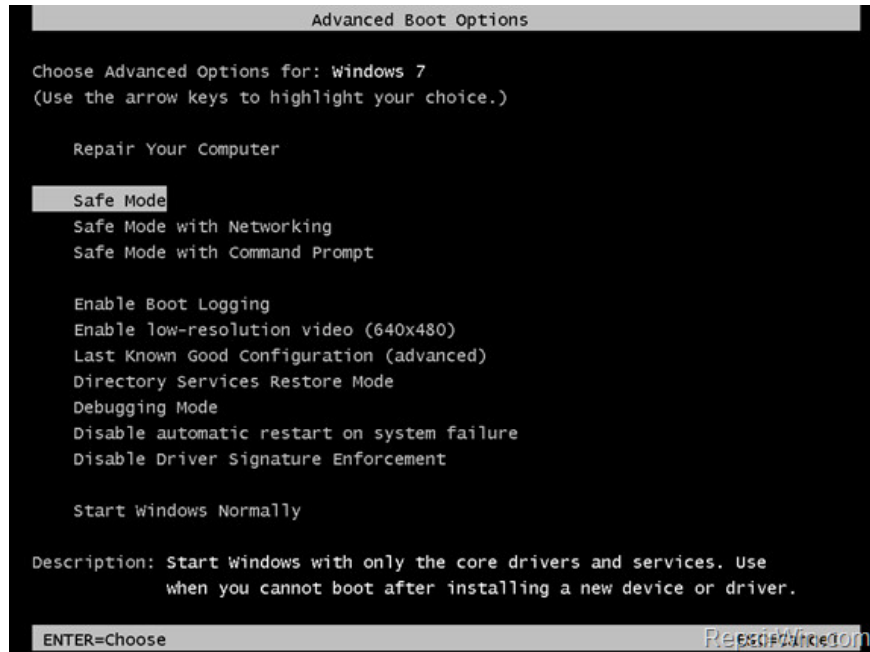
4. Restart your Windows computer in normal mode. If Windows still fails to boot, apply the following solutions.

2. Boot in Safe Mode

Solution With this solution, first start your computer in Safe Mode, then proceed to Restart (restart).

- On Windows 7 and Windows Vista:

1. Open your computer, then press **F8** to open the **Advanced Boot Options** Menu.
2. Use the down arrow key to select the **Safe Mode** option and press Enter.



3. Now that your Windows computer is in Safe Mode, restart your computer and check if Windows has started.

- On Windows 10 / 8.1 / 8

+ Case 1:

If your computer boots normally into Windows or can access the Login screen

1. Press and hold **Shift** then access **Power => Restart** .
2. After your computer starts, select **Troubleshoot => Advanced Options => Startup Settings** .
3. Click **Restart** .
4. After the computer has finished booting, press **F4** key (or key 4) to start Windows in **Safe Mode** .
5. Now that your Windows computer is in Safe Mode, **restart** your computer and check if Windows has started.

+ Case 2:

If Windows cannot boot (cannot access the Login screen):

1. First, create a **USB installation media** drive (according to the version of Windows you use).

Readers can refer to how to create a USB drive containing the Windows XP, 7, 8 and 10 installer here.

2. Start your computer from the Windows installation media USB drive.

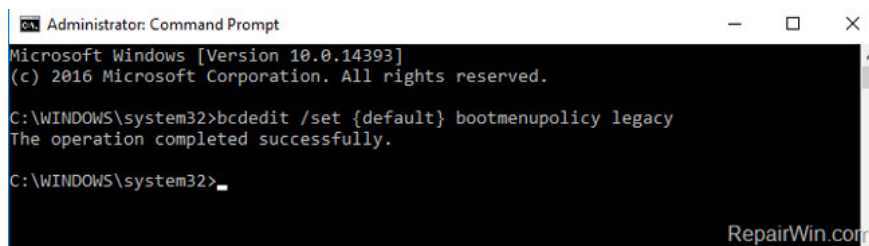
3. On the **Language options** window, select **Next** .

4. Select **Repair your computer** .

5. Next select **Troubleshoot => Advanced Options => Command Prompt** .

6. Now on the Command Prompt window, enter the command below and press Enter:

```
bcdedit / set {default} bootmenupolicy legacy
```



```
Administrator: Command Prompt
Microsoft Windows [Version 10.0.14393]
(c) 2016 Microsoft Corporation. All rights reserved.

C:\WINDOWS\system32>bcdedit /set {default} bootmenupolicy legacy
The operation completed successfully.

C:\WINDOWS\system32>_
```

7. Enter **exit** at the **Command Prompt** to close the Command Prompt window and restart your computer.

8. During the boot process, press the **F8** key to access the **Advanced Boot Options** menu.

9. Use the down **arrow** key to select the **Safe Mode** option and press Enter.

10. Now that your Windows computer is in Safe Mode, restart your computer and check if Windows has booted.

3. Edit SATA Mode settings on the Registry

1. Create a **USB Windows installation media** drive (according to the version of Windows you use).

2. **Start your** computer from the Windows installation media USB drive.

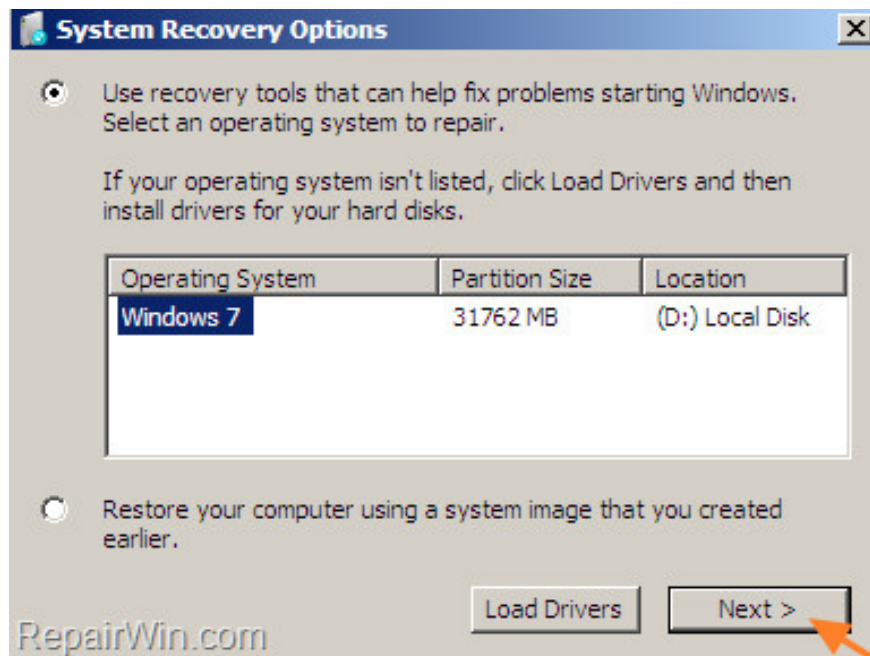
3. On the Language options window, click **Next** .

4. Select **Repair your computer** .

5. Open **Command Prompt** by following the steps below:

- On Windows 7 or Vista:

1. Click **Next** on the next window.

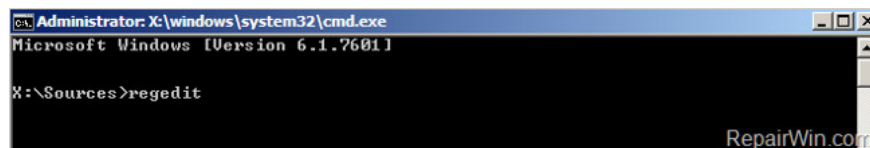


2. Select **Command Prompt** .

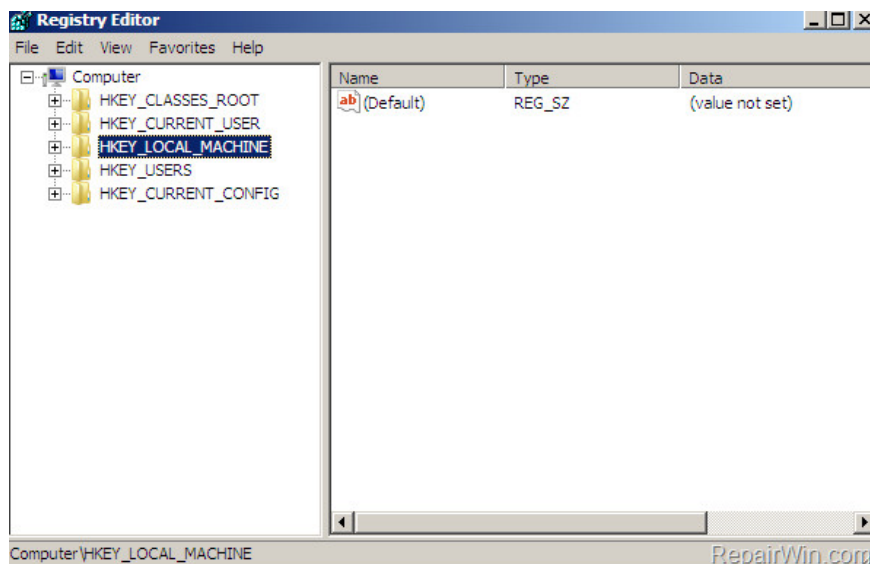
- **On Windows 10 / 8.1 / 8:**

Select **Troubleshoot => Advanced Options => Command Prompt** .

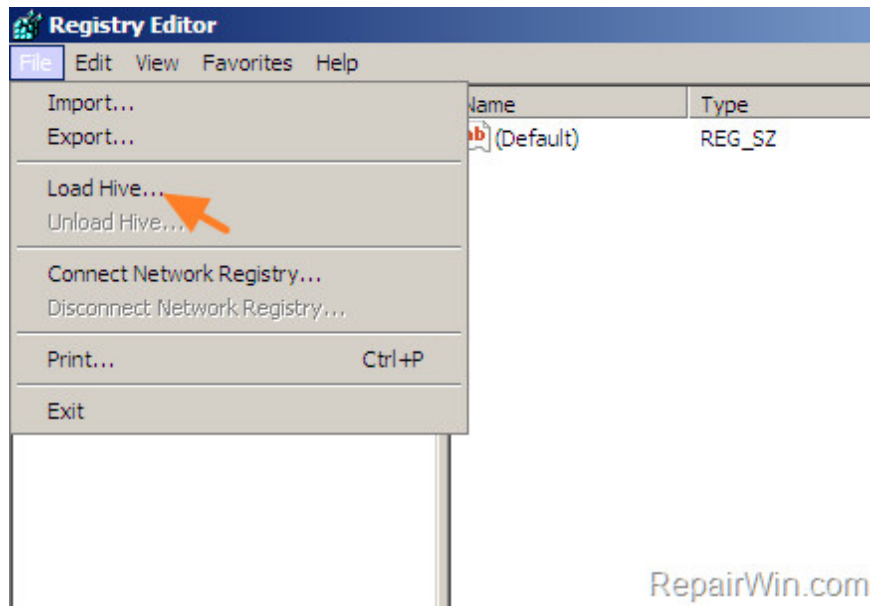
6. On the Command Prompt window, enter **regedit** there and press Enter to open the Registry Editor.



7. In the Registry Editor window, find the key named **HKEY_LOCAL_MACHINE**.

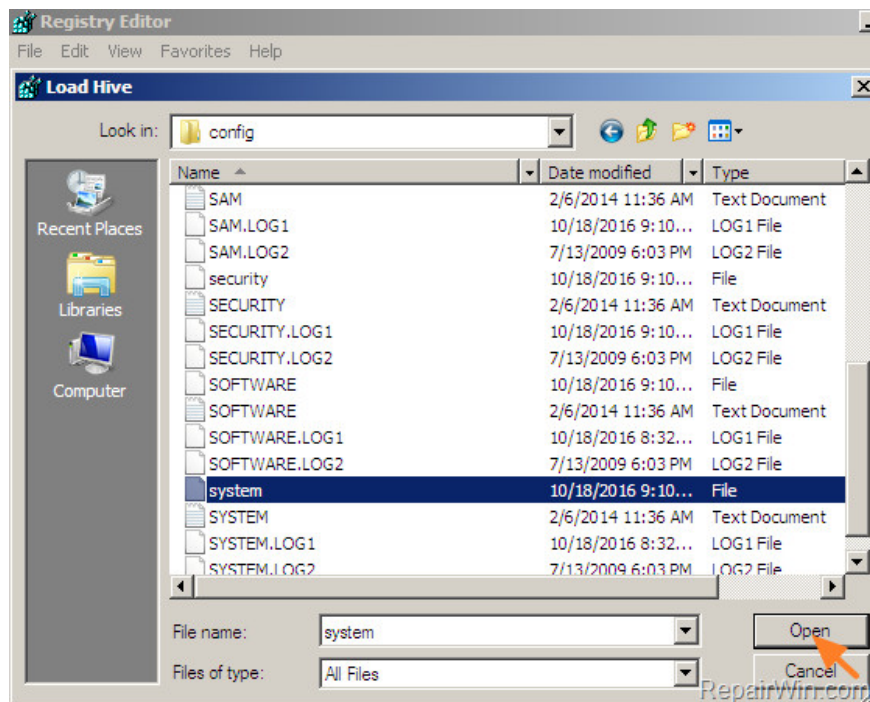


8. From the **File** Menu, select **Load Hive** .



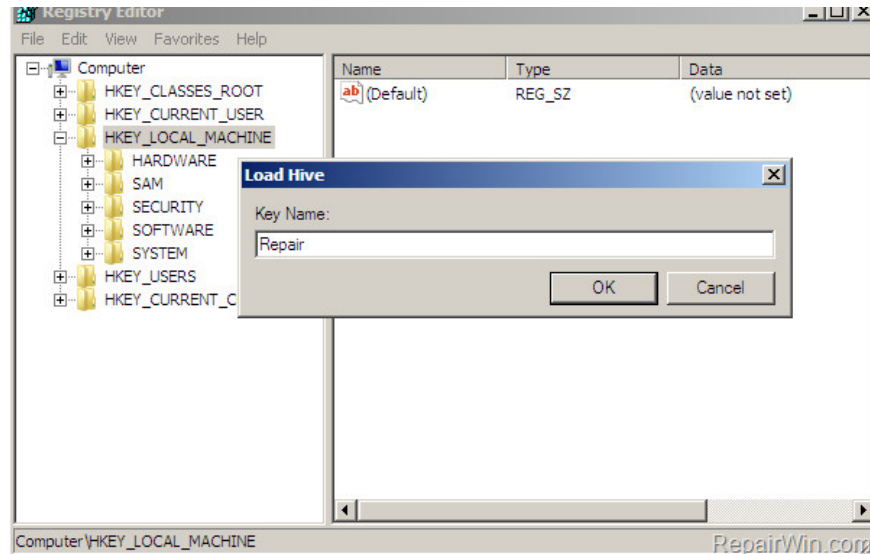
9. On the Load Hive window, find and open the file system according to the path:

% System_Drive% WindowsSystem32config



Note :% System_Drive% is the drive on which you install the Windows operating system (such as C; WindowsSystem32config).

10. Enter a new key in the Key Name box and click **OK** .

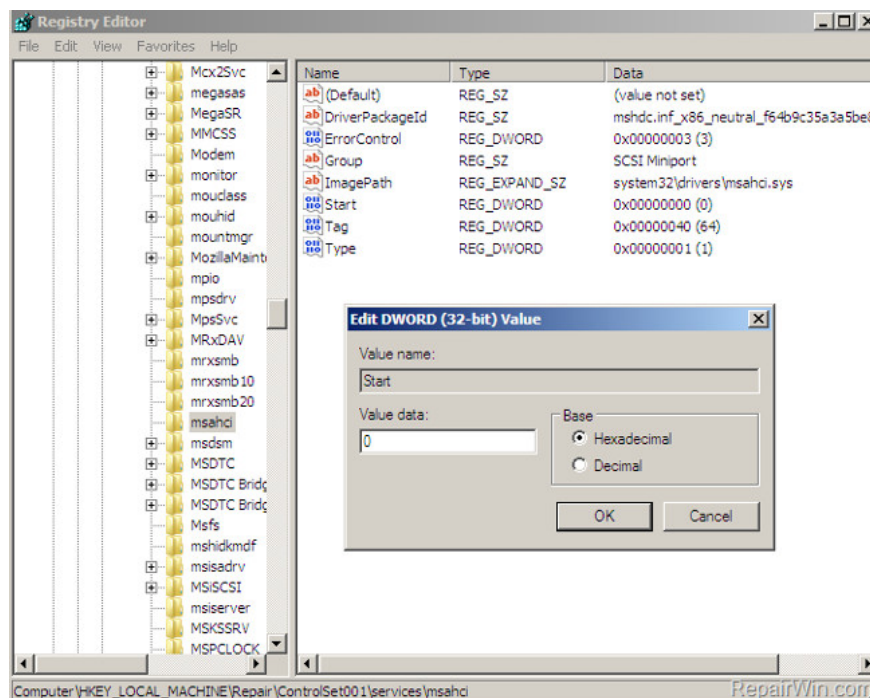


11. Next navigate to the key (in the left pane):

HKEY_LOCAL_MACHINE\ControlSet001\services\msahci

Examples are: HKEY_LOCAL_MACHINE\Repair\ControlSet001\services\msahci

12. Next in the right pane, double click on the **Start value** , then enter **0** in the Value Data box.



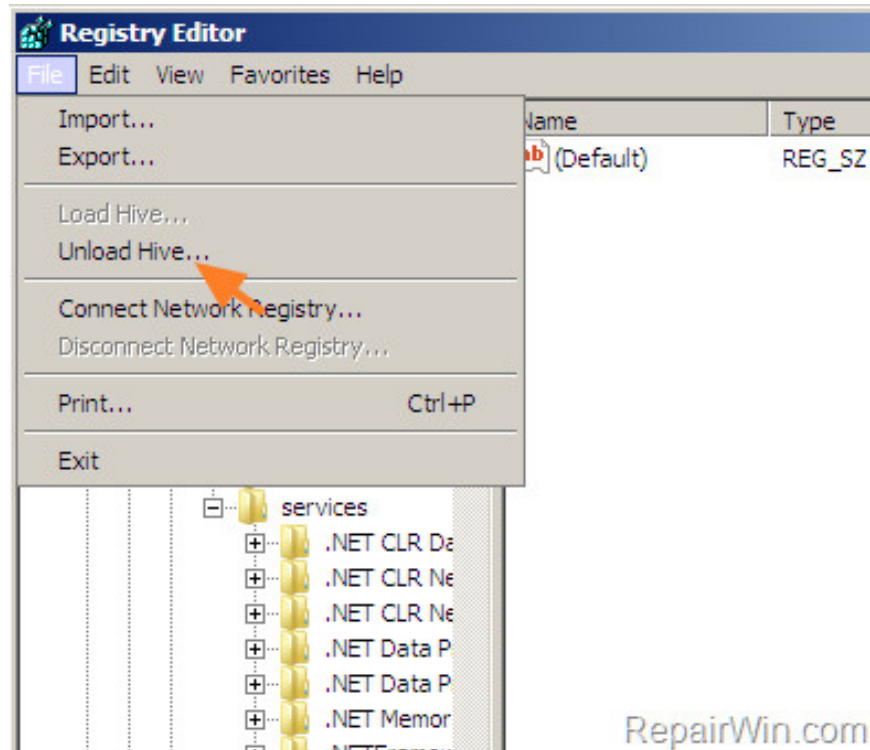
13. Perform the same steps and set the Start value to 0 for the 2 keys below:

1. HKEY_LOCAL_MACHINE\ControlSet001\services\pciide

2. HKEY_LOCAL_MACHINE\ControlSet001\services\asiaStorV

14. After completing the change, select **new key** > in HKEY_LOCAL_MACHINE (assuming HKEY_LOCAL_MACHINE\Repair).

15. From the **File** Menu, select **Upload Hive**.



16. **Close the** Registry Editor **window** and **restart** your computer.

Note :

Ensure that SATA MODE is set to AHCI on BIOS SETUP.

17. Restart your Windows computer in normal mode.

4. Restore your computer to the previous version

1. Create a **Windows installation media USB** drive according to the version of Windows you use.

2. Start your computer from the Windows installation media USB drive.

3. On the **Language options** window, click Next.

4. Select **Repair your computer** .

5. Restore your computer to the previous version:

- On Windows 7 or Windows Vista:

1. Select **Next** .
2. Select **System Restore** .
3. Follow the on-screen instructions to restore your computer to the previous version.

- On Windows 10 / 8.1 / 8:

1. Select **Troubleshoot => Advanced Options => System Restore** .
2. Follow the on-screen instructions to restore your computer to the previous version.

5. Perform new Windows installation

The final solution to fix the problem is to use the USB Windows installation media drive you created and perform a clean install of Windows.

Refer to some of the following articles:

1. 3 simple ways to reset BIOS settings
1. This is why you should turn off or use the Webcam tape immediately
1. Instructions for setting up BIOS and UEFI passwords to protect data on your Windows 10 computer safely

Good luck!

You finished reading the article "**Instructions for quick fix of 'Inaccessible Boot Device' error on Windows 10/8/7 and Windows Vista**" edited by the [TipsMake](#) team. We hope this article has provided you with many useful tech tips and tricks. You can search for similar articles on tips and guides. Thank you for reading and for following us regularly.