

Instructions for organizing photos in Flickr

In this tutorial we will show you how to organize Flickr digital photos and videos, how to use Organizr to allow you to bundle image files for easy editing in bulk.

In this tutorial we will show you how to organize Flickr digital photos and videos, how to use Organizr to allow you to bundle image files for easy editing in bulk.

There are indeed more issues to be made between creating a stream of photos (photostream) than uploading a large stack. When you have a large stack of photos, it is possible that your photos will be messy, or not well organized between related and unrelated photos.

Flickr lets you use image stacks and organize them for easier access. You can create multiple photo collections and organize your photos by including them in episodes. If you are a Pro user, you can also create your own photo collections - that is, the collections that are contained within the image files - besides, you can also map your photos. mine.

In this tutorial we will show you how to organize your photos, then how to share your photos with your viewers.

Introducing the Organizr

A powerful help tool for Flickr in organizing photos with the Organizr name.

Organizr allows you to create photo albums and add photos to these episodes; If you are a professional user, you can also create collections of photo collections with the Organizr tool.

Let's take a look at the Organizr. You can access it easily from any Flickr site by clicking the Organize link that appears on all Flickr pages. For example, go to your home page at Flickr.com, as shown in Figure 1.

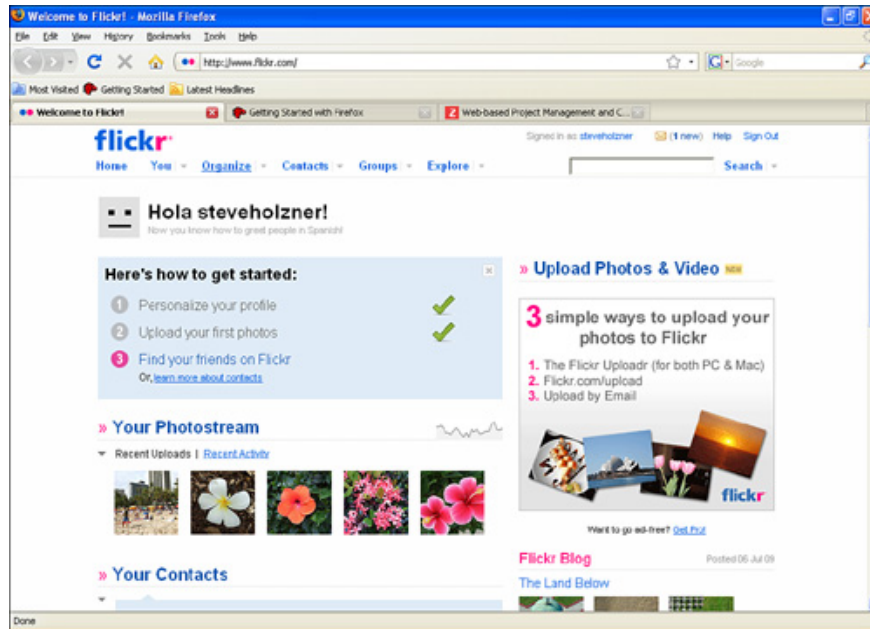


Figure 1: Your Flickr homepage

Note that the Organize link in the link bar is below the Flickr logo in the upper right corner of the page. You will find the link in each Flickr page and click that link to access the Organizer (see Figure 2).

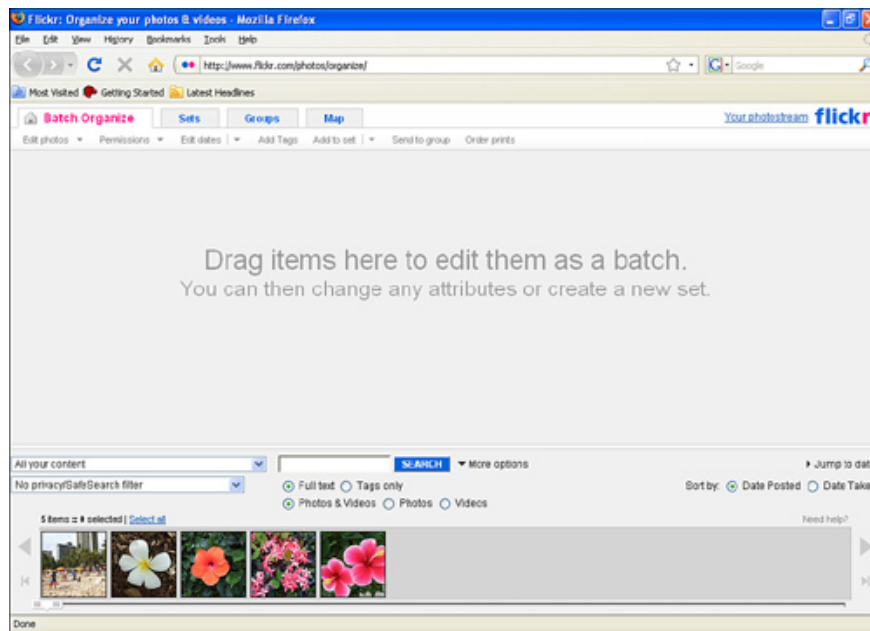


Figure 2: Organizer.

Tip : If you have a Pro account, Organizer will look different. For example, the Sets tab will be the Sets & Collections tab.

Notice the top tabs of Organizr:

1. **Batch Organize:** Allows you to group photos to work with a large number. Drag and drop photos here to group them together.
2. **Sets (Sets & Collections for Pro accounts):** Enables you and manages image files (and collections if you are a Pro user).
3. **Groups:** Allows you to manage the groups you are sharing your photos with.
4. **Map:** Allows you to organize photos by geography.

The middle part of the Organizr is the workspace, you can drag and drop photos here to create a bunch of photos that can be edited in large numbers.

One of the first things you see in the Organizr is a list of photos in the ribbon below. It is **Findr** , a feature that allows you to select the photos you want to work in Organizr.

To select the photos in Findr, you have the following options:

1. To select an image, simply click on it.
2. To select some photos, hold down the **Ctrl** key (**Command** key for Mac users) and left-click on the photos.
3. To select a range of images, click on the starting point in the range, hold down **Shift** , and then click on the end of the image range.

Let's start by creating a bunch of photos that can work with a group of photos simultaneously.

Create bundles

Suppose that you want to create a set of photos of red flowers during the holiday season. The first step you need to take is to create a bunch of photos that you want to group them together. A bunch here is just a group of photos in Batch Organize's workspace (the middle part of the Organizr).

To create a bunch, you can drag photos, one by one or in groups, from Findr into the Organizr workspace. There are many ways to search for photos using Findr, so let's take a look at an overview.

Search for photos in Findr

To see all of the Findr search options, click on the **More Options** link above Findr, which will display all the options in Figure 2.

The first drop-down list allows you to specify what options you want to see in Findr. These are the options:

1. All Your Content - All content
2. Your Non-Tagged Content - The content is not tagged
3. Your Content Not in a Set - Content is not in the file
4. Your Geotagged Content - Content is tagged according to geographical location
5. Your Non-Geotagged Content - Content is not tagged according to geographical location
6. Content Uploaded On - Content updated on
 1. July 6, 2009 (for example)
 2. July 3, 2009 (for example)

Under this drop-down list, you can specify privacy settings for photos that Findr will display. These are the settings:

1. No Privacy / SafeSearch Filter - Unsecured Privacy / SafeSearch
2. Only Show Public Content - Displays only Public content
3. Only Show Content Visible to Friends - Only show content with friends
4. Only Show Content Visible to Family - Only show content with family
5. Only Show Content Visible to Friends & Family - Only show content with friends and family
6. Only Show Private Content - Only show private content
7. Only Show Safe Content - Only show safe content
8. Only Show Moderate Content - Shows only level content
9. Only Show Restricted Content - Only display content is limited

Besides the two list boxes is a search box, this search box makes it easier to find between a lot of photos with a tag or certain keywords in the description of each photo. That means that you can easily gather all the photos of Uncle An (name taken for example) into the same bundle.

Below the search box are two radio buttons you use to specify what to look for:: **Full Text** (with tags included) or **Tags Only** (tags only).

To the left of the two radio buttons are the date controls. You can find photos by specific dates by clicking the **Jump to Date link** , or the date you updated the photos or the dates they were taken with the **Date Posted** and **Date Taken** radio buttons.

Finally in Findr, you can specify that you want to search for photos or videos with **Photos & Videos** , **Photos** and **Videos** radio buttons.

After creating the desired search options, matching images or videos will appear in Findr. The next step is to drag them into the Organizr workspace.

Drag the collections into the Organizr

Now that the photos you want appear in Findr, select them and drag them - either one by one or the whole group - into the workspace of the Organizr (**Batch Organize** tab).

Figure 3 shows the results; The photos you selected appear in the Organizr.

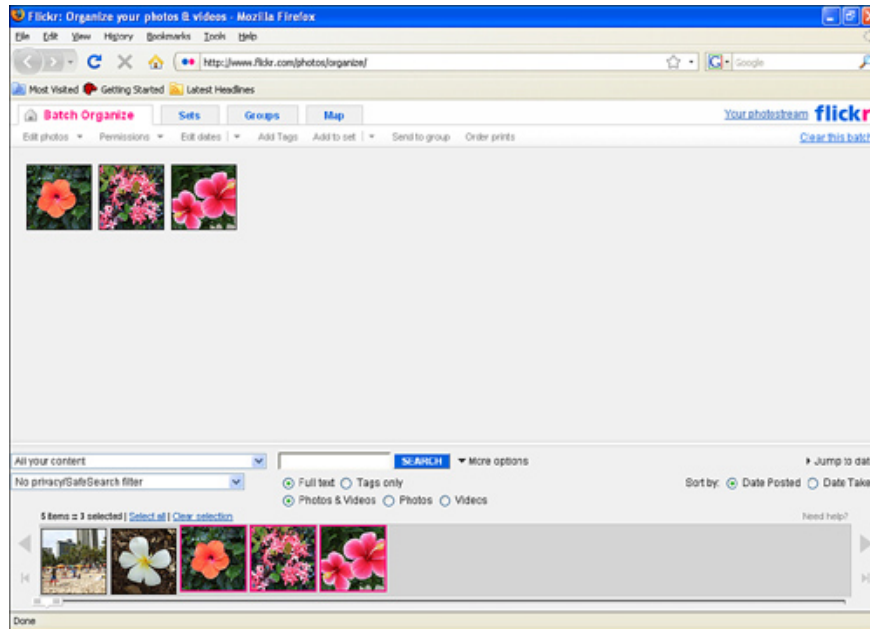


Figure 3: Create a bunch

Now you have created a bunch of photos and can work with them simultaneously. So what can you do with this photo bundle? The answer here is that you can edit (including the title, tag and description for photos), set permissions, add tags, .

Actions you can perform are reflected in the links above the Batch Organize tab:

1. Edit Photos

- Titles, Tags, and Descriptions
- Rotate
- Delete

1. Permissions

- Who Can See, Comment, Tag?
- Change Licensing
- Set Safety Filter
- Set Content Type
- Hide / Show in Public Searches

1. Edit Dates

2. Add Tags

1. Add to Set

New Set
Existing Set

1. Send to Group
2. Location
3. Order Prints

For example, suppose that you want to add a tag or tags to all photos in the bundle. You can do this by clicking the **Add Tags** link, which opens a dialog box as shown in Figure 4.

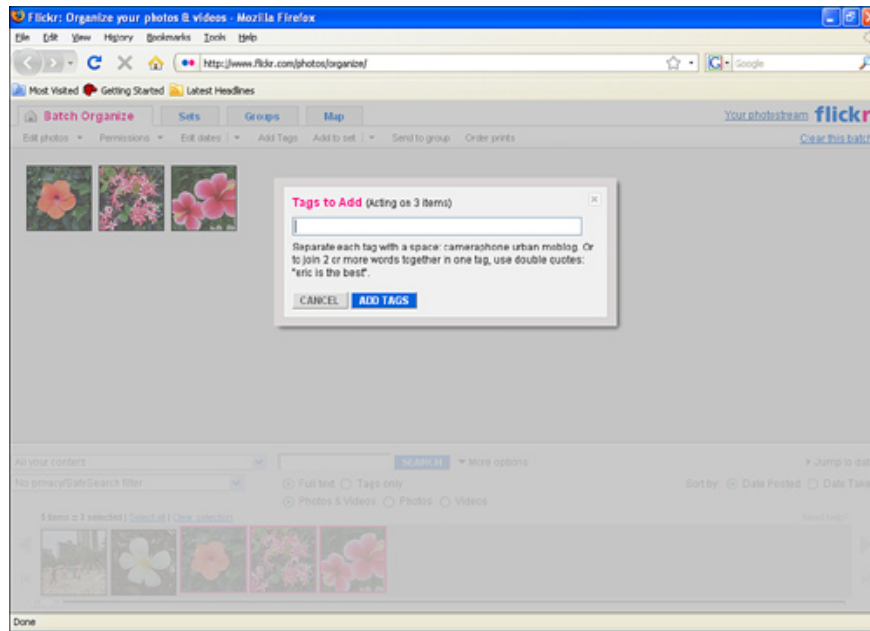


Figure 4: Adding tags

To add a tag to all the photos in the bundle, simply enter the new tags (enter multiple tags separated by a space, and surround the tags with quotes) and click **Add Tags** button.

Next, let's look at how to create an image file.

Create photo file

Suppose you want to group some of the photos into one Flickr set (for example, a set of red flower photos).

To get started, click the **Sets** tab in **Organizr** to open the tab shown in Figure 5.

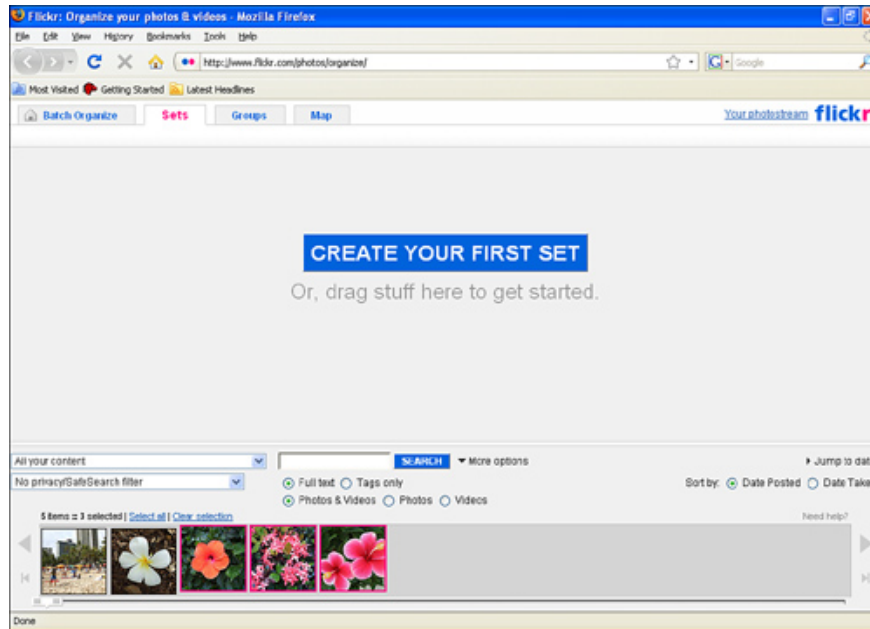


Figure 5: Sets tab

That will create a new set in a new tab, as you can see in Figure 6.

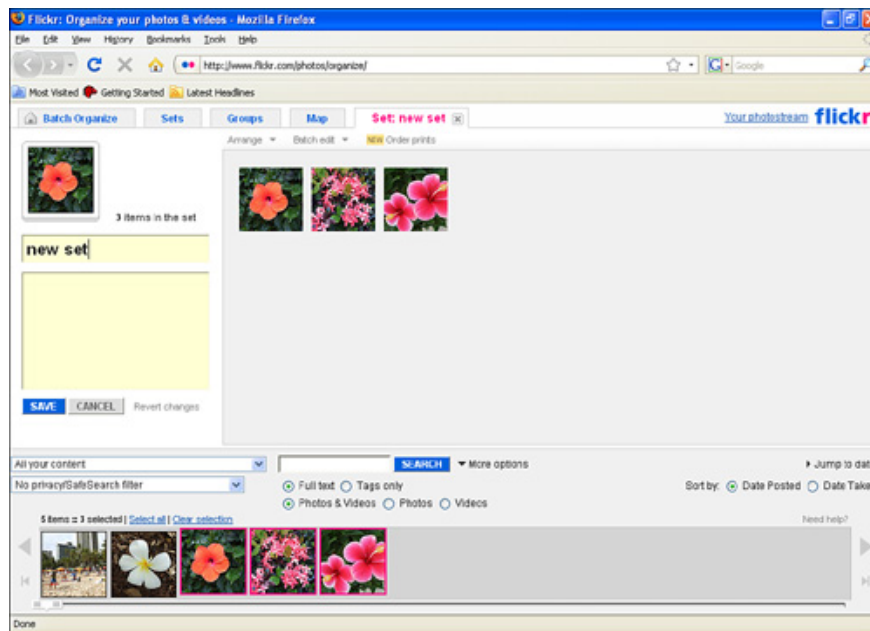


Figure 6: A new episode

You can see the file options above the tab page:

1. Arrange (Sort)

Arrange by Date Taken (Oldest First) - By shooting date (Oldest to newest)
Arrange by Date Taken (Newest First) - By shooting date (Latest to oldest)
Arrange by Date Uploaded (Oldest First) - Follow this update (Oldest)
Arrange by Date Uploaded (Newest First) - By update date (Latest)
Alphabetically - Alphabetically
Randomly - Random
Reverse Current Order - Contrary to the current order

1. **Batch Edit** (Edit)

Titles, Tags, and Descriptions - Titles, tags and descriptions
Change Permissions - Change the permissions
Change Licensing - Change registration
Set Safety Filter - Set up safety filter
Set Content Type Hide / Show in Public Searches - Set the content type to hide / show in general searches
Add Tags - Add tags
Change Dates to Same Day - Change to the same day
Time Shift Dates - Changes
Rotate - Dial
Send to Group - Send to a group
Change Geoprivacy - Geographic change
Add Items to the Map - Add items to the map
Remove Items from the Map - Remove items from the map
Delete This Set - Delete this episode

1. **New Order Prints**

The two text boxes on the left hold the title and description of the episode. You can add your own name and description as shown in Figure 7.

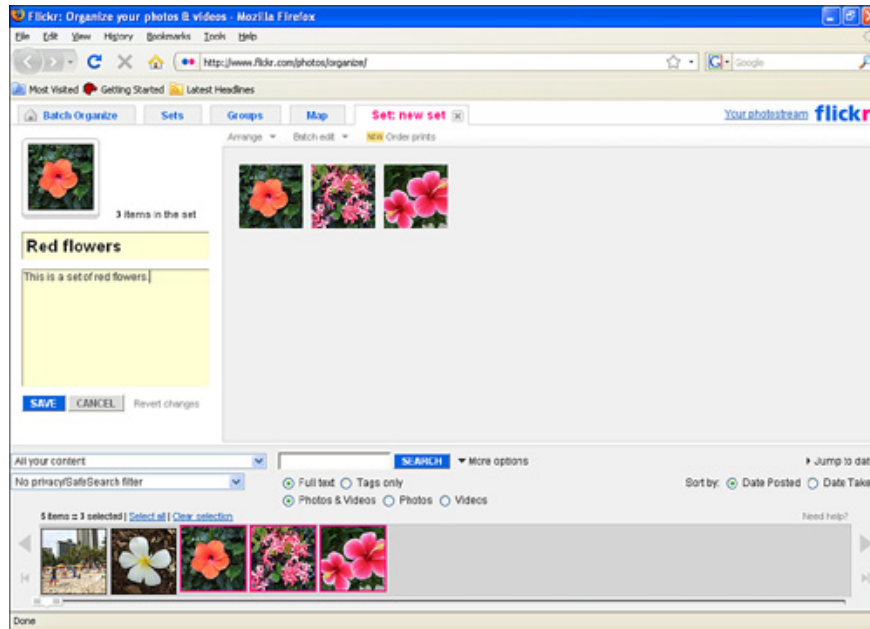


Figure 7: Set the title and description for the episode

To save a file, click the **Save** button. Then the set will close and it is represented by one of the images in the episode (see Figure 8).

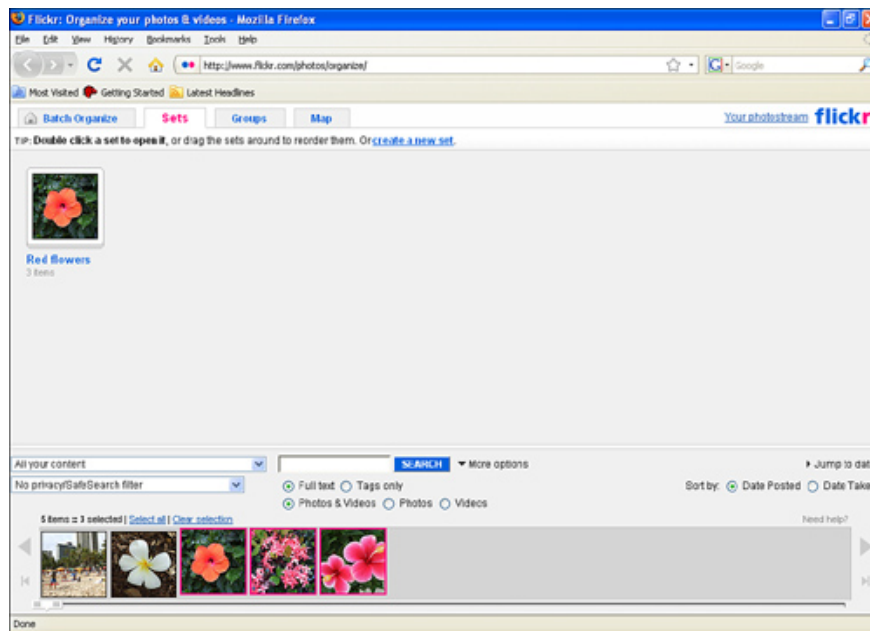


Figure 8: The volume has been closed

The new episode will appear in your photostream, as you can see in Figure 9.

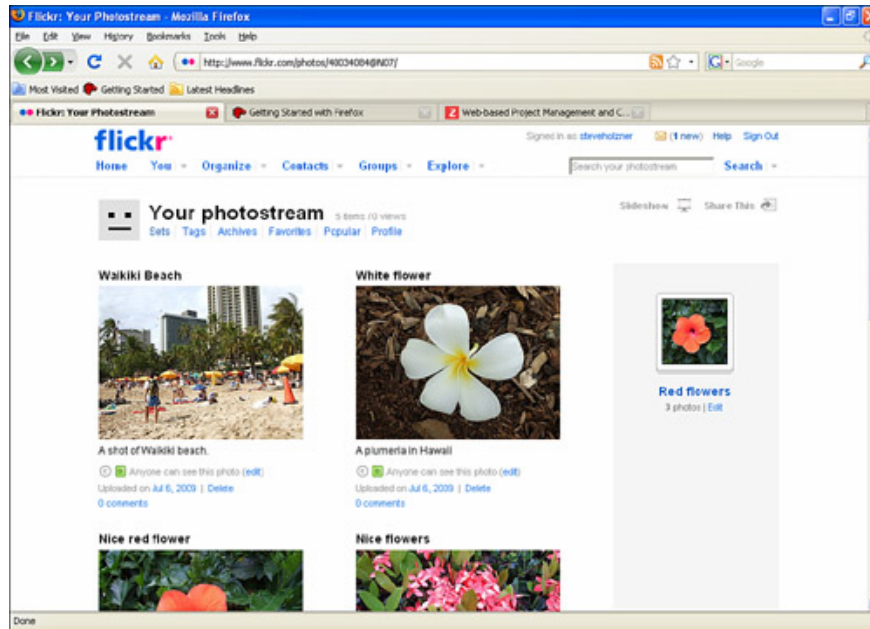


Figure 9: A new set in the photostream

To open a file from your photostream, double click on it. The episode will then open as shown in Figure 10.

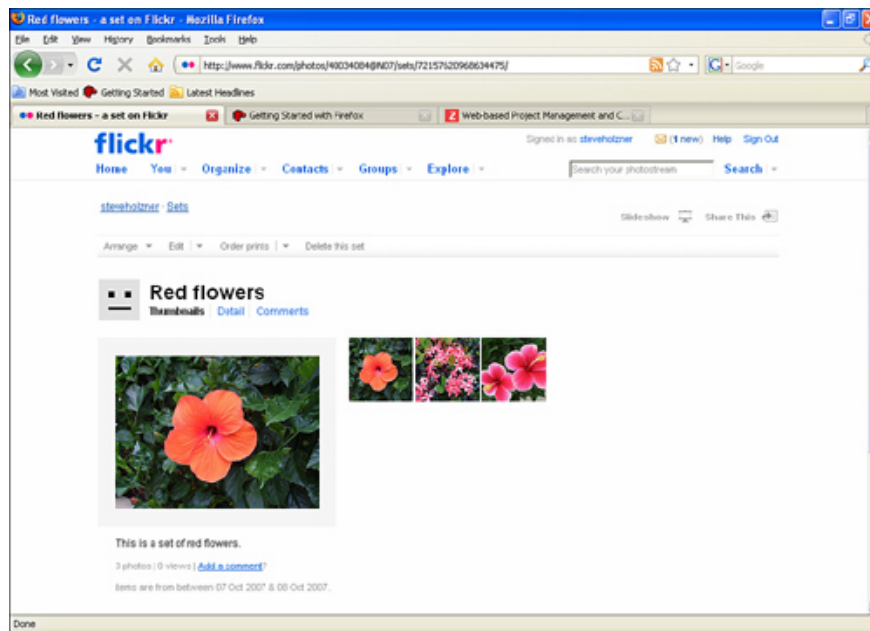


Figure 10: Open an image file

Edit an image file

Editing an image file is easy with the Organizer. You simply click the **Organize** link in any Flickr page, click the **Sets** tab, and double-click the file you want to edit, as shown in Figure 11.

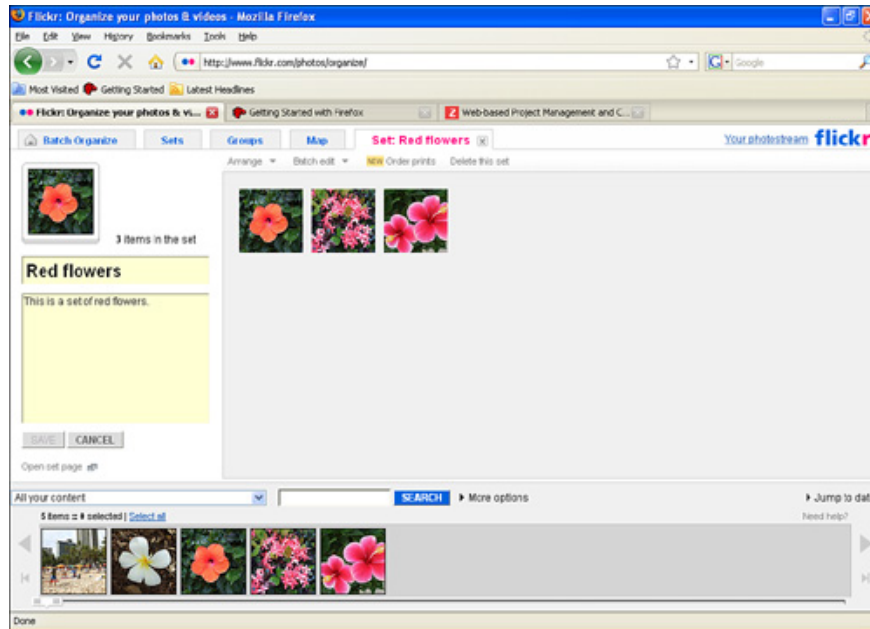


Figure 11: Editing image file

To add a new image to the set, drag the new photo from the Findr bar to the image file.

To remove an image from the image file, drag it to the Findr bar and release it. This does not delete the original image, it just deletes the image in the image file.

You can use the menus in Organizr to edit the image file. **Arrange** menu allows you to arrange photos by date or name, . **Batch Edit** menu allows you to edit all titles, descriptions and tags simultaneously photos in the episode.

If you want to create a new set, click the **Set** tab, then click the **Create a New Set link** .

You can even specify which files you want the photos or videos to be added when you upload them using Uploadr.

For example, look at Figure 12. This image is showing Uploadr is preparing to upload an image for us. Note at the bottom right, it has a small **Add to Sets** title, and below, our set of red flower photos is listed - Uploadr knows all about this episode.

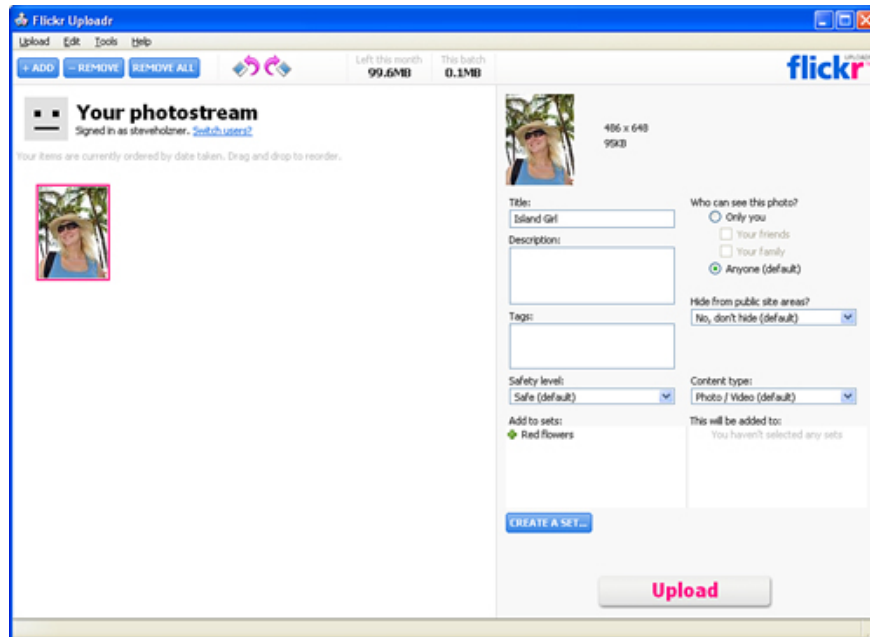


Figure 12: Specify a file using Uploadr.

To add the photos or videos you are uploading to a file, select the file in Uploadr before uploading them.

Set up an avatar for the episode

All episodes are represented by one of the photos in the episode. As you can see in Figure 11, one of the red flower photos will represent the entire episode when the episode is closed.

If you want to replace the image that Flickr chooses by default for that set, click on the Sets tab, then double-click on the file you want to work on to open it. You will then see all the photos in the set lined up, available so you can work with them.

The image that Flickr uses to show the episode is larger than the other images, and is on the far left. To use another image to replace this default image, drag that image over the image Flickr uses to represent the file, as shown in Figure 13.

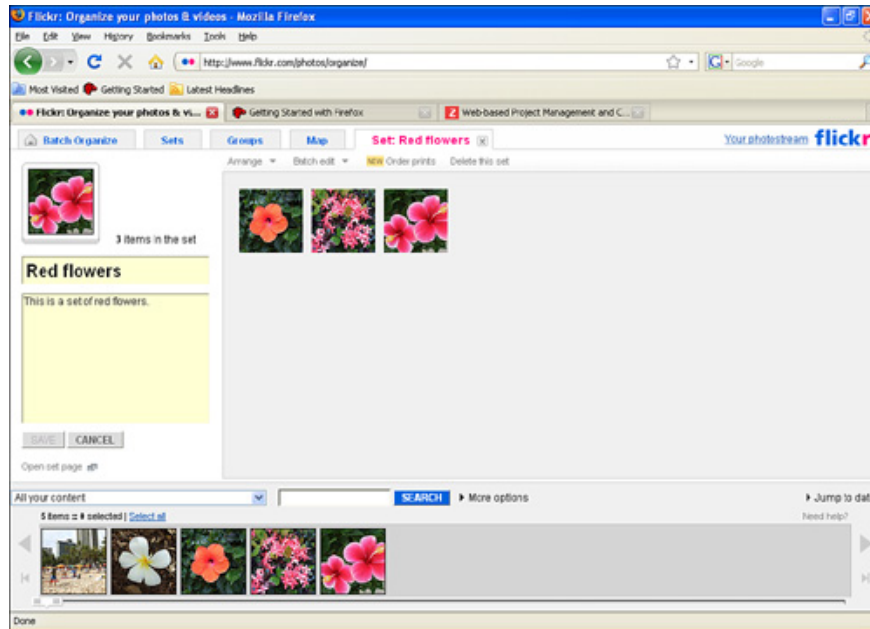


Figure 13: Changing the image present for the volume

When you are satisfied with the image that will appear for the volume, click the **Save** button. Flickr will close the file and the photo book will be displayed with a new photo that you just selected.

Who can see the photos in one episode?

Photos in the photo book work just like Flickr's photos - each has its own set of permissions, and those who can see those photos are the ones you are entitled to. For example, people can view public photos in the episode. However, if you have marked some private photos, not for friends or family, only you can see them. The photos you have marked for friends and family can only be viewed by this group.

***Tip** : Keep in mind that if you share a photo book with a group, the group's terms settings will replace your own settings for these photos.*

The episodes are useful in allowing you to create multiple small albums in Flickr. You can organize your photos into episodes that show your trip somewhere, an exhibition, .

Organizing your photos into episodes is a good idea because then your visitors to the photostream will not have to search through all the pictures to find the pictures they need to find.

However, note that if you are a long-time user with Flickr, using such files will not be enough. You may want to have an additional level of photo organization - some can display multiple episodes, allowing others to choose which episode they want to see. Does such a level exist?

Of course there is such a level! You can create Flickr collections.

Below we will show you how to create collections.

Create collections

What is the difference between a photo book and a collection? You can understand that a photo book has only a number of photos and videos, but a collection can contain multiple photos.

This is a good way to work when you have a hierarchical architecture for photos. For example, you went to an exhibition and wanted to list photos of each day in a separate episode. In that case, you can create a collection containing photos by date.

However, in order for you to create a collection, it is necessary for you to have Flickr's Pro account.

Creating a collection is not difficult, just follow the steps below:

1. Click the **Organize** link in any Flickr page to open the Organizer.
1. Click the **Sets & Collections** tab. In that tab, you will see a link to create a new collection.
1. Click on the link to create a new collection and set the title and description for your new collection. You will see the files available on the same page. Drag into the episodes you want to add to the collection.
1. After adding the files, click the **Create Mosaic** button. The set of photos will be displayed with an image representing each episode, but the collections will be presented with an interface of images from the collection.

When you click the **Create Mosaic** button, Flickr will randomly select photos from your gallery to add to the display.

Flickr will select images that it adds to the display randomly with priority for public images. (In fact, if there is only one public image in your collection, Flickr will use that image and only use that image for the display.) You can override what images appear in the display by dragging your photos here.

***Tip** : Private photos in a certain collection will not be visible to people who do not have permission to view them, but the private photos used in the display part of the collection are available.*

If you are a Pro user, you can create multiple collections if you want. You can even create collections contained within it that are other collections - however there is a limitation on this issue. You can only add a 5-level deep collection.

Add photos to the map

There are a number of other things you can do to organize your photos on Flickr: You can geotag them by locating them on Flickr's global map.

You can drag and drop your photos on a map, this map will save their location. Then when the user views your photos in a photostream, a small map link will appear according to the photos that have been tagged according to that geographic location. Clicking on that link will open a map showing where the photo was taken (and the map also shows the location of other Flickr photos that have been tagged by location).

This is a great feature for travel talks, vacations or exhibitions, which allows people to see exactly where a certain photo was taken, such as a trip to the South. Your pole.

To start, open the **Organizr** (click the Organize link in any Flickr page), then click the **Map** tab in the **Organizr**

The first time you open the **Map** tab, Flickr displays a warning dialog, asking you to specify who can see the location of the photos, as shown in Figure 14.

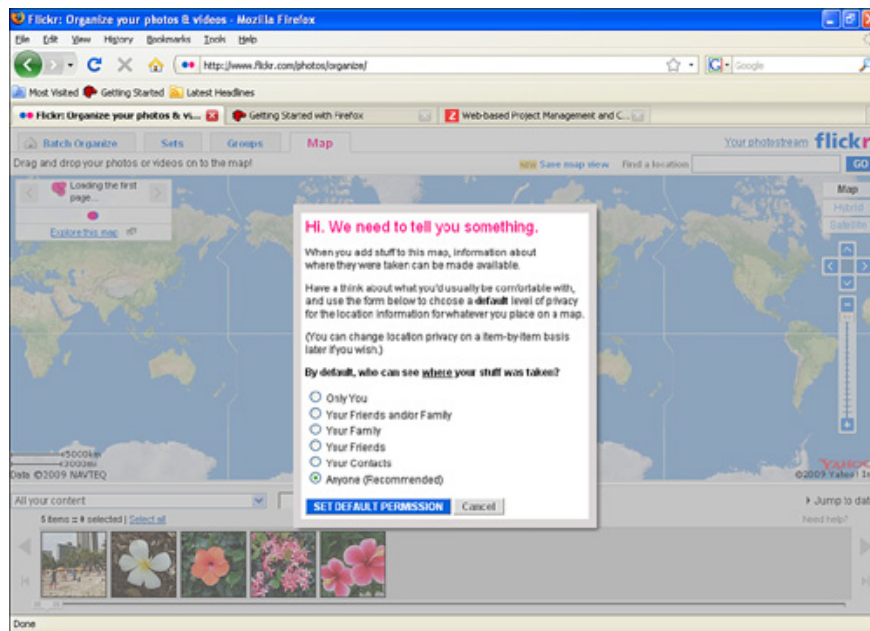


Figure 14: Flickr warning for maps

If you don't want many people to know this information about the photo, you can limit who can view the geotag of the photos. These are options for restricting that information, given in the dialog box:

1. Only You
2. Your Friends and / or Family
3. Your Family
4. Your Friends
5. Your Contacts
6. Anyone (Recommended)

Please make your choice in this dialog box (**Anyone** is selected by default) and click the **Set Default Permission** button . A confirmation dialog will appear, click **OK** to disappear that dialog box.

Now the map itself will appear in Organizr, as shown in Figure 15.

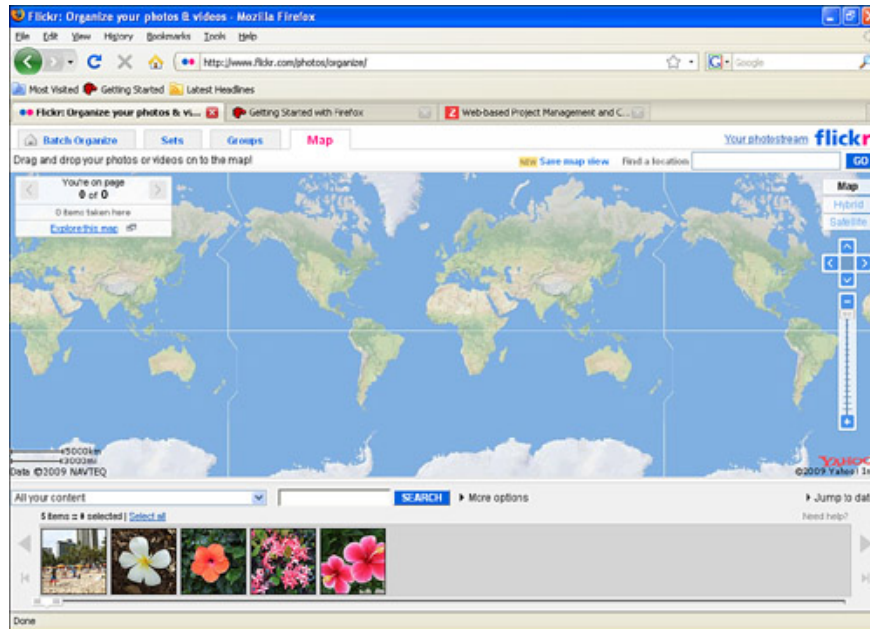


Figure 15: Tab Organizr map

You can use the zoom bar on the right to zoom in on the map you want to see, as shown in Figure 16.

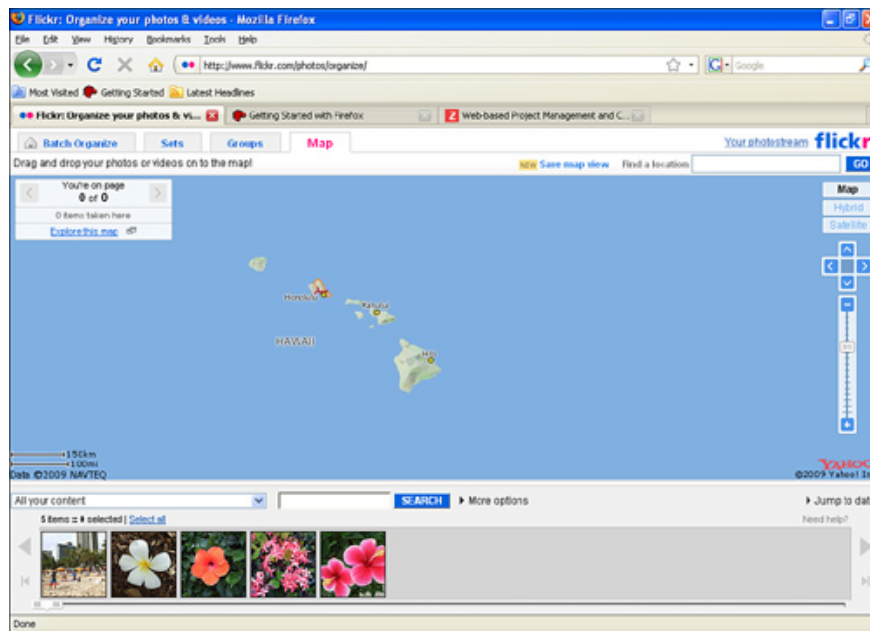


Figure 16: Zooming in on the map

Once you've zoomed in appropriately, you can drag photos from Findr to the map and drop them somewhere you want, as shown in Figure 17.

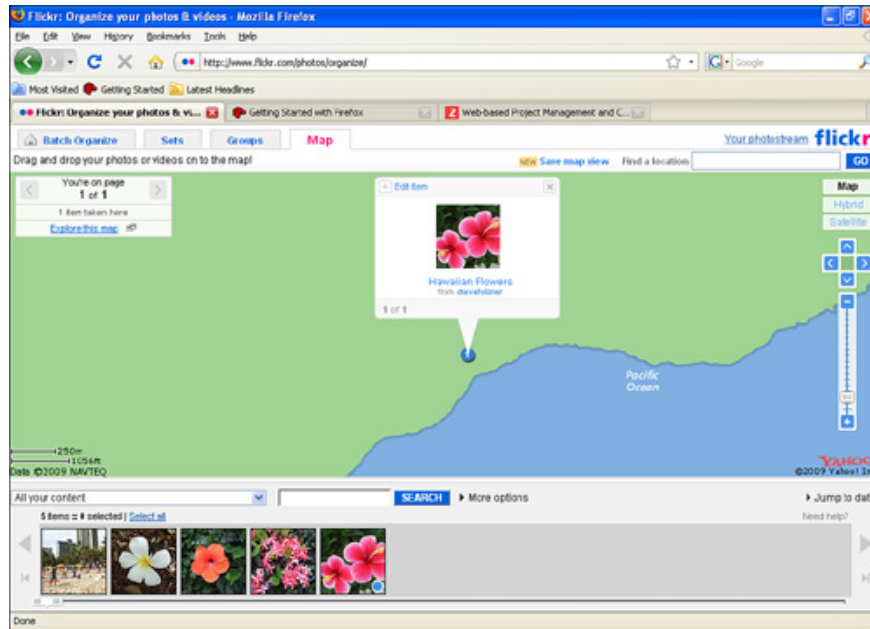


Figure 17: Drop the image into a location on the map.

Note : *If you drop a photo into the map and have not zoomed in to an effective way so Flickr can accurately assess the location of the image, then Flickr will display a dialog box asking you to zoom in further. . You don't have to accept that advice, but if you don't accept it, people won't be able to locate your photo on the map .*

Where is the map information shown? And how can people see it? When you mark the geographic location for a photo, a Map link will appear in the photostream section of the image, as shown in Figure 18.

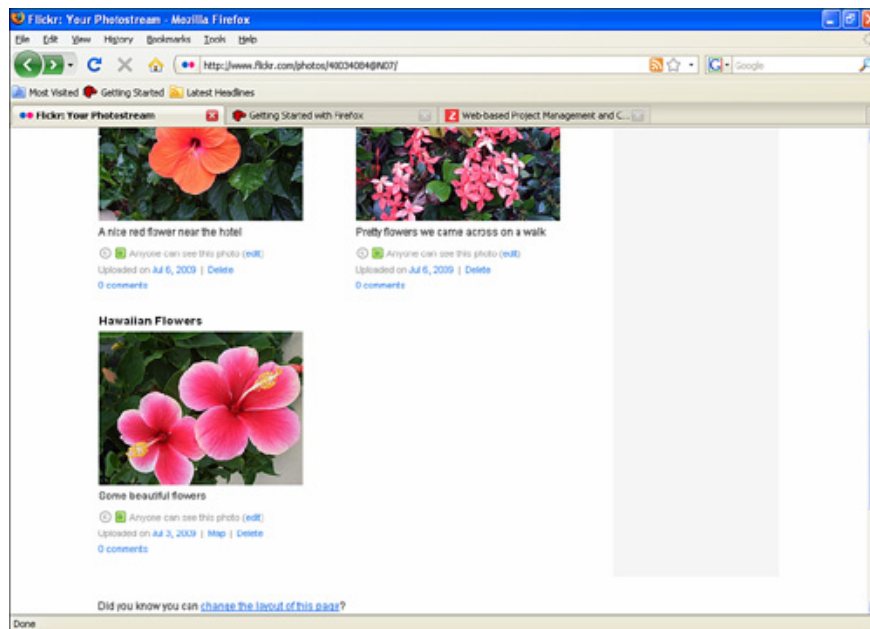


Figure 18: A Map link is added to the photostream entry

When you click on this **Map** link, the global map will be opened and you can see the location of the image on the map - along with the location of other photos from other users who have located near the location. there.

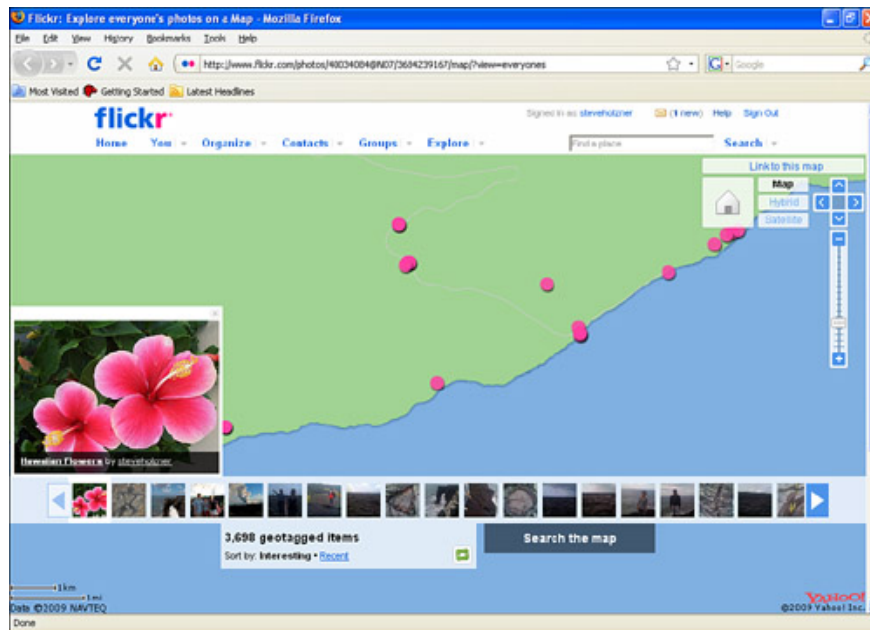


Figure 19: Open the map of the image

Conclude

In this tutorial, we showed you how to organize photos and videos on Flickr. We also introduced the Organizer, a feature that allows you to bundle photos together for easy editing in bulk. You can also use Organizer to group photos into collections or collections for Pro accounts. Finally, you can locate the photos on the interactive map by marking their geographic location.

You finished reading the article "**Instructions for organizing photos in Flickr**" edited by the [TipsMake](#) team. We hope this article has provided you with many useful tech tips and tricks. You can search for similar articles on tips and guides. Thank you for reading and for following us regularly.