

Instructions for installing WTFast to reduce ping when playing online games, when the cable is broken

Although the Internet connection is stable, during the process of playing online games, players cannot avoid lag or high ping. To remedy this situation when playing online games, you can rely on WTFast support. In the following article, Network Administrator will guide you how to install WTFast to reduce ping when playing online games.

Although the Internet connection is stable, during the process of playing online games, players cannot avoid lag or high ping. To remedy this situation when playing online games, you can rely on WTFast support. In the following article, Network Administrator will guide you how to install WTFast to reduce ping when playing online games.

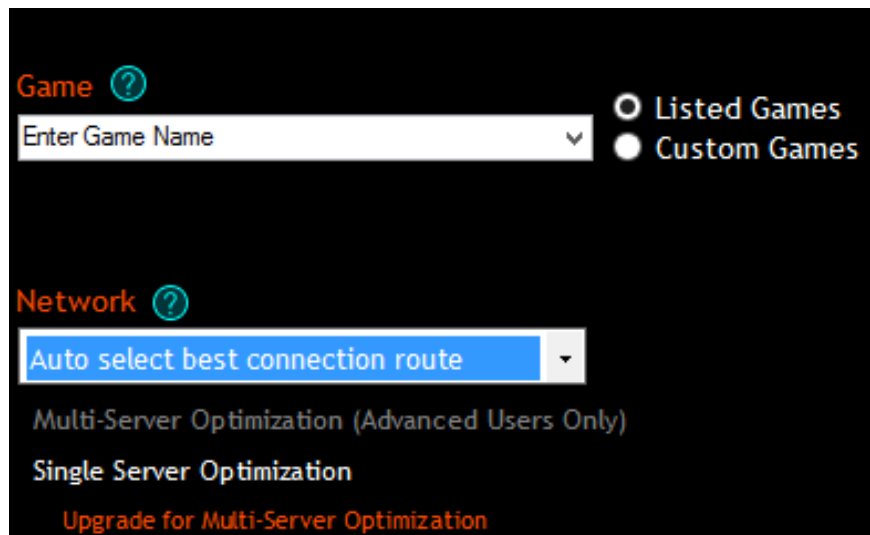
1. You can visit <http://store.steampowered.com/app/315880/> to download WTFast.

Or you can donate WTFast to your device and install it here.

2. Visit <https://www.wtfast.com/Account/Create> to create an account.

3. The next step is to open WTFast and log in to your account.

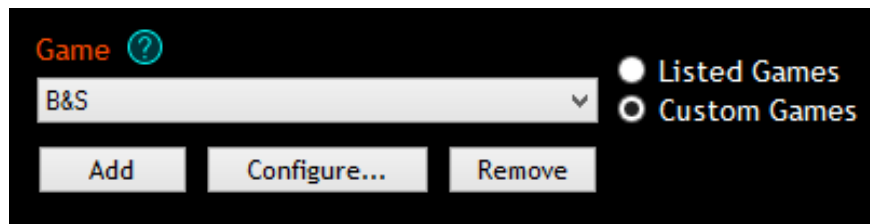
4. On the screen you will see the image below:



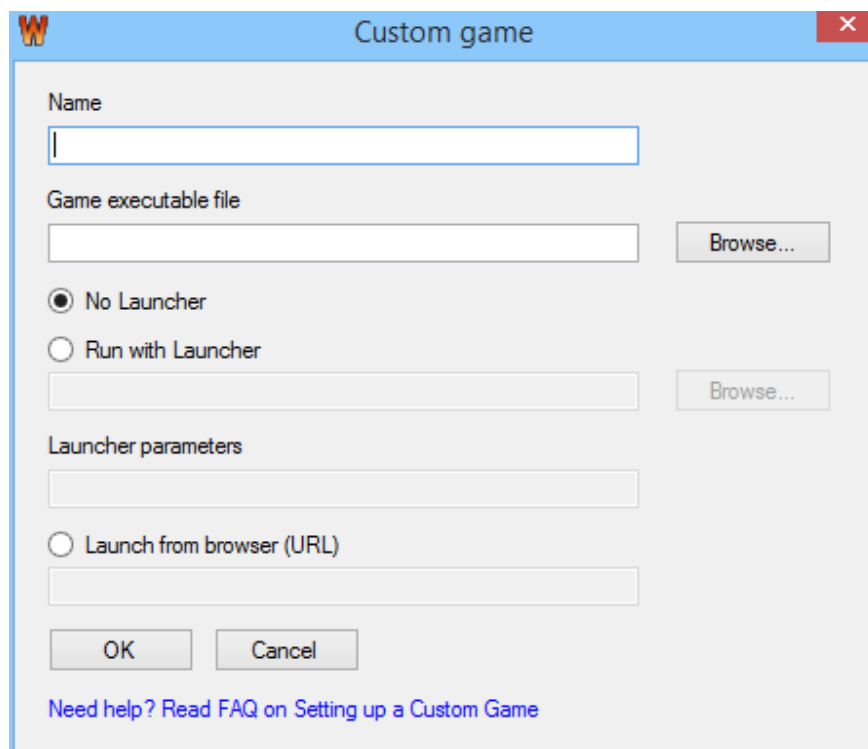
At the Game section, you can search your game in the **Listed Games section** . If you cannot find your game in the game list, you can choose **Custom games**.

In the Network section, you should try all servers until you find the best server that can give you a stable and lower ping when you play the game without WTFast.

5. If your game is not found in Listed game, when you click **Custom games** , on the screen you will see as shown below:



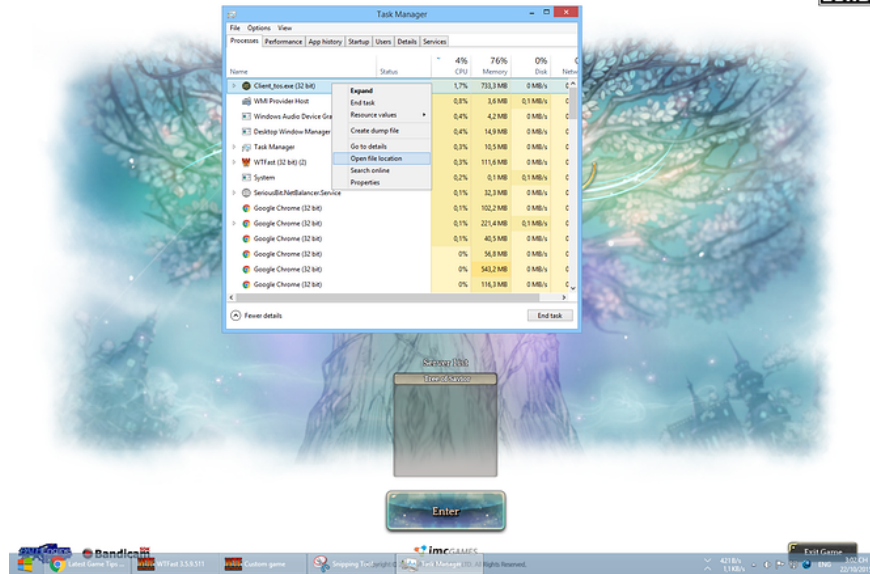
Click **Add** and a new popup window appears on the screen.



You can enter any name, such as ToS, in the Name field.

The **Game executable file** is the file running on Task Manager when you play the game, if you don't know how to find files, follow the steps below:

- Open your game.
- Go back to the Desktop screen, then press **Ctrl + Alt + Del** to open Task Manager.
- Right-click the game you open in Task Manager and select **Open file location**.



In this example with ToS you can see the game location being executed.

- Return to WTFast, return to the previous location and select the files.

6. Select **OK** then click **Play** to start playing the game.

7. If any popup window displays an error, just click OK. When you are playing a game, you can switch to WTFast and check the current connection number. If it is 1, it means everything is OK, if it is 0, then surely there is something wrong here.

Refer to some of the following articles:

1. How to create snake skins in game slither.io
2. How to play Pokemon GO on Windows computers
3. Summary - How to play Pokemon GO, virtual reality game catch Pokemon on smartphone

Good luck!

You finished reading the article "**Instructions for installing WTFast to reduce ping when playing online games, when the cable is broken**" edited by the [TipsMake](#) team. We hope this article has provided you with many useful tech tips and tricks. You can search for similar articles on tips and guides. Thank you for reading and for following us regularly.