

# Instructions for installing Windows Server 2012 step by step

In this Windows Server 2012 tutorial, we will learn about system requirements and how to install Windows Server 2012. Invite you to follow up.

In this Windows Server 2012 tutorial, we will learn about system requirements and how to install Windows Server 2012. Invite you to follow up.

## System requirements for Windows Server 2012:

Although most servers now meet the necessary requirements for Windows Server 2012. But passing through the system requirements is not redundant, especially in case of need to update to a new version of Windows Server from the system. Old server system.

1. CPU socket is at least 1.4 GHz (64bit) or faster for 1 core and Microsoft recommends 3.1 GHz (64bit) or faster for multi-core.
2. Minimum RAM 2GB, 8GB recommended.
3. 160G hard drive capacity, of which 60GB is for the system partition.

If the hardware does not meet the minimum requirements, do not try to install Windows Server 2012. Because the installation process will verify the computer hardware and tell you if it is eligible to install Windows Server 2012.

## Windows Server 2012 installation:

**Step 1:** Get the Windows Server 2012 ISO file from Microsoft:

Go to this link to download the Windows Server 2012 ISO file: <https://www.microsoft.com/en-us/evalcenter/evaluate-windows-server-2012-r2>. Of course, this is only a trial version, 180 days.

Picture 1 of Instructions for installing Windows Server 2012 step by step

The above link starts registering the types, if you lazy you can try this link, the link after you register (64bit version). Because I'm not sure if it will live, so I have to link it to a text, you can copy it.

[http://care.dlservice.microsoft.com/dl/download/6/2/A/62A76ABB-9990-4EFC-A4FE-C7D698DAEB96/9600.17050.WINBLUE\\_REFRESH.140317-1640\\_X64FRE\\_SERVER\\_EVAL\\_EN-US-](http://care.dlservice.microsoft.com/dl/download/6/2/A/62A76ABB-9990-4EFC-A4FE-C7D698DAEB96/9600.17050.WINBLUE_REFRESH.140317-1640_X64FRE_SERVER_EVAL_EN-US-)

IR3\_SSS\_X64FREE\_EN-US\_DV9.ISO

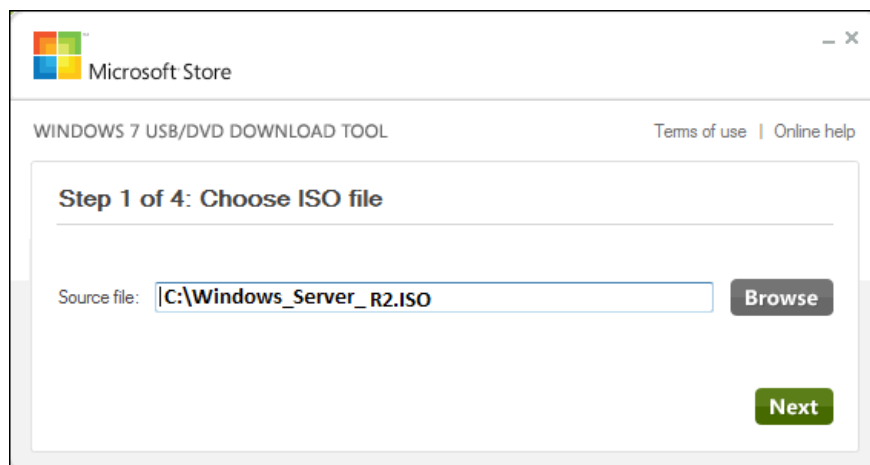
Don't ask me the full link, file crack, key or something like that. This paragraph, I can only say that you are suffering from Google, there are many, however, used for servers, work and especially those that require safety, high security should buy the official version from Microsoft. You can use lucky therapy to find the key and then fill it out.

Look like you've finished downloading the Windows Server 2012 ISO file. 4.2GB size only.

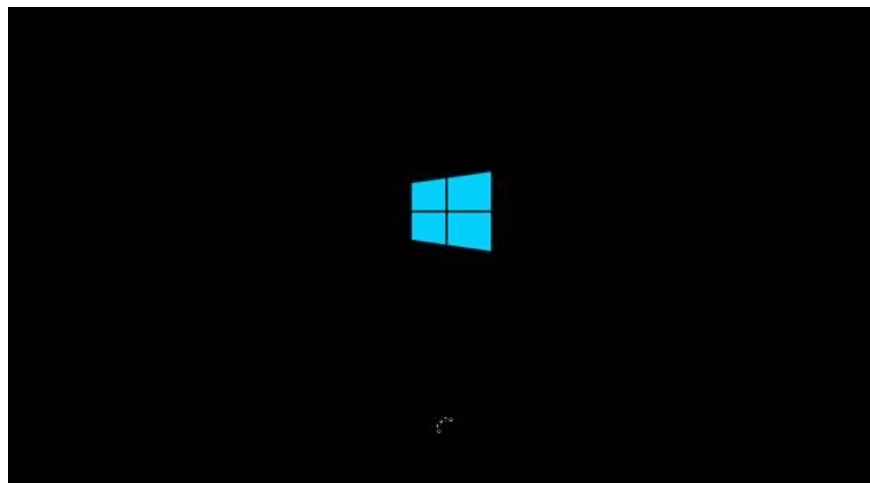
**Step 2:** Use Windows 7 USB Download Tool to create USB boot.

Link download Windows 7 USB Download Tool, USB creation tool installed Win from ISO file issued by Microsoft itself.

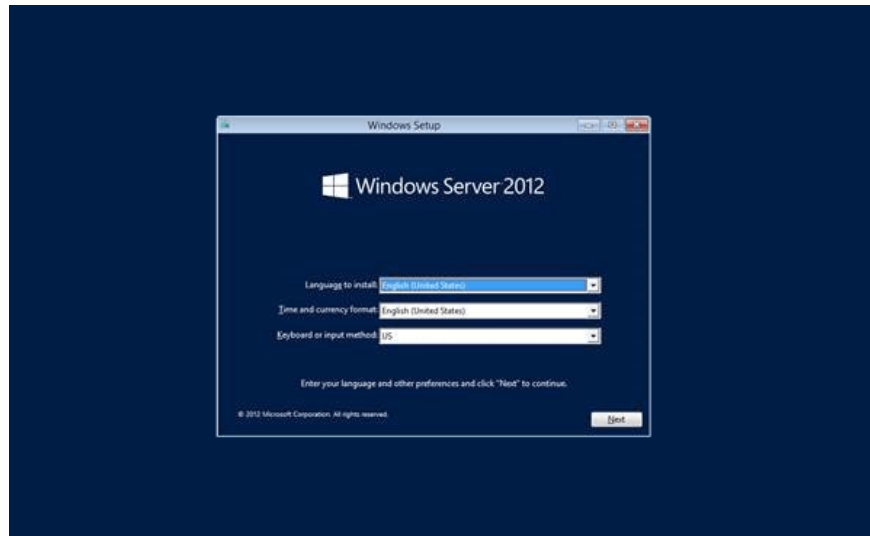
After downloading the tool, double-click the .exe file to open the tool, select the location of the downloaded ISO file, click **Next** and wait for this tool to create a bootable USB for you.



**Step 3:** After completing the above steps, you plug the USB into the device to install and wait for it to load all the files. You will have to wait a while until the screen below appears.



**Step 4:** After the files are loaded, you will see a screen to select the installation language, keyboard, time. If you use English, just leave the default and click **Next** .



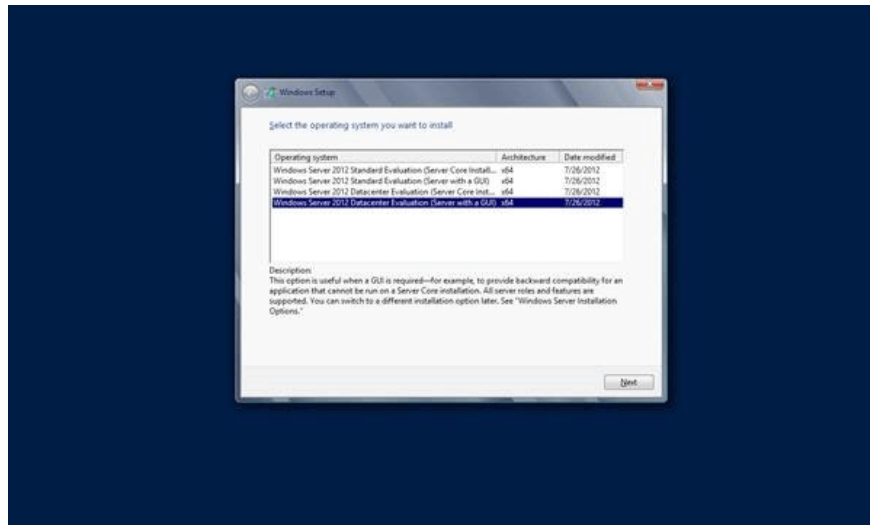
**Step 5:** Click **Install Now** .



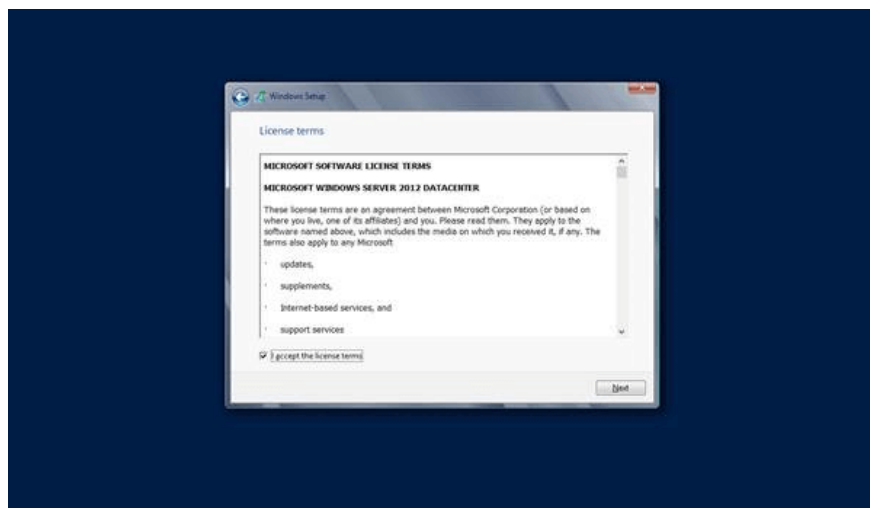
**Step 6:** The installation process starts and it will load all necessary files, the screen will look like the following:



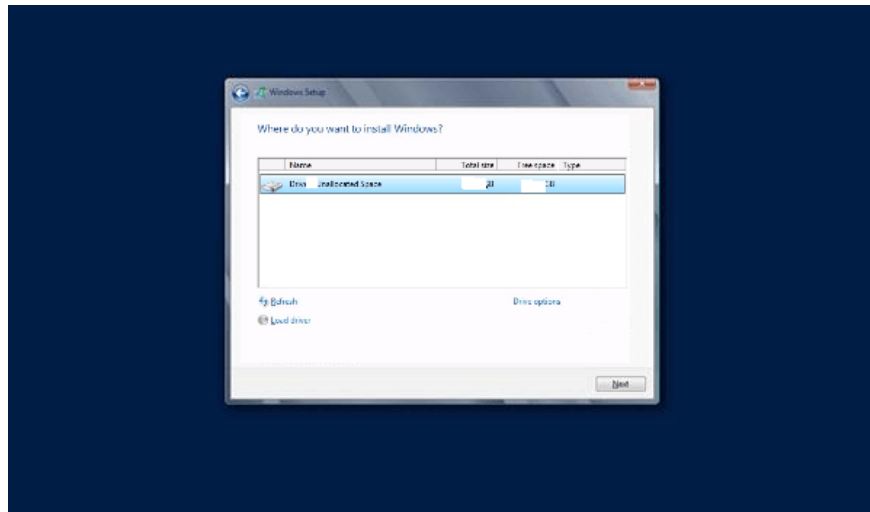
**Step 7:** Wait until the following screen appears, select the **DataCenter Evaluation Server (Server with GUI)** to use Windows Server with the graphical interface and click **Next** .



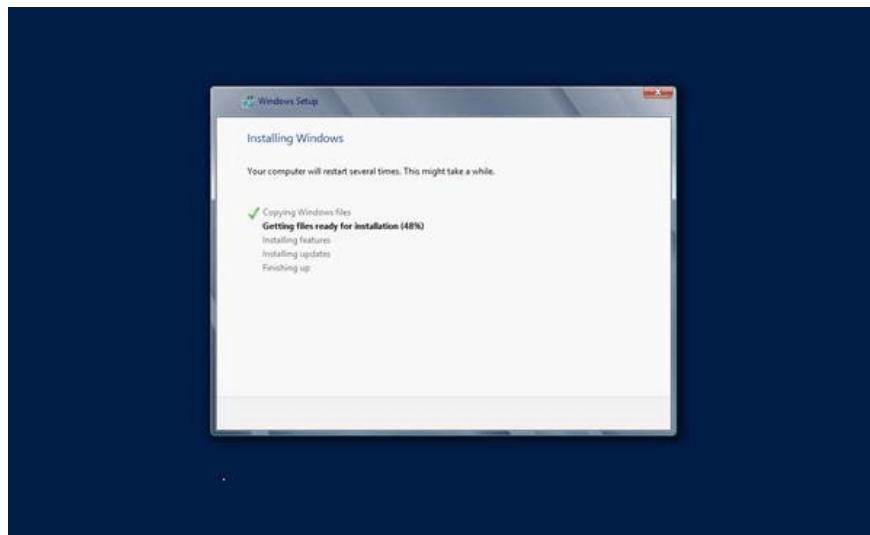
**Step 8:** Click **I accept the license terms** and click **Next** .



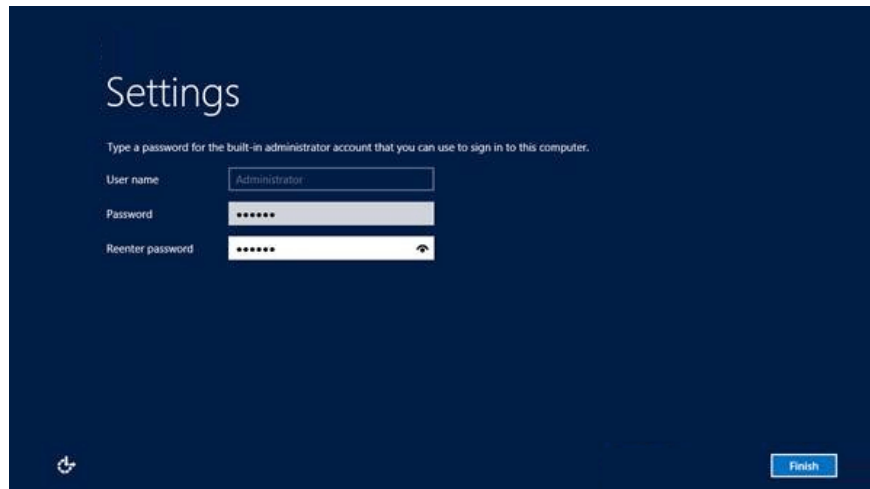
**Step 9:** The screen below appears. In **Driver Options** , create a new partition, delete or format the hard drive. After completing this process, you can select the partition to install Windows Server 2012. Then click **Next** .



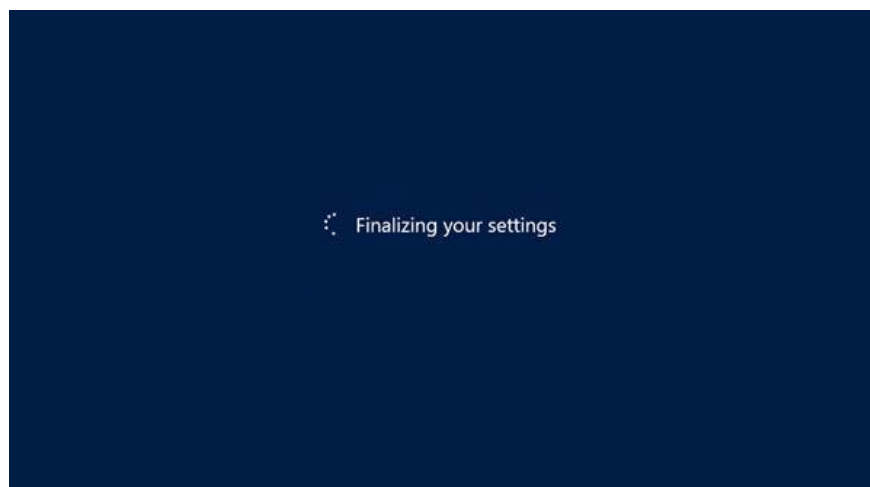
**Step 10:** Wait for the installation process to complete (about 20 minutes) and the server will restart.



**Step 11:** After restarting, the screen below will appear. You set the password for the server and click **Finish** .



**Step 12:** It takes a few minutes for the settings to be completed.



**Step 13:** When the installation is completed, you have completed the installation of Windows Server 2012. The screen below will appear.



You press **Ctrl + Alt + Delete** to login to the server.

Explore more:

1. Free Microsoft Labs repositories include: Windows Server, SQL Server and many other services
2. How to install dual boot Windows 10 and Windows Server
3. What does Windows Server 2016 bring to small and medium businesses?
4. Instructions for creating a Domain Controller - DC on Windows Server 2012

You finished reading the article "**Instructions for installing Windows Server 2012 step by step**" edited by the [TipsMake](#) team. We hope this article has provided you with many useful tech tips and tricks. You can search for similar articles on tips and guides. Thank you for reading and for following us regularly.