

Instructions for installing MS SQL Server

This is a step by step guide to installing MS SQL Server.

SQL Server supports 2 installation types:

1. Standalone
2. Based on Cluster

First of all, check:

1. Remote access protocol RDP - Remote Desktop Protocol - for the server.
2. Bit structure of operating system, IP and server domain.
3. Is your account in the administrative group to run the setup.exe file?
4. Location to store software on the device.

Required for the 2005 version

1. Supported installation files.
2. .NET Framework 2.0.
3. SQL Server client version.

Required for Windows Server 2008 and 2008R2 versions

1. Supported installation files.
2. .NET Framework 3.5 SP1.
3. SQL Server client version.
4. Windows Installer 4.5 or later.

Required for Windows Server 2012 and 2014 versions

1. Supported installation files.
2. .NET Framework 4.0.
3. SQL Server client version.
4. Windows Installer 4.5 or later.
5. Windows PowerShell 2.0.

Steps to install MS SQL Server

Step 1 : Download the Evaluation version here. <http://www.microsoft.com/download/en/details.aspx?id=29066>
When the download is complete, you will see the files below, depending on the selection of 32-bit or 64bit versions.

ENUx86SQLFULL_x86_ENU_Core.box
ENUx86SQLFULL_x86_ENU_Install.exe
ENUx86SQLFULL_x86_ENU_Lang.box

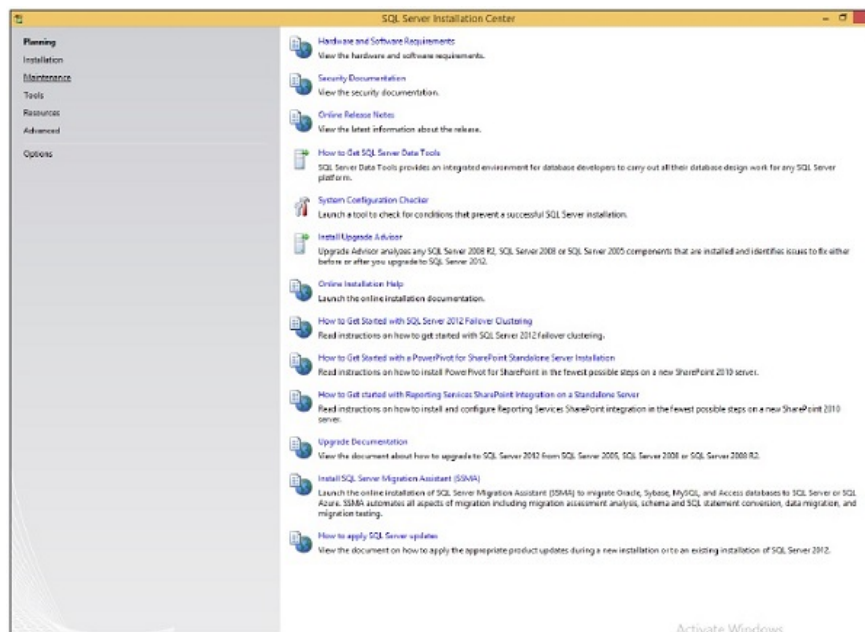
or

ENUx86SQLFULL_x64_ENU_Core.box
ENUx86SQLFULL_x64_ENU_Install.exe
ENUx86SQLFULL_x64_ENU_Lang.box

Step 2 : Double-click the **SQLFULL_x86_ENU_Install.exe** file or **SQLFULL_x64_ENU_Install.exe**, extract the necessary files to install into the **SQLFULL_x86_ENU** or **SQLFULL_x64_ENU** folder .

Step 3 : Open the **SQLFULL_x86_ENU** or **SQLFULL_x64_ENU** folder and double-click the **SETUP** file . The instructions below will install the **SQLFULL_x64_ENU** version .

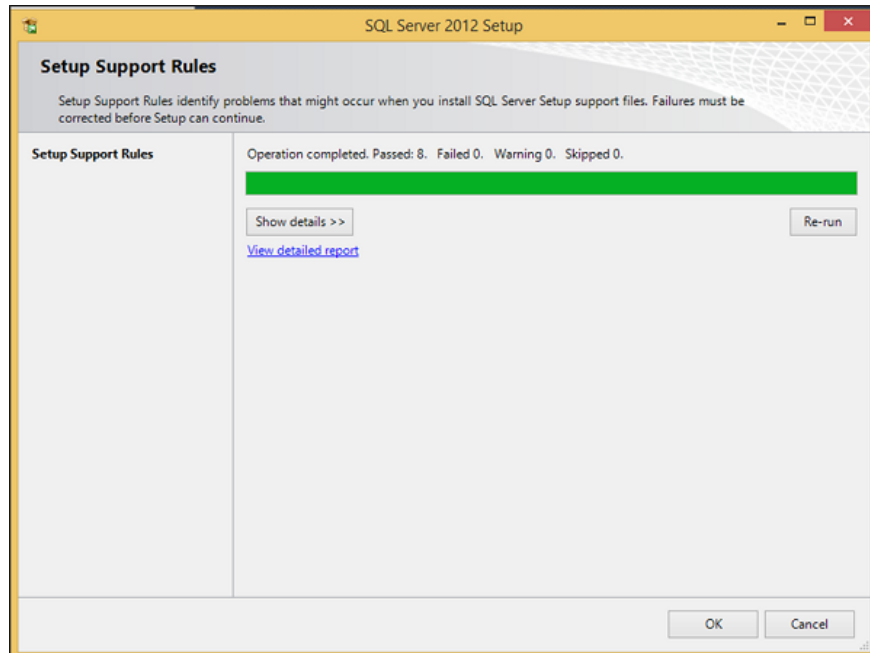
Step 4 : After clicking on the **SETUP** file, the screen below will appear.



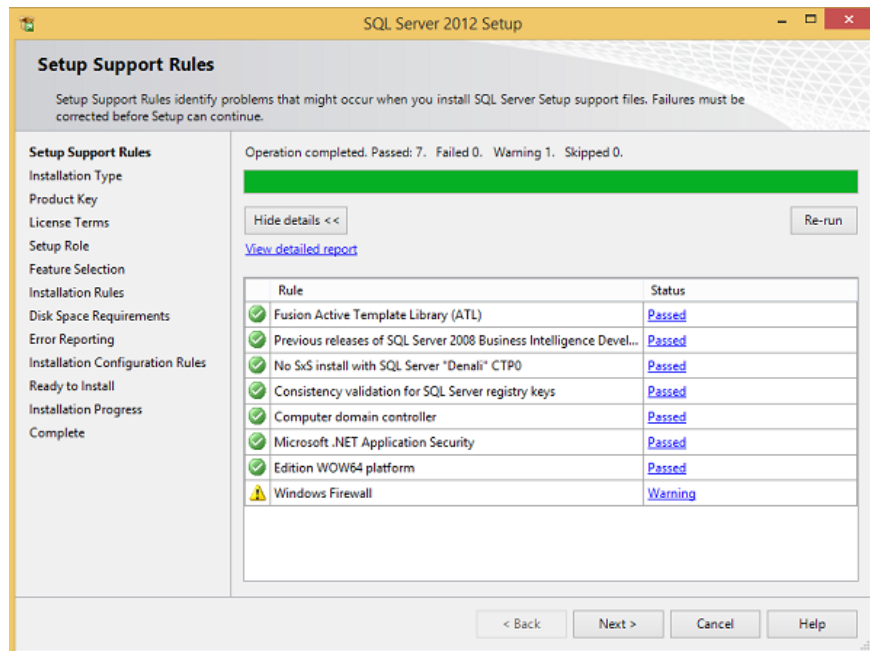
Step 5 : Click **Installation** on the left side of the screen above.



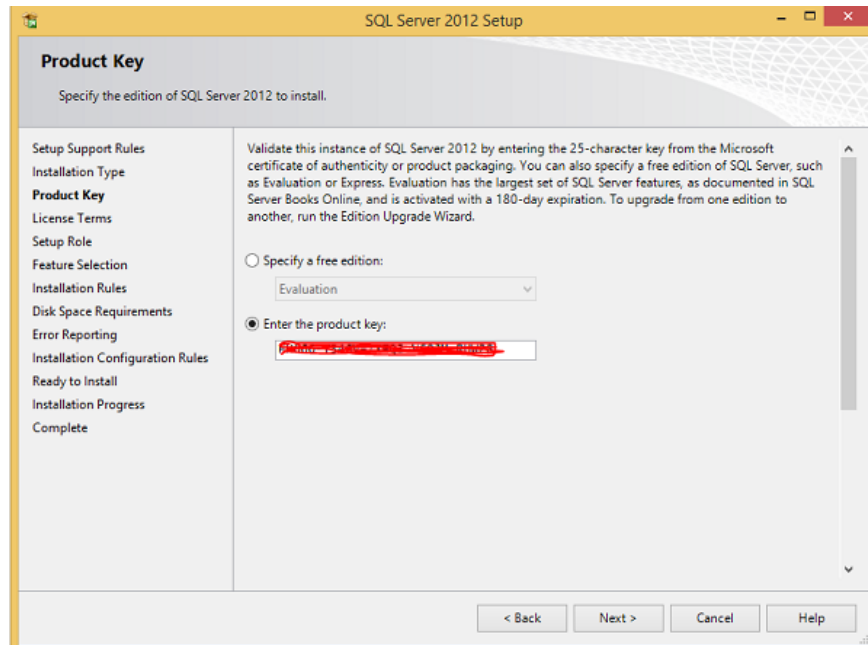
Step 6 : Click the first option to the right of the screen above. Then, the screen below will appear.



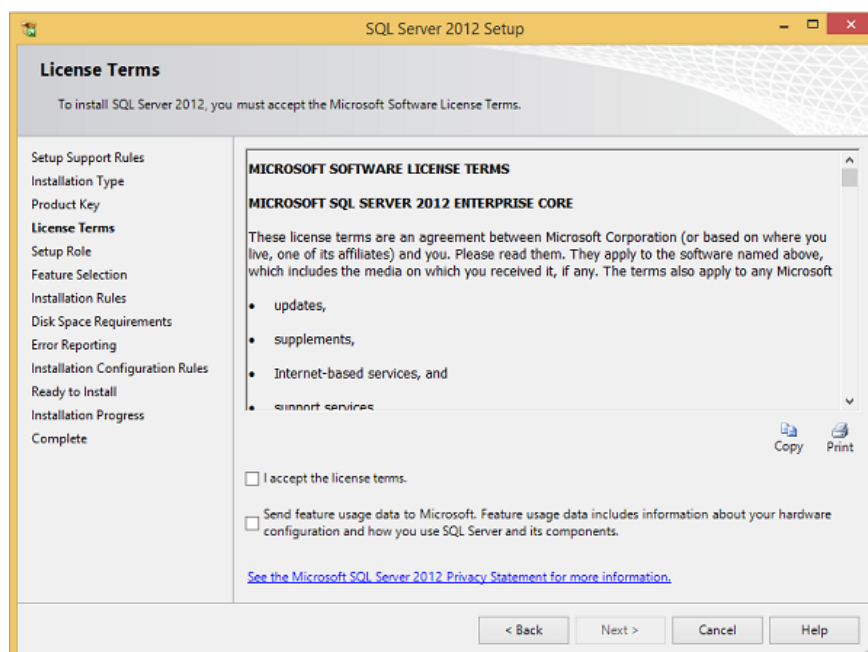
Step 7 : Click **OK** and the following message screen will appear.



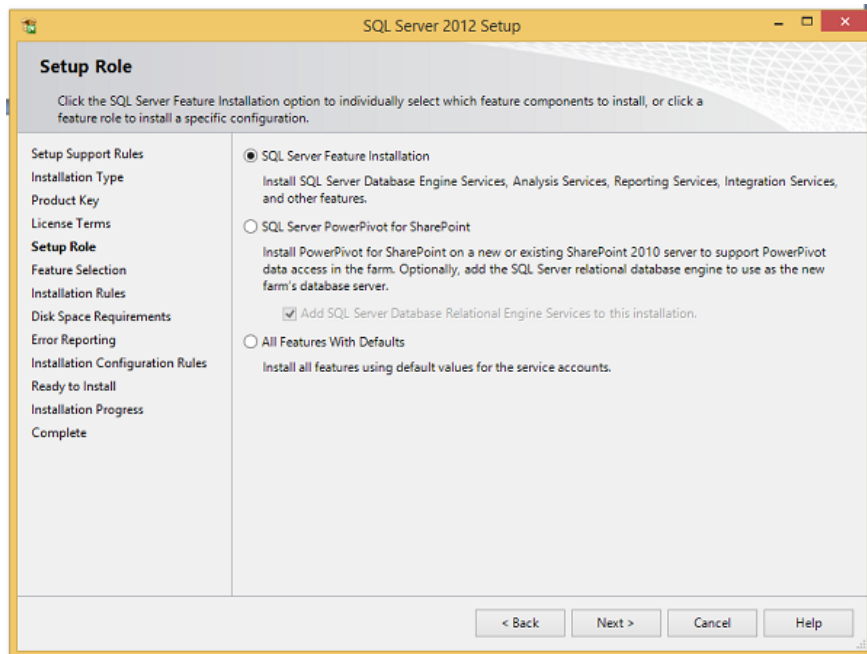
Step 8 : Click **Next** to display the screen below.



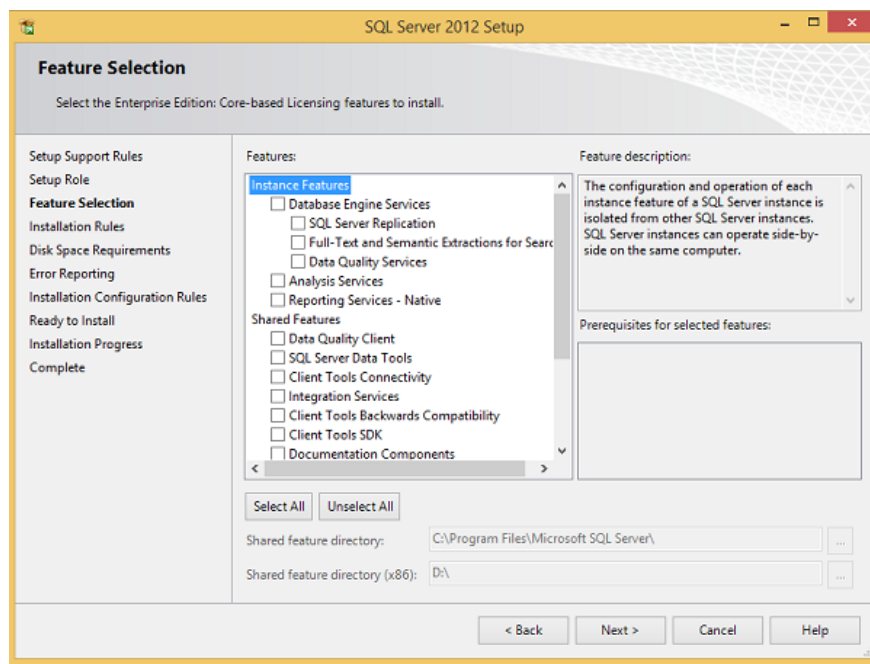
Step 9 : Make sure you check the correct key and click **Next**.



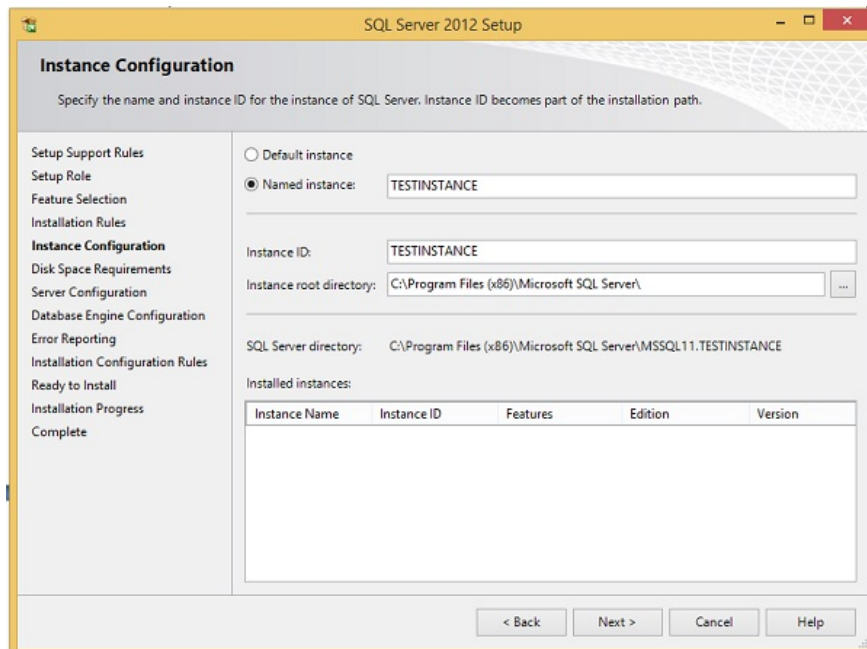
Step 10 : Select the dialog box to approve the copyright rules and click **Next**.



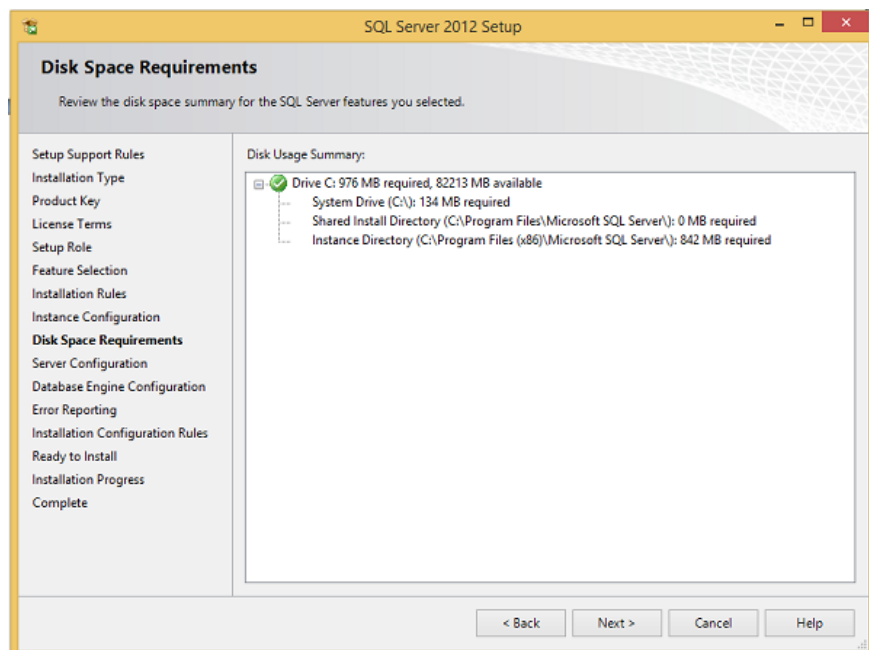
Step 11 : Select SQL Server Feature Installation and click Next.



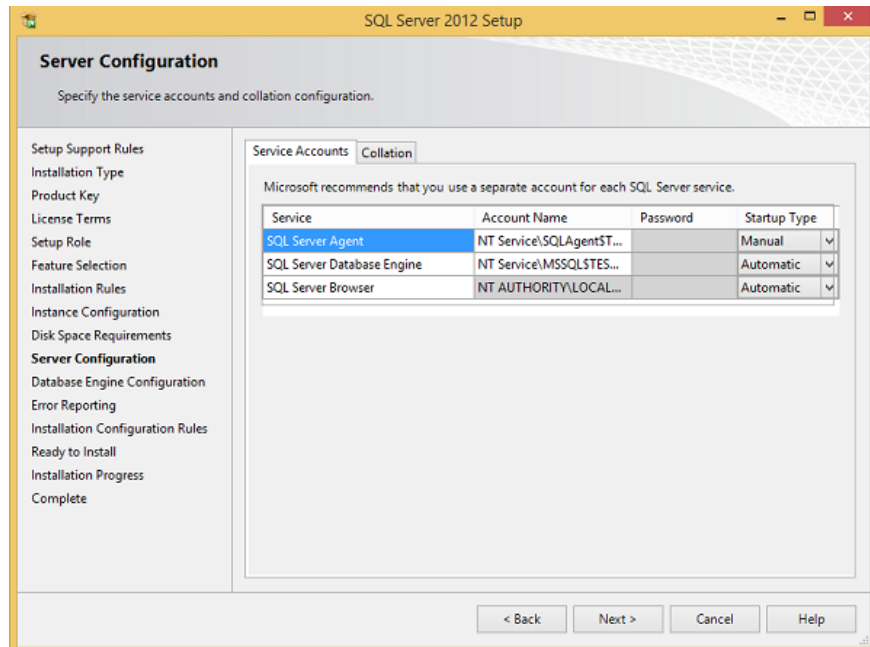
Step 12 : Select the database services and select Next.



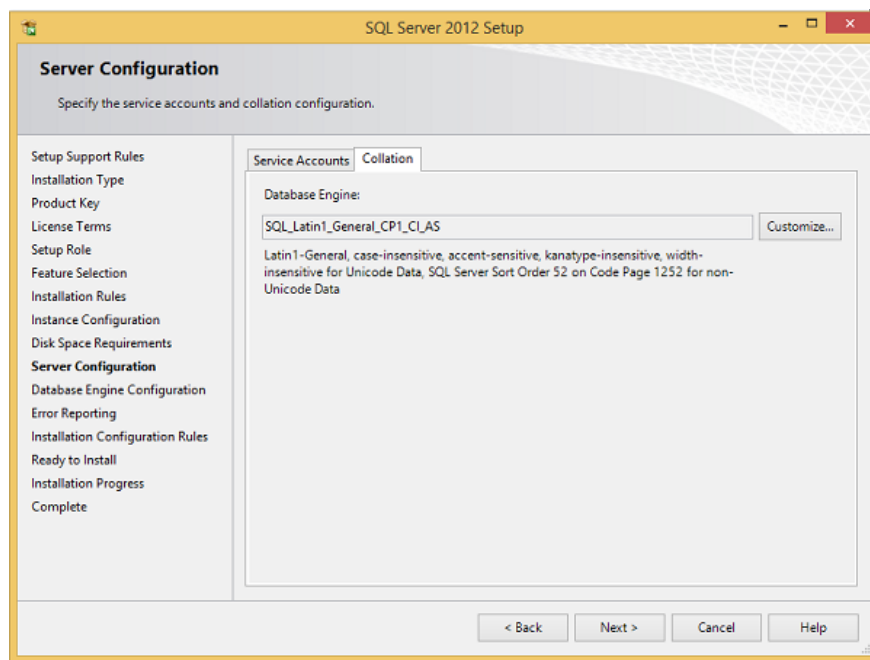
Step 13 : Enter a name for Instance (here use the name **TestInstance**) and select **Next**.



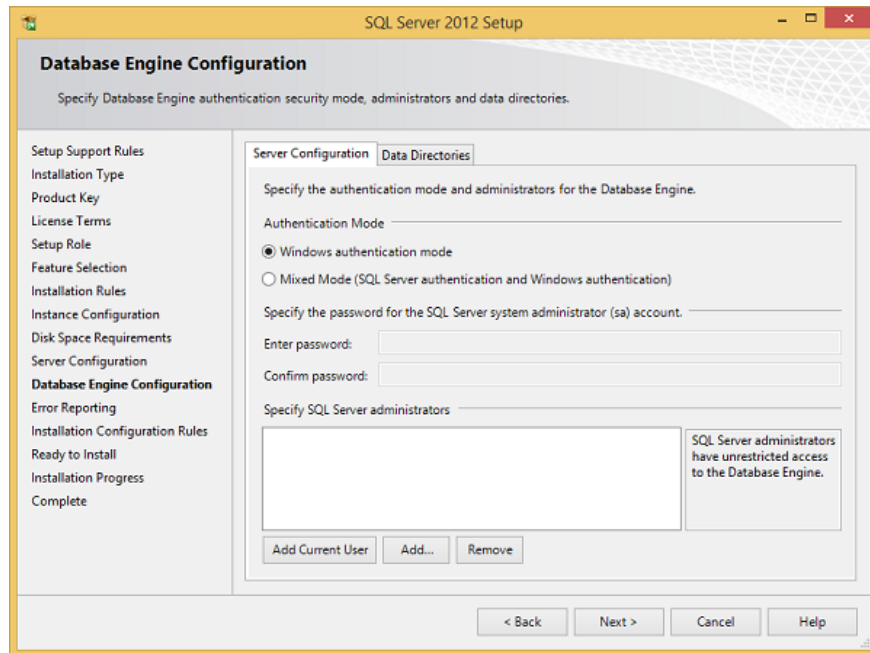
Step 14 : Click **Next** on the screen above, then the screen below will appear.



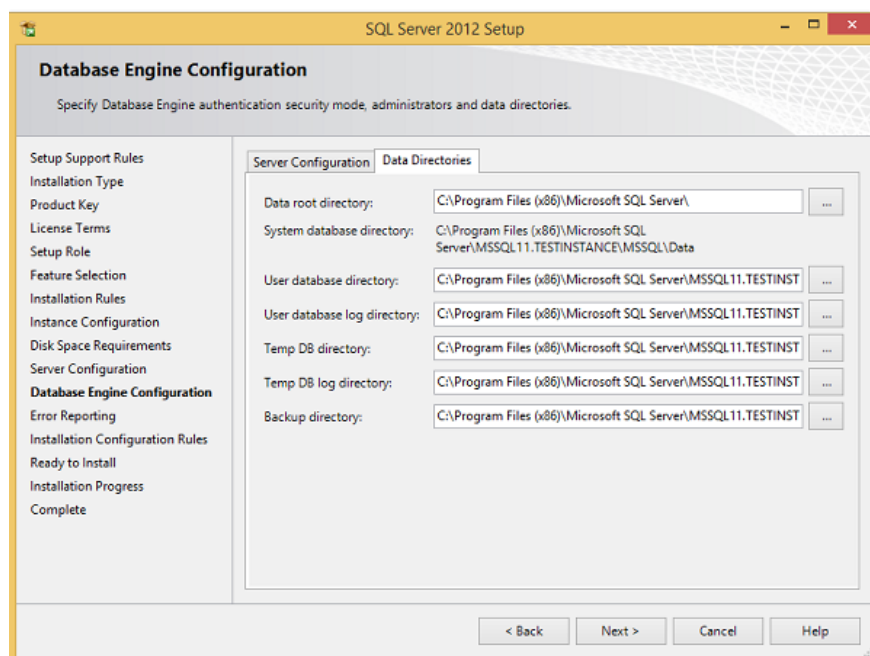
Step 15 : Select the services and startup forms for those services and select **Collation**.



Step 16 : Make sure to choose Collation correctly and select **Next**.



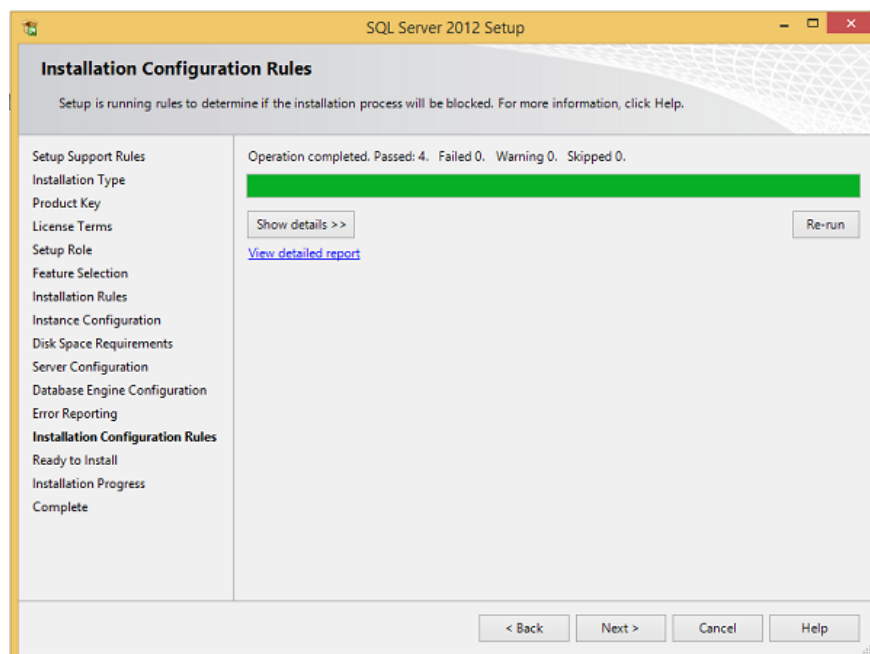
Step 17 : Make sure to select the authentication mode and select the **Data Directories** tab .



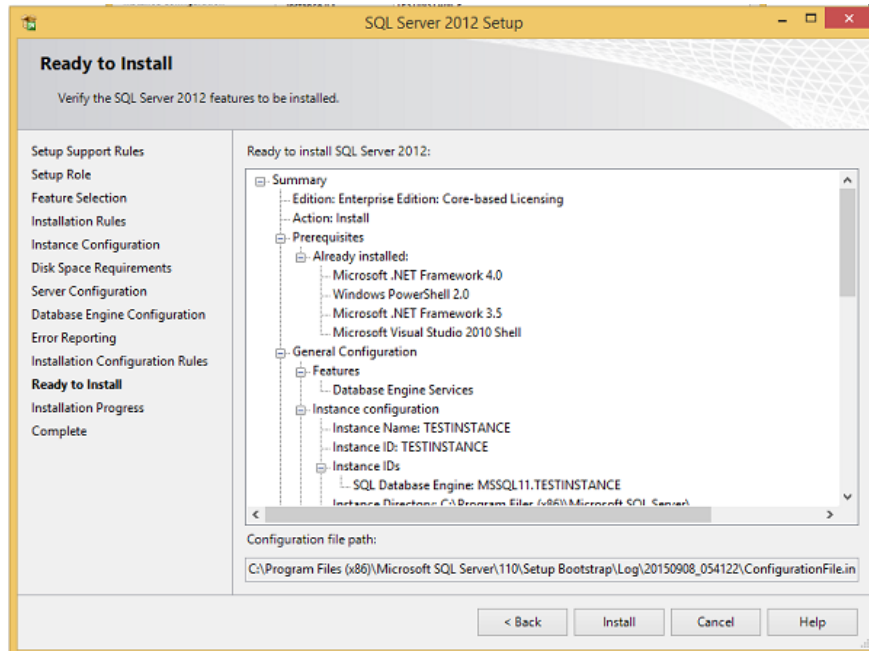
Step 18 : Select the directory address above and click **Next**. Then the screen below will appear.



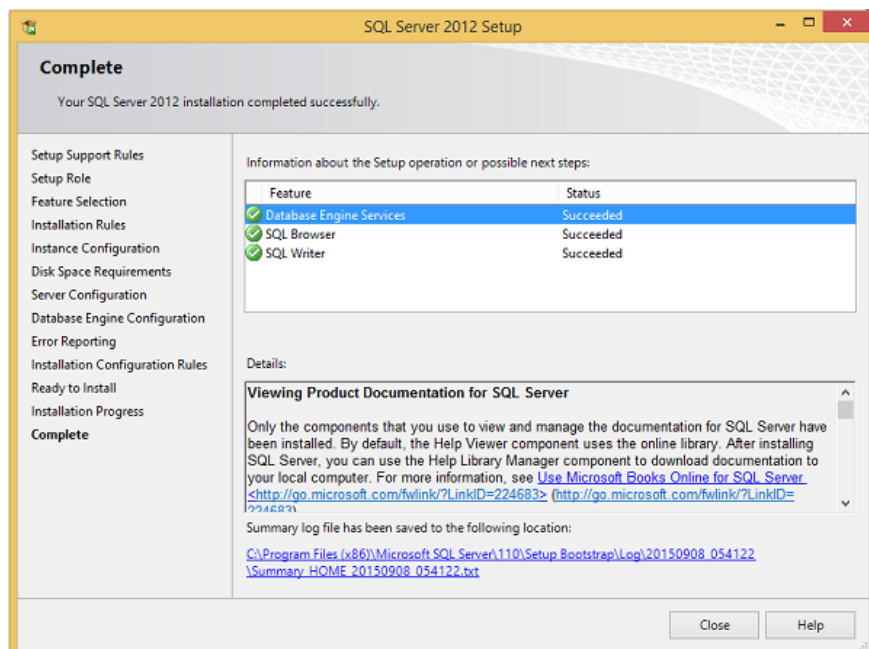
Step 19 : Click **Next** on the screen above.



Step 20 : Click **Next** on the screen above, the screen below will appear.



Step 21 : Check that the options above are correct, then select **Install**.



Wait a while, when the installation process finishes, the screen above will appear. Select **Close** to end the installation.

Previous article: MS SQL Server versions

Next article: Architecture of SQL Server

You finished reading the article "**Instructions for installing MS SQL Server**" edited by the [TipsMake](#) team. We hope this article has provided you with many useful tech tips and tricks. You can search for similar articles on tips and guides. Thank you for reading and for following us regularly.

