

# Instructions for installing Google Chrome on Ubuntu operating system

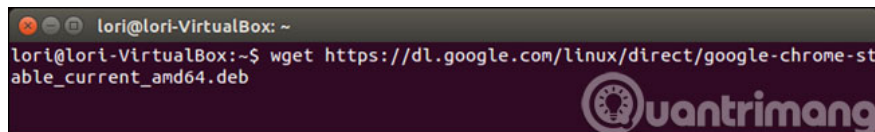
If you have tried installing the Google Chrome browser on Ubuntu, it will realize that it is not available in Ubuntu Software Center. However, downloading Google Chrome and installing it is not too difficult. TipsMake.com will guide you in the article below.

If you have tried installing the **Google Chrome** browser on Ubuntu, it will realize that it is not available in Ubuntu Software Center. However, downloading Google Chrome and installing it is not too difficult. TipsMake.com will guide you in the article below.

1. Download Ubuntu (32 bit) 12.04.4
2. Download Ubuntu (64 bit) 12.04.4

Before downloading Google Chrome, you need to determine if your operating system is **32** or **64 bit** . Once it's determined, press **Ctrl + Alt + T** to open the **Terminal** window and type the following command into the "prompt" and press **Enter** .

```
wget https://dl.google.com/linux/direct/google-chrome-stable_current_amd64.deb
```



The image shows a terminal window with a dark background. The prompt is 'lori@lori-VirtualBox: ~'. The command entered is 'wget https://dl.google.com/linux/direct/google-chrome-stable\_current\_amd64.deb'. A watermark for 'uantrimang' is visible in the bottom right corner of the terminal window.

The installation package is downloaded to the current directory while the download is displayed in the **Terminal** window

**Note** : The default folder when you open the Terminal window is your home directory (/ home /).

```
lori@lori-VirtualBox: ~
lori@lori-VirtualBox:~$ wget https://dl.google.com/linux/direct/google-chrome-stable_current_amd64.deb
--2014-11-24 12:37:53-- https://dl.google.com/linux/direct/google-chrome-stable_current_amd64.deb
Resolving dl.google.com (dl.google.com)... 74.125.224.132, 74.125.224.142, 74.125.224.129, ...
Connecting to dl.google.com (dl.google.com)[74.125.224.132]:443... connected.
HTTP request sent, awaiting response... 200 OK
Length: 47976878 (46M) [application/x-debian-package]
Saving to: 'google-chrome-stable_current_amd64.deb'

89% [=====>] 42,727,424 2.54MB/s eta 2s
```

When downloading the file, type the following command into the prompt (or copy) and press **Enter**

```
sudo dpkg -I google-chrome-stable_current_amd64.deb
```

**Note :** The above commands will execute if you do not change the directory when downloading the file and if you have changed the directory, please add the full path to the file. For example: "**/home/lori/google-chrome-stable\_current\_amd64.deb**".

Enter the **password** when asked and press **Enter**

```
lori@lori-VirtualBox: ~
lori@lori-VirtualBox:~$ wget https://dl.google.com/linux/direct/google-chrome-stable_current_amd64.deb
--2014-11-24 12:37:53-- https://dl.google.com/linux/direct/google-chrome-stable_current_amd64.deb
Resolving dl.google.com (dl.google.com)... 74.125.224.132, 74.125.224.142, 74.125.224.129, ...
Connecting to dl.google.com (dl.google.com)[74.125.224.132]:443... connected.
HTTP request sent, awaiting response... 200 OK
Length: 47976878 (46M) [application/x-debian-package]
Saving to: 'google-chrome-stable_current_amd64.deb'

100%[=====] 47,976,878 2.47MB/s in 18s

2014-11-24 12:38:11 (2.56 MB/s) - 'google-chrome-stable_current_amd64.deb' saved
[47976878/47976878]

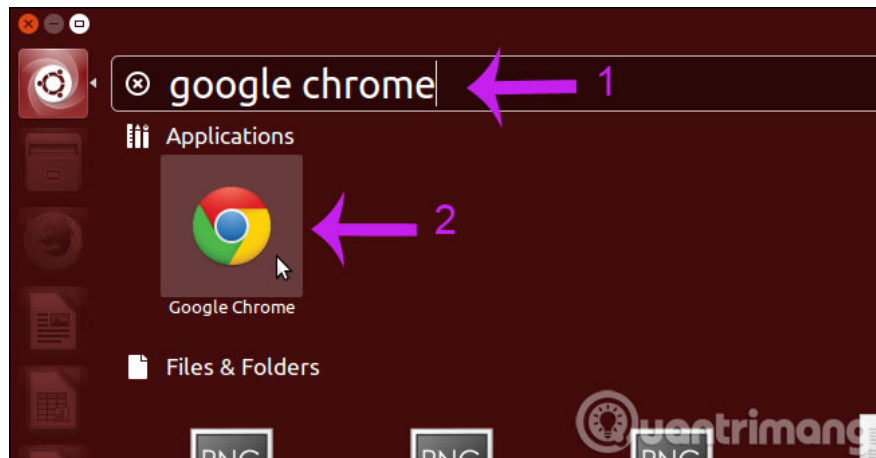
lori@lori-VirtualBox:~$ sudo dpkg -i google-chrome-stable_current_amd64.deb
[sudo] password for lori:
```

When the installation process is finished, type "**exit**" into "**prompt**" or click the "**x**" in the upper left corner to close the **Terminal** window.

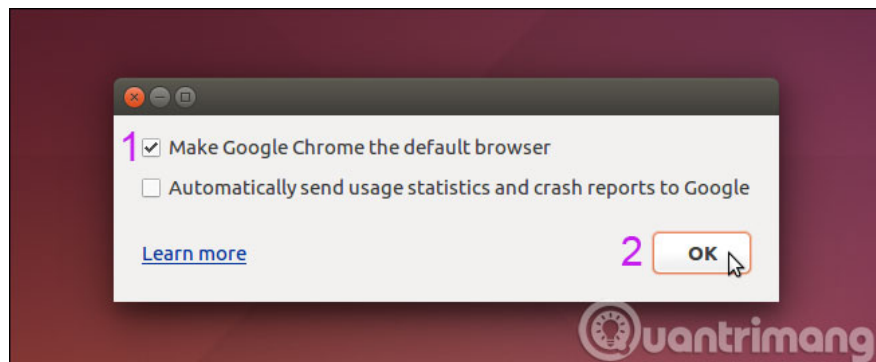
```
lori@lori-VirtualBox: ~
2011-11-24 12:38:11 (2.56 MB/s) - 'google-chrome-stable_current_amd64.deb' saved
[4776878/47976878]

lori@lori-VirtualBox:~$ sudo dpkg -i google-chrome-stable_current_amd64.deb
[sudo] password for lori:
Selecting previously unselected package google-chrome-stable.
(Reading database ... 191086 files and directories currently installed.)
Preparing to unpack google-chrome-stable_current_amd64.deb ...
Unpacking google-chrome-stable (39.0.2171.65-1) ...
Setting up google-chrome-stable (39.0.2171.65-1) ...
update-alternatives: using /usr/bin/google-chrome-stable to provide /usr/bin/x-ww
ww-browser (x-www-browser) in auto mode
update-alternatives: using /usr/bin/google-chrome-stable to provide /usr/bin/gno
me-www-browser (gnome-www-browser) in auto mode
update-alternatives: using /usr/bin/google-chrome-stable to provide /usr/bin/go
gle-chrome (google-chrome) in auto mode
Processing triggers for gnome-menus (3.10.1-0ubuntu2) ...
Processing triggers for desktop-file-utils (0.22-1ubuntu1) ...
Processing triggers for bamfdaemon (0.5.1+14.04.20140409-0ubuntu1) ...
Rebuilding /usr/share/applications/bamf-2.index...
Processing triggers for mime-support (3.54ubuntu1) ...
Processing triggers for man-db (2.6.7.1-1) ...
lori@lori-VirtualBox:~$ exit
```

To open the Google Chrome browser, click on the **Dash** button at the top of the **Unity Launcher** bar and enter the word "**Google Chrome**". When the Google Chrome icon appears, click to open it.

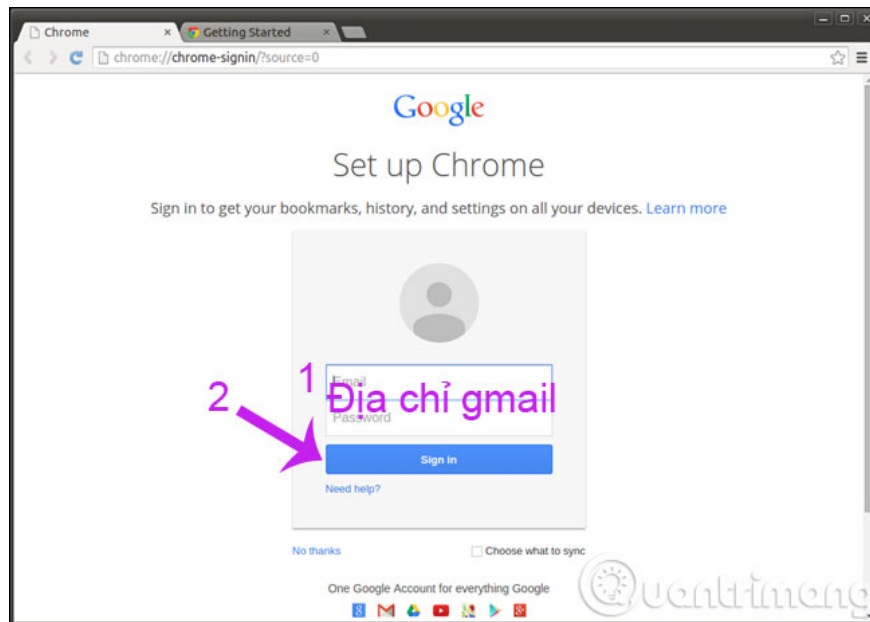


In the first start of Chrome will appear the following dialog box, if you want this to be the default browser, please tick the "**Make Google Chrome the default browser**". Then, click **OK** to close the dialog box.

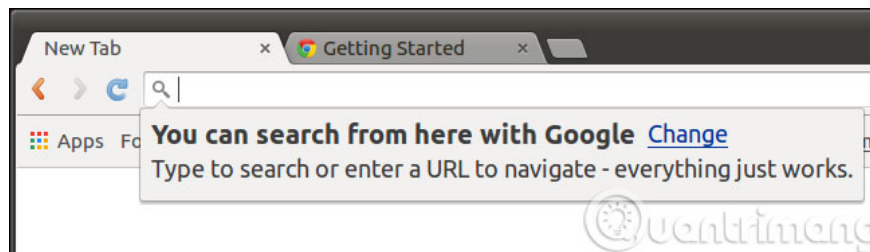


Google Chrome normally opens the "**Set up Chrome**" page (Chrome settings). If you use Chrome on other platforms (Windows), then log in to your Google account to sync and download items such as bookmarks (

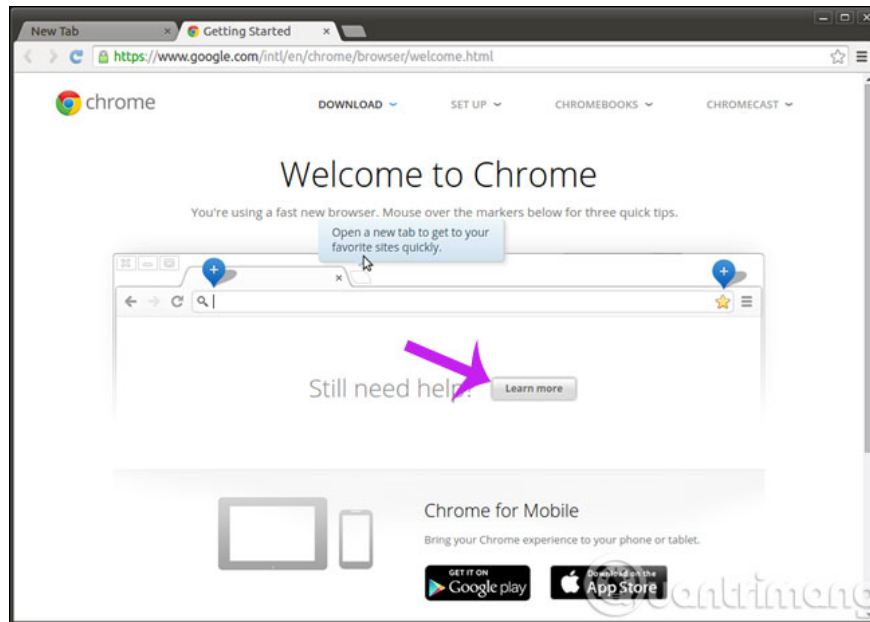
*bookmarks* ), history ( *history* ). If you do not want to sync, you can click on the "**No thanks**" link as shown below.



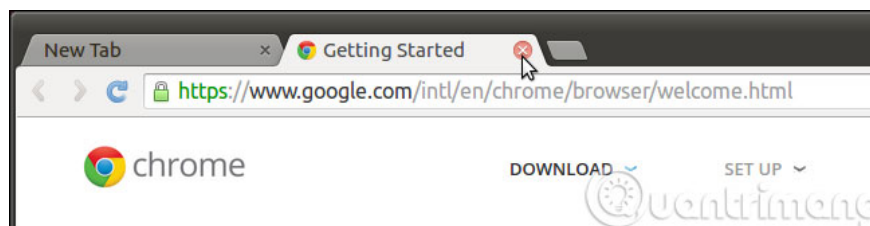
When opening a new page (New Tab) there will be a message line showing that you can use the address bar to search and enter the website access **URL** .



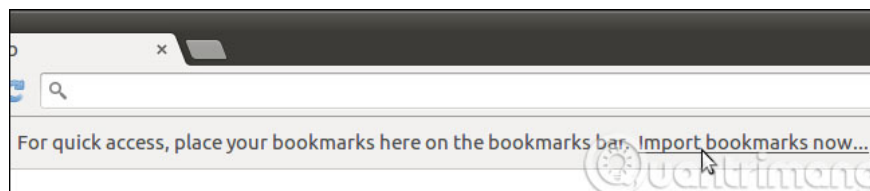
This is the second tab that you opened the first time you ran Chrome. This tab will display the **Welcome to Chrome** page and give you some tips on using Chrome. To find out, click **Learn more** .



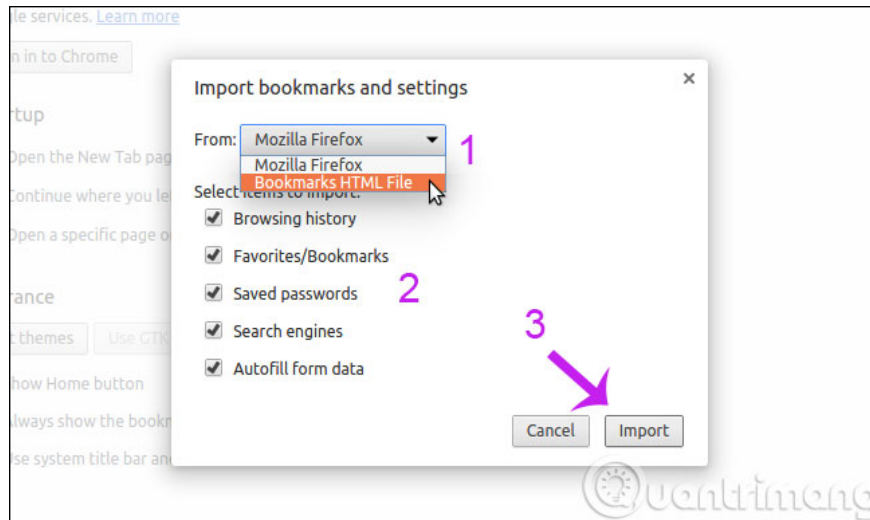
To close the tab, click on the "x" in the upper right corner



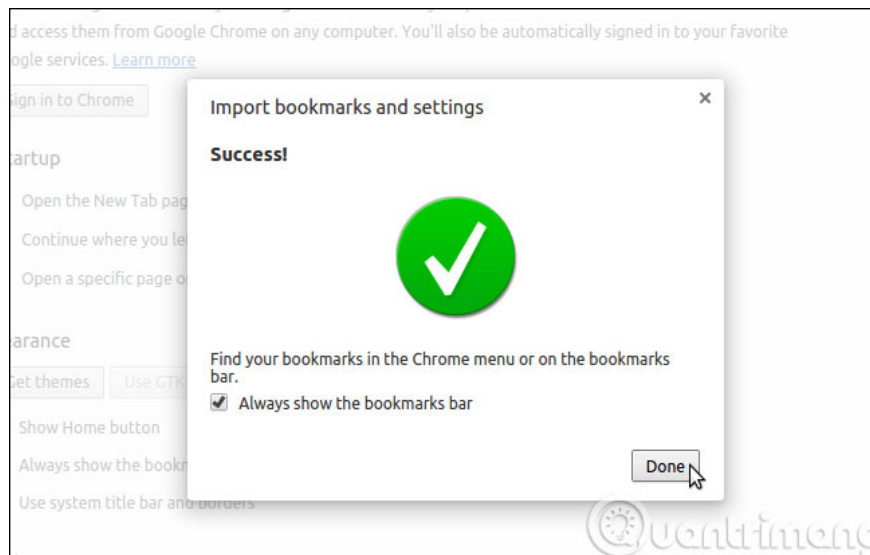
If you do not synchronize data from your Google account, you can import *bookmarks* and settings from other browsers ( *Firefox* ) or from an HTML file. To do so, click on the "**Import bookmarks now .**" link in the upper right corner of the New Tab page.



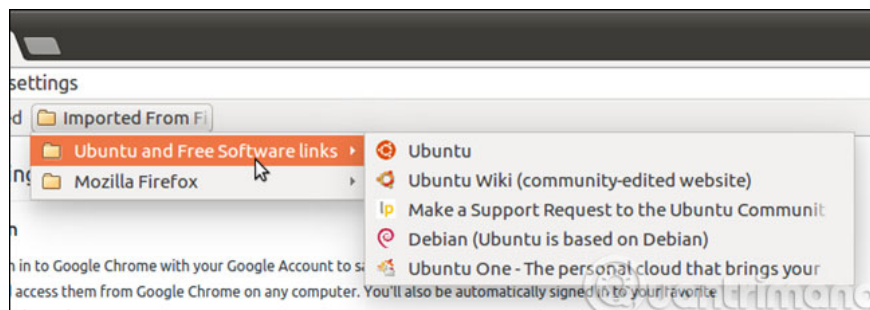
When the '**Import bookmarks and settings**' dialog box opens, click the drop-down arrow to select the data entry source ( *from another browser such as Firefox or from the HTML file* ) and tick the items you want to import. Then click **Import** to start.



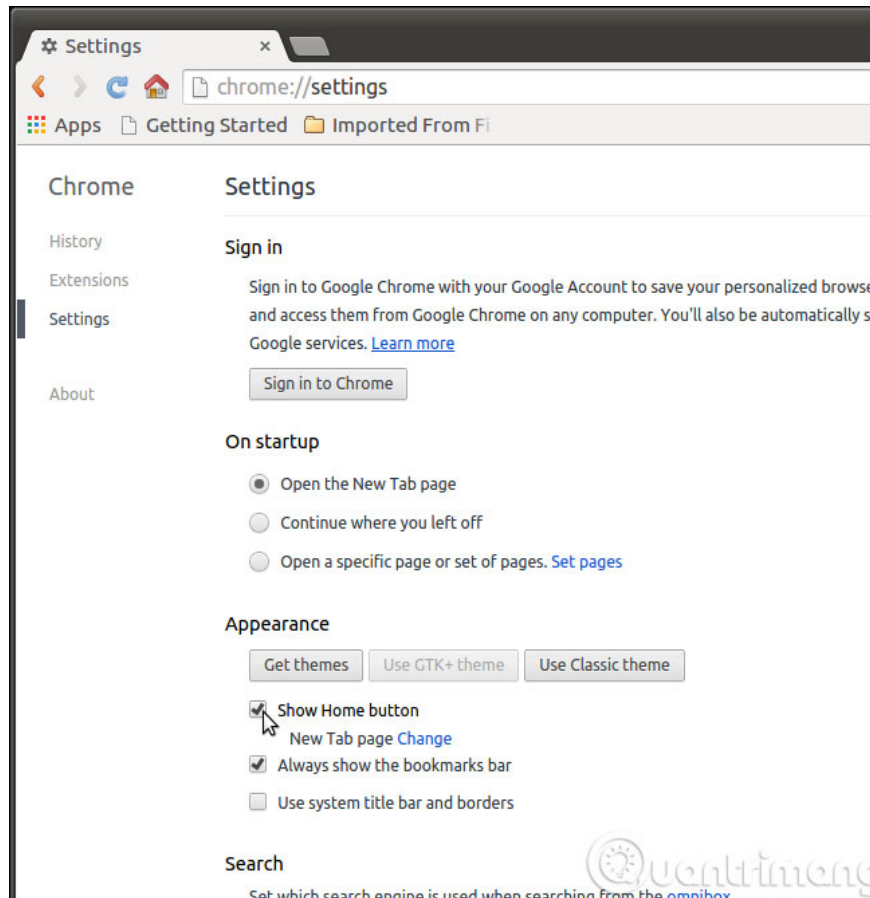
When the data import process is completed, there will be a message box, click **Done** to close



If you import bookmarks from another browser, they will be placed in a folder on the **Bookmarks** bar.

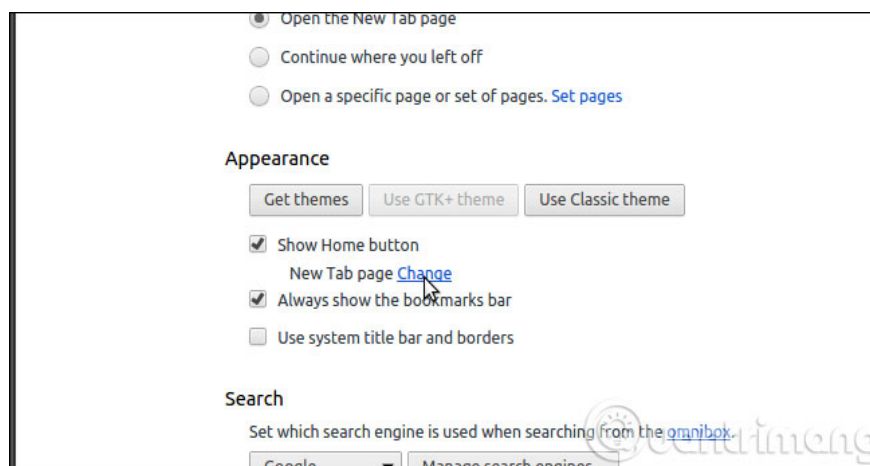


The **Settings** window will allow you to customize your browser. For example, if Chrome does not show the **Home** button, you can add it by clicking the **Show Home** button in the **Appearance** section.

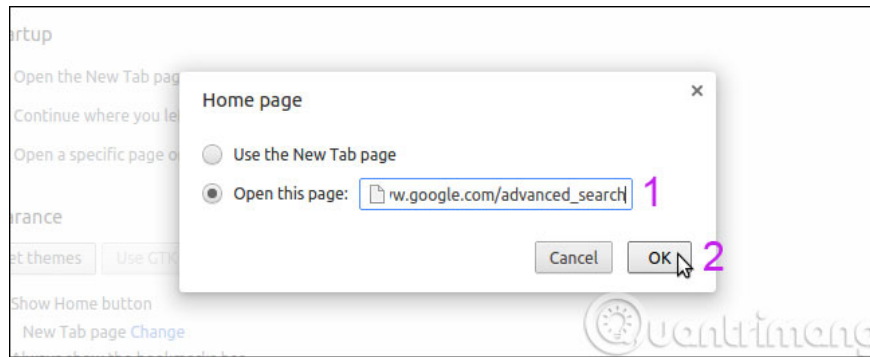


**Note:** If you have not logged in to your Google account, you can click **Sign in Chrome** to start logging in.

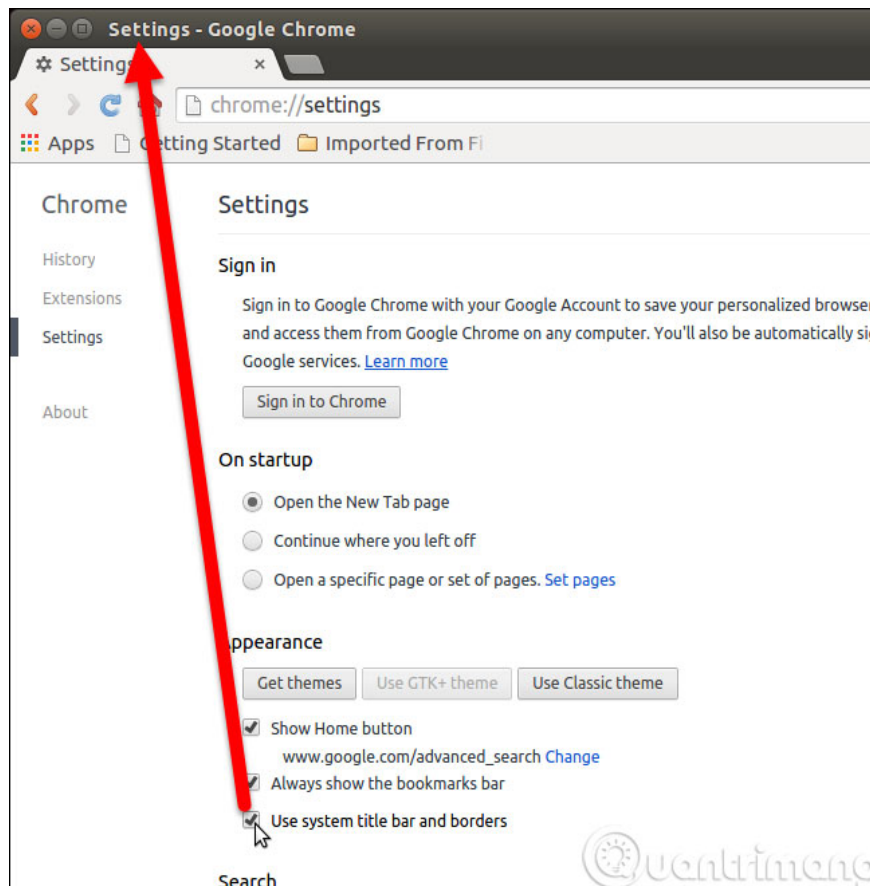
By default, the **New Tab** page will display when you press the **Home** button. However, you can change to any page you want by clicking on the **Change** link as shown below.



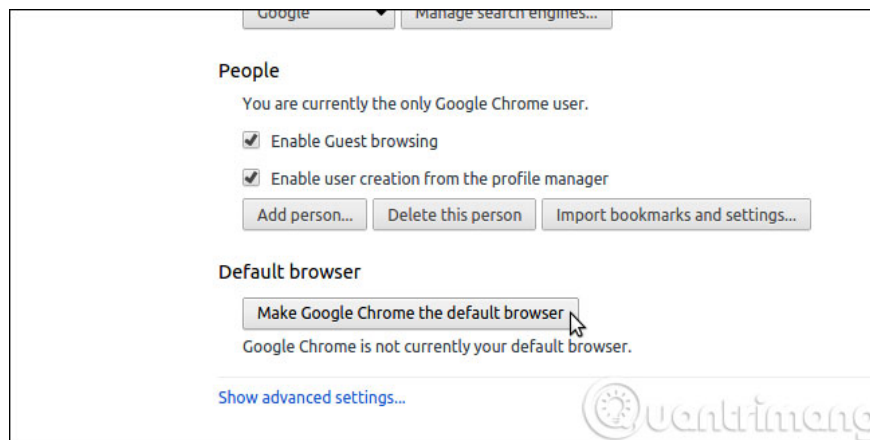
In the **Home page** dialog box, select **Open this page** and enter the website address you want to display when you press the **Home** button



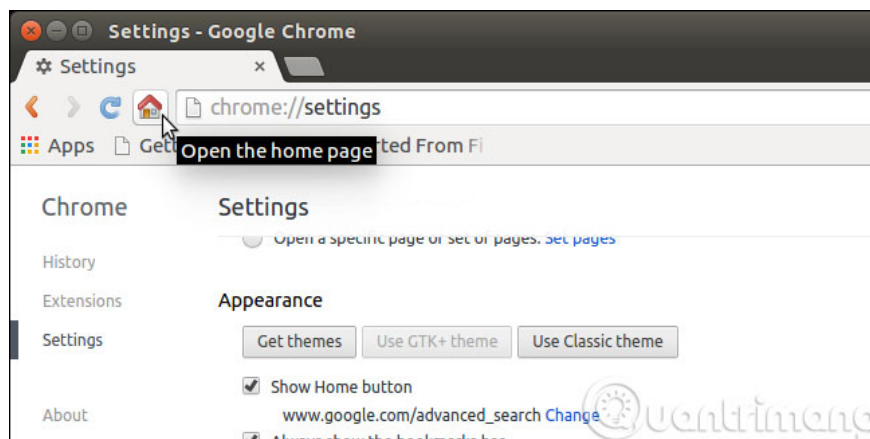
Also by default, the title bar will not be displayed. To display it, please tick the **Use system title bar and borders box**



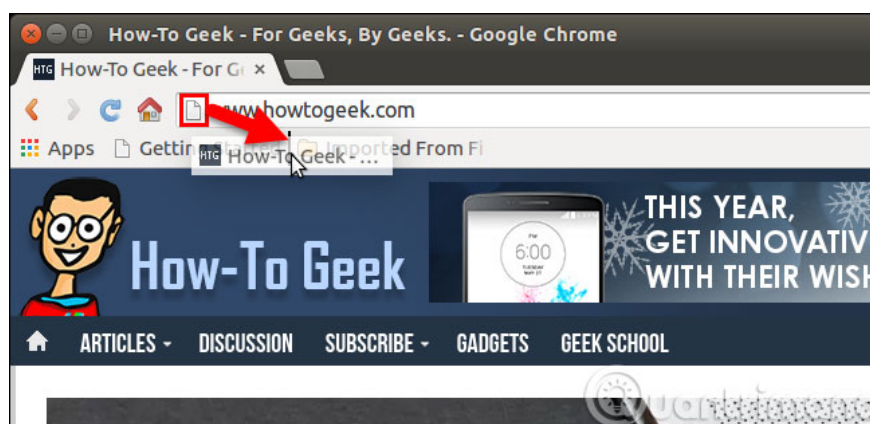
If you want **Google Chrome** to be the default browser, click **Make Google Chrome the default browser**



In addition, you can set up many more features. Once set up, press the **Home** button to return to the home page.



To add bookmarks to favorites, drag the icon in the address bar to the **Bookmarks** bar.



So, we have introduced how to install and basically install Google Chrome on Ubuntu operating system for you. From now on, you can "comfortably" use this browser for Ubuntu operating system.

## Read more:

1. Instructions for installing Ubuntu on VMware Workstation - Part 1

## 2. Instructions for installing Ubuntu on VMware Workstation - Part 2

**Hope the article will be useful to you!**

You finished reading the article "**Instructions for installing Google Chrome on Ubuntu operating system**" edited by the [TipsMake](#) team. We hope this article has provided you with many useful tech tips and tricks. You can search for similar articles on tips and guides. Thank you for reading and for following us regularly.

---