

# Instructions for installing DHCP Role in Windows Server 2012

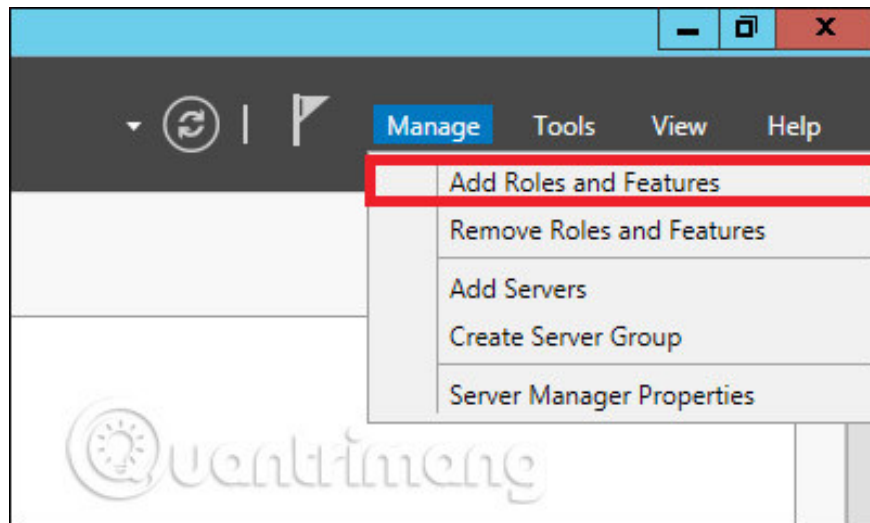
Dynamic Host Configuration Protocol (DHCP) - Dynamic server configuration protocol is the network services that are commonly deployed in the current network environment

As you know Dynamic Host Configuration Protocol (DHCP) - The dynamic server configuration protocol is the network services that are commonly deployed in today's network environment. DHCP is mainly used to automatically distribute IP configuration settings to clients on the network, eliminating manual server configuration, on TCP / IP-based networks.

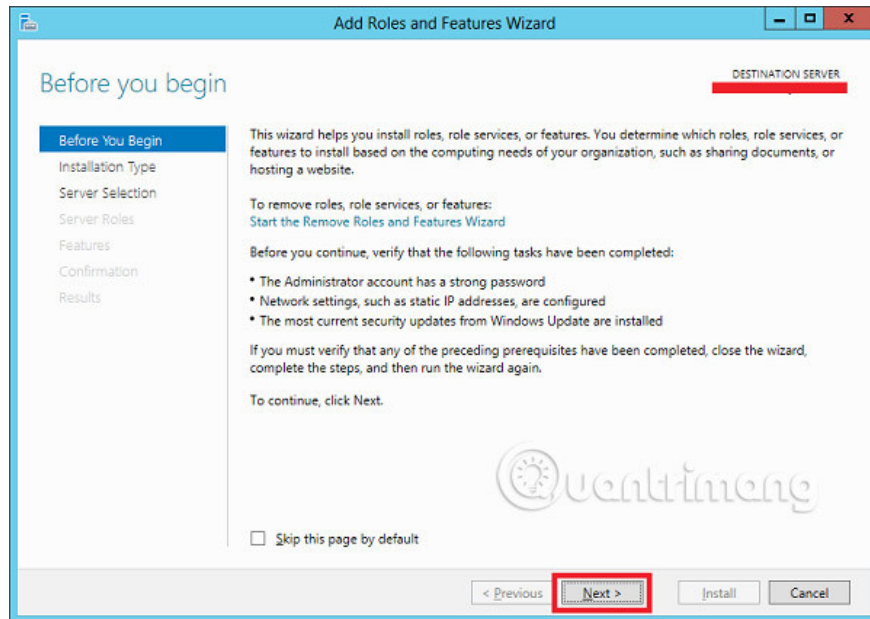
## DHCP role settings

To install the DHCP role, you will have to follow the steps below.

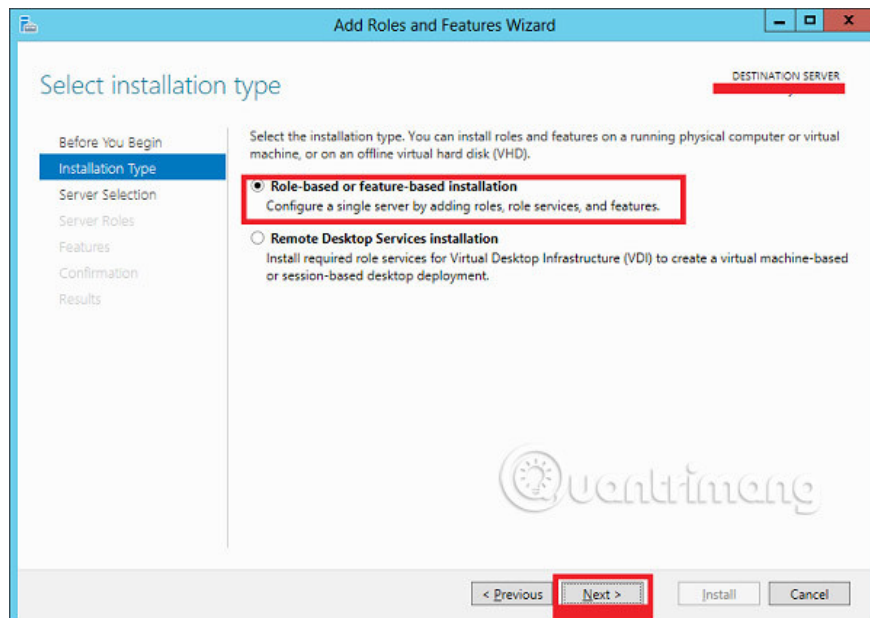
**Step 1 - Switch to Server Manager ? Manage ? Add Roles and Features .**



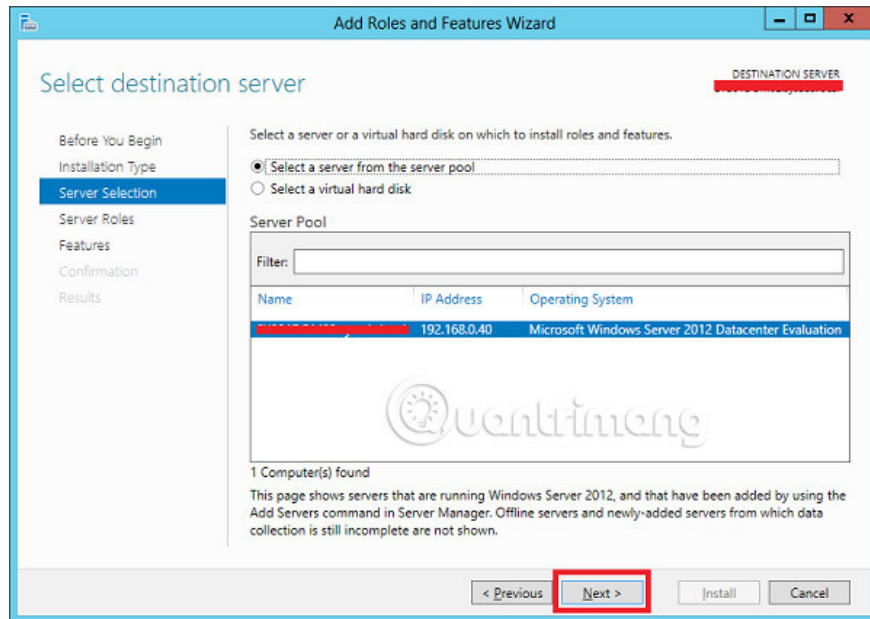
**Step 2 - Click Next .**



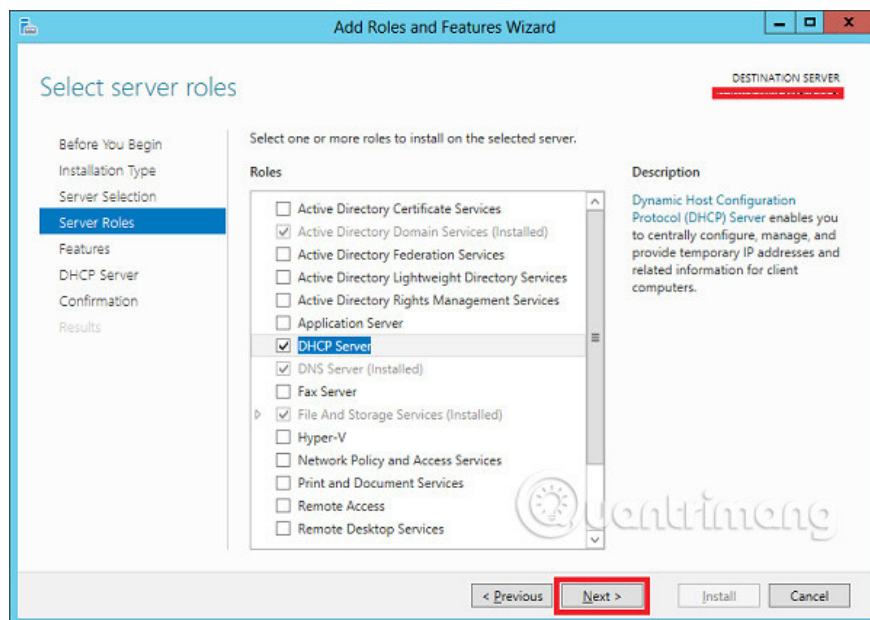
**Step 3 - Select Role-based or feature-based installation option ? click Next .**

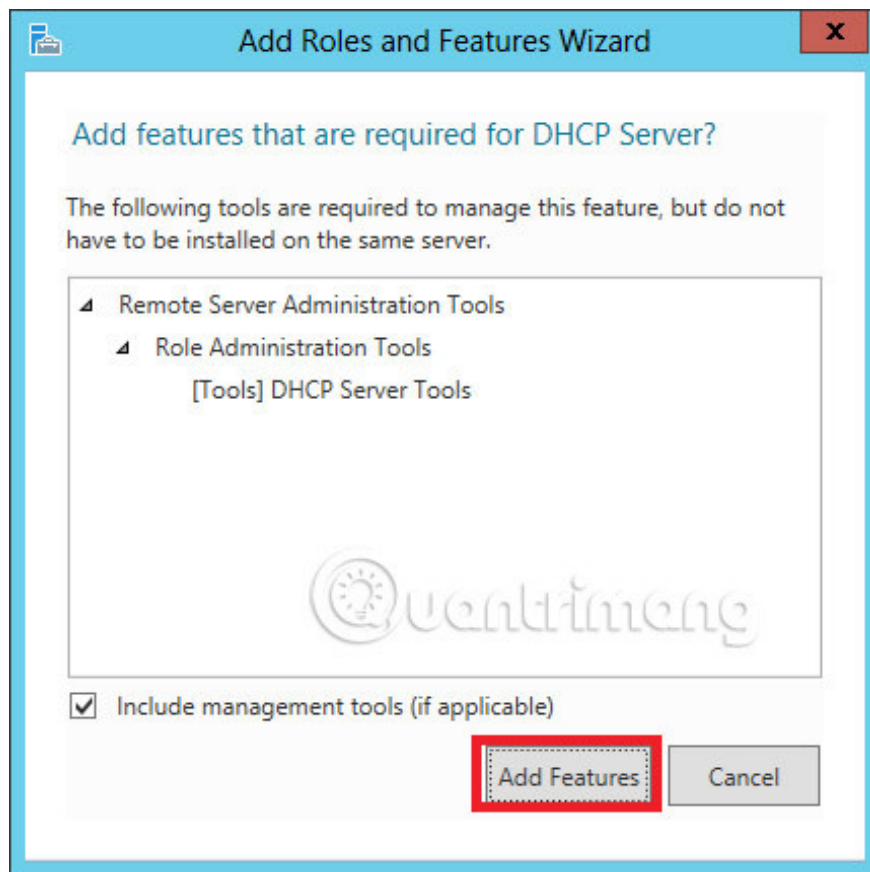


**Step 4 - Install the Local DHCP Role because it will select a server from the Pool Server ? then click Next .**

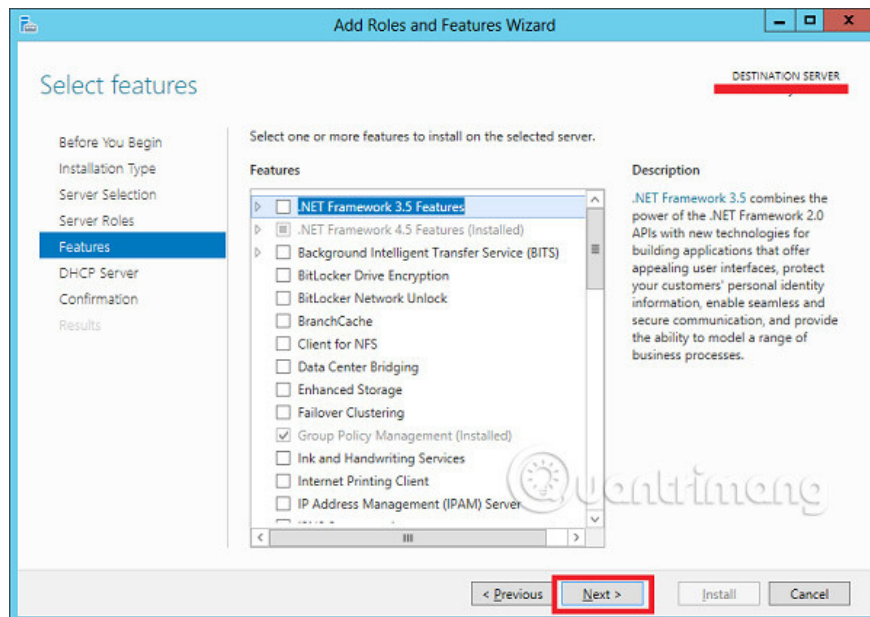


**Step 5** - From the **Roles lists** , select **DHCP Server** role ? click **Add Features** on the window that appears as shown in the following screenshots.

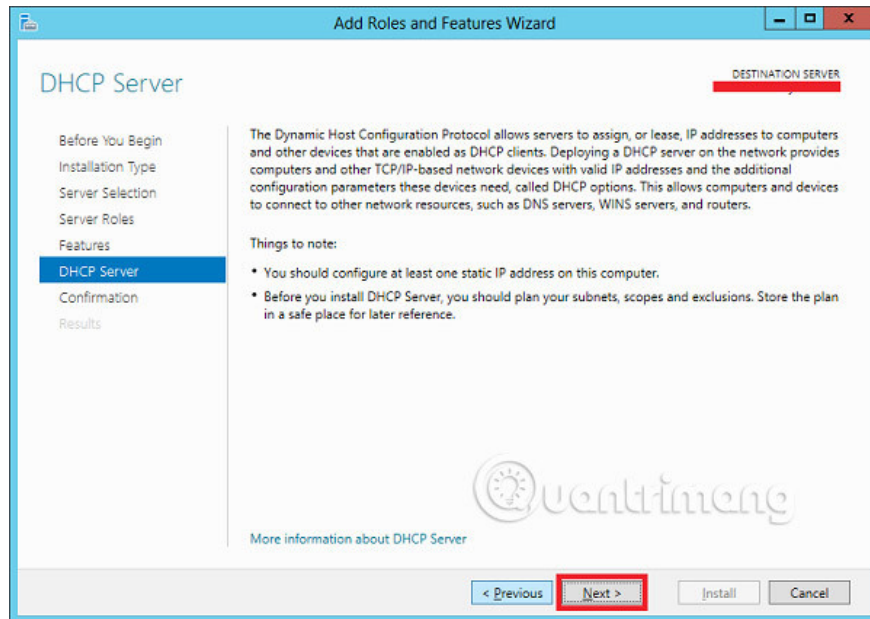




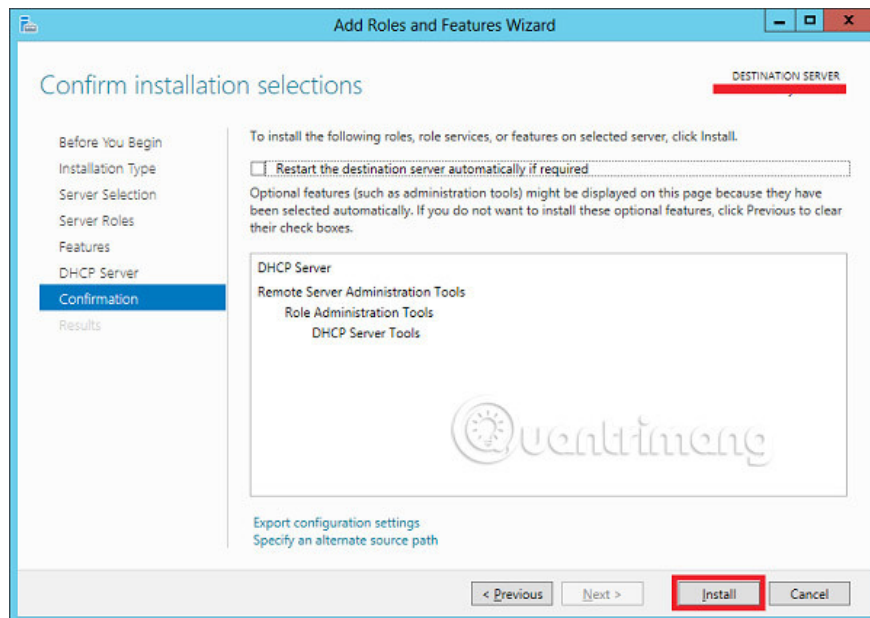
Step 6 - Click Next .



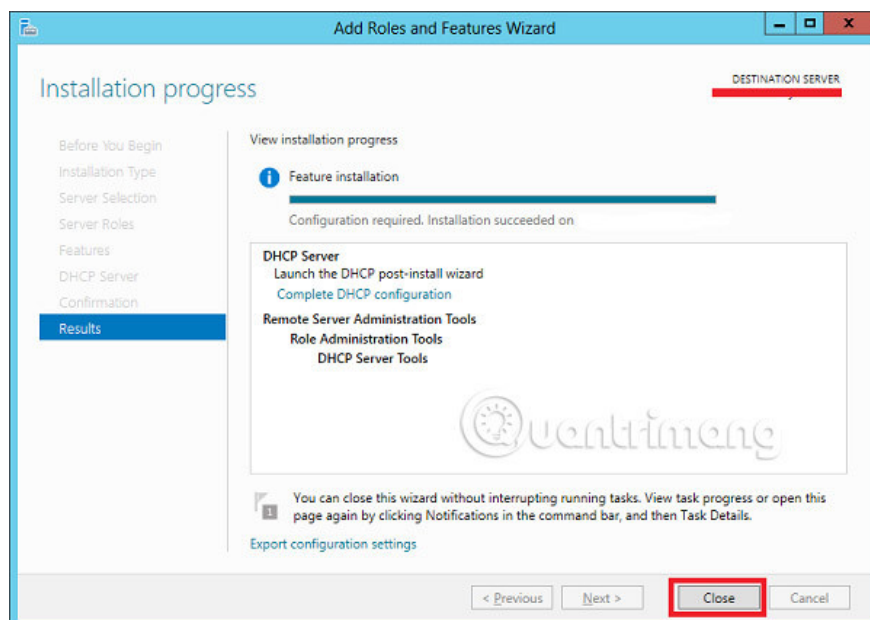
Step 7 - Click Next .



**Step 8 - Click Install .**



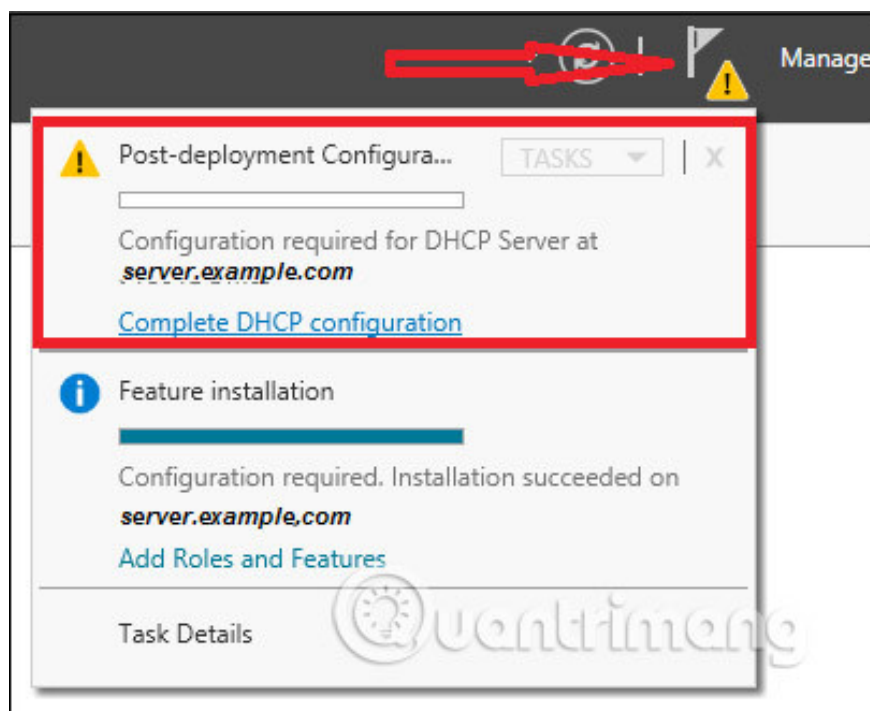
**Step 9 - Click Close .**



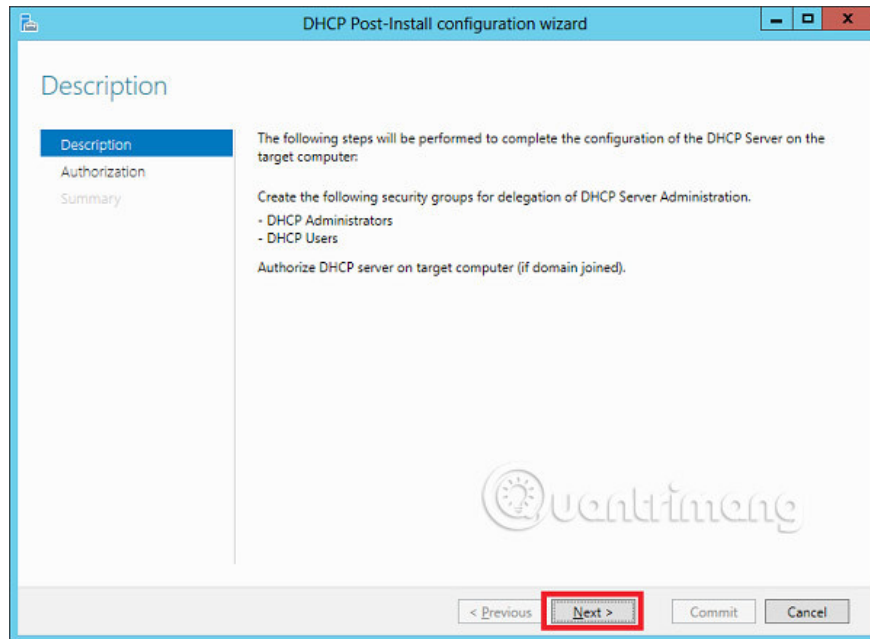
## Configuration after deployment

In this section, we will see how to perform the post-deployment configuration of DHCP. Please follow the steps below.

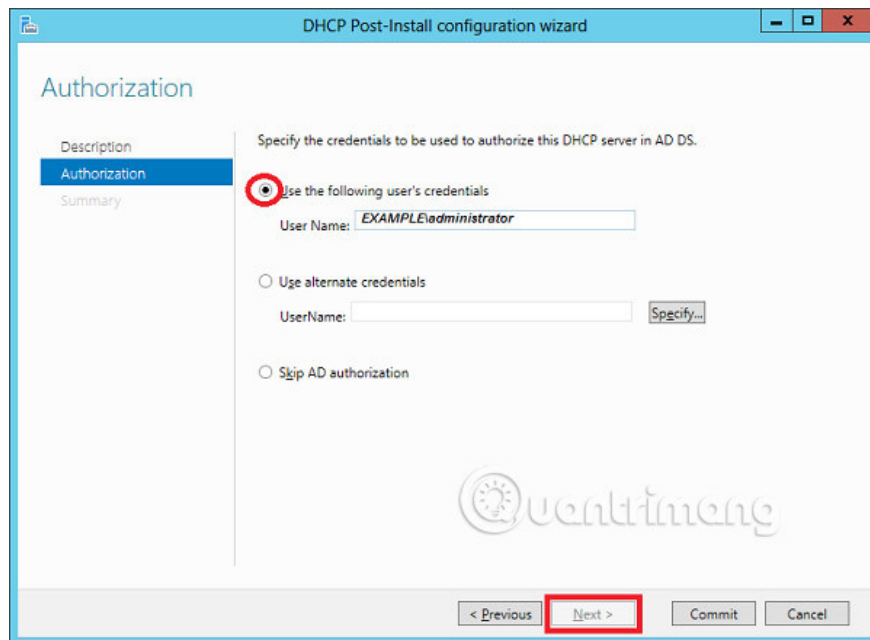
**Step 1** - Click the warning icon and then click " **Complete DHCP Configuration** " .



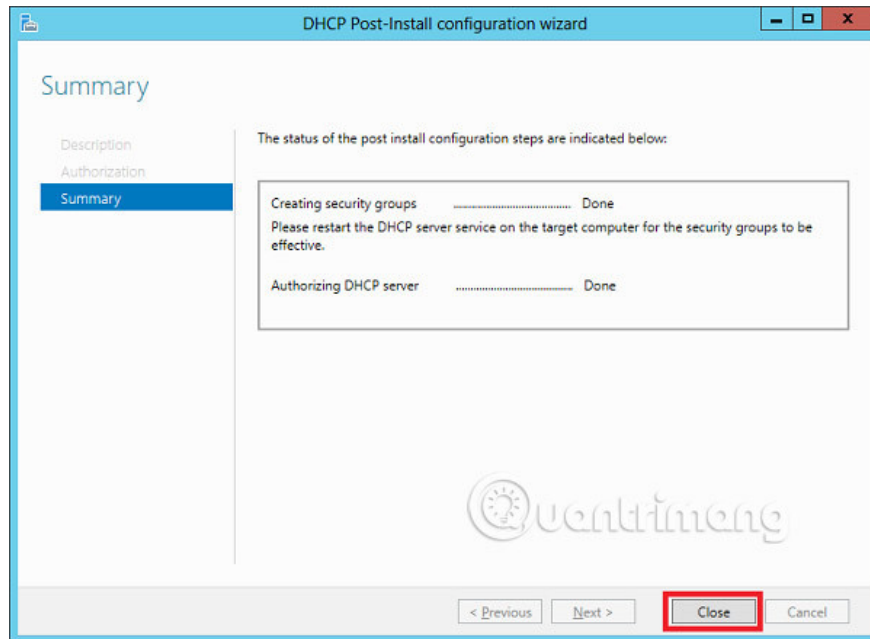
**Step 2** - Click Next .



**Step 3** - Select a domain user account with permission to create objects in **Net Services** container in the active directory or domain administrator account ? click **Next** .



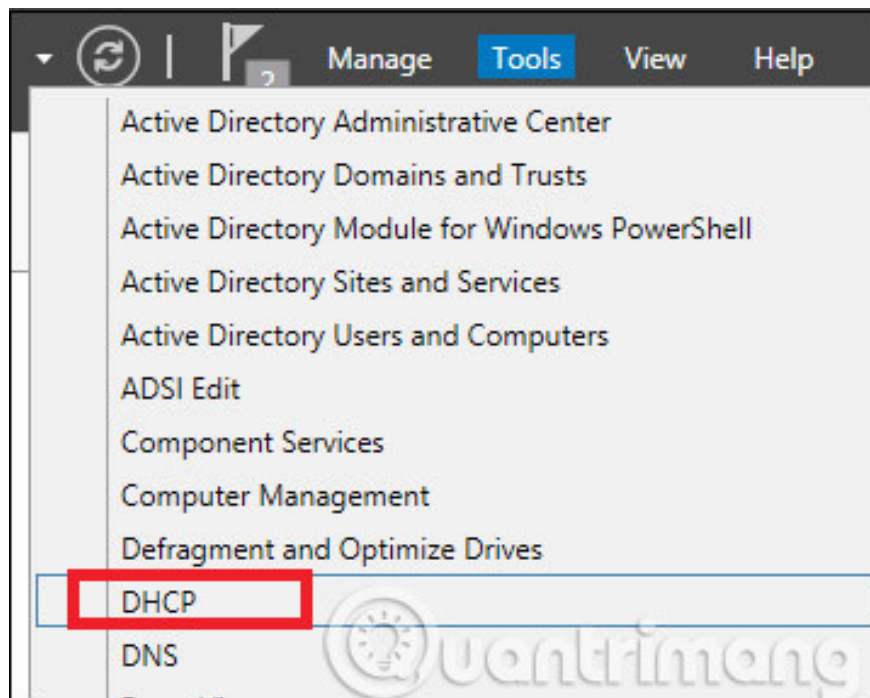
**Step 4** - Click **Close** .



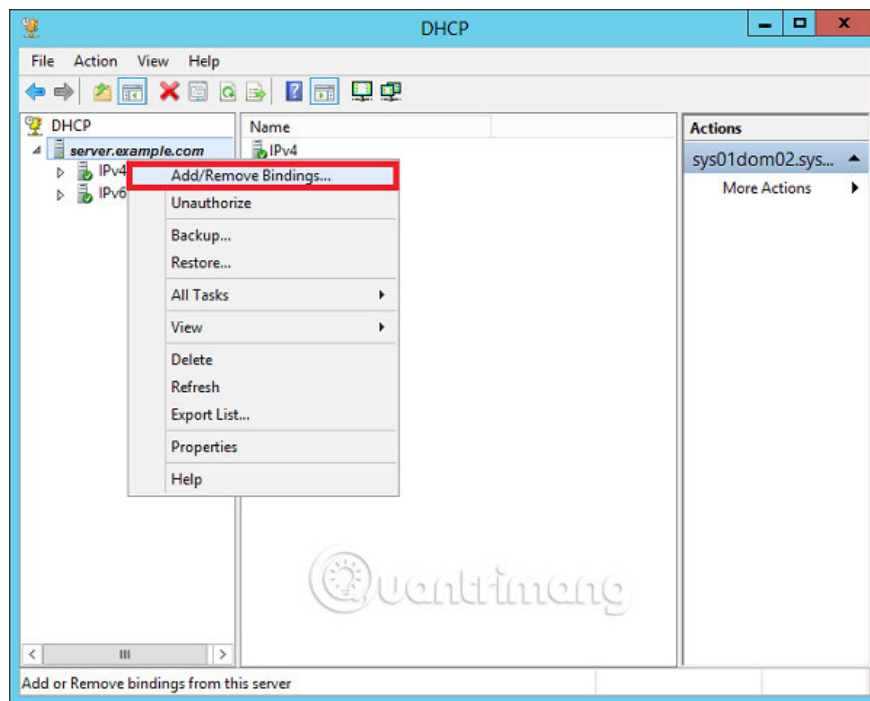
## Scope of DHCP deployment

Now you have to configure the service to make it useful for computers. To do this, you need to follow the steps below.

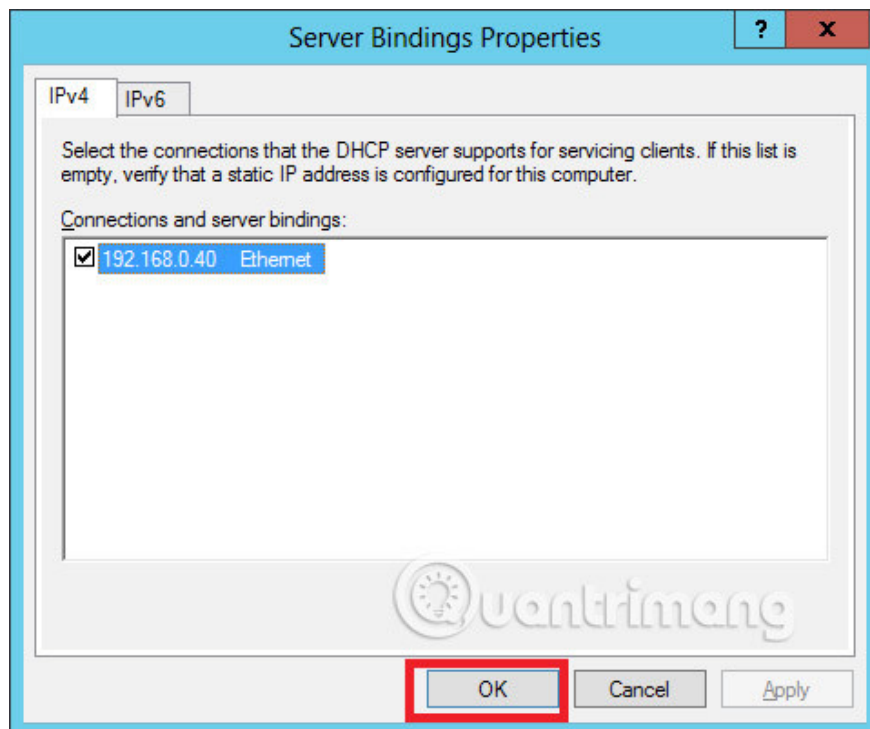
**Step 1 - Find Server Manager screen ? Tools ? DHCP screen .**



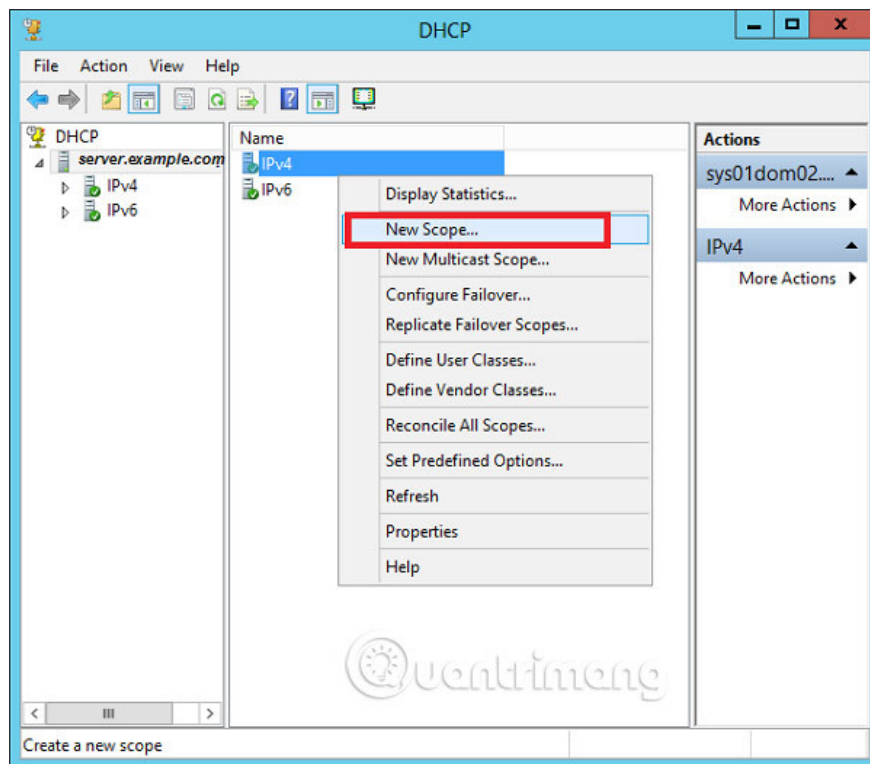
**Step 2 - Right-click DHCP Server ? then click ' Add / Remove Bindings . '**



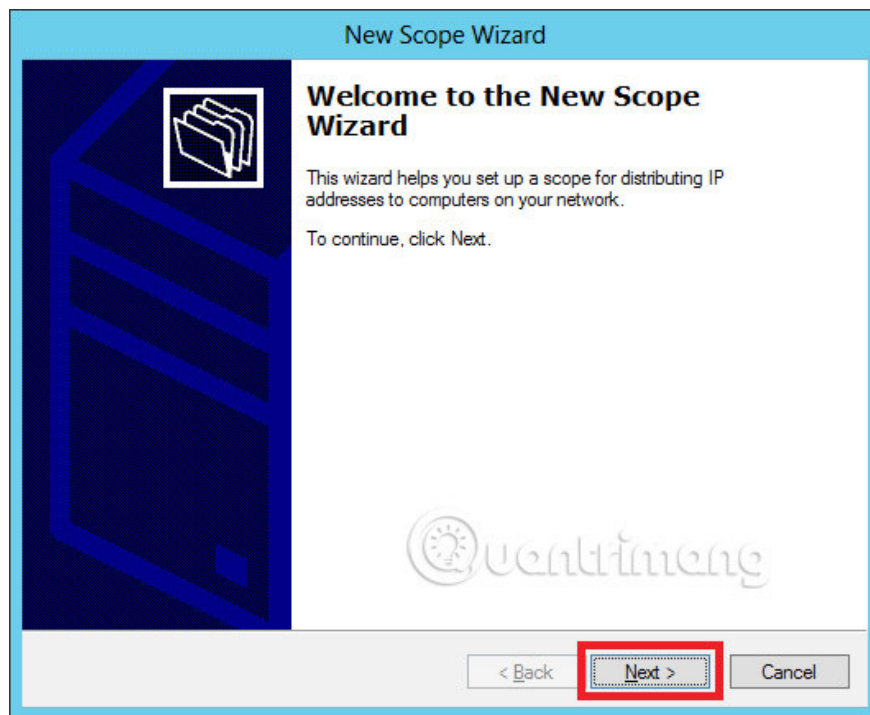
**Step 3** - Make sure the server's static IP address appears as shown in the following screen shot.



**Step 4** - Right click on **IPv4** ? Select ' **New Scope** '.



**Step 5** - Click Next .



**Step 6** - Enter **Scope Name** and description as shown in the following screenshot and then select **Next** .

**Scope Name**  
You have to provide an identifying scope name. You also have the option of providing a description.

Type a name and description for this scope. This information helps you quickly identify how the scope is to be used on your network.

Name:

Description:

< Back **Next >** Cancel

**Step 7** - Enter the **Start** and **End IP addresses** , **Subnet masks** , and default **Length ' 24 '** for C class subnets ? click **Next** .

**IP Address Range**  
You define the scope address range by identifying a set of consecutive IP addresses.

Configuration settings for DHCP Server  
Enter the range of addresses that the scope distributes.

Start IP address:

End IP address:

Configuration settings that propagate to DHCP Client

Length:

Subnet mask:

< Back **Next >** Cancel

**Step 8** - Enter your IP range in the exclusion list. If you have a device on the network that requires a static IP address, make sure that the excluded range of the **Start** and **End** ranges is specified earlier ? click **Next** .

**New Scope Wizard**

**Add Exclusions and Delay**

Exclusions are addresses or a range of addresses that are not distributed by the server. A delay is the time duration by which the server will delay the transmission of a DHCP OFFER message.

Type the IP address range that you want to exclude. If you want to exclude a single address, type an address in Start IP address only.

Start IP address:  End IP address:

Excluded address range:

Subnet delay in milli second:

**Step 9** - Enter the desired period for the specified IP or leave it default ? then click **Next** .

**New Scope Wizard**

**Lease Duration**

The lease duration specifies how long a client can use an IP address from this scope.

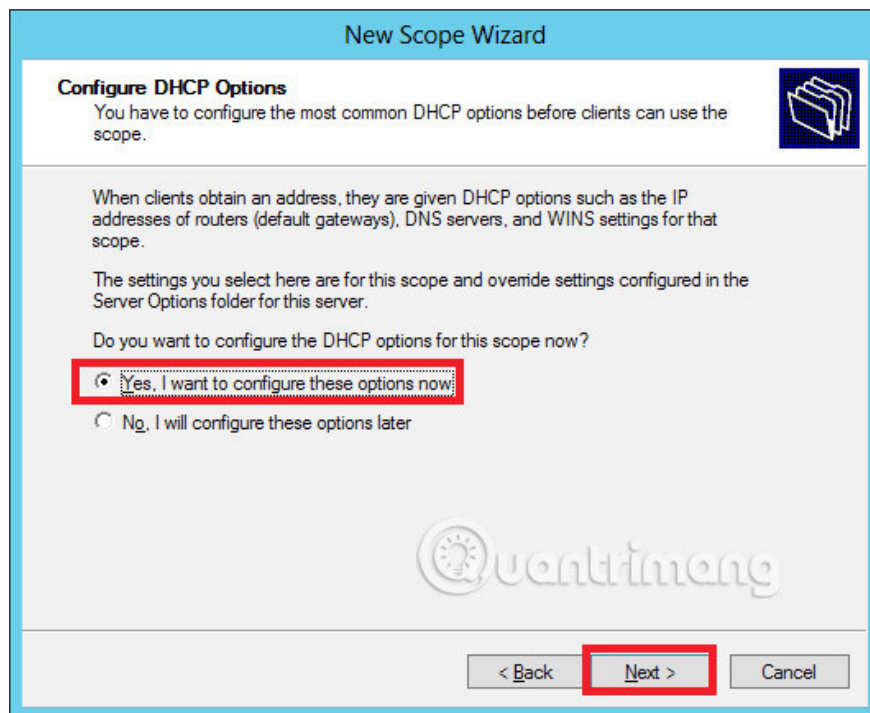
Lease durations should typically be equal to the average time the computer is connected to the same physical network. For mobile networks that consist mainly of portable computers or dial-up clients, shorter lease durations can be useful. Likewise, for a stable network that consists mainly of desktop computers at fixed locations, longer lease durations are more appropriate.

Set the duration for scope leases when distributed by this server.

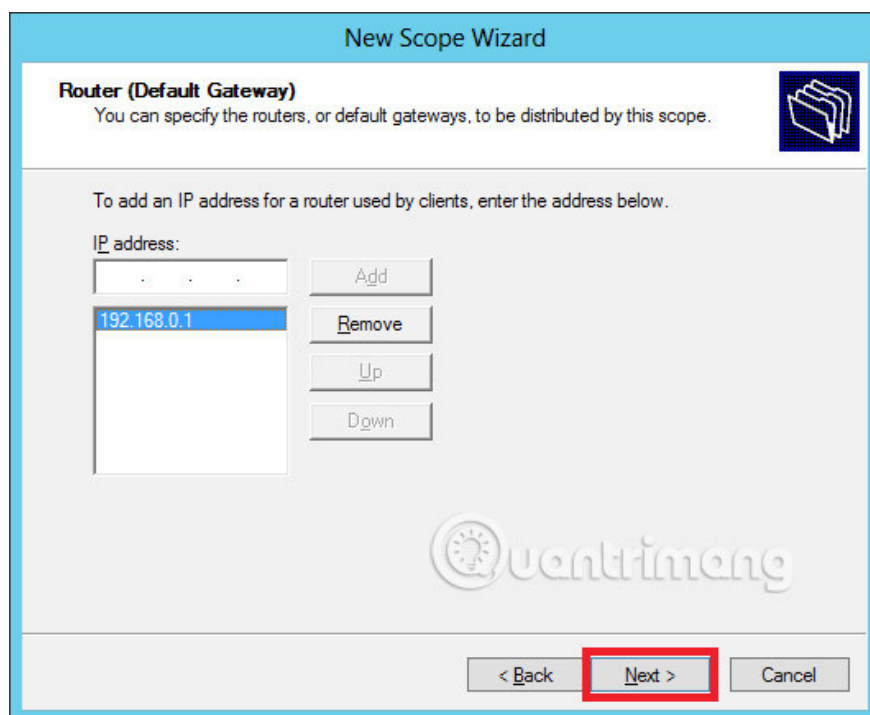
Limited to:

Days:  Hours:  Minutes:

**Step 10** - Select ' **Yes, I want to configure these options now to configure the DHCP options for the new scope** ' ? then click on **Next** .



**Step 11** - Enter the default port as your IP Router ? then click **Next** .



**Step 12** - Add **DNS IP** ? click **Next** (we can set Google DNS or if it is a Domain environment you can put DC IP there) ? then click **Next** .

### New Scope Wizard

**Domain Name and DNS Servers**  
 The Domain Name System (DNS) maps and translates domain names used by clients on your network.

You can specify the parent domain you want the client computers on your network to use for DNS name resolution.

Parent domain:

To configure scope clients to use DNS servers on your network, enter the IP addresses for those servers.

Server name:	<input type="text"/>	IP address:	<input type="text"/>	<input type="button" value="Add"/>
	<input type="button" value="Resolve"/>		8.8.8.8 8.8.4.4	<input type="button" value="Remove"/> <input type="button" value="Up"/> <input type="button" value="Down"/>

Quantimeng

**Step 13** - Specify your **WINS Server** if available ? and then click **Next** .

### New Scope Wizard

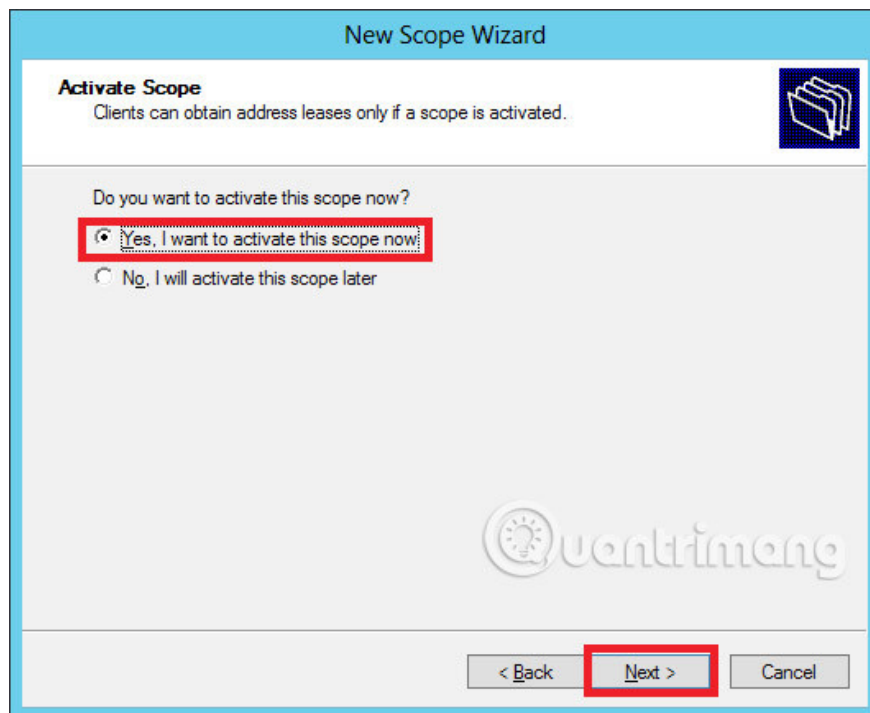
**WINS Servers**  
 Computers running Windows can use WINS servers to convert NetBIOS computer names to IP addresses.

Entering server IP addresses here enables Windows clients to query WINS before they use broadcasts to register and resolve NetBIOS names.

Server name:	<input type="text"/>	IP address:	<input type="text"/>	<input type="button" value="Add"/>
	<input type="button" value="Resolve"/>			<input type="button" value="Remove"/> <input type="button" value="Up"/> <input type="button" value="Down"/>

Quantimeng

**Step 14** - Select the ' **Yes, I want to activate this scope now** 'option to Activate range immediately ? select **Next** .



**Step 15 - Click Finish .**



Good luck!

See more:

1. Learn Resource Monitor tool in Windows Server 2012
2. How to create DC Accounts in Windows Server 2012
3. How to install Active Directory in Windows Server 2012

You finished reading the article "**Instructions for installing DHCP Role in Windows Server 2012**" edited by the [TipsMake](#) team. We hope this article has provided you with many useful tech tips and tricks. You can search for similar articles on tips and guides. Thank you for reading and for following us regularly.

---