

Instructions for installing Canon MF4720W multi-function laser printer

Versatile printers Canon MF4720W is a line of laser printers that is preferred by many users both at attractive prices and multi-function from printing, copying black and white text in A4 format as well as scanning text and connecting to computers via Wifi. It can print and copy speeds of 23 pages per minute with a resolution of 600 x 600 dpi. Let's follow up how to install this printer with your computer to use Wifi feature!

Multifunction Laser Printer Canon MF4720W is a series of printers that are used by many people by a combination of creative design and simplicity. Just one press will become the ideal companion for your family and small office using wireless connection to print and scan. If you are new and do not know how to install wifi printing feature on your computer, please refer to the article below!

How to install Canon MF4720W multi-function laser printer

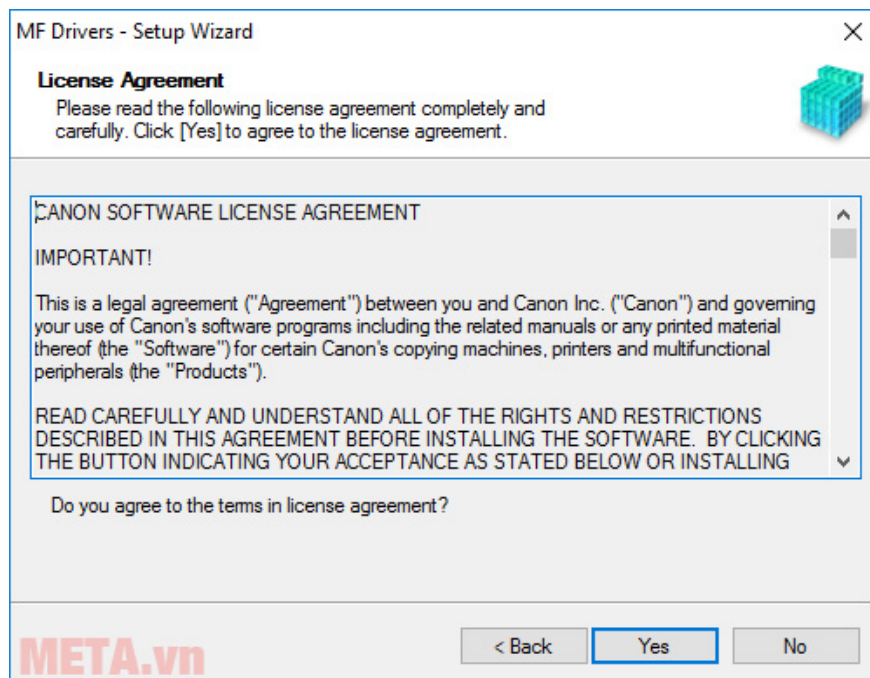
Canon MF4720W can use a cable connection between a computer and a printer or you can use a wifi connection to print wirelessly, and this second way is more user-friendly because many machines can print themselves. or scan directly from their computer. And below is how to install Canon MF4720W laser printer with wifi feature.

Before installing, use the pre-installed disc that came with the device or go to google to find **the Canon MF4720W printer driver** and download it (remember to choose the 32bit or 64bit operating system of the computer).

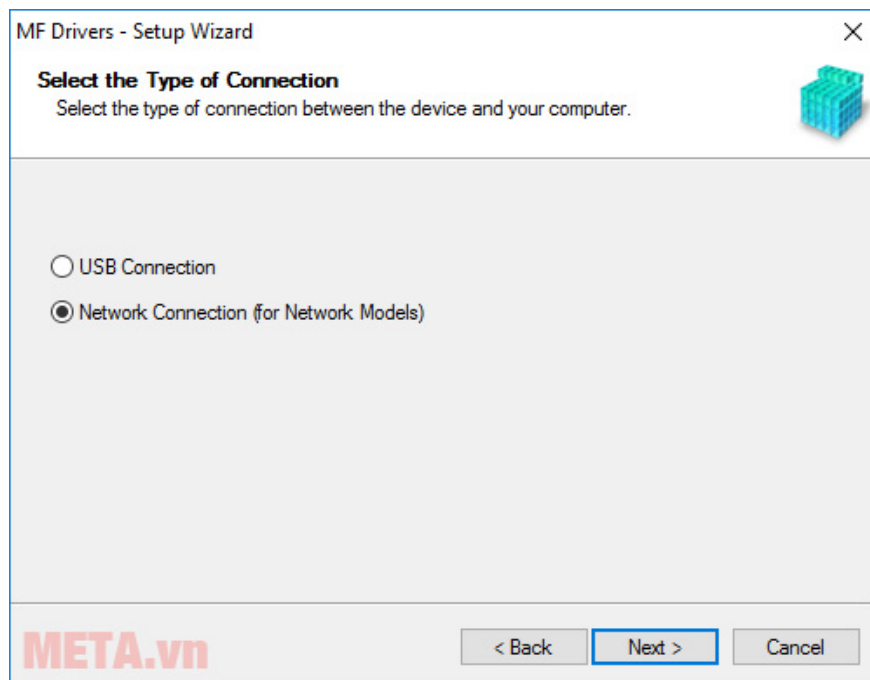
Step 1: Launch the installation file, click **Next** to step 2.



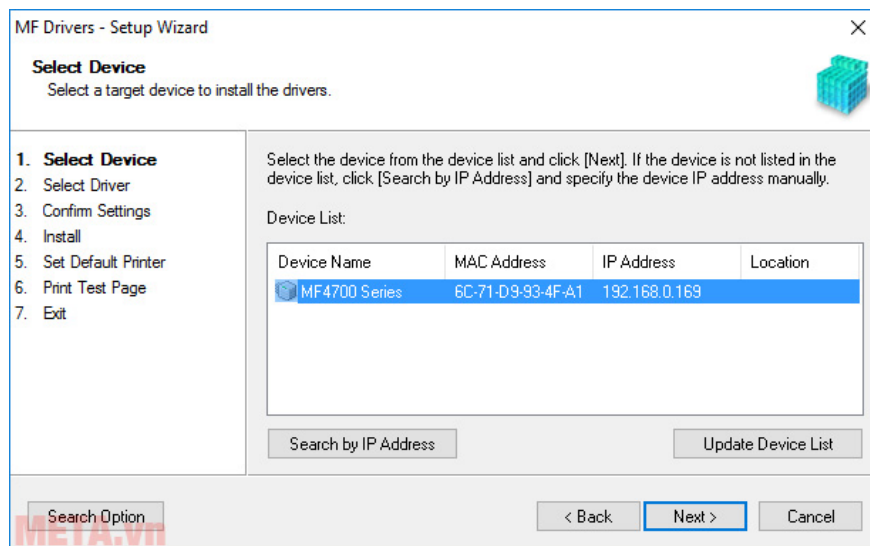
Step 2: Click the **Yes** button to agree to the terms set out and go to step 3.



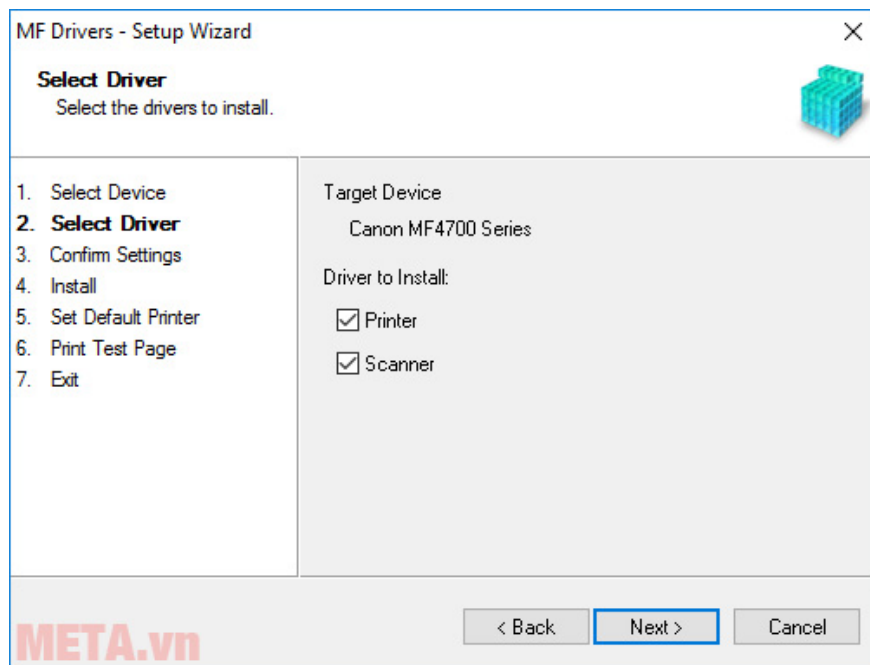
Step 3: In this step, you select Network Connection (if you want to install wifi printing feature), select USB Connection (if you want to set up printing feature via USB cable connection). Since the tutorial is to install wifi printing feature, I choose " **Network Connection** ", then click **Next** and move on to step 4.



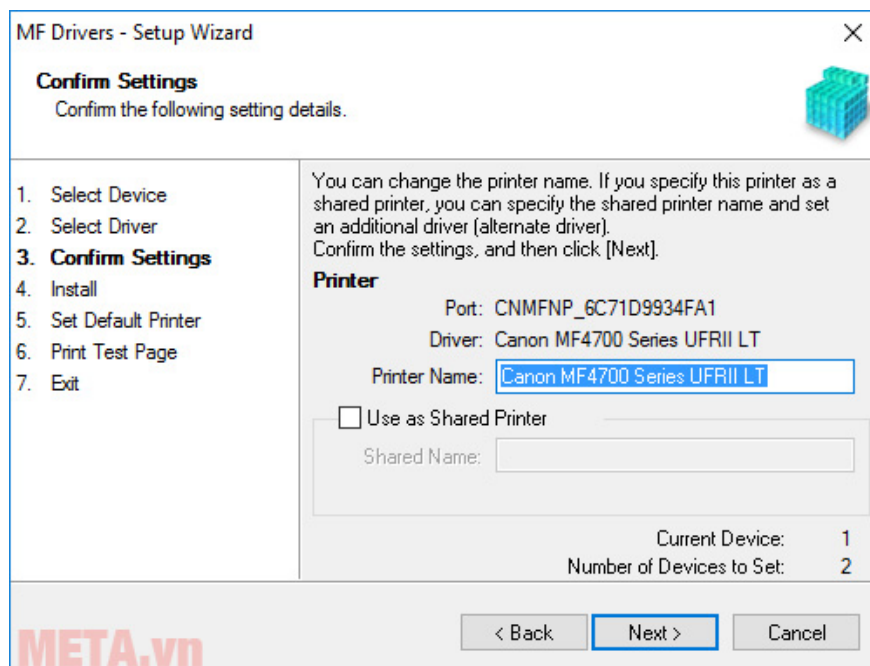
Step 4: Select the default as shown and click **Next** .



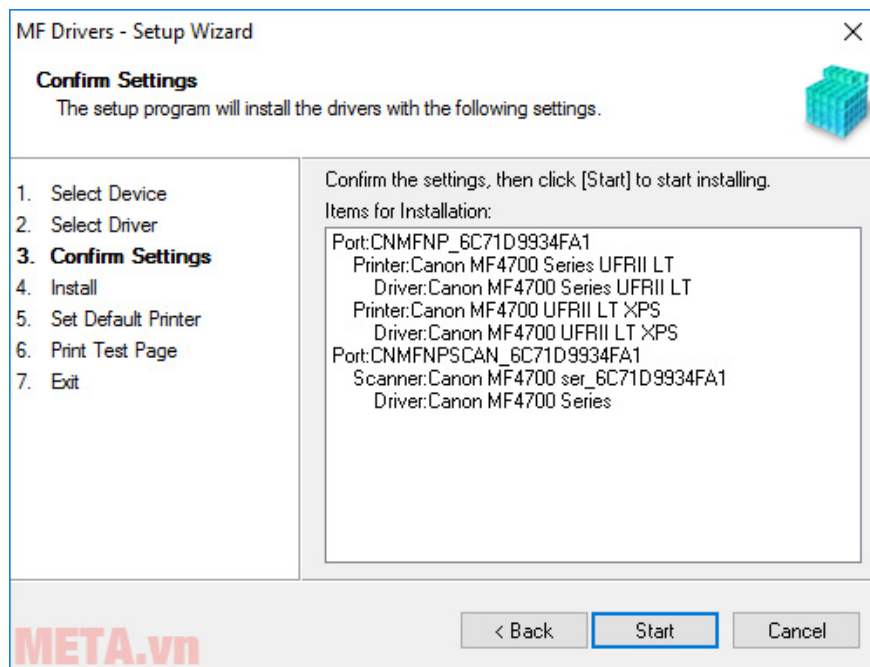
Step 5: You can store 1 of the 2 functions to install, if you want to use both the print and scan functions, select both, then click **Next** .



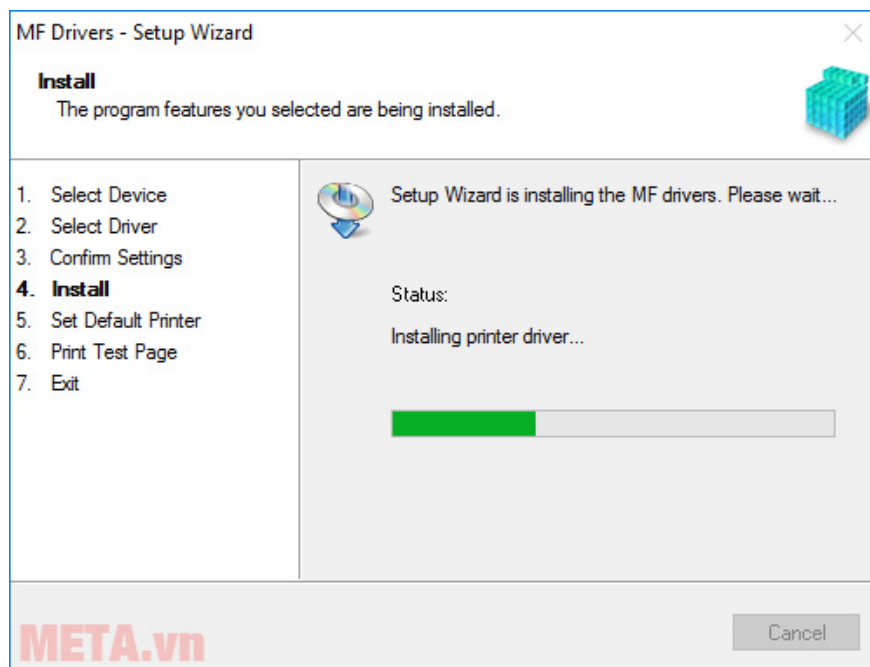
Step 6: Confirm the installation step, leave the default or rename the display to the printer, and then click Next.



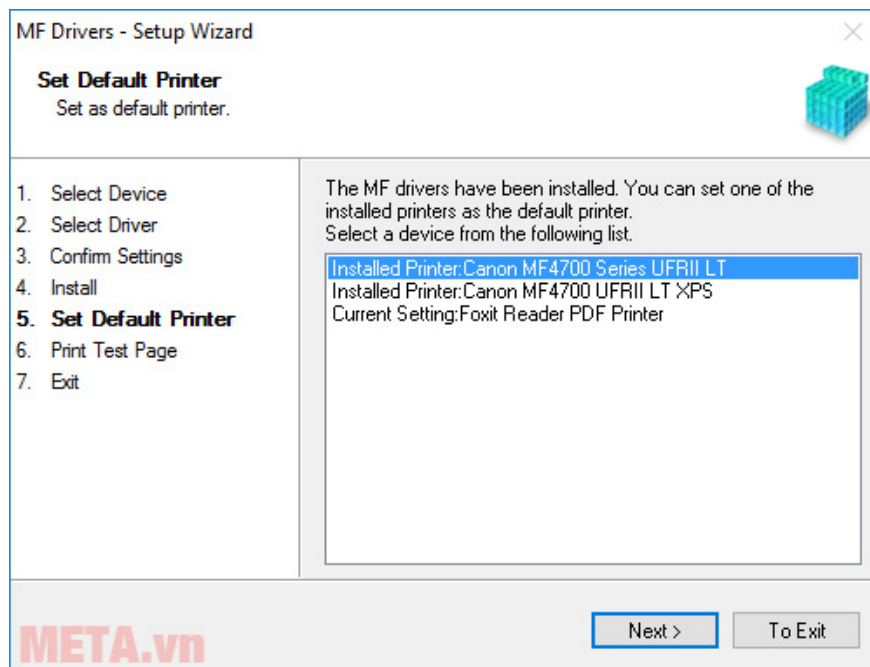
Step 7: Click the **Start** button to start the installation.



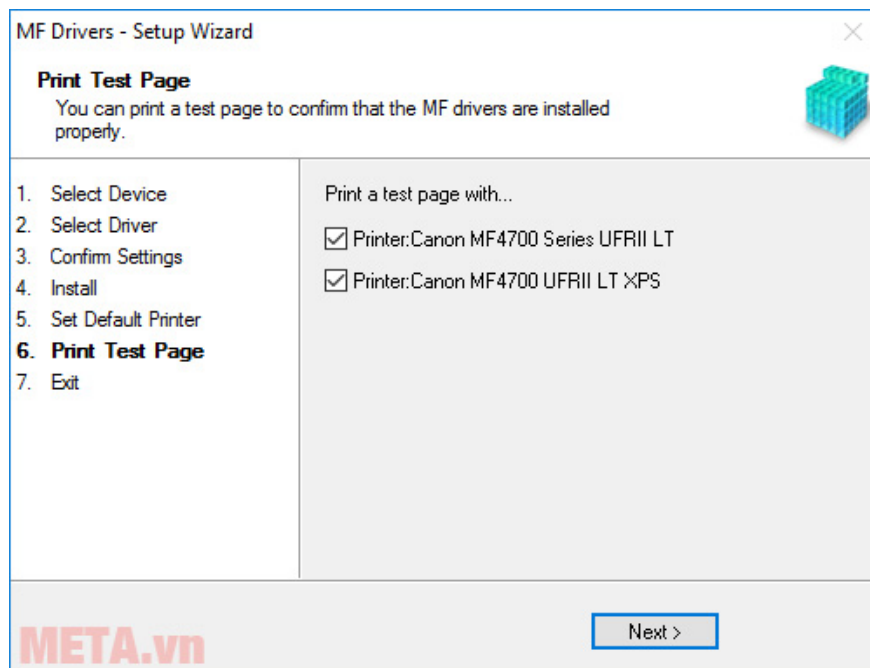
Step 8: Wait for the installation process to finish.



Step 9: Set the default print mode, select the first line, and then click **Next** .



Step 10: Print the test, after completing this step, if you leave the default 2 lines as shown, after clicking the Next button, the printer will automatically print 2 sheets for you. If you do not want to print the test, remove it and click the Next button to complete the installation process.



Step 11: Click the **Exit** button to finish the installation of the Canon MF4720W laser printer.



Too simple is not it, with this way of connecting and printing wifi, you can completely use to print and copy without the need for a USB cable, just choose the right network to connect with it. or simply scan documents. Good luck!

You finished reading the article "**Instructions for installing Canon MF4720W multi-function laser printer**" edited by the [TipsMake](#) team. We hope this article has provided you with many useful tech tips and tricks. You can search for similar articles on tips and guides. Thank you for reading and for following us regularly.