

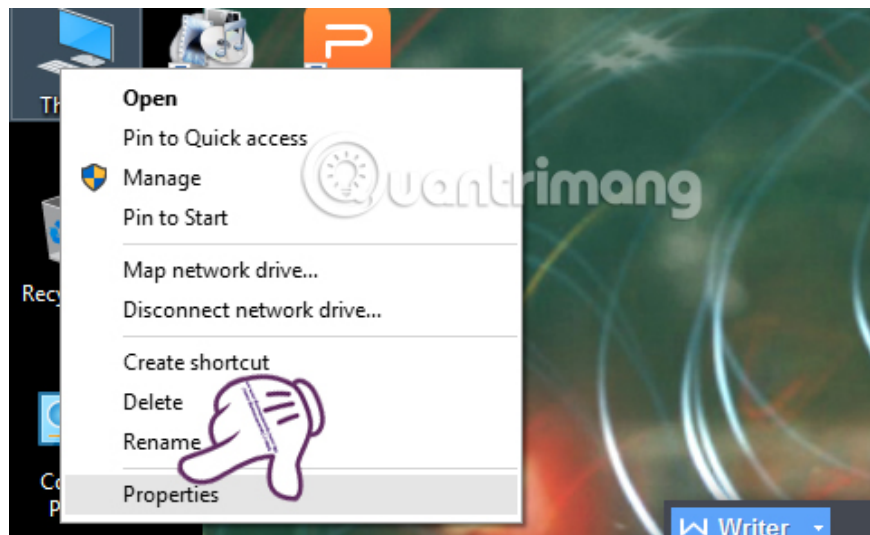
Instructions for installing Canon LBP 2900 printer on Windows

The operation of installing Canon LBP 2900 printer on a computer with different operating systems is relatively simple. Users only need to connect the printer to the computer and then connect to the Internet and the computer will automatically download the appropriate driver.

However, in case your computer has trouble connecting to the Internet, or having trouble downloading the driver, how should it be handled? In the following article, we will show you how to install Canon LBP 2900 printer on your computer, in case you do not automatically download the printer driver.

Step 1: First of all, you need to check whether the computer's operating status is stable or not. Then, start the printer and connect to the computer.

Step 2: At the interface on the computer, we click on **My Computer** and select **Properties** to check the computer operating system information is Windows 32-bit or Windows 64-bit.



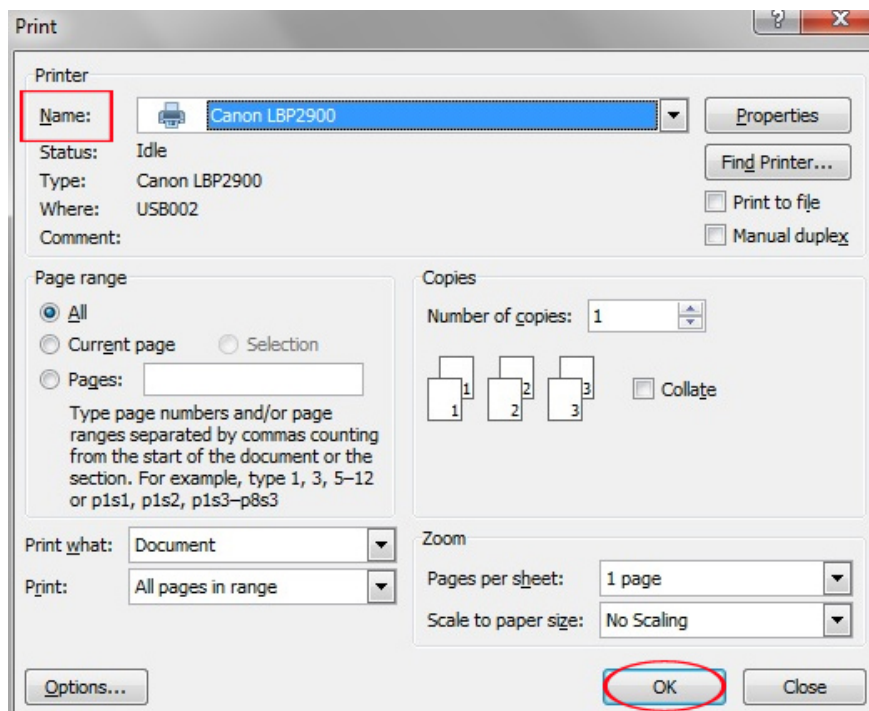
Step 3: Next, visit the link below to download the printer driver that is suitable for your computer's operating system.

[Download the driver for Canon LBP2900 printer here](#)

Link download is the driver for **32-bit Windows**, you look down the link will see the link to download the driver for **64-bit Windows** version, click on the link suitable for the computer operating system. This driver version is compatible with Windows XP, Windows 7 and Windows 8 / 8.1.

Step 4: After downloading the printer driver to your computer, double click on the **setup.exe** file to proceed with the installation and follow the instructions.

Finally, proceed to check if the printer is working. At the print interface, **Name Name** selects **Canon LBP 2900** and proceeds to print as usual.



So you have finished installing the Canon LBP 2900 printer on Windows, in case the computer does not automatically download the driver to the computer. If the case when we connect to the Internet on the computer and plug the printer USB cord into the computer that automatically installs the driver, we do not need to perform the above actions anymore.

I wish you all success!

You finished reading the article "**Instructions for installing Canon LBP 2900 printer on Windows**" edited by the [TipsMake](#) team. We hope this article has provided you with many useful tech tips and tricks. You can search for similar articles on tips and guides. Thank you for reading and for following us regularly.