

Instructions for installing Canon LBP 1210 printer on the computer

To be able to install Canon LBP 1210 printer on a computer, users need to have the printer driver and then we can proceed to install the printer on the computer as usual.

Installing a printer driver on your computer is the first step anyone has to take, when you want to connect a computer to print, such as Canon LBP 1210. After we have installed the device driver Print correctly with the computer operating system you are using, you can install the printer on Windows. In the following article, we will show you how to install Canon LBP 1210 printer on a computer.

Step 1:

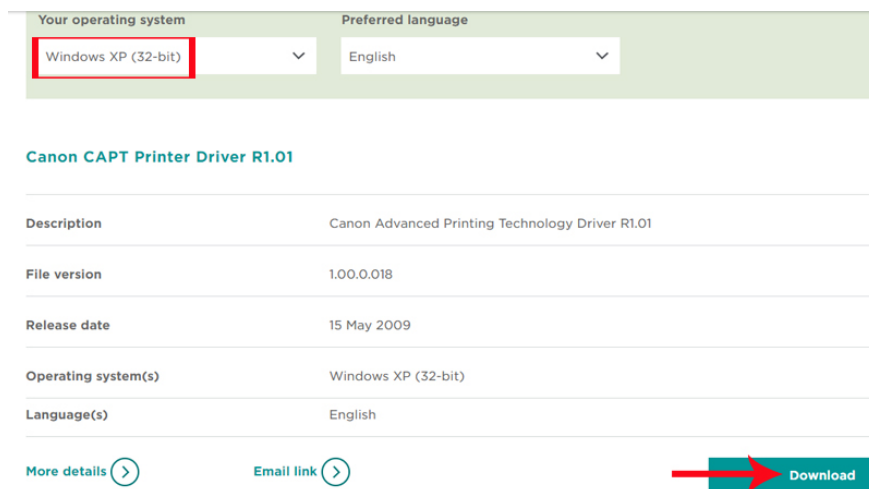
First of all, you download the driver for the printer suitable for the computer operating system. You access the link below to download the drive.

1. Download diver for Canon LBP1210 printer

At this interface, we go to the **Your operating system section** and select **Windows XP (32-bit)** or **Windows Vista (32-bit)** will appear a **Download** button to download the driver.

Note to users, if you want to install Canon LBP 1210 printer on 32-bit or Windows 8 32-bit Windows 7, you can download the printer link for Windows Vista to use.

Then proceed to extract and copy to C or D drive on the computer.

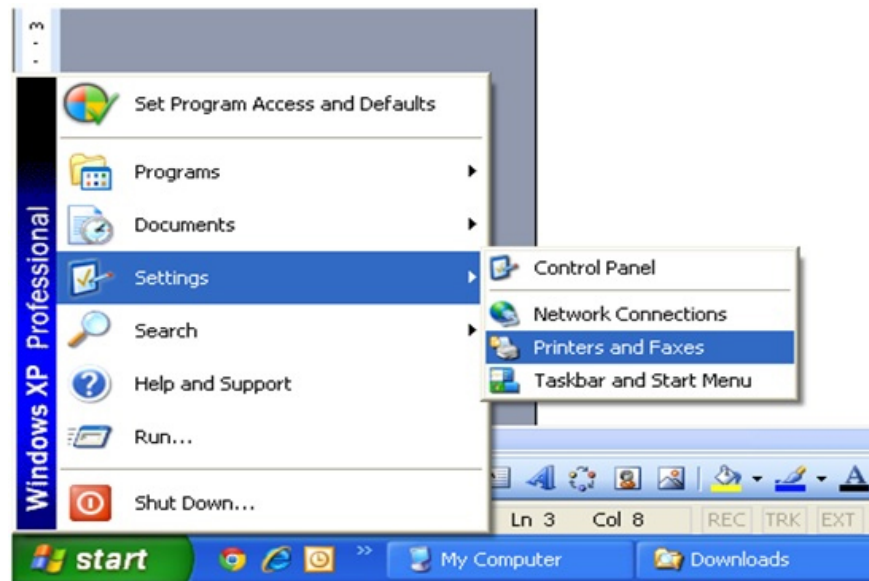


Step 2:

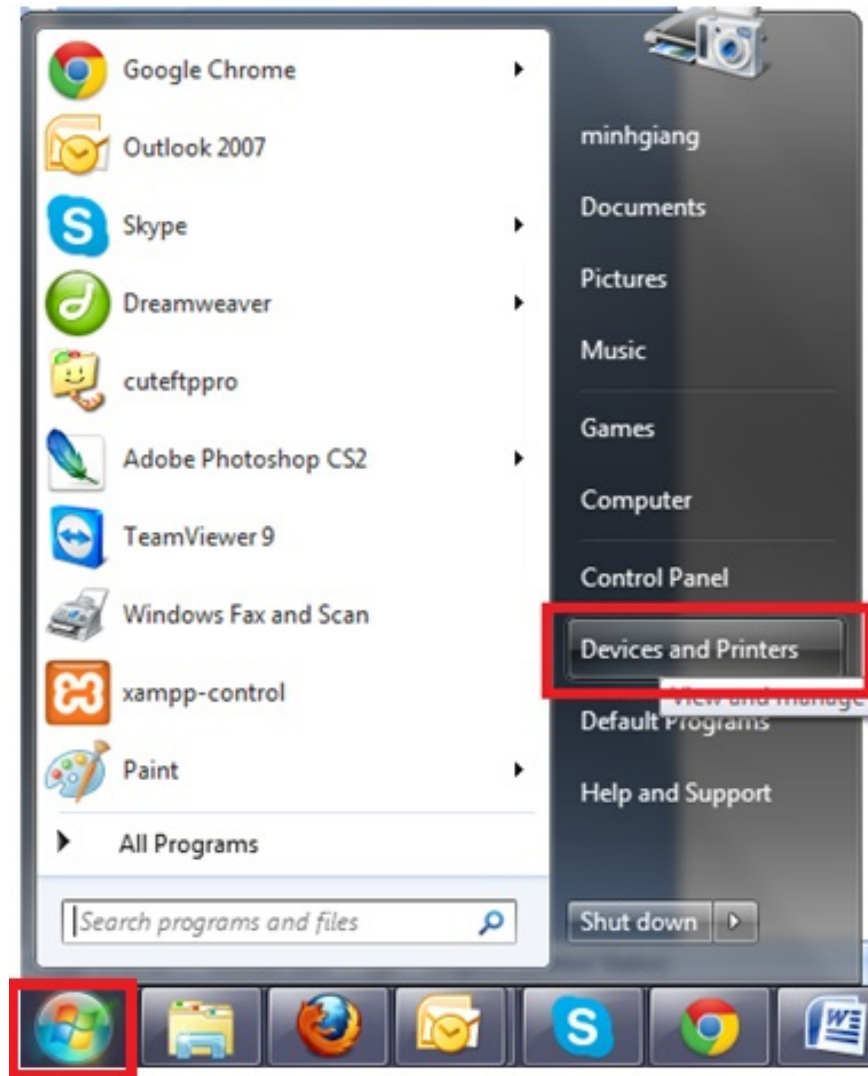
Next, we plug in the power and start the printer and check to make sure the printer is working properly. Then plug the cord to connect the printer to the computer.

Step 3:

Next, on a **Windows XP computer** , follow the **Start> Setting> Printer and Fax path** .

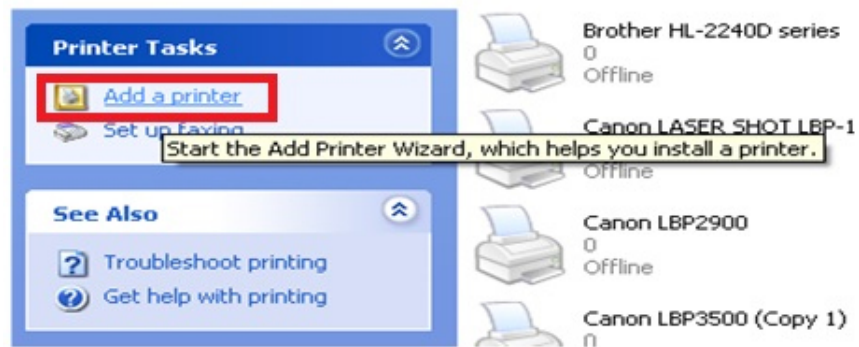


If on **Windows 7** , we click **Start> Setting> Printer and Fax** .



Step 4:

Then, click on the **Add printer** item in the computer interface. With Windows XP it will be on the left menu and Windows 7 will be above.



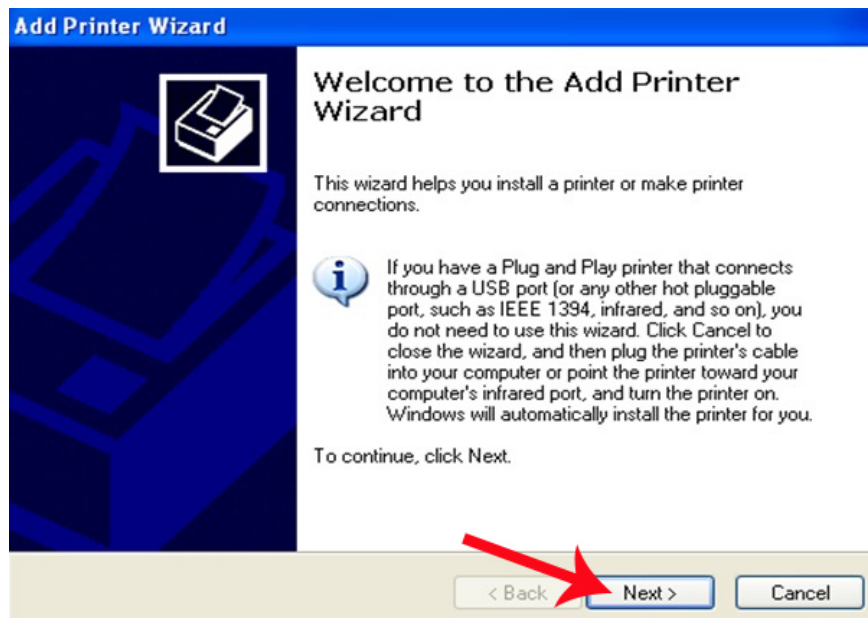
Window XP



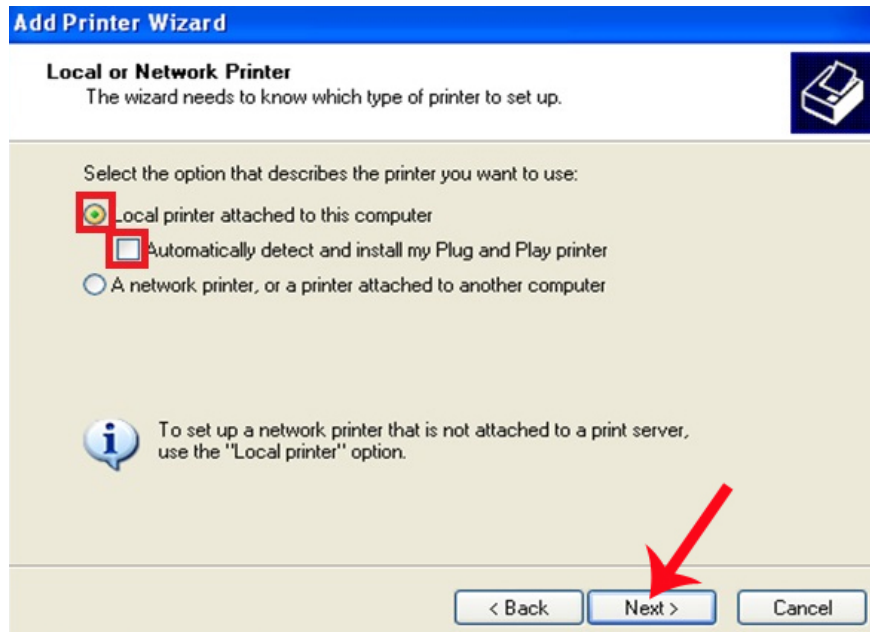
Windows 7

Step 5:

The **Add Printer Wizard** window interface appears. Click **Next** to continue.

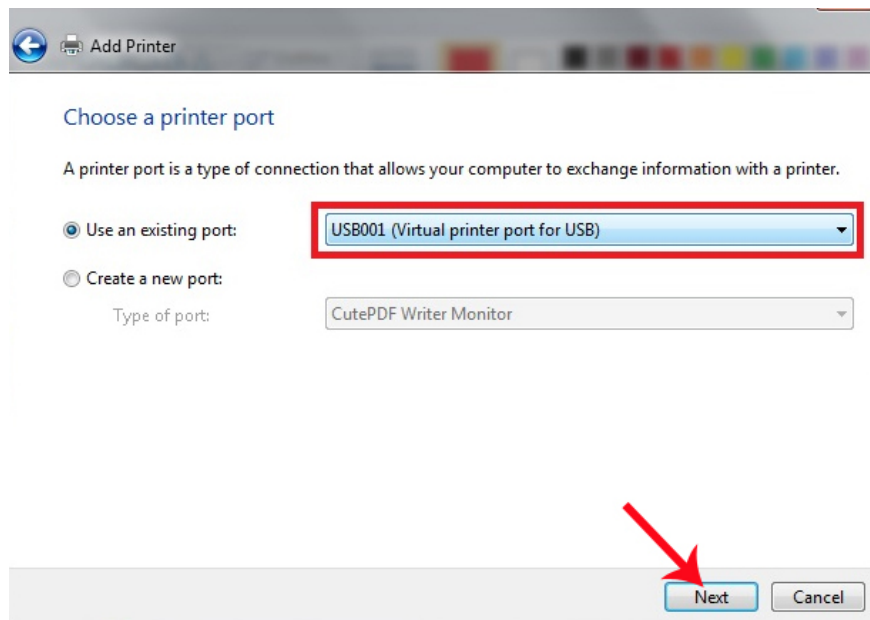


Then click on the **Local printer attached to this computer** option and **uncheck the Automatically detect and install my Plug and Play printer** option and click **Next**.



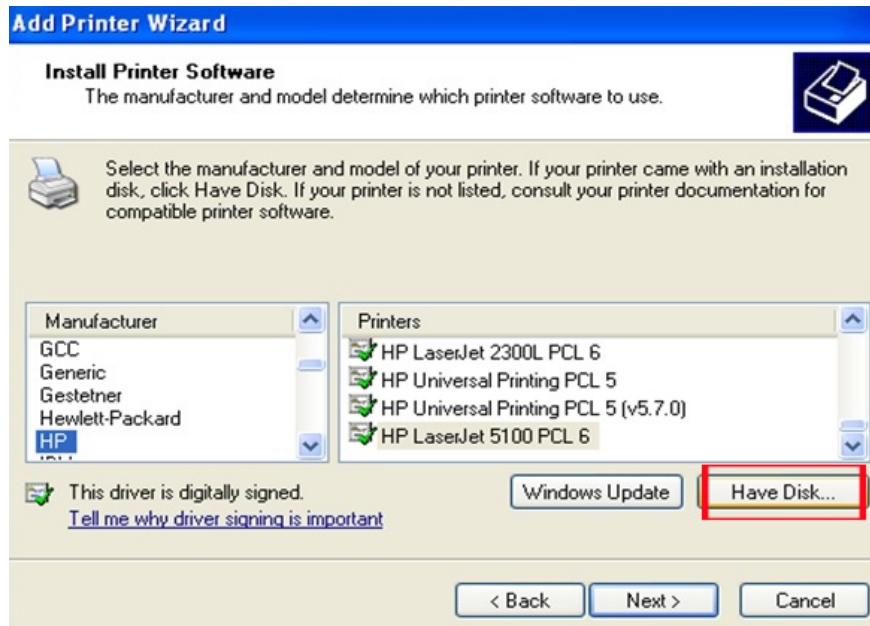
Step 6:

At this interface, select the option **User an existing port** and select **USB001 (Virtual printer port for USB)** and click **Next** .



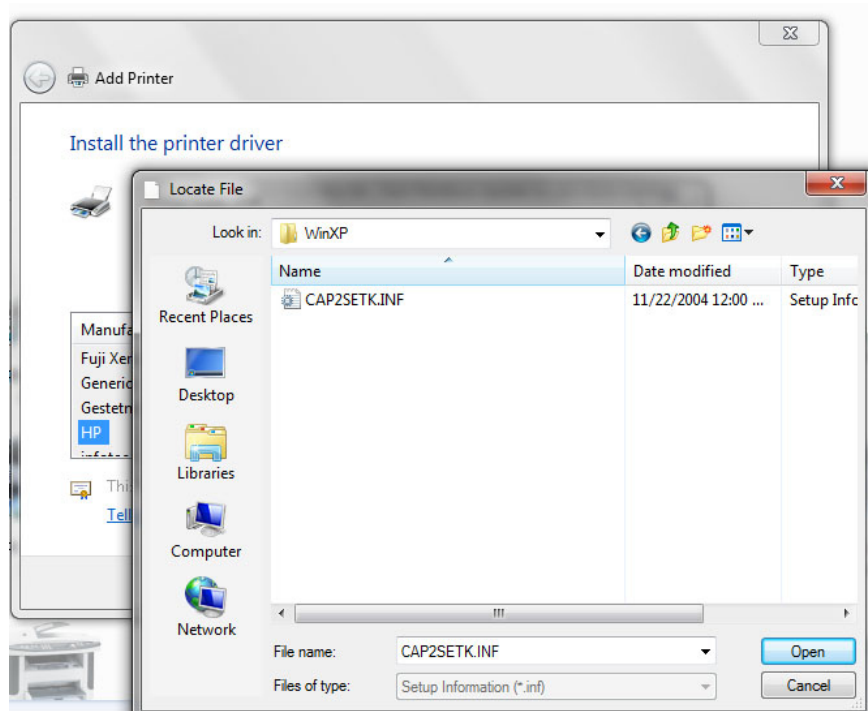
Step 7:

Next we click the **Have Disk** button below.

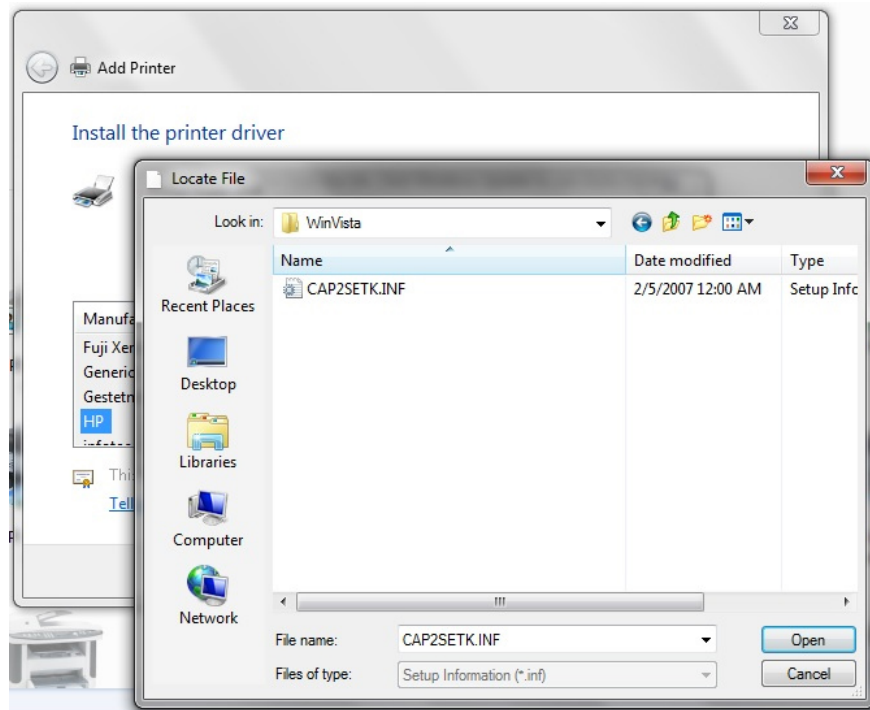


Step 8:

In this step, if with **Windows XP computer** , we will find **the folder to install Canon LBP 1210** on the computer and then select **WinXP** .

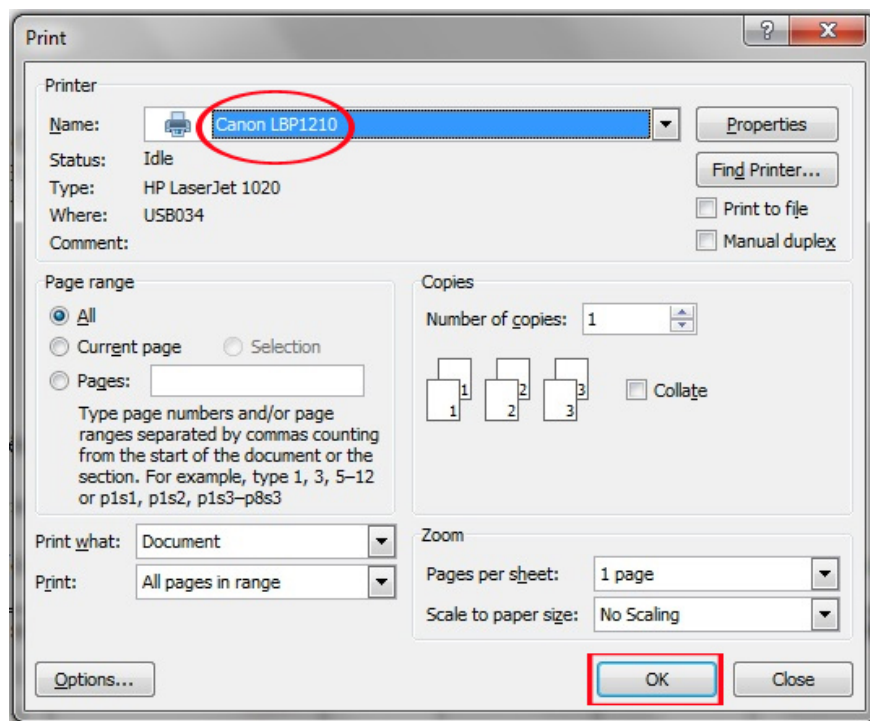


For **Windows 7** computers, select **Canon 1210 installer folder** and select **WinVista** .



Step 9:

You proceed with the test print operation. Item Name select Canon LBP121 printer and click **OK** to print.



Above are the steps to install Canon LBP121 printer on Windows computer. Please check and download the correct printer driver for Windows operating system to successfully install the printer.

Refer to the following articles:

1. Instructions for installing the printer in Windows 8
1. Common printer errors and how to fix them
1. Tips for sharing printers in the network

I wish you all success!

You finished reading the article "**Instructions for installing Canon LBP 1210 printer on the computer**" edited by the [TipsMake](#) team. We hope this article has provided you with many useful tech tips and tricks. You can search for similar articles on tips and guides. Thank you for reading and for following us regularly.
