

Instructions for installing and using LogMeIn Hamachi access computers anywhere

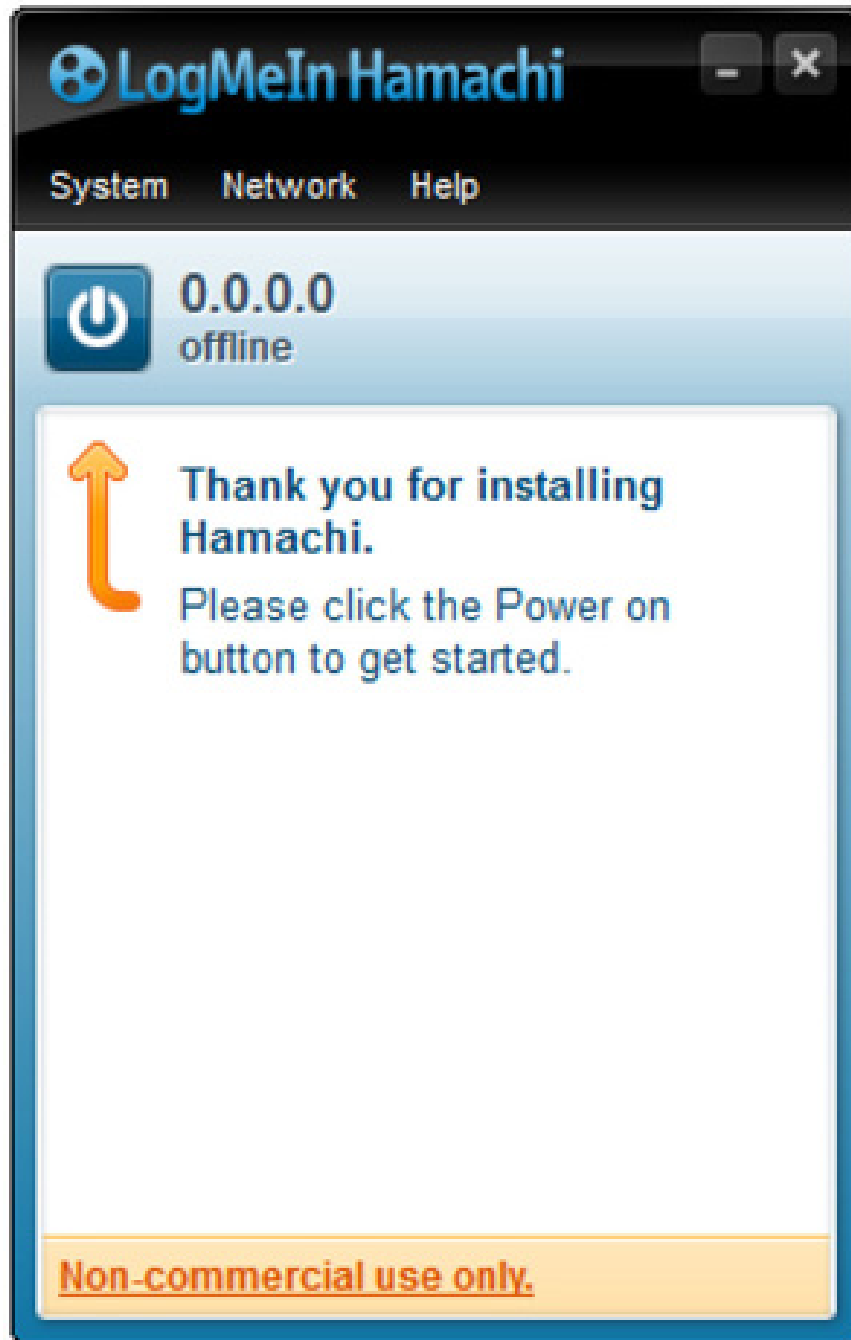
LogMeIn Hamachi is a virtual private network (VPN - Virtual Private Network), allowing users to share resources and play some games over the LAN. Just 2 computers with LogMeIn Hamachi installed, you can share resources ... for each other.

Hamachi is a private virtual network (VPN - **Virtual Private Network**) on the Internet. Each computer connected to the **Hamachi** network for the first time will be assigned an **ID** . The server will be responsible for mediating 'navigation' for clients connected to each other, forming a **virtual LAN** over the Internet.

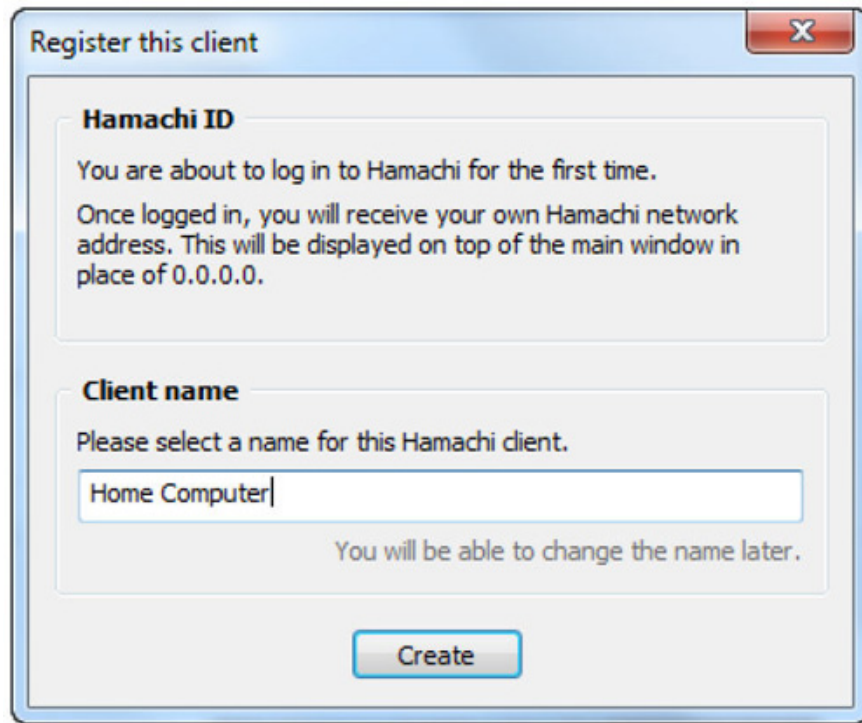
Once connected, clients do not need any further support from the **Hamachi** server.

Download LogMeIn Hamachi application to your device and install it here.

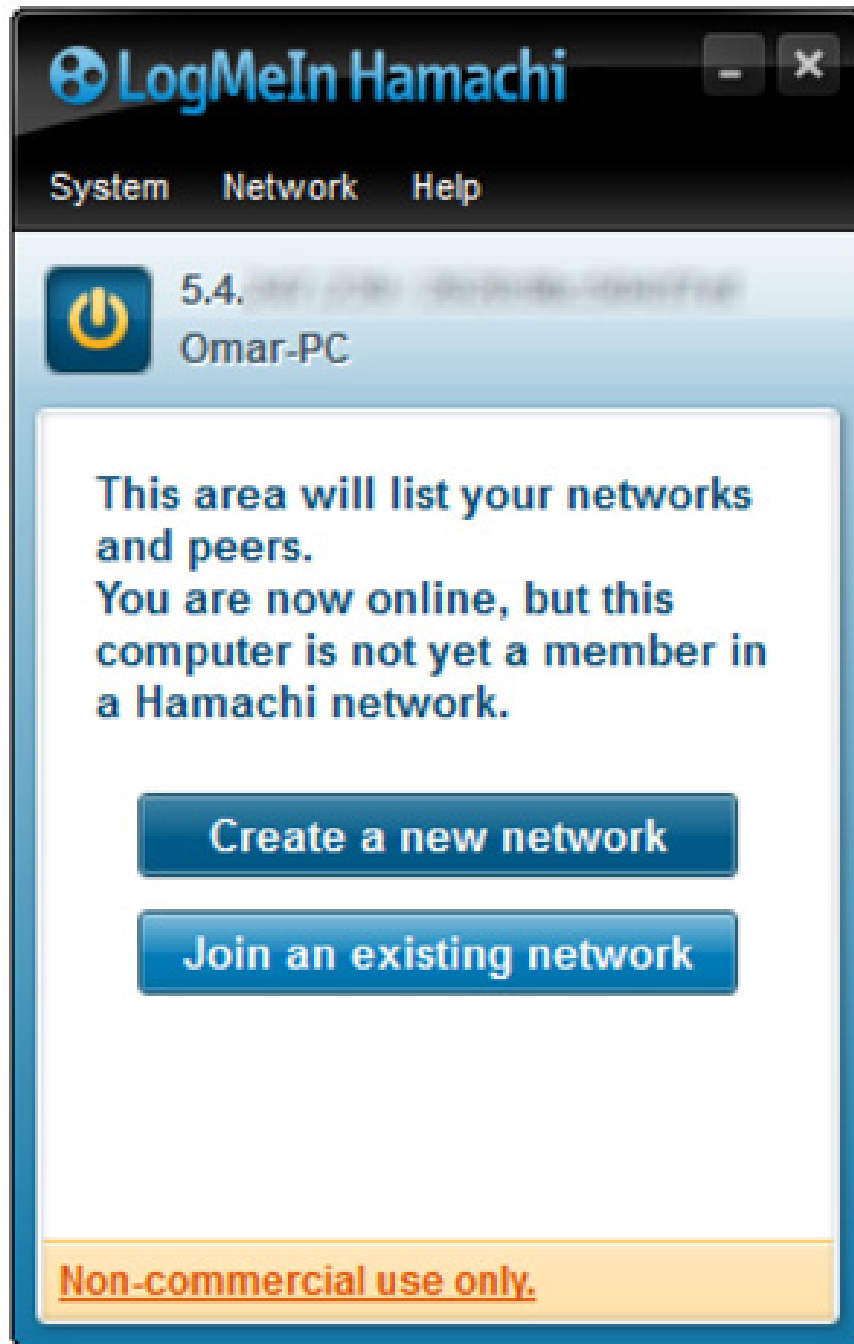
After downloading the device and installing successfully on the screen, a command will be clicked on the **Power On** button (this button is the same as the power button).



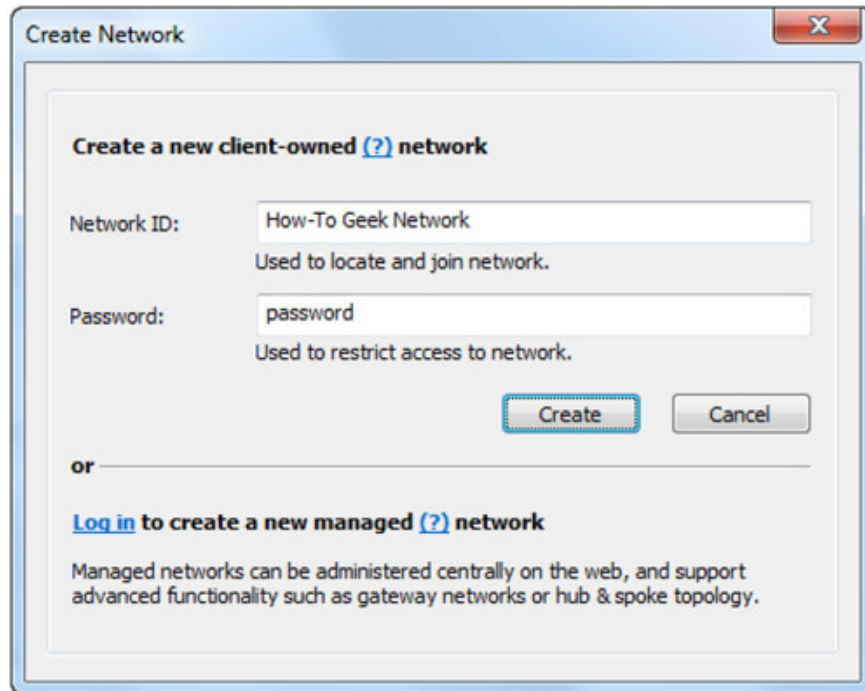
A popup window appears, your task is to enter your computer's line name and click **Create** .



Now **Hamachi** will start and run. Click **Create a new network** to create a new virtual network.



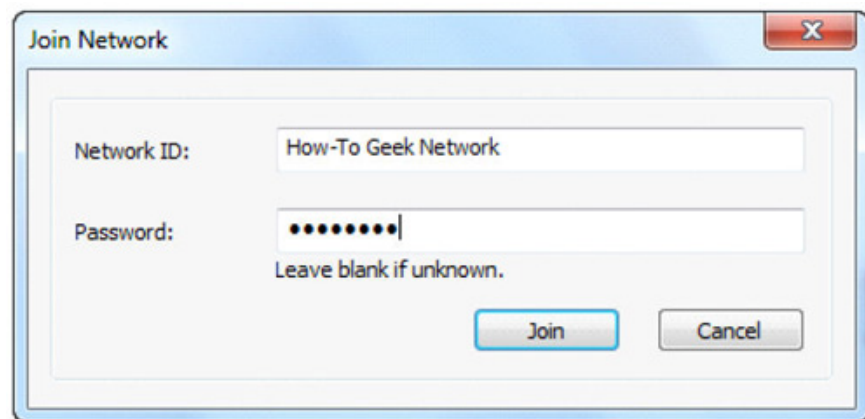
A new pop-up window appears asking you to enter **Network ID** and password.



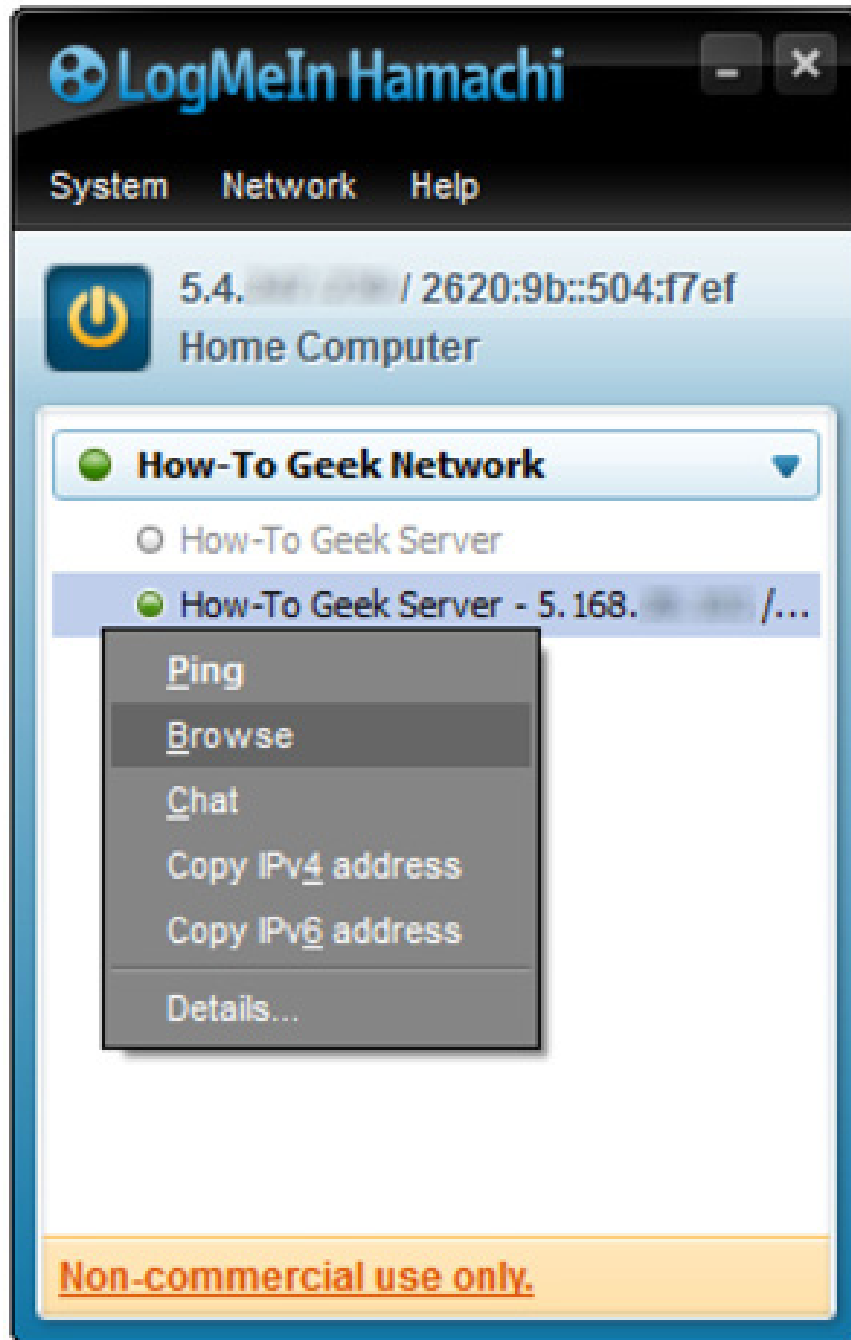
After you have entered **Network ID** and password, click **Create (create)**, a new virtual network will be created.

More reference: Access computers using DNS and DD-WRT

Your next task is to get another computer and install Hamachi. However, this time, you choose to go to **Menu Network** then select **Join an existing network** (connecting to the network is currently available). You will be asked to enter the **Network ID** and password you set up earlier. After entering, select **Join** and wait a while.

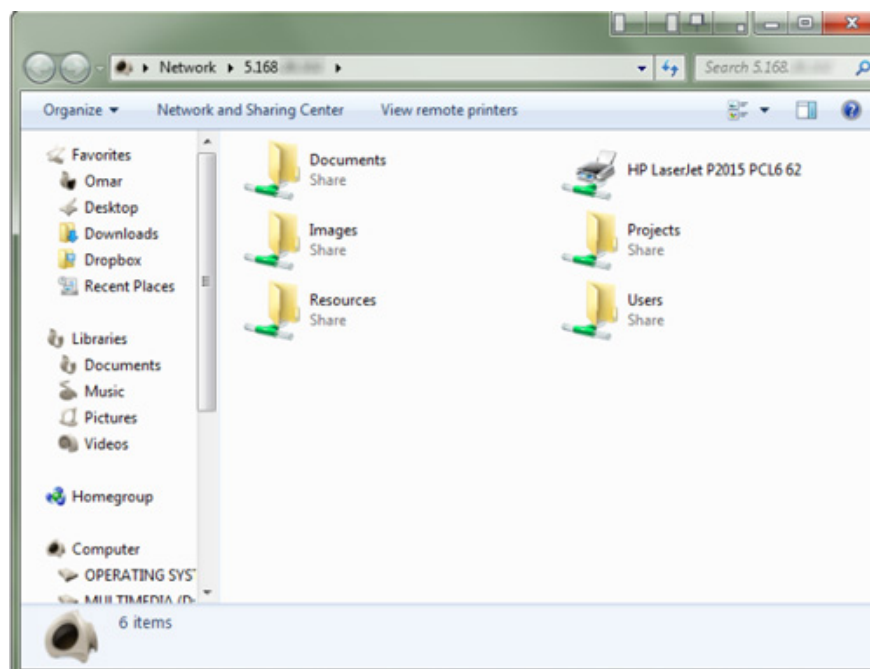


So you are connected to your own **VPN** . You can access all connected computers. Just right-click the computer you want to access and select **Browse**.



If you want others to connect to your **VPN** , send them **Network ID** and password. Note that their computers must also install **Hamachi** .

When both computers have **LogMeIn Hamachi** settings, you can share files and folders for each other.



Good luck!

You finished reading the article "**Instructions for installing and using LogMeIn Hamachi access computers anywhere**" edited by the [TipsMake](#) team. We hope this article has provided you with many useful tech tips and tricks. You can search for similar articles on tips and guides. Thank you for reading and for following us regularly.