

Instructions for installing and using Google Drive on all devices

Google Drive is a popular cloud storage tool that helps you sync and share data easily. If you don't know how to install and use it properly, this article will guide you in detail.

Want to install Google Drive but don't know where to start? Check out how to download, install, and use Google Drive effectively on your computer and phone with TipsMake.

HOW TO USE GOOGLE DRIVE

1. On Android phone, iPhone

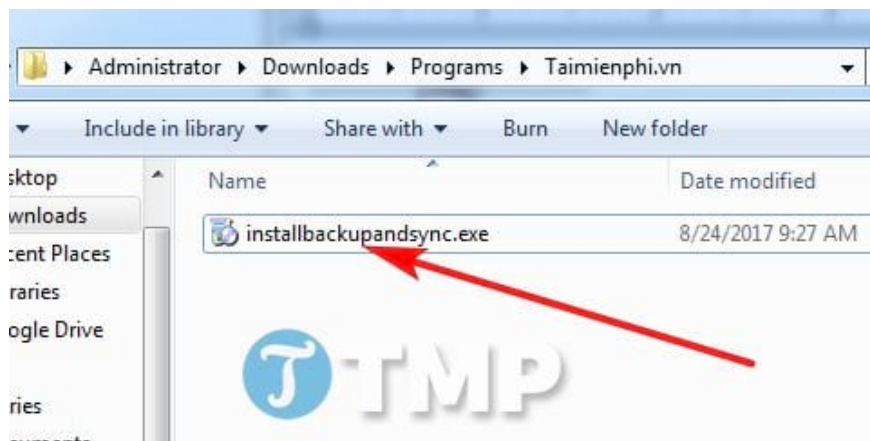
First, you **need to download the application** to your device, then create a Gmail account to log in and use it.

Details on how to do it here: [How to Use Google Drive on Your Phone.](#)

2. On computer

Step 1: Download **Google Drive** to your computer.

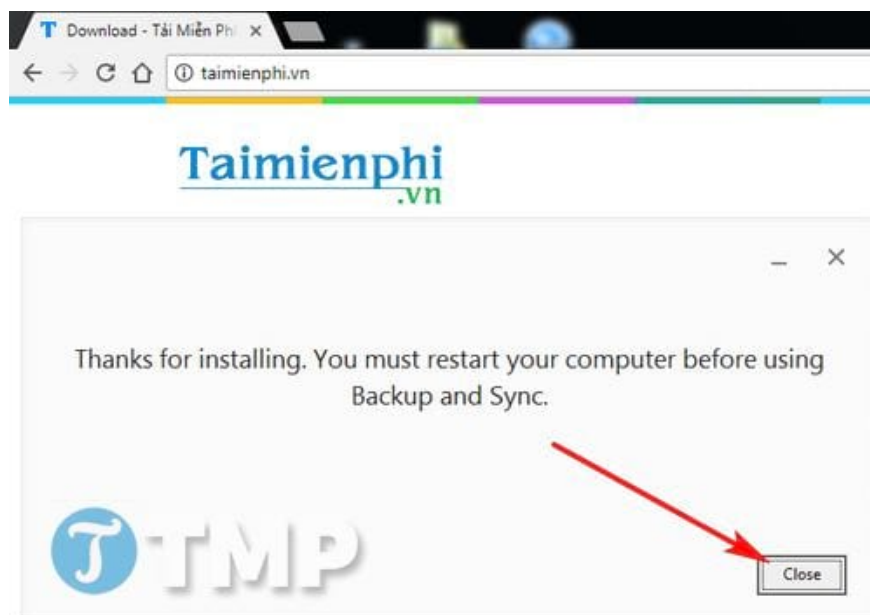
Step 2: Click on the installation file you just downloaded



Step 3: Wait a few minutes for the system to process.

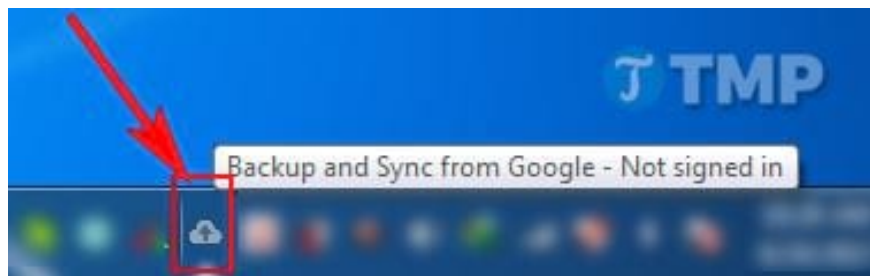
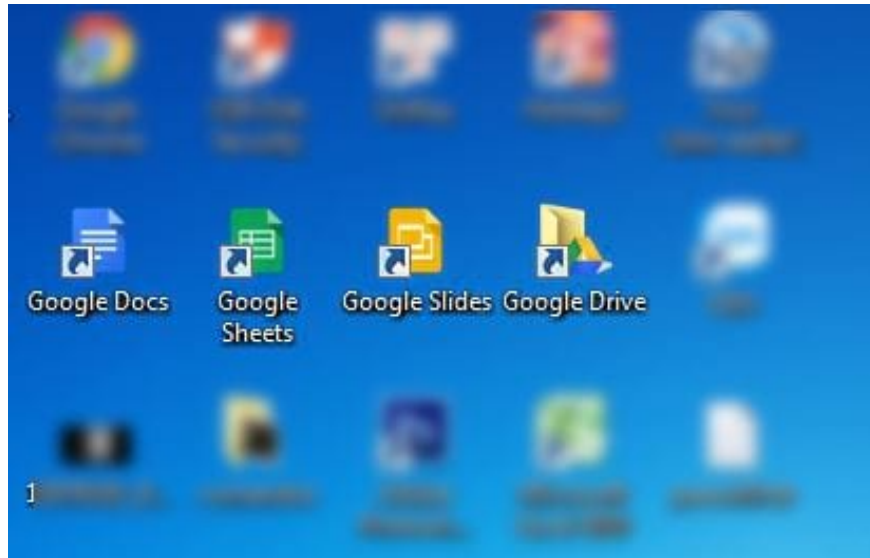


Step 4: Once done, you will have to **restart** your computer to start using it. Click **Close** to close the installer.



Use Google Drive to store and synchronize data

Step 1: You will see Google Icons on your **Desktop** screen. As well as the **Icon** at the **bottom** of the **Quick Bar**.



Step 2: You will need to log in again to sync all data.



Step 3: Click **Got it** to continue.

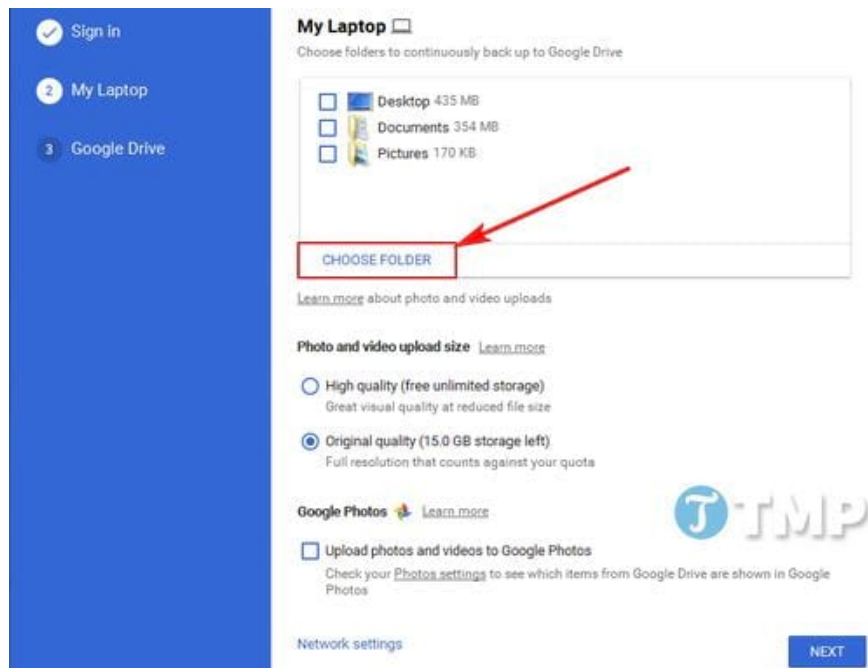


Choose folders from your computer to continuously back up to Google Drive

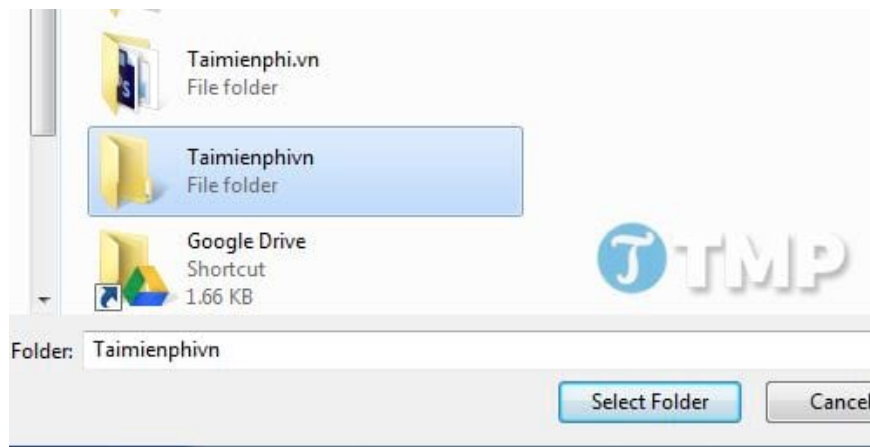
Find them in the "Computers" tab at drive.google.com



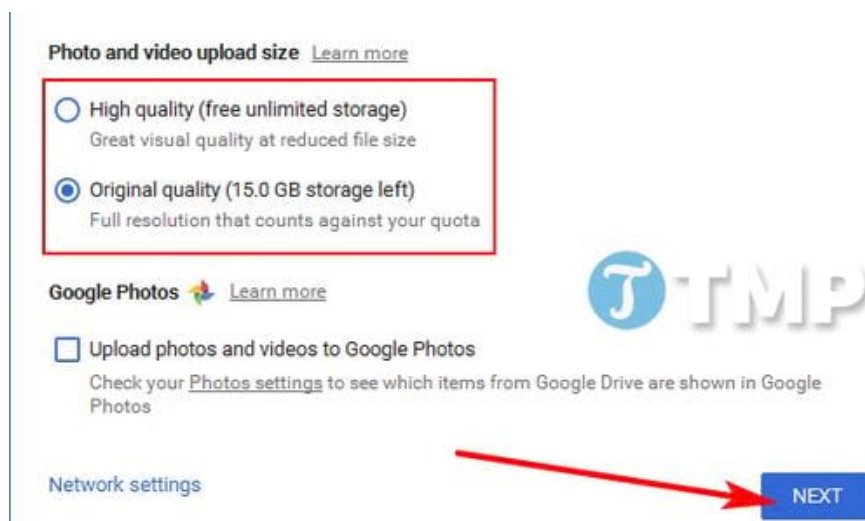
Step 4: Click **Choose Folder** to select the backup and data synchronization folder.



Step 5: Select Folder and click **Select Folder**



Step 6: You can choose the desired capacity you want to use. You have 15Gb of free capacity, if you want to use more, choose **High quality**



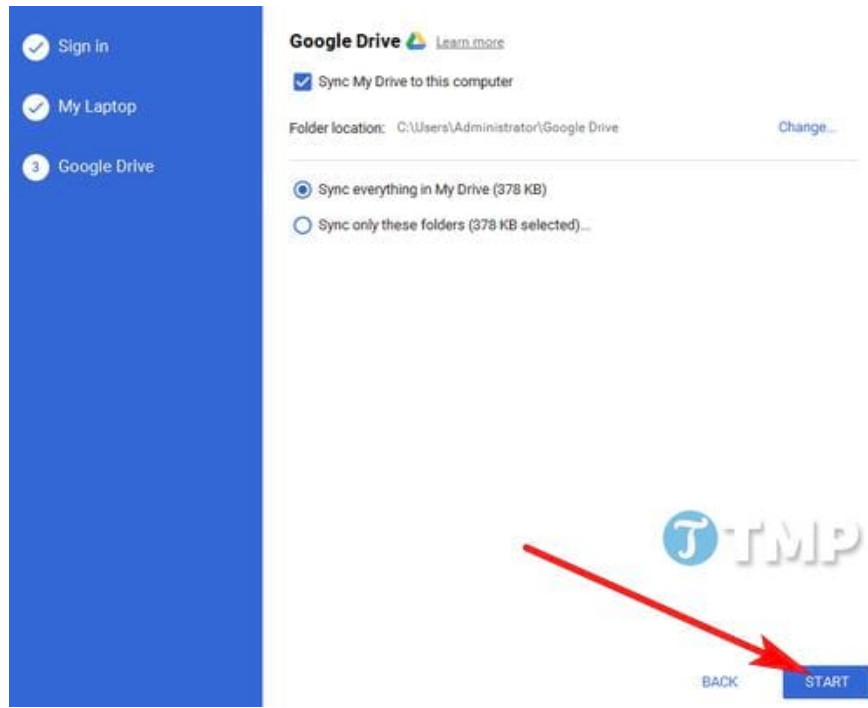
Step 7: Click **Got it** to continue

Sync files from My Drive to a folder on this computer

Access the Google Drive folder using Explorer

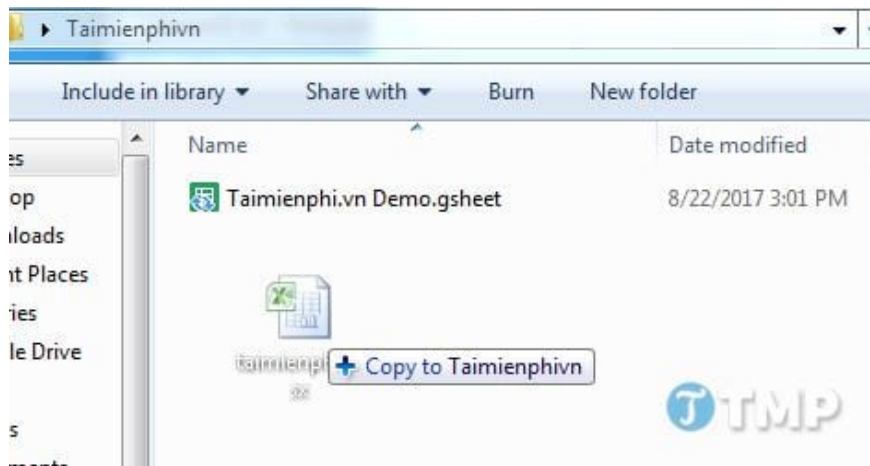


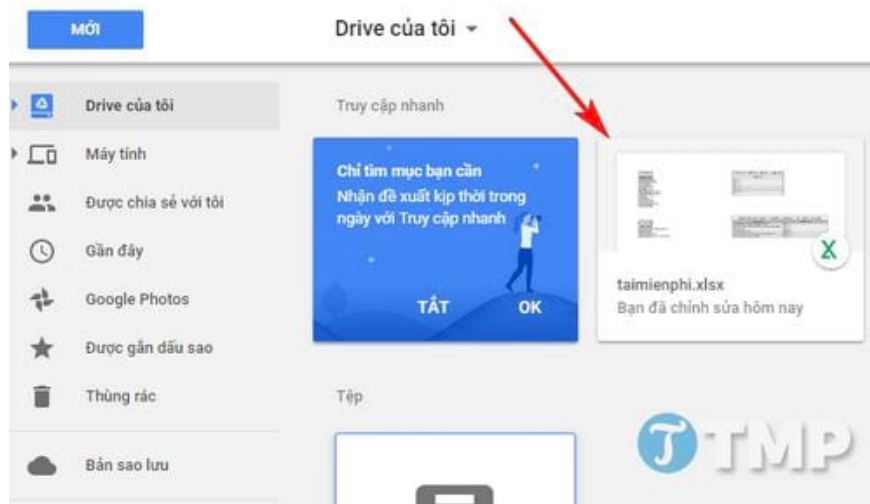
Step 8: Click **Start** to start backing up and synchronizing.



Now all files on Google Drive Web will also be synchronized with the Folder you selected and vice versa.

Copy the files you want to back up to the Google Drive Folder on your computer and they will also be synchronized on Google Drive Web.





Hopefully, through this article, you can easily install and use Google Drive to store and synchronize data to avoid data loss. If you encounter any difficulties during the process, do not hesitate to comment below, TipsMake's technical team will support you.

You finished reading the article "**Instructions for installing and using Google Drive on all devices**" edited by the [TipsMake](#) team. We hope this article has provided you with many useful tech tips and tricks. You can search for similar articles on tips and guides. Thank you for reading and for following us regularly.