

# Instructions for inserting background images into SVG images in PowerPoint

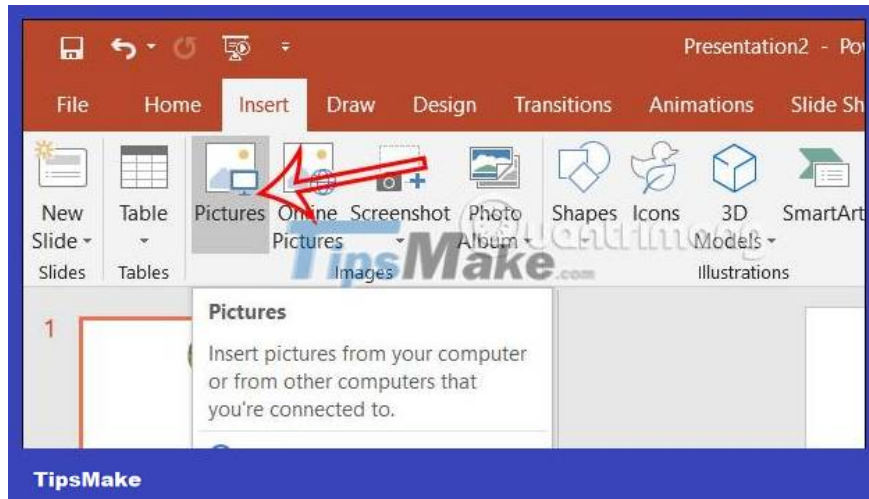
Once you have converted an SVG image to a shape in PowerPoint, you can freely edit it to your liking, including inserting a background image.

PowerPoint supports you with many tools to design presentation content, such as merging images into PowerPoint text, or inserting background images into SVG images with very simple operations. You just need to upload the SVG image to PowerPoint and then convert it to shape. Once you have converted an SVG image to a shape in PowerPoint, you can freely edit it to your liking, including inserting a background image. Below are instructions for inserting background images into SVG images on PowerPoint.

## How to insert a background image into an SVG image in PowerPoint

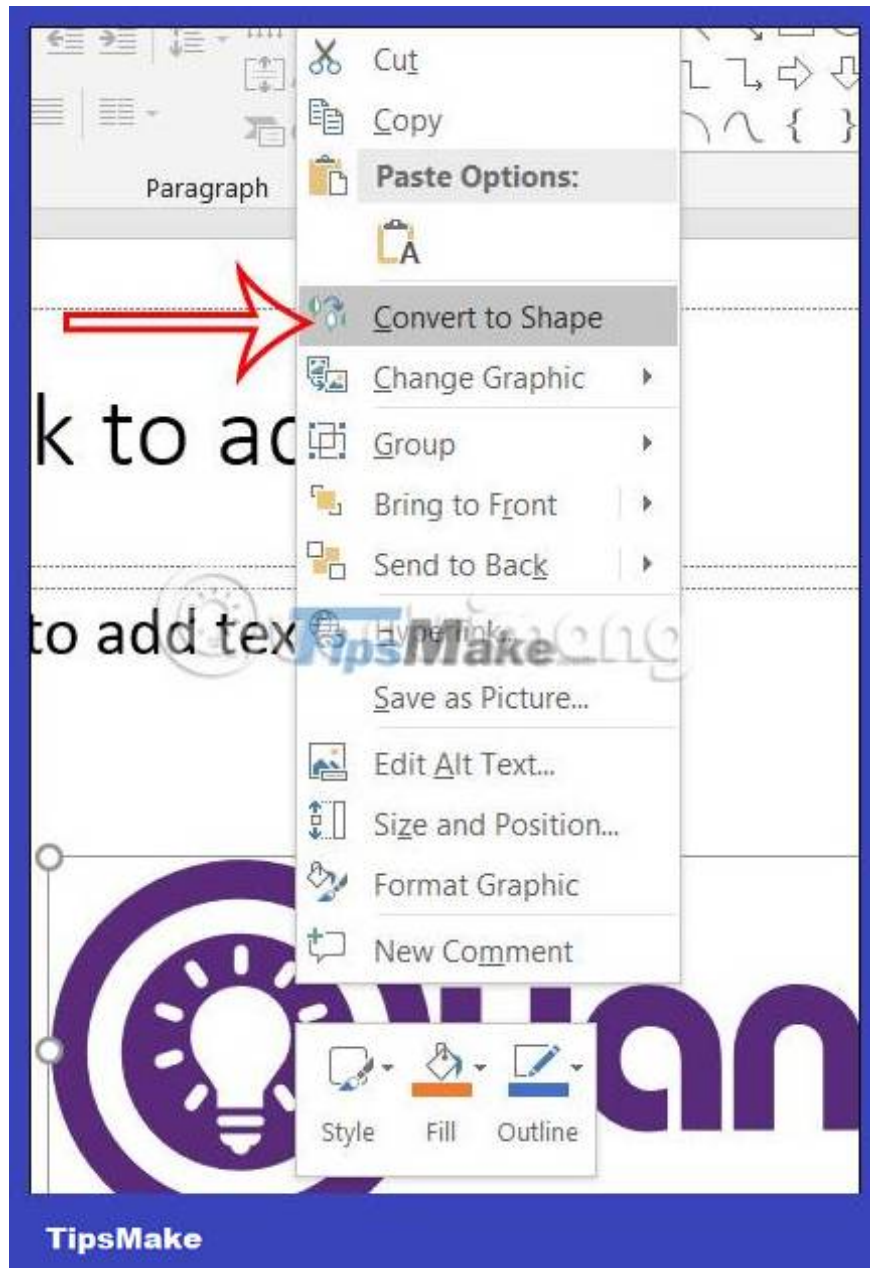
### Step 1:

First you need to download that SVG image and then at the PowerPoint interface, **click Insert** and then **select Picture** to upload that SVG image to PowerPoint.

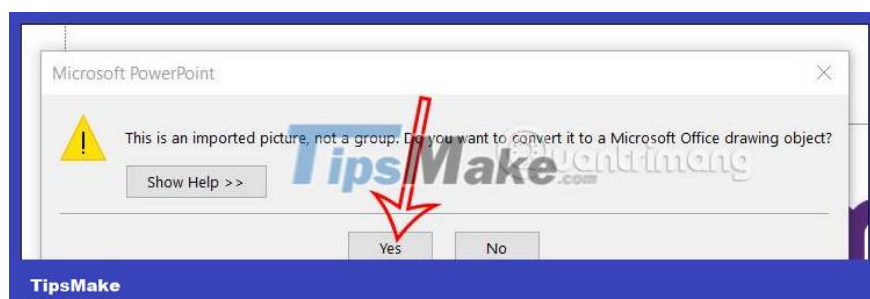


### Step 2:

After downloading the SVG image in PowerPoint, **right-click on the image** and **select Convert to Shape** to convert the image to shape.

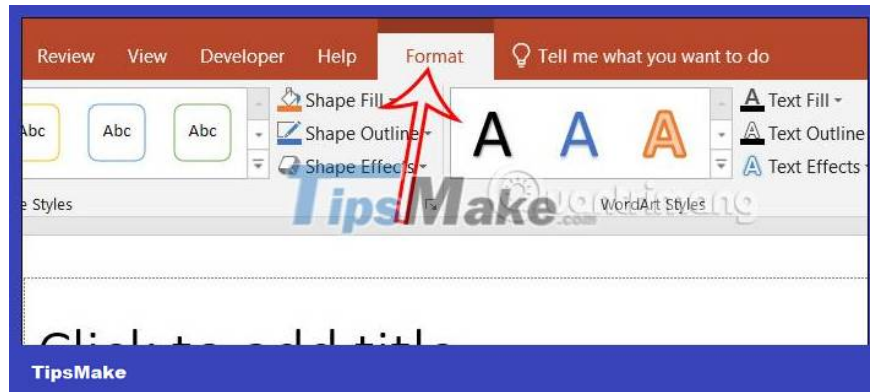


Now display the interface as shown below, we **click OK** to agree to convert to shape.



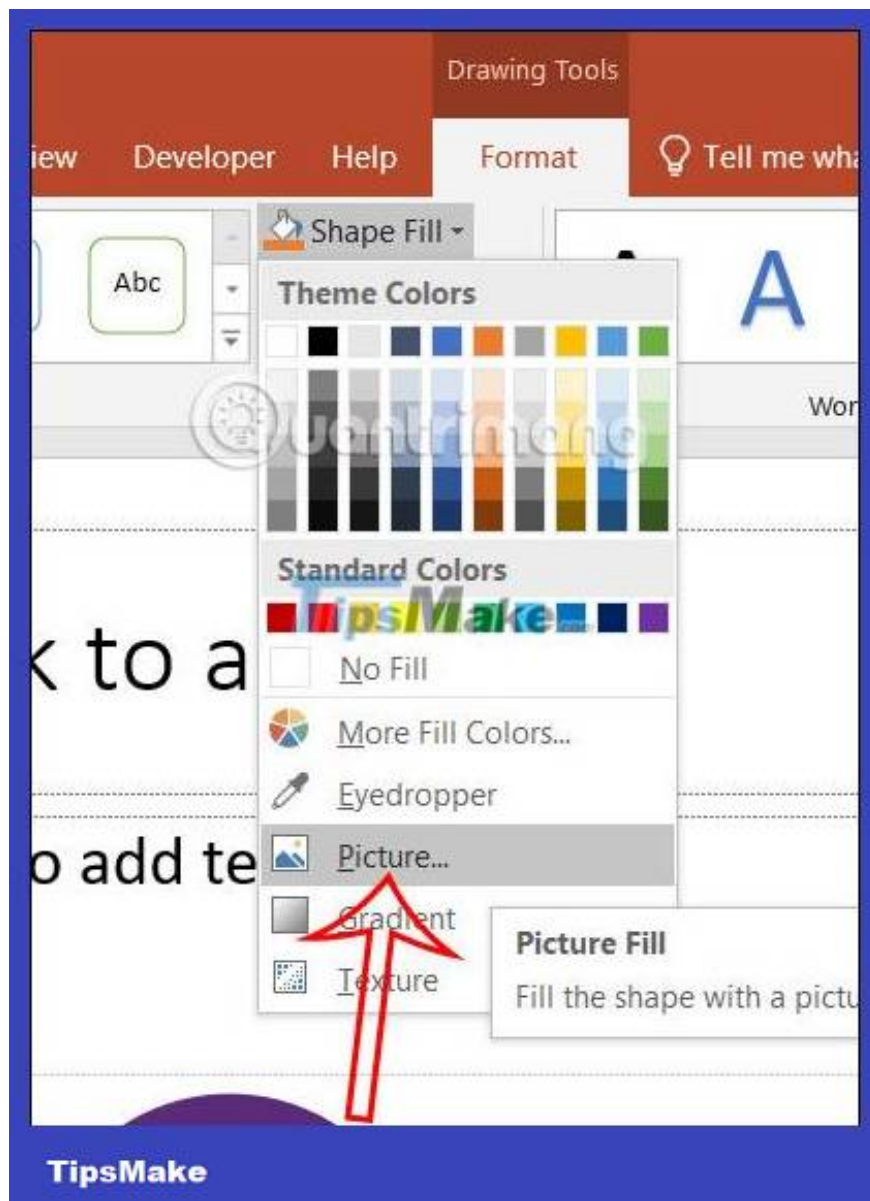
**Step 3:**

After converting to shape, users can customize it to their liking. Click on the shape then look up, **click Format** to adjust the format.



**Step 4:**

Next, **click on Shape Fill** below , then **click on Picture** shown below.

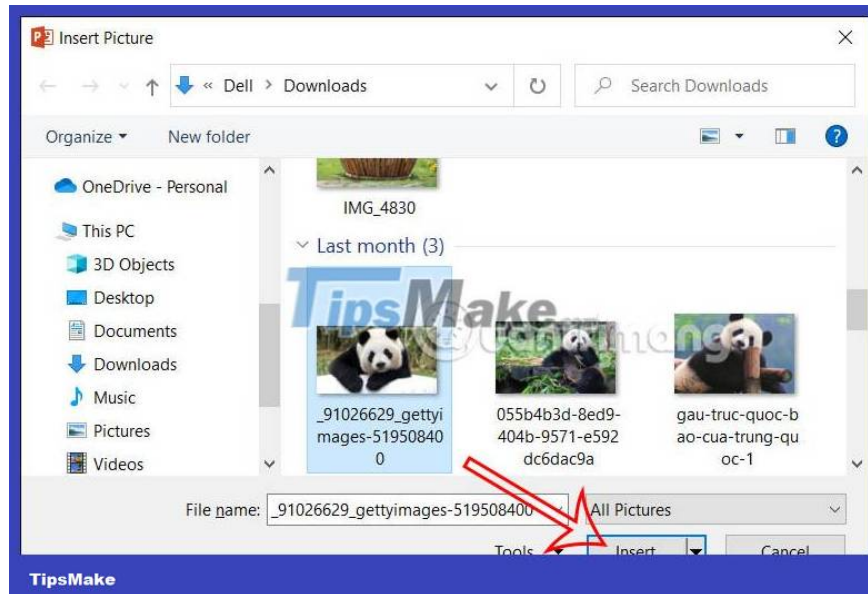


Now you choose to use a background image to insert the shape in PowerPoint.



### Step 5:

For example, using a background image from the computer to insert into the shape, we click on the image and select **Insert** .



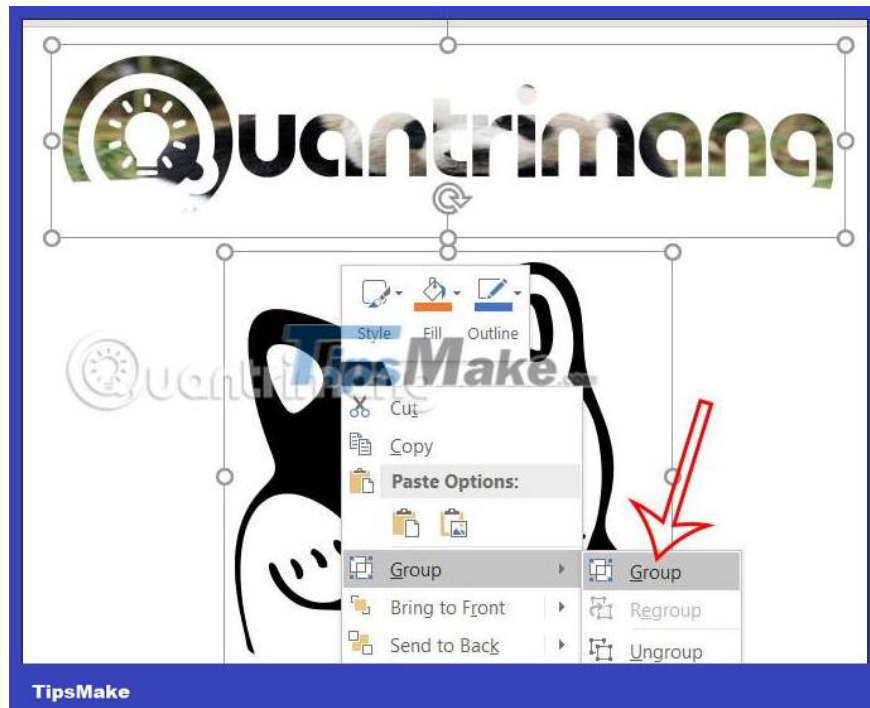
As a result, we will see the background image embedded in the image as below.



### Step 6:

In case you have uploaded multiple SVG images to PowerPoint and want to insert a background image into these SVG images , click on 1 SVG image then press **Shift** and then click on the remaining SVG image .

**Right-click** on the image, then click **Group**, then select **Group** to group these two objects.



Next, **switch to Shape format** and then insert the background image into the 2 images.



If you want to **separate these two images** , click on the merged object, right-click and **select Ungroup** .



When you separate the two shapes, the combined background image will automatically adjust.



You finished reading the article "**Instructions for inserting background images into SVG images in PowerPoint**" edited by the [TipsMake](#) team. We hope this article has provided you with many useful tech tips and tricks. You can search for similar articles on tips and guides. Thank you for reading and for following us regularly.