

Instructions for fixing Wifi errors with yellow exclamation

The yellowish-white Wifi error took place quite popularly in the Wifi device, causing the computer to not catch WiFi. This error occurs when IP conflicts or the number of Wi-Fi connections leads to limited network.

The yellowish-white Wifi error took place quite popularly in the Wifi device, causing the computer to not catch WiFi. This error occurs when IP conflicts or the number of Wi-Fi connections leads to limited network. What should I do to meet this situation? We would like to guide you how to fix Wifi errors with yellow exclamation

1. Fix some problems for Wi-Fi networks
2. 9 ways to speed up Wifi effectively
3. How to play Wifi from iPhone, Android to laptop
4. Instructions to fix the yellow exclamation computer network error

Method 1: Restart Wifi device : modem, router

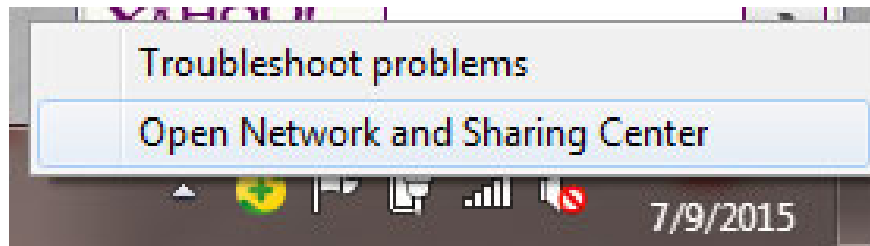
First, you should restart your Wifi device. Turn off the power of the Wifi device, wait about 1-2 minutes, then plug it back in. **Note** : only power off and not restart Wifi. Then try turning on Wifi again to see if the connection is normal.



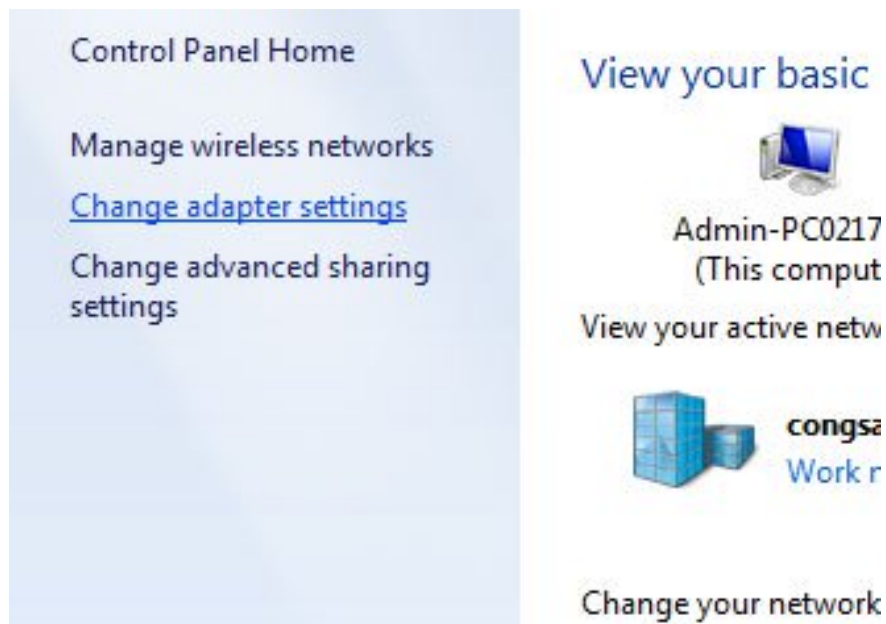
If still not, try using another computer to connect to Wifi again, if another computer is connected normally, it will show that your computer is having IP conflict. To remedy this situation, you follow the following 2 ways.

Method 2: Reset the static IP to the computer

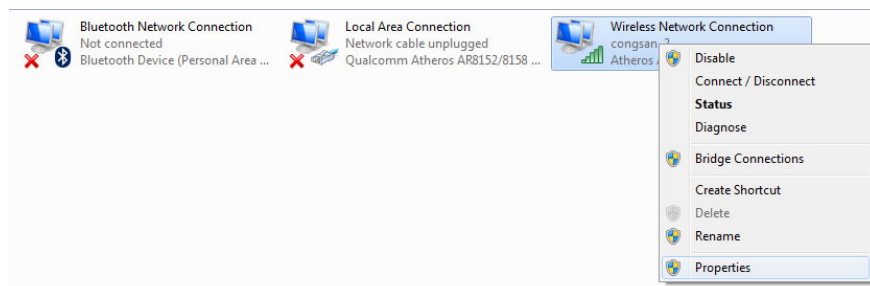
Step 1 : You right-click on the network icon select Open Network And Sharing Center



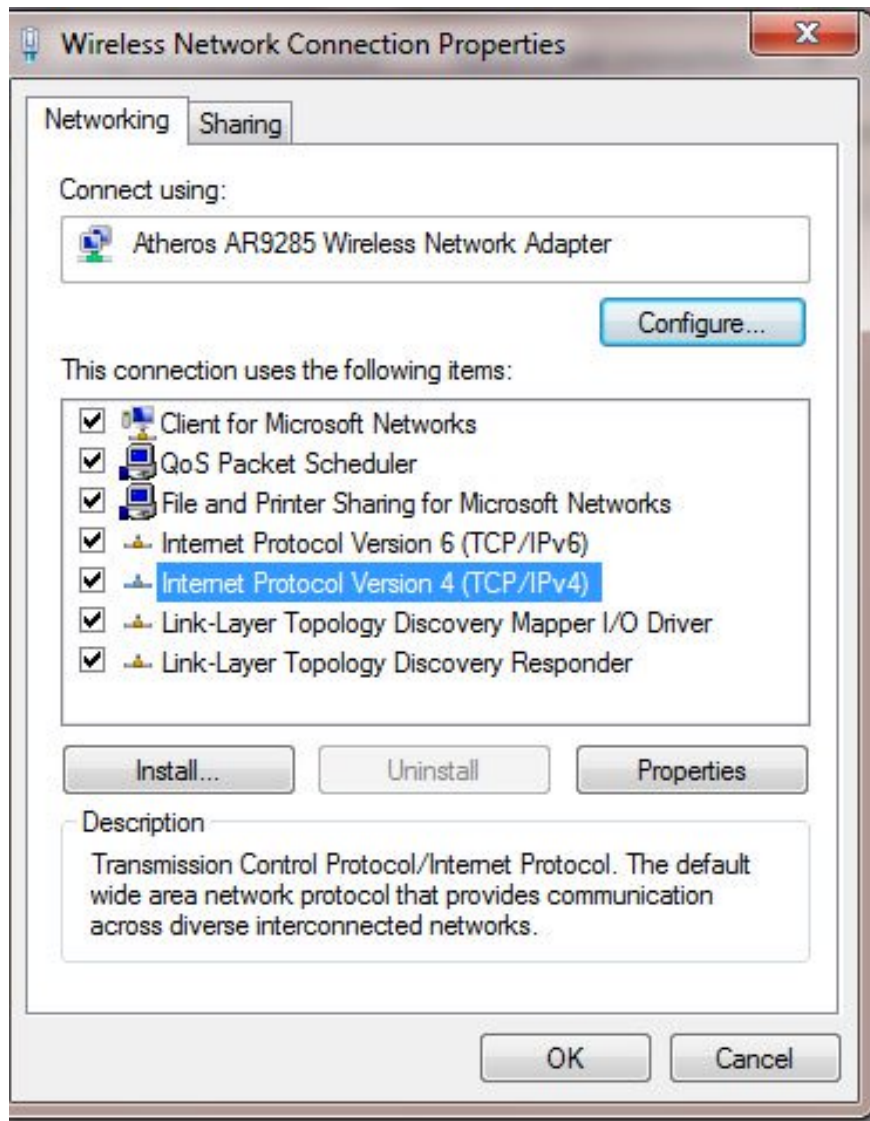
Step 2 : Next, choose **Change Adapter Settings**



Step 3: Right-click the connected Wifi and select **Properties**



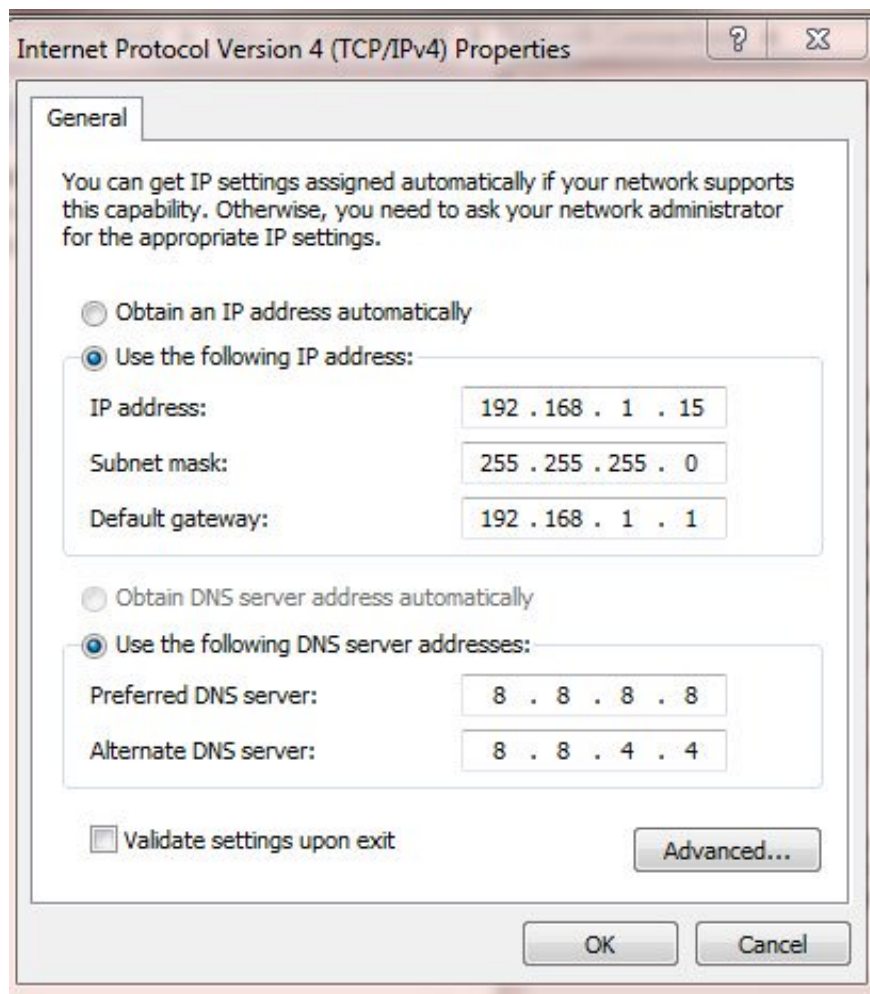
Step 4 : Double click **Internet Protocol Version 4 (TCP / IPv4)**



Step 5 : The new interface shows you select the **Use the following IP address** line and fill in the following parameters:

1. **IP address** (*this is what you write yourself*): for example **192.168.1.15** (note: **192.168.1** is required because this is the parameter of the modem, you can only change the number 15 to another number. For example, 192.168.1.16 or 192.168.1.20 .)
2. **Subnet mask** : default is **255.255.255.0**
3. **Default Gateway** : Please enter **192.168.1.1**

Continuing to select **Use the following DNS server addresses**, you enter Google DNS at **8.8.8.8** and **8.8.4.4** .

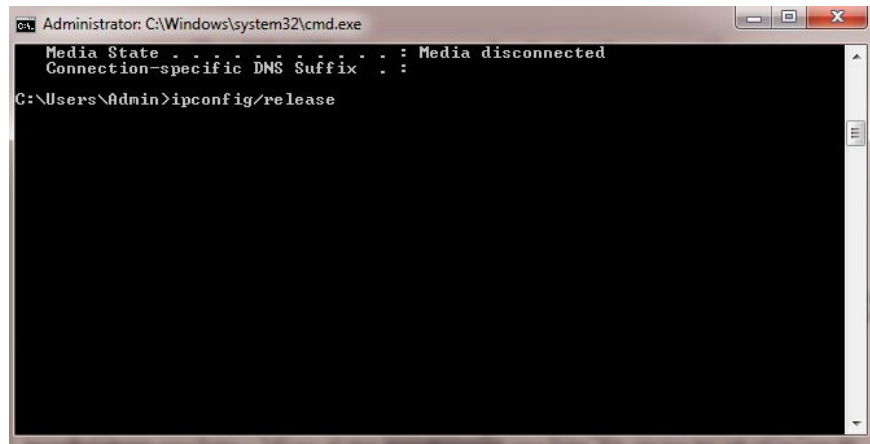


After finishing, you select OK is finished

Note : If you open a computer that has already set a static IP, switch to dynamic IP by clicking on the **Obtain an IP address** button and **automatically** connect to Wifi. If it is not, you can reset the static IP to the original static IP.

Method 3: Re-issue dynamic IP with DOS commands

First open the **RUN** window (*Windows + R shortcut*) -> type **cmd** command -> DOS interface display type **ipconfig / release** , enter Enter-> Continue typing **ipconfig / renew** to complete Enter. Now try to reconnect to see if it is okay



```
Administrator: C:\Windows\system32\cmd.exe
Media State . . . . . : Media disconnected
Connection-specific DNS Suffix . :
C:\Users\Admin>ipconfig /release
```

Method 4: Reset the Wifi driver for the computer

Wifi error is subject to yellow exclamation also because the Wifi driver in your computer is faulty, please reinstall the Wifi driver and reconnect to see how.

Method 5: Reconfigure the wifi device

If you have done all the above and still cannot successfully connect to Wifi, then your device may be faulty and you will have to reconfigure it. If you don't know how to configure wifi, you can refer to our article below

Instructions for installing Wifi Router Tenda W311R

The above is the whole way to fix it every time the network is yellowed. Hope these ways will help you fix errors successfully!

You finished reading the article "**Instructions for fixing Wifi errors with yellow exclamation**" edited by the [TipsMake](#) team. We hope this article has provided you with many useful tech tips and tricks. You can search for similar articles on tips and guides. Thank you for reading and for following us regularly.