

Instructions for fixing USB connection errors on Windows 10 using Windows USB Troubleshooter

Microsoft has released a tool to help fix USB connection errors on Windows 10 called Windows USB Troubleshooter. It will automatically diagnose and fix some common problems when connecting USB.

Microsoft has released a tool to help fix USB connection errors on Windows 10 called Windows USB Troubleshooter. It will automatically diagnose and fix some common problems when connecting USB.

Some errors can be fixed:

1. USB class filter ?ã không nh?n ra.
2. Thi?t b? USB không ph?i ???c nh?n ra.
3. USB printer device is not printing.
4. USB storage device không th? ??ng nh?p
5. Windows Update is configured to never update drivers.

Instructions on how to use the Windows USB Troubleshooter to fix USB connection errors on Windows 10:

Step 1 : Download and install the Windows USB Troubleshooter tool.

Link to download Windows USB Troubleshooter.

Automatically diagnose and fix Windows USB problems

Applies to: Windows 7, Windows 8.1, Windows 10

Follow these steps to automatically diagnose and repair common USB issues:

- Select the **Download** button on this page.
- In the **File Download** dialog box, click **Run** or **Open**, and then follow the steps in the Windows USB Troubleshooter .

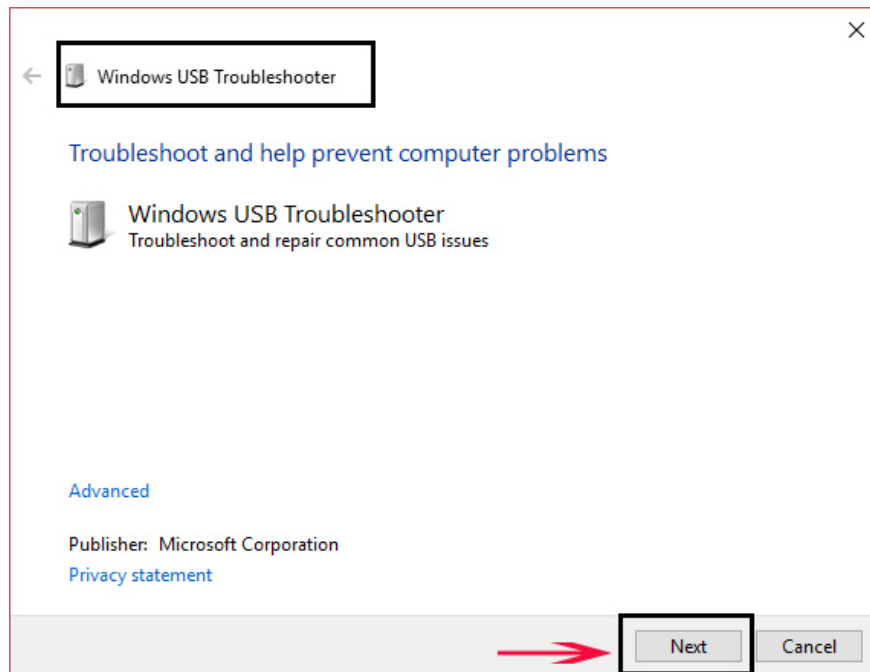
Notes

- This troubleshooter might be in English only. However, the automatic fix also works for versions of Windows in other languages.
- If you're not on the computer that has the problem, save the troubleshooter to a flash drive or a CD, and then run it on the computer that has the problem.

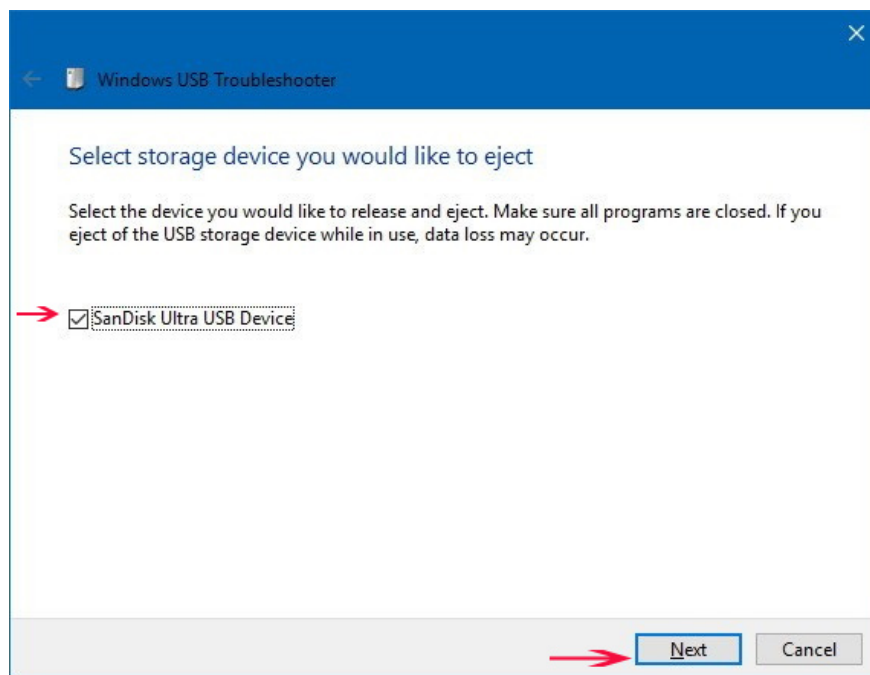


Click **Download** and then run the **WinUSB.diagcab** file .

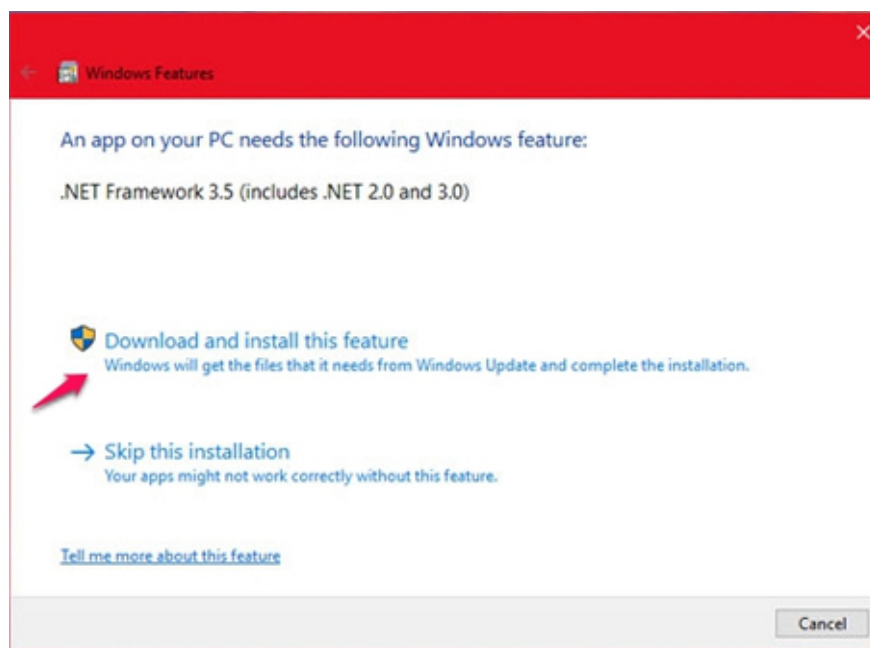
Step 2 : The Windows USB Troubleshooter interface appears, continue to click **Next** .



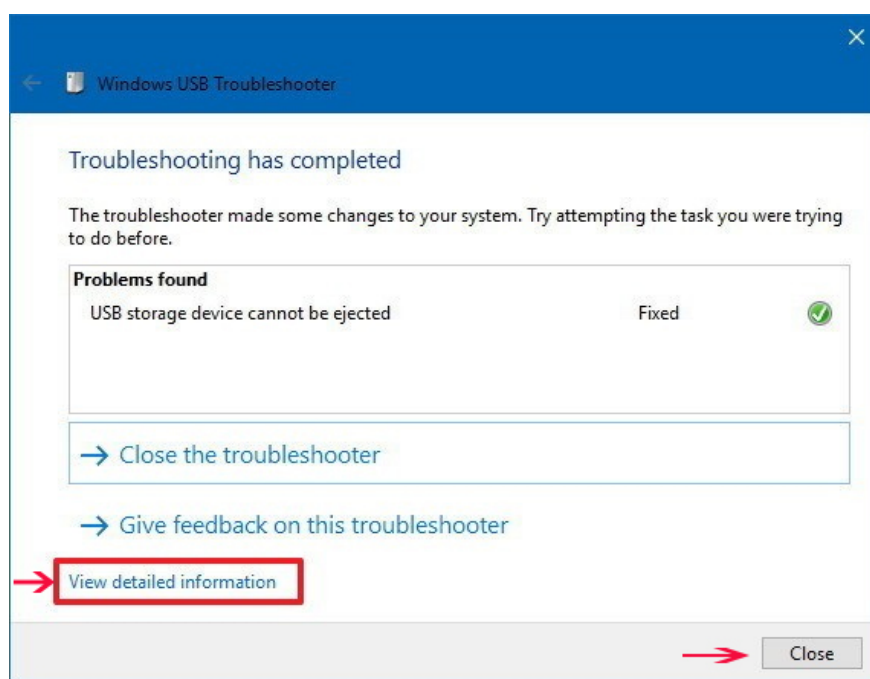
Step 3 : In the new window, this tool will detect and prompt you to select the device you want to fix. Here, select the USB device, then click Next.



Note: If you have not installed the **.NET Framework 3.5** then in the new window click **Download and install the feature** .



Step 4: Finally click your mouse and click **Close** .



See more:

1. Set up custom icons for portable hard drives on Windows 10
2. These tools help to safely disconnect the USB from the computer
3. How to edit the host file on Windows 10
4. This is the "culprit" that makes Windows 10 computers start up slowly
5. Guide to see which personal data has been collected by Microsoft on Windows 10

You finished reading the article "**Instructions for fixing USB connection errors on Windows 10 using Windows USB Troubleshooter**" edited by the [TipsMake](#) team. We hope this article has provided you with many useful tech tips and tricks. You can search for similar articles on tips and guides. Thank you for reading

and for following us regularly.
