

# Instructions for fixing the error 'Windows cannot connect to the printer'

A shared printer for multiple PCs is a very common thing in an office environment. However, a very common error that interferes with the printing process is 'Windows cannot connect to the printer'. In the following article, Phong Vu would like to share with readers about 5 ways to fix the error that cannot connect to the above printer.

A shared printer for multiple PCs is a very common thing in an office environment. However, a very common error that interferes with the printing process is 'Windows cannot connect to the printer' (most common in Windows 7). In the following article, Phong Vu would like to share with you how to fix errors that cannot connect to the above printer.

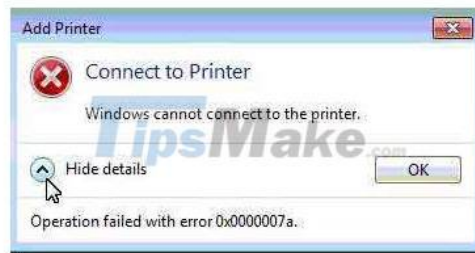
The error 'Windows cannot connect to the printer' is most likely accompanied by specific lines of code like `0x0000007e`.



## Windows Cannot Connect to the Printer - Operation Failed with Error 0x0000002



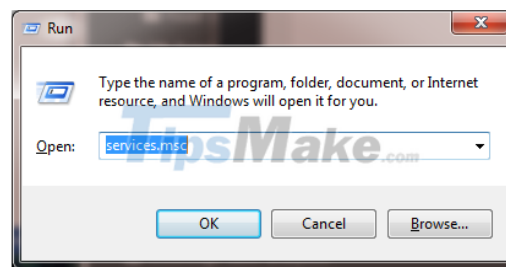
## Windows Cannot Connect to the Printer - Operation Failed with Error 0x0000007



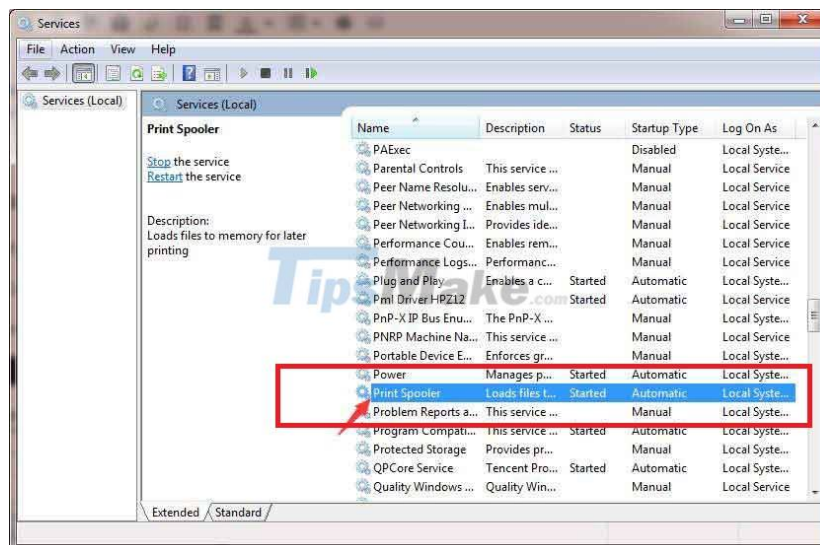
## Windows Cannot Connect to the Printer - Operation Failed with Error 0x0000007a

### Method 1: Restart the *Printer Spooler Service*

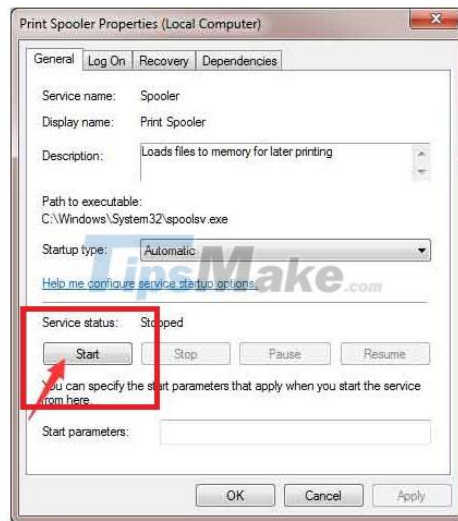
1. Use the *Windows + R* key combination to open the *Run* dialog box.



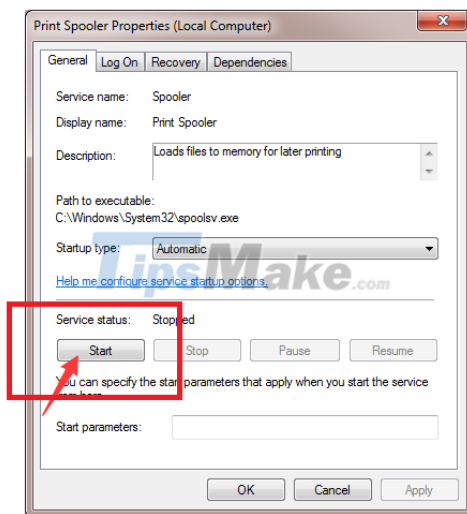
2. Type the **services.msc** code line and click OK.
3. Search for the **Print Spooler** item and double-click the selected item icon.



4. Select **Stop** at **Service status** and then click **Start** again shortly.



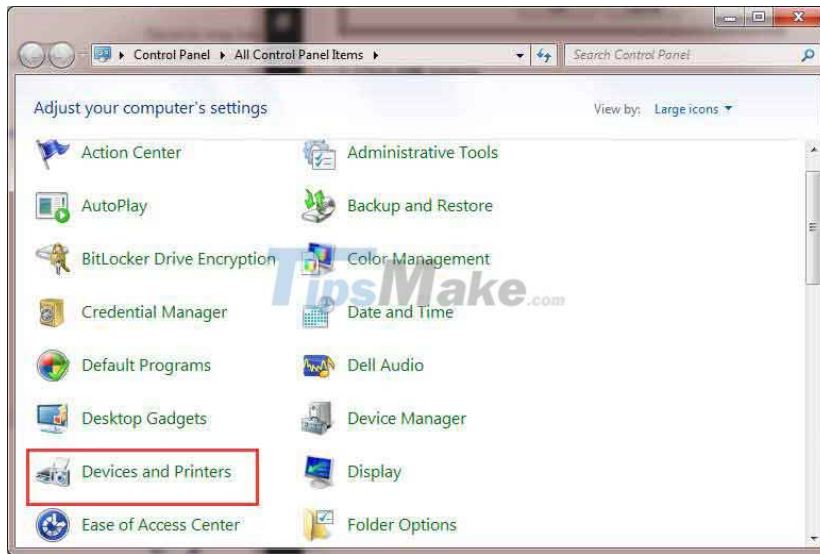
5. Select **OK** and check the printer's normal operation.



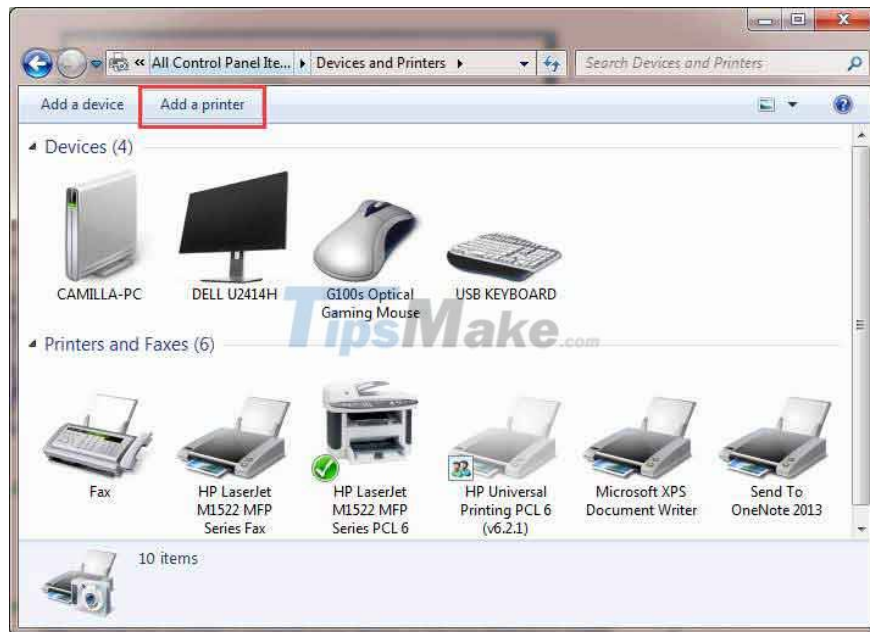
If the error ' *Windows cannot connect to the printer* ' has not been fixed, you can switch to the following 2 ways.

Method 2: Create a new **Local Port**

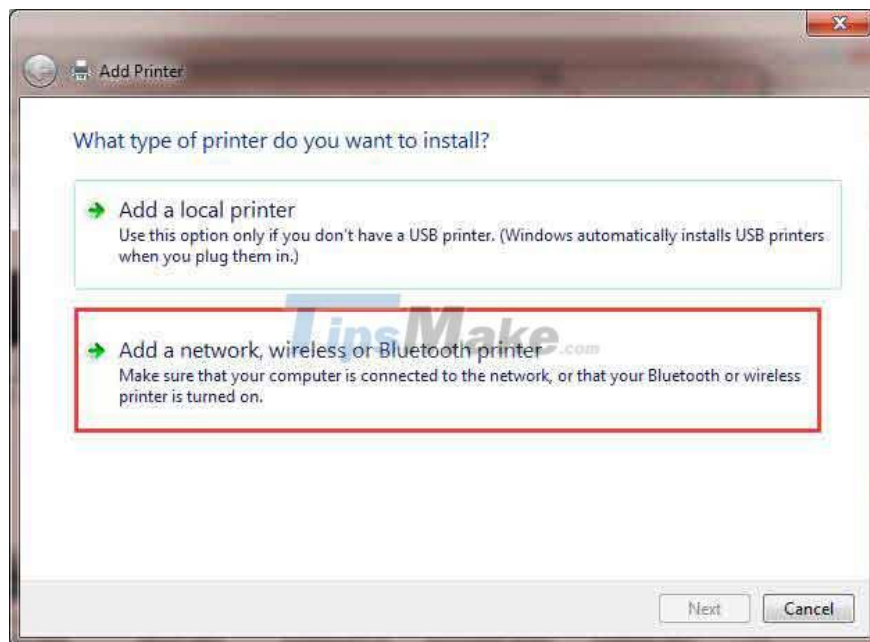
1. Open **Control Panel** .
2. Select **Devices and Printer** .



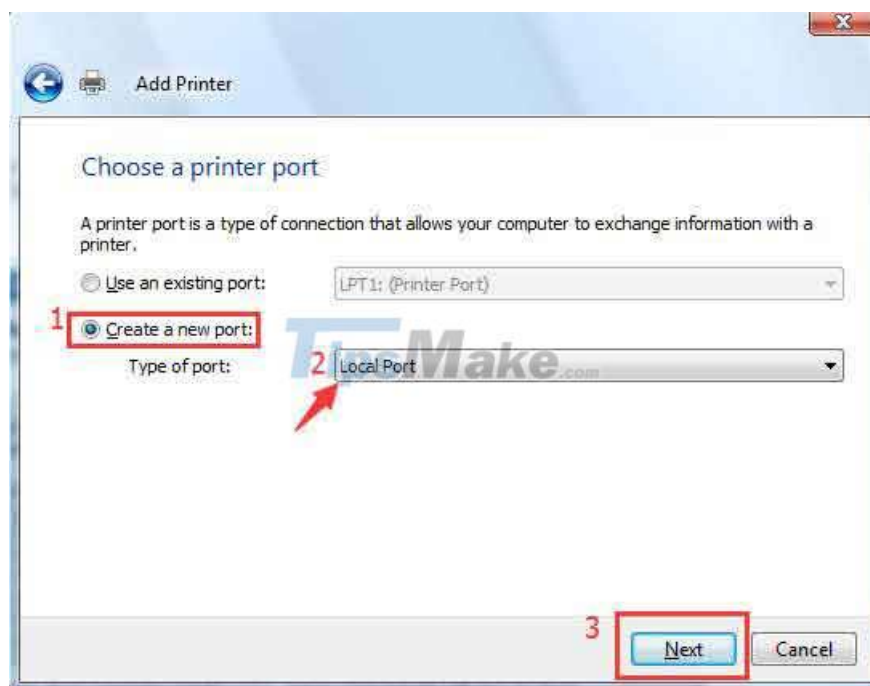
3. Continue to click on **Add a printer** .



4. Select **Add a network, wireless or Bluetooth printer** .



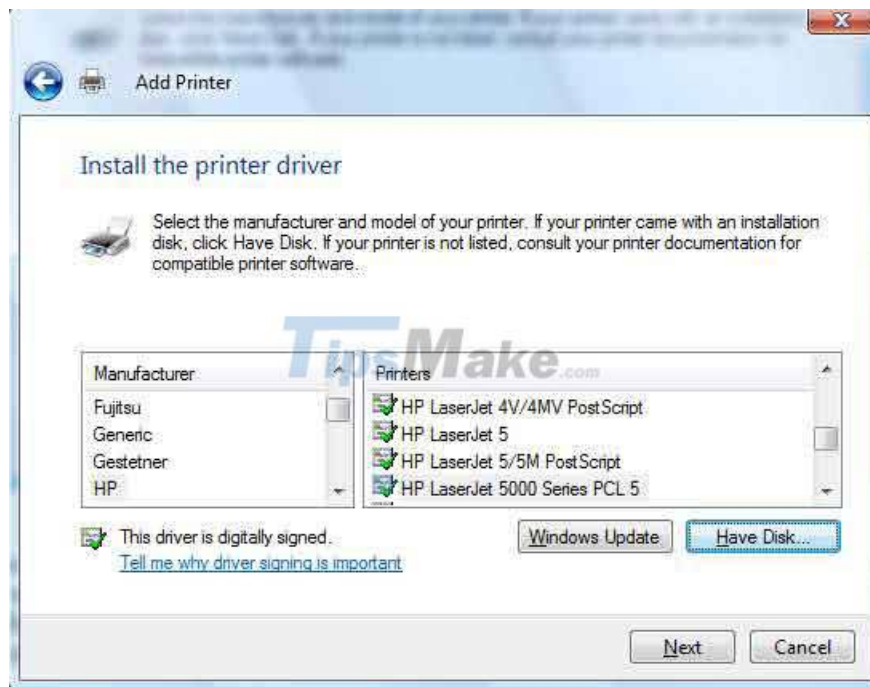
5. Select **Create a new port** , change the '*Type of port*' configuration to **Local Port** and **Next** .



6. For **Enter a port name** in the box that appears, you need to fill in the address of the printer. This parameter works as follows: your **IP address** or **PC name Printer name**.

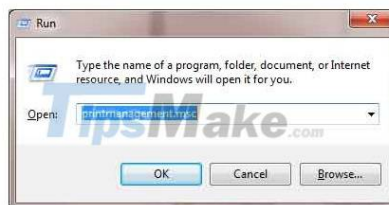


7. Select the publisher and printer model and then follow the instructions to complete the printer.

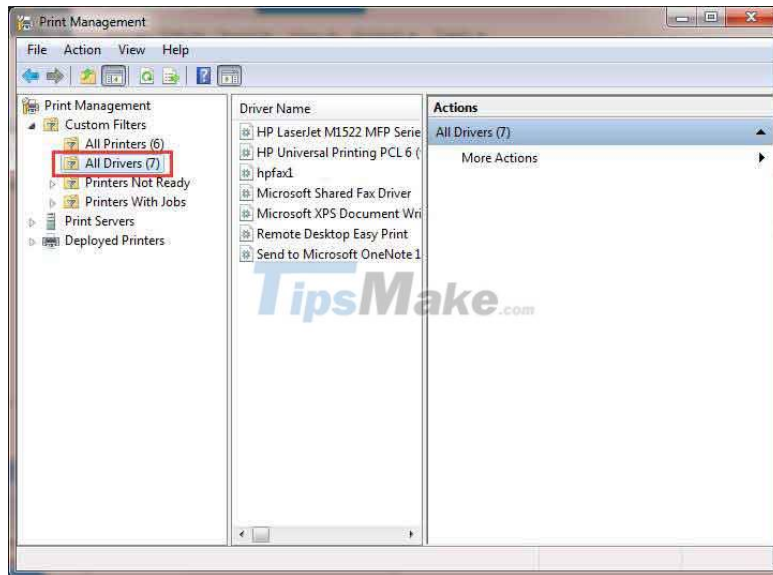


Method 3: Delete and reinstall the printer driver to fix the error ' *Windows cannot connect to the printer* '

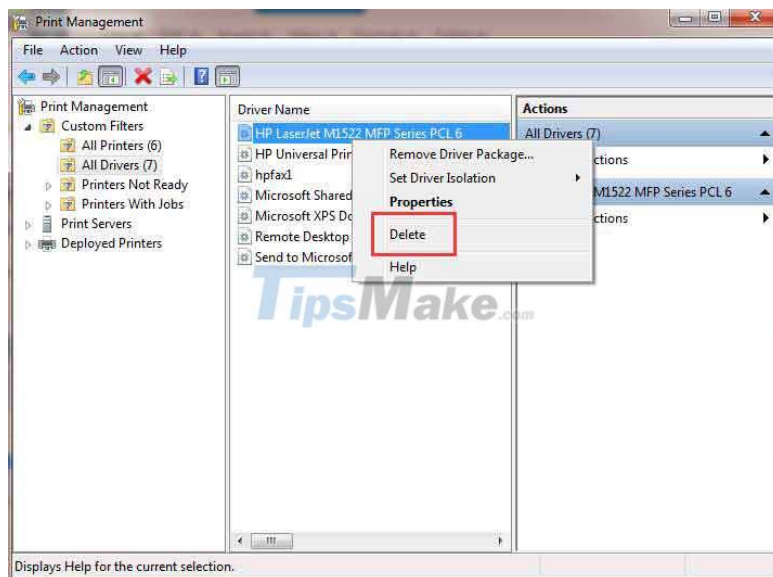
1. **Windows + R** to open the **Run** dialog box .
2. Type the code line **printmanagement.msc** and confirm.



3. Click on **All Drivers** .



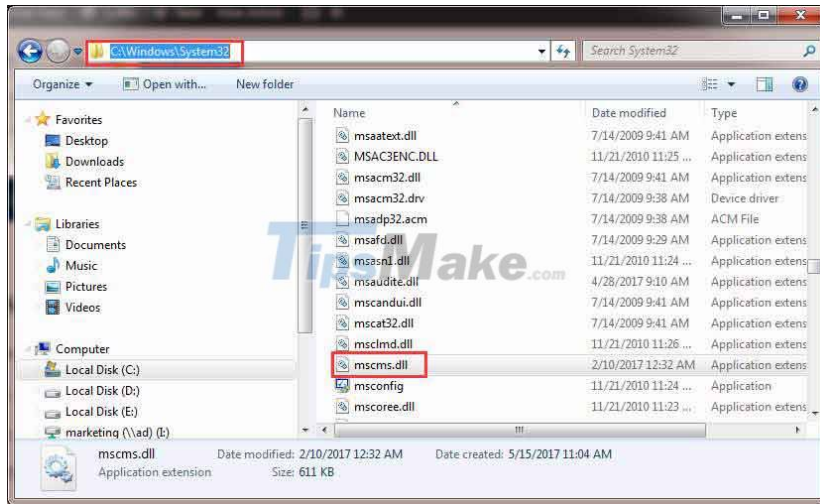
4. Find the printer driver in the middle pane, right click and select **Delete** . If you find more than one driver, repeat the steps above and delete them one by one.



5. Add to the printer driver again. The best download address is the official website of the printer publisher that you are currently using.

Method 4: Copy system file ' **mscms.dll** '

1. **Navigate to C: Windows\system32** folder and search for **mscms.dll** file



2. Copy the above file to the following location

**C: windowssystem32spooldriversx643** *If you are using a 64-bit operating system.*

**C: windowssystem32spooldriversw32x863** *If you are using 32-bit operating system.*

3. Reconnect again to the printer.

With these 4 ways, Phong Vu Technology hopes you can handle the error '*Windows cannot connect to the printer*' by yourself. Feel free to leave a question if something goes wrong and we're happy to help.

You finished reading the article "**Instructions for fixing the error 'Windows cannot connect to the printer'**" edited by the [TipsMake](#) team. We hope this article has provided you with many useful tech tips and tricks. You can search for similar articles on tips and guides. Thank you for reading and for following us regularly.