

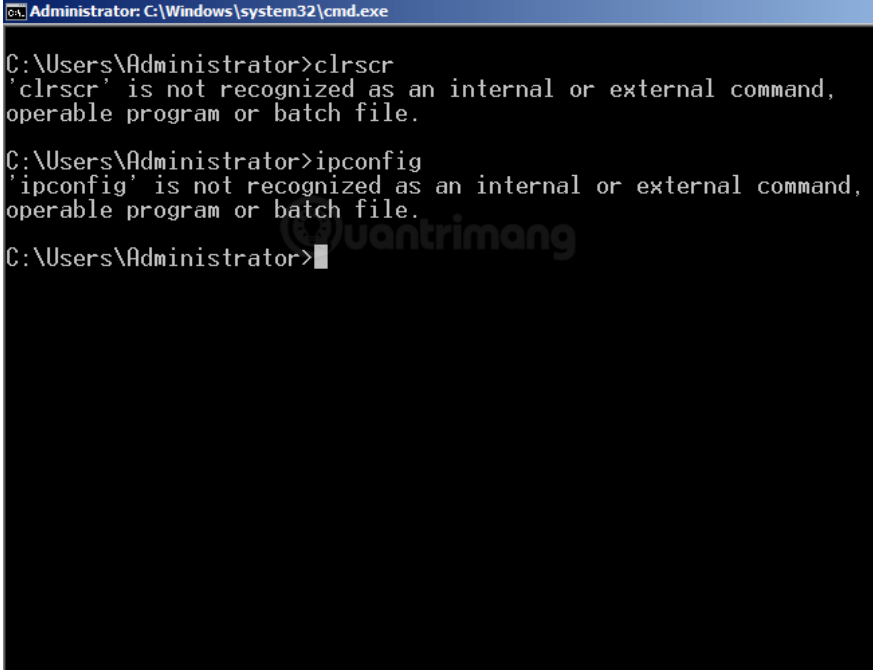
Instructions for fixing errors 'not recognized as an internal or external command' when using CMD in Windows

On some day, you turn on Computer, go to CMD and get an error that is not recognized as an internal or external command, operable program or batch file. How will it be handled?

Yes, this case is very frequent, especially for those who install many programming programs and applications such as Java, set up the server itself . which directly affects the Environment part of Windows. That is fault:

1. 'cmd command syntax' **is not recognized as an internal or external command, operable program ho?c batch file.**

The error is if you type any command into CMD - Command of Windows, such as Ping, ipconfig . will receive the above error message.



```
Administrator: C:\Windows\system32\cmd.exe
C:\Users\Administrator>cls
'cls' is not recognized as an internal or external command,
operable program or batch file.
C:\Users\Administrator>ipconfig
'ipconfig' is not recognized as an internal or external command,
operable program or batch file.
C:\Users\Administrator>
```

So how to fix "is not recognized as an internal or external command ." Invite you to refer to the article below of TipsMake.com offline!

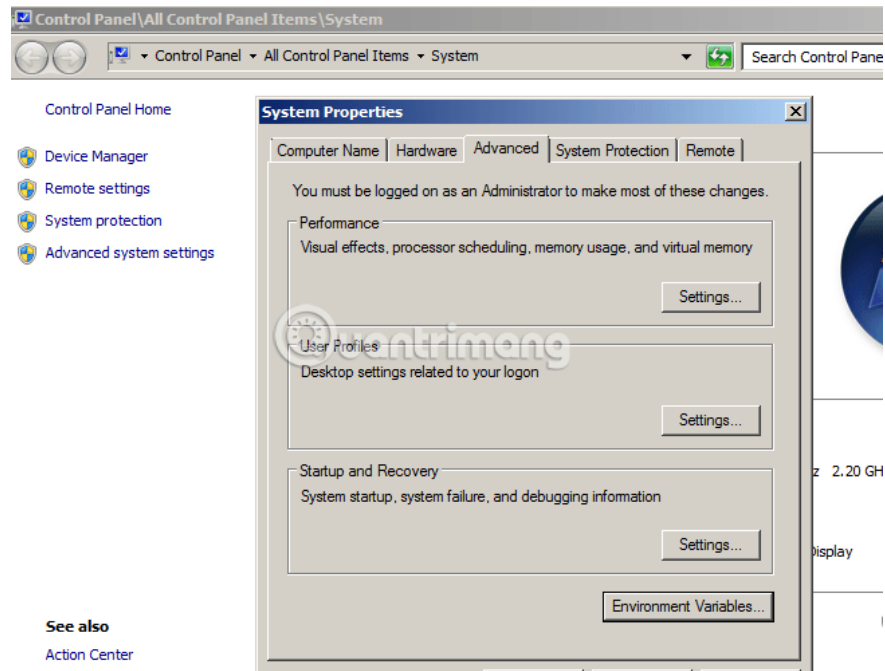
See more reference articles about basic commands in CMD here.

What causes this error "is not recognized as an internal or external command ." on Windows?

As mentioned above, this error occurs when you install programs that affect the Windows Environment Variables section like programming applications, creating servers . When these environment variable values ?? change, it will cause "misunderstandings" or confusion when Windows executes programs and certain commands.

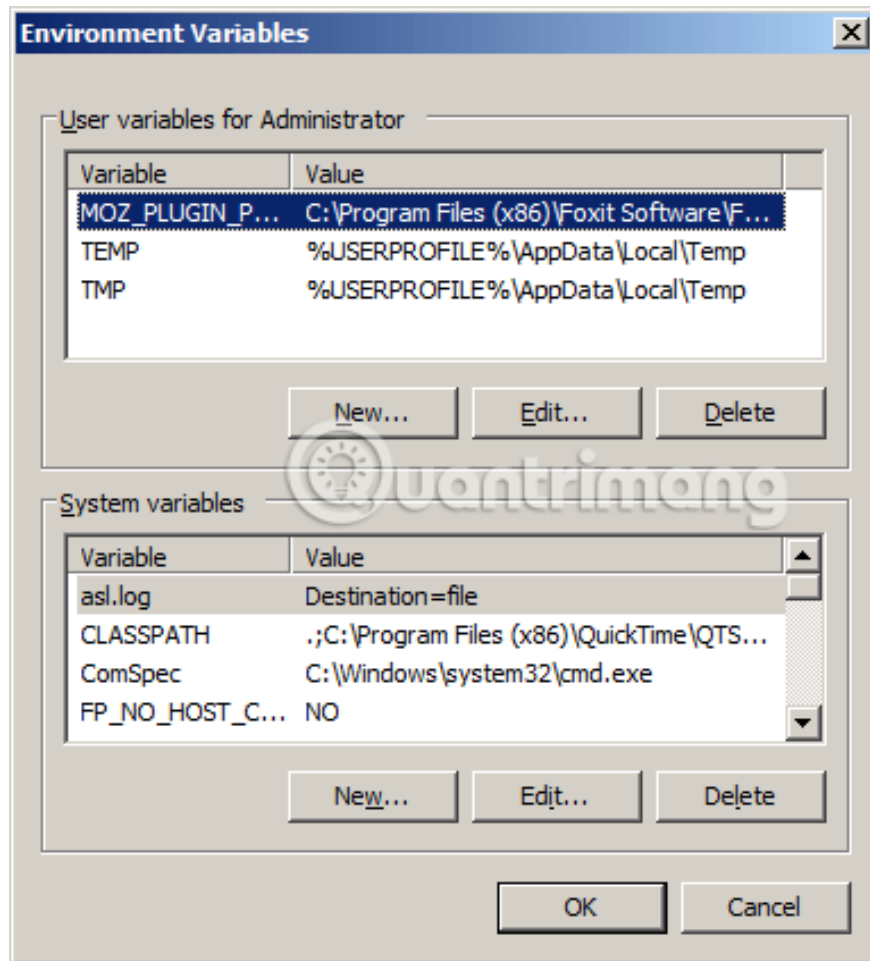
Remedy when an error "is not recognized as an internal or external command .":

First, go to **Environment Variables** through **My Computer> System Properties> Advanced** as shown:



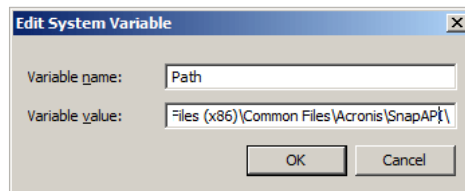
Or go to Control PanelAll Control Panel ItemsSystem

The **Environment Variables** window will look like this:

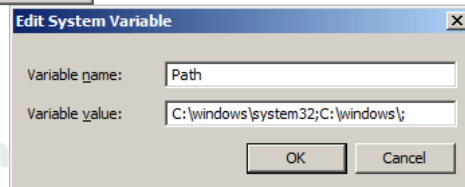


In the System Variables section, locate the Path section, double-click to edit, add this to:

1. C: windowssystem32; C: windows;



Trước khi sửa



Sau khi sửa

Click OK to save the changes, then retry the command in the CMD window to see if the error is gone.

```
Administrator: C:\Windows\system32\cmd.exe
Microsoft Windows [Version 6.1.7600]
Copyright (c) 2009 Microsoft Corporation. All rights reserved.

C:\Users\Administrator>ping google.com

Pinging google.com [42.112.10.154] with 32 bytes of data:
Request timed out.
Reply from 42.112.10.154: bytes=32 time=10ms TTL=59
Reply from 42.112.10.154: bytes=32 time=16ms TTL=59
Reply from 42.112.10.154: bytes=32 time=3ms TTL=59

Ping statistics for 42.112.10.154:
    Packets: Sent = 4, Received = 3, Lost = 1 (25% loss),
    Approximate round trip times in milli-seconds:
        Minimum = 3ms, Maximum = 16ms, Average = 9ms

C:\Users\Administrator>
```

Good luck!

You finished reading the article "**Instructions for fixing errors 'not recognized as an internal or external command' when using CMD in Windows**" edited by the [TipsMake](#) team. We hope this article has provided you with many useful tech tips and tricks. You can search for similar articles on tips and guides. Thank you for reading and for following us regularly.