

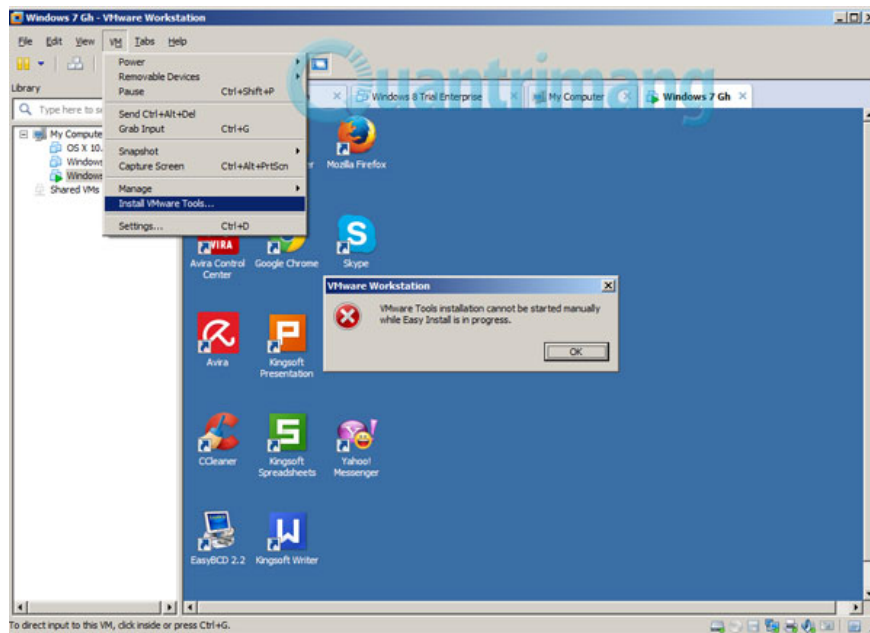
Instructions for fixing errors do not install VMware Tools

You have successfully installed the virtual machine, but you cannot perform the drag and drop operation between the real machine and the virtual machine as before, you cannot fullscreen the virtual machine ... why? It's really simple, the reason is that VMware Workstation uses the file system `autoinst.flp` (located in the virtual machine installation directory) to create the floppy drive ...

In fact, this phenomenon we encounter quite often, when you need to install **VMware Tools** support tool in VMware Workstation, you will get the following error:

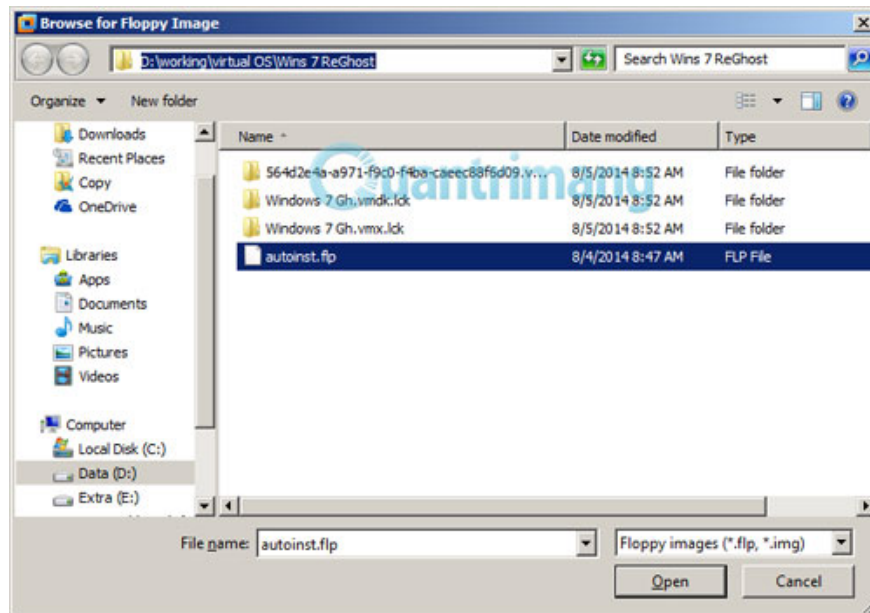
VMware Tools installation cannot be started manually, trong khi Easy cài ??t là trong progress.

As shown below:

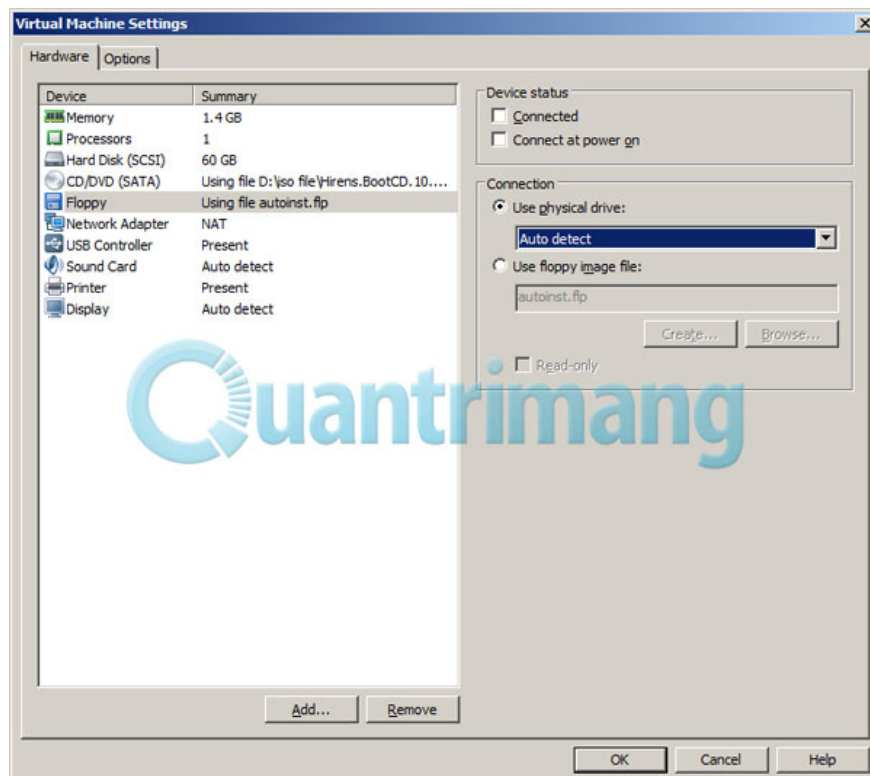


And what are the consequences of this? We can no longer drag and drop files between virtual and real machines, virtual machines do not work in full screen mode anymore . and many other problems.

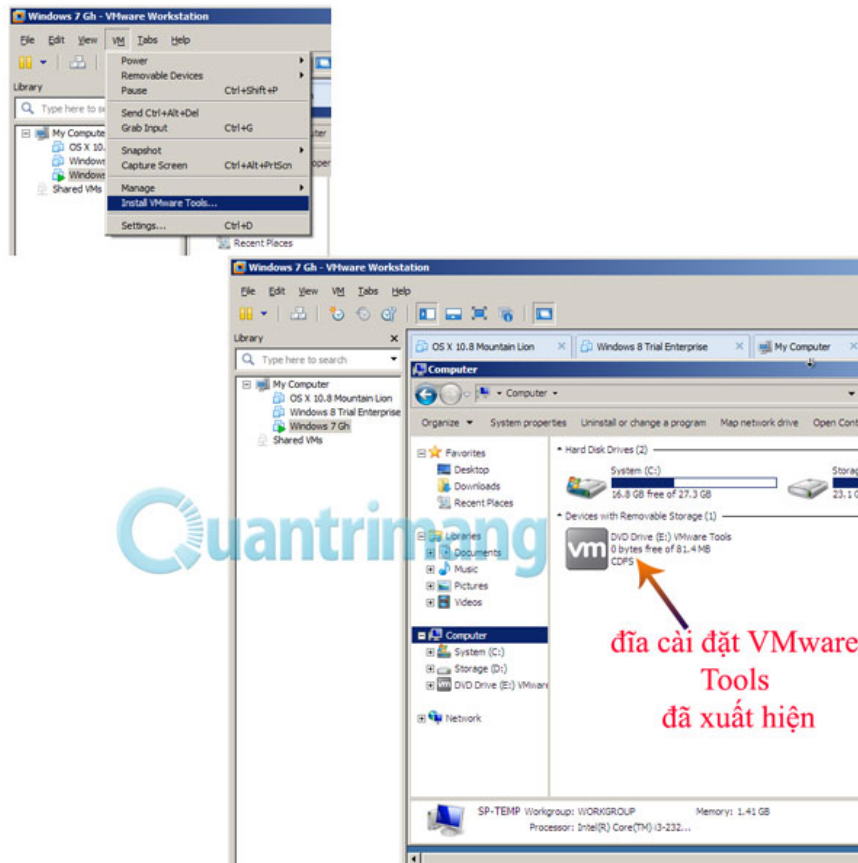
Today, TipsMake.com will guide you how to fix this problem. It's really simple, the reason is that **VMware Workstation** uses the file system `autoinst.flp` (located in the virtual machine installation directory) to create a floppy drive (virtual form).



To fix this problem, please change in the virtual floppy drive setup section, do not use the **autoinst.flp** file option anymore, but instead use the **Use physical drive , Auto detect mode**:



Click OK, then select **VM menu > Install VMware Tools** as usual, the VMware Tools installation disk will appear:



Link to download VMware Workstation latest version at download.com.vn

Good luck!

You finished reading the article "**Instructions for fixing errors do not install VMware Tools**" edited by the [TipsMake](#) team. We hope this article has provided you with many useful tech tips and tricks. You can search for similar articles on tips and guides. Thank you for reading and for following us regularly.