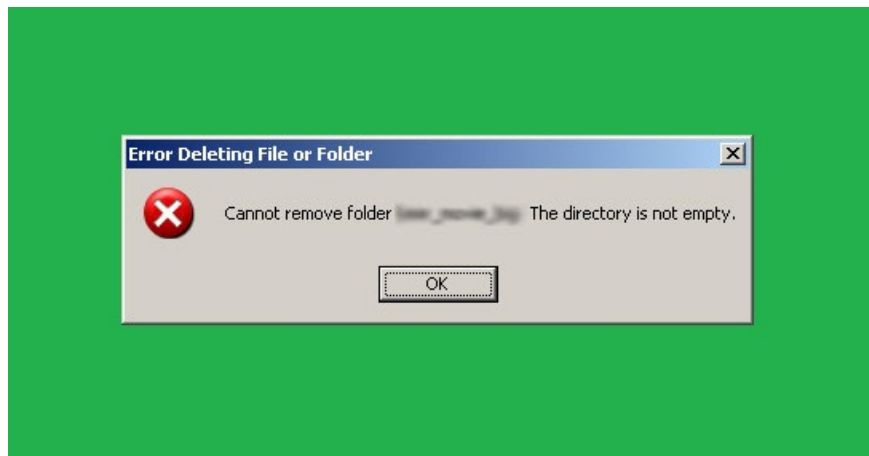


Instructions for fixing errors 'Cannot delete folder: The directory is not empty'

'Cannot delete / Access denied' hay 'Không thể xóa thư mục: thư mục không phải trống' is one of the most common errors in Windows XP, Windows Vista, Windows 7 and Windows 8. This error occurs while you try Delete a folder on the system.

'Cannot delete / Access denied' hay 'Không thể xóa thư mục: thư mục không phải trống' is one of the most common errors in Windows XP, Windows Vista, Windows 7 and Windows 8. This error occurs while you try Delete a folder on the system.

To fix the error '**Cannot delete / Access denied**' or '**Cannot delete folder: the directory is not empty**' you cannot use CHKDSK without installing and using any 3rd party software or programs .



To fix the error 'Cannot delete folder: The directory is not empty', follow the steps below:

Step 1:

Press the **Windows** + **R** key combination to open the Run command window, then enter **CHKDSK / F** in the Run command window and press **Enter**.

Note:

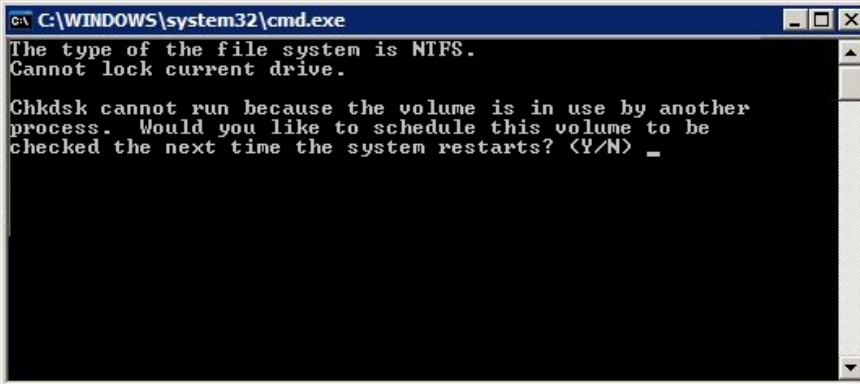
In the above command, replace F with the drive name containing the directory you want to delete.

For example, if the folder you want to delete is in drive E, you use the command: CHKDSK / E.

Step 2:

Now on the screen you will see the message:

"Chkdsk cannot run because the volume is in use by another process. B?n có th? x? lý các phân vùng này ?? ki? m tra th?i gian hành ??ng vì?c th? ti?p t?c (Y/N)".



```
C:\WINDOWS\system32\cmd.exe
The type of the file system is NTFS.
Cannot lock current drive.

Chkdsk cannot run because the volume is in use by another
process. Would you like to schedule this volume to be
checked the next time the system restarts? (Y/N) _
```

Step 3:

Your task is to enter **Y** and press **Enter** to agree.

Step 4:

After pressing Enter, the Run command window will automatically close.

Step 5:

Restart your computer to start the scanning process.

Step 6:

After the scan finishes, proceed to open the drive and try to delete the folder you want to delete earlier but report an error.

Step 7:

If the directory is deleted and does not display any error messages, it means that CHKDSK has fixed the error 'cannot remove directory not empty'.

Refer to some of the following articles:

1. Instructions for fixing Access Denied errors during file or folder access on Windows
1. Use CMD to create an 'undeleted' folder on Windows
1. 7 commands to manipulate the most basic files and folders everyone must know

Good luck!

You finished reading the article "**Instructions for fixing errors 'Cannot delete folder: The directory is not empty'**" edited by the [TipsMake](#) team. We hope this article has provided you with many useful tech tips and tricks. You can search for similar articles on tips and guides. Thank you for reading and for following us regularly.