

# Instructions for encrypting USB or memory cards with Bitlocker on Windows 10

To ensure the security of data on a USB or memory card, you can use BitLocker to encrypt your USB or memory card. In the article below, Network Administrator will guide you the steps to encrypt USB data or memory card with BitLocker.

USB and memory cards are fast and convenient data transfer tools. However, these are also tools to make your data leak out quickly. To ensure the security of data on a USB or memory card, you can use BitLocker to encrypt your USB or memory card.

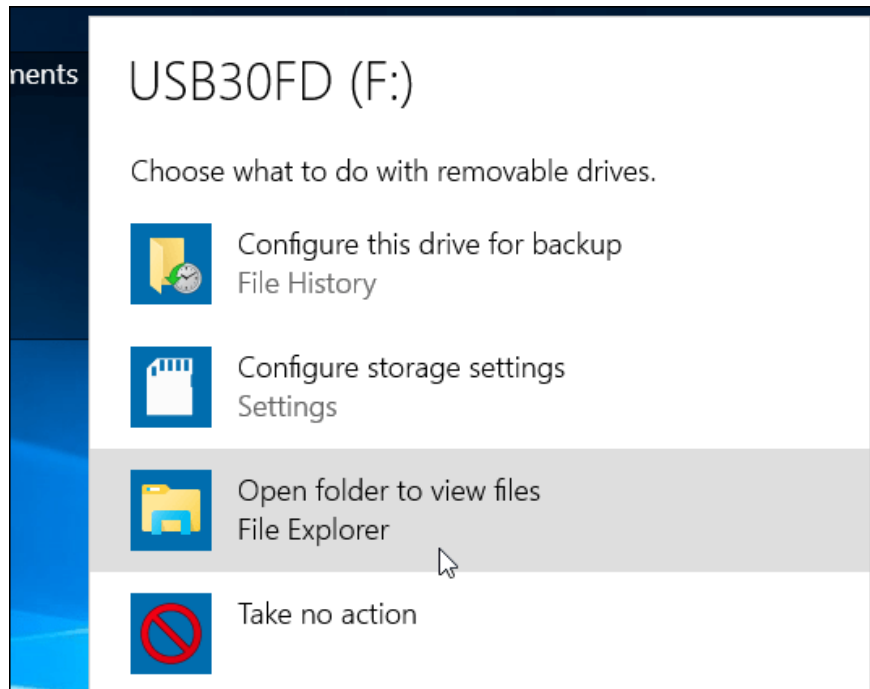
**Note :** The BitLocker Encryption Tool is only available on Windows 10 Pro versions, not available on Windows 10 Home version.

## Explore more:

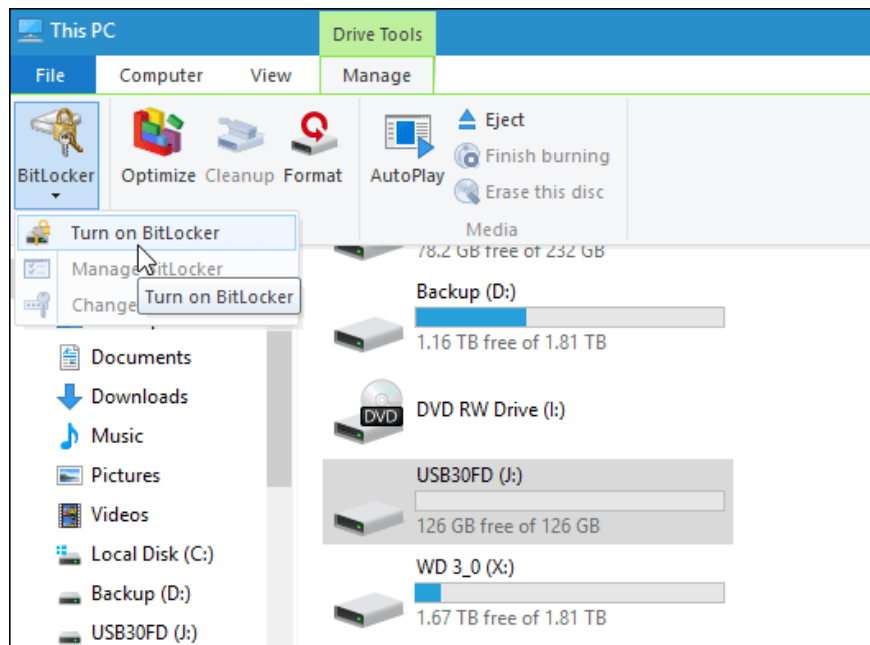
1. **Use BitLocker to encrypt external storage drives - Part 1**
2. **How to use Bitlocker to encrypt data on Windows 10 (Part 1)**
3. **Fix BitLocker setup error (Last part)**

## 1. Encrypt USB drive data on Windows 10

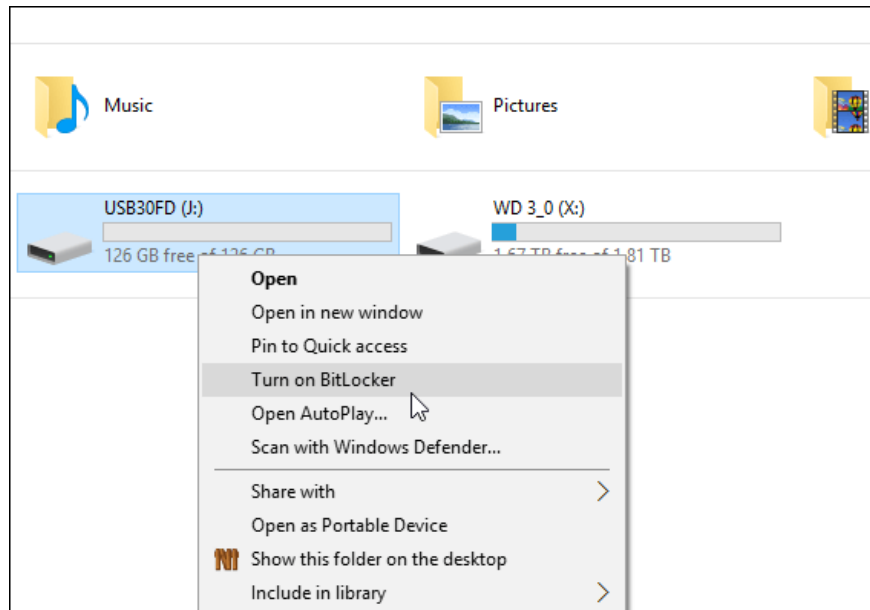
Plug in your USB drive (or memory card) and wait until Windows receives the USB. If AutoPlay appears on the screen, select Open folder to view files.



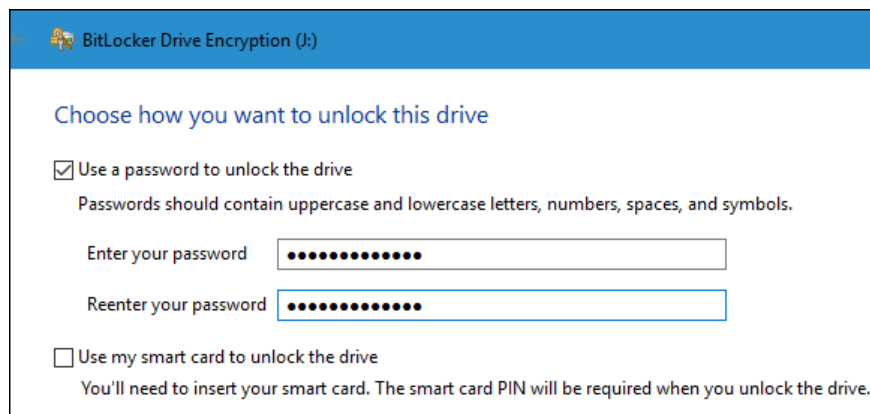
On the Ribbon toolbar, select the storage drive you want to encrypt. Then click on the **Manage** tab, select **BitLocker** and then select **Turn on BitLocker**.



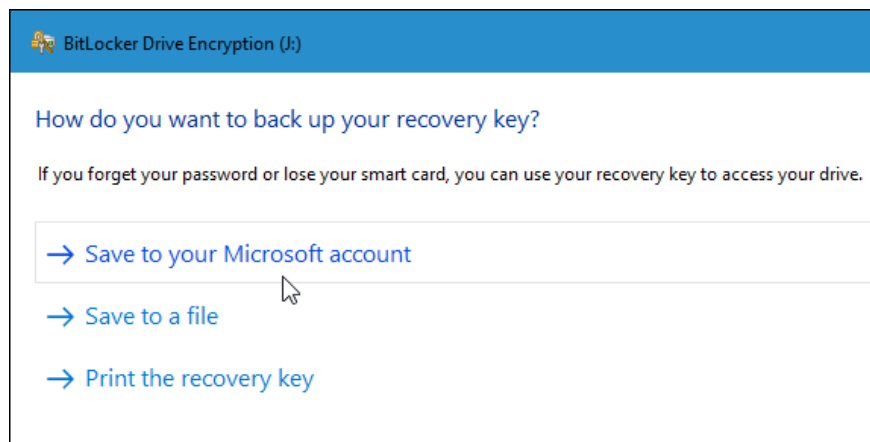
Alternatively, you can open Computer, then right-click the drive you want to encrypt, select **Turn on BitLocker**.



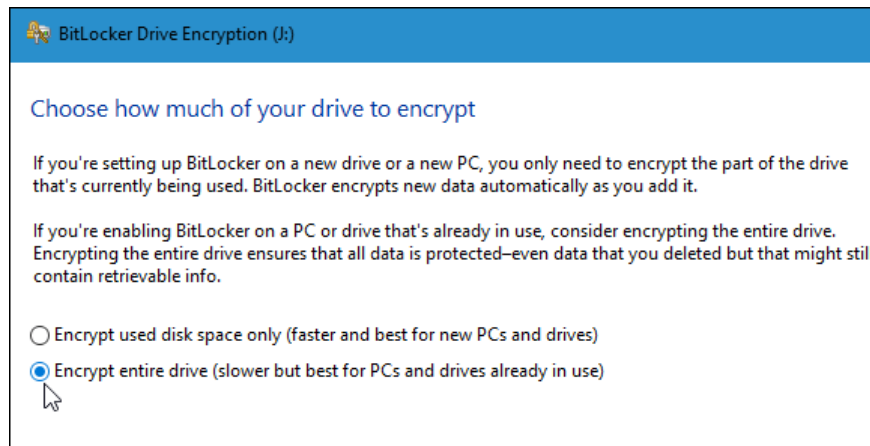
Check the box in the **Use a password to unlock the drive box** , then enter your password twice in the **Enter your password** and **Reenter your passwords** box .



At this time on the screen you will receive a backup key notification so that if you forget or lose your password, you can use this key to access the encrypted drive.



Next is to choose how to encrypt the storage drive. You will have 2 encryption options. The first option is **Used Disk Space Only** , the second option is **Entire drive** .

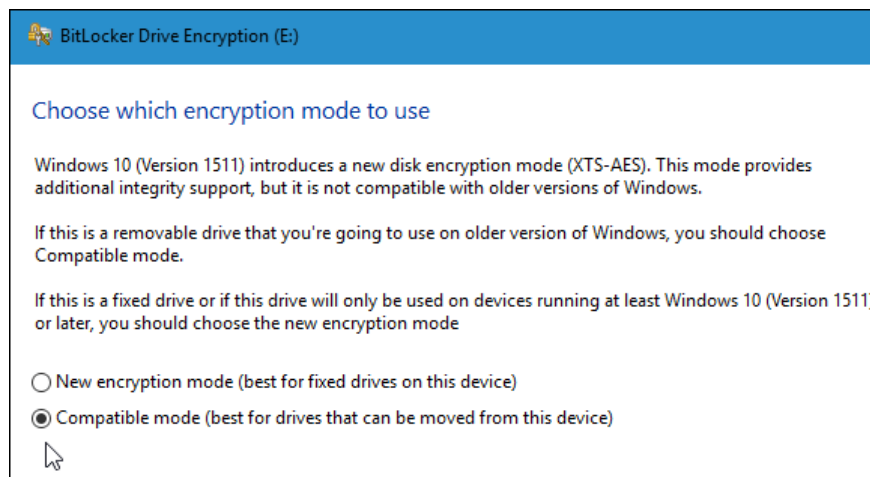


## 2. New encryption mode

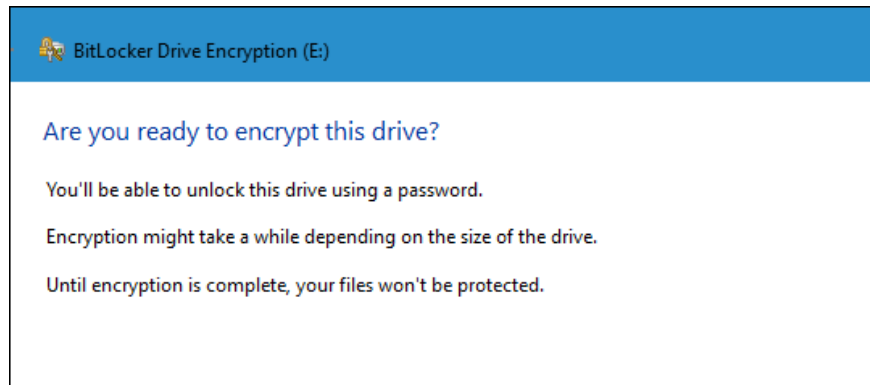
BitLocker on Windows 10 November Update has a more secure encryption mode called **XTS-AES 256 bit** . However, this encryption mode is not available on older Windows versions.

If your computer is running **Windows 10 November Update** , you can take advantage of this to encrypt any storage drive on your computer.

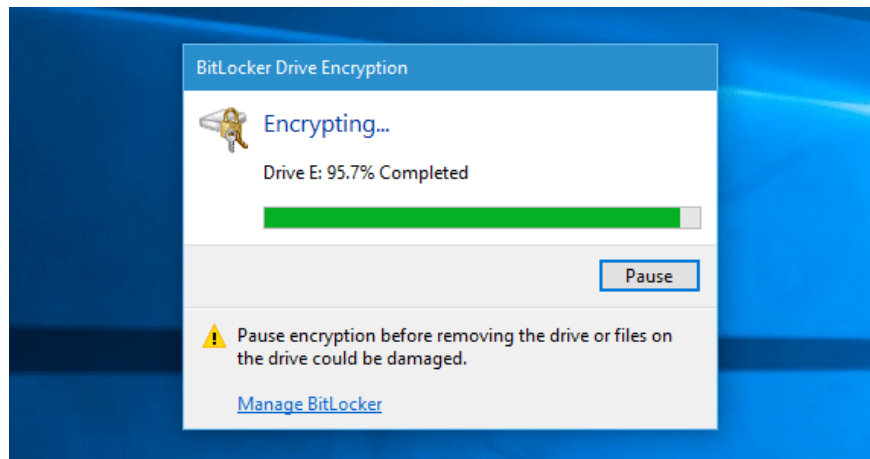
In case if you want to encrypt another storage drive such as USB or memory card, you can select **Compatible Mode** and use **128 bit AES** .



Start the coding process.

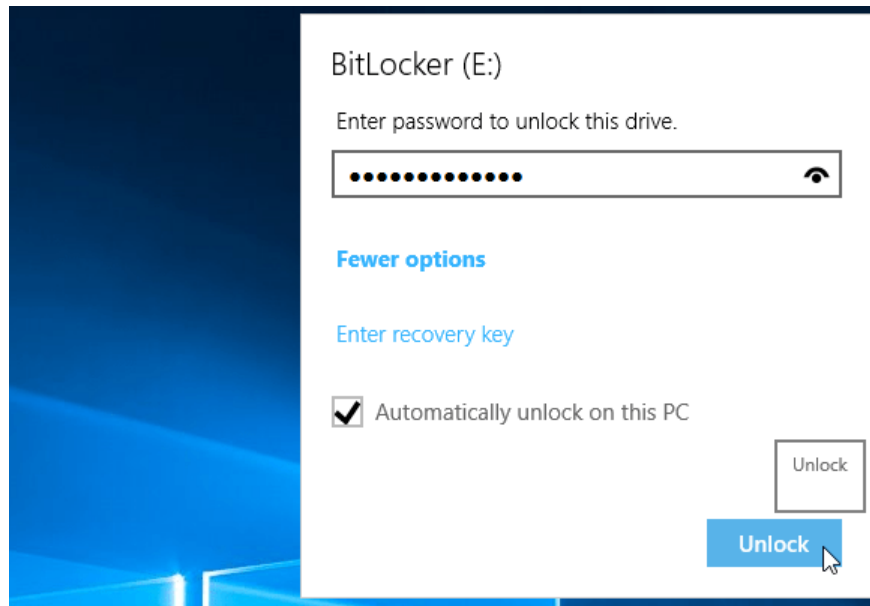


Encryption time depends on your system, amount of data, drive size .

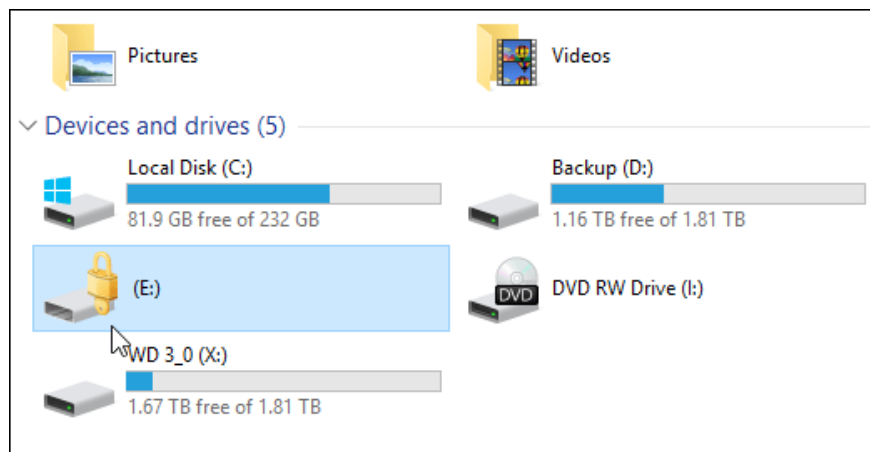


You can now plug in the encrypted drive, on the screen you will get a message to enter the password you created.

Also you can choose to add other options like **Automatically unlock on this PC** (automatically unlock the drive on your computer) or **Enter the Recovery key** ( enter Recovery key) in case you forget the password.



After your storage is encrypted, when you open the computer you will see a lock icon.



**Good luck!**

You finished reading the article "**Instructions for encrypting USB or memory cards with Bitlocker on Windows 10**" edited by the [TipsMake](#) team. We hope this article has provided you with many useful tech tips and tricks. You can search for similar articles on tips and guides. Thank you for reading and for following us regularly.